

Who made these named thimbles?

None of the following named thimbles - "**AUSSIE**" - *Coroza Silver* - *INVICTA* - fall into any of the above themes nor makers nor in previous topics, but they are worth recording - in the hope that someone, one day, will discover who made them.

If and when the makers' names come to light, I will leave them in this section, as they were all made in the first half of the 20th century and the information can be shared with all questioning thimble collectors.

see also: *Interesting lettering and symbols on thimbles* topic

"AUSSIE"

For those of you who collect Australian silver thimbles, this thimble has always been a puzzle as to the maker. Featured in my *Thimbles of Australia*, published in 1998, on pages 19-20, the maker still remains unknown 28 years after publication.

Whilst researching Aussie thimbles, I was able to access every issue of the Australian jewellery trade magazine *Commonwealth Jeweller and Watchmaker* from 1916 to 1970, and I never found mention of either the maker or a mention of the Aussie thimble. So even if it was imported, it was not being marketed here either.

"**AUSSIE**" is lettered in capitals between inverted commas, on the narrow band. On the verso, the following lettering appears in four separate lozenges - **S** + maker's mark in between, which could be an anvil on its side or a flag + **S L** in a separate lozenge each. Interpret these marks as Sterling Silver Steel Lined as the AUSSIE thimbles attract a magnet. There are no size marks, and all examples (eight known to date) seem to be the same size. These are rare thimbles and were never made in any quantity.

There is a scrolled-acanthus pattern above the name with a blank cartouche in a rectangular shape. The rest of the thimble is plainly indented.

There are three possible makers in Australia - but it may be none of these.

Aronson & Co of Melbourne registered their maker's mark of a flag, but thimbles known to have been made by Aronson, did not include this maker's mark.

W.F. Cole a manufacturing jeweller in Brisbane, had a maker's mark of an anvil, which was used between 1916 and 1945. No thimbles are ascribed to them.

A. Hiddlestone and Co of Melbourne used the anvil mark between 1914 and 1927. They were bangle specialists.

There is a possibility that the thimbles were not made in Australia - but commissioned for the Australian market. Its construction makes this a distinct possibility.





"AUSSIE" attracts a magnet



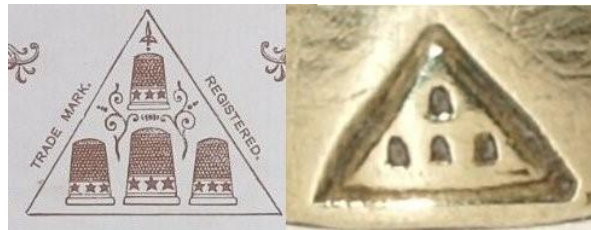
maker's mark

Coroza Silver

This mystery thimble has had everyone perplexed. Tho the thimble is lettered in cursive with *Coroza Silver*, this is not a sterling silver thimble - rather nickel silver.

Just when I thought the above lettering statement was true, a Coroza thimble has turned up with small upper-case lettering.

It is the mystery maker's symbol between the words Coroza and Silver that confuses collectors. It would be easy to mix up this mark with that of Charles tho the Iles registered maker's mark is an inverted triangle or shield with three touching thimbles inside. The Coroza thimble has a triangle with four dots or pellets inside. A recent composite box shows these as thimbles. It is a Registered Trademark.



The thimbles are sized on the rim.

The cursive lettering is also very similar to the lettering of Charles Iles *The...* thimbles. Why not then name this **The Coroza**?

Lastly, look at the little cardboard thimble box - it is very reminiscent of the Charles Iles named thimble boxes.

I believe that Iles is the only English manufacturer, who made millions of base metal thimbles, with a penchant for naming his thimble designs - so on balance he has to be the maker.



Coroza Silver Thimbles box



Coroza Silver wider band



Coroza with different lettering on a narrower band



Best Silver-Plated thimbles
showing the Registered Trademark with four thimbles

INVICTA SILVER

The last mystery British thimble is lettered on one side with **INVICTA** and on the other **SILVER**. The interesting aspect of this unknown maker's thimble is that there is a lining of steel on the inner rim, which attracts a magnet. I understand that not all Invicta thimbles attract a magnet - mine does. There is more than one pattern to these Invicta thimbles.

Compare the Invicta with that which is marked **A.C.E.** That thimble was patented by Alfred Constantine, and it is his Rheumatism or Arthritis thimble of 1909. Both the Invicta and A.C.E. have the distinctive steel-copper-lined rim on the inner surface of the thimble. Were they both to be used for rheumatic fingers?

There is a definite different shape to these two thimbles - the Invicta thimble has more of a 'waist'.

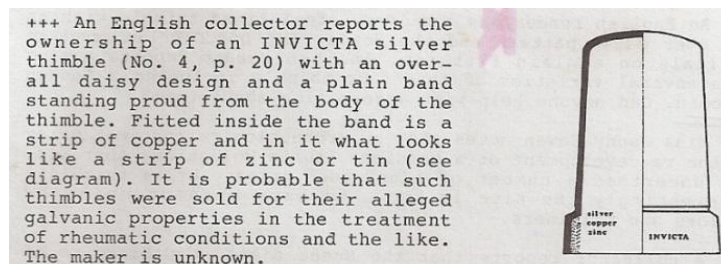
In my opinion, Constantine only registered his design, but I am sure he is not the maker - did Charles Iles make them? He was the premium English thimble manufacturer of base metal thimbles for 150 years and is known for his innovative designs.

The first time the Invicta thimble came to my attention was in Diane Pelham Burn's additions to her *Identifying steel-cored thimbles* in an update published in January 1994 by the Dorset Thimble Society. It is listed as ... "Plain (fine indentations). Marked 'SILVER' on band. Inner band of copper & steel".

The A.C.E. arthritis thimbles also featured in the Pelham Burn book, on p27. Di illustrated three different patterns.

In one of the 1950 issues of *Commonwealth Jeweller and Watchmaker* there is an advertisement for the Australian jewellery trade by Magnus Goldring of Sydney. They were manufacturers of "Britannic" and "Invicta" jewellery, gold & silver goods. The name "Invicta" has to be a coincidence - or not. Maybe they were importing Invicta thimbles from England as they had incorporated Edwin Harrop, jewellers from London, from 1915.

Early Australian army buttons are also lettered Invicta.



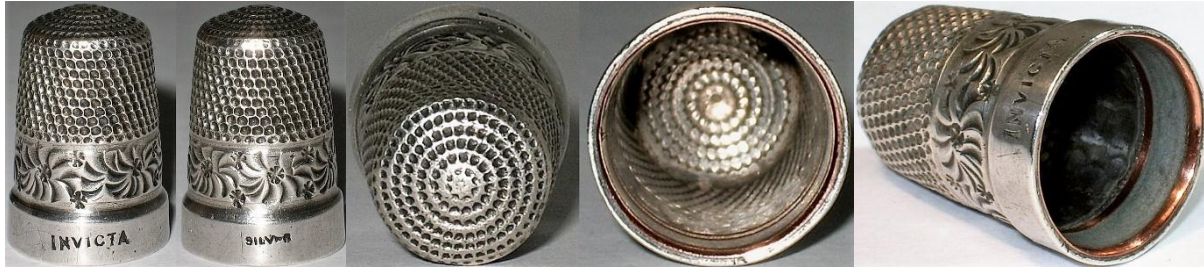
Holmes Notes and Queries no 5 -winter 1989
showing the shape & cross-section of Invicta thimbles



Invicta Silver thimbles



Silver on verso of Invicta



showing all aspects of one Invicta Silver thimble



Invicta inner rims
note copper showing at rim on right



this Invicta attracts a magnet



A.C.E rheumatism thimble
PAT 6253 in 1909
Alfred Constantine - patentee



A.C.E inner rim

Magnus Goldring Pty. Ltd.

(Incorporating EDWIN HARROP)

Kembla Building, Margaret Street
SYDNEY

Manufacturers of:
"BRITANNIC" & "INVICTA"
Jewellery, Gold and Silver Goods

are now displaying, for indent, samples of their

PRINCIPAL'S GOODS:

W. C. ALLDRIDGE LTD.	BIRMINGHAM
Gentlemen's Dressware; Imitation Onyx, M.O.P. Dress Sets, etc.	
DANIEL MANUFACTURING COMPANY	BIRMINGHAM
Ladies' Brushware in:	Gentlemen's Brush Sets in:
Petit Point	Silver
Silver and	Chrome and
Enamel	E.P.
E.P.	
Chrome	
HARMAN BROS. LTD.	BIRMINGHAM
"Aristocrat" } Cigarette	
"Harbo" } Cases	
in Silver, Chrome, E.P. and Goldtone. Map of Australia Cases in Chrome and Goldtone. "Aristocrat" Silver, Chrome and E.P. Cigarette Boxes.	
HATTON PRODUCTS LTD.	LONDON
9ct. and Silver Bezelet Charms.	
L. HEAPS LTD.	BIRMINGHAM
"Barford" Combination Cigarette Cases and Lighters.	
K. HESTENES	NORWAY
Silver and Enamelled Goods.	
A. HEWLETT LTD.	BIRMINGHAM
E.P. Cased and Bowed Goods. Loose E.P. Goods.	
MONTAL WATCH FITTINGS LTD.	CHELtenham
"Ballerina" Watch Bands, Cordelettes, Metal Watch Bands.	
JAMES SWANN & CO.	BIRMINGHAM
Silver Thimbles.	
TRAVIS WILSON & CO. LTD.	SHEFFIELD
Pewter Ware of all descriptions, specialising in Tankards and Spirit Flasks.	
JOHN TIMINGS & SON	BIRMINGHAM
Metal Watch Bands.	
UNIVERSAL WATCH FACTORY	GENEVA
High-grade Watches.	

ber 11, 1950.

THE COMMONWEALTH JEWELLER AND WATCHMAKER

Page 29

References

- Sue Gowan *Invicta thimbles* *TCI Bulletin* spring 2008
Susan Jean Gowan *Thimbles of Australia*. 1998
Di Pelham Burn *Identifying steel-cored thimbles*. 1995 + Supplement. 1997

Contributors

Jaylene Hopkins | Judith Hopkins | Ray Nimmo | Wolf-Dieter Scholz | Irene Schwall

This listing of Who made these named thimbles does not purport to be complete or accurate in all aspects.
Rather it invites comments and contributions to add to our knowledge. My thanks to the contributors.

EMAIL thimbleselect@bigpond.com TO SHARE YOUR KNOWLEDGE

© Sue Gowan
2012