

# Modern British sterling silver thimble makers

1955 – 2022

A - H

I think its time to showcase the skills of the modern British silversmith who has produced thimbles over the last sixty years. With a small output, by comparison with the silversmiths of yesteryear, these thimbles are largely handmade or machined in non-factory settings.

Many of the thimbles produced were made as commemoratives – for British royalty milestones – Easter or Christmas etc. None were produced in quantity, except for James Swann and Son (from Ray Coggle) (JS&S), the handpainted enamelled thimbles by Peter Swingler (PS) and Swann Thimbles (from Frank Jones) S(T) who are out of the scope of this topic – their output is simply too large to feature here. I have also ignored British enamelled thimbles unless the enamelling only forms a small embellishment.

Silversmiths are only featured here once the makers name has been established. I have unknown thimble makers identified only by initials in my archives.

They are included in the additional topic Modern British silver thimble makers still to be identified.

An invaluable source of these photos is from the original catalogues of The Thimble Guild, in Scotland (1983-2013) and Thimble Society of London (1981-2009). The information on new artists was at their fingertips at the time of their catalogues printing.

Apologies for the poor quality of many of the photos from the original catalogues.

The silversmiths are arranged in alphabetical order of their last name. Please share clearer photos to make this the worthwhile database it needs to be, to record these thimbles for posterity. I have included the place where the thimbles were created but not the assay office. Further biographical information is not as relevant to me – Id rather the thimbles did the talking. I do think its interesting to show photos where they are available. Further information on these silversmiths as thimblemakers is contained in my topic Makers Marks on British Thimbles.

From 1976, all assay marks must be re-registered every ten years. I wonder how many of the following silversmiths have needed to do this?

You wont find any Chester assay marks in this section as the Chester Assay Office closed in 1961.

As I create this topic I am awed by the beautiful and imaginative designs. Some show the great skill and delicate touch of the silversmith – but may not have been intended to be used for sewing. Interestingly, also I note that many have the hallmarks running vertically down the thimbles. Many have plain polished surfaces, with no indentations, which makes this possible. After a while, some of the thimble designs seem so similar but the makers marks are definitely different! As in earlier times, the makers marks may not actually be those of the maker!! My aim is to list the thimbles by the hallmarked makers name – once these are identified.

It would be a wonderful search to chase as many of these makers for your sterling silver collection?  
ENJOY the hunt!

I have already covered D I Dormon Brailsford and Kay Thetford Kendall, two modern British silversmiths, with their stand-alone topics, so they are not replicated here. Peter Swingler joined these topics in June 2017.

**I know who the following six thimble makers are** but have no photos of their thimbles. If you have photos, please share. Or please fill gaps where I dont have many photos – the more there are, the better!

CJB (Clifford John Barber) – KHG (Keith Hamilton-Gabb) - LL (Links of London)

PJM (Merriman Silver Ltd) - SAO (Sheffield Assay Office) - WW (Whitehill Silver & Plate)

There are now **137 (A-H=80 + I-Z=57)** modern silversmiths thimbles illustrated here - with over 1000 different images of their thimbles – astounding!! 41% of these thimbles were produced in the 1980s, the heyday of thimble-making.

The assay office is recorded when known. From 2000 all British sterling thimbles had to have 925 as part of their assay/hallmark. I have added this in where known, to aid where there may be no hallmark date.

I have not encountered any assay marks for British sterling silver thimbles with either a 2017 (there is now one example) nor a 2018 or 2019 mark.

Happiness is finding some new British thimbles with a 2020 and 2022 hallmark!

This reaffirms my feeling of sadness that thimble making using precious materials has ended in Britain!!

## William Adams Ltd (WA)

Birmingham



1982

Birmingham

## Charles George Alexander (CMA)

Isle of Man



1981

London for Isle of Man

vertical hallmarks

London import mark

rope-like rim

# Ammonite (ALtd)

## Glamorgan Wales

This Welsh company is based in Glamorgan, south Wales. They marketed their Easter and Christmas thimbles through The Heritage Collection based in Bristol, for distribution in the UK, USA, Australia and South Africa etc

There is a set of British national floral emblems created in 1978

The 1975-1978 thimbles were cast – the later issues (1980-1984) were die-formed and feel less substantial. Other maker marks encountered on the later thimbles are COG and B-L, but these maker marks are yet to be identified. Their output includes 9ct gold examples and gold-plated silver



1975/1977  
Birmingham  
Celtic Knots



1978  
Birmingham  
Daffodils  
Welsh national floral emblem



1978  
Birmingham  
Shamrocks  
Irish national floral emblem  
different from 1982 issue



1978  
Birmingham  
Thistles  
Scottish national floral emblem



1977  
Birmingham  
Welsh Spoons



1978  
Birmingham  
Welsh Spoons  
9ct gold



1978  
Birmingham

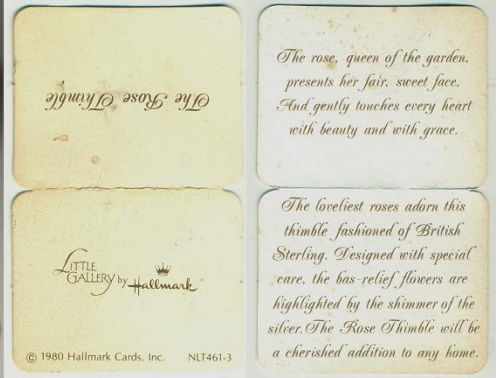




1978  
Birmingham  
Daffodils  
+ daffodil on apex



1978  
Birmingham  
Easter  
daffodils



1980  
Birmingham  
Stemmed Rose  
for Hallmark Cards – marketed by *Little Gallery*



1981  
Birmingham  
Daisies  
with shadow of green



1981  
Birmingham  
Christmas tree and holly



1981  
Birmingham  
Christmas bells



1981  
Birmingham  
commemorating the Marriage of Prince Charles  
with Prince of Wales feathers  
+ silver gilt



1981  
Birmingham  
commemorating the Marriage of Prince Charles  
with St Pauls Cathedral





1982  
Birmingham  
acanthus leaves



1982  
Birmingham  
Christmas



1982  
Birmingham  
Easter  
rabbits



1982  
Birmingham  
My Valentine



1982  
Birmingham  
Primroses  
silver-gilt



1982  
Birmingham  
Shamrocks  
different from 1978 issue



1984  
Birmingham  
Easter  
lilies



Birmingham  
Lilies



SILVER  
similar to 1978 Easter Daffodils  
no makers marks etc



SILVER  
similar to 1982 Easter bunnies  
no makers marks etc

## Aprilis (AS)

### Devon

Aprilis seem to use a second makers mark (A Ltd) – different mark from Ammonite Ltd



1979  
Birmingham  
vertically stippled surface

## Argyll Silver (AS)

Northfield Birmingham



1988  
turret or castle shape



2002  
Edinburgh  
925  
commemorating Queen Elizabeths Golden Jubilee  
using the 2002 jubilee hallmark on apex as part of the design  
these thimbles were made by Julius Wengert of Pzorzheim, Germany  
R: squat shape



# Vincent J Ashworth (VJA)

Leppington Malton North Yorkshire



1993  
London



Vincent Ashworth, Wolds Silver,  
Leppington, Malton,  
North Yorkshire

# Asprey (A&CoLtd)



1986  
London  
mouse on apex

# Kenneth Baguley (KB)

Baguley & Sons



1981  
London

## Simon J Beer (SJB)

Lewes Sussex



1989  
Sheffield  
Ellis family crest

## Anita Bell Page (ABP)



1979  
Sheffield  
inscribed H.S.



1980  
Sheffield  
applied stylised flowers



# Adrian Gerald Sallis Benney (AGB)

## Reading

1 April 1930-26 June 2008

opened his first workshop in Whitfield Place in London. He moved to Beenham House in 1963 in Reading, which was his home and workshop until 1999. He then moved to Wiltshire

He was awarded the Royal Warrant by HM the Queen as goldsmith and silversmith in 1974, followed by a Royal Warrant from HRH the Duke of Edinburgh and HM the Queen Mother in 1975 and in 1980

HRH the Prince of Wales

Professor of Silversmithing, Royal College of Art and Jewellery 1974-1983



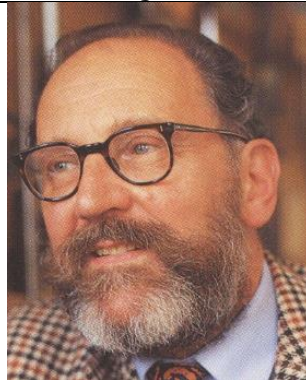
1977

London

commemorating Queen Elizabeths Silver Jubilee

stippled surface

similar design to **MN&WP**



# John H Berry (JHB)

Tenbury Wells Worcestershire

Fellow of the Institute of Professional Goldsmiths

similar design to **WHM - WM**

<http://www.jhberry.co.uk/about.htm>



1979

Sheffield



## Michael Bickerton (JMB)

Jewellery Quarter Birmingham

established for 50 years – in 2018

<https://www.bickertonjewellery.com/>



1981

Birmingham

commemorating the Royal Wedding of Lady Diana and Prince Charles  
pierced sides with C D 1981 and bells



## Bishtons Limited (BL<sup>D</sup>)

Birmingham



1978

Birmingham

gilt lining – made in Portugal  
Birmingham import mark

## Blue John Gem Box (BJGB)

Matlock Bath



1988

Sheffield

pink stone apex



# Michael Allen Bolton (MAB)

Cornwall

b.1938-d.2016



1975

London

sterling silver gold and opals



1984

London

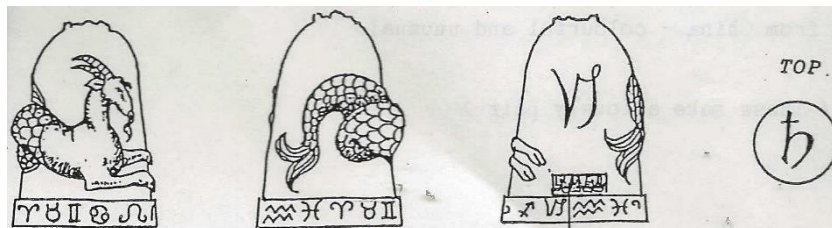
sterling silver and applied gold flower  
good weight



1989

London

Capricorn sign of the zodiac in relief  
designed by artist Joyce Hargreaves  
all signs of zodiac were created



# Boodle & Dunthorpe (B&D)

Liverpool



1978  
London

# Christopher S Bowen (CSB)



1978  
London  
crystalline finish and rim  
slightly flared rim



1983  
London  
stippled finish  
slightly flared rim



1997  
London  
commemorating Golden Wedding of  
Queen Elizabeth  
also available in silver-gilt and 9ct  
gold  
slightly flared rim  
commissioned by Thimble Society of  
London - with sketch  
limited edition of 800



1997  
London  
'Elizabeth and Philip 1947 - 1997'  
silver-gilt

# Aidan J Breen (AJB)

Dublin  
gold and silversmith



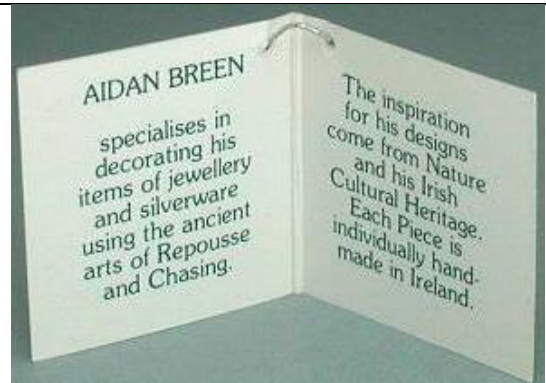
1985/1986

Dublin with Hibernia mark  
St Brendan's boat scene – lower different boat



1985

Dublin with Hibernia mark  
St Brigid's Cross





## W I Broadway (B&Co)



1981

Birmingham

with an inscription *18 years in S.L.C*



1983/1990  
Birmingham



1984/1989/1990/1995/1997/2000  
Birmingham  
similar design to **E&Co - nt - MK - DP**



1988

Birmingham

## Thomas Buchanan (TB)

**Cardenden Fife Scotland**



1979

Edinburgh

stone in apex  
marks on inner rim

## Clive Norman Bullivant (CNB)

Clive trained in 3D design specialising in metal and ceramics and ran a successful Silver workshop before becoming a teacher of Design and Technology up to A-level. Three times winner of Goldsmith Craft and Design Council awards for silversmithing design and seven international product design awards Clive now works with handcrafted pewter producing pieces inspired by nature and travel (Bridge Arts in Uckfield)  
he also creates handpainted enamelled sterling silver pill boxes



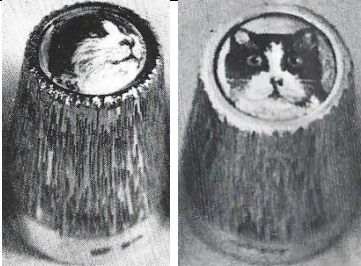
1982  
London

vertically stippled surface  
handpainted enamelled apex with cottage scene

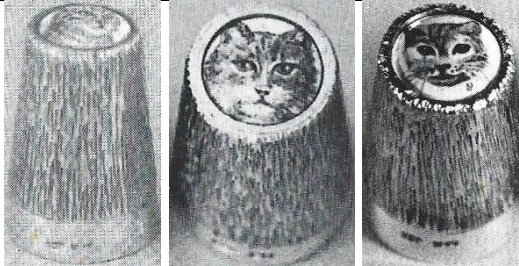


1982  
London

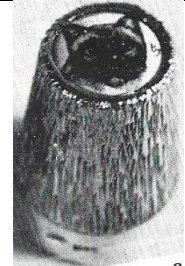
vertically stippled surface  
handpainted enamelled apex with leopard or cheetah



handpainted enamelled apex with  
black cat



handpainted enamelled apex with ginger  
cat



handpainted enamelled apex  
with Siamese

## Clive Edward Burr (CB)

London

Clive Burr studied under Gerald Benney at the Royal College of Art and set up a workshop in 1979 with fellow graduates Jane Short and Alistair McCallum. In 1983 they moved to Old Street and were joined by Rod Kelly and Sheila McDonald. By 1988 Clive had set up by himself in Berry Street where he stayed until he moved into the new Goldsmiths Centre in 2012.



1981

London

commemorating the Marriage of Prince Charles  
this thimble also exists with the makers mark **RL<sup>D</sup>**





# Timothy Joseph Burtwell (TB)

Tring Hertfordshire

This silversmith is using childrens story characters as a theme



1979/1989

London

hand-indentations



1983/1997

London

Piglet and Pooh  
both are sterling silver thimbles



1987/1992

London

Christopher Robin with Winnie the Pooh and umbrella in the rain



1991

London

mice amongst the oak leaves



925

Winnie the Pooh  
with balloon - honeypot



London

bear with building blocks



# Desmond A Byrne (DAB)

The Castle Yard The Parade Kilkenny Ireland

gold and silversmith

his shaped thimbles were commissioned by Fern Hill



1985

Dublin

turret or castle shape  
vertical hallmarks



Dublin

Kilkenny turret or castle shape



2001

Dublin with Hibernia mark  
two cats with furry surface



Dublin

925

applied cats

# Philip Campbell (PDAC)

## Mull Silver

Tobermory Isle of Mull Hebrides Scotland

Philip also created pewter thimbles

see also TCG



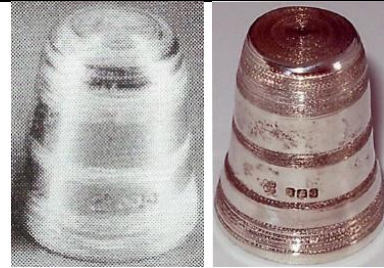
1980  
Edinburgh  
applied heart and crown



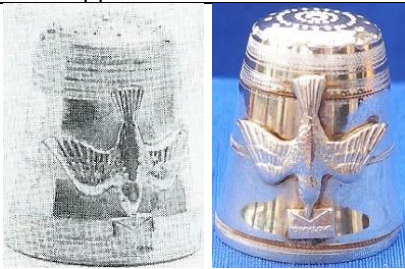
1982  
Edinburgh  
applied thistle on band



1983  
Edinburgh  
applied thistle on band



1983  
Edinburgh



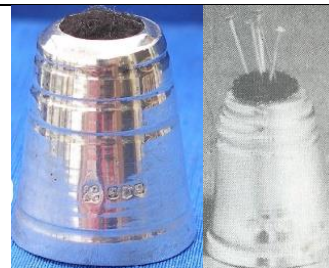
1983  
Edinburgh  
Dove of Peace To my Love message  
applied dove



1983  
Edinburgh  
plaited-type rim



1984  
Edinburgh  
frosted bands



1985  
Edinburgh  
pincushion apex  
limited edition of 100  
R in b&w: showing pins





1985  
Edinburgh  
 criss-cross bands



1986  
Edinburgh



1986  
Edinburgh  
 lightly pressed floral design



1986  
Edinburgh  
 commemorating the marriage of Prince Andrew  
 vertical hallmarks  
 hand indented apex  
 see also similar thimble for **NTS**



1987  
Edinburgh  
 Throned 1837 VR  
 commemorating 150 years Ascension of Victoria  
 vertical hallmarks



1987  
Edinburgh  
 whisky  
 vertical hallmarks t  
 histle on apex



1987  
Edinburgh  
 The Celtic Ram  
 vertical hallmarks





1987  
Edinburgh  
 Celtic design  
 vertical hallmarks along band on verso



1980s  
Edinburgh  
 applied Celtic pattern



1980s  
Edinburgh  
 plaited-type rim



1980s  
Edinburgh  
 applied Celtic lion rampant



Celtic Knot sterling silver design around rim on polished timber in squared shape limited to 250



floral

## Capri Jewellery Ltd (CJ)

London



1977  
London  
 identical design made by **HH** – with other details identical

# Robert Carr (RC)

Sheffield

recreations of Victorian patterns

this makers thimbles were for sale in David Jones Ltd in Australia



1999  
Sheffield



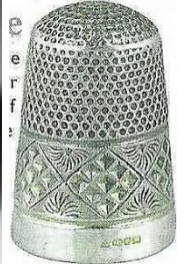
1999  
Sheffield



2000/2006  
Sheffield  
925



2002/2006  
Sheffield  
925



2006  
Sheffield  
925



2006  
Sheffield  
925

# William Henry Creswick (WHC)

Studio Deems

Branscombe Beer Devon

Artist in gold & silver



1960  
Chester  
9.375 gold  
dolls size - 9.00mm



# Susannah Mary (Molly) Challoner (SMC)

**Newcastle**

Molly Challoner (1901-1990) was a Newcastle born and based jeweller and silversmith working from her family home 15 Framlington Place, Newcastle. She exhibited jewellery and silver at both the 1926 and 1928 Arts and Crafts Society Exhibitions. Her work was exhibited in 1994 at a Brighton University exhibition Women Designing: Redefining Design in Britain Between the Wars. These same pieces are in the collection of the Goldsmith Hall  
She registered her SMC mark at the London assay office in 1923 and appears to have stopped working at the advent of the second world war, when she became a nurse and occupational therapist. After 1945 she contributed academically to the growing profession of occupational therapy



1955  
London

# Chamberlain Clarke Partnership (CCP)

These thimbles were probably made by James Swann & Son (JS&S) or Swann Thimbles S(T)



1984/1991  
Birmingham  
applied cupids



1991  
Birmingham  
ornate applied band  
rest smooth sides



1999  
London  
925

the hallmarked thimble is tiny - too small for practical use  
the sterling silver Cupid holder has the 2000 hallmark symbol on the base opposite the holder figurine



Sterling (no hallmarks)  
marks on leg of cupid



# Elizabeth Jane Chantler (EJC/JC)

**Brough Cumbria**

**AJ Designs**

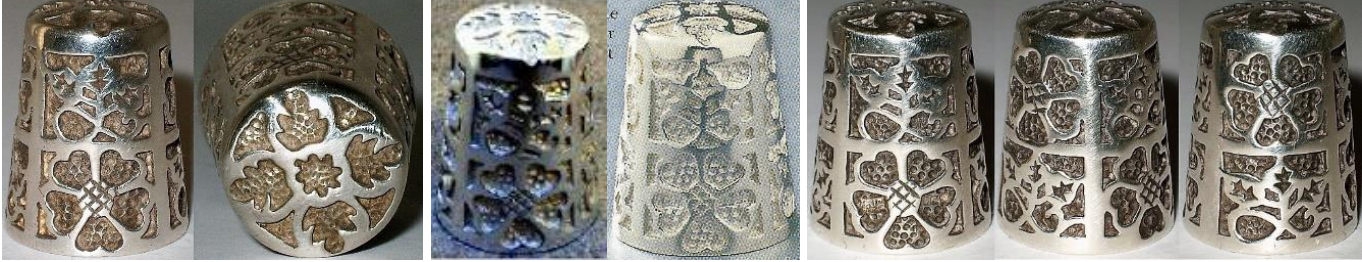

she began designing and making thimbles and jewellery in 1975, with the assistance of Ailsa McKenzie

Jane uses both of her marks, irrespective of the assay date

Janes thimbles were also available thru The Thimble Guild in Scotland 2001-2007

no thimbles were created after 2012?

where there are no hallmark dates, the thimbles are her stock items

 <p>1973/1976/2002  <u>Sheffield</u>            Barcelona            (1973 version has smoother finish)            10.2 grammes</p>	 <p>1980 - EJC  <u>Sheffield</u>            Moorish            11.9 grammes</p>
 <p>1980/1982/2001  <u>Sheffield</u>            Tudor Rose            body is divided into eight panels            rose and leaf clusters are repeated on apex            9.9-13.5 grammes</p>	
 <p>1981/2006 - EJC JC  <u>Sheffield</u>            Teddy Bears Picnic            tree on apex</p>	
 <p>1982/2001  <u>Sheffield</u>            Chamomile Daisy            11 grammes            available in 9ct gold</p>	 <p>1983/2002  <u>Sheffield</u>            Strawberry Fields            pattern repeated on apex            18 grammes            also available in 9ct gold</p>





1983/2002  
Sheffield  
 Swallows and Clouds  
 1983 limited to 100  
 also available in 9ct gold  
 16 grammes



1983/2004  
Sheffield  
 The Silver Clover  
 clover repeated on apex  
 1983 limited to 200



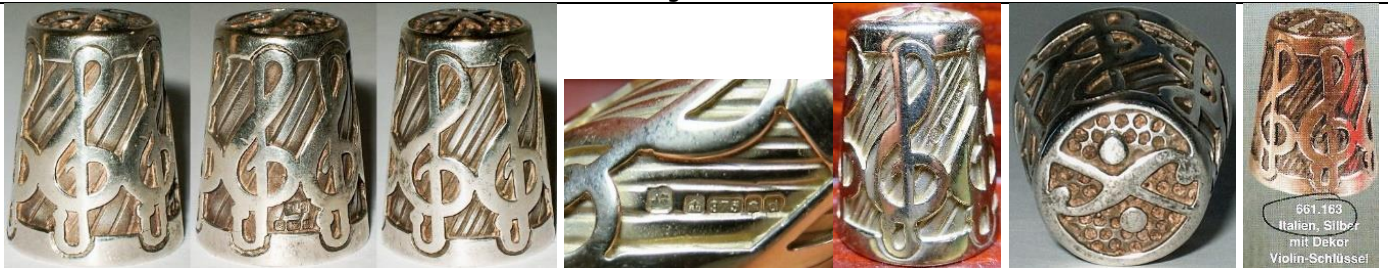
1984/2002  
Sheffield  
 Victorian Church Window  
 13.9 grammes



1987/1988 - EJC  
Sheffield  
 Avalon  
 one pattern repeated on apex  
 16.4 grammes  
 also available in 9ct gold



1989/1997 - EJC  
Sheffield  
 Swaledale Sheep  
 11.8 grammes



1994/1995/2003  
Sheffield  
 Treble Clef  
 13.2 grammes

C: .375 (9ct) gold (2003)

R: in May 1995, this copy was offered for sale by P J Walter as Italian .800 silver, marked for Novaro and makers mark + 22





1996  
Sheffield

commemorating Queen Elizabeth's 70<sup>th</sup> Birthday  
commissioned by Thimble Society of London  
limited 500 silver and 200 9ct gold  
22.4 grammes



1997  
Sheffield

commemorating Queen Elizabeth's Golden Wedding  
two bells design on apex  
19.9 grammes



2001  
Sheffield

The Apple Orchard  
showing three panels of the stages of apple trees  
apple on apex

R: in May 1995 this copy was offered for sale by P J Walter as Italian .800 silver, marked for Novaro and makers  
mark + 22  
11.6 grammes



2001  
Sheffield  
Shooting Star  
star on apex  
11 grammes



2001  
Sheffield  
The Dolphin  
dolphin repeated on apex  
R: 9ct gold (2004)  
15 grammes



2002  
Sheffield  
The Rabbit



2002  
Sheffield  
commemorating Queen Elizabeth's Golden Jubilee  
also available in silver gilt and 9ct gold  
commissioned by Thimble Society of London  
hallmarks within the 0  
17 grammes





2002/2003 - JC  
Sheffield  
 Goose Fair/Six Geese a-Laying



2002  
Sheffield  
 Fishing Fleet (in Whitby)  
 seagull on apex  
 also available in 9ct gold



2003  
Sheffield  
 Persian Rug  
 also available in 9ct gold



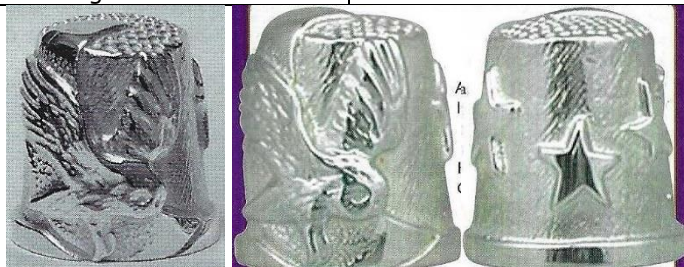
2003/2006  
Sheffield/Edinburgh  
 Thistle  
 four thistles all round  
 St Andrew's Cross on apex  
 also available in 9ct gold



2003  
Sheffield  
 The Cats  
 four cats with mouse on apex  
 also available in 9ct gold



2006  
Sheffield  
 Three Ships/Sailing ships  
 anchor on apex



2006  
Sheffield  
 Nocturne  
 owl in moonlight





2007  
Sheffield  
 Three March Hares  
 with crescent moon on apex  
 JC makers mark  
 925  
 limited to 75  
 14 grammes



2012 - JC  
Edinburgh  
 commemorating Queen Elizabeths Diamond Jubilee  
 limited to 75 - with Edinburgh jubilee mark  
 16.8 grammes



Bramble  
 bramble repeated on apex



A child scampers over the grass, her kite bobbing above her (promotional material)  
 12 grammes  
 made for a Thimble Club

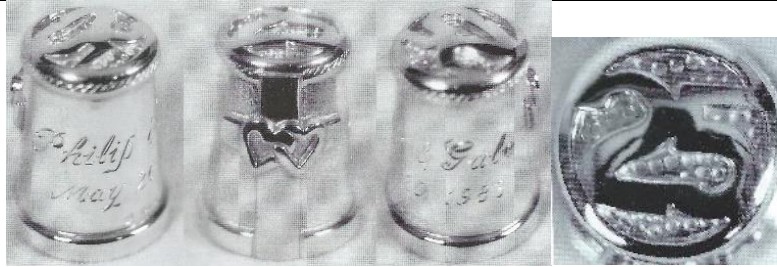


Millennium



A Frende Loveth atte all Tymes  
 A on apex  
 13 grammes  
 made for a Thimble Club





25<sup>th</sup> Wedding Anniversary  
private commission



Jane Chantler at her work bench

## Charterhouse Mint Limited (CM)

London

set of 12 reproductions of old thimbles by this company from original museum thimbles, the set is entitled Thimbles through the Ages: a connoisseurs collection with a modern assay mark, so there can be no confusion. The original thimbles had no assay marks, so the new marks had to be incorporated in these thimbles, cast from the originals.



1986  
London  
14<sup>th</sup> century



1986  
London  
15<sup>th</sup> century  
trifoliate holes in apex



1986  
London  
 16<sup>th</sup> century  
 tailors



1986  
London  
 16<sup>th</sup> century  
 touchstone of London



1986  
London  
 17<sup>th</sup> century  
 stars



1986  
London  
 17<sup>th</sup> century  
 Charles II and Katherine of Braganzas Wedding



1986  
London  
 17<sup>th</sup> century  
 Feare God and honour the king



1986  
London  
 17<sup>th</sup> century  
 includes makers mark of bird on pedestal



1986  
London  
 18<sup>th</sup> century  
 cwners mark EC



1986  
London  
 Birth of Prince of Wales 1841



1986  
London  
 Christening of Prince of Wales 1842





1986  
London  
 19<sup>th</sup> century

## J B Chatterley & Sons Ltd (JBC&S<sup>L</sup>D)

Birmingham



1977  
Birmingham  
 Just a Thimbleful

## Lorna Christie Jewellery (LCJ)

Isle of Mull Scotland  
 vertical hallmarks



1989  
Edinburgh  
 TSL in stepped cursive  
 commemorating AGM Sept 13<sup>th</sup> Cambridge  
 commissioned for Thimble Society of London



1992  
Edinburgh  
 raised wreath of decorative leaves  
 hand indented apex with star-formation

## Brian Clarke (BC)

**The Old Schoolhouse Ballinaclesh Rathdrum Co. Wicklow Ireland**

Brian Clarke is an Artist Metalsmith who has been running his own studio in Co. Wicklow, Ireland, since 1973. Having studied metal- and silversmithing techniques in Dublin, Paris and the UK, he embarked on a long career of commissions, private silversmithing work, sculptural pieces and research. His work is held in many collections, including in the National Museum of Ireland, in Dublin and the National Museum of Decorative Arts in Collins Barracks, Dublin.

<https://www.silversmithingworkshop.com/>



1978

Dublin

rope-like rim and stippled surface

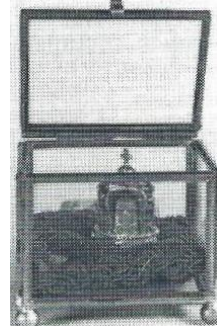


## Timothy P Clayton (TPC)

London



THIS SILVER THIMBLE AND CROWN COVER IS ONE OF A PRIVATE EDITION OF ONLY 200 DESIGNED BY JENNIFER M. YOUNG TO COMMEMORATE THE SILVER JUBILEE OF HER MAJESTY QUEEN ELIZABETH II LONG MAY SHE REIGN



1977

commemorating Queen Elizabeth's Silver Jubilee

1952 E<sup>II</sup>R 1977

with silver gilt and garnets crown which fits over thimble

limited to 200

thimble designer is Jennifer M Young

thimble in glass and gilt presentation case with red velvet cushion

R: b&w photo



# CME Jewellery (CME)

Leicester



1990s  
Birmingham  
925  
seated Fairy atop



Birmingham  
925  
Stork with Baby atop



Birmingham  
925  
ballerina atop  
import mark



925  
Teddy Bear atop holding flowers behind his back



with blue stones  
Birmingham import mark

# Albert Cohen & Charles Solomon (C&C)

Holborn Circus London  
trading as Cohen & Charles



1964/1966/1969  
Birmingham  
red stone apex  
size 7/9/5/6



1965/1966  
Birmingham  
size 4



1967  
Birmingham  
marks upside down  
similar design to **SJR**



1967  
Birmingham  
size 6



1973  
Birmingham  
black stone apex  
size 6



1974  
Birmingham  
agate set flat onto apex  
size 5



Birmingham  
stone set flat onto apex  
size 5



# Clive & Clarissa Cooke (C&CC)

## Wood Yard Gallery Ludlow

they use the lost cast waxing or spinning by lathe – motifs soldered on  
 in 2002 these thimbles retailed at between £52-65

where there are no hallmark dates, the thimbles are stock items – if yours has a hallmark date, please share. some of these thimbles were sold in Australia in 1988 by Jihl Berry of *Thimble Collections*, and Barbara Kelly of *The Thimble Collector*.



1980s (tho 1987 date also seen)  
 applied RSN for Royal School of Needlework and thread/needle  
 (seen incorrectly advertised as Royal School of Nursing)  
 this commission is where C&CCs thimble journey began  
 rope-like rim



1984/1986/1987

London

9ct gold Bees applied on beehive

R: some sold in Indian rosewood beehive container and a silver bee applied



1987

London

includes a sterling silver Beehive thimble holder with 9ct gold Bees  
 + VI import mark into The Netherlands + *De Vingerhoed* KS mark



1984  
London  
 beehive shape



1984/1988  
London  
 applied 9ct gold Butterfly on apex



1984  
London  
 applied 9ct gold Bee on apex and flowers



1984/1988  
London  
 Cat shape



1984/1986  
 King (chess piece)

also sold in an Indian rosewood container and silver portcullis  
 C: in May 1995 this copy was offered for sale by P J Walter as Italian .800 silver, marked for Novaro and makers mark + 22

I dont have any further details on the gold thimble (R)



1984/1987  
 Owl shape with dropped rim



1985  
 Penguin shape



1985  
 applied mouse in 9ct gold on apex





1986/1988

Queen (chess piece)

R: in May 1995 this copy was offered for sale by P J Walter (German mail order) as Italian .800 silver marked for Novaro and makers mark + 22 thimble box in shape of chess piece



1986

London

Fox head shape



1986/1988

London

Dog head shape



1988/1990

London

applied Ducks over vertical stippling 12 grammes



1988

London

large Bee applied on beehive shape Indian rosewood beehive container and a silver bee applied



1988/1989

London

Celtic Ribbon





1989  
London  
Celtic



1989  
London  
applied 9ct gold Butterflies and flowers



1990  
London  
applied Hedgehog atop



1991  
London  
strawberries  
strawberry repeated on apex



1993 or 1996  
applied mouse and 9ct gold cheese



2000  
London  
applied butterfly atop



applied 9ct gold Bee and flowers



bee and honeycomb



bear shape



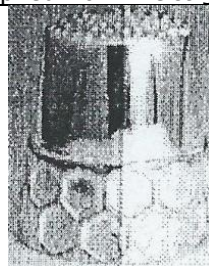
applied Bow in 9ct gold



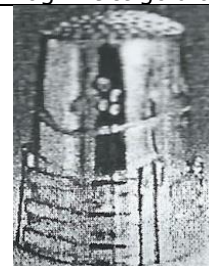
Applied frog in 9ct gold atop apex



hedgehog shape



honeycomb band



wall and gate





wildflowers

## Ronald Cordon (RC)



1981  
London  
hand-indentations

## Tim (Frogman) Cotterill

Cotterill grew up in the United Kingdom and has a passion for frogs. He moved to California.



c.1990  
no hallmarks Sterling © Frogman



## Crescent Silver (CS)



2012

Birmingham

applied Princes of Wales feathers Ich Dien  
Highgrove  
smooth surface

## Anthony Stephen Darwent (ASD)

**Castledon Derbyshire**

Blue John Jewellery



1986

Sheffield





# Deakin & Francis (D&F)

## Birmingham

these thimbles were made by **JS&S** with D&F makers mark – others have the **JS&S** makers mark – made for Thimble Society of London



1982

Birmingham

commemorating the Birth of Prince William  
+ 9ct gold  
commissioned by Thimble Society of London  
also made by **JS&S**



1984 (K)

Birmingham

commemorate the birth of Prince Henry  
15 September 1984  
gilded crown in 18ct gold including Thimble Society of  
London on apex  
also available in sterling silver  
commissioned by Thimble Society of London



1985 (L)

Birmingham

commemorating Queen Elizabeth the Queen Mother 85<sup>th</sup>  
birthday 4 August 1985  
with red white and blue enamelling  
commissioned by Thimble Society of London  
limited to 60



Christmas 1992 (S)

Birmingham



Deakin & Francis Birmingham

# Gregory John Dennis (GJD)

boxed set of 12 designed by Austrian artist Ludwig Redl. Redl's name appears below the number of each bas relief design. Limited to 1000 sets (tho according to Jean Shoup in 1988, only 100 sets were ever made), commemorating American Revolution and War of Independence, in Britannia silver (958/1000)

See also **LR**



1984

London

no. 1: The Boston Tea Party



1984

London

no. 2: Paul Revere's Midnight Ride



1984

London

no. 3: Fight on Concord Bridge



1984

London

no. 4: Battle of Lexington



1984

London

no. 5: Battle of Bunker Hill



1984

London

no. 6: Declaration of Independence



1984

London

no. 7: Molly Pitcher-Battle of Monmouth





1984/1992

London

no. 8: Washington Crossing the Delaware



1984

London

no. 9: Battle of Trenton



1984

London

no. 10: Battle of Germantown



1984

London

no. 11: Winter at Valley Forge



1984

London

no. 12: Surrender at Yorktown



boxed 12 of 1984 American Revolution set



1984/1992

London

The Spirit of 76

intended as a promotional thimble for the set



1992  
London  
 showing #6 & 7  
 the set was re-issued?



1998  
London  
 war scene

## Stuart Devlin (SD)

London



1980  
London  
 silver-gilt, enamelled floral band

## Dix Jewellery (DJ)

trading as Harrison Brothers & Howson Ltd – see also **HBH**

made in Pforzheim Germany by Julius Wengert

Wengert marks his thimbles in the apex with sizes S M or L

some have typical eight-point flower mark of modern German thimble makers



1990  
London  
925  
 London import mark  
 eight-point mark on apex



2000 (millennium mark)  
London  
925  
 eight-point mark on apex



London  
925  
 London import mark  
 bunnies in relief all round



London  
925  
 London import mark  
 foxes in relief all round



## Peter John Doherty (PJD)

Birmingham – the Worcestershire



1986

Birmingham

hallmarks are upside down

## K L Downes (KLD)

Birmingham



1981

Birmingham

advertising Carlsberg

## F Drury (Silversmiths) Ltd (FD)

Dore Sheffield



1982

Sheffield

# Thomas Kerr Ebbutt (TE)

Edinburgh

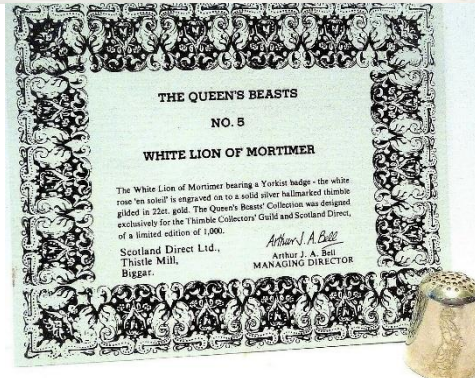
Ebbutt started work in 1896 and died in 1921. His company continued in business until 1977 when it was bought by Hamilton & Inches. H&I continued to use the TE mark until c2000



1986

Edinburgh

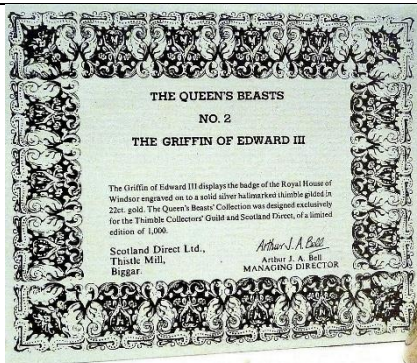
commemorating Commonwealth Games Edinburgh  
R: gilded sterling silver  
vertical hallmarks



1986/1988

Edinburgh

the Queens Beasts – White Lion of Mortimer  
(no 5 from set of 10)  
issued by Scotland Direct/The Thimble Collectors Guild  
limited to 1000



1986

Edinburgh

the Queens Beasts – The Griffin of Edward III  
(no 2 from set of 10)  
issued by Scotland Direct/The Thimble Collectors Guild  
limited to 1000



1989

Edinburgh

the Queens Beasts – The Lion of England  
(from set of 10)





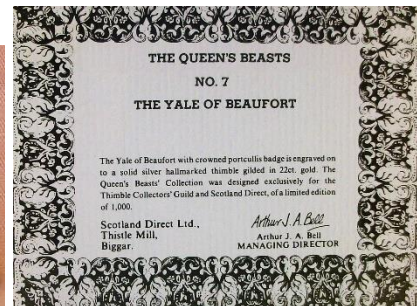
1986  
Edinburgh  
 The Queens Beasts - set of 10  
 vertical hallmarkst



1986  
 the Queens Beasts set of 10  
 vertical hallmarks  
 silver gilt



1986  
Edinburgh  
 two of the Queens Beasts  
 silver gilt



according to the accompanying certificate the set was made exclusively for Scotland Direct and limited to 1000 sets

full set: The White Greyhound of Richmond – The Griffin of Edward III – The Falcon of the Plantagenets – The Black Bull of Clarence – White Lion of Mortimer – The Unicorn of Scotland  
 The Yale of Beaufort – The Red Dragon of Wales – The White Horse of Hanover – The Lion of England



1990

Edinburgh

commemorating 90<sup>th</sup> Birthday of HM the Queen Mother

with official approval for the design and use of the Coat of Arms being sought from the Lord Lyon, King of Arms and Clarence House. The reverse bears a commemorative engraving, the sides are decorated with the Queen Mothers favourite flowers and roses.

the thimble is very large – almost twice the height of a normal thimble @ 1½ ins or 32mm; diameter 25mm  
weight 44.4 grammes (1.57ozs)  
edition of 475 thimbles

## Elkington & Co (E&Co)

Birmingham

probably made by **JS&S**



1961

Birmingham

similar design to **B&Co – nt – MK – DP**

## Exchange Findings Ltd (EFL<sup>TD</sup>)



1992

Sheffield

inscribed *Madeleine*

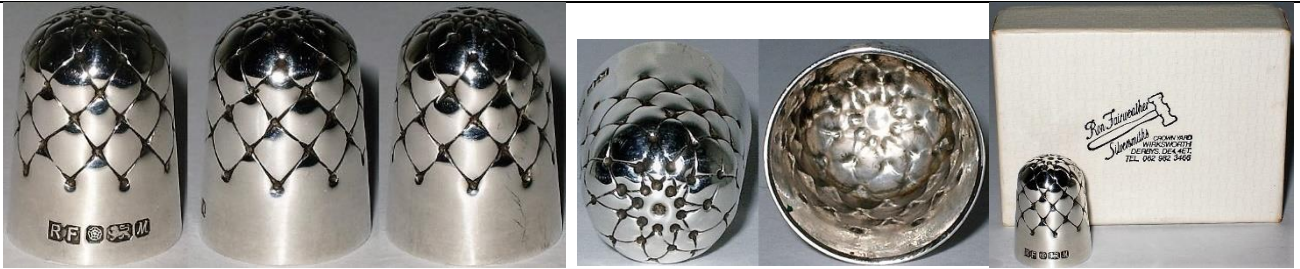
made in Germany – 8-petal flower mark on apex



# Roy Fairweather (RF)

**Ashbourne, Derbyshire**

Ron Fairweather is currently head designer and chief gold and silversmith for Avanti Jewellers. He served his apprenticeship at a London-based company, producing items for the high end retailers around Bond Street. He was based in Wirksworth Derbyshire when his 1980s sterling thimbles were created.



1986  
Sheffield



# F J Flavell Ltd (FGF)

**Stourbridge**



1984  
Birmingham  
Joy



2002  
Birmingham

# Shirley Frost (SF)

handcast



Gentle face



Cherub



Head



Child



Chariot

these designs were identified by these line drawings by Thimble Society of London in winter 1981. These may have that hallmark date? Some of these were also available in brass



1977

Birmingham

commemorating Queen Elizabeths Silver Jubilee



1978

Birmingham

face eyes closed



1979

Birmingham

face

many copies/fakes were made of this design  
finger-shaped



1979

Birmingham

face within swirls



1981

Birmingham

commemorating the Marriage of Prince Charles  
art nouveau swirls on verso  
with Welsh Dragon  
finger-shaped





1981  
Birmingham  
 commemorating the Royal Wedding of Prince Charles  
 with Prince of Wales feathers  
 art nouveau swirls on verso  
 finger-shaped

## Brian Leslie Fuller (BLF)

Clerkenwell London



1974  
London  
 finely stippled sides



1977  
London  
 stippled sides



1979  
London



1984  
London  
 dormouse

# Garrard & Co (G&C<sup>o</sup> L<sup>D</sup>)

London

The House of Garrard  
Regent Street and Albemarle Street London

These jewellers would have commissioned thimbles from various silversmiths



1983

London

enamelled leaves band with butterfly on apex  
probably made by Paul Morley



1989

Birmingham

Royal Opera House  
with Royal coat-of-arms of the United Kingdom  
engraved on apex



# Peter Gillmore (PG L<sup>D</sup>)



1977

London + London import mark + Jubilee mark

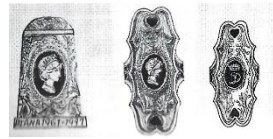
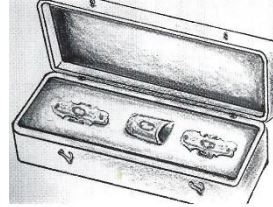
925

commemorating Silver Jubilee of QEII

identical design to the more well-known design by JS&S  
(marks cleanly struck so not a reproduction)



## Alicia Gordon (AG)



1998

Sheffield

commemorating the death of Princess Diana - Diana 1961-1997  
sterling silver and enamelling (850 copies) - 9ct gold - 18ct gold and enamelling (450 copies)  
commissioned by Thimble Society of London - with sketch of set with two fingerguards  
designer: Kuo-chi Lin  
small dainty thimble

## Ola M Gorie (OMG)

Orkney Scotland

she founded her jewellery company in 1960



1981

Edinburgh

applied Thistle with Celtic symbols  
on finely stippled sides  
flat apex



1981

Edinburgh

applied different Tudor Rose  
on finely stippled sides  
flat apex



1988/1989

Edinburgh

applied Tudor Rose  
domed apex



1989  
Edinburgh  
 applied thistles  
 domed apex



## Norman Grant (NG)

Lundin Links Fife Scotland

(1943-2017)

his company was known as Dust Jewellery



1976/1980/1981

Edinburgh  
 squirrels

hand-indented apex

lower: this example was acquired in 1976 from the Design Centre, Haymarket in London



1978/1979  
Edinburgh

bees amongst flowers with large honeycomb



1979  
Edinburgh  
 large bee





1981/1982  
Edinburgh  
 butterflies

1981 hallmarks are lettered across middle of thimble – 1982 they are on rim



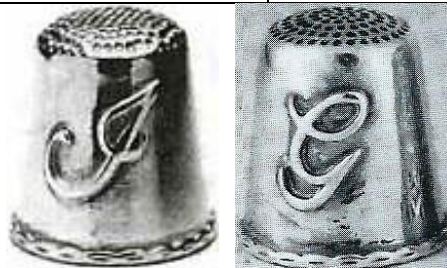
1981/1982/1983  
Edinburgh  
 dragonflies



1982  
Edinburgh  
 farm



1982  
Edinburgh  
 bees in flowers with small honeycomb  
 patterned rim



1982/1983/1986  
Edinburgh  
 applied initial I and G



1984

Edinburgh

commemorating 75<sup>th</sup> Birthday

30 April 1984 Prinses Juliana

blue enamelling - beaded rim signifies pearls she always wore and there are 75 crown over blue enamelling on apex

commissioned by Kay Sullivan - includes mark KS for her Dutch De Vingerhoed and the import mark of ZI into the Netherlands limited to 250



1985

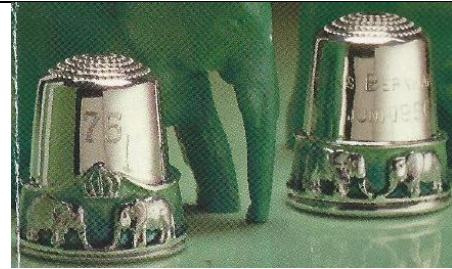
Edinburgh

commemorating 18<sup>th</sup> Birthday

Prins Willem Alexander 27 April 1985

gold-plated silver/blue enamelling

commissioned by Kay Sullivan - includes mark KS for her Dutch De Vingerhoed and the import mark of ZI into the Netherlands



1986

Edinburgh

commemorating 75<sup>th</sup> Birthday

Prins Bernhard 29 Juni 1986

green enamelled band of four elephants and crown  
commissioned by Kay Sullivan - includes mark KS for her Dutch De Vingerhoed and the import mark of ZI into the Netherlands limited to 250



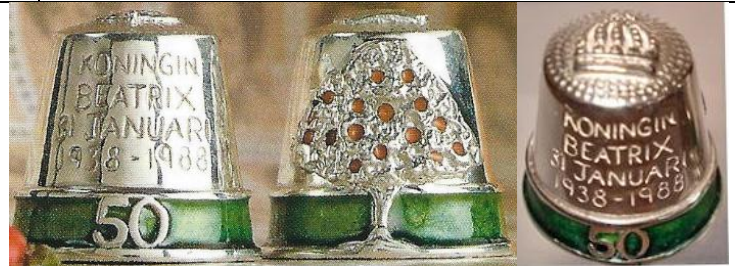
1987

Edinburgh

commemorating 50<sup>th</sup> Wedding Anniversary of Princess Juliana and Prince Bernhard

wide blue enamelling and gilding - ruby sapphire and zircon below crown

commissioned by Kay Sullivan - includes KS mark for her Dutch De Vingerhoed and the import mark of ZI into the Netherlands limited to 300



1988

Edinburgh

commemorating 50<sup>th</sup> Birthday of Queen Beatrix

applied orange tree, orange enamelled oranges and green enamelled band

applied crown on apex

Koningin Beatrix 1938-1988

commissioned by Kay Sullivan - includes KS mark for her Dutch De Vingerhoed and the import mark of ZI into the Netherlands limited to 250





## Martyn Guille (MG)



1999  
London  
Guernsey coat-of-arms  
similar design to **WHM**



2000  
London  
925  
slightly flared



# Harrison Brothers & Howson (HBH/HB<sup>S</sup>&H/HB&H)

## The Chase London SW4

made in Pforzheim Germany by Julius Wengert

Wengerts thimbles are uniquely marked with size in apex: S M L



apex has typical eight-point mark in shape of a flower of German thimble makers



see also **DJ**

 <p>2002 <u>Sheffield</u> (HBH) <u>925</u> commemorating Queen Elizabeth's Golden Jubilee 2002 Jubilee hallmark is part of design eight-point mark on apex</p>	 <p>2003 <u>Sheffield</u> (HBH) <u>925</u> eight-point mark on apex</p>
 <p>2012 <u>London</u> (HB<sup>S</sup>&amp;H) <u>925</u> commemorating Queen Elizabeth's Diamond Jubilee 2012 Jubilee hallmark is part of design eight-point mark on apex</p>	 <p>2022 (Jubilee mark) <u>London</u> (HB&amp;H) <u>925</u> commemorating Queen Elizabeth's Platinum Jubilee 2022 Jubilee hallmark is part of design eight-point mark on apex</p>
 <p><u>925</u> with <u>M</u> in apex which is a unique size marking of <u>Wengert</u> eight-point mark on apex</p>	



# Joseph Hayward & Son (JH&S)

Frederick Street Birmingham



1962  
Birmingham  
size 7



1963  
Birmingham  
size 3



1963  
Birmingham  
size 7



1978  
Birmingham  
size 3



1978  
Sheffield  
size 7

# R L Heaton (RLH)

Buxton



1981  
Sheffield



head-shape

## Henley Associated Jewellers (HAJ)



1997

Birmingham

commemorating Great Britain Seccession of Hong Kong to China  
 commissioned by Thimble Society of London - with sketch  
 limited to 500  
 designer: Kuo-chi Lin



2000

Birmingham

925

commemorating the Millennium  
 also available in 9ct gold  
 commissioned by Thimble Society of London  
 R: sapphire-coloured stones in centre of the zeros

## John Herbertson (JNH)

handmade from 1970s



1977  
London  
 castle



1978  
London  
 applied M  
 smooth sides



1979  
London  
 applied seabird  
 smooth sides



1979  
London  
 applied hedgehog  
 smooth sides





1993  
London  
stippled surface



1995  
London  
commemorating Dorset Thimble Society's 10<sup>th</sup> Anniversary 1985-1995  
stippled surface



applied daisies



## Hans Herman (HH)



1977  
London  
cast

identical design made by **CJ** - with other details identical

## Highland Line (HL)

**Achnasheen Scotland**  
Tony Michael Holland



1985  
Edinburgh  
smooth sides

# Michael D Hillier (MDH)

Dublin



1974  
Dublin  
stippled surface creating vertical panels



1983  
Dublin  
shamrocks  
vertical hallmarks

no photo

1988  
Dublin  
Millennium of Dublin



1988  
Dublin  
wide smooth band with symbols: question mark, a figure with crook and a lighthouse ...



1991  
Dublin  
handcrafted  
commemorating Dublin as City of Culture in Europe  
Happy and Sad masks representing theatre – an open book for Book of Kells and symbolising learning – an artists palette – a musical instrument – a Dublin door and a Celtic brooch

# David Hollander & Sons Ltd (DH&S)

**Birmingham**

based on Victorian thimble patterns



1978  
Sheffield  
size 4



1978  
Sheffield  
size 5



1978  
Birmingham  
size 5



# George Holmes (GH)

Birmingham



1991

Birmingham

The Thimble Guild (Nov 1991) attributes this thimble to David Parker – may only be the designer?

# Sheila Holness (SJH)

**Brent Knoll Somerset**

member of Somerset Guild of Craftsmen



1990

London

applied Flowers and Butterflies  
10.8 grammes



2011

London

applied Sprig of flowers and  
leaves  
includes Diamond Jubilee mark  
12.4 grammes



2011

London

applied flower with band of leaves  
includes Diamond Jubilee mark  
12.2 grammes

# Vera Mary Honeker (VMH)

Esher Surrey



1983

London

applied flower

# Charles Henry Hooper & Sybil Elsie Hooper (CHH)

**Birmingham**

trading as Hooper Jewellery



1985/1987/1990  
Birmingham

using five of Birmingham's Anchor  
assay mark around band



1985/1987/1990  
Sheffield

using five of Sheffield's Rose assay  
mark around band



1985/1987/1990  
London

using five of London's Leopard assay  
mark around band



1985/1987/1990  
Edinburgh

using five of Edinburgh's Castle assay mark around band



1986/1987  
Sheffield  
pierced band



1987/1990

British Hallmarks set  
each hallmarked with the corresponding Assay Office



# Mark Houghton/Ld (MH/MHLd)

Hatton Gardens London



1993  
Sheffield  
Dragonfly on stippled ground  
daisies pattern on apex  
made by **JS&S**



1998  
London  
applied Grapes  
London import mark



1999  
Sheffield  
925  
applied Swans on smooth sides  
see identical design made by **AN**



2002  
Sheffield  
925  
applied Flower on smooth sides



Sheffield  
925  
scene all round



Sheffield  
925  
scene all round  
size 9

# House of Lawrian (HOL)

Leigh-on-Sea Essex

Christopher Lawrence is a member of the Institute of Professional Goldsmiths



1977  
London

commemorating Queen Elizabeths Silver Jubilee  
applied gilt flowers and leaves on stippled ground  
R: numbered in apex – No 68  
similar design to **MN&WB - TT**



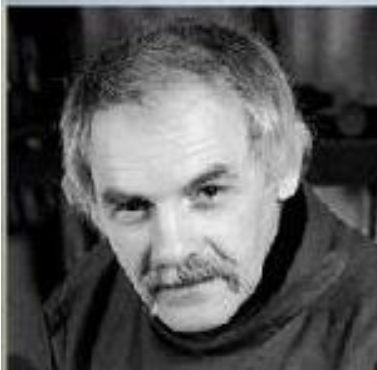
1978  
London



1978  
London



1979  
London  
gilt flames





# John Huddleston (JH)

Radley Oxfordshire

<https://www.jhsilver.co.uk>

silversmith and jeweller – he accepts commissions



2016

London

special commission – initial applied F and leaves  
hand indentations



2017

London

hand indentations on apex



London

applied flower on smooth sides  
unusually shaped indentations



## References

- Vanessa Frisbee *The wonderful world of Norman Grant*. <http://www.modernsilver.com/normangrant.htm>  
Jane Chantler Ltd. *Silversmith & thimble maker*. Welsh Thimblers issue 52, autumn 2003  
Diane Pelham Burn *Welcome to the newcomer*. At Your Fingertips. January 2009  
Sue Pickles *Thimbles by Andrew J Poole*. Welsh Thimblers issue 51, July 2003  
*Rayment & Hull silversmiths & goldsmiths*. Welsh Thimblers issue 30, April 1998  
The Thimble Guild *Catalogues*  
*Thimble maker: Jane Chantler, England*. TCI Bulletin summer 2008  
20<sup>th</sup> century thimble makers: Wood Yard Gallery. Welsh Thimblers, issue 45, January 2002  
<http://www.silvermakersmarks.co.uk>

## Contributors

Wendi Aguiar | Linda Bennett | Joanna Blackie-Sew Many Bits | Bleasdales | Yolanta Bogdziewicz | Beryl Crago  
Dorset Thimble Society | Joan Gale | Charlotte Goldberg | Karen Green (LAO) | Lydia Hamilton | Lin & Bill Heggs  
William Isbister | Denise Jenkins-Welsh Thimblers | Barbara Kelly | Caroline Meacham-Elegant Arts | Terry Meinke  
Ray Nimmo | Maurice O'Reilly | Sue Pickles | Diane Poesk | Wendy Ritchie | Wolf-Dieter Scholz | Marina Shcherbatyuk  
Norma Shattock | Jean Shoup-Thimbles Only | Jean Taylor | Rose Todd | Sue Wilson | Julie Winston

This listing of Modern British sterling silver thimble makers does not purport to be complete or accurate in all aspects.  
Rather it invites comment and contribution to add to our knowledge. My thanks to the contributors.

EMAIL [thimbleselect@bigpond.com](mailto:thimbleselect@bigpond.com) TO SHARE YOUR KNOWLEDGE

© **Sue Gowan**  
**March 2016**