

# Brass advertising thimbles

## INCLUDING OTHER BASE METAL THIMBLES

Most thimble collectors will know of aluminium advertising thimbles, which were produced in their millions, mainly in the 1920s and 1930s. There are thousands of different advertising brands available and it would be such a difficult topic for me to tackle - specially to find photos. I do have a database of different aluminium advertisements on thimbles and there are currently 1350 listed. Most of these thimbles originate in the USA, advertising American products and services.

Most aluminium advertising thimbles have a colour around the band, which emphasises the name of the product being advertised, as the raised lettering is left clear of colour. Some have coloured apexes - known as 'glass' tops - these are just coloured pieces of plastic which usually matches the colour on the band.

Brass advertising (including promotional or marketing) thimbles on the other hand are found far less frequently - now numbering **172** different adverts. They would have been produced earlier than the aluminium ones - I don't know when - my guess would be from the 1880s onwards to the 1920s, after which aluminium thimbles were so much cheaper to produce. They were made in far fewer numbers and tho more durable than aluminium, not as many have survived. There are very few brass US brands on thimbles, the preponderance being made for British and other European products.

When I began this research, I would have guessed that there were more British products advertised than European - the reverse is true - there are more French and German products!

Most brass advertising thimbles are made of just one colour of brass, with no coloured band - the exception is some of the French thimbles: they have muted colours on the bands.

Lettering also varies from country to country or the length of the advertising slogan - most are in UPPER case. Occasionally the lettering is in cursive. Unless specified, the lettering is raised and there is a solid raised rim.

I have tried to indicate in which country the thimbles were made = this is the most difficult information to find: even more so, the manufacturer. With excellent new reference texts being published in France (Michel Painsonneau) this should be remedied with time. Many of the British brass advertising thimbles were made by Charles Iles of Birmingham. Their factory closed in 1990. Most of their thimbles have a striated or milled patterning behind the lettering. Do you know any of the other makers of advertising brass thimbles? Were all the rimless ones made by the same manufacturer?

It is rare to find a size number on brass advertising thimbles. When there is a size number, the thimble was made later than the non-sized examples ie 1900 onwards.

Appropriately for thimble collectors, a large number of advertisements are for sewing threads, sewing machines, needles and fabric. I wonder how they were distributed? Were they free as giveaways or did one have to collect coupons? To me there is nothing lovelier for my collection than a patinaed brass advertising thimble.

Have you noticed how many of these century old brass thimbles reflect the norms of that era? A commentary: laundry products - farm machinery - cleaning products - manual work where new products were aimed at easing their lives: mainly of women (delightfully there is one advertising corsets)

I have included other base metal advertising thimbles that are neither brass nor aluminium, including steel and cupro-nickel advertising thimbles - they are rare.

It is difficult to know what the metal makeup of brass or brass-plated thimbles is. John von Hoelle defines brass as "a generic term for a group of alloys made of copper and zinc. The more zinc, the yellower the color; the more copper, the redder." Tombac is a type of brass and they are included in this topic - they are Austrian-made by Settmacher Bros of Vienna. This factory closed in 2005.

Occasionally there are brass advertising thimbles which form the top or lid of **sewing kits**. I have only included these when the thimble additionally has the advertisement lettered on the thimble.

See the example for 'Use Hudson's Soap'. I have consulted Sandy Woodward's authoritative work 'Pocket sewing kits' and there are very few examples where this occurs.

I have tried to follow the lettering of the advert ie upper or lower case. Apologies for ignoring umlauts, and French diphthongs and accents=I have only included them when I know that they appear on the thimble.

The translation from Arabic advertisements causes more problems tho and the translations are only approximate. Please help if you have any knowledge,

Always check in more than one place in the alphabetical listing below - for many of the French advertisements it is often difficult to know where the advertisement begins and ends e.g. "Lave tout Persil" or "Persil lave tout". If you have found the original advertisement - please share. I have now tried to use the first word after the \*, to help me with the order of the words. This is then the first word of the advertisement - sometimes the asterisk is just a large dot.

For **silver advertising** thimbles, see "Learn More About Silver Advertising Thimbles".

The thimbles are arranged alphabetically by the first letter of the advertising slogan, including "The ...", "Use ..." which are listed in the T or U sections. When there are initials at the start, I have placed them at the beginning of each section e.g. C.W.S. is placed at the beginning of the C section.

For other brass thimble topics see

Felix Morel thimbles (Bath) 1984-2002  
Jacqui and David Parker of Olivia (Birmingham) 1992-2001  
Woodsetton thimbles 1983-2015

---

### "ABASCO" DÉS PUBLICITÉ

topic = ?



red band

---

### ACEITE RICOLT

topic = OIL



**AUSTRIA**  
**Settmacher**

green lacquered band



**AUSTRIA**  
**Settmacher**

tombac silver-plated lacquered maroon band  
ribbed rope-like rim  
1920

(description Groiss)

## ACME

topic = MERCHANT

(USA supermarket or store, founded in Philadelphia in 1891)



## ACMR<sup>s</sup>

topic = ?



worn dark green band

## ADLER-Nähmaschinen

topic = SEWING MACHINE FROM GERMANY



GERMANY

vertically ribbed rim



GERMANY

vertically ribbed rim



## ALDERMAN SEWING SILK

topic = SEWING THREAD



vestiges of red band  
ribbed rope-like rim





---

## ALFA-LAVAL / ALFA LAVAL

topic = FARM MACHINERY



### GERMANY

has hyphen  
with stars patterning  
ribbed rope-like rim



no hyphen  
no rolled rim

---

## Amsterdam Couture

topic = CLOTHING



bronze-coated brass



---

## "ANCEL" CRÈME

topic = DESSERT



### FRANCE

Usines de Navarre

---

## ANCEL LEVURE D'ALSACE

topic = YEAST



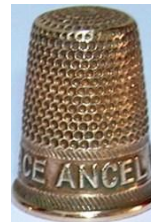
### FRANCE

Usines de Navarre

green band



### FRANCE



### FRANCE

Usines de Navarre



### FRANCE



narrow blue band





---

## ANKER NAAIMACHINE-MACHINES A COUDRE

topic = SEWING MACHINE FROM GERMANY



bilingual text in Dutch and French  
ribbed rope-like rim



---

## ASBRO

topic = NEEDLECASE

(barrel-shaped wooden cases, made in Germany)



**ENGLAND**  
pronounced rim



---

## BACKIN Du D<sup>R</sup>. OETKER

topic = BAKING POWDER

(German multinational company, founded 1891)



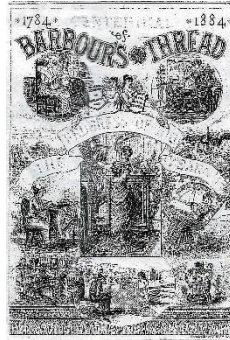
red band



**BARBOUR'S LINEN THREAD**  
 topic = SEWING THREAD  
 (thread made in Lisburn, Northern Ireland)



**ENGLAND**  
 Charles Iles



1784-1884 trade card



**BEMBERG**  
 topic = MANUFACTURER  
 (USA fabrics)



**FRANCE**  
 blue band  
 advert name repeated  
 vertically ribbed rim



**BIERE KARCHER**  
 topic = ALCOHOL (BEER)



vertically ribbed rim



**Bleu RECKITT / BLEU RECKITT**  
 topic = LAUNDRY PRODUCT



**FRANCE**



blue band  
 upper- & lower-case lettering



worn blue band  
 upper-case lettering





## BLUE CROSS TEA TE CRUZ AZUL

topic = TEA



incised lettering  
in English and Spanish  
with stars patterning



## BONUX

topic = LAUNDRY PRODUCT

(made by Proctor and Gamble for the French market from 1958)

thimble sometimes included in the washing powder box as a marketing tool



**FRANCE**  
**Usines de Navarre**  
silver-plated steel



## BRASSO POUR METAUX

topic = POLISH FOR METAL



**FRANCE**  
**Usines de Navarre**  
1910s



**FRANCE**  
R: squared apex giving straighter sides



blue band





no rim to this excavated damaged example



## BRINK'S CAFE

topic = CAFES

café in Los Angeles

Café owned by John Brink who died in 1915



black band



Main dining room

Brink's Cafe

Los Angeles

(painting by Dwight Goss c.1910)

## BRÜHL-HANDARBEITEN

topic = MERCHANT

(handicraft/needlecraft by Bruehl in Berlin, Germany)



sides seem quite straight-sided?  
vertically ribbed rim



red band  
vertically ribbed rim

---

## BRUN-LEA WINCEYETTE / BRUN LEA WINCEYETTE

topic = FABRIC



**ENGLAND**  
**Charles Iles**  
R: no hyphen  
L: with hyphen

BrunLea  
advertisement  
Burnley's 1951  
Festival of Britain  
commemorative  
booklet

---

## BULL DOG GUINNESS

topic = ALCOHOL (BEER)



vertically ribbed rim



---

## Bushells RICH Tea

topic = TEA

(made for the Australian market)



tho the band is red  
in ignorance, it has been added after manufacture

---

## C.M.S Cotons à broder

topic = SEWING THREAD



---

### C.M.S Handarbeitsgarne

topic = HANDICRAFT YARNS



blue band

---

### C.M.S Waage Seide

topic = SILK SEWING THREAD



---

### C.S. OSBORNE

topic = INDUSTRIAL TOOLS



USA  
Nickel-plated brass  
tailor's



USA  
Nickel-plated brass



available in 2022

---

### C.W.S. DESBEAU CORSETS

topic = CORSETS



worn dark blue or black band





---

## C.W.S. TEA

topic = TEA



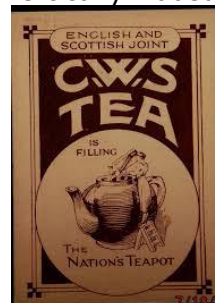
ribbed rope-like rim and four stars



R: vertically ribbed rim



1937 advertisement



---

## Câblé ASTRE D'OR D.A.é

topic = SEWING THREAD

(French thread made by D.A.é (Delespaul Ainé = Delespaul the Elder or Senior))



**FRANCE**

worn green band



**FRANCE**

pale green band

---

## Câblé AU PINGOUIN D.A.é

topic = SEWING THREAD

(French thread made by D.A.é (Delespaul Ainé = Delespaul the Elder or Senior))



**FRANCE**



---

## Câblé AU PINSON.C.F.

topic = SEWING THREAD



worn pinkish band



1939 advertising calendar

## CABLE 6 FILS A.U SANGLIER

topic = SEWING THREAD  
(French)



**FRANCE**  
worn green band



**FRANCE**  
**Usines de Navarre**  
strong bands of striations



**FRANCE**  
worn green band

## Câblé LOUIS d'OR

topic = SEWING THREAD  
(French)



**FRANCE**  
**Usines de Navarre**  
brown band  
bands of thicker striations



**FRANCE**  
**Usines de Navarre**  
blue band



**FRANCE**  
narrower band  
bands of narrower striations



**FRANCE**  
different band



**FRANCE**



**FRANCE**  
various blue bands



**FRANCE**  
bands of narrower striations



**FRANCE**  
narrow bright blue band  
bands of narrower striations



**FRANCE**  
worn blue band



**FRANCE**  
blue band





---

## FRANCE

blue band  
bands of narrower striations  
tapering shape



## FRANCE

worn blue band  
rare in tailor's thimble shape  
ribbed rope-like rim



spool container

---

## CALVERT

topic = ALCOHOL (WHISKEY)

see also: Switch to Calverts



### GERMANY U.S. Zone

1945-

this thimble would have fitted into  
a sewing kit with extra ridge

R: lettering inverted



thimble is stamped CALVERT and the inside lip of the sewing kit  
is stamped

"ARTGIFT" MADE IN GERMANY U.S. ZONE

The black lettering on the case reads:

SWITCH TO CALVERT · IT TASTES BETTER! BLENDED WHISKEY

86.8 PROOF ·

64% GRAIN NEUTRAL SPIRITS · CALVERT DISTILLERS CORP

NYC





---

## CARL & ANNE JANSEN INTERNTIONAL INSURANCE EXPRESS

topic = INSURANCE



THE NETHERLANDS

Anne is a Dutch thimble collector  
including a tailor's thimble version

---

## CARL RONNING'S KAFFEE

topic = COFFEE



GERMANY

Gabler

using one of their gadget Magneto thimbles  
lettered D.R.G.M. N° 332084  
black band



---

## CEYLINDO TEA

topic = TEA

see also: Sterling silver Advertising thimbles

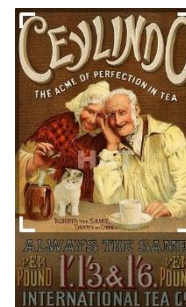


ENGLAND

Charles Iles

lettering over vertical striations

---



---

## CENTAUREA + BLUE

topic = ?



ENGLAND

Charles Iles

lettering over vertical striations  
patterned rim

---

## CHAUSSURES BALLY

topic = SHOES



FRANCE

no rim



---

## Chocolat DELESPAUL-HAVEZ

topic = CHOCOLATE

(manufacturers, established in France in 1848)



FRANCE

Usines de Navarre

grey band



FRANCE

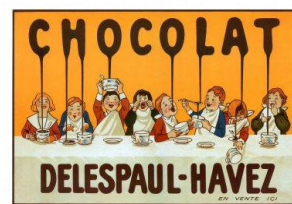
Usines de Navarre

worn red band



FRANCE

Usines de Navarre



---

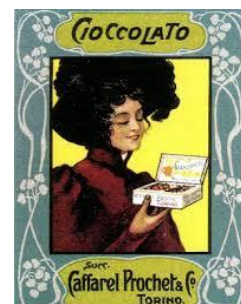
## CIOCCOLATO

CAFFAREL PROCHET-TORINO

topic = CHOCOLATE/COFFEE



worn green band





---

## CLARK & CO. LTD. PAISLEY.

topic = SEWING THREAD

see also: Use Clark's O.N.T Thread



**ENGLAND**  
**Charles Iles**

no rim

lettering inscribed on rim  
under Greek key band



Clark & Co thread ball

---

## CLARKS O.N.T COTTON

topic = SEWING THREAD

(O.N.T stands for "Our New Thread")



trade card



---

## COINTREAU / COINTREAU LIQUEUR / LIQUEUR COINTREAU

topic = ALCOHOL (LIQUEUR)

all these thimbles fit into the top of a sewing kit with the extra raised band



**FRANCE**  
worn red band  
1910s



the name is pressed in &  
forms the top of the sewing kit  
alongside



sewing kit advertising Cointreau  
Liqueur  
painted brass







## Colonial QUALITY SAMSTAG'S NY / NEW YORK

topic = BUTTONS & SAFETY PINS



**ENGLAND**

**Charles Iles**

L: no rim

lettering over striations

with unknown mark of a lion rampant in a shield

+ size mark

two versions = with and without rolled rim

tho made for a New York company, the rim is marked

Made in England or English



## CONROY'S PURE COFFEE

topic = COFFEE



**ENGLAND**

**Charles Iles**

lettering over vertical lettering



## Conservas LINO DA SILVA

topic = TINNED FISH

Francisco Maria Lino da Silva, Lda of 114e Rua General Gomes, Freire, Setúbal, Portugal were packers of canned fish in olive oil and in business from 1918-1965. Advert lettered in Portuguese.



ribbed rim



---

## CO-OP FOR DRAPERY

topic = MERCHANT

(British Co-operative Movement)



ENGLAND  
Charles Iles



---

## COTTON BOLL

topic = SEWING THREAD

(thimbles available online in 2018)



nickel  
size 9



## COUSEZ AVEC L'AIGUILLE SCIENTIFIQUES

topic = NEEDLES  
(made by Kirby Baird & Co Ltd of Redditch)

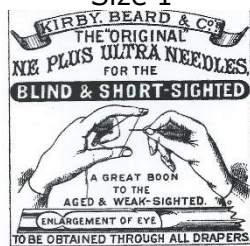


**FRANCE**

nickel

no rim

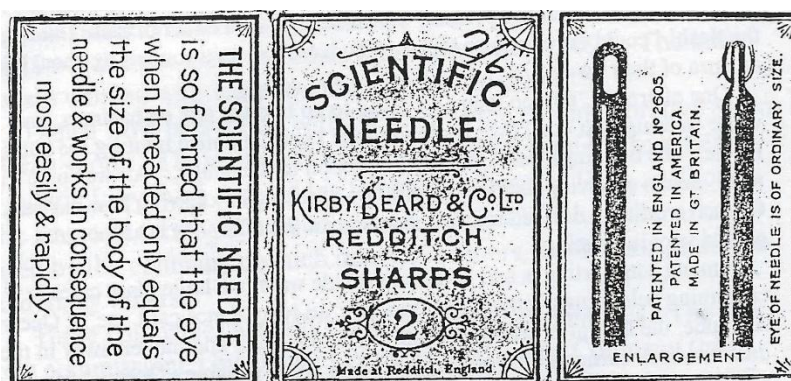
Size 1



MANUFACTURERS OF  
PINS, NEEDLES, HAIRPINS and FISH - HOOKS  
Of all Descriptions  
LONDON : 115, Newgate Street, E.C.  
PARIS : 75, Boulevard de Sebastopol.  
FACTORIES  
BIRMINGHAM : Bradford Street.  
REDDITCH : Ipsley Street.

SEND 3d STAMPS FOR SAMPLE PACKET.

*Sylvia's book of macrame lace. 1885*



## CRÈME ECLIPSE

topic = POLISH (FOR SHOES AND METAL)

(manufactured by the Société Générale des Cirages Français, founded in 1881 in Lyon)



**FRANCE**

**Usines de Navarre**



**FRANCE**

purple-blue band





---

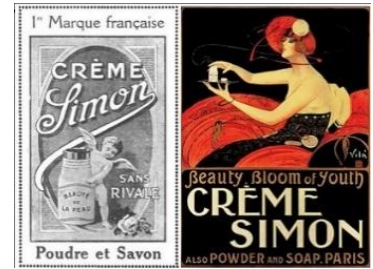
**CRÈME SIMON**  
topic = BEAUTY PRODUCT



**FRANCE**  
**Usines de Navarre**  
1920s



**FRANCE**  
**Usines de Navarre**  
1920s



2 advertisements from 1918 &  
1920s

---

**CURA DOLOR DE C.**  
**DISCOS E E**  
topic = ?



---

**DENTOL DENTRIFICE**  
**ANTISEPTIQUE**  
topic = TEETH PRODUCT



**FRANCE**  
**Usines de Navarre**



---

**DOS AMERICANOS CAFES**  
topic = COFFEE



red band  
no rim

---

**DRINK BROWN'S PURE ALES**  
topic = ALCOHOL (BEER)



**ENGLAND**  
**Charles Iles**  
lettering over vertical striations

---

## ECREMEUSE TITANIA

topic = DAIRY CREAM SEPARATOR

see also: Titanic Separator



**GERMANY**

1910s

ribbed rope-like rim



**GERMANY**

ribbed rope-like rim

---

## ECRÉMEUSÉS DIABOLO

topic = DAIRY CREAM SEPARATOR

(Swedish-made)



**FRANCE**

Usines de Navarre



**FRANCE**

turquoise-green band which matches the colour of this separator



---

## ECRÉMEUSES VÉLOX

topic = DAIRY CREAM SEPARATOR  
(Swedish-made)



**GERMANY**



---

## Enrilo

topic = CHOCOLATE  
(Spanish)



lettered over textured band  
patterned rim  
L: silver-plated?



---

## ENTREMETS ANCEL

topic = DESSERT



**FRANCE**  
red band



worn red band



---

## EQUITY SHOES

topic = SHOES

(the company went into liquidation in 2008)



**ENGLAND**  
**Charles Iles**

lettering over striations



Vanessa  
E Wide-Fitting



Black Leather/Star Swede 7 1/2



Stone Pearl Leather/  
Wet Patent/Suede 7 1/2



two overflowing  
a circle.  
eral pairs in my  
season when the  
ay come out yet



---

## FABRICATION FRANÇAISE

topic = MADE IN FRANCE



**FRANCE**  
**Usines de Navarre**

---

---

## FELDMAN JEWELRY STORE 206 Pike St Seattle

topic = JEWELLER  
(founded 1871)



**AUSTRIA**  
**Settmacher Bros**  
tombac (R)

---

## Fil à coudre CRESPEL

topic = SEWING THREAD  
(French)



**FRANCE**  
green band  
upper- & lower-case lettering



---

## Fil à la TETE de CHEVAL

topic = SEWING THREAD  
(French)

all these thimbles fit into the top of a sewing kit with the extra raised band



**FRANCE**  
green band  
upper & lower case lettering



**FRANCE**  
turquoise-blue band  
upper & lower case lettering  
1900s



**FRANCE**  
upper & lower case lettering



**FRANCE**  
turquoise-green band  
all upper-case lettering



**FRANCE**  
turquoise-green band  
Upper- & lower-case lettering

---



**FRANCE**

very rare to find the green wooden sewing kit  
with the matching brass advertising thimble  
+ a horse's head + J.T.P.F  
1920s-1930s



**FRANCE**

+ a horse's head + Thieret

### "FIL AU CHINOIS"

topic = SEWING THREAD  
(French)



**FRANCE**

mauve pink band



**FRANCE**



**FRANCE**

**steel**

lettering over stippling



**FRANCE**

**Usines de Navarre**





---

### Fil AU CONSCRIPT D.A.é

topic = SEWING THREAD

(French thread made by D.A.é (Delespaul Ainé = Delespaul the Elder or Senior))



**FRANCE**  
**Usines de Navarre**

---

### FIL DE LIN PELOTES D'OR

topic = SEWING THREAD

(French)



**FRANCE**  
**Usines de Navarre**



---

### GARIBALDI

topic = BISCUITS/COOKIES



**ENGLAND**  
**Charles Iles**

lettering over vertical striations  
patterned rim

could this thimble have been issued for the visit to  
Tyneside in England by Garibaldi in 1854?

---

### Gebruikt Buisman's G.S.

topic = COFFEE

("G.S" stands for Gebrande Suiker = burnt sugar, used as a syrup in coffee)



**FRANCE**  
**Usines de Navarre**  
lettered over horizontal striations



lettered over horizontal striations



---

**GEER CO. COAL**  
topic = HOME HEATING  
(since 1926)



**USA**  
lettered in blue on paper

---

**GERZON**  
topic = MERCHANT  
(Dutch department store)



worn patterned rim



postcard

---

**GLOSSO "Pour métaux"**  
topic = POLISH FOR METAL



**FRANCE**  
red band



orn red band

---

**"Glücksklee-Keks"**  
topic = BISCUITS/COOKIES  
(German milk producer, Bärenmarke Co)



ribbed rope-like rim

---

---

## **GOLD THIMBLE SCOTCH**

topic = ALCOHOL (WHISKY)

(Hiram Walker in the USA distributed this Scotch - 1950s)



engraved lettering  
5, 8 etc size



---

## ***Grants***

topic = MERCHANT



**USA**

lettering engraved in cursive on plain wide band

---

## ***Greenville Furniture Co. Greenville, S.C.***

topic = MERCHANT



**USA**



---

## Gregory Coal, Coke & Lime Co

topic = HOME HEATING  
(based in Marshalltown Ohio)



**GERMANY**  
lettering on black band



white metal  
lettering on green band  
different font



"Compliments of Gregory Coal ..."

---

## GRIFFITHS' TEAS

topic = TEA  
(one of the first distributors of Ceylon tea and coffee, founded in 1879)  
(Griffiths made in Sydney, Australia 1939-1945)



maroon band  
no rim



old tea warehouses have found a new life  
L: Flinders Street, Melbourne – R: Surry Hills,  
Sydney (built in 1915)

---

## Gritzner

topic = SEWING MACHINE FROM GERMANY



lettered over vertical striations  
silver-plated?



---

## **Gütermann's Nähseide/GÜTERMANN'S NÄHSEIDE/NAEHSEIDE**

topic = SEWING THREAD  
(German)

see also: Soie à coudre GUTERMANN



light blue band  
upper- & lower-case lettering  
with Gütermann's triangular trademark in blue  
vertically ribbed rim



upper case lettering with "Naehseide"  
vertically ribbed rim



black band  
upper case lettering  
with Gütermann's triangular trademark in black  
vertically ribbed rim



upper case lettering  
with Gütermann's triangular trademark  
vertically ribbed rim



ashtray

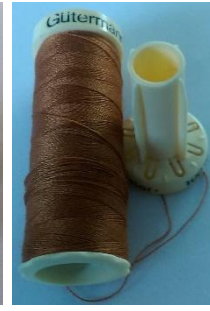


red velvet and metal advertising pincushion  
made in Germany with German lettering



product contains spools of blue thread





Did you know your Gutermann threads contain a needle case within the spool of thread?

## GÜTERMANN'S SEWING SILK

topic = SEWING THREAD  
(German)



**GERMANY**  
vertically ribbed rim



worn red band  
with Gütermann's triangular trademark in red  
vertically ribbed rim

## HAG

topic = ?



nickel silver  
size 2



straight-sided

## Heutzutage Quieta

topic = COFFEE MERCHANT  
(in Germany)

see also: Quieta als Kaffee / QUIETA in der tat delikat!



ribbed rope-like rim



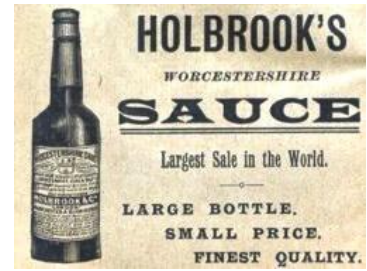
---

## HOLBROOK'S SAUCE

topic = SAUCE



**ENGLAND**  
**Charles Iles**



---

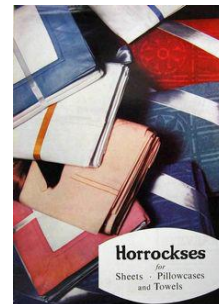
## HORROCKS'S for VALUE

topic = FABRIC



### GERMANY

lettered over cross-hatching  
this thimble was probably made by **Gabler**  
lettered Foreign in indentations  
highly patterned rim



---

## HORROCKS'S WAREHOUSE

topic = FABRIC



**ENGLAND**  
**Charles Iles**

lettering over vertical striations

---

## HOTEL FRITZ REUTER STAVENHAGEN

topic = HOTEL  
(in Germany)



**AUSTRIA**  
**Settmacher**

nickel silver with blue "glass" apex & Greek Key band

---

## HOVIS BREAD

topic = BREAD

see also: Sterling silver advertising thimbles



**ENGLAND**  
**Charles Iles**

lettering over vertical striations



**ENGLAND**  
**Charles Iles**

lettering over vertical striations  
silver-plated



---

## HUSQVARNA MOD. I. MOLANDER

topic = SEWING MACHINE FROM SWEDEN



nickel silver?

---

## I NEEDA

topic = BISCUITS/COOKIES



**GERMANY**

this thimble was probably made by **Gabler**  
as there is the 8-petalled maker's mark on the  
apex

Patent is lettered on the verso

---



---

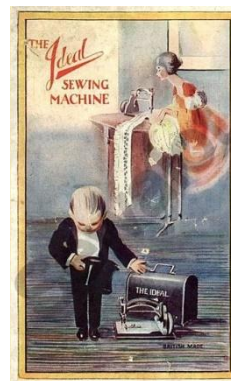
## IDEAL

topic = SEWING MACHINE  
(made in their London factory)



### GERMANY

nickel plated brass  
with a band of stars to L & R of lettering  
differing indentation sizes  
L: ribbed rim – others are smooth  
size 3



---

## "J. Schutz & Sohn - Biberach"

topic = CLEANING PRODUCT  
(still operating in Germany)



### GERMANY

vertically ribbed rim  
with stars patterning

---

## J. VAN GORP – Carnot 170 – "DÜRKOPP" naaimachienen

topic = SEWING MACHINE MERCHANT  
(Germany)



ribbed rope-like rim



---

## Jabon "EL OSO"

topic = SOAP



ribbed rope-like rim



---

## JABONES BARANGÉ

topic = LAUNDRY PRODUCT  
(Barcelona Spain)



ribbed rope-like rim



this may be a sewing kit?



---

## JOE OPTICIAN JEWELRY St Joseph, Mo.

topic = JEWELLER



USA

---

## K.B Cº BIRMINGHAM

topic = NEEDLES  
(made by Kirby Baird & Co Ltd of Redditch)



ENGLAND  
Charles Iles  
plated brass?  
beaded rim

---

## KABIS AEHGAR (?)

topic = ?



ribbed rope-like rim

---

## KOCH'S EIERMACCARONI

topic = PASTA



ribbed rope-like rim



---

## KÜHNE-SENF

topic = MUSTARD

(Carl Kühne, Germany – founded in 1722)



ribbed rope-like rim  
size 9?



product

---

## LACIS

topic = LACE

(online store - still in operation in California in 2018)



heavy brass – tailor's  
pronounced plain rim  
available online in many sizes



---

## LAMPE MAZDA

topic = LIGHTING

(the extra thicker rims indicate these thimbles formed the top of a sewing kit)



lighter metal?



yellow lettering on red band  
aluminium but rare enough to include here for  
completeness



---

## LESSIVE-PHÉNIX

topic = LAUNDRY PRODUCT



**FRANCE**  
**Usines de Navarre**  
1930s



green band



blue band



lighter blue band



---

## LESSIVE SURPRISE

topic = LAUNDRY PRODUCT



**FRANCE**  
**Usines de Navarre**  
pale blue band

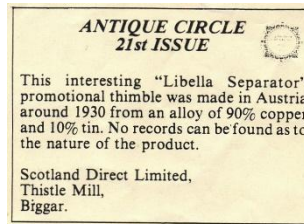
---

## LIBELLA Separator

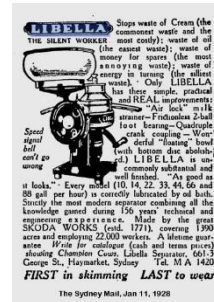
topic = DAIRY CREAM SEPARATOR



**FRANCE**  
**Usines de Navarre**  
vertically ribbed rim  
1930s



certificate of authenticity



1928 advertisement from  
*The Sydney Mail*

## LINDEBOOM Frou Frou

topic = BISCUITS/COOKIES



**HOLLAND**  
no rim



vertically ribbed rim



## LION NOIR ARGENTIL

topic = POLISH



**FRANCE**  
red band



## LION NOIR-CROMA

topic = LAUNDRY PRODUCT  
(dyes)



**FRANCE**  
red band  
size '2' lettered on apex





---

## LIPPMAN'S JEWELERS Since 1889 311 Market St. Harrisburg, Pa.

topic = JEWELLER



USA

---

## LISTER SEPARATOR

topic = DAIRY CREAM SEPARATOR

(introduced in 1903 by R.A. Lister & Co Ltd, Dudley in Gloucestershire)



ENGLAND  
Charles Iles  
no rim



Lister Cream Separator, introduced 1903  
R.A. Lister & Co. Ltd., Dudley, Glou.

---

## Ludwig Beck München

topic = DEPARTMENT STORE FROM MUNICH GERMANY

(still in business 2021)



highly patterned rim



---

## LUTONA COCOA

topic = COCOA



GERMANY

this thimble was probably made by **Gabler**  
lettered Foreign  
vertically ribbed rim



FRANCE

blue bands – R: narrower  
vertically ribbed rim





---

## M RECORT MERCERIA

topic = MERCHANT  
(drapers)



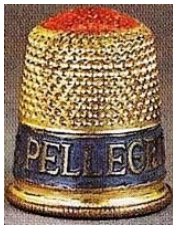
**SPAIN**

ribbed rope-like rim

---

## MAGNESIA S. PELLEGRINO

topic = MEDICINAL  
(laxative & antacid)



**AUSTRIA**

**Settmacher Bros**

tombac - blue band  
red "glass" apex  
1930-1935  
vertically ribbed rim



**AUSTRIA**

**Settmacher Bros**

tombac silver-plated  
lacquered purple band  
1920  
(description Groiss)  
vertically ribbed rim

**AUSTRIA**

**Settmacher Bros**

ribbed rope-like rim



**AUSTRIA**

**Settmacher Bros**

tombac silver-plated lacquered  
red band  
1920  
(description Groiss)  
vertically ribbed rim



**AUSTRIA**

**Settmacher Bros**

tombac silver-plated lacquered  
maroon band  
maroon "glass" apex  
1920  
(description Groiss)  
vertically ribbed rim



**AUSTRIA**

**Settmacher Bros**



red narrower band  
ribbed rope-like rim



green band  
ribbed rope-like rim

---



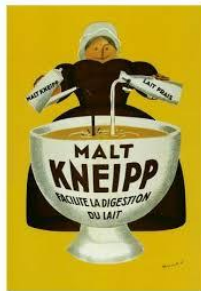
---

## Malt Kneipp

topic = COFFEE MERCHANT  
(in Paris)



white lacquered band  
forms part of a grey metal sewing kit



---

## MAZAWATTEE TEA

topic = TEA



ENGLAND

Charles Iles

lettering over very wide band of vertical striations  
ornate rim



---

## MEET ME IN THE ARCADE AT D.M. BROWN'S

topic = MERCHANT  
(store in Dundee, Scotland - 1900s)  
("Where the Luncheon and Tea Rooms are")



**ENGLAND**  
**Charles Iles**

no rim  
includes a monogram or logo for DMB on the verso

---

## MERCHANT & MILLS

topic = MERCHANT  
(drapers & haberdashers in Rye, East Sussex)  
these drapers were founded in 2010 by Carolyn Denham & Roderick Field



tailor's open ended thimble  
interestingly lettered  
pronounced plain rim  
these thimbles are modern brass



the sewing room



these tailor's thimbles available on the Merchant & Mills website

---



---

## ΜΕΤΑΞΩΤΑ "ΧΡΥΣΑΙΔΟΣ"

topic = SEWING THREAD  
("CHRYSAIDOS" SILK)



**AUSTRIA**  
**Settmacher Bros**  
tombac - red lacquered band  
vertically ribbed rim  
Greek lettering  
1930



green "glass" apex  
vertically ribbed rim



---

## Miele

topic = APPLIANCE



**GERMANY**  
**Gabler**  
cursive lettering over stippling  
c.1920-1930



narrower band  
cursive lettering  
c.1920-1930

---

## MORO-GENOVA

topic = ?



tombac  
worn blue band  
vertically ribbed rim

---

## MUNDLOS

topic = ?



name repeated  
vertically ribbed rim



---

## N.Bonten 1820 Dordrecht

topic = MERCHANT  
(Dutch)



b&w phot



---

## NAAIMACHINES LEWENSTEIN

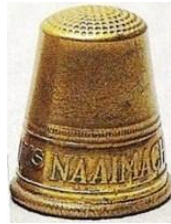
topic = SEWING MACHINE FROM GERMANY



### AUSTRIA

#### Settmacher Bros

tombac - red lacquered band  
red "glass" apex  
vertically ribbed rim



worn blue band  
vertically ribbed rim



---

## NATURAL SILK TEXTILES CREASE LESS

topic = SEWING THREAD



### AUSTRIA

#### Settmacher Bros

tombac  
vertically ribbed rim  
lettering in Arabic

C possible translation: National silks from Kariz al Youser Harayer Tabiih Kareez al Youser)

R possible translation: TO SEW A DRESS BY HAND – with two bands of Greek key

---



---

## NAUMANN NAHMASCHINEN

topic = SEWING MACHINE FROM GERMANY



lettering over horizontal ribbing

---

## NEWHOUSE

topic = ?



no rim

---

## OLD BUSHMILLS

topic = alcohol (IRISH WHISKEY)

see also: Sterling silver advertising thimbles



smooth sides, heavy rim

sterling silver identical example dated Birmingham 1987, exists  
with maker's mark **TLtd**

---

## OVB Cutlery Our Very Best Is The Very Best

topic = CUTLERY



white metal

---

## PERSIL LAVE TOUT

topic = LAUNDRY PRODUCT



**FRANCE**  
**Usines de Navarre**  
worn blue band



**FRANCE**  
**Usines de Navarre**





---

## PHARMACIE DE HAUSSY

topic = PHARMACY  
(France, still in operation)



blue band

the double pronounced bands suggests that this  
was the top off a sewing kit

---

## PHILLIPS ANNIVERSARY

topic = ALCOHOL (BEER)



blue band  
ribbed rope-like rim



---

## POST CREDIT JEWELERS 1130 State St. Erie, Pa.

topic = JEWELLER



USA

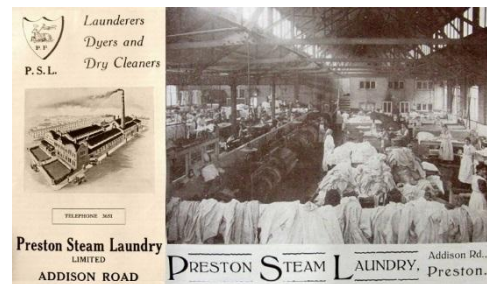
---

## PRESTON STEAM LAUNDRY

topic = LAUNDRY



ENGLAND  
Charles Iles  
vertically ribbed rim



---

### **"Putz mit Immalin"**

topic = POLISH



blue band  
vertical ribbed rim



---

### **Quieta als Kaffee**

topic = COFFEE MERCHANTS  
(in Germany)

see also: Heutzutage Quieta



**GERMANY**  
black band  
straight-sided  
ribbed rope-like rim



worn black band  
ribbed rope-like rim

---

### **QUIETA IN DER TAT DELIKAT !**

topic = COFFEE MERCHANTS  
(in Germany)



ribbed rope-like rim

---

### **REICHEIS HALL**

topic = MANUFACTURER  
(Austrian pasta firm – still in business today)



**GERMANY**  
straight-sided  
with company logo of an eagle

---

## ROGERS JEWELERS 317 7th St. Des Moines, Iowa

topic = JEWELLER



USA

---

## RUDOLPH'S *Dependable Jeweler* SINCE 1906

topic = JEWELLER



USA

---

## S.C.W.S. TEA

topic = TEA



ribbed rope-like rim

---

## SANADON FA DONNA SANA

topic = MEDICINAL  
(women's health)



green band  
straight-sided  
vertically ribbed rim



green band  
vertically ribbed rim





---

**SARTEL / sartel**  
topic = SEWING THREAD



**FRANCE**

advert name repeated  
thicker rims indicate this thimble formed the top  
of a sewing kit  
1910s



blue lettering on white band  
all lower-case lettering  
post-WWII thimble indentations  
aluminium – rare enough to include for  
completeness

---

**SCHNEEHAASE SEIFENPULVER**  
**D. REINHARDT STUTTGART**  
topic = LAUNDRY PRODUCT



**GERMANY**

R: vertically ribbed rim  
L: straight-sided with ribbed rope-like rim



---

**SHRIMPTON AND SON**  
topic = NEEDLEWORK TOOL



Steel  
size 4



ribbon threader simplex PPat12493\_21 RD682585

---

## SINGER VARRÓGÉPEK

topic = SEWING MACHINE  
(Hungarian)



---

## SINGER SEWING MACHINES

topic = SEWING MACHINE



unusual advertisement placement – the Singer logo  
is placed on the apex



---

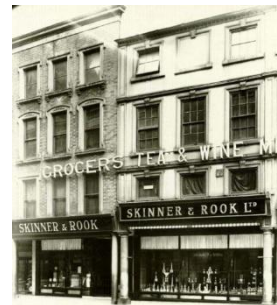
## SKINNER & ROOK

topic = MERCHANT  
(they were wine merchants in Nottingham, England)



**ENGLAND**  
**Charles Iles**

lettering over vertical striations



---

## SMITH'S KOFFIE EN THEE

Groningen, The Netherlands  
topic = COFFEE TEA  
(Dutch)



---

## Soie à coudre GÜTERMANN / GUTERMANN

topic = SEWING THREAD  
(German)

see also: Gütermann's ...

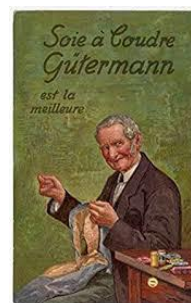


### FRANCE

with umlaut on GÜTERMANN  
with Gütermann's triangular trademark in blue  
vertically ribbed rim



without umlaut on GUTERMANN  
with Gütermann's triangular trademark  
vertically ribbed rim



---

## SPIGOL

topic = SPICES  
(French since 1876)



### FRANCE



worn red band



---

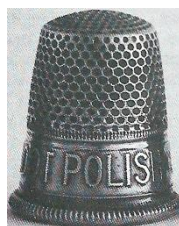
## SUNBEAM POLISH

topic = POLISH



### HOLLAND

worn blue or black bands  
vertically ribbed rim



### ENGLAND

Charles Iles  
vertically ribbed rim  
b&w photo





## SUNDWIGER MESSINGWERK 1698-1998

Hemen, Germany  
topic = BRASS



**GERMANY**  
**Karlheinz Prantl**

---

## SUROL *der Essig*

topic = VINEGAR  
(made by Carl Kühne, in Germany)



vertically ribbed rim



## SWITCH TO CALVERTS try a thimble-full

topic = ALCOHOL (WHISKEY)

see also: Calvert's



**USA**

---

## T.MATHEWS & CO. LTD. LEICESTER ENG. & NEW YORK. U.S.

topic = ?



**ENGLAND**  
**Kirby Baird & Co (K.B.C°)**  
aluminium  
#7

---

---

## THE BEEHIVE LTD

topic = ?



ENGLAND  
Charles Iles

---

## THE PRUDENTIAL – LIFE – INSURANCE

topic = INSURANCE

millions of the base metal thimbles were made



USA  
nickel plated brass  
Scovill Manufacturing Co



USA  
brass  
lettered Made in the U.S.A  
Scovill Manufacturing Co  
the brass ones are less common but still plentiful



USA  
nickel silver  
Scovill Manufacturing Co



USA  
nickel plated brass  
lettered Made in the U.S.A  
Scovill Manufacturing Co



---

## TIGER

topic = ?



tailor's thimble – size 4  
lettered upside down which faces the sewer  
brass-lined steel

---

---

## TITANIA SEPARATOR

topic = DAIRY CREAM SEPARATOR

see also: Ecremeuse Titania



ribbed rope-like rim



---

## UNION CHOCOLADE HAARLEM

topic = CHOCOLATE

(Dutch)



**HOLLAND**

red band

ribbed rope-like rim



---

## USE CLARK'S O.N.T. SPOOL CO

topic = SEWING THREAD

(O.N.T. – Our New Thread)

(thimbles produced before 1952 which is when Clarks and Coats merged)

see also: Clark & Co Ltd Paisley



**ENGLAND**

**Charles Iles**

with floral pattering



---

## USE HUDSON'S SOAP / USE HUDSON'S SOAP

topic = SOAP

From Aldridge, I learnt that Hudson's were a 19<sup>th</sup> century Lancashire firm and appears to have finally been merged into part of the Unilever empire in the 1960s



**J.R.G.S Ltd**

this thimble would have fitted  
onto a sewing kit  
lettering over vertical striations



narrow band  
higher copper content?





**ENGLAND**  
**Charles Iles**

lettering over vertical striations



flat apex

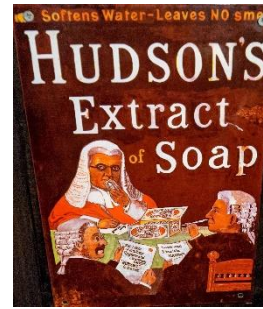


**ENGLAND**  
**Charles Iles**

lettering over vertical striations  
rare aluminium included for completeness



brass sewing kit  
lettered HUDSON'S SOAP



poorly struck example



**ENGLAND**  
**Charles Iles**

lettering over vertical striations  
blue band (tho this may have been overpainted?)  
rare aluminium included for completeness



## **USE MORRALL'S NEEDLES**

topic = NEEDLES

there are also thimbles of brass and other metals lettered Abel Morrall, sometimes with their trademark of a gryphon. These are brands not advertising thimbles



**ENGLAND**  
**Charles Iles**

cupro-nickel over striations



## USE VICARS' 'LUSTRINE'

topic = KNITTING THREAD



**ENGLAND**  
**Charles Iles**

lettering over vertical striations



## USINES DE NAVARRE

topic = MANUFACTURER

(metal factories in Navarre, France, who produced many of these brass thimbles)



**FRANCE**  
red band



**FRANCE**  
**Usines de Navarre**



strong pink band

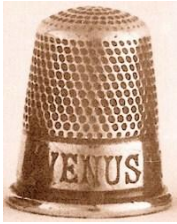


thimble with 'U N' mark



## VENUS SOAP

topic = SOAP



no rim



1895 advert

## W. HALL & CO

topic = NEEDLES

(these needle makers were based in Studley, Redditch in the UK)

Their trademark of an elephant appears on many of their products – tho not on the thimbles



ENGLAND

Charles Iles

lettering engraved



ENGLAND

Charles Iles

brass-lined steel



mahogany counter advertising chest



knitting needle brass guage

## "ZEBRA" Pour Fourneaux

topic = POLISH FOR GRATES



FRANCE

Usines de Navarre





## References

- Elizabeth Aldridge *Thoughts on thimbles*. Part X. 1983-1986 (unpublished but issued with TCI Bulletin)  
Christina Bertrand *Brass thimbles* (TCI). 1986  
Frederique Crestin-Billet *La folie des des a coudre*. 2003  
Frederique Crestin-Billet *Ouvrages de dames: mercerie, broderie*. Catalogue 2005  
Franz Groiss *Thimble factory in Vienna founded 1863*. 1990  
Edwin Holmes *History of thimbles*. 1985  
Adrienne de Smet *De Vingerhoed in het kunstambacht*. 1992  
Norma Spicer *Equity Shoes The Thimble Society* winter 2009  
Kay Sullivan *Needlework tools and accessories: a Dutch tradition*. 2004  
The Thimble Society (of London) catalogues 1981-2009  
Sandy Woodyard *Pocket sewing kits*. 2006

## Contributors

Christina Bertrand | Sue Caesar | Ros Forster | Elaine Graveston | Brian Hall-Weavers' Triangle Trust  
William Isbister | Ann Jones | Ray Nimmo | Ro Olbricht | Elaine Rogers | Wolf-Dieter Scholz | Norma Shattock  
Leonard Smith | Willy Swart | Sue Wilson

With advertising thimbles, it is preferable to have the entire slogan showing, so as many views as you can share would be appreciated - thank you!

This listing of Brass advertising thimbles does not purport to be complete or accurate in all aspects. Rather it invites comment and contribution to add to our knowledge. My thanks to the contributors.

EMAIL [thimbleselect@bigpond.com](mailto:thimbleselect@bigpond.com) TO SHARE YOUR KNOWLEDGE.

**© Sue Gowan  
January 2009**