

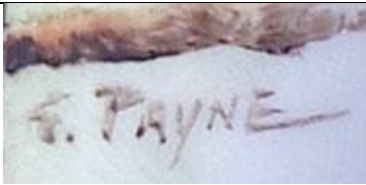
# Graham Payne

Worcester England

Graham Payne was a freehand miniature painter on thimbles - so talented, which is borne out by the fact that he painted both china and enamelled thimbles. The earliest thimbles I can find are dated 1981. Payne who was based in Grimley, Worcester, used several different Payne backstamps and a date is mostly incorporated alongside. Note the date of each photo to give a timeline. Most have the 'e' in Payne joined by an underscore which includes the date.

		
Hand painted Graham Payne Studios Worcester seems to have only been used on enamelled thimbles	Payne Grimley Worcs's	Payne Worcester
		
Payne Worcs' / Payne Worcs		Payne
		
Payne Worcs', England	Payne U.K.	
		
Graham Payne	Payne	

Some of the thimbles from the Studio also bear a signature or initials of the painter and this includes Graham Payne's (G Payne/GP) signature or initials. Other painters employed include JS/John Smith - these initials sometimes look like SS - they are rather for Steve Smith - J Oram for Judy Oram and RW for Rosemary Waldron, PG, VT and WM. I can't find any artist for the last two sets of initials that match any amongst the Royal Worcester where most of these painters were trained. You will find these signatures on both the china and enamelled thimbles.



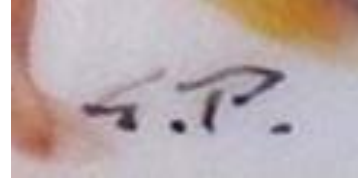
china



enamelled



enamelled



china

various Graham Payne signatures



china

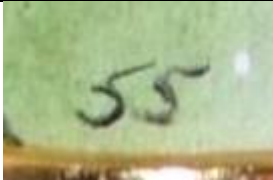


enamelled



enamelled

various John Smith signatures found mainly on enamelled thimbles



enamelled

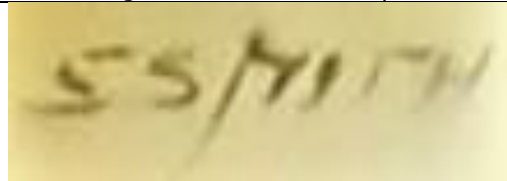


enamelled



china

various Steve Smith signatures found mainly on enamelled thimbles



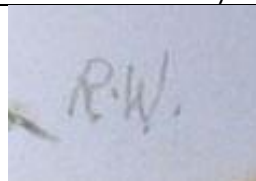
enamelled

Steve Smith signature found on enamelled Just a Thimblefull thimbles



china

Judy Oram signature - found only on china thimbles



enamelled

Rosemary Waldron signature found mainly on china thimbles



enamelled

VT found on only one example



enamelled

WM found on only one example



PG

The first mention that I can trace in the thimble literature is in 1981, in the first issue of *The Thimble Society of London* (winter 1981) - there are black and white photos and line drawings of the thimbles for the sportsmen, advertising and the Victorian designs thimbles. I am sure that Payne began painting thimbles before these sets were advertised in 1981, but I have yet to find this information. My opinion is that Payne only produced thimbles from the 1981 to 1996, so it is important to record them now - for posterity. From the dated examples illustrated below, 1982 was the most prolific year from GP. So far 1987 1989 1990 1991 and 1994 have no recorded thimbles. Please share a photo if your Payne thimbles bear one of these dates.

*Thimbles Only* of California, first had Payne thimbles for sale in their winter 1983 catalogue.  
*The Thimble Collectors Guild* of Scotland, had Payne thimbles for sale in 1983-1984 and 1995.

It would be wonderful to establish whether Graham Payne, who was based in the same town as the Royal Worcester works, was Royal Worcester-trained?

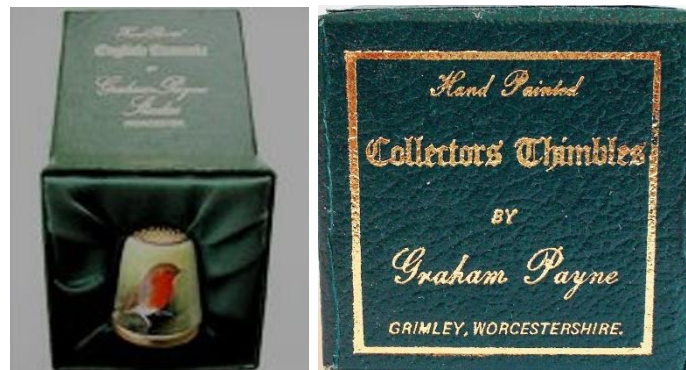
Whilst browsing thru catalogues from the early 1980s, I had a lovely surprise. A handpainted glass thimble by Graham Payne – so a new category to join his china and enamelled range. Other examples are now surfacing.

Payne also accepted commissions to create and paint personalised thimbles. This only entailed sending a photo of the subject - your home, a pet.

Payne (the name of the company) also produced handpainted china bells, pillboxes, spoons and enamelled napkin rings. Anything else?

The Thimble Society of London reported his death in 1996.

I find these thimbles so appealing that I will try and feature multiple examples of each, so that you too can enjoy his talent!



boxed example with box lid details



handpainted enameled spoons



handpainted enameled pill boxes



handpainted enameled napkin/serviette ring



handpainted enameled napkin/serviette rings, including an egg cup and box



handpainted china bell  
 'Graham Payne Studios 82'  
 there is a matching thimble ; see Garden birds

For other handpainted thimble topics see





Australian handpainted thimbles  
British modern handpainted thimbles  
Gerald Delaney handpainted thimbles  
Jasper's of Yorkshire handpainted thimbles  
Royal Worcester thimble painters

## CHINA RANGE

The range of thimbles used for these handpainted miniatures have a distinctive shape with a slightly bulbous rim with fine fluting. These blanks were used between 1981 and 1982 when a better, straighter shape of thimble was used.

### Advertisements

handpainted, signed and dated, numbered & limited edition of 250  
taken from 1920s advertisements

			
<u>BOVRIL Don't forget the Bovril</u>	<u>BOVRIL I think I like you better as Bovril</u>	<u>BOVRIL - Alas my poor brother</u>	<u>Turnwright's as Toffee De-Light</u>


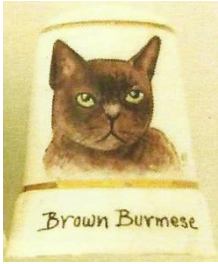
### Animals

handpainted, signed and dated

no photo	no photo	no photo	no photo	no photo	
<u>Dormouse</u>	<u>Fox</u>	<u>Hare</u>	<u>Hedgehog</u>	<u>Ladybird</u>	<u>Squirrel</u> bulbous rim with fine fluting

## Cats

handpainted, signed and dated  
see also: Others for a different group of cat thimbles

<p>no photo</p> <p><u>Angora</u></p>	<p>no photo</p> <p><u>Black Shorthair</u></p>	
 <p><u>Blue Smoke Persian</u> R: <u>Blue Smoke</u> 'Payne 83 U.K./'Payne 82 Worc's' signed <u>RW</u> for Rosemary Waldron</p>	<p>no photo</p> <p><u>Blue Tabby</u></p>	
 <p><u>Brown Burmese</u> 'Payne 82 Worc's'</p>	 <p><u>Calico Persian</u> 'Payne 82 Worc's'</p>	 <p><u>Himalayan</u></p>
<p>no photo</p> <p><u>Seal Point</u></p>	 <p><u>Siamese (Blue Point)</u></p>	<p>no photo</p> <p><u>White Longhair</u></p>

## Commemoratives

handpainted, signed and dated – 1981 – 1995

in date order which shows the progression of the shape of thimble used and the type of decoration



Christmas 1981  
'Graham Payne 81'  
signed GP for Graham Payne  
numbered & limited edition of 100



Christmas 1981  
'Graham Payne 81 Grimley Worcs'  
signed GP for Graham Payne  
gold-painted apex



The Year of the Scout  
1907-1982  
'Payne 82 Worcs'  
signed RW for Rosemary Waldron  
numbered & limited edition of 100  
gold-painted apex



The Year of the Scout  
1907-1982  
'Payne 83'  
numbered & limited edition of 100  
plain apex, different rim



Christmas 1982  
'Payne 82'  
signed RW for Rosemary Waldron  
numbered & limited edition of 250  
gold-painted apex



Easter 1982  
'Payne 82'  
signed RW for Rosemary Waldron  
numbered & limited edition of 250  
gold-painted apex



Falklands Liberation June 14th 1982  
 'Payne 82'  
 numbered & limited edition of 250



The Mary Rose raised October 11th 1982  
 'Payne 83'  
 numbered & limited edition of 250  
 flat-topped thimble  
 see also enamelled version



Easter 1986  
 'Payne 86'  
 numbered & limited edition of 150



Edinburgh 1986  
 'Payne 86'  
 Commonwealth Games Scotland  
 with Mac the Games' mascot



Mother's Day '86  
 'Payne 86'



King George V 1865-1936  
 'Payne 86'  
 signed GP for Graham Payne  
 numbered & limited edition of 50



Christmas 1992  
 'Payne 92'  
 numbered & limited edition of 200  
 different china blanks used  
 self-patterned floral apex



Golly  
 1995  
 commemorate the centenary of Frances Upton's  
 Golliwog  
 numbered & limited edition of 100  
 signed GP for Graham Payne



**Garden birds and others**  
(using more-or-less same-shaped thimbles)  
handpainted, signed and dated

see also: 'Other Birds' for a different group of bird on thimbles



Blue tit  
'Payne 82 Grimley Worc's'



Bullfinch  
'Payne 82 Worc's'  
R: gold-painted apex  
'Payne 82'  
signed GP for Graham Payne



Capercaillie  
1981



Cardinal  
'Payne 82 Worc's'  
signed RW for Rosemary Waldron



Chaffinch  
'Payne 82'  
signed JS for John Smith



Dartford Warbler  
'Graham Payne Studios 82'  
signed GP for Graham Payne



Diamond Finch.(Australia)  
'Payne 82 Grimley Worc's'  
signed G Payne  
numbered '5'



Goldcrest  
'Payne 82'  
signed AP  
could this just be a poor signature for GP?



Goldfinch - Canary Mule  
signed G Payne



Greenfinch  
'Payne 82'

no photo

Jay



Linnet  
1982

no photo

]

Maggie



Marsh Tit  
'Payne 82 Grimley, Worcs'  
signed G Payne



Scarlet Macaw  
'Payne 82'



Waxwing  
'Graham Payne 81 Worcs'  
signed GP for Graham Payne



Robin

'Payne 82 Worcs'

centre: signed SS for S Smith

[some of the robin thimbles have 'Christmas 1981']

2<sup>nd</sup> right: signed by RW for Rosemary Waldron, with fewer gold lines - 'Payne 82 Worcs'  
numbered & limited edition of 200

R: signed GP for Graham Payne - 'Payne 82'



Wood Pigeon

'Payne 82'

signed GP for Graham Payne, tho poorly executed, seemingly like CP



Wren  
 'Payne 82 Worcs's'  
 signed SS for S Smith

no photo

Yellow hammer

**Other birds**



Barn owl  
 limited edition of 50



duck  
 'Payne 88'  
 gold-painted apex  
 numbered & limited edition of 300



duck  
 'Payne 92'  
 gold-painted apex



duck - flying  
 'Payne 86'  
 shape like his Garden birds series



Old English Game  
Silver duckwing  
 'Payne 81'  
 shape like his Garden birds series  
 numbered & limited edition



owl  
 R: 92



owl



pheasant  
'Payne 85'



pheasant  
'Payne 95'  
gold-painted apex



rooster  
'Payne 92'  
gold-painted apex  
numbered & limited edition of 300



Shelduck  
'Payne 96'  
gold-painted apex



thrush (?)

### Sportsmen

handpainted, signed and dated, numbered & limited edition of 50



Boxer c.1802

'Payne 82 Grimley Worcs'  
'Acanthus Cheltenham'

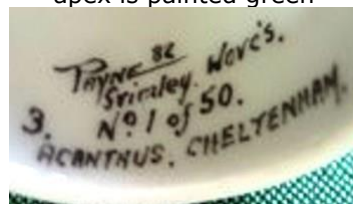
lettering refers to a gift shop Acanthus at 12 Montpelier Arcade, Cheltenham where some of these thimbles sold

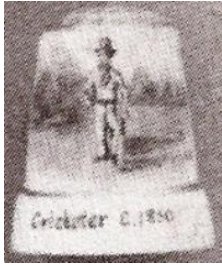
3 alongside the backstamp

may refer to this boxer being the 3rd of 4 designs?

signed RW for Rosemary Waldron

apex is painted green





Cricketer



Footballer



Jockey c.1800  
'Payne 82'  
gold-painted apex

### Trees

handpainted, signed and dated

no photo

Beech



Black Mulberry  
'Payne 81 Worcs'



English Elm

no photo

Fir

no photo

Holly



Norway Spruce  
'Payne 84'

no photo

Silver birch

no photo

Sycamore

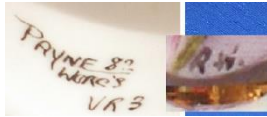
## Victorian designs

handpainted, signed and dated

the bulbous rim particularly enhances these handpainted designs

the descriptions come from the 1982 The Thimble Society of London catalogue

the raised handpainted coloured dots are reminiscent of 19th century Royal Worcester thimbles



raised turquoise dots, primrose in  
cameo  
'Payne 82 Worc's VR3'  
signed RW for Rosemary Waldron



inset country scene



turquoise dots beading, black  
cameo, gilding



beaded rim, gilded swags, roses



beaded rim, inset painting of  
pheasant and foliage  
'Payne 82 Worc's VR6'



Imari type pattern, red, blue and  
gold



beaded rim in turquoise, blue swags with poppies  
this pattern wasn't featured by the Thimble Society of London – it's a later date  
there is no signature just a sticky label '21 G Payne 19.984'  
this could be the previous owner's label?



this sample thimble was commissioned by Heirloom Editions in the USA but never went into production.  
They named it 'Royal Crown Derby'. It seems very similar to the Imari design above?

## Others

handpainted, signed and dated  
arranged in date order – where known  
as these evolve into sets – I will separate them by topic  
it is easier to follow the evolving shape of the thimble blanks used - year by year



snipe

this has been attributed to Payne but we need further information to leave this photo here



black and white kitten  
'Payne 82 Worc's'



butterfly on flowers  
'Payne 81 Grimley Worc's'  
signed G Payne



roses  
'Payne 81 Grimley Worc's'  
signed G Payne



'Payne 81 Grimley Worc's'  
signed G Payne



'Payne 81 Grimley Worc's'  
signed GP for Graham Payne



brown trout  
'Payne 81'



rainbow trout  
'Payne 81'



Adonis Blue  
'Payne 82'



Marbled White  
'Payne 82'



Small Copper  
'Payne 82'



Morning glory  
'Payne 82 Worc's, England'



Charlie (jester)  
L: 'Payne 82' - R: 'Payne 86'  
numbered & limited edition of 300



daisies  
'Payne 82'  
signed J Oram



forget-me-nots  
'Payne 82'  
signed J Oram



foxgloves  
'Payne 82'  
signed GP for Graham Payne



fruit - peaches  
1982



fruit - peaches  
'Payne 82 Worc's'  
signed PG



Shakespeare's Birthplace.  
'Payne 82'  
signed RW for Rosemary Waldron  
commissioned 'for Selectaste.'





snowdrops  
'Payne 82'  
signed GP for Graham Payne  
bulbous rim with fine fluting



windmill  
'Payne 82'  
signed GP for Graham Payne



Anne Hathaway's Cottage  
'Payne 83'  
signed JS for John Smith



Siamese  
'Payne 83 U.K.'



William Shakespeare  
1564-1616  
'Payne 83'



chicken - hen  
'Payne 85'  
signed GP for Graham Payne



fruit - peach/grapes  
'Payne 85'



woolly bear  
'Payne 85'



Andy  
'Payne 86'  
numbered & limited edition of 300  
(see also Commemoratives)



Binky  
'Payne 86'  
numbered & limited edition of 300



Humphrey  
'Payne 86'



Lucy  
'Payne 86'



Miming  
'Payne 86'



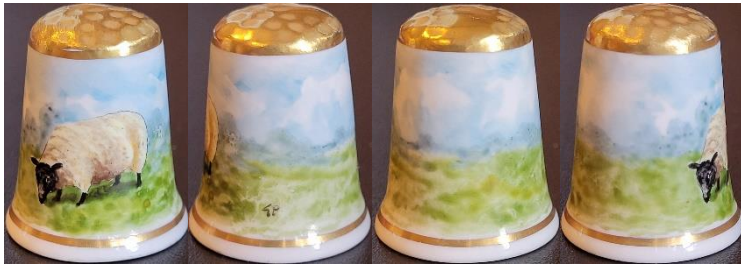
Pierrette  
'Payne 86'  
see also: 1988 Pierret and 1996 pierrot



pig  
'Payne 86'  
numbered & limited edition of 300  
gold-painted apex



rabbit  
'Payne 86'  
numbered & limited edition of 300  
signed GP for Graham Payne  
gold-painted apex



sheep  
'Payne 86'  
numbered & limited edition of 300  
signed GP for Graham Payne  
gold-painted apex



skating bear  
'Payne 86'



sledging teddy bear  
'Payne 86'



snow bear  
'Payne 86'



strawberries  
'Payne 86'  
signed GP for Graham Payne  
bulbous rim with fine fluting



fruit - peaches/grapes  
'Payne 88'  
gold-painted apex



Pierret  
'Payne 88'  
signed GP for Graham Payne  
numbered & limited edition of 300  
see also: 1986 Pierrette and 1996 pierrot



American robin  
'Payne 92'



soldier teddy  
1993

numbered & limited edition of 100



fruit - apples/grapes  
'Payne 96'  
gold-painted apex



fruit - apples/grapes  
'Payne 96'  
gold-painted apex



fruit - apples/grapes  
'Payne 96'  
gold-painted apex



fruit - peaches/grapes  
'Payne 96'  
gold-painted apex



fruit - peaches  
'Payne 96'  
gold-painted apex  
signed JS for John Smith



fruit - pears  
'Payne 96'  
gold-painted apex  
signed JS for John Smith



fruit - pears/grapes  
'Payne 96'  
gold-painted apex



fruit - pears/grapes  
'Payne 96'  
gold-painted apex  
signed JS for John Smith



fruit  
'Payne 96'  
gold-painted apex  
signed JS for John Smith



pierrot  
'Payne 96'  
signed GP for Graham Payne  
yellow ground/gold-painted apex  
see also: 1986 Pierrette and 1988 Pierret

### Undated or date unknown



apple



crouching cat in a field



flowers  
signed GP for Graham Payne



strawberries with yellow background



tabby



thatched cottage  
gold-painted apex

# ENAMELLING over BRASS THIMBLES

The range of Payne's freehand handpainted enamelled thimbles is much smaller than his china range  
 I am aware of other painters painting enamelled thimbles for the Graham Payne Studio  
 there are several enamelled thimbles signed by JS for John Smith which are all dated 1983  
 painter's initials SS for S Smith, with the occasional RW for Rosemary Waldron.  
 I am not familiar with British birds – please help me name the birds I have left unnamed at the end.

for other enamelled thimbles topics see:

- British modern enamelled thimbles
- Cornish Enamels thimbles
- Crummles enamelled thimbles
- Peter Swingler handpainted thimbles

## Birds

handpainted, signed and dated



barn owl  
 'Payne 83 Worc's'



blue tit  
 1983; R: 'Payne 84', signed JS for John Smith  
 R: bird facing right



bullfinch  
 'Payne 83'



chaffinch  
 L: birds facing left 'Handpainted Graham Payne Studios Worcester 83'  
 L: signed by JS  
 C: signed G Payne and SS for Steve Smith  
 R: bird facing right 'Handpainted Graham Payne Studios Worcester'



flycatcher  
 'Payne 83 Worc's'  
 signed SS for Steve Smith



goldfinch  
 'Handpainted Graham Payne Studios Worcester 81'  
 signed SS for S Smith



great tit  
 'Payne 82 Worc's'  
 signed JS for John Smith



kingfisher

1983 and 1984

L: 'Payne 83 Worcs'

C L: undated but all are signed JS for John Smith  
C R: 'Handpainted Graham Payne Studios Worcester'

2<sup>nd</sup> R: 'Payne 84'

R: SS for Steve Smith



lapwing

'Payne 82 Worcs'  
signed JS for John Smith



pheasant

R: 'Handpainted Graham Payne Studios Worcester', signed SS for S Smith  
numbered & limited edition of 750

commissioned by *The Thimble Collectors Guild* in October 1983 entitled 'The Cock Pheasant'



This b&w photo shows the lettering 'Pheasant' which those above don't have in the same position



robin

L: bird facing right 'Payne 83' – next: bird facing right 'Payne 82 Worcs' - R: bird facing right 'Payne 82 Worcs' all signed JS for John Smith



stonechat  
'Payne 82 Worcs'  
signed JS for John Smith



warbler  
signed SS for S Smith



willow warbler  
'Payne 82 Worcs'  
signed SS for S Smith



woodpecker  
'Payne 83 Worcs'



woodpecker  
'Payne 83 Worcs'



wren - i  
L: bird facing left 'Handpainted Graham Payne Studios Worcester' signed SS for S Smith  
next: bird facing right 'Payne 83 Worcs' signed JS for John Smith  
next: bird facing left 'Payne 82 Worcs'  
R: 'Payne 83 Worcs'



wren - ii  
bird is on a branch  
'G. Payne' under the bird name  
'Payne 81'  
'Acanthus Cheltenham' lettered inside  
refers to a gift shop Acanthus at 12 Montpelier Arcade,  
Cheltenham where some of these thimbles sold



'Handpainted Graham Payne Studios Worcester'



'Payne 83 Worcs'



black-throated ...  
signed JS for John Smith



'Handpainted Graham Payne Studios Worcester'



signed JS for John Smith



'Payne 83 Worcs'  
signed JS for John Smith

### Commemoratives

handpainted, signed and dated



Christmas 1981  
1981

numbered & limited edition of 100

L: signed GP for Graham Payne – star over the stable

R: signed Graham Payne



The Mary Rose raised October 11th 1982

'Payne 83 Worcs'

numbered & limited edition of 250

see also china version







Christmas 1983  
1983

'Handpainted Graham Payne Studios Worcester'  
numbered & limited edition of 250  
signed JS for John Smith  
top R: silver grey Santa sack

this thimble was offered for sale by *The Thimble Collectors Guild* in November 1983, entitled 'Santa's Noggin'  
bottom thimbles show a different handpainter signed WM

It is the first time I have found this – the same Graham Payne thimble design handpainted by two different painters



1984  
Worcester Cathedral 900th Anniversary  
 'Payne 84'  
 numbered & limited edition of 150



1984  
Sir Edward Elgar 1857-1934  
 'Handpainted Graham Payne Studios  
 Worcester'  
 signed JS for John Smith  
 numbered & limited edition of 100  
 this thimble was offered for sale by *The  
 Thimble Collectors Guild* in January 1984

### Dogs

handpainted, signed and dated



Beagle  
 'Payne 83'  
 signed JS for John Smith

no photo

Black Labrador



Cocker spaniel  
 'Payne 83'  
 signed JS for John Smith

no photo

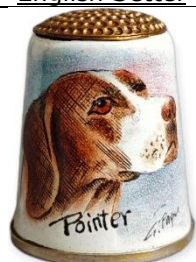
Dachshund



English Setter



Irish Setter



Pointer  
 'Payne 82'  
 signed G Payne Worcester

no photo

Poodle

no photo

St Bernard

**Others**

handpainted, signed and dated  
arranged in date order – where known



Bird's nest  
'Payne 81 Worcester'  
signed G Payne



Sickener  
'Payne 81 Worcester'  
signed G Payne



Inez Eijkelenboom  
Zoals zij altijd in onze gedachten zal voortleven.  
Rechts ziet u haar originele visitekaartje, met de naam  
Mrs. Oaktree, zoals zij zich in Engeland presenteerde.



Mrs. Oaktree

this is an example of commissioned thimbles

'Payne 82'

numbered & limited edition of 100

Mrs Oaktree was a Dutch thimble dealer and collector  
whose name was Inez Eijkelenboom (1930-2005)



fuchsia  
'Payne 82 Worcs'



Brimstone  
'Payne 82'



Small Copper  
'Payne 82'  
no brass rim



bee  
'Payne 83 Worcs'  
signed SS for S Smith



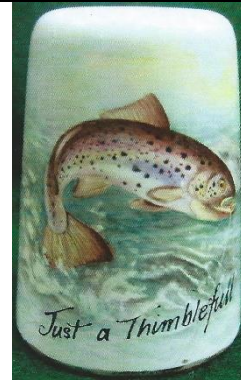
frog  
'Payne '83 Worcs'  
signed JS for John Smith



hare  
'Payne '83 Worcs'



Just a Thimblefull  
Pheasant  
'Graham Payne Studios '83 Worcester'  
signed S Smith



Just a Thimblefull  
Trout  
'Graham Payne Studios '83 Worcester'  
no brass rim



ladybird  
1983  
signed SS for S Smith



Oakham Church and Castle  
'Payne '83 Worcs'



otter  
'Handpainted Graham Payne Studios '83 Worcester'  
signed JS for John Smith



primroses  
'Payne '83 Worcs'



Red & Blue macaw S. America  
'Payne '81 Worcester'  
signed G.P



Stoat  
'Payne '81 Worcester'  
signed Graham Payne



thistles  
'Payne 83 Worcs'  
signed RW for Rosemary Waldron



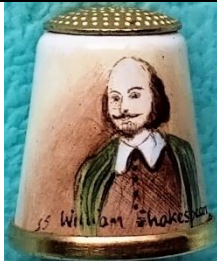
Shakespeare's birthplace  
'Payne 83 Worcs'



orange flower  
1983



unknown animal  
'Payne 83 Worcs'  
signed SS for S Smith



William Shakespeare  
'Payne 83 Worcs'  
signed SS for S Smith



Fruit 'Payne 84'

### Undated or date unknown



pansy  
'Handpainted Graham Payne Studios Worcester'  
not dated



rose  
signed by VI



squirrel



teddy  
'Handpainted Graham Payne Studios Worcester'



teddy 'Nº. 1'

'Handpainted Graham Payne Studios Worcester'  
not dated



teddy 'Nº. 6'

'Handpainted Graham Payne Studios Worcester'  
not dated  
some examples are missing the numbering inside



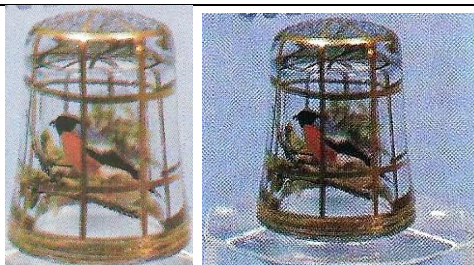
Dreams

unsigned – is this from Graham Payne?  
Is there a GP for Graham Payne signature in this blue sprig?  
'hand painted in the U.K.'  
numbered & limited edition of 250

the Harlequin design matches the logo of Cecile Dreesmann  
which features in her book Een vingerhoedje... A thimble full... Dreams, vol. 3 (1983)  
there is an accompanying egg-shaped thimble holder  
the eggs were limited to 50

I will leave this one as attributed to GP unless I am told to the contrary

## GLASS THIMBLES



birdcage

bird painted on the inside of the glass  
gold of cage has been painted on the outside!

R: showing glass base

when a consignment of these delicate glass thimbles arrived smashed in the US for sale, Payne never made more  
of these true masterpiece thimbles – they were US\$50 back in 1983



yellow bird

signed GP for Graham Payne under the branch to R of photo

## References

Mabel Rogers *My favourite convention find: Graham Payne thimbleful.* TCI Bulletin fall 2014

## Contributors

Wendi Aguiar | Marta Valencia Betran | Joanna Blackie-Sew Many Bits | Pawel Brzyski | Elaine Graveston  
Linda Heggs | William Isbister | Anne Jones | Friedy Kamp | Doreen Lilley-Pricklepin | Mary Agnes Mosher  
Terry Neilson | Kathleen Rastall | Pat Rich | Mabel Rogers | Linda Samaripa | Wolf-Dieter Scholz | Irene Schwall  
Gai Sdao | Jean Shoup-Thimbles Only | Ian Spriggs | Jean Taylor | Barbra Wallace | Krystyna Zagajewska

This listing of Graham Payne handpainted thimbles does not purport to be complete or accurate in all aspects.

Rather it invites comment and contribution to add to our knowledge. My thanks to the contributors.

EMAIL [thimbleselect@bigpond.com](mailto:thimbleselect@bigpond.com) TO SHARE YOUR KNOWLEDGE

© **Sue Gowan**  
**July 2013**