

Modern British handpainted china thimbles

1978-2022

At the start of the modern thimble collecting era of the late 1970s, some of Great Britain's china houses produced handpainted thimbles. This was a time consuming and costly exercise. The demand avalanche for instant and cheaper thimbles swamped thimble manufacturers as we entered 1980. The porcelain houses realised that creating their own decals or transfers using a skilled artist would speed up production and an unlimited number could be churned out.

Initially companies like Caverswall had their artists hand-touch their designs with spots of paint and you will find artists' names like William Tipton, John Ball, C Nunn, Holmes Gray or Mary Grant named on the thimbles. These are not handpainted thimbles: just hand-touched.

Sutherland, who produced china thimbles the longest, made thimbles in the same way – but didn't even follow the hand-touched route. Some of their thimbles are labelled hand enamelled. Rather a few spots of enamel enhances the design – this is known as champleve. JB, ME and PH Pauline Haughton are initials found on Sutherland thimbles enhanced in this manner.

Royal Worcester, the doyenne of handpainted thimbles from the 1870s, faced the same problem. They did not want to employ more artists and thimbles are time-consuming to paint freehand with at least three firings. In the 1970s, the foreman of the painters' division, Edward Townsend, came up with a solution. He designed a number of outline prints - which were printed onto the blank thimbles. The artists did not have to create an individual painting but merely coloured in the blank design. This speeded up the process noticeably. Even that didn't help as by 1986, the last handpainted RW thimble was painted. They turned to decal thimbles to keep up with demand.

The pendulum did begin to swing back in the 1990s and handpainted thimbles came back into their own in the small numbers as before.

The artists had access to blank thimbles from any source. This would give them creative freedom and some commercial success.

Handpainted thimbles take a while to paint, so they are created in a limited supply.

Many of the artists didn't only paint thimbles – they formed a minute part of their output. They painted vases, plates, brooches, lidded jars, figurines of fauna, paintings, coffee pots, miniatures and handpainted enamel boxes etc.

A few of these artists have painted on wood, glass and silver thimbles and on enamel. They are outside the scope of this topic. Thimbles with handpainted flowers affixed will also not feature here.

[See my topics on specific British painters of china thimbles:](#)

Graham Payne (1981) who employed at least six freelance painters
Gerald Delaney

Jasper's of Yorkshire (Margaret and Mandy Palmer)

Francesca employed at least 16 thimble artists and other character head thimbles makers number 20
Royal Worcester thimble painters

I have featured **30** British thimble handpainters.

When I have fewer than five thimble examples from specific painters – they will follow at the end of the section of thimbles - both in alphabetical order by painter's surname.

Along the way I have learnt heaps – and I can now recognise thimbles painted by these artists. It takes sheer talent to paint accurately on such a small area of china. I hope you will enjoy the journey as much as I have.

For other handpainted thimble topics see

- Australian handpainted thimbles
- Francesca and other character head thimbles
- Gerald Delaney handpainted thimbles
- Graham Payne handpainted thimbles
- Jasper's of Yorkshire handpainted thimbles
- Royal Worcester thimble painters

Specific British thimble china painters

Anne Blades

Blades was born in Port Talbot in 1953, grew up in Guildford and returned to live in Wales in 1968 she studied industrial ceramics and china painting became her passion in 1984 opened her ceramics studio – Anne Blades Ceramics Anne opened her own shop and gallery, Blades – The Artworks in 1997 in Mumbles (Mwmbwls), Swansea in Wales her thimbles are distinctive in that they have a daffodil design pressed into the apex AB with a date letter is her maker's mark on the inside source: <https://www.anneblades.co.uk/about/>



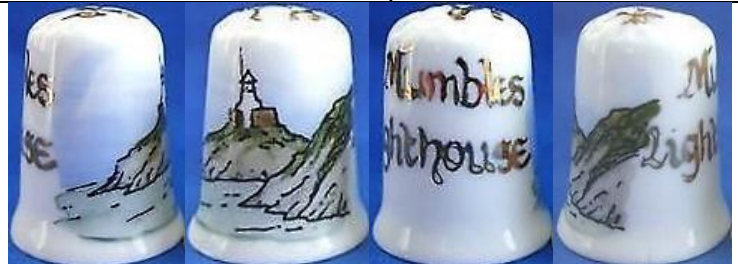
Caswell Bay



holly



Ich Dien



Mumbles Lighthouse



Three Cliffs Gower



Worms Head

David Bowkett

Bowkett was a Royal Worcester trained artist and worked there between 1948-1962

he moved to Cornwall and bought a pub in the 1970s

David opened his own studio in Devon

he began to paint thimbles in 2002

this is where his RW training came to the fore – using birds and fruit themes painted on bone china

these included the signature on the outside and the traditional sprig on the verso

thimbles have the David Bowkett backstamp and his signature is D Bowkett

Bowkett died in 2009

if there is a small china hook on the back of the item – it is a tiny candlesnuffer – they can be mistaken for thimbles. His figurals have indentations on the head



candlesnuffer



R: his mark for character-shaped thimbles





bird - Kingfisher



choirboy - i



choirboy - ii



cricketer



golfer

tho character-shaped, this is not a candlesnuffer
backstamp is slightly different for the character-shaped thimbles
fine bone china



Gigi Branch

Gigi trained at Limoges in France then settled in Devon
 were her thimbles only painted in 1983?

thimbles signed inside Gigi

see also topic Glass and crystal thimbles for her painting on glass thimbles



Christmas 1983
 carollers



Christmas 1983
 holly leaves
 red enamelling on lace-like ground
 dated and numbered
 limited to 100



Forget me nots
 May 1983
 b&w photo



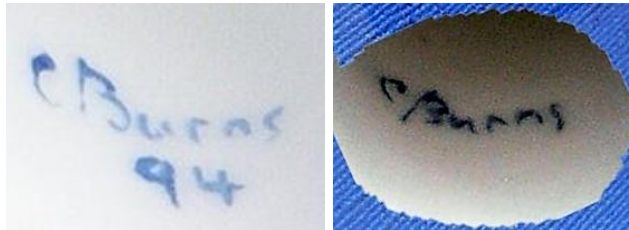
Prince William 1st birthday
 21.6.83
 royal symbols painted all round



Christopher Burns

Chris Burns is a Royal Worcester trained artist
 in 1987 when RW were no longer producing handpainted thimbles, Burns opened his own studio in the
 Malvern Hills, Worcestershire
 here he established Harcourt China
 before the use of this mark, the thimbles were marked Malvern England
 he provided thimbles to The Thimble Guild (1987-1994, and again in 2005). I have used the catalogue
 dates

his thimbles are not dated (with one exception in **1994**)
 there is a lovely range of designs capturing the surrounding English countryside. His thimbles evolved to
 sculpt thimbles in relief giving a three dimensional aspect
 thimbles have the Harcourt China backstamp and his signature C Burns is located on the inside
 thimbles are not named – I have used names from the TTG catalogues etc



L: early blue Malvern mark (Type 1) - C: no brand name Handpainted in England (Type 2)

 A stroll thru the woods limited to 200 TTG June 1993	 Autumn fruits TTG November 1990	 Barn Owl TTG August 2005	 bee TTG June 1993
 bird of prey pink ground	 bird of prey pink ground	 Blue tit TTG January 1988	



British garden birds
Blue tit
TTG October 1987
(set of twelve)



British garden birds
Bullfinch
TTG October 1987



British garden birds
Firecrest
TTG October 1987



British garden birds
Goldfinch
TTG October 1987



British garden birds
Robin
TTG October 1987



British garden birds
Sparrow
TTG October 1987



British garden birds
Thrush
TTG October 1987



British garden birds
Wren
TTG October 1987



British garden birds
TTG October 1987



comet Hale-Bopp



Cottage
TTG October 1998



Cottage
TTG October 1998



Cottage
TTG October 1998



Cottage
TTG October 1998



English cathedral
TTG December 1993

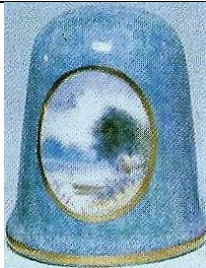




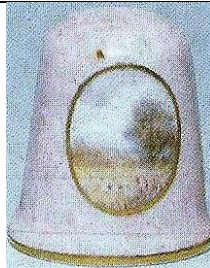
English cathedral
limited to 450
TTG April 1992



English countryside
set of six on pink ground with cameo scenes
TTG July 1989 - TSL summer 1989



English countryside
blue ground with cameo scene
TSL summer 1989



English countryside
pink ground with cameo scene
TSL summer 1989



English countryside
pink ground with cameo scene
Type 2 backstamp



Holly
pink ground with champeled holly
Thimble Society of London winter 1989
limited to 450
TTG December 1992



Kingfisher with fish
L: type 1 mark



Kingfisher
limited to 200
TTG June 1988



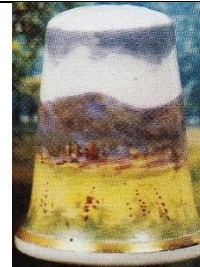
Ladybird
thimbles have the 1994 dated signature
TTG July 1994



Little owl
limited to 200
TTG August 1991



Madonna
TTG December 1991



Malvern Hills
1993
panorama scene all round
limited to 375



Mercat Cross
(street in Wyre Evesham)
limited to 250
TTG February 1993



Mr and Mrs Owl
TTG July 1992



Peregrine
TTG February 1990



pig
TSL summer 1991



Postbox at Crophorne
(in Evesham)
limited to 375
1993



robin



robin
pink ground with cameo



Rose cottage
TTG January 1992



Salmon
pink ground
limited to 250
TTG December 1991



Shepherd's cottage
TTG January 1992



Snowy Owl
TTG August 2005



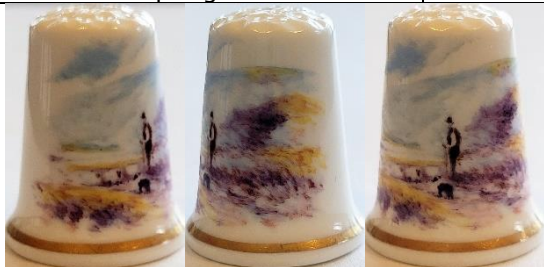
St Paul's Cathedral
limited to 375
TTG November 1992
TSL spring 1993



Summer Serenity
TTG June 1990



Thatched cottage
TTG January 1992



The lone shepherd
September 1992



Village church
September 1991
limited to 250



Wren



Windmill
TTG March 1989 - TSL autumn 1990



woman shopping

Peter Carver

I first came into contact with Peter Carver from Solihull in West Midlands in 2013 thru a Canadian thimble collector

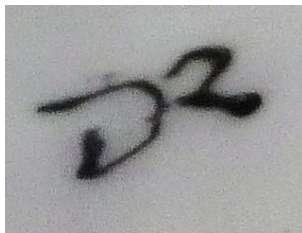
she encouraged Peter to try painting thimbles

Carver's specialty is painting birds – see for yourself his quirky, almost humorous style on his retirement, with interests in professional watercolour painting, furniture restoration and painting enamel boxes amongst many others, with typography and graphic design in his working life, he accepted the challenge

having a kiln, Peter was able to make his own china thimbles – he gilded some of his apices and these are distinctive as the gold only covers the immediate indentations

he experimented with poly clay, which enabled him to try sculpted thimbles

Carver's thimbles are signed PC (but look like DR): you can see for yourself with three examples the thimble names are those of the painter but not lettered within thimble (2013-2014) but thimbles are not dated



Peter also painted on enamel

 <p>Badger</p>	 <p>bird</p>	 <p>Blue tit cutaway to reveal nest inside</p>	 <p>Book at bedtime gold painted apex</p>
 <p>Christmas 2013</p>	 <p>Christmas 2013</p>	 <p>Christmas 2013 'Deck the halls with boughs of holly'</p>	 <p>Christmas 2013</p>



Christmas robin



Cockerel Moon



Corgis – Monte & Ozzie
painted on commission



dolphin



Fox



Hare



Iron Bridge



Leaves and berries



Leaves and berries



London Bridge



Otter/beaver



Owl



Packwood House



Pheasant



Pheasant



poly clay set of six



Rabbits



Robin



Star Dust



Three rabbits



Tower Bridge



William Morris



William Morris



William Morris



William Morris



William Morris



Wren



Nigel Creed - Ken Russell

Creed is a Master Painter and worked at Royal Worcester in 1963

Russell (1934-2010) was Royal Worcester's last Master Gilder

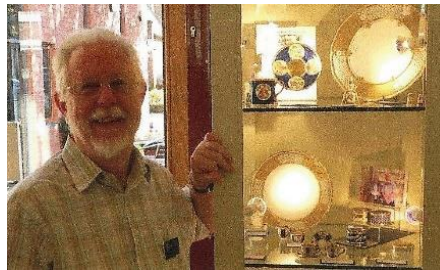
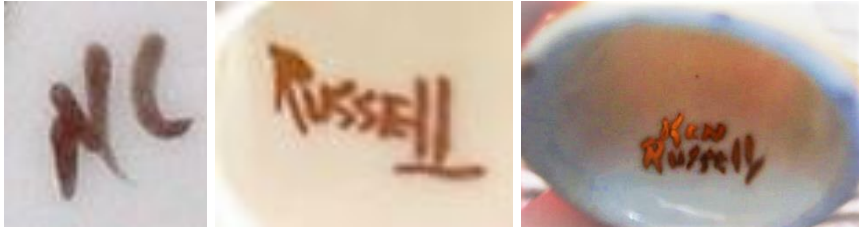
Thimble Society of London commissioned Nigel and Ken to produce handpainted thimbles for sale thru their thimble catalogues (1987-1999)

Nigel signed his thimbles with his initials NC on the outside near the painted part

Ken was the gilder and used 24ct gold. Sometimes the apex is gilded. Russell is signed inside

Ken had retired by 2004. He gilded thimbles for other thimble painters

names used are purely descriptive, not being named by the painters – thimbles are not dated
Royal Worcester collectors will recognise many of these designs as those that came from the factory, given a modern look



Ken Russell 2010



Creed also painted on enamel





Blue tit
limited to 50



butterfly



butterfly
TSL winter 1992



butterfly



Cactus wren
TSL winter 1993



Cherokee rose
TSL spring 1994



Christmas
TSL autumn 1990



Chrysanthemum
Thimble Society of London Autumn 1990



Cockerel
TSL summer 1991



Crocus
TSL summer 1991



Daffodil
limited to 50



freesias?



Gold flower
TSL summer 1999



Gold



Gold



Gold
signed Ken Russell



Gold jewels swags
shell pink ground
TSL autumn 1996



Goldcrest
TSL spring 1993



Goldfinch
L: TSL autumn 1990



Imari
TSL autumn 1989



jewelled
TSL spring 1996



jewelled
in panels



jewelled
TSL summer 1996



jewelled



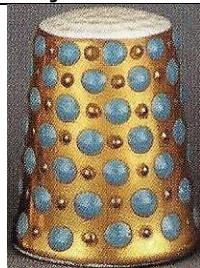
jewelled



jewelled



jewelled



jewelled
TSL winter 1989



jewelled



jewelled



jewelled



Jewels with coral
TSL autumn 1989



Kingfisher
TSL spring 1990



Larch spray
TSL winter 1994



Lattice



Lattice gold
black & white panels
TSL summer 1996



Lattice gold on white
TSL summer 1999



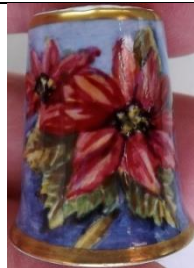
Owl
TSL autumn 1995



Peacock butterfly
limited to 100
TSL summer 1992



Pheasant
TSL autumn 1991



Poinsettia
TSL autumn 1991



primrose



Ptarmigan
TSL winter 1991



purple flower



Robin
limited to 50
TSL winter 1989



Rose
TSL spring 1990



Rose
TSL winter 1991



Ruby jewelled
limited to 100
with TSL mark for Thimble Society of London
TSL summer 1987



Snowdrop
limited to 50
TSL winter 1989



Thistle
limited to 100
TSL summer 1992



Tulip
TSL spring 1992



Turquoise jewelled
limited to 100
TSL summer 1987



Turquoise jewelled
TSL summer 1999



Turquoise jewellery
TSL winter 1989



Turquoise jewels
TSL autumn 1996



Wild lupin
TSL spring 1994



Woodcock
TSL spring 1992



Wren
TSL autumn 1990



yellow flower



yellow flower
TSL spring 1992
rhododendron?



Janice Daughters

Daughters is an artist in Leyburn, Wensleydale North Yorkshire
trained in graphic design, Janice moved from London to set up her studio in 1986, where she was able to
freelance in graphic design

she had developed a love for the countryside, with its flora and fauna
as an added interest, she began to paint on porcelain and china, including thimbles
her signature details are on the inside rim and the date is included (1991-1997)



apples



cottage



Duckling
1991



Duckling
1992



Duckling
1997



Flower garden
1992



Harvest mouse



Poppies



Sheep in Dales
1991



Sheep in Dales

Robert Earwicker

Cornwall

his characters are made of Cornish clay – quirky



Monk friar



nurse



pirate



scarecrow



Teddy bear

Raymond Everill

Everill works out of Lime House Studio in Staffordshire, since he retired from Spode

his trade mark is Raymond Everill & Sons England

you can't mistake his bright pink signature R.Everill

thimbles are not named – some are dated (1988-1989)

the apex is painted with 22ct gold



bird
1989



blackberry
1988



Bullfinch
1988



cherry



Goldfinch



grapes with cherries
1989



grapes



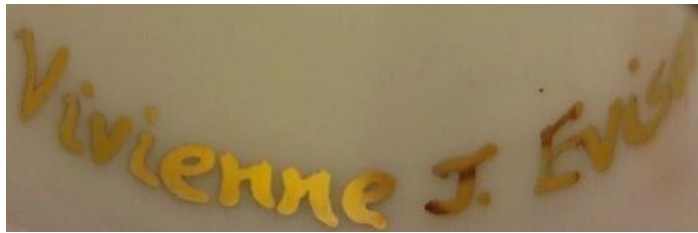
plum



Summer meadow
1989

Vivienne J Evison

Evison runs Lyme Studio in Cheshire with her husband Paul (she was first identified by TTG as Christine)
 her thimbles are of fine bone china finished in 22-24ct gold
 many of her thimbles are painted using precious metals – no two are ever the same
 signed Vivienne J Everill or V.J.E (1992-1997)



After Lowry
TTG June 1996



Earl's golden coronet
TTG September 1995



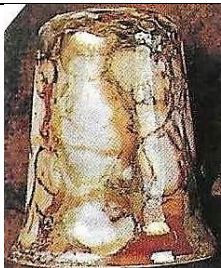
Lightning
TTG December 1996



Peacock feather



Petrol
one of the six thimbles in the precious metals lustre set following
TTG December 1992





Weights
½lb Mushrooms ...
TTG October 1995



Weights
¼lb Tea 125grams (0.275)
TTG October 1995



Weights
1lb Tomatoes ½ kilo (1.1...)
TTG October 1995



Weights
1 oz chillies ...
TTG October 1995



Weights
5lbs Potatoes ...
TTG October 1995



gold painted apex

Helen Halloran

Halloran worked for Royal Worcester, Halcyon Days and Elliot Hall Enamels
her bone china thimbles are one-off pieces
apexes are painted with 24ct gold
these six flower thimbles are from 2022
not signed



Campion



Celandine



Cherry blossom



Primrose



Speedwell



Violets

Keith Hancock

Hancock worked for Sutherland in Stoke-on-Trent and Caverswall, handpainting thimbles for their brand these are not decaled as the bulk of the Sutherland and Caverswall thimbles were they are all signed – and numbered inside when they are limited in number The Thimble Guild commissioned two sets of thimbles from Hancock in 1983 signature is K.Hancock or Keith Hancock. The black signature is signed inside



apples

also available with Swarovski crystal apex



apples

Caverswall



Autumn vale (Four seasons)

limited to 200

TTG September 1983

Autumn – reaping
1983



Blue tit
Swarovski crystal in apex



flower
green Swarovski crystal in apex



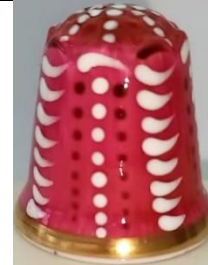
Robin
red Swarovski crystal in apex



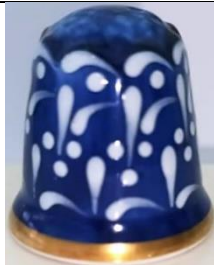
Romany art
green with handpainted enamel
limited to 200
TTG September 1983



Romany art
maroon with handpainted enamel
limited to 200
TTG March 1983



Romany art
pink with handpainted enamel
limited to 200
TTG May 1983



Romany art
blue with handpainted enamel
limited to 200
TTG July 1983



Romany art
TTG summer 1983
b&w photo



Spring vale (Four seasons)
limited to 200
TTG April 1983



Summer vale (Four seasons)
 limited to 200
 TTG July 1983



The red dragon
 more gilding than the TCC Red dragon
 issue
 limited to 1000
 TTG December 1983



Winter vale (Four seasons)
 limited to 200
 TTG February 1983



Meissen style – cobalt ground with two different
 cameo scenes



Meissen style – terracotta ground with two
 different cameo scenes

Agneta Hickley

Rimpton Yeovil

her thimbles all have a scalloped gold-painted rim
Hickley's thimbles have painting all round – except her bird thimbles



Blue butterflies
1988



Country cottage
1988



Goldfinch



Hedgehogs
1988



Kingfisher
1988



Kingfisher
1992



Pink flowers
1988



Red butterflies
1989



Robin
1989

Neil Higgins

Higgins first came to my attention as the handpainter of the Robin Hood set of six character head thimbles, with the brand name of Healacraft, using the initials of NH inside the thimbles his name has also been associated with Sutherland. I speculate that's where he learnt his skills as a handpainter of thimbles?

Neil's signature of N.Higgins is always lettered in brown in his thimbles and may be found lettered on either the inside or outside

thimbles are not dated - earliest date I have found is 1983 (mail order thimble catalogues). He painted thimbles for a short period 1983-1985, Higgins often uses a blue wash as the ground for his painting Higgins undertook commissions thru The Thimble Guild - including a few of pets he subsequently painted for Staffordshire Enamels (1995)





bird



Blue tit



'Bridge House Ambleside'



'Bronte House'
TTG September 1984



building (name illegible)



butterfly



'Carillion Loughborough'



'Chichester'
(Yarn Market)



choristers
with attached pendant loop
limited to 250
TTG November 1983
b&w photo



cottage



'Derby Cathedral'



'Gloucester Old Spot'



King Charles spaniel



Kingfisher



Labrador



Lapwing



'Pershore'
pink wash



'Portland ram'



'Rippon Cathedral'



'Shakespeare's birthplace'



Snowman
with attached pendant loop
limited to 250
TTG November 1983
b&w photo



snowman



Springer spaniel
TTG March 1985



'The Bell Tower'
The Thimble Guild commissioned this thimble of the building where their thimble business was housed
TTG June 1983



'The Orchards'



'Thimble Hall'



'Wells'

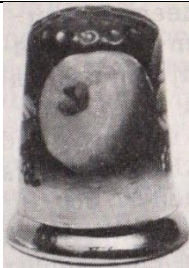


'Womborne Church'

Bruce Higham (BH)

Higham is a ex-Coalport and Staffordshire Enamels (1995) painter
Worcester-based

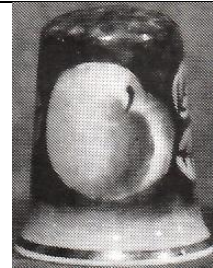
heavily painted gold apices and thick gold painted rims
some seem to have pale lettering on the cream ground



apple
1988
pale green apple on green ground
b&w photo



apple



apple
1989
b&w photo



blossom



cherry



dragonfly



pear

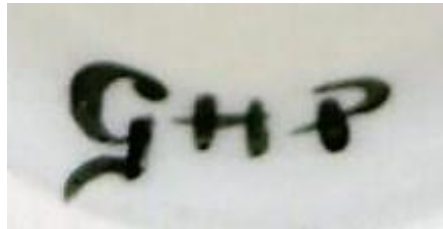
Griselda Hill

Wemyss Ware was founded in 1882 in Fife Scotland. It took its name from a nearby Castle in the 1920s the studio moved to Devon – it closed in 1957

in 1985 Griselda revived the Wemyss Ware® style handpainting to their style at her The Griselda Hill Pottery Ltd® in Kirkcaldy, Fife the most recognisable style has a rim of painted blue scallop - signed inside GHP

<https://wemyssware.co.uk>

thimbles are still produced but currently out of stock. They may be ordered



Hill at L



 beehive	 cats	 cherries
 cockerel	 cockerel hen	 daffodil
 dragonflies	 flower	



flower



flower



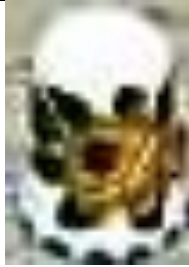
flower



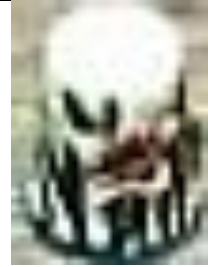
flower



flower



flower



flower



lemon



orange



plums



violet

Milwyn Holloway

Holloway (b.1940) is a Royal Worcester trained artist (1954-1971)
 there he specialised in painting birds
 most of Milwyn's thimbles since then have no inner markings
 some examples have a generic backstamp
 the thimble backstamp used is for Claymore Ceramics
 Milwyn's bird thimbles are always signed MH near the bird
 thimbles are not dated, nor are the birds named



Blue tit

birds' set of 12 thimbles 1987 (TTG)



Bullfinch



Chaffinch



Firecrest



Goldfinch



Great tit



Kingfisher

not in birds' set of 12



Magpie



Nuthatch



Robin



Song thrush



Woodpecker
not in birds' set of 12



Wren



Yellowhammer



not in birds' set of 12



not in birds' set of 12

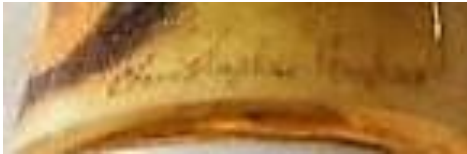


not in birds' set of 12

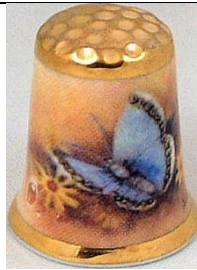
Christopher Hughes

Hughes (born 1948) began his apprenticeship with Royal Worcester in 1960 and branched out on his own in January 1980

he has a studio in Holly Green Worcestershire where he painted thimbles from 1987
 the backstamp inside the thimble is The Christopher Hughes Collection or Christopher Hughes (later)
 his thimbles are signed Christopher Hughes on the outer rim
 thimble apices are completely gilded, and sometimes they join the upper gilt line – he uses a thicker rim of gilding than other British painters. All are painted on fine bone china
 thimbles are painted all round even if the verso is just a pale matching wash
 thimbles are not named, nor dated



<p style="text-align: center;">apple</p>				
<p style="text-align: center;">Barn owl TTG August 2005</p>	<p style="text-align: center;">Bird of prey</p>	<p style="text-align: center;">Blue tit</p>		
<p style="text-align: center;">Butterfly</p>	<p style="text-align: center;">Butterfly</p>	<p style="text-align: center;">Butterfly</p>		
<p style="text-align: center;">Butterfly</p>	<p style="text-align: center;">Butterfly with and without gold apex</p>		<p style="text-align: center;">Church</p>	



Common Blue butterfly
with and without gold apex



Chrysanthemum



Daffodil



Finch



Fuchsia



Harebell



Grouse
R: no gold apex with birds positioned differently
TTG April 2003



Highland cattle
with and without gold apex
L: TTG April 2003



Highland stag
with and without gold apex



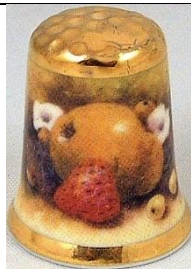
Hollyhock



Kingfisher



Little owl
September 2005



Pear with strawberry



Red plum



Peregrine falcon
TTG September 2005



Pheasants
with and without gold apex
TTG April 2003



Robin



Rose



Sheep
with and without gold apex



Snowy owl
with and without gold apex



Sparrow



White plum



Wren

Julie Menzies

Menzies grew up the Biggar area in the lowlands of Scotland
 she was never formally trained in art tho painting was a passionate hobby
 Julie worked in the despatch section of The Thimble Guild (TTG) in Biggar until the owner, Arthur Bell,
 discovered her artistic abilities
 in 1993 she began to handpaint thimbles commissioned and personalised by thimble collectors thru TTG –
 painting their pets, homes, gardens etc
 she specialises in portraits and for five years Menzies was the TGG’s chief thimble artist
 she became their chief designer of art in 1998-2005, which required her to create thimble designs
 these were translated into lithographs or transfers/decals
 tho her thimbles seem to be handpainted, all Menzies thimbles after 1998 are decaled thimbles
 handpainted portraits fill the entire front of thimble – her decal thimble portraits are more cameo sized
 her handpainted thimbles bear the signatures J.M., Julie. M. or Julie Menzies on fine bone china
 with 22ct gold rims
 Menzies can handpaint three thimbles a day – no wonder they were offered in limited editions
 some thimbles will have the backstamp The Thimble Guild
 Julie was also a designer for Sutherland China

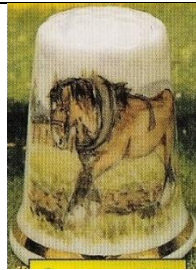


Menzies January 1991 and 1999

 <p>90th anniversary 1921–2011 lettered in gold Royal British Legion limited to 250 - ed lettered om verso TTG November 2011</p>	 <p>Alexander Graham Bell limited to 100 TTG March 1997</p>	 <p>Best wishes New Year 2005 TTG December 1994</p>
 <p>Billy Wright limited to 200 TTG October 1994</p>	 <p>Burt Lancaster TTG December 1994</p>	 <p>Caernarvon Castle favourite ship could be personalised TTG February 1998</p>



children's portraits
portraits could be personalised
TTG October 1993



Clydesdale
limited to 250
TTG March 1997



Colin Macrae (rally driver)
limited to 250
TTG January 1996



Cross
limited to 200
TTG March 1994



Donald Pleasance
limited to 100
TTG March 1995



Doris Speed
TTG December 1994



dream home
your home could be personalised
TTG August 1996



E & S (Edward and Sophie)
19.6.99
there is also a decal version



Fred Perry
limited to 100
TTG March 1995



garden
your garden could be personalised
TTG April 1994



'Hale Bopp 1997'



'Hale Bopp 1997'

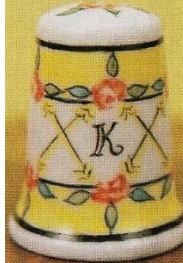
L: first edition which has more detail - limited to 250
 R: city scene - lower: country scene
 two unlimited editions with less detail
 TTG May 1997



Henry VIII
 limited to 75
 TTG February 1997



Jose Carreras
 commissioned by the singer who is a thimble collector
 TTG May 1994

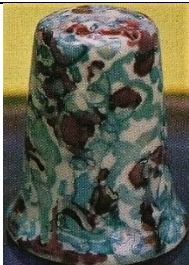


initials

Menzies follows 18th century French designs
 your initials could be commissioned
 limited to 175
 TTG July 1993



Lustreware



Lustreware
 TTG March 1997



Lustreware
 TTG September 1999



Lustreware
 TTG September 1999



Lustreware
December 1999



Meadow flowers
October 1996
limited to 100



Neil Armstrong
September 1994
limited to 150



Montserrat Volcano 1997



North Sea oil
Swarovski crystal in apex
limited to 250
TTG December 1994



Peace and goodwill
limited to 125
TTG December 1995



Peace in Northern Ireland
limited to 150
TTG March 1995



pet
your favourite pet could be
personalised



Queen Elizabeth II 70th birthday
19.4.96
TTG April 1996



Queen Elizabeth II 85th birthday
19.4.2011
limited to 85
TTG April 2011



Queen Elizabeth the Queen
Mother 95th birthday
Swarovski crystal in apex
limited to 350
TTG August 1995



Rose
TTG April 1997



Roy Castle
limited to 250
TTG October 1994



Sam
symbol of the koalas injured in Victorian 2009 bushfires



Scenes of Jubilation 50 years
limited to 500
TTG April 1995



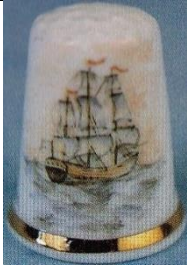
Snowflake
spot of gold paint in each flake
limited to 150
TTG January 1997



Soufreire Hills Volcano
Montserrat
TTG October 1997



Teddy bear
baby's name can be personalised
TTG December 2009



The Golden Hind
limited to 450
TTG March 1996



The Longest Day 50 years
limited to 250
TTG May 1994



The night before Christmas
TTG November 1996



To a mouse
(after Robbie Burns)
limited to 149
TTG January 1994



Toy train
baby's name can be personalised
TTG December 2009



UFO
limited to 450
TTG May 1998



Viva Espana!
limited to 75
TTG July 1994



West Highland Terrier
favourite pet can be personalised
TTG March 1998



Xmas 1999
pontilist style
TTG November 1999



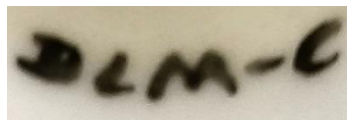
William & Kate 29th April 2011
golden lovebirds
TTG April 2011

Dorothy Mortimer-Coy (DML-C)

Flowercraft
Sponden Derby

former Royal Crown Derby artist

her thimbles are signed inside – further information is on a sticker on base of thimble box



Blue poppy



Buttercup



Daffodil



Forget-me-not



Pink rose



Scabiosa



pink



Wild rose



Yellow rose



Peter Platt

Platt (born 1935) was commissioned by The Thimble Society of London to paint thimbles in 1990s for sale thru their catalogues

he is Royal Worcester trained (from 1951)

Peter's thimbles, once he left RW, are uniquely his own: plenty of gilding and the subjects are set in an ornate cameo

signature is P Platt which can usually be found in the lowest part of the cameo



EIR 1952-1992
commissioned by TSL



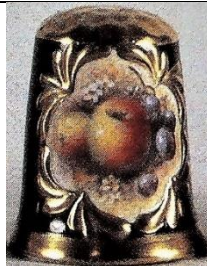
Flowers
gilded by Russell



flowers



Fruit - apples
TSL summer 1991



Fruit - apples



Fruit - apples
TSL summer 1992



Kingfisher
gilded by Russell

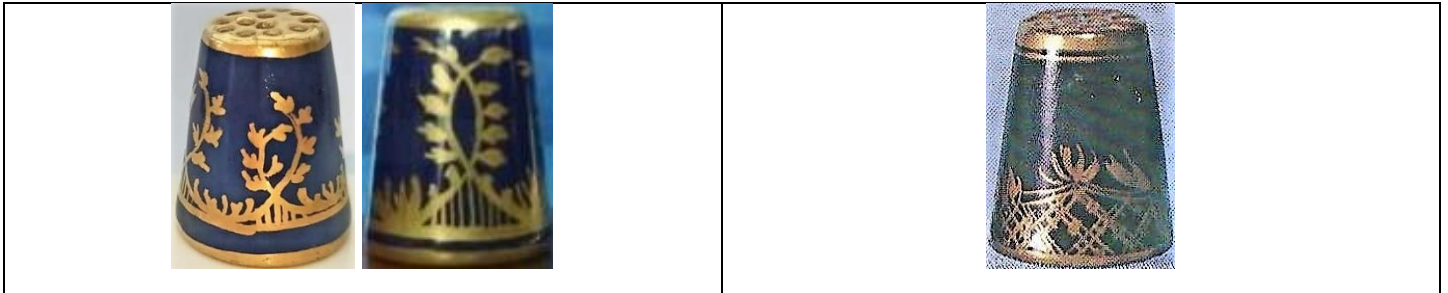
Ryoko Ottignon

Ryoko's studio - Ottignons of Norfolk – is in Starston where she is the hand decorator and ceramist
 Ottignon's thimbles are based on copies of Georgian designs from 1780s – designs found on cups and saucers of Lowestoft (1757-1802) and New Hall (1781-1835) porcelain factories
 maker's mark in the form of a sandglass ii burnished gold is painted on the inside
 (it may look like the Roman numeral for ten when the dot isn't clear)

her thimbles require five firings to fix the colours and glaze on the cream porcelain

thimbles are presented in thimble boxes handturned in mahogany and waxed to give an antique patina
 accompanied by a signed, dated and numbered certificate – the list of what else Ottignons retails is listed
 on the verso of each certificat

the glaze has crazed with age on her white thimbles



pattern recurs all round



R: certificate 1978
 see also: white version





R: certificate October 1978



Ladybird

R: certificate July 1978



Rachel Pugh

Pugh handpainted bone china thimbles for The Thimble Guild from September 2000 she was also a designer at TTG from 2000-2005 where her art was translated into decals Pugh was born in Cumbria. She lives in Cyprus where she still designed thimbles for TTG Rachel's signature R.Pugh is on the inside of the thimble, often using gold paint if the thimble is named, it is lettered inside



Ambergate daffodil
gold apex
TTG April 2002



Armistice poppy
gold apex
TTG November 2001



Armistice
TTG November 2000





Autumn
TTG October 2000



Christmas rose
TTG December 2000



Cyclamen
gold apex
TTG October 2002



Daisy field
TTG June 2001



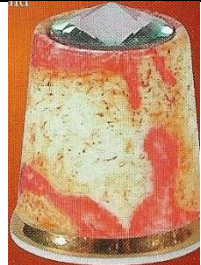
Deck chair
raised paint
TTG August 2004



Dove of peace
textured paint
TTG June 2003



Early snowdrop
raised paint
TTG January 2001



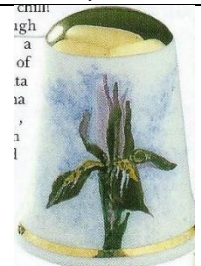
Exploring Mars
Swarovski crystal in apex
TTG April 2004



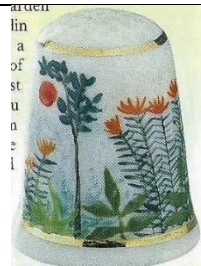
Frosty snowman
raised matt glaze
TTG December 2004



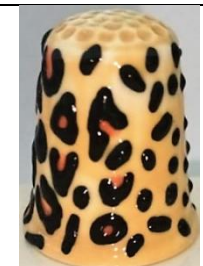
Giraffe
raised patterning
TTG October 2003



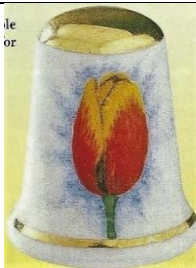
Iris recticulata
gold apex
TTG February 2002



Jungle Flowers
after Henri Roisseau
TTG August 2001



Leopard
raised spots
TTG December 2003



Keiserskroon tulip
gold apex
TTG May 2002



Lily
gold apex
TTG September 2002



Moorcroft style
raised design
TTG May 2004



'Peace on earth'
suede glaze to create sandy
surface
TTG November 2003



Peacock feathers
TTG April 2004



Poinsettia
gold apex
TTG December 2002



Poppies at Argenteuil
limited to 50
TTG June 2004



Purple pansy
gold apex
TTG March 2002



Rose
gold apex
TTG June 2002



Snowdrop
gold apex
TTG January 2002



Springtime
TTG April 2001



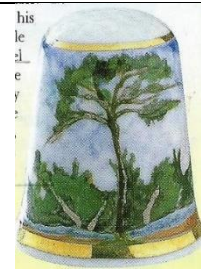
Summertime
TTG September 2000



Sunflower
gold apex
TTG August 2002



Sweetpea
gold apex
TTG July 2002



The Great Pine after Cezanne
TTG October 2001



The Lily Pond
after Monet
date next to signature
TTG July 2001



'Thimble' in Braille
in raised writing
TTG June 2003



Tiger
raised painted stripes
TTG September 2003



Tropical fish
TTG September 2004



Valentine
TTG January 2004



Van Gogh
TTG August 2001



Winter snowflake
white glaze
TTG January 2003



Winter wonderland
raised matt glaze
TTG December 2003



Wintertime
TTG February 2001



Yellow freesia
gold apex
TTG November 2002



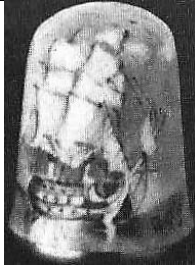
Zebra
raised painted stripes
TTG November 2003

Roger Shufflebotham (R.A.S.)

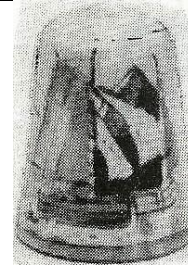
Shufflebotham was an early painter for Caverswall
he is known as a marine artist
his thimbles are signed R.A.S.



fruit



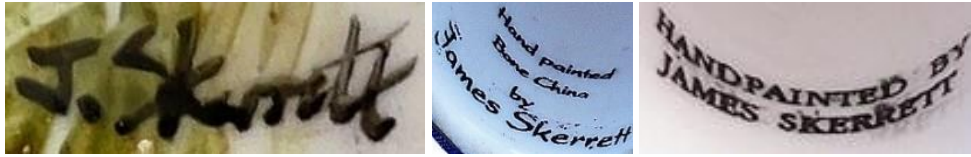
H.M.S Victory
limited to 40
TTG June 1983
b&w photo



Thames barges
limited to 40
TTG April 1983
b&w photo

James Skerrett (JS)

Skerrett trained at Royal Worcester
 in 2012 he was the artist-in-residence at the Worcester Porcelain Museum
 James's J Skerrett signature is found on the outside. Earlier thimbles signed JS
 there are several varieties of decal marks inside Skerrett thimbles



Autumn fruits
 TTG September 2012



Christmas roses
 with hedgerow berries
 TTG December 2012



Remembrance poppy
 with cornflowers and marguerites
 TTG October 2012



bird



fruit
signed 'JS'



hedgehog



roses

Ann Taylor

Scotland
signed A Taylor



Brig o' Turk
limited to 99
TTG July 1992



Chinese male character
limited to 100
TTG April 1992



Chinese man serenading woman
limited to 100
TTG April 1992



Choirboy
limited to 245
TTG November 1992



Dragon
limited to 100
TTG April 1992



Sewing
limited to 150
TTG July 1993

Bryn Weightman

Gwahaniaeth Crafts, Wales

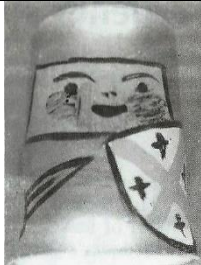
Weightman paints his bone china thimbles mainly as figures – some of his thimbles have caps or hats of polymer clay – they are outside this study signed Bryn



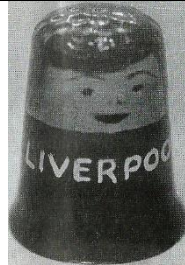
cottage
TTG June 1986



Friar Tuck
TTG April 1986



Crusader
TTG February 1987
b&w photo



Liverpool
Bryn would add club of your choice
TTG June 1987
b&w photo



gypsy



Manchester City



Matrioshke doll
TTG February 1986



sailor



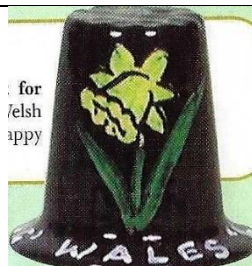
santa
TTG November 1986



snowman



Welsh guard



'Land of song Wales
TTG February 2003

Sheila Whitcombe

Whitcombe (nee Watson) began painting portraits at 16
she became a modeller for Royal Worcester, so never painted thimbles for them

Sheila paints under the name of Dunheved from Cornwall
signed S Whitcombe on the front of bone china thimbles – sometimes inside, in lower case

Dunheved thimbles are unusually large measuring 30-35cm in height

this gives the artist a larger surface to paint

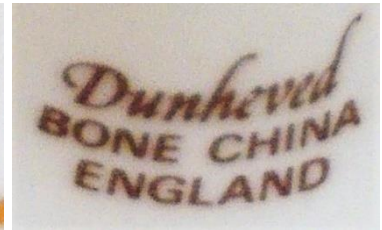
she needed specialised knowledge of ceramic oxides to paint her historical figures with their jewel colours

the name is lettered on the outside verso

Sheila's painting may creep onto the apex to complete the picture

her artwork is quite pale – the colours here are stronger for clearer pictures

last thimble seen 2005 mail order catalogues



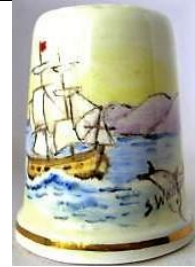
 <p style="text-align: center;">Armada 400th anniversary 1588-1988</p>	 <p style="text-align: center;">Charles I TTG October 1994</p>	 <p style="text-align: center;">Cornflowers with Spring peas TTG April 2001</p>	 <p style="text-align: center;">Cornish piskey limited to 84</p>
 <p style="text-align: center;">Devon</p>	 <p style="text-align: center;">First Fleet departure from England 1787 set of nine painted for Australia's bicentenary 1988</p>	 <p style="text-align: center;">First Fleet departure from England 1787</p>	



First Fleet
departure from England 1787



First Fleet
departure from England 1787



First Fleet
arrival in Tenerife 1787



First Fleet
arrival in Rio de Janeiro 1787



First Fleet
arrival in Cape of Good Hope 1787



First Fleet
arrival in Australia 1788



First Fleet
arrival in Australia 1788



First Fleet
arrival in Australia 1788



Frog
March 1993



Fruit - berries
TTG May 2005



Goose



Goose



Harebell
with Venus Looking Glass
TTG August 2001



Henry VIII
TTG February 1992



Ladybird
with dog rose



Lorna Doone farm



Padstow



Pansy flower fairy



Polperro



Poppy flower fairy



Queen Elizabeth I
limited to 90
TTG June 1996



Queen Elizabeth II 1993
TTG May 1993



Queen Mother



Queen Mother



Queen of the Meadow flower fairy



Queen Victoria
limited to 350
TTG November 1992



Rabbit



Rabbit



Reindeer
Christmas 1988



Richard III
TTG March 1992



Roses



Roses & forget-me-nots
July 2002



Sir Francis Drake



Strawberry flower fairy



Snowdrop flower fairy



The Cobb Lyme Regis



Thrift flower fairy



Unicorn



Weston Super Mare

Derek Wilson

Wilson is a Royal Worcester trained artist, 1930-1954

he paints under the name of Dunheved from Cornwall, in his studio near Launceston signed D Wilson, often cleverly camouflaged, on the outside of the bone china thimble Dunheved thimbles are unusually large measuring 30-35cm in height ('generously sized')

this gives the artist a larger surface to paint

being a birdwatcher and a wildlife artist, Derek's thimbles are painted around British birds, wildflowers and animals, and some of the Cornish countryside also feature. The latter may have been sold all over Cornwall?

bird name is lettered on inside rim – places on the outside verso

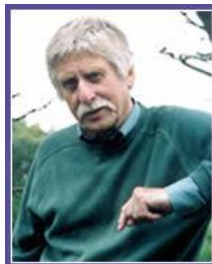
when the number painted is limited, the number is printed on the inside

Derek works on two sizes of Dunheved thimbles – the smaller size thimblette is used in the catalogues. These were used more frequently towards the end of his career

last thimble seen thru TTG was July 2011

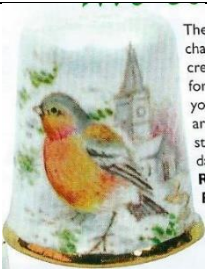


green Dunheved mark is from late 1970s when smaller sized thimbles were used - not signed



 <p>Anne Hathaway's cottage limited to 250 TTG May 1992</p>	 <p>Avocet TTG June 2005</p>	 <p>Badger</p>	 <p>Badger and robin limited to 195 TTG January 1998</p>
--	---	--	---

			
Badgers TTG July 1998	Badgers TTG June 2009	Barn owl TTG June 2004	Barred owl TTG July 2004
			
Bearded tit TTG May 2005	Black grouse TTG October 2005	Black grouse TTG January 2007	Black redstart SAVE £4
			
Black tailed godwit	Blackbird TTG December 2002	Blackbirds TTG January 2007	Blackbirds
			
Blackcap TTG February 2006	Blue tit TTG December 2002	Blue tit TTG June 2010	Bluethroats TTG October 2006
			
Brambling TTG September 2003	Bramblings May 2006	Budgerigars TTG August 2004	Bullfinch limited to 150 TTG June 1994
			
Bullfinch TTG June 1998 limited to 200	Bullfinch TTG July 2004	bunny	Chaffinch TTG September 1999 limited to 125



Chaffinch
TTG May 2005



Chaffinch



Chaffinches
TTG July 2007



Cheddar Gorge



Chiffchaff
TTG January 2011



Choughs
TTG September 2005



Christmas rose
Christmas 1990



Church with sheep



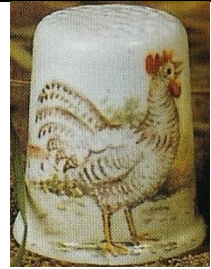
Cockerel and hen
TTG June 2004



Collared (sic) doves
TTG August 2007



Comma butterfly
TTG February 2011



Corky the Cock
TTG October 1993
limited to 200



Cornish cottage



Cornish Tin Mine -
Levant
1983



Crested tit
TTG March 2005



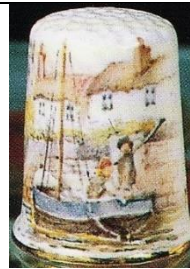
Curlew
TTG June 2007



Dabchicks
TTG August 2007



Dartford warbler
TTG August 2000
limited to 200



Devon estuary -
Polperro
TTG April 1993
limited to 150



Dipper
TTG August 2006



Dormouse
March 2004



Ducks



Eagle owl
September 2002



English cottage
June 1991



Field fare



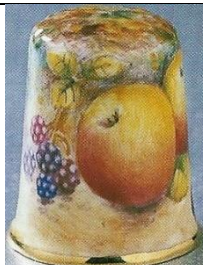
Firecrest
September 2003



Fox and robin
February 1999
limited to 150



Frenchman's Creek



Fruit
March 2004



Geese
November 1997
limited to 150



Gloucester Old Spot pig
April 1995



Goldcrests



Golden eagle
October 2008



Golden Hind



Golden oriole
November 2004



Golden plover
March 2006



Goldfinch
February 2005



Goldfinch
March 2009



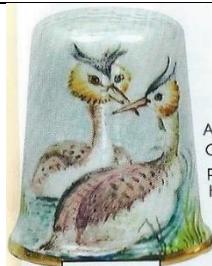
Goldfinch



Goosanders
January 2008



Goose



Great crested grebe
June 2005



Great spotted woodpecker
December 1995
limited to 100



Great tit
August 2001



Green woodpecker



Greenfinch
April 2004



Greenland falcon
January 2007



Grey seals
April 1998



Grey thrush
July 2002



Grey Wagtail
April 2006



Guy Fawkes
November 1995



Hare
July 2011



Hare and robin
Christmas 1996



Harvest mouse



Hedgehog
April 1993
limited to 150



Hedgehog
November 1996



Hedgehog and robin



Heron
June 2005



Highland cattle
February 1996
limited to 150



Hoopoe
April 2005



House
Christmas 1998



House martin
April 2007



House-sparrows
May 2008



Jack Russell
April 1994



Jamaica Inn
April 2002



Jay
January 2005



Kestrels
November 2007



Kingfisher



Kingfisher
June 1993
limited to 200



Kittiwakes nesting
July 2005



Knot
TTG June 2008



Lapwing



Lesser spotted
woodpecker



Linnets



Long eared owl



Long tailed tit
February 2009



Looe



Lovebirds
June 2006



Mallard



Mandarin ducks



Meadow pipit
September 2010



Meerkats
August 2010



Mevagissey



Mistle thrush
with mistletoe
berries

 <p>the on is ife re su s e</p> <p>Mole January 2010</p>	  <p>Mousehole September 1992 limited to 250</p>	   <p>Mousehole August 1996 limited to 250</p>	
 <p>Th we sp a M h p t</p> <p>Mute swan August 2006</p>	 <p>Newlyn May 1995 limited to 150</p>	 <p>N P i r t l</p> <p>Nightingale April 2006</p>	 <p>Nuthatch August 2002</p>
 <p>Nuthatch September 2004</p>	 <p>Old Spot</p>	 <p>and on r 01</p> <p>Orchard blackbird July 2010</p>	 <p>Osprey January 2006</p>
 <p>Otter May 1993 limited to 125</p>	 <p>Otter February 2003</p>	 <p>8 084</p> <p>Otter November 2009</p>	 <p>Over the Bar Bideford September 1993</p>
 <p>Oystercatcher June 2001</p>	 <p>Partridge & rabbit Christmas 2006</p>	 <p>is r n</p> <p>Partridges Christmas 2006</p>	 <p>Peacock</p>

 <p>Penguin Christmas 1991</p>	 <p>Peregrine falcon October 2004</p>	 <p>Pheasant December 2001</p>	 <p>Pheasant and partridges Christmas 1989</p>
 <p>Pheasant and partridges December 2005</p>	 <p>Pheasants December 1992 limited to 195</p>	 <p>Pheasants December 2007</p>	 <p>Pied flycatchers October 2006</p>
 <p>Pink cockatoo July 2003</p>	 <p>Polar bears Christmas 1992</p>	 <p>Polperro</p>	 <p>Ptarmigan October 2005</p>
 <p>Puffin February 1994</p>	 <p>Puffin October 2003</p>	 <p>Quail October 2006</p>	 <p>R.M.S Titanic sank 2.20am April 15 1912</p>
 <p>Red fox October 1994</p>	 <p>Red grouse August 1993 limited to 175</p>	 <p>Red grouse July 2006</p>	 <p>Red squirrel July 2009</p>
 <p>Redstart</p>	 <p>Redwing February 1994</p>	 <p>Redwings February 1994</p>	 <p>Redwings February 2008</p>



Reed buntings
April 2008



Ringed plovers
January 2008



Robin
1986



Robin
Christmas 1987



Robin
November 1995



Robin
November 1997



Robin
November 2000



Robin
January 2003



Robin
January 2005



Robin
November 2005



Robin
November 2006



Robin
Christmas 2007



Robin
December 2007



Robin
with house



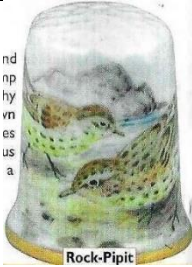
Robin
with blue tit



Robins
November 2005



Rose-coloured starlings
April 2007



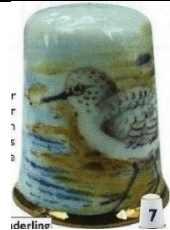
Rock-pipit
September 2006



Ruby throated
hummingbird
May 2003



Ruff
September 2007



Sanderling
June 2008



Sand-martins
May 2008



Scops owl
June 2003



Sheep
September 1996
limited to 145

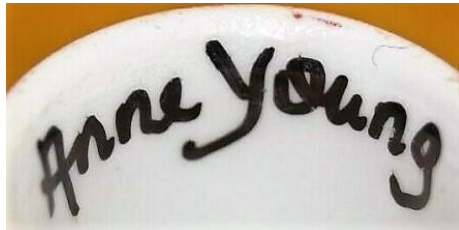
 <p>Shepherds Christmas 2000</p>	 <p>Shore-lark September 2007</p>	 <p>Sidmouth</p>	 <p>Skylark May 2007</p>
 <p>Snipe April 2008</p>	 <p>Snow bunting January 2001</p>	 <p>Snow goose November 2003</p>	 <p>Snowman</p>
 <p>Snowman Christmas 1990</p>	 <p>Snowman Christmas 1997</p>	 <p>Snowman November 2000</p>	 <p>Snowman tobogganing November 1994</p>
 <p>Snowy owl November 2003</p>	 <p>Snowy owl</p>	 <p>Somerset cottage</p>	 <p>Song thrush May 1994</p>
 <p>Song thrush Christmas 2006</p>	 <p>Sparrowhawk</p>	 <p>Spotted crake October 2007</p>	 <p>Squirrel November 2001</p>
 <p>St Michael's Mount February 1993</p>	 <p>Stonechat</p>	 <p>Suffolk sheep March 1995 limited to 150</p>	 <p>Swallows March 2004</p>

 <p>Swallows</p>	 <p>Tawny owl December 2008</p>	 <p>Tawny owl March 2002</p>	 <p>Teal January 1997 limited to 150</p>	
 <p>Teddy bear</p>	 <p>Thatched cottage August 2009</p>	 <p>Thomas Hardy's cottage</p>	 <p>Thrush January 2004</p>	
 <p>Tintagel Castle August 1996 limited to 250</p>			 <p>Tomago House N.S.W.</p>	 <p>Tree creeper September 2004</p>
 <p>Tree creeper October 2007</p>	 <p>Turkey Christmas 1994</p>	 <p>Turnstone May 2007</p>	 <p>Turtle dove September 2006</p>	
 <p>Twite January 2009</p>	 <p>Valley of Rocks Lynton limited to 83</p>		 <p>Venice</p>	 <p>Witch October 1995 limited to 150</p>

 <p>Water-rail June 2007</p>	 <p>Water shrew</p>	 <p>Waxwing April 2003</p>	 <p>Wells Cathedral</p>
 <p>Wheatear February 2006</p>	 <p>Whinchat February 2007</p>	 <p>White stork June 2006</p>	 <p>Whitethroat March 2005</p>
 <p>Willow tits November 2007</p>	 <p>Willow warbler</p>	 <p>Windsor Castle December 1992 limited to 350</p>	 <p>Winter December 1996</p>
 <p>Winter partridges October 2002</p>	 <p>Woodcock August 2005</p>	 <p>Wood-lark December 2005</p>	 <p>Woodlark March 2007</p>
 <p>Wren July 1997</p>	 <p>Wren January 2003</p>	 <p>Wren May 2005/February 2008</p>	 <p>Wren March 2007</p>
 <p>Yellow wagtail September 2008</p>	 <p>Yellow hammer April 2003</p>	 <p>Yellowhammer February 2005</p>	

Anne Young

Young's barge or canal ware painting is uniquely British
she certainly mastered this folk art form in the miniature size required to paint on thimbles
most of her thimbles are signed and some are dated – they range from 1980s-1990s
Anne's thimbles are signed on the inner rim Anne Young – lettered upside down
dates when included are also inside
there are traditional background colours and the lovely gloss adds to their appeal
it's the trim around the rim where one sees the details
the main design is replicated on the verso
Young also paints wooden thimbles



1998





green
distinctive yellow rim



red
1998



red



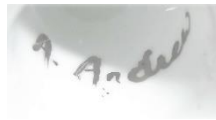
red



white

Other painters - named

A Andrew

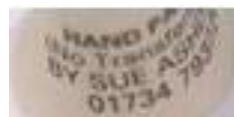
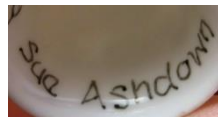


Poinsettia

Sue Ashdown

Reading

'handpainted - no transfers or decals used'



'Welsh Thimblers
September 1990'
Daffodils with their thimble emblem on verso
limited to 30





daffodils

Lorraine Bates

born 1964

graduate of Bath Academy of Art 1986

daughter of Gill and David Bates of Woodsetton Peeps

set up her own pottery, Woodsetton Arts Pottery, alongside that of the family business

handpaints some of their enamelled brass thimbles



'for Mum'

TTG February 1986

b&w photo

M Bates

painter for Caverswall



blackberries
circa 1977

Monica Bowron (MB)



Highland landscape
TTG October 1985
limited to 150
b&w photo

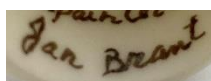


Stonehenge
TTG May 1986



Wiltshire Downs
TTG September 1986
limited to 150
R: original catalogue entry

Jan Brant



Blue tit

D J Coggan



'The Queens 60th birthday 21 April 1986'
commissioned by TSL
limited to 800



'A S (Andrew and Sarah) married 23 July 1986'
commissioned by TSL
bee is Sarah's emblem
limited edition



'Ruby wedding of H.M. Queen Elizabeth II & Philip, Duke of Edinburgh 20 Nov.1947-1987'
gold apex

Harry Colclough

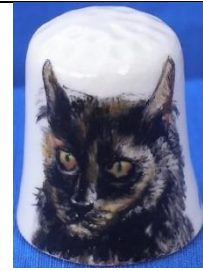
worked for Royal Grafton for 30 years



cat



Horse and cart
TTG June 1985
b&w photo



'Tuppence'



'The Orchards? (1950)'
backstamp is Healcraft Fine Bone China

Anne Dalton

Ottervale China Company Devon
Anne also painted character head thimbles



Deirdre
Guernsey



Goldfinch



Linnets

V Fawcett
Ilkley



flowers

D Fuller



Wren

Shelly Gardner



Unicorn

Irene Glendining



Wren

Patsie Griggs



chick



Flowers

Ann Hickey

Canal Boat Thimbles
Penwortham Preston Lancashire



Barge ware (canal boat painting)

J Humphries



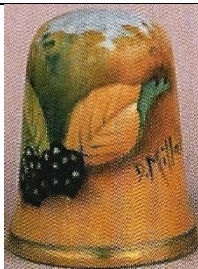
Leslie Lamb
Ross-shire Scotland



Goldfinch
TTG July 1984



D Miller (DM)
painter for Caverswall
some thimbles have the full signature, others the initials



fruit c.1985



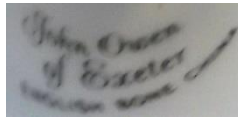
dragon

Clare Montgomery (CM)
Ballymena Northern Ireland



Wildflowers of Ireland

John Owen of Exeter



Devon W.I.
1920-1995
violets

Penny

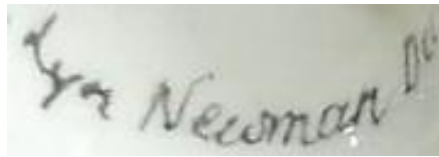


Rachel Munday



Kingfisher
TTG September 1999
limited to 245

Lyn Newman



Dorothy Newsome



'DTS 2nd International Conference 7.8.9 June 1991'
Dorset Thimble Society

their 3rd Conference thimble was made by Birchcroft probably with the design by Newsome limited edition



'DTS 1985 - 2005'
limited edition



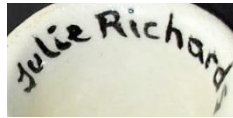
A F Pinxt



'Embroiderers' Guild 1906-1981'
limited to 100

Julie Richards

Wales



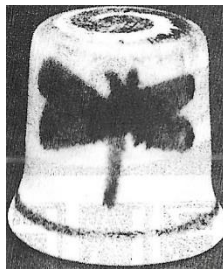
lettered upside-down



'Llanddewi Brefi'

Susan Senior

Scottish potter



white porcelain cobalt blue butterfly

TTG June 1994

b&w photo

Sylvia Smith



Latticed flowers – mauve

TTG November 1990



Latticed flowers – turquoise

TTG November 1990

Sheila Southwell



Rose

on blue lustreware

TTG August 1983

limited to 50

Steffie



watchtower

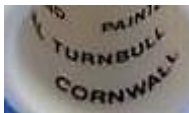
E Trillsam



chickens

Val Turnbull

Cornwall



fuchsias

H Wall

Locke & Co in Worcester is a forerunner of Royal Worcester – 1900s



Pheasant

D Wallace (DW)

Claytondale China Stoke-on-Trent



Fruit

Susan Ware



Snowman
1986

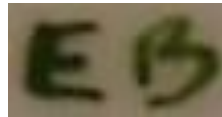
Other painters – initials only
(arranged in order by last initial)

NA



pottery

EB



'C'

EMB



signed on outside



blue tit
inscribed 'Anne'

H.S.B.



harebells - heath

D.C.



agateware
1997

EH



signed on outside



poppies

NJ



J.K.

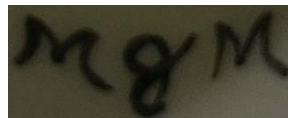


signed on outside



harebells

M&M

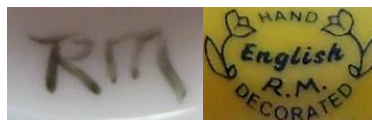


signed on inside



swans

RM



Blue tits



Kingfisher
'25'



Mouse



RMCK



Harebells



Snowdrops

RSM



violets
1984

JMN



signed on outside



pansy



primrose



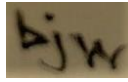
rose



RS



bjw



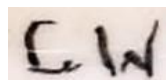
hedgehogs

CTW



ladybirds

C W



'Seacombe Pottery 1852-1864'

P.W.



References

- Bleasdales *catalogues*
Charlotte Goldberg *David Roy Bowkett former Royal Worcester artist 1948-1962. TCI Bulletin* summer 2014
Susan Gowan *Handpainted thimbles (Peter Carver) NTSCA Newsletter* February 2014
Friedy Kamp *Vingerhoed Nieuws catalogues* 1993-2008
Coilin Millett *The wonder of Worcester: an illustrated history*. 2020
Museum of Royal Worcester
Thimble Collectors Guild (TCG)/The Thimble Guild (TTG) *catalogues* 1983-2005
Thimble Society of London (TSL) *catalogues* 1981-2013
Bertus van den Dikkenberg *Het Vingerhoedje*. 1998

Contributors

Wendi Aguiar | Sally Bailey | Joanna Blackie-Sew Many Bits | Yolanta Bogdziewicz | Pawel Brzyski | Joy Carlsen Earles
Charlotte Goldberg | Linda Heggs | Lynda Herrod | Doreen Lilley-Pricklepin | Simon Lloyd-Edwards
Carolyn Meacham-Elegant Arts | Amanda Nevin | Maurice O'Reilly | Diane Poesk | Mabel Rogers | Jean Rose
Linda Samaripa | Mer Saucedo | Wolf-Dieter Scholz | Jean Taylor | Bertus van Dikkenberg | Michael Wheeler
Krystyna Zagajewska

This listing of Modern British handpainted china thimbles does not purport to be complete or accurate in all aspects.
Rather it invites comment and contribution to add to our knowledge. My thanks to the contributors.

EMAIL thimbleselect@bigpond.com TO SHARE YOUR KNOWLEDGE

© **Sue Gowan**
February 2022