

Modern British sterling silver thimble makers

1960 – 2022

I - Z

Charles Iles & Gomms (CI&G)

Birmingham

the Company closed in 1990 – they were sold to Thomas Johnson
neither Charles Iles or Iles & Gomms made sterling silver thimbles 1850-1990



1995
Birmingham
made by: **JS&S**



1995
Birmingham
two maker's marks
MADE IN ENGLAND
made by: **JS&S**

Kenneth James Jack (KJJ)

Birmingham



2000
Birmingham
millennial mark on apex



2006
Birmingham
rope-like rim

K M Silver (KMS)

Birmingham

silverware manufacturing company based in the Midlands, which was founded in 1977



1984
Birmingham



1997
Birmingham
'JUST A THIMBLEFUL'

M Kamin (MK)

Birmingham



1982 1983 1984

Birmingham

similar design to **B&Co – nt – DP – E&Co**



1982 1984 1985 1986 1987 1988 1993

Birmingham

three bands of graduating rings



1984 1985 1986

Birmingham



1987

Birmingham



1992

Birmingham

maker's marks forms part of design
925 & import mark



1995

Birmingham

925 and import mark



1996

Birmingham



2000

Birmingham

925



2000

Birmingham

925



Birmingham

925 + import mark

hallmarks are part of the design



Birmingham
925 + import mark
 hallmarks are part of the design
 faceted rim

Malcolm Knight (MK)

Birmingham



1982
Birmingham
 floral sprig



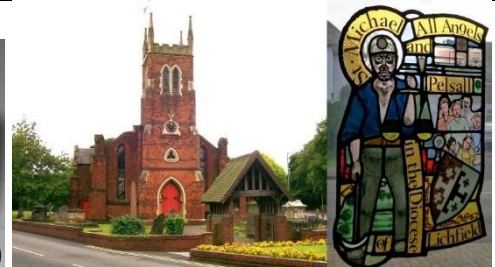
1984
Birmingham
 GOOD LUCK



1990
Birmingham
925 and import mark



1993
Birmingham
925
Pelsall Millennium Tapestry 1994



St Michael and All Angels Church, Pelsall & The Pelsall Millennium Tapestry, 1994

Peter Ladell (PL)

Luton

Ladlaw Crafts

Peter took commissions in both silver and gold



2000

Sheffield

925

commemorating Her Majesty Queen Elizabeth the Queen Mother 100 years 1900-2000

commissioned by Thimble Society of London

Peter Robert Larratt (PRL)



1979

London

Robert Legg (RL)

Legg is the engraver of these thimbles – see also **CB** and **M^N&W^B**

Later known as Robert Campbell Legg

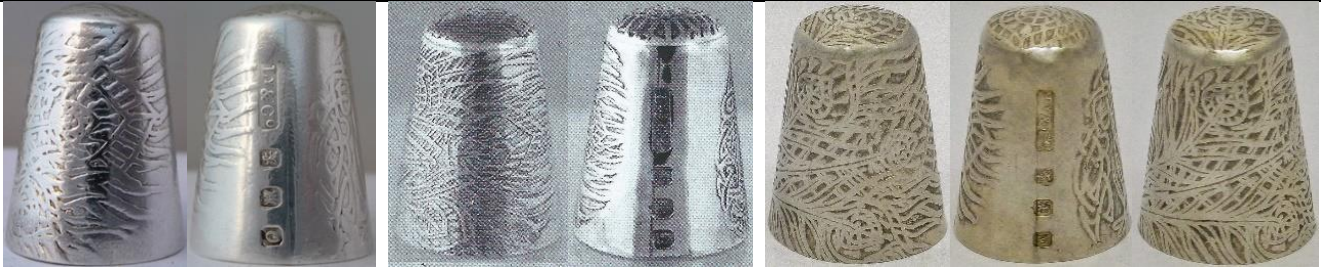


1981

London

CD Royal Wedding St Paul's 1981

Liberty & Co (Ly&Co)



1987 1988 1989

Edinburgh

Hera feathery design created by Arthur Silver
vertical hallmarks

J.N. Lowe (Sheffield) Limited (JNL)



1978
Sheffield



1978
Sheffield

Montagu Malleon (MM)

West Finchley London



1980

London

raised gold lettering (which is not Arabic)

Geoff Mansell (GFM)

Geoff Mansell is the husband of one of the Thimble Society of London (Midland Group) members. He took up silversmithing in his 70s. The group was started by Norma Spicer for the TSL local members



1992

Birmingham

If you look closely at the shield, you will see a large letter 'T' across the top and between the other letters for
TSLMG for Thimble Society of London Midland Group

large assay marks

R: membership pin

William H Manton (WM)

Pittsford Street Birmingham

trading as Birmingham Gold & Silversmiths Ltd

probably made by **JS&S**

where there are no hallmark dates, the thimbles are 2002 stock items



1980s
Birmingham



1982
Birmingham



1982
Birmingham



1983
Birmingham



1983 1984
Birmingham



1983 1988 1995 1996

Birmingham

similar design to **JHB - WHM**



1984 1985
Birmingham
stylised leaves
similar design to **WHM**



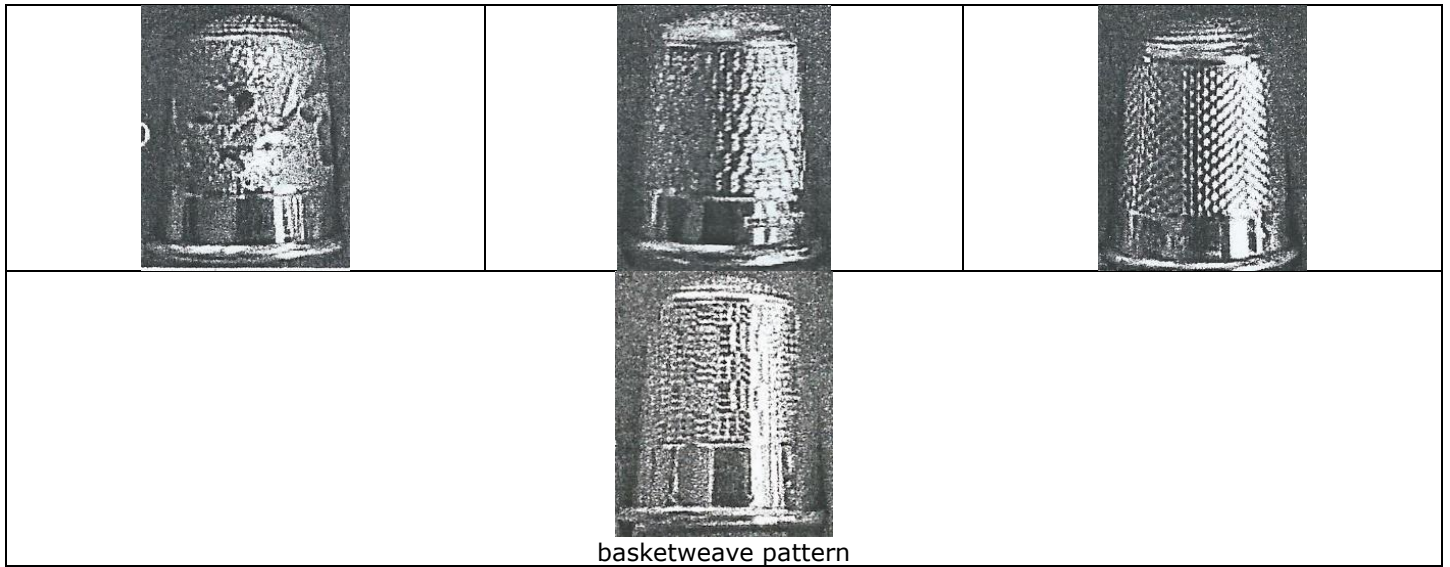
1987
Birmingham
similar design to **WHM**



1993
Birmingham
heavy, patterned rim



similar design to **WHM**
probably made by **JS&S**



Mappin & Webb Ltd (M^N&W^B)

Mappin & Webb are retail jewellers so the thimbles featured were made by British thimble makers, with the M^N&W^B marks.



1977 1978

London

applied gilt flowers and leaves on stippled ground
similar design to **HOL - TT**



1981

London

commemorating the Marriage of Prince Charles
made by **Gerald Benney** for Mappin & Webb
Spencer Family crest



1981
London
 commemorating the Marriage of Prince Charles
 made by **Robert Legg** for Mappin & Webb

Henry Booth Marland (HBM)



1987 1988 1991
London Edinburgh
 set with three garnets – ropelike rim
 design in art nouveau tradition of Charles Rennie Macintosh
 handmade – heavy
 limited to **250**



1988
London
 applied dragon
 handpunched apex

A Marston & Company (A(M)&Co)

Birmingham
 probably made by **JS&S**



1981
Birmingham
 brushed rim and apex
 similar design to **SMCo - REP**



1981 Birmingham

Peter Charles Maxwell-Aylwin (PCMA)

Camberley Surrey



1980

London

strong rim and hand indented apex



Camberley store now closed

Eleanor B McDougall (EBM)

Isle of Mull Scotland



1988

Edinburgh

applied Viking ship

W H Miller (WHM)

Birmingham

trading as Miller Jewellers Ltd

distinctive squat shape

probably made by **JS&S**



1983 1985 1989
Birmingham
Brightcut
L: unindented apex
similar design to **JHB - WM**



1983
Birmingham
Brightcut diagonally



1984 1985 1989
Birmingham
Floral
textured apex



1984
Birmingham
stylised leaves
similar design to **WM**



1984
Birmingham



1984
Birmingham
stylised leaves all over pattern
textured apex



1985
Birmingham
stylised Roses pattern
R: wider indentations on apex - L: more domed





1986 1989
Birmingham
 stylised Acanthus designs over striations
 some with more textured apex
 similar design to **WM**



1986
Birmingham
 Acanthus
 textured apex



1986
Birmingham
 stylised leaves in vertical rows
 textured apex



1986
Birmingham
 Flowers over striations
 Textured apex



1989
Birmingham
 Guernsey coat-of-arms
 similar design to **MG**



1989
Birmingham
 flowers



Birmingham
 similar design to **WM**

Monica Gems Ltd (MGLd)

Norfolk

Monica Vinader concentrates now on jewellery with gems. She has a jewellery store in London (2018)



1999
London
925
kittens



2000
London
applied scissors



Moody & Archer (M&A)

Birmingham



1978
Birmingham
stippled surface
similar design to **P&S**



Birmingham
delightful blue enamelled band
with strongly petalled flowers



stippled surface



1985
Birmingham
handpainted enamelling by Jo Withers Madeley Telford Shropshire

Paul V Morley (PVM)



1983
London
gilt sterling silver
commemorating 1983 Anniversary of Queen Elizabeth
II's Coronation
with jewelled thistles, rose and shamrock on stippled
surface



1987
London
18ct gold with applied Daffodils and emeralds on two
raised bands using two colours of gold
limited to **50**
commissioned by Thimble Society of London, Autumn
1987



London
stippled surface with gilt Bee at apex
enamelled leaves on rim

National Trust of Scotland (NTS)

Edinburgh

I wonder which Scottish silversmith produced these for the NTS?



1986
Edinburgh
Celtic design



1986
Edinburgh
commemorating the Marriage of Prince Andrew to Sarah
Ferguson
this was probably made by **PDAC**

Next PLC (nt)

probably made by **JS&S**



1989
Birmingham



1989
Birmingham

Tho these thimble appear to be identical, the maker's marks are different. See topic on Marks on British silver thimbles
similar design to **B&Co - nt - E&Co - MK**

Peter Nicholas (PN)

Peter Nicholas was a company set up by Peter Lunn and Nicholas Plummer. Peter Lunn is a craftsman specialising in spinning, carving and 3 D design. He worked for Stuart Devlin from 1973 to 1983 before setting up Peter Nicholas and Co Ltd which continued until 1991. He now works for himself, mainly to commission and has been involved in education



1990
London

commemorating the 90th (1900-1990) birthday of Queen Elizabeth the Queen Mother
Tudor Rose pattern on apex

Ray Nimmo (RN)

Handmade. Pre-2013 Ray's thimbles were not assayed. Those thimbles were marked Sterling + his maker's mark. Some of these thimbles are one-offs - most of the attributed names or descriptions are by RN. Note the many different thimble shapes used and the many type of rims
Other examples: Placename thimbles from around the world



[2006]



[2006]



[2007]



[January 2008]



[2008]
BIGSWELL



[2008] 2013
Birmingham
925
 NOBODYS PERFECT



[2012] 2013
Birmingham
925
 TITANIC



2013
Birmingham
925
 bulleyes
 with squared patterning on apex



2013
Birmingham
925
 diamonds
 with circles patterning on apex



2013
Birmingham
925
 random flowers



2013
Birmingham
925
 random leaves



2013
Birmingham
925
 atomic pattern



2013
Birmingham
925
 Madonna



2013
Birmingham
925
 Raphael's angel



2013
Birmingham
925
mushroom-shaped



2013 2014
Birmingham
925
based on a Victorian design



2013
Birmingham
925
applied daffodils with bee on apex with bubbly surface



2013
Birmingham
925
Hermes



2013
Birmingham
925
MYRA



2013
Birmingham
925
GOOD LUCK



2014 2016
Birmingham
925
butterfly



2014
Birmingham
925
leaves and berries
with squared circles patterning on apex



2014 2020
Birmingham
925
HOME SWEET HOME



2014 2020
Birmingham
925
DORA



2015
Birmingham
925
Art nouveau girl



2015
Birmingham
925
four leaf clover



2015
Birmingham
925
LOVE (using love heart)
over diamond-shapes all over



2015 2020
Birmingham
925
all over geometric cubism



2015
Birmingham
925
WISH
Rebus: wish upon a star



2015
Birmingham
large flower
beaded rim



2015 2016
Birmingham
flowers



2015
Birmingham
925
Irish claddagh ring



2015
Birmingham
925
Madonna and child



2015
Birmingham
925
spread eagle



2015 2016 2020
Birmingham
925
'Catch of the Day'



2015
Birmingham
925
owl with moon
owl patterning all round



2015
Birmingham
forget-me-nots



2015
Birmingham
Ichtys symbol



2015
Birmingham
holly



2015
Birmingham
mouse



2015
Birmingham
stylised frog



2015
Birmingham
925
small flowers



2015
Birmingham
dragonfly



2015
Birmingham
925
Lincoln Imp



2015
Birmingham
rose
stippled ground
with circles patterning on apex



2015
Birmingham
leaves
with circles patterning on apex



2015
Birmingham
hearts



2015
Birmingham
turtle
swirled ground



2015 2020
Birmingham
elephants



2015 2016
Birmingham
925
galleried band



2015
Birmingham
turtles



2015
Birmingham
925
Trinity Celtic knot



2015
Birmingham
925
Yorkshire rose



2015
Birmingham
925
thistle
over circle-shapes all over



2016
Birmingham
925
large leaves and flowers



2016
Birmingham
925
morning glory



2016
Birmingham
925
sheep
textured ground with wire rim



2016
Birmingham
925
Marauding Mouse meeses



2016
Birmingham
925
dormouse



2016
Birmingham
925
turtle
textured ground



2016 2020
Birmingham
925
'Safari' with zebras



2016 2020
Birmingham
925
flowers and leaves



2016
Birmingham
925
floral



2016
Birmingham
925
Westminster Abbey



2016
Birmingham
925
leaves
textured ground



2016 2020
Birmingham
925
donkey with saddle
R: textured ground



2016
Birmingham
925
Scottie dog



2016
Birmingham
925
elephant



2016
Birmingham
925
frogs



2016
Birmingham
925
hedgehog



2016
Birmingham
925
pigs might fly



2016
Birmingham
925
snake



2016 2020
Birmingham
925
Art Nouveau flower pattern



2016 2020
Birmingham
925
Victorian pattering
JOY



2016
Birmingham
925
rosy-posy flower



2016
Birmingham
925
hedgehog atop



2016
Birmingham
925
cats



2016
Birmingham
925
doves in flight



2020
Birmingham
925
'Alien Road Map'



2020
Birmingham
925
MMXX



2020
Birmingham
925
shell fan



2020
Birmingham
925

'Swan Lake'
with articulated swan opening to reveal ballerina



2020
Birmingham
925

commissioned [one only] engraving all round - Master
Engraver Keith A Raes [KAR]
'Three Blind Mice'



2020
Birmingham
925

commissioned [one only] engraving all
round - Master Engraver Keith A Raes
(KAR)
'Humpty Dumpty sat on a Wall'



2020
Birmingham
925

commissioned [one only] engraving all round - Master
Engraver Keith A Raes (KAR)
'Hey Diddle Diddle'



2020
Birmingham
925

commissioned [one only] engraving all round - Master
Engraver Keith A Raes (KAR)
'Little Miss Muffet'



2020
Birmingham
925

commissioned [one only] engraving all round
- Master Engraver Keith A Raes (KAR)
'Simple Simon met a pieman'



2020
Birmingham
925

commissioned [one only] engraving all round - Master
Engraver Keith A Raes (KAR)
'The Royal Coat of Arms' 'Dieu et Mon droit'



tortoises with other animals



FOREVER
Marked STERLING

Ari Daniel Norman (AN)

London

Ari Norman was the first and only silversmith to win the Queen's Award for Export Excellence in 1989 and was awarded Freedom of the City of London in 1992 for services rendered to the British silver industry where there are no hallmark dates, the thimbles are stock items – if yours has a hallmark date, please share. From revisiting his range it would seem that Norman imports thimbles and places his maker's mark on them.

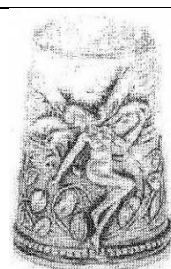
www.aridnorman.com



1982 1987 1989 1991 1992 2000
2008 2017
London
gallied rim
1991 and 2000 have vertical
hallmarks



1983
London
turquoise stones and wire work
import mark
Mexico



1983
London
fairies
import mark
Topazio Portugal



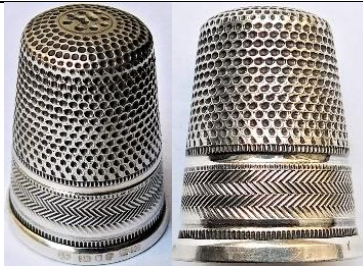
1985
London
HARRODS lettered vertically
with etched flower
gallied rim



1989 1990
London
925
swans
there is an extra mark for the Queen's Award for Export
Achievement
an identical design made by **MH**



1988
London
925
 filigree
 London import mark
 Yemen



1988
London



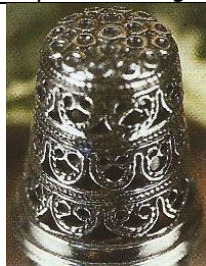
1989 1994
London
 marcassite flower attached
 galleried band with vertical hallmarks



1990
London
925
 London's Houses of Parliament
 London import mark
 Topazio Portugal



1991
London
925
 porcelain Rose Primrose and Pansy applied
 vertical hallmarks
 galleried rim



1991
London
 filigree



1993
London
925
 turquoise



1994 2001 2009
London
925
 copy of **SF** Medusa Head



1994 1999 2004
London
925
 marcasite swallow attached
 red ruby eye
 galleried rim



1995
London
925
 cupids angels cherubs



1999 and unassayed
London
 onyx and crystals around apex
 with crystals at rim – size 3



London
 acanthus swirl
 London import mark
 Topazio Portugal



London
 butterfly
 London import mark
 Topazio Portugal



London
 cat
 London import mark
 Topazio Portugal



London
 shamrock
 London import mark
 Topazio Portugal



filigree
 London import mark
 Yemen



marcasite fleur de lis attached
 galleried rim



HARRODS lettered horizontally





Ari D Norman thimble box London with 2018 set of hallmarks on inner lid

Vita Nutayakul (VN)

Thai Designs Dist. Ltd
Wembley Middlesex



1978
London
Thai design



1979
London
floral etching



Ken Palmer (KP)



1986
Birmingham
nature scene
domed stone
fluted rim



1987
Birmingham
Bees' scene all round
opal inset in apex
fluted rim



1987
Birmingham
rural scene
paua shell in apex
fluted rim

Pattison & Son (P&S)

Thirsk North Yorkshire
still in operation as jewellers in 2023



1983
Sheffield



Geoffrey Payne (GP)



1992
Birmingham

Sheffield Assay Office (SAO)



1996
Sheffield
Whitby Abbey
with Whitby jet apex
see also: Ralph Weston

Douglas Pell Silverware (DP)

Sawbridgeworth

they are wholesalers and most of their thimbles have been made outside of the UK



1988

Birmingham



1989

Birmingham

similar design to **B&Co – MK – nt E&Co**



1990 1997

made by **AN**



2004

Birmingham

925

'Harrods KNIGHTSBRIDGE'

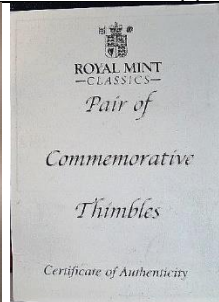


2006

Birmingham

925

applied thurpence



2006


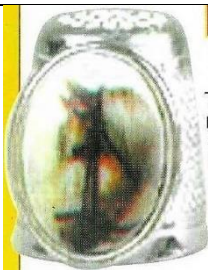

Birmingham

commemorating Queen Elizabeth's 80th Birthday

commissioned by Royal Archives Royal Mint

500 pairs

design based on 80th Birthday Royal Mint medal

 <p>2007 <u>Birmingham</u> <u>925</u> bunch of grapes 14 rubies around rim see similar design AJP</p>	 <p>2007 <u>Birmingham</u> <u>925</u> horse inset</p>	 <p>2007 <u>Birmingham</u> <u>925</u> leaves - pink flower on apex</p>
 <p>2007 <u>Birmingham</u> <u>925</u> Wedgwood inset with angel</p>		

Andrew (Andy) J Poole (AJP)

Birmingham

The Silverware Shop

where there are no hallmark dates, the thimbles are stock items – if yours has a hallmark date, please share

 <p>1982 <u>Birmingham</u></p>	 <p>1985 <u>Birmingham</u> 'Harrods'</p>	 <p>2002 <u>Birmingham</u> <u>925</u></p>
 <p>2003 <u>Birmingham</u> <u>925</u></p>	 <p>2006 <u>Birmingham</u> amethyst stones at rim</p>	 <p>2006 <u>Birmingham</u> <u>925</u> applied fish and flowers</p>



2006
Birmingham
925
alternating ruby & sapphires stones
around raised rim



2006
Birmingham
925
ceramic rose inset



2006
Birmingham
thistle



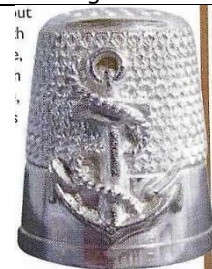
2006
Birmingham
925
hand engraved



2006
Birmingham
925
applied grapes
rubies around raised rim
see similar design **DP**



2006
Birmingham
925
pink enamelled flower on apex



2007 Birmingham
anchor



2007
Birmingham
flower with dropped rim on two sides



2007
Birmingham
'Welsh Thimblers 2007'
Prince of Wales feathers
limited to **29**



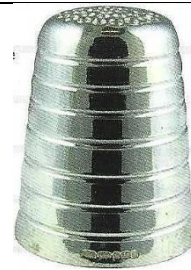
2007
Birmingham
St Christopher



2007
Birmingham
dolphin



2007
Birmingham
commemorating The 10th Conference Dorset Thimble Society
applied dolphin



2008
Birmingham
seven engraved rings



2009
Birmingham
ceramic rose inset



2009
Birmingham
commemorating 11th Conference Dorset Thimble Society
applied thimble



2011
Birmingham
commemorating 12th Conference Dorset Thimble Society



2012
Birmingham
dragonfly



2012
Birmingham
925
applied grapes



2012
Birmingham
commemorating Diamond Jubilee of Queen Elizabeth II
Jubilee hallmark used as part of design



2017
Birmingham
applied treble clef



precious stones around
centre

		
	very wide band of oak leaves	
		
	garnets form the grapes	precious stones around rim
		
large slowers	additional mark for TCG – commissioned by them	

RE Porter (REP)

Bournemouth
probably made by **JS&S**



1981
Birmingham
similar design to **A(M)&Co - SMCo**

Diane Jaqueline Radley (DJR)

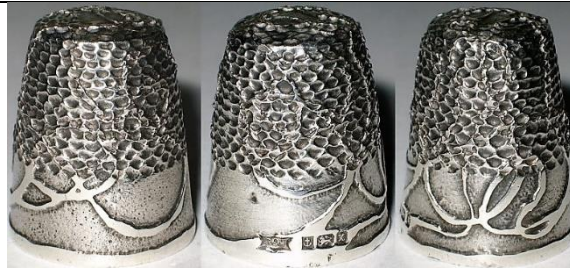


1981
London
stippled surface

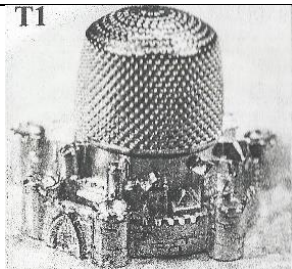
Rayment & Hull (R&H)

Isle of Thanet Kent

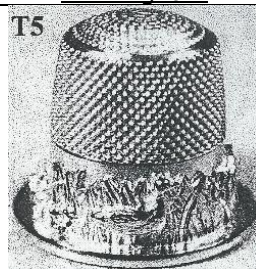
Neil Rayment and Robert Hull trained at Medway College of Art and Design. They founded Rayment & Hull in 1990 as goldsmiths and silversmiths. They won Designer of the Year in the UK Jewellery Awards in 1994 where there are no hallmark dates, the thimbles are stock items – if yours has a hallmark date, please share they undertook commissions ceased making thimbles in 2002



1997
Birmingham



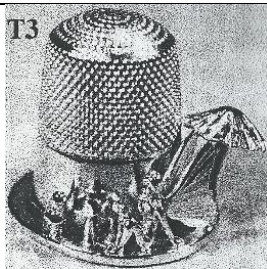
T1
medieval
applied Gothic castle and turrets
around rim



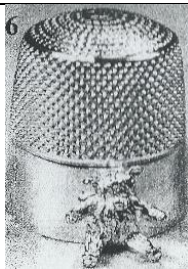
T5
country
Mother Goose and four goslings in
rushes around rim



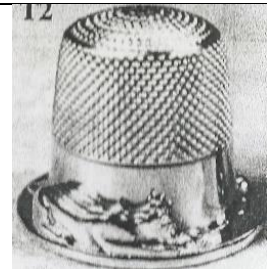
4
day and night
happy faces of sun and moon



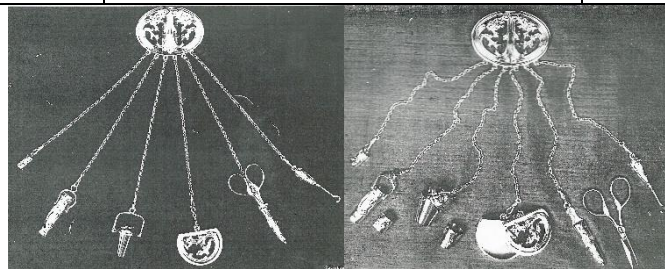
T3
fairy tale
fairy resting against a mushroom
around rim



6
memories
teddy bear applied to rim



12
mousing around
a game of cat and mouse around rim



chateleine contains 6 chains of needlework tools
including thimble in thimble bucket
two views

Ludwig Redl (LR)

Vienna

Most known for designing the 1984 American Revolution commemorative set. See **GJD** (in part 1 A-H)

The Shakespearian and Wagner Ring sets bear LR maker's marks

Britannia silver, finished in 24ct gold and gilded inside. Plain polished apex and rim

The Ring of Nibelungen set of four with 250 sets planned tho probably only 20 sets produced by 1988.

The Shakespearian is a set depicting three of Shakespeare's plays. They were made in pewter for sale at The Globe – only 50 sets were made in sterling



1983

London

The Last Supper

R: silver-plated bronze



1984

London

Hamlet

To be or not to be that is the question



1984

London

Macbeth

Is this a dagger which I see before me?



1984

London

Romeo and Juliet

Romeo Romeo wherefore art thou Romeo



1984

London

Macbeth

Is this a dagger which I see before me?
sterling silver edition





1984

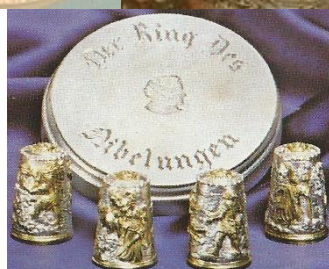
London

Der Ring des Nibelungen

boxed set of four finished in 24ct gold, showing the four most important scenes in the Wagnerian opera

[set no] 225 lettered on apex

REDL lettered in addition to hallmarks



differently boxed set



1984 1985

London

925

Claddagh ring, gilded with 24 carat gold

L: b&w photo



Ludwig Redl at work 1984

Russell C Rimes (RR)

Sheffield

thimbles by this maker exist in copper with stone apexes



1985
Sheffield
mother-of-pearl set flat into apex



1986
Sheffield
unusual indentations on apex



1986
Sheffield
blue stone indented flat apex
© in apex



1989
Sheffield
unusual indentations on apex



Rimes worked as silversmith and spinner in David Mellor's Park Lane workshop in Sheffield for sixty years - 1974

John Ritchie



1986
Edinburgh
Robbie Burns
vertical hallmark

Stephen J Rose (SJR)

London

John and Arthur Rose first registered their mark at the Birmingham assay office in 1932. John Rose was incorporated into SJ Rose and Sons of London in 1972

this maker has distinctively-shaped thimbles – most have a recognisable engine-turned stippled or brushed finish with bright-cut patterning. I have included all examples as each has a slightly different finish - many examples have the hallmarks upside-down, which would be facing the sewer when used on the finger. Sizing 4-6 (15.5mm-17mm)

Some of these size marks are lettered up in the apex

There is a Provisional Patent No **53211** on some of SJR's early thimbles. What was being patented?



1965

Birmingham

Pro.Pat 53211

also available in 9ct gold



1966

Birmingham

Pro.Pat 53211

size 8 in apex

R: marks upside down



1965

Birmingham

Pro.Pat 53211 – size 3
mirror image maker's mark



1966

Birmingham

size 4

marks upside down



1966

Birmingham

Pro.Pat 53211

size 7

marks upside down



1967

Birmingham

marks upside down



1967 1970 1971 1976
Birmingham
 + England (L)
 marks upside down
 two narrow faceted bands



1967
Birmingham
 + England
 marks upside down



1967 1968
Birmingham
 marks upside down



1967 1971
Birmingham
 marks upside down



1967
Birmingham
 + England
 marks upside down



1967
Birmingham
 + England
 two narrow faceted bands
 marks upside down



1968
Birmingham
 handpainted roses on textured band
 two narrow faceted bands
 marks upside down



1968
Birmingham
 marks upside down
 this is a popular design from SJR but
 there are always some differences



1969
Birmingham
 handpainted roses
 two narrow faceted bands
 marks upside down



1969 1970 1974
Birmingham
 two narrow faceted bands
 marks upside down
 R: + 'England'
 L: showing marks to face sewer size 5



1970

Birmingham

marks upside down

R: did SJR forget to add the patterning after assaying?
both sized in the apex for size 1



1971

Birmingham

marks upside down



1972 1992

Birmingham

JUST A THIMBLEFUL [R lettering upside down]



1972

Birmingham

handpainted roses

[different from 1969]
two narrow faceted bands



1973

Birmingham

apexes are decorated with a snowflake-type surface
two narrow faceted bands

L: marks upside down – R: marked 'England' - size 5 in apex



1973

Birmingham



1975

Birmingham

patterned apex

two narrow faceted bands



1975 1982

Birmingham



1976 1982

Birmingham

stone apex
size 9



1977

Birmingham

handpainted stylised flower band
two narrow faceted bands



1977

Birmingham

handpainted roses
two narrow faceted bands
[different from 1969 and 1972]



1978
Birmingham
marks upside down + size 2



1981
Birmingham



1983
Birmingham
mirror image maker's mark

Margarette Elizabeth Round (MER)



1973
London
well defined glittery surface

David Scott-Walker (DSW)

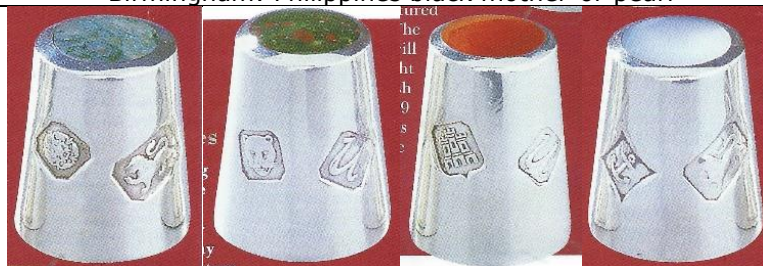
Sheffield

David's thimbles were also available thru The Thimble Guild in Scotland during 2001-2004. Some of the thimble names are from their catalogues

the set of 32 dated between 1993-2000 has semi-precious stones in the apex and plain polished sides
the set depicts the last eight years of British hallmarking as EEC pre-1999 regulations where compliance saw many of the British hallmarks disappear. Shows the assay marks of the four major assay offices. 100 sets
each thimble has the hallmark year, the assay office mark, the standard mark (lion passant) and the maker's mark, as part of the design



1993
Sheffield: Mexican crazy lace
London: Brazilian red banded agate
Edinburgh: Brazilian red banded agate
Birmingham: Philippines black mother-of-pearl



1994
Sheffield: Moss agate
London: Blood stone
Edinburgh: Carnelian
Birmingham: Mother-of-pearl



1995
Birmingham: Opal
Edinburgh: Blue tiger eye
London: Red moss agate
Sheffield: Lapis lazuli



1996
Sheffield: Bottle green malachite
Edinburgh: Black onyx
Birmingham: Blue John
London: Brown brachated jasper



1997
Sheffield: Turquoise
Birmingham: Italian brown onyx
London: Green banded agate
Edinburgh: Tiger eye



1998
London: Namibian blue lace
Sheffield: Stripy brown agate
Edinburgh: Turitella
Birmingham: black and white agate



1999
Birmingham: Yellow agate
Edinburgh: Purple agate
London: Pink agate
Sheffield: Blue moss agate



2000

925

London: Sodalite

Sheffield: jet

Birmingham: Yellow crazy lace

Edinburgh: Fancy jasper



1982
Sheffield
ring with applied flower
stone apex



1982
Sheffield
ring with applied flower
speckled stone apex



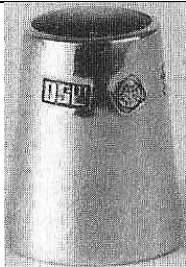
1983
Sheffield



1983
Sheffield
black onyx apex



1983
Sheffield
amethyst



1983
Sheffield
mother of pearl apex



1984
Sheffield
blue John stone apex



1985
Sheffield
mauve stone



1992
Sheffield
stone apex



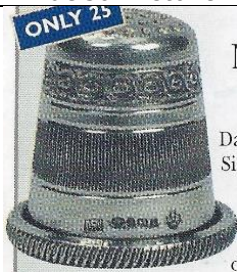
1992
Sheffield
stone apexes R: jet
part of set of 12



1995
Birmingham
Blue John stone



1995
Birmingham
Blue John stone



2000
925
Millennium



2001
zigzag diamond



2001
fern



2001
zigzag



2002
925
commemorating Queen Elizabeth's Golden Jubilee set of 4
using hallmarks with Diamond Jubilee mark as part of design
Edinburgh: Blue agate
Birmingham: Red agate
London: Purple agate
Sheffield: Mother-of-pearl



2003
double scrolls



2003
Sheffield
double scrolls
black stone apex



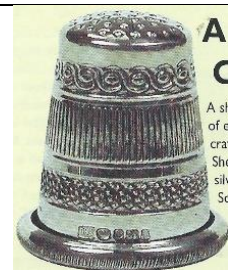
2004
scrolls



2004
Herringbone



2004
Sheffield
925
black onyx apex



2005
925



black stone
leaves and flower band
black stone



double scrolls



moonstone in apex



red carnelian
stippled surface

Gerald Sheehan (GS)

Llantrisant Wales

created for the Royal Mint

between 2002-2006 Sheehan was the Chief Executive and Deputy Master of the Royal Mint

Set 1: The designs were inspired by the national emblems used on coins

the presentation boxes' ribboning for this set of six Classics is lettered Douglas Pell

Is Pell the maker for these Royal Mint thimbles, using the GS mark as the maker's mark?

limited to **500** sets

thimbles are quite wide having a 20mm diameter

There are other similar Royal Mint thimble sets but they bear no hallmarks, just '925' – included here for completeness



2002 2004

London + import mark

925

Scotland Scottish thistle

taken from Scottish £1 coin



2004

London + import mark

925

England Tudor rose

taken from 1983 £1 coin



2004

London + import mark

925

Northern Ireland Irish shamrocks

taken from Northern Ireland £1 coin



2004

London + import mark

925

Wales Welsh leeks

taken from £1 coin



2004

London + import mark

925

laurel

wreath taken from the English sovereign coin



2004 2005

London + import mark

925

Floral

wreath taken from the English Coronation crown coin



Classics 2004 presentation box set showing Douglas Pell lettered on ribboning



there is an additional mark on the 2005 thimbles – for the Tower of London
Hallmarks L>R: Tower of London mark – maker's mark GS – Lion passant – 925 – London's assay mark of Leopard's head – 'f' for for 2005 (Floral)

There is a set of six thimbles featuring historic sites around London
It's not known whether they bear any hallmarks. Maybe 925?



Big Ben



Buckingham Palace



Tower Bridge



Tower of London

There are six Royal Mail – marketed as Royal Mint -Classics- thimbles, which are lettered – Clifton Suspension Bridge – SS Great Britain – Royal Albert Bridge – Brunel Isambard Kingdom – Paddington – SS Great Eastern
The thimbles are smooth-sided with the design in relief
Marked 925



Clifton Suspension Bridge



SS Great Britain



Royal Albert Bridge



Brunel Isambard Kingdom



Paddington



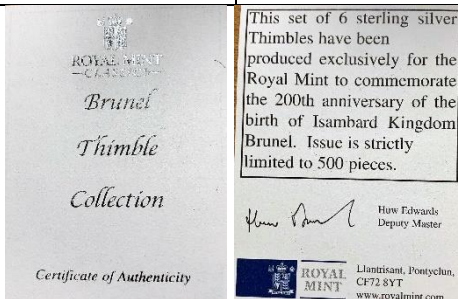
SS Great Eastern



boxed set



open boxed set



There are six Royal Mint Classics, Battle of Trafalgar commemorative thimbles (1805-2005) as a boxed set which are lettered – Nelson – Expects (enamelled semaphore flags) – Victory – October 1805 – 200th anniversary (compass) – Battle

The thimbles are ribbed with the design in relief

Marked 925



Harvey R Sillis (HRS)

Potters Bar Hertfordshire

Sillis' thimbles were also available thru The Thimble Guild in Scotland 2001-2005. Some of the thimble names are from their catalogues

there is a large range in the thimble weights = 9.1-23.2 grammes

additional mark of IPG indicating Sillis is a Fellow of the Institute of Professional Goldsmiths



2001

London

925

Four Panels

14.5 grammes

additional mark of IPG indicating Sillis is a Fellow of the Institute of Professional Goldsmiths



2001

London

925

Pierced Diamond Trellis

9.1 grammes

additional mark of IPG indicating Sillis is a Fellow of the Institute of Professional Goldsmiths



2002

London

925

commemorating Queen Elizabeth's Golden Jubilee - heraldic statues of The Queen's Beasts

five of the mythical beasts are: Unicorn of Scotland - red Dragon of Wales - Griffin of Edward III - Lion of England - on five sided thimble

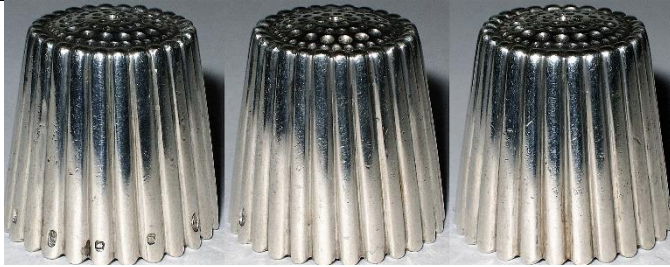
rose on apex and the Golden Jubilee special extra mark

18 grammes



2002
London
925

commemorating Queen Elizabeth's Golden Jubilee
Scottish Thistle - Irish Shamrock - Welsh Leek on sides - English Rose on apex
the Golden Jubilee special extra mark
also available in silver-gilt and 9ct gold
16.4 grammes



2002 2003
London
925

Cupcake

hallmarks on each of the 'slices'
17.4 grammes

additional mark of IPG indicating Sillis is a Fellow of the
Institute of Professional Goldsmiths



2002
London
925

Petals

six-panels like petals with speckles spots with dished
apex
18.5 grammes



2002
London
925

Silver petals
18.3 grammes

accompanying certificate has a couple of errors



2003
London
925
Grid

pierced diagonal grid in shape of a square
13.9 grammes



2003
London
925
Thread
23.2 grammes



2003
London
925
All Square
also available in 9ct gold
18.3 grammes



2003
London
925
21st birthday of The Thimble Guild
cutaway design
16.4 grammes
also available in 9ct gold
additional mark of IPG indicating Sillis is a Fellow of the Institute of Professional Goldsmiths



2004 2005
London
925
Geometric
pierced zigzags
zigzag on apex
additional mark of IPG indicating Sillis is a Fellow of the Institute of Professional Goldsmiths
11.6 grammes



2004
London
925
Surf's Up!
pierced
13.3 grammes



2004
London
925
Ripples



2005
London
925
Battle of Trafalgar
200th Anniversary showing HMS Victory
with anchor in relief on apex



2005
London
925
10th anniversary of the death of Diana Princess of Wales 31.8.2007
L side: roses – R side: hearts – apex: her coat-of-arms



2005
London
925
60th wedding anniversary of Queen Elizabeth and Prince Philip
Diamond set into apex above '60'



2012
London
925

The Diamond Jubilee of Queen Elizabeth 1952-2012
showing in panels: Royal regalia – HM coat-of-arms – the Coronation Chair
additional mark on apex of IPG indicating Sillis is a Fellow of the Institute of Professional Goldsmiths
and the Diamond Jubilee special extra mark



Presented by Harvey K Sillis FIPG
To Her Majesty Queen Elizabeth II
To commemorate both Her
Golden and Diamond Jubilee



N St J Paint & Sons (NSHP)

St Peter's Port Guernsey Channel Isles

they undertook commissions



1999
London

applied gilded Nautilus shells
four different rims – plain – wavy rope-like – beaded – galiered
includes Millennium mark

Howard Malcolm Stearn (HMS)



1982
London



1982
London

Sterling Merchandising Co (SMCo)

Kent
probably made by **JS&S**



1981
Birmingham
similar design to **A(M)&Co - REP**



1981
Birmingham



1981
Birmingham



1982
Birmingham

Swatkins Group (P&S)

Walsall West Midlands
probably made by **JS&S**



1979 1992
Birmingham
stippled surface
similar design to **M&A**



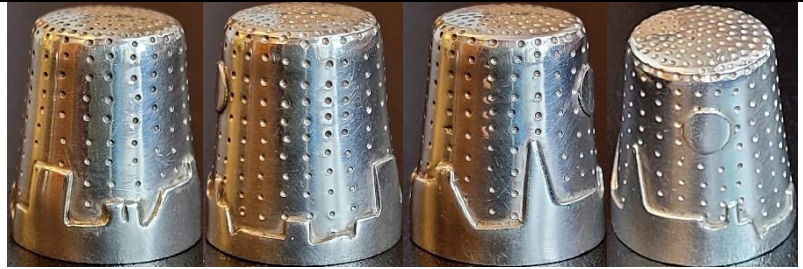
1979
Birmingham

Caroline Marie Taylor (CMT)

London



1979
London
Heavenly Skies



1979
London
stylised skyline



1980
London



1980
London



1980
London
incorporating pearls

Thimble Collectors Guild (TCG)

Biggar Scotland

made by various thimblemakers but when the TCG maker's mark is used, they are only featured here. TCG maker's mark was registered in 1989 for thimbles sold thru their thimble catalogues. This promoted British silversmiths to collectors around the world – Frank Jones of Swann Thimbles was the principal thimble maker during this period in the UK



1989
Edinburgh
made by **PDAC**



1989
Birmingham
Lord's Prayer written on thread thru
needle
daisies apex
made by **S(T)**



1989
Birmingham
applied Coach
daisies apex
made by **S(T)**



1989
Birmingham
A Gift of Love
part of a series recreating Victorian slogan thimbles
made by **S(T)**



1989 1990
Edinburgh
four assay marks as design
made by **PDAC**
limited to **950**
The Guild commissioned one in 9ct gold



1989 1995
Birmingham
made by **S(T)**



1991
Birmingham
made by **S(T)**



1992 1994
Birmingham
made by **S(T)**
his replica of a Dorcas Flora
pattern



1992
Birmingham
made by **S(T)**
his replica of a Dorcas
Diamond pattern



1992
Birmingham
with bands of rubies and diamonds
commemorating 40 Years of QEII's Ascension to
the Throne
made by **S(T)**



1993
Birmingham
with rubies
commemorating 40 Years of QEII's Coronation
made by **S(T)**



1994
Birmingham
made by **S(T)**



1995
Birmingham
commemorating 50 Years of VE Day
made by **S(T)**



1995 1996 1998 1999
Birmingham
made by **S(T)**



1995
Birmingham
1996
with thistles on band



1996 1997 1998
Birmingham
Windsor Castle
made by **S(T)**



1997
Birmingham
made by **S(T)**



1998
Birmingham
made by **S(T)**
inscribed 1900-1998
commemorating Queen Elizabeth the
Queen Mother's 98th birthday
with stone apex



1999
Birmingham
made by **S(T)**



2000
Birmingham
925
made by **S(T)**



Birmingham
925
made by **S(T)**



Birmingham
stone apex
made by **S(T)**

Thimble Society of London (TSL)

made by various thimblemakers for sale to members of the TSL. These commissions provided an outlet for British thimblemakers over the period of 1981-2009. TSL should be congratulated on the huge number of thimbles they commissioned over a nearly 30-year period

the makers' names were rarely revealed to members especially in the early days, tho James Swann & Son (JS&S) were commissioned for many of the TSL commemoratives. I will move (or remove) them from here once the maker's marks have been identified (other than JS&S who was too prolific a thimble maker to feature in this topic)



1982
Birmingham
commemorating first Anniversary of London Thimble Society 1982
malachite or moss agate stone in silver-gilt apex
commissioned by Thimble Society of London
maker: **D&F**



1982
Birmingham
commemorating Raising of the Mary Rose
+ 9ct gold
commissioned by Thimble Society of London
TSL is engraved under the exact replica of the ship
maker: **JS&S**



1983
applied enamel City of London coat-of-arms
The Thimble Society of London lettering on blue
enamelling around apex with 1983 in the centre
1983 on verso



1983
Birmingham
Bernard Weatherill elected Speaker 15th June 1983
'T.S.L.' included as Weatherill was also a member of the
Thimble Society of London
Parliamentary mace in relief on verso
tailor's thimble (as Weatherell was from a famous
family of tailors – Weatherell Bespoke Tailors)
beaded rim
maker: **JS&S**



1983

Birmingham

applied blue enamelled rosette
commemorating Mrs Thatcher returned General Election
maker: **JS&S**



1984

Birmingham

applied London coat-of-arms
commemorating Dame Mary Donaldson Elected Lord Mayor of London 1983 to 1984
2nd R: 9-ct gold
R: silver-gilt version
maker: **JS&S**



1984

Birmingham

blue, brown or green apex



1985

Birmingham

A Stitch in Time
blue enamelled lettering around band and blue
enamelling on apex
also available in silver-gilt
limited to **60**
maker: **JS&S**



1985

Birmingham

Queen Elizabeth the Queen Mother 85th birthday
4th August 1985
limited to **60**
maker: **D&F**



1985

Birmingham

Ted Hughes the Poet Laureate 9th December 1984
blue enamelled lettering around band and blue
enamelling on apex
also available in silver-gilt
limited to **60**
maker: **JS&S**



1986
Birmingham
 Her Majesty the Queen 60th Birthday
 maker: **JS&S**



1987
 Quilter's thimble



1989
Edinburgh
 made to commemorate TSL's Annual General Meeting
 TSL applied on the front
 AGM Sep 1989 Cambridge



1990
Birmingham
 hammer and sickle on smooth sides
 Mikhail Gorbachov Nobel Peace Prize Winner 1990



1990s
 Phoenix and Dragon pair
 engraved design



1991
 'TSL 1981-1991'
 10th anniversary with two 'jewels'
 maker: **Greif, Germany**



1992
 commemorating Anniversary of Sinking of the Titanic
 hand-engraved, with sketches
 limited to **500**
 maker: **Refia**



1994
 replica of a mid-17th century Cromwellian
 Commonwealth thimble with T S L in large capitals
 around the body of the thimble
 Roman numerals MCMXCIV for 1994 lettered around rim
 gold edition was offered at the time

Mike and Sylvia Thorpe (T)

Sark Channel Islands

formerly of Clos de Vaul Creux

these handmade thimbles are not assayed but have the T maker's mark on a map outline of Sark.



The makers left Sark in 2000



Trevor Towner (TT)

12 High Street Petersfield Hampshire

Freeman of the Goldsmiths Company

Towner was apprenticed at 15 for five years as an ecclesiastical silversmith

He then moved to London and worked for Stuart Devlin, the famous Australian-born gold and silversmith

In 1982 Towner opened his own business in Hampshire

[http: trevortowner.co.uk](http://trevortowner.co.uk)



1977

London

roses and leaves

applied gilt flowers and leaves on stippled ground

was the created to commemorate the Silver Jubilee of HM Queen Elizabeth II

similar design to **HOL - M^N&W^B**



1991

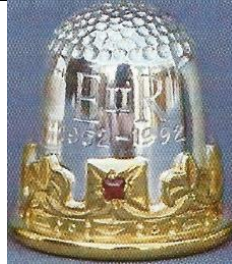
London

'Petersfield'

showing 18th century statue of William III which is situated in Petersfield's market square

this is one of a limited edition - no. 4 lettered on verso (no. 2 is in thimble box)

Petersfield is where Towner has his studio



1992

London

commemorating 40 Years Queen Elizabeth's Coronation

inset ruby

commissioned by Thimble Society of London



2006

London

commemorating Queen Elizabeth's 80th Birthday

silver gilt and rhodium 80 on apex

limited to **100**



2007

London

commemorating Queen Elizabeth's Diamond Wedding
rhodium plated silver bells on sterling silver or silver-gilt have EIIR on one – PP on the other
thimbles' limited number above hallmark
in TT jeweller's box



2011

London

commemorating the Marriage of Prince William
rhodium plated ribbon William & Catherine 29.4.2011
seed pearl and cabochon garnet on flowing ribbon are birthstones of the couple – TT lettered on verso
limited to 100
thimbles' limited number above hallmark
in TT jeweller's box



2012

London

commemorating 60th Diamond Jubilee of Queen Elizabeth
showing the Thames Jubilee Armada
diamond set in apex
thimbles' limited number above hallmark
in TT jeweller's box



Trevor Towner and display of his thimbles
Dorset Thimble Society 2008



Jill and Trevor (centre)

Troika Designs Ltd (TD^{LTD})

Birmingham



1982

Birmingham

L: DL - R: DDG in cursive lettering

Malcolm Keith Turner (MKT)

St Giles Street Norwich
some were imported



1996

London

925

import mark
applied elephant
made in Thailand

Lee Tyers (LT)

Nottingham

Lee is the Director of Repousse Ltd. From 2014 their thimbles are not hallmarked. They use the lost wax casting method, which gives clumsy definition



2004
Birmingham



[2025]
925
arts and crafts



[2025]
925
butterflies



[2025]
925
dhow
copy of Topazio thimble



[2025]
925
dhow
extra mark at right



[2025]
925
face
copy of Shirley Frost thimble



[2025]
925
dhow

P H Vogel & Co (PHV&C)

Birmingham



1964
Birmingham
Just a Thimbleful



1972
Birmingham
JUST A THIMBLEFUL 1 1/2 OZ

Laurence R Watson & Co Ltd (LRW)

Sheriff Hutton York

manufacturers of hallmarked silverware since 1966



1981
Birmingham



1983
Birmingham



1984
Birmingham



2001
Birmingham
925
gilt Bee atop beehive shape

Wensum Lodge Silversmiths (WLS)

Norwich



1984 Sheffield

Ralph Weston (RW)

Kells Gold & Silversmiths (Whitby) Ltd

Whitby

Kells Gold and Silversmiths was formed in 1989 on the Island of Mull. Ralph Weston designed a range of Celtic jewellery inspired by the beautiful islands of the Inner Hebrides and the illuminated manuscripts from the Book of Kells. He set the wonderful gems of these islands in his own exquisite pieces of jewellery. He trained and worked in Sheffield and Derbyshire, where he set the unique stone of the area, Blue John and having connections in Yorkshire, hand-cut and set, Whitby jet, supplying many shops in Whitby. Ralph Weston Designs are now based in Eyam Derbyshire

Many of his thimbles are not assayed – simply marked SILVER

see also: Sheffield Assay Office



1997 1999 2000

Edinburgh

Whitby Abbey

with Whitby jet apex

(1997 version at top L is missing maker's mark RW)

bottom: 2000 has 2000 mark + 925



'Silver'
with onyx apex



'Silver'
with backed stone apex
rope rim



'Silver'
rope rim



'Silver'
blue stone
rope rim

John Wightman & Sarah McKechnie Bell (J&SB)

outside **Edinburgh**

they described themselves as amateur lapidaries and silversmiths



1987

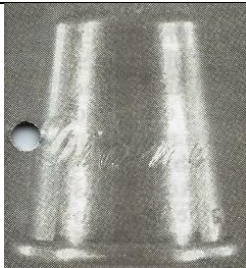
Edinburgh

hallmarks are lettered inside the thimble

Wilkinson Silversmiths (WS)

Birmingham

in 1987 The Thimble Guild in Scotland offered the opportunity to have a first name engraved



1987

Birmingham

DIANA



1987

Birmingham

IVY



1987

Birmingham

MARY

Barry M Witmond (BMW)

Stamford Lincolnshire

goldsmith and silversmith

formed his company in 1976



2003

London

applied Wheat Sheaf

The list of **Contributors** may be found in the A-H listing

© **Sue Gowan**
March 2016