

Modern British handpainted china thimbles

1978-2022

At the start of the modern thimble collecting era of the late 1970s, some of Great Britain's china houses produced handpainted thimbles. This was a time consuming and costly exercise. The demand avalanche for instant and cheaper thimbles swamped thimble manufacturers as we entered 1980.

The porcelain houses realised that creating their own decals or transfers using a skilled artist would speed up production and an unlimited number could be churned out.

Initially, companies like Caverswall had their artists hand-touch their designs with spots of paint and you will find artists' names like William Tipton, John Ball, C Nunn, Holmes Gray or Mary Grant named on the thimbles. These are not handpainted thimbles: just hand touched.

Sutherland, who produced china thimbles the longest, made thimbles in the same way – but didn't even follow the hand-touched route. Some of their thimbles are labelled hand enamelled. Rather a few spots of enamel enhances the design – this is known as champleve. JB, ME and PH (Pauline Haughton) are initials found on Sutherland thimbles enhanced in this manner.

Royal Worcester, the doyenne of handpainted thimbles from the 1870s, faced the same problem. They did not want to employ more artists and thimbles are time-consuming to paint freehand with at least three firings. In the 1970s, the foreman of the painters' division, Edward Townsend, came up with a solution. He designed a number of outline prints - which were printed onto the blank thimbles. The artists did not have to create an individual painting but merely coloured in the blank design. This speeded up the process noticeably. Even that didn't help as by 1986, the last handpainted RW thimble was painted. They turned to decal thimbles to keep up with demand.

The pendulum did begin to swing back in the 1990s and handpainted thimbles came back into their own in the small numbers as before.

The artists had access to blank thimbles from any source. This would give them creative freedom and some commercial success.

Handpainted thimbles take a while to paint, so they are created in a limited supply.

Many of the artists didn't only paint thimbles – they formed a minute part of their output. They painted vases, plates, brooches, lidded jars, figurines of fauna, paintings, coffee pots, miniatures and handpainted enamel boxes etc.

A few of these artists have painted on wood, glass and silver thimbles and on enamel. They are outside the scope of this topic. Thimbles with handpainted flowers affixed will also not feature here.

[See my topics on specific British painters of china thimbles:](#)

Graham Payne (1981) who employed at least six freelance painters
Gerald Delaney

Jasper's of Yorkshire (Margaret and Mandy Palmer)

Francesca employed at least 16 thimble artists and other character head thimbles makers number 20
Royal Worcester thimble painters

I have featured **34** British thimble handpainters.

When I have fewer than five thimble examples from specific painters – they will follow at the end of the section of thimbles - both in alphabetical order by painter's surname.

If the thimble only has the painter's initials, they follow on from this section.

Lastly is a very small section where the handpainted thimble is obviously British from the topic or the shape.

Along the way I have learnt heaps – and I can now recognise thimbles painted by these artists.

It takes sheer talent to paint accurately on such a small area of china.

I hope you will enjoy the journey as much as I have.

For other handpainted thimble topics see

Australian handpainted thimbles and sewing tools 1973-2014
Cornish Enamels thimbles 1995-1997
Francesca character head thimbles
Gerald Delaney handpainted thimbles
Graham Payne handpainted thimbles 1981-1996
Hazrah handpainted bronze thimbles (Mauritius) 2006-2009
Iles' handpainted and decaled plastic thimbles
Jacqui and David Parker of Olivia (Birmingham) thimbles 1983-1996
Jasper's of Yorkshire handpainted thimbles
Merryfield Pottery (Devon) thimbles
Modern British hand-decorated wooden thimbles
Roger Gibbons pewter thimbles 1984-1990
Roger Harrison of Kelso thimbles 1983-1988
Royal Worcester thimble painters
Scottish wooden thimbles

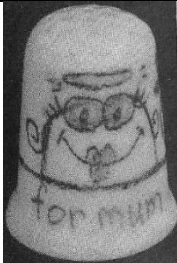
Lorraine Bates

born 1964

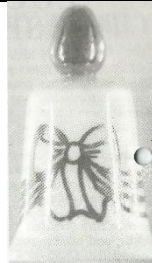
graduate of Bath Academy of Art 1986

daughter of Gill and David Bates of Woodsetton Peeps

set up her own pottery, Woodsetton Arts Pottery, alongside that of the family business
handpaints some of their enamelled brass thimbles



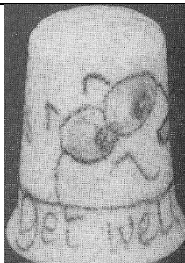
'for Mum'
TTG February 1986
b&w photo



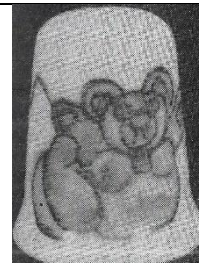
Easter 87
TTG April 1987
b&w photo



elf
TTG June 1987
b&w photo



'Get well soon'
TTG May 1986
b&w photo



Teddy
TTG September 1986
b&w photo

Anne Blades

Blades was born in Port Talbot in 1953, grew up in Guildford and returned to live in Wales in 1968 she studied industrial ceramics and china painting became her passion in 1984 opened her ceramics studio – Anne Blades Ceramics Anne opened her own shop and gallery, Blades – The Artworks in 1997 in Mumbles (Mwmbwls), Swansea in Wales her thimbles are distinctive in that they have a daffodil design pressed into the apex AB with a date letter is her maker's mark on the inside source: <https://www.anneblades.co.uk/about/>



Caswell Bay



Caswell Bay



holly



Ich Dien



Mumbles Lighthouse



Mumbles Train
unsigned



Three Cliffs Gower



Worms Head

David Bowkett

Bowkett was a Royal Worcester trained artist and worked there between 1948-1962

he moved to Cornwall and bought a pub in the 1970s

David opened his own studio in Devon

he began to paint thimbles in 2002

this is where his RW training came to the fore – using birds and fruit themes painted on bone china

these included the signature on the outside and the traditional sprig on the verso

thimbles have the David Bowkett backstamp and his signature is D Bowkett

Bowkett died in 2009

if there is a small china hook on the back of the item – it is a tiny candlesnuffer – they can be mistaken for thimbles. His figurals have indentations on the head



candlesnuffer



R: his mark for character-shaped thimbles





bird - Kingfisher



choirboy - i



choirboy - ii



cricketer



golfer

tho character-shaped, this is not a candlesnuffer
backstamp is slightly different for the character-shaped thimbles
fine bone china



Gigi Branch (1983-1984)

Gigi trained at Limoges in France then settled in Devon
thimbles signed inside Gigi

see also topic Glass and crystal thimbles for her painting on glass thimbles



Christmas 1983
carollers



Christmas 1983
holly leaves
red enamelling on lace-like ground
dated and numbered
limited to **100**



Forget me nots
May 1983
b&w photo



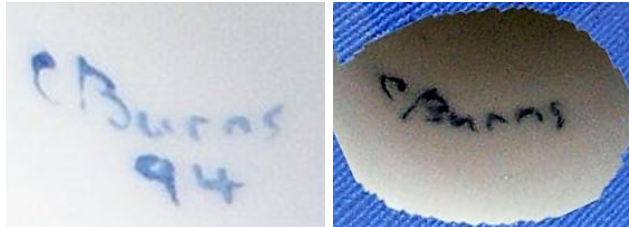
Prince William 1st birthday
21.6.83
royal symbols painted all round



stylised flowers
limited to **150**
August 1984

Christopher Burns (1987-1994, 2005)

Chris Burns is a Royal Worcester trained artist
 in 1987 when RW were no longer producing handpainted thimbles, Burns opened his own studio in the
 Malvern Hills, Worcestershire
 here he established Harcourt China
 before the use of this mark, the thimbles were marked Malvern England
 he provided thimbles to The Thimble Guild. I have used the catalogue dates
 his thimbles are not dated (with one exception in **1994**)
 there is a lovely range of designs capturing the surrounding English countryside. His thimbles evolved to
 sculpt thimbles in relief giving a three dimensional aspect
 thimbles have the Harcourt China backstamp and his signature C Burns is located on the inside
 thimbles are not named – I have used names from the TTG catalogues etc



L: early blue Malvern mark (Type 1) - C: no brand name Handpainted in England (Type 2)

 A stroll thru the woods limited to 200 TTG June 1993	 Autumn fruits TTG November 1990	 Barn owl TTG August 2005	 bee TTG June 1993
 bird of prey pink ground	 bird of prey pink ground	 Blue tit TTG January 1988	
 British garden birds Blue tit TTG October 1987 (set of twelve)	 British garden birds Bullfinch TTG October 1987	 British garden birds Firecrest TTG October 1987	



British garden birds
Goldfinch
TTG October 1987



British garden birds
Robin
TTG October 1987



British garden birds
Sparrow
TTG October 1987



British garden birds
Thrush
TTG October 1987



British garden birds
Wren
TTG October 1987



British garden birds
TTG October 1987



Christmas 1991
TTG December 1991



comet Hale-Bopp



Cottage
TTG October 1998



Cottage
TTG October 1998



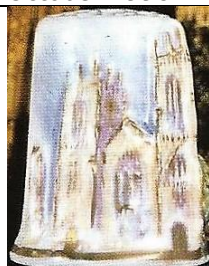
Cottage
TTG October 1998



Cottage
TTG October 1998



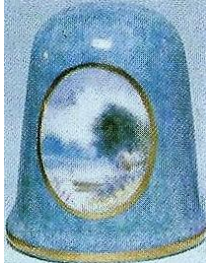
English cathedral
TTG December 1993



English cathedral
limited to **450**
TTG April 1992



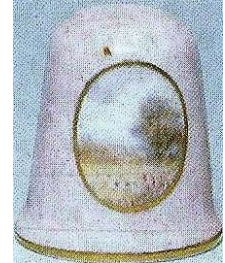
English countryside
set of six on pink ground with cameo scenes
TTG July 1989 - TSL summer 1989



English countryside
blue ground with cameo scene
with tree
TSL summer 1989



English countryside
blue ground with cameo scene



English countryside
pink ground with cameo scene
TSL summer 1989



English countryside
pink ground with cameo scene
Type 2 backstamp



Holly
pink ground with champeved holly
Thimble Society of London winter 1989
limited to **450**
TTG December 1992



Kingfisher with fish
L: type 1 mark



Kingfisher
limited to **200**
TTG June 1988



Ladybird
thimbles have the 1994 dated signature
TTG July 1994



Little owl
limited to **200**
TTG August 1999



Madonna
TTG December 1991



Malvern Hills
1993
panorama scene all round
limited to **375**



Mercat Cross
(street in Wyre Evesham)
limited to **250**
TTG February 1993



Mr and Mrs Owl
TTG July 1992



Peregrine
TTG February 1990



pig
TSL summer 1991



Postbox at Crophorne
(in Evesham)
limited to **375**
1993



robin



robin
pink ground with cameo



Rose cottage
TTG January 1992



Salmon
pink ground
limited to **250**
TTG December 1991



Shepherd's cottage
TTG January 1992



Snowy owl
TTG August 2005



St Paul's Cathedral
limited to **375**
TTG November 1992
TSL spring 1993



Summer Serenity
TTG June 1990



Thatched cottage
TTG January 1992



The lone shepherd
September 1992



Village church
limited to **250**
September 1991



Wren
1987



Windmill
TTG March 1989
TSL autumn 1990



woman shopping

Peter Carver

I first came into contact with Peter Carver from Solihull in West Midlands in 2013 thru a Canadian thimble collector

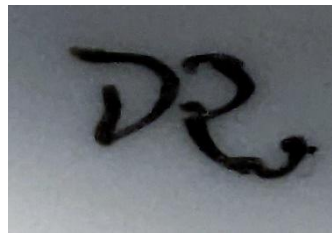
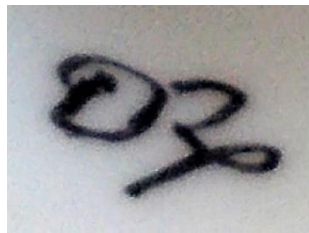
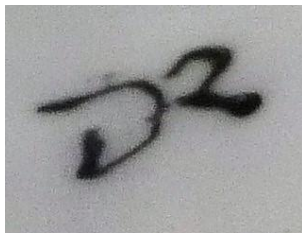
she encouraged Peter to try painting thimbles

Carver's specialty is painting birds – see for yourself his quirky, almost humorous style on his retirement, with interests in professional watercolour painting, furniture restoration and painting enamel boxes amongst many others, with typography and graphic design in his working life, he accepted the challenge

having a kiln, Peter was able to make his own china thimbles – he gilded some of his apices and these are distinctive as the gold only covers the immediate indentations

he experimented with poly clay, which enabled him to try sculpted thimbles

Carver's thimbles are signed PC (but look like DR): you can see for yourself with three examples the thimble names are those of the painter but not lettered within thimble (2013-2014) but thimbles are not dated



Peter also painted on enamel

 <p>Badger</p>	 <p>bird</p>	 <p>Blue tit cutaway to reveal nest inside</p>	 <p>Book at bedtime gold painted apex</p>
 <p>Christmas 2013</p>	 <p>Christmas 2013</p>	 <p>Christmas 2013 'Deck the halls with boughs of holly'</p>	 <p>Christmas 2013</p>



Christmas robin



Cockerel Moon



Corgis – Monte & Ozzie
painted on commission



dolphin



Fox



Hare



Iron Bridge



Leaves and berries



Leaves and berries



London Bridge



Otter/beaver



Owl



Packwood House



Pheasant



Pheasant



poly clay set of six



Rabbits



Robin



Star Dust



Three rabbits



Tower Bridge



William Morris



William Morris



William Morris



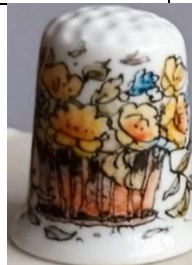
William Morris



William Morris



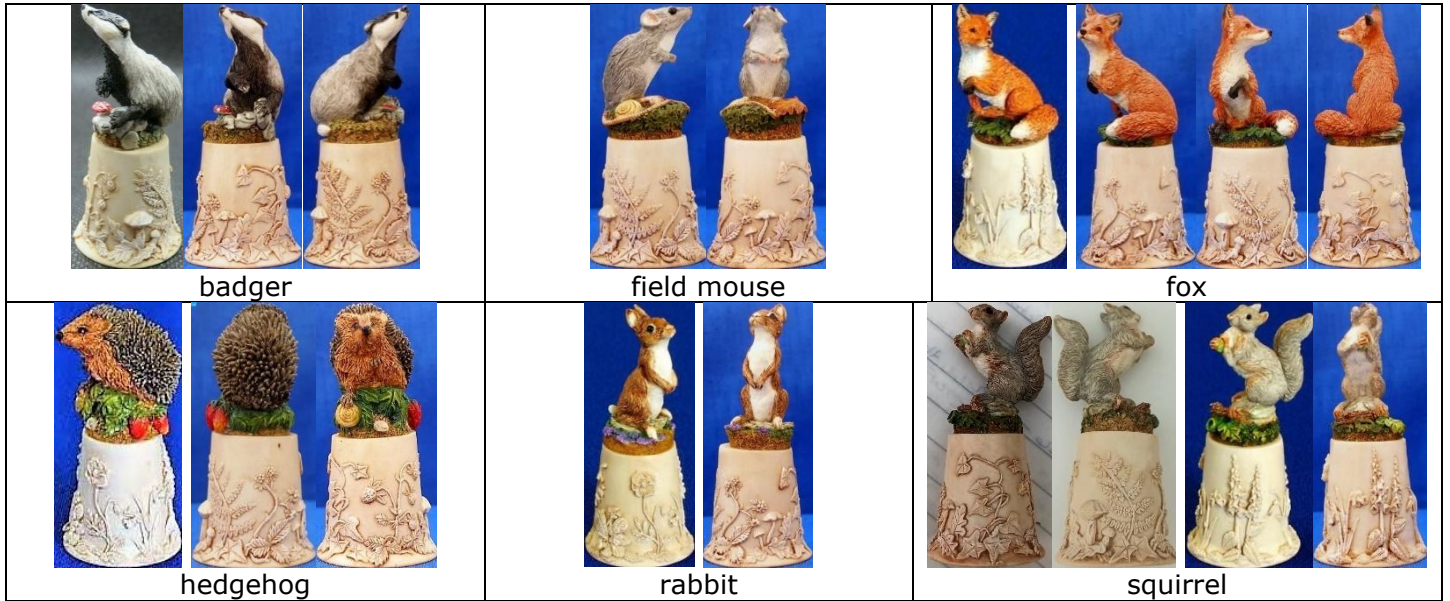
Wren



Country Artists

This set of six Woodland Animals is created of bisque porcelain.

The thimble base has plain bisque woodland flowers or fruits in relief all round – this includes foxgloves, daffodils, bluebells and primroses - brambles, mushrooms and strawberries.



Nigel Creed - Ken Russell (1987-1999)

Creed is a Master Painter and worked at Royal Worcester in 1963

Russell (1934-2010) was Royal Worcester's last Master Gilder

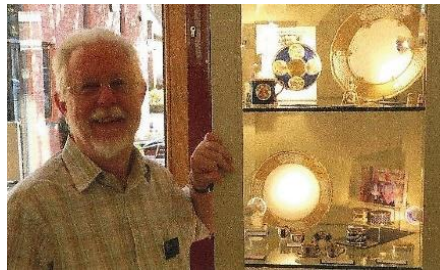
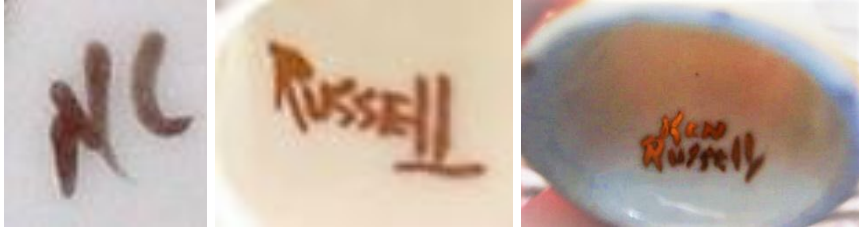
Thimble Society of London commissioned Nigel and Ken to produce handpainted thimbles for sale thru their thimble catalogues

Nigel signed his thimbles with his initials NC on the outside near the painted part

Ken was the gilder and used 24ct gold. Sometimes the apex is gilded. Russell is signed inside

Ken had retired by 2004. He gilded thimbles for other thimble painters

names used are purely descriptive, not being named by the painters – thimbles are not dated
Royal Worcester collectors will recognise many of these designs as those that came from the factory, given a modern look



Ken Russell 2010



Creed also painted on enamel

 <p>Apple blossom TSL autumn 1993</p>	 <p>Baltimore oriole TSL spring 1994</p>
 <p>Blackburnia bunting TSL winter 1994</p>	 <p>Blue bird TSL autumn 1993</p>



Blue tit
limited to **50**



butterfly



butterfly
TSL winter 1992



butterfly



Cactus wren
TSL winter 1993



Cherokee rose
TSL spring 1994



Christmas
TSL autumn 1990



Chrysanthemum
TSL autumn 1990



Cockerel
TSL summer 1991



Crocus
TSL summer 1991



Daffodil
limited to 50



freesias?



Gold flower
TSL summer 1999



Gold



Gold



Gold
signed Ken Russell



Gold jewels swags
shell pink ground
TSL autumn 1996



Goldcrest
TSL spring 1993



Goldfinch
L: TSL autumn 1990



Imari
TSL autumn 1989



jewelled
TSL spring 1996



jewelled
in panels



jewelled
TSL summer 1996



jewelled



jewelled



jewelled



jewelled



jewelled
TSL winter 1989



jewelled



jewelled



jewelled



Jewels with coral
TSL autumn 1989



Kingfisher
TSL spring 1990



Larch spray
TSL winter 1994



Lattice



Lattice gold
black & white panels
TSL summer 1996



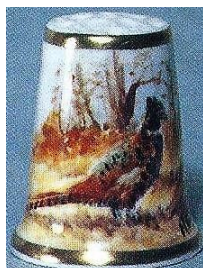
Lattice gold on white
TSL summer 1999



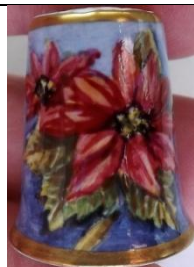
Owl
TSL autumn 1995



Peacock butterfly
limited to **100**
TSL summer 1992



Pheasant
TSL autumn 1991



Poinsettia
TSL autumn 1991



primrose



Ptarmigan
TSL winter 1991



purple flower



Robin
limited to **50**
TSL winter 1989



Rose
TSL spring 1990



Rose
TSL winter 1991



Ruby jewelled
limited to **100**
with TSL mark for Thimble Society of London
TSL summer 1987



Snowdrop
limited to **50**
TSL winter 1989



Thistle
limited to **100**
TSL summer 1992



Tulip
TSL spring 1992



Turquoise jewelled
limited to **100**
TSL summer 1987



Turquoise jewelled
TSL summer 1999



Turquoise jewelling
TSL winter 1989



Turquoise jewels
TSL autumn 1996



Wild lupin
TSL spring 1994



Woodcock
TSL spring 1992



Wren
TSL autumn 1990



yellow flower



yellow flower
TSL spring 1992
rhododendron?



Janice Daughters (1991-1997)

Daughters is an artist in Leyburn, Wensleydale North Yorkshire trained in graphic design, Janice moved from London to set up her studio in 1986, where she was able to freelance in graphic design she had developed a love for the countryside, with its flora and fauna as an added interest, she began to paint on porcelain and china, including thimbles her signature details are on the inside rim and the date is included



apples



cottage



Duckling
1991



Duckling
1992



Duckling
1997



Flower garden
1992



Harvest mouse



Poppies



Sheep in Dales
1991



Sheep in Dales

Robert Earwicker (1984-1997)

China Cottage, Cornwall

his characters and buildings are made of Cornish clay - quirky. The characters rarely have facial features. In June 1984 issue of the TTG, Bryn was first named as Eric. Earwicker's thimbles often have colourways, probably changed to at a later date. In 1990 Robert introduced thimble holders of clay to display his various thimbles.

TTG sold all these thimbles.



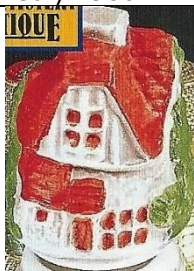
'1599 Defeat of the Armada'
limited to **1000**
July 1986



Abbey House
October 1985



Alpine church
April 1995



antique shop
July 1995



badger
April 1988 - February 1992*
*limited to **150**



bell ringer
January 1989



Cambridgeshire cottage
July 1992



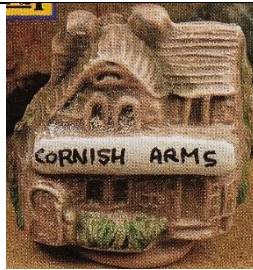
castle
September 1993



chestnut seller
July 1994



corner shop
May 1995



'Cornish Arms'
can be personalised
December 1995



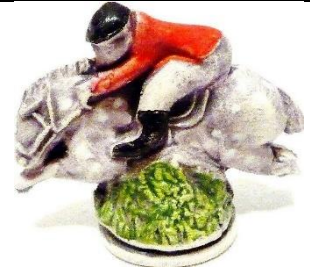
church



'Columbus 1492'
May 1992



Cornish engine house
June 1987



Derby Day
June 1989



dairy
December 1989



doll



Elizabethan cottage
September 1984
b&w photo



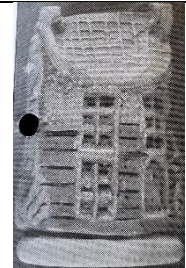
fisherman's cottage
January 1984



frog
March 1988



gabled house
September 1986



Georgian house
September 1996
b&w photo



'Guy Fawkes'
October 1988 - October 1991



'GWR 1835-1985'
March 1985



Haunted house
January 1986



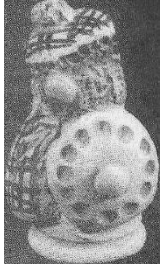
hedgehog
January 1997 - April 1993



Highland castle
November 1986



Highland woman
May 1986
b&w photo



Highlander
March 1986
b&w photo



holiday cottage
May 1996



horse



hot air balloon
September 1992



house



Humpty Dumpty
November 1993



Kentish house
August 1995



knight
May 1988



leprechaun



lighthouse
February 1992



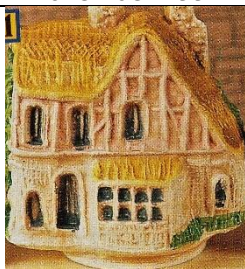
Little Maplestead Round Church
Essex
November 1994



Little Red Riding Hood
April 1994



lodge house
February 1986



manor house
January 1995



milkmaid
March 1989



monk
January 1988 - April 1996



motorbike
July 1994



mushroom house
February 1985



mushroom house
March 1991



Musketeer
July 1989



Nobody Inn
November 1992



Norman church
September 1985 - May 1997



nurse
February 1989



oast house
May 1995



owl
February 1987



pig with piglets
March 1987 - October 1992



'Post Office'
February 1994



pirate
July 1986 - May 1989 - August 1991



post-box
October 1993



red-tiled house



regency house
October 1989



Robin Hood
August 1988



round house



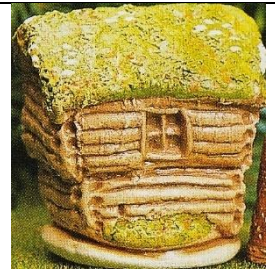
round house



santa



santa
November 1989



santa's home
November 1996



santa's house
November 1985



scarecrow
February 1988



Sir Lancelot
June 1988



Snowman
'1984'
November 1984



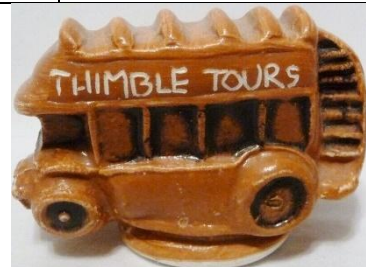
teddy bear
blue bow - pink bow
December 1988



thatched house
June 1984



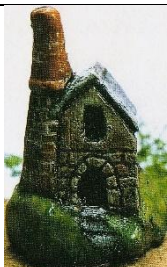
The old woman who lived
in a shoe



'Thimble Tours'
April 1992



'Thimble Guild'
December 1991 - August 1993



tin mine
March 1997



Tour de France
September 1994



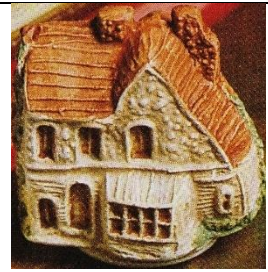
town house
January 1984
b&w photo



tram
January 1993



Truro Cathedral
July 1987



vicarage
July 1993



windmill
June 1986 - March 1990 - May 1993 - August 1996



Wimpey house
February 1996



witch
October 1994
limited to **250**



woman shopping with child



woman with dog



woman with pram



holder: city street



holder: garden party with unpainted figures
July 1991



holder: house



holder: train station with train
limited to **50**
February 1993



holder: village
October 1990

Raymond Everill (1988-1989)

Everill works out of Lime House Studio in Staffordshire, since he retired from Spode his trade mark is Raymond Everill & Sons England you can't mistake his bright pink signature R.Everill thimbles are not named – some are dated (1988-1989) the apex is painted with 22ct gold



bird
1989



blackberry
1988



blackberries and cherries



bullfinch
1988



cherries



cherries



goldfinch



grapes with cherries
1989



grapes



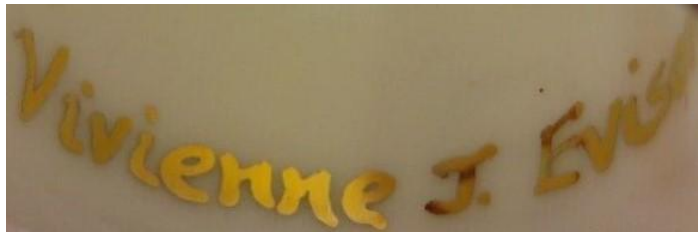
plums



summer meadow
1989

Vivienne J Evison (1992-1997)

Evison runs Lyme Studio in Cheshire with her husband Paul (she was first identified by TTG as Christine)
 her thimbles are of fine bone china finished in 22-24ct gold
 many of her thimbles are painted using precious metals – no two are ever the same
 signed Vivienne J Everill or V.J.E



After Lowry
TTG June 1996



Earl's golden coronet
TTG September 1995



Lightning
TTG December 1996



Peacock feather

set in precious metals lustre
 showing 6 of 7
 TTG December 1992



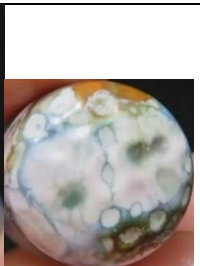
'Amber'



'Garnet'



Malachite



Petrol



'Rose'



'Ruby'



Weights
1/2 lb Mushrooms ...
TTG October 1995



Weights
1/4 lb Tea 125grams (0.275)
TTG October 1995



Weights
1 lb Tomatoes 1/2 kilo (1.1...)
TTG October 1995



Weights
1 oz chillies ...
TTG October 1995



Weights
5 lbs Potatoes ...
TTG October 1995



gold painted apex

Helen Halloran

Halloran worked for Royal Worcester, Halcyon Days and Elliot Hall Enamels
her bone china thimbles are one-off pieces
apexes are painted with 24ct gold
these six flower thimbles are from 2022
not signed



Campion



Celandine



Cherry blossom



Primrose



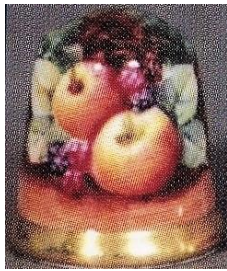
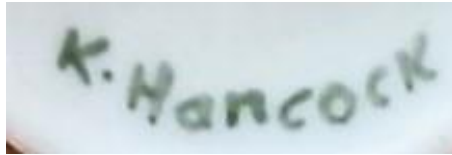
Speedwell



Violets

Keith Hancock (1983)

Hancock worked for Sutherland in Stoke-on-Trent and Caverswall, handpainting thimbles for their brand these are not decaled as the bulk of the Sutherland and Caverswall thimbles were they are all signed – and numbered inside when they are limited in number
The Thimble Guild commissioned two sets of thimbles from Hancock signature is K. Hancock or Keith Hancock. The black signature is signed inside



apples
also available with Swarovski crystal apex



apples
Caverswall



Autumn vale (Four seasons)
limited to **200**
TTG September 1983



Autumn – reaping
1983



blackberries
Caverswall



blue tit
Swarovski crystal in apex



daisies
Swarovski crystal in apex



flowers
green Swarovski crystal in apex



flowers



Robin
red Swarovski crystal in apex



Romany art
TTG summer 1983
b&w photo



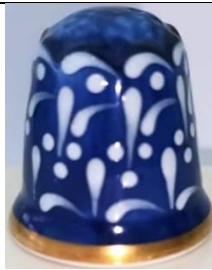
Romany art
green with handpainted enamel
limited to **200**
TTG September 1983



Romany art
maroon with handpainted enamel
limited to **200**
TTG March 1983



Romany art
pink with handpainted enamel
limited to **200**
TTG May 1983



Romany art
blue with handpainted enamel
limited to **200**
TTG July 1983



Spring vale (Four seasons)
limited to **200**
TTG April 1983



Summer vale (Four seasons)
limited to **200**
TTG July 1983



The red dragon
more gilding than the TCC Red dragon
issue
limited to **1000**
TTG December 1983



Winter vale (Four seasons)
limited to **200**
TTG February 1983



Meissen style – cobalt ground with two different
cameo scenes



Meissen style – terracotta ground with two
different cameo scenes

Agneta Hickley (1988-1992)

Rimpton Yeovil

her thimbles all have a scalloped gold-painted rim

Hickley's thimbles have painting all round – except her bird thimbles



Blue butterflies
1988



Country cottage
1988



Goldfinch



Hedgehogs
1988



Kingfisher
1988



Kingfisher
1992



Pink flowers
1988



Red butterflies
1989



Robin
1989

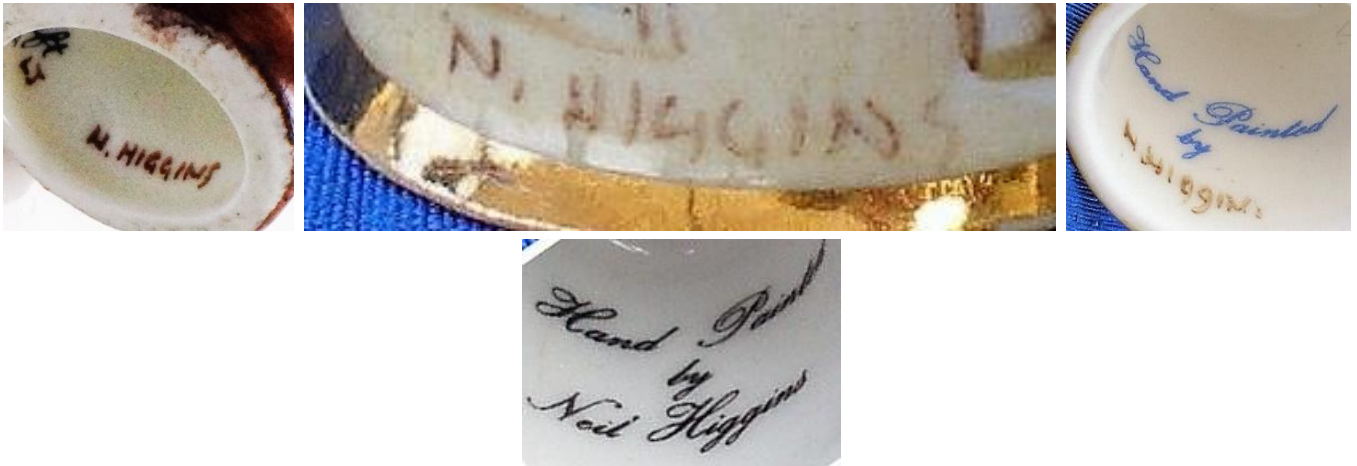
Neil Higgins (1983-1985)

Higgins first came to my attention as the handpainter of the Robin Hood set of six character head thimbles, with the brand name Healacraft, using the initials of NH inside the thimbles his name has also been associated with Sutherland. I speculate that's where he learnt his skills as a handpainter of thimbles?

Neil's signature of N. Higgins is always lettered in brown in his thimbles and may be found lettered on either the inside or outside

thimbles are not dated. He painted thimbles for a short period, Higgins often uses a blue wash as the ground for his painting

Higgins undertook commissions thru The Thimble Guild – including a few of pets he subsequently painted for Staffordshire Enamels (1995)



'1903 Georges Richard'
ltd to **10**
TTG July 1983



'1909 Humber'



'Alpha Romeo 8C - 2300'



'Anne Hathaway's Cottage'



bird



bird

his birds are not named so for an Australian unfamiliar with British birds ... they are named bird



bird



bird



bird



Blue tit



'Bridge House Ambleside'



'Bronte House'
TTG September 1984



building (name illegible)



butterfly



'Carillion Loughborough'



'Chichester'
(Yarn Market)



choristers
with attached pendant loop
limited to **250**
TTG November 1983
b&w photo



cottage



'Derby Cathedral'



'Gloucester Old Spot'



King Charles spaniel



Kingfisher



Labrador



Lapwing



'Pershore'
pink wash



'Portland ram'



'Rippon Cathedral'



'Shakespeare's birthplace'



snowman
with attached pendant loop
limited to **250**
TTG November 1983
b&w photo



snowman



Springer spaniel
TTG November 1983



'The Bell Tower'
The Thimble Guild commissioned this thimble of the building where their thimble business was housed
TTG June 1983



'The Orchards'



'Thimble Hall'



'Wells'

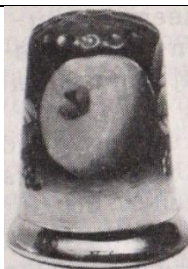


'Womborne Church'

Bruce Higham (BH) (1988-1989)

Higham is a ex-Coalport and Staffordshire Enamels (1995) painter
Worcester-based

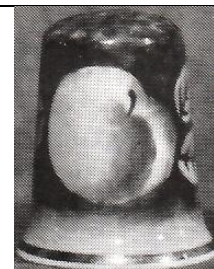
heavily painted gold apices and thick gold painted rims
some seem to have pale lettering on the cream ground



apple
1988
pale green apple on green ground
b&w photo



apple



apple
1989
b&w photo



blossom



cherry



dragonfly

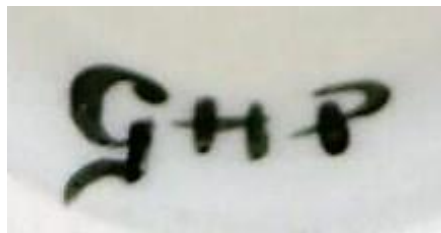


pear

Griselda Hill

Wemyss Ware was founded in 1882 in Fife Scotland. It took its name from a nearby Castle in the 1920s the studio moved to Devon – it closed in 1957 in 1985 Griselda revived the Wemyss Ware® style handpainting to their style at her The Griselda Hill Pottery Ltd® in Kirkcaldy, Fife the most recognisable style has a rim of painted blue scallop - signed inside GHP <https://wemyssware.co.uk>

thimbles are still produced but currently out of stock. They may be ordered



Hill at L



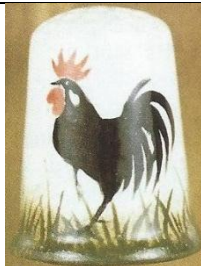
beehive



cats



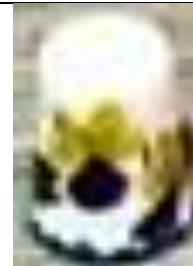
cherries



cockerel



cockerel hen



daffodil



dragonflies



flower



flower



flower



flower



flower



flower



flower



flower



lemon



orange



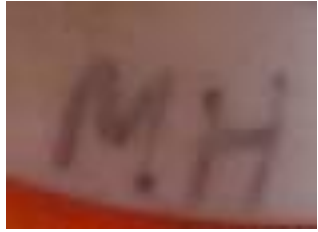
plums



violet

Milwyn Holloway (1987)

Holloway (b.1940) is a Royal Worcester trained artist (1954-1971)
 there he specialised in painting birds
 most of Milwyn's thimbles since then have no inner markings
 some examples have a generic backstamp
 the thimble backstamp used is for Claymore Ceramics
 Milwyn's bird thimbles are always signed MH near the bird
 thimbles are not dated, nor are the birds named





Kingfisher
not in birds' set of 12



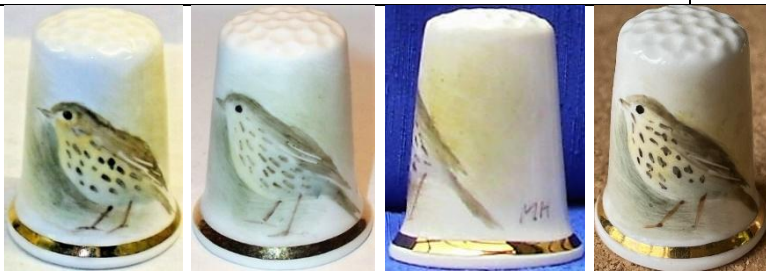
Magpie



Nuthatch



Robin



Song thrush



Woodpecker
not in birds' set of 12



Wren



Yellowhammer



not in birds' set of 12



not in birds' set of 12

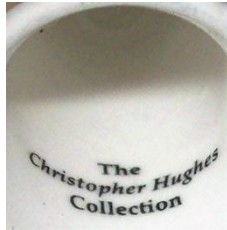


Highland cow

Christopher Hughes (2003-2005)

Hughes (born 1948) began his apprenticeship with Royal Worcester in 1960 and branched out on his own in January 1980

he has a studio in Holly Green Worcestershire where he painted thimbles from 1987
 the backstamp inside the thimble is The Christopher Hughes Collection or Christopher Hughes (later)
 his thimbles are signed Christopher Hughes on the outer rim
 thimble apices are completely gilded, and sometimes they join the upper gilt line – he uses a thicker rim of gilding than other British painters. All are painted on fine bone china
 thimbles are painted all round even if the verso is just a pale matching wash
 thimbles are not named, nor dated



apple				
Barn owl TTG August 2005	Bird of prey	Blue tit		
Butterfly	Butterfly	Butterfly		
Butterfly	Butterfly with and without gold apex		Chrysanthemum	



Church



Common Blue butterfly
with and without gold apex



Daffodil



Finch



Fuchsia



Harebell



Grouse
R: no gold apex with birds positioned differently
TTG April 2003



Highland cattle
with and without gold apex
L: TTG April 2003



Highland stag
with and without gold apex



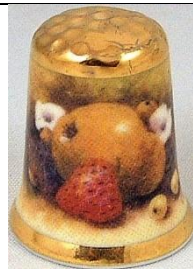
Hollyhock



Kingfisher



Little owl
September 2005



Pear with strawberry



Red plum



Peregrine falcon
TTG September 2005



Pheasants
with and without gold apex
TTG April 2003



Robin



Rose



Sheep
with and without gold apex



Snowy owl
with and without gold apex



Sparrow



White plum








Wren

Julie Menzies (1993-2016)

Menzies grew up the Biggar area in the lowlands of Scotland
 she was never formally trained in art tho painting was a passionate hobby
 Julie worked in the despatch section of The Thimble Guild (TTG) in Biggar until the owner, Arthur Bell,
 discovered her artistic abilities
 she began to handpaint thimbles commissioned and personalised by thimble collectors thru TTG – painting
 their pets, homes, gardens etc
 she specialises in portraits and for five years Menzies was the TGG’s chief thimble artist
 she became their chief designer of art in 1998-2005, which required her to create thimble designs
 these were translated into lithographs or transfers/decals
 tho her thimbles seem to be handpainted, all Menzies thimbles after 1998 are decaled thimbles
 handpainted portraits fill the entire front of thimble – her decal thimble portraits are more cameo sized
 her handpainted thimbles bear the signatures J.M., Julie. M. or Julie Menzies on fine bone china
 with 22ct gold rims
 Menzies can handpaint three thimbles a day – no wonder they were offered in limited editions
 some thimbles will have the backstamp The Thimble Guild
 Julie was also a designer for Sutherland China
 Julie also painted wooden thimbles



Menzies January 1991 and 1999

 <p>90th anniversary 1921–2011 lettered in gold Royal British Legion limited to 250 - ed lettered om verso TTG November 2011</p>	 <p>Alexander Graham Bell limited to 100 TTG March 1997</p>	 <p>Art deco Fruit TTG August 1999</p>
 <p>Art deco Geometric TTG September 1999</p>	 <p>Art deco House on a hill six-sided TTG June 1999</p>	 <p>Art deco turret-shaped apex TTG July 1999</p>



Art deco
TTG October 1999



Best wishes New Year 2005
TTG December 1994



Billy Wright
limited to **200**
TTG October 1994



Burt Lancaster
TTG December 1994



Caernarvon Castle
favourite ship could be personalised
TTG February 1998



children's portraits
portraits could be personalised
TTG October 1993



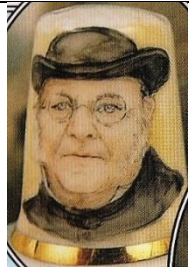
Clydesdale
limited to **250**
TTG March 1997



Colin Macrae (rally driver)
limited to **250**
TTG January 1996



Cross
limited to **200**
TTG March 1994



Donald Pleasance
limited to **100**
TTG March 1995



Doris Speed
TTG December 1994



dream home
your home could be personalised
TTG August 1996



E & S (Edward and Sophie)
19.6.99
there is also a decal version



Fred Perry
limited to **100**
TTG March 1995



garden
your garden could be personalised
TTG April 1994



'Hale Bopp 1997'



'Hale Bopp 1997'

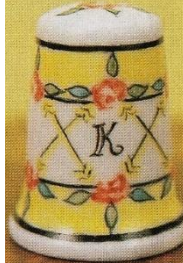
L: first edition which has more detail - limited to 250
 R: city scene - lower: country scene
 two unlimited editions with less detail
 TTG May 1997



Henry VIII
 limited to **75**
 TTG February 1997



Jose Carreras
 commissioned by the singer who is a thimble collector
 TTG May 1994

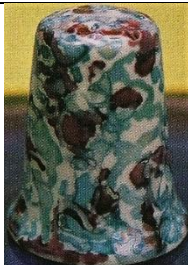


initials

Menzies follows 18th century French designs
 your initials could be commissioned
 limited to **175**
 TTG July 1993



Lustreware



Lustreware
 TTG March 1997



Lustreware
 TTG September 1999



Lustreware
 TTG September 1999



Lustreware
December 1999



Meadow flowers
limited to **100**
October 1996



Neil Armstrong
limited to **150**
September 1994



Montserrat Volcano 1997



North Sea oil
Swarovski crystal in apex
limited to **250**
TTG December 1994



Peace and goodwill
limited to **125**
TTG December 1995



Peace in Northern Ireland
limited to **150**
TTG March 1995



pet
your favourite pet could be
personalised



Queen Elizabeth II 70th birthday
19.4.96
TTG April 1996



Queen Elizabeth II 80 years
21.4.2006



Queen Elizabeth II 85th birthday
19.4.2011
limited to **85**
TTG April 2011



Queen Elizabeth II and Prince Philip
60 years 1947-2007



Queen Elizabeth the
Queen Mother 95th
birthday
Swarovski crystal in apex
limited to **350**
TTG August 1995



Rose
TTG April 1997



Roy Castle
limited to **250**
TTG October 1994



Sam
symbol of the koalas injured in Victorian 2009
bushfires



Scenes of Jubilation 50 years
limited to **500**
TTG April 1995



Snowflake
spot of gold paint in each flake
limited to **150**
TTG January 1997



Soufreire Hills Volcano
Montserrat
TTG October 1997



Strawberry
limited to **20**
TTG August 2016



Teddy bear
baby's name can be personalised
TTG December 2009



The Golden Hind
limited to **450**
TTG March 1996



The Longest Day 50 years
limited to **250**
TTG May 1994



The night before Christmas
TTG November 1996



To a mouse
(after Robbie Burns)
limited to **149**
TTG January 1994



Toy train
baby's name can be personalised
TTG December 2009



UFO
limited to **450**
TTG May 1998



Viva Espana!
limited to **75**
TTG July 1994



West Highland Terrier
favourite pet can be personalised
TTG March 1998



Xmas 1999
pontilist style
TTG November 1999



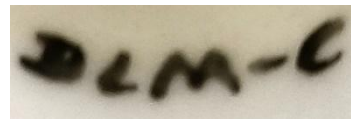
William & Kate 29th April 2011
golden lovebirds
TTG April 2011

Dorothy Mortimer-Coy (DLM-C)

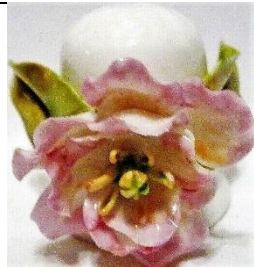
Flowercraft
Sponden Derby

former Royal Crown Derby artist

her thimbles are signed inside – further information is on a sticker on base of thimble box



Anemone



Apple blossom



Blackberries
TTG August 1987



Blue poppy



Buttercup



Crab apple blossom



Daffodil
TTG March 1987



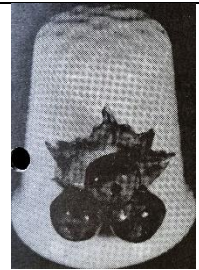
Dog rose
TTG July 1987



Easter lily



Forget-me-nots
TTG June 1986



Holly
TTG December 1986
b&w photo



Narcissus



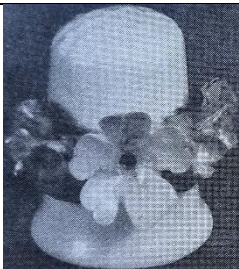
pink



pink and white



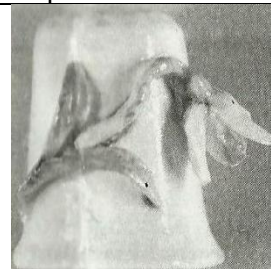
pink rose



Primrose
TTG July 1986
b&w photo



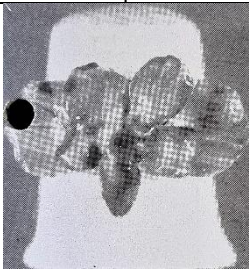
Scabiosa



Snowdrop
TTG March 1987
b&w photo



Vinca



Violet
TTG April 1987
b&w photo



Violet ?



Violets



yellow rose



Wild rose
TTG May 1986

Peter Platt (1991-1992)

Platt (born 1935) was commissioned by The Thimble Society of London to paint thimbles in 1990s for sale thru their catalogues

he is Royal Worcester trained (from 1951)

Peter's thimbles, once he left RW, are uniquely his own: plenty of gilding and the subjects are set in an ornate cameo

signature is P Platt which can usually be found in the lowest part of the cameo



<p>EIIR 1952 - 1992 gilded by Russell commissioned by TSL</p>	<p>Flowers gilded by Russell</p>	<p>flowers</p>
<p>Fruit - apples TSL summer 1991</p>	<p>Fruit - apples</p>	<p>Fruit - apples TSL summer 1992</p>
<p>Kingfisher gilded by Russell</p>		

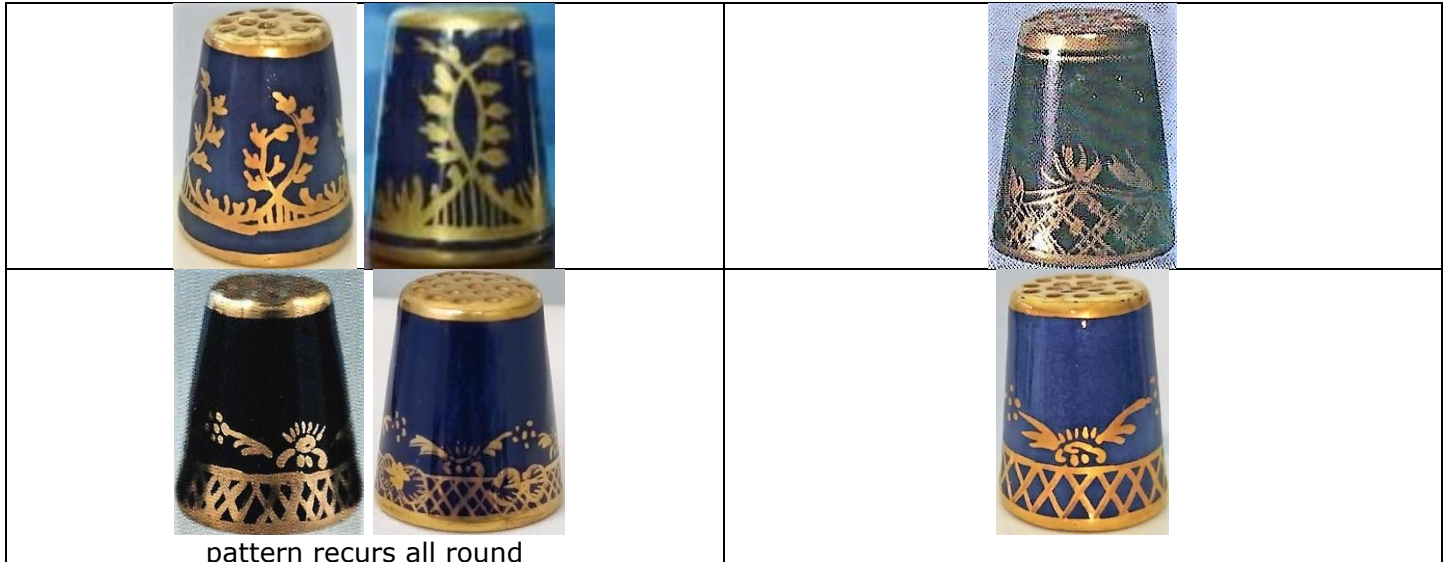
Ryoko Ottignon (1978)

Ryoko's studio - Ottignons of Norfolk – is in Starston where she is the hand decorator and ceramist
 Ottignon's thimbles are based on copies of Georgian designs from 1780s – designs found on cups and saucers of Lowestoft (1757-1802) and New Hall (1781-1835) porcelain factories
 maker's mark in the form of a sandglass ii burnished gold is painted on the inside
 (it may look like the Roman numeral for ten when the dot isn't clear)

her thimbles require five firings to fix the colours and glaze on the cream porcelain

thimbles are presented in thimble boxes handturned in mahogany and waxed to give an antique patina
 accompanied by a signed, dated and numbered certificate – the list of what else Ottignons retails is listed
 on the verso of each certificate

the glaze has crazed with age on her white thimbles



R: certificate 1978
 see also: white version





R: certificate October 1978



Ladybird

R: certificate July 1978

morning glory

Rachel Pugh (2000-2004)

Pugh handpainted bone china thimbles for The Thimble Guild from September 2000 she was also a designer at TTG from 2000-2005 where her art was translated into decals Pugh was born in Cumbria. She lives in Cyprus where she still designed thimbles for TTG

Rachel's signature R.Pugh is on the inside of the thimble, often using gold paint if the thimble is named, it is lettered inside. In some instances The Thimble Guild backstamp is present.



Ambergate daffodil
gold apex
TTG April 2002



Armistice poppy
gold apex
TTG November 2001



'Armistice'
TTG November 2000



'Autumn'
TTG October 2000



Christmas rose
TTG December 2000



Cyclamen
gold apex
TTG October 2002



'Daisy field'
TTG June 2001



Deck chair
raised paint
TTG August 2004



Dove of peace
textured paint
TTG June 2003



Early snowdrop
raised paint
TTG January 2001



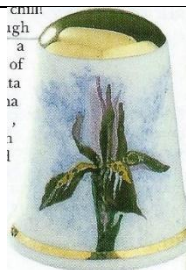
Exploring Mars
Swarovski crystal in apex
TTG April 2004



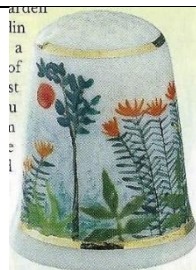
Frosty snowman
raised matt glaze
TTG December 2004



Giraffe
raised patterning
TTG October 2003



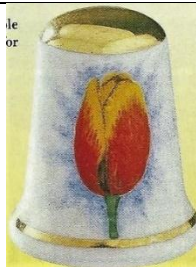
Iris reticulata
gold apex
TTG February 2002



Jungle Flowers
after Henri Rousseau
TTG August 2001



Leopard
raised spots
TTG December 2003



Keiserskroon tulip
gold apex
TTG May 2002



Lily
gold apex
TTG September 2002



Mars
Swarovski in apex



Moorcroft style
raised design
TTG May 2004



'Peace on earth'
suede glaze to create sandy surface
TTG November 2003



Peacock feathers
TTG April 2004



Poinsettia
gold apex
TTG December 2002



'Poppies at Argenteuil'
limited to **50**
TTG June 2004



Purple pansy
gold apex
TTG March 2002



Rose
gold apex
TTG June 2002



Snowdrop
gold apex
TTG January 2002



Springtime
TTG April 2001



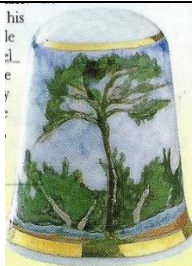
Sunflower
gold apex
TTG August 2002



Sweetpea
gold apex
TTG July 2002



Summer
TTG September 2000



The Great Pine after Cezanne
TTG October 2001



The Lily Pond
after Monet
date next to signature
TTG July 2001



'Thimble' in Braille
in raised writing
TTG June 2003



Tiger
raised painted stripes
TTG September 2003



Tropical fish
TTG September 2004



Valentine
TTG January 2004



Van Gogh
TTG August 2001



Winter snowflake
white glaze
TTG January 2003



Winter wonderland
raised matt glaze
TTG December 2003



Wintertime
TTG February 2001



Yellow freesia
gold apex
TTG November 2002



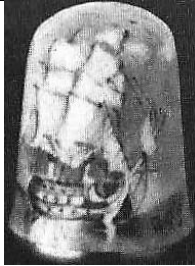
Zebra
raised painted stripes
TTG November 2003

Roger Shufflebotham (R.A.S.) (1883)

Shufflebotham was an early painter for Caverswall
he is known as a marine artist
his thimbles are signed R.A.S.



fruit



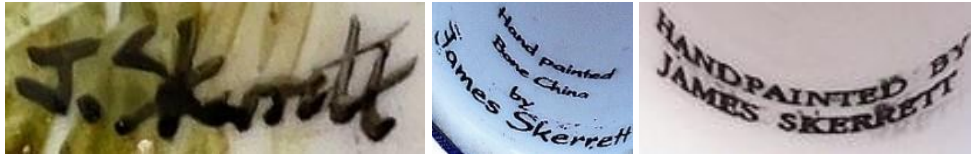
H.M.S Victory
limited to **40**
TTG June 1983
b&w photo



Thames barges
limited to **40**
TTG April 1983

James Skerrett (JS) (2012)

Skerrett trained at Royal Worcester
 in 2012 he was the artist-in-residence at the Worcester Porcelain Museum
 James's J Skerrett signature is found on the outside. Earlier thimbles signed JS
 there are several varieties of decal marks inside Skerrett thimbles



Autumn fruits
 TTG September 2012



Christmas roses
 with hedgerow berries
 TTG December 2012



Remembrance poppy
 with cornflowers and marguerites
 TTG October 2012



bird



fruit
signed 'JS'



hedgehog



roses

Ann Taylor (1992-1993)

Scotland
signed A Taylor



Brig o' Turk
limited to **99**
TTG July 1992



Chinese male character
limited to **100**
TTG April 1992



Chinese man serenading woman
limited to **100**
TTG April 1992



Choirboy
limited to **245**
TTG November 1992



Dragon
limited to **100**
TTG April 1992



Sewing
limited to **150**
TTG July 1993

Trude Crafts (1992)

Penmaenmaer, Wales

I have seen some of her thimbles that are decaled



'Blue tit'
1992



'Chiffchaff'



'Green woodpecker'



'Grey wagtail'



'Robin'



'Siskin'



'Song thrush'



'Conwy Castle Conwy'



Fragonard style in a matching thimble box



Fragonard style

Bryn Weightman (1986-2003)

Gwahaniaeth Crafts, Wales

Weightman with his wife Doris creates these bone china thimbles mainly as figures. Some are of polymer clay moulded over metal thimbles. This clay is used for embellishments

Thimbles which were modelled with no handpainting are not included

TTG had all these thimbles for sale

signed Bryn (TTG in March 1987 named him as Bryan ...)



Beaver scout



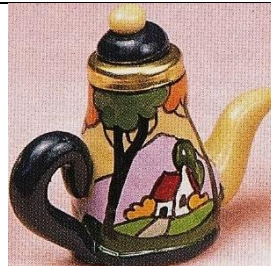
'Brownie'



Brownie



chef
December 1995



coffee pot
design style of Clarice Clift
over metal
limited to **250**
August 1996



coffee pot
cottage shape
over metal



cottage
TTG June 1986



crusader
February 1987
b&w photo



dolphin
May 1998



Friar Tuck
April 1995



Friar Tuck
April 1986



Girl Guide



Girl Guide



Girl Guide
'Chapel'
January 1993



Grandma
January 1994



gypsy



Highland cow
March 1992



'HMS Thimble'
May 1994



kettle
barge painting
over metal
March 1991



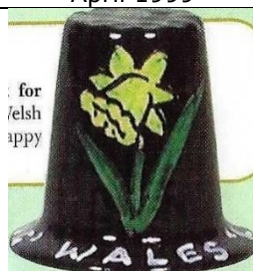
kettle
'Bless this house'
over metal
April 1999



kettle
'Home is where the heart is'
over metal



kettle
over metal



'Land of song Wales'
February 2003



Liverpool
June 1987



Manchester City



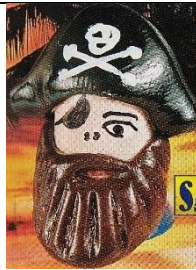
Manchester United
December 1998



Matroska
February 1986



pig reading



Pirate
limited to **250**
over metal
January 1998



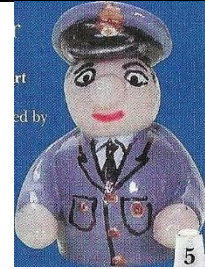
pitcher jug
design style of Clarice Clift
over metal
limited to **250**
July 2007



policeman



professor
limited to **250**
over metal
August 1998



RAF officer
85th anniversary
August 2004



Robin Hood
January 1990



sailor



santa
L: November 1986



santa's helper
October 1993



'school'
in memory of Dunblane school
March 1996



scout



scout



'1897 Sherlock Holmes 1987'
March 1987
b&w photo



snowman



teapot
over metal
design style of Clarice Clift
limited to **250**
February 1996



teapot
over metal
design style of Clarice Clift
limited to **250**
February 1996



teapot
cottage
over metal
February 2002



teapot
over metal



teapot
cottage
over metal
May 2005



Teapot
'Home sweet home'
over metal
April 1993



teapot
over metal



teapot
barge painting
over metal



teapot
over metal



teapot
over metal



teapot
blackberries
over metal



teapot
over metal



teapot
strawberries
over metal



teapot
strawberries
over metal



'The Bra 1907-2007'
over metal
July 2007



'The Thimble Shop'
May 1995



'Trefoil Guide'



Venture scout



Viking
over metal
January 1996



Welsh guard



Welsh woman
November 2005



wizard
glittery
over metal
August 1989



woman with necklace



Wolf cub
July 1989

Sheila Whitcombe (1988-2005)

Whitcombe (nee Watson) began painting portraits at 16
she became a modeller for Royal Worcester, so never painted thimbles for them

Sheila paints under the name of Dunheved from Cornwall
signed S Whitcombe on the front of bone china thimbles – sometimes inside, in lower case

Dunheved thimbles are unusually large measuring 30-35cm in height

this gives the artist a larger surface to paint

she needed specialised knowledge of ceramic oxides to paint her historical figures with their jewel colours

the name is lettered on the outside verso

Sheila's painting may creep onto the apex to complete the picture

her artwork is quite pale – the colours here are stronger for clearer pictures



Armada 400th
anniversary 1588-
1988



Charles I
TTG October 1994



cheetah



Chevaliers Gardes Officer 1796



Chopin 1810-49



Cornflowers
with Spring peas
TTG April 2001



Cornish piskey
limited to **84**



Devon



dog



First Fleet
departure 1787
set of twelve painted for Australia's
bicentenary 1988



First Fleet
departure 1787



First Fleet
departure 1787



First Fleet
departure 1787



First Fleet
Tenerife 1787



First Fleet
Rio de Janeiro 1787



First Fleet
Cape of Good Hope 1787



First Fleet
arrival 1788



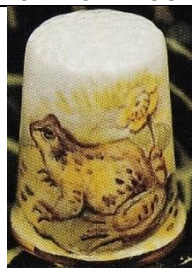
First Fleet
arrival 1788



First Fleet
arrival 1788



First Fleet
arrival 1788



Frog
TTG March 1993



Fruit – berries
TTG May 2005



Goose



Goose



Harebell
with Venus Looking Glass
TTG August 2001



Henry VIII
TTG February 1992



Ladybird
with dog rose



lion



Lorna Doone farm



Padstow



Pansy flower fairy



Polperro



Poppy flower fairy



Queen Elizabeth I
limited to **90**
TTG June 1996



Queen Elizabeth II 1993
TTG May 1993



Queen Mother



Queen Mother



Queen of the Meadow flower fairy



Queen Victoria
limited to **350**
TTG November 1992



Rabbit



Rabbit



Reindeer
Christmas 1988



Richard III
TTG March 1992



Roses



Roses & forget-me-nots
TTG July 2002



Sir Francis Drake



Strawberry flower fairy



Snowdrop flower fairy



terrier



The Cobb Lyme Regis



Thrift flower fairy



Unicorn



Weston Super Mare



Derek Wilson (1983-2011)

Wilson is a Royal Worcester trained artist, 1930-1954

he paints under the name of Dunheved from Cornwall, in his studio near Launceston signed D Wilson, often cleverly camouflaged, on the outside of the bone china thimble Dunheved thimbles are unusually large measuring 30-35cm in height ('generously sized')

this gives the artist a larger surface to paint

being a birdwatcher and a wildlife artist, Derek's thimbles are painted around British birds, wildflowers and animals, and some of the Cornish countryside also feature. The latter may have been sold all over Cornwall?

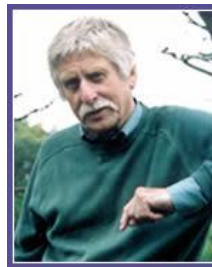
bird name is lettered on inside rim – places on the outside verso

when the number painted is limited, the number is printed on the inside

Derek works on two sizes of Dunheved thimbles – the smaller size thimblette is used in the catalogues. These were used more frequently towards the end of his career



green Dunheved mark is from late 1970s when smaller sized thimbles were used - not signed



<p style="text-align: center;">Anne Hathaway's cottage limited to 250 TTG May 1992</p>	<p style="text-align: center;">Avocet TTG June 2005</p>	<p style="text-align: center;">Badger</p>	<p style="text-align: center;">Badger and robin limited to 195 TTG January 1998</p>
<p style="text-align: center;">Badgers TTG July 1998</p>	<p style="text-align: center;">Badgers TTG June 2009</p>	<p style="text-align: center;">Barn owl TTG June 2004</p>	<p style="text-align: center;">Barred owl TTG July 2004</p>

 <p>Bearded tit TTG May 2005</p>	 <p>Black Grouse TTG October 2005</p>	 <p>Black grouse TTG January 2007</p>	 <p>Black redstart</p>
 <p>Black tailed godwit</p>	 <p>Blackbird TTG December 2002</p>	 <p>Blackbirds TTG January 2007</p>	 <p>Blackbirds</p>
 <p>Blackcap TTG February 2006</p>	 <p>Blue tit TTG December 2002</p>	 <p>Blue tit TTG June 2010</p>	 <p>Bluethroats TTG October 2006</p>
 <p>Brambling TTG September 2003</p>	 <p>Bramblings TTG May 2006</p>	 <p>Budgerigars TTG August 2004</p>	 <p>Bullfinch limited to 150 TTG June 1994</p>
 <p>Bullfinch limited to 200 TTG June 1998</p>	 <p>Bullfinch TTG July 2004</p>	 <p>bunny</p>	 <p>Chaffinch limited to 125 TTG September 1999</p>
 <p>Chaffinch TTG May 2005</p>	 <p>Chaffinch</p>	 <p>Chaffinch</p>	 <p>Chaffinches TTG July 2007</p>

 <p>Cheddar Gorge</p>	 <p>Chiffchaff TTG January 2011</p>	 <p>Choughs TTG September 2005</p>	 <p>Christmas rose Christmas 1990</p>
 <p>Church with sheep</p>	 <p>Cirl bunting</p>	 <p>Cockerel and hen TTG June 2004</p>	 <p>Collared (sic) doves TTG August 2007</p>
 <p>Comma butterfly TTG February 2011</p>	 <p>Corky the Cock limited to 200 TTG October 1993</p>	 <p>Cornish cottage</p>	 <p>Cornish Tin Mine – Levant 1983</p>
 <p>Crested tit TTG March 2005</p>	 <p>Curlew TTG June 2007</p>	 <p>Dabchicks TTG August 2007</p>	 <p>Dartford warbler limited to 200 TTG August 2000</p>
 <p>Devon estuary – Polperro limited to 150 TTG April 1993</p>	 <p>Dipper TTG August 2006</p>	 <p>Dormouse TTG March 2004</p>	 <p>Ducks</p>



Eagle owl
TTG September 2002



English cottage
TTG June 1991



Field fare



Firecrest
TTG September 2003



Fox and robin
limited to **150**
TTG February 1999



Frenchman's Creek



Fruit
TTG March 2004



Geese
limited to **150**
TTG November 1997



Gloucester Old Spot pig
TTG April 1995



Goldcrests



Golden eagle
TTG October 2008



Golden Hind



Golden oriole
TTG November 2004



Golden plover
TTG March 2006



Goldfinch
TTG February 2005



Goldfinch
TTG March 2009



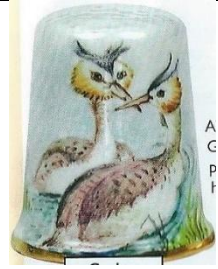
Goldfinch



Goosanders
TTG January 2008



Goose



Great crested grebe
TTG June 2005



Great spotted woodpecker
limited to **100**
TTG December 1995



Great tit
TTG August 2001



Green woodpecker



Greenfinch
TTG April 2004



Greenland falcon
TTG January 2007



Grey seals
TTG April 1998



Grey thrush
TTG July 2002



Grey Wagtail
TTG April 2006



Grey wagtail



Guy Fawkes
TTG November 1995



Hare
TTG July 2011



Hare and robin
Christmas 1996



Harvest mouse



Hedgehog
limited to **150**
TTG April 1993



Hedgehog
TTG November 1996



Hedgehog and robin



Heron
TTG June 2005



Highland cattle
limited to **150**
TTG February 1996



Honey buzzard
1985



Hoopoe
TTG April 2005



House
Christmas 1998



House martin
TTG April 2007



House-sparrows
TTG May 2008



Jack Russell
TTG April 1994



Jamaica Inn
TTG April 2002



Jay
TTG January 2005



Kestrels
TTG November 2007



Kingfisher



Kingfisher
limited to **200**
TTG June 1993



Kittiwakes nesting
TTG July 2005



Knot
TTG June 2008



Lapwing



Lesser spotted
woodpecker



Linnets



Long eared owl



Long tailed tit
TTG February 2009



Looe



Lovebirds
TTG June 2006



Mallard



Mandarin ducks



Market House Chagford
February 1983



Meadow pipit
TTG September 2010



Meerkats
TTG August 2010



Mevagissey



Mistle thrush
with mistletoe
berries



Mole
TTG January 2010



mouse



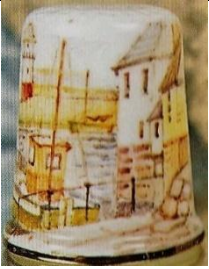
Mousehole
limited to **250**
TTG September 1992



Mousehole
limited to **250**
TTG August 1996



Mute swan
TTG August 2006



Newlyn
limited to **150**
TTG May 1995



Nightingale
TTG April 2006



Nuthatch



Nuthatch
TTG August 2002



Nuthatch
TTG September 2004



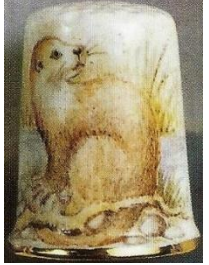
Old Spot



Orchard blackbird
TTG July 2010



Osprey
TTG January 2006



Otter
limited to **125**
TTG May 1993



Otter
TTG February 2003



Otter
TTG November 2009



Over the Bar Bideford
TTG September 1993



Oystercatcher
TTG June 2001



Partridge & rabbit
Christmas 2006



Partridges
Christmas 2006



Peacock



Penguin
Christmas 1991



Peregrine falcon
TTG October 2004



Pheasant
TTG December 2001



Pheasant and partridges
Christmas 1989



Pheasant and partridges
TTG December 2005



Pheasants
limited to **195**
TTG December 1992



Pheasants
TTG December 2007



Pied flycatchers
TTG October 2006

 <p>Pink cockatoo TTG July 2003</p>	 <p>Polar bears Christmas 1992</p>	 <p>Polperro</p>	 <p>Ptarmigan TTG October 2005</p>
 <p>Puffin TTG February 1994</p>	 <p>Puffin TTG October 2003</p>	 <p>Quail TTG October 2006</p>	 <p>R.M.S Titanic sank 2.20am April 15 1912</p>
 <p>Red fox TTG October 1994</p>	 <p>Red grouse limited to 175 TTG August 1993</p>	 <p>Red grouse TTG July 2006</p>	 <p>Red squirrel TTG July 2009</p>
 <p>Red starts</p>	 <p>Redwing TTG February 1994</p>	 <p>Redwings TTG February 1994</p>	 <p>Redwings TTG February 2008</p>
 <p>Reed buntings TTG April 2008</p>	 <p>Ringed plovers TTG January 2008</p>	 <p>Robin 1986</p>	 <p>Robin Christmas 1987</p>
 <p>Robin TTG November 1995</p>	 <p>Robin TTG November 1997</p>	 <p>Robin TTG November 2000</p>	 <p>Robin TTG January 2003</p>

 <p>Robin TTG January 2005</p>	 <p>Robin TTG November 2005</p>	 <p>Robin TTG November 2006</p>	 <p>Robin Christmas 2007</p>
 <p>Robin TTG December 2007</p>	 <p>Robin with house</p>	 <p>Robin with blue tit</p>	 <p>Robins TTG November 2005</p>
 <p>robins</p>	 <p>Rose-coloured starlings TTG April 2007</p>	 <p>Rock-pipit TTG September 2006</p>	 <p>Ruby throated hummingbird TTG May 2003</p>
 <p>Ruff TTG September 2007</p>	 <p>Sanderling TTG June 2008</p>	 <p>Sand-martins TTG May 2008</p>	 <p>Scops owl TTG June 2003</p>
 <p>Sheep limited to 145 TTG September 1996</p>	 <p>Shepherds Christmas 2000</p>	 <p>Shore-lark TTG September 2007</p>	 <p>Sidmouth</p>
 <p>Skylark TTG May 2007</p>	 <p>Snipe TTG April 2008</p>	 <p>Snow bunting TTG January 2001</p>	 <p>Snow goose TTG November 2003</p>

			
Snowman	Snowman Christmas 1990	Snowman Christmas 1997	Snowman TTG November 2000
			
Snowman tobogganing TTG November 1994	Snowy owl TTG November 2003	Snowy owl	Somerset cottage
			
Song thrush TTG May 1994	Song thrush Christmas 2006	Sparrowhawk	Spotted crane TTG October 2007
			
Squirrel TTG November 2001	St Michael's Mount TTG February 1993		Stonechat
			
Suffolk sheep limited to 150 TTG March 1995			
			
Swallows TTG March 2004	Swallows	Tawny owl TTG December 2008	Tawny owl TTG March 2002
			
Teal limited to 150 TTG January 1997	Teddy bear	Thatched cottage TTG August 2009	Thomas Hardy's cottage

 <p>Thrush TTG January 2004</p>	 <p>Tintagel Castle limited to 250 TTG August 1996</p>	 <p>Tomago House N.S.W.</p>	
 <p>Treecreeper TTG September 2004</p>	 <p>Treecreeper TTG October 2007</p>	 <p>Turkey Christmas 1994</p>	 <p>Turnstone TTG May 2007</p>
 <p>Turtle dove TTG September 2006</p>	 <p>Twite TTG January 2009</p>	 <p>Valley of Rocks Lynton limited to 83</p>	 <p>Venice</p>
 <p>Water-rail TTG June 2007</p>	 <p>Water shrew</p>	 <p>Waxwing TTG April 2003</p>	 <p>Wells Cathedral</p>
 <p>Wheatear TTG February 2006</p>	 <p>Whinchat TTG February 2007</p>	 <p>White stork TTG June 2006</p>	 <p>Whitethroat TTG March 2005</p>

 <p>Willow tits TTG November 2007</p>	 <p>Willow warbler</p>	 <p>Windsor Castle limited to 350 TTG December 1992</p>	 <p>Winter TTG December 1996</p>
 <p>Winter partridges TTG October 2002</p>	 <p>Witch limited to 150 October 1995</p>	 <p>Woodcock TTG August 2005</p>	 <p>Wood-lark TTG December 2005</p>
 <p>Woodlark TTG March 2007</p>	 <p>Wren 1987</p>	 <p>Wren TTG July 1997</p>	 <p>Wren TTG January 2003</p>
 <p>Wren TTG May 2005 /February 2008</p>	 <p>Wren TTG March 2007</p>	 <p>Yellow wagtail TTG September 2008</p>	 <p>Yellow hammer TTG April 2003</p>
 <p>Yellowhammer TTG February 2005</p>			

Georgina Winkley (GMW) (1997)

Wales



Anne Young (1993-2003)

Young's barge or canal ware painting is uniquely British she certainly mastered this folk art form in the miniature size required to paint on thimbles most of her thimbles are signed and some are dated – they range from 1980s-1990s

Anne's thimbles are signed on the inner rim Anne Young – lettered upside down dates when included are also inside

there are traditional background colours and the lovely gloss adds to their appeal

it's the trim around the rim where one sees the details

the main design is replicated on the verso

Young also painted wooden thimbles



L: 1998 – her book – sticky label





black



black



black



blue
2003



green
1993



green



green



green



green



green
distinctive yellow rim



red
1998



red



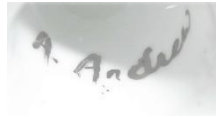
red



white

Other painters - named

A Andrew



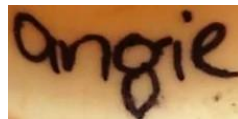
poinsettia

Ann



forget-me-nots

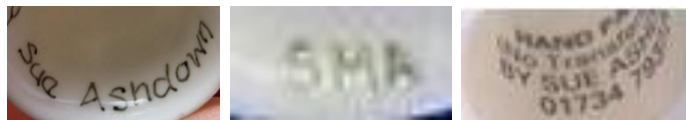
Angie



fish

Sue Ashdown

Reading
'handpainted - no transfers or decals used'



'Welsh Thimblers
limited to **30**

TTG September 1990'

Daffodils with their thimble emblem on verso



daffodils

M Bates

painter for Caverswall



blackberries
circa 1977

Monica Bowron (MB)



Highland landscape
limited to **150**
TTG October 1985
b&w photo

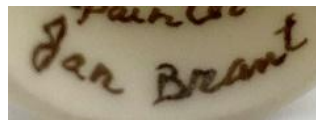


Stonehenge
TTG May 1986



Wiltshire Downs
limited to **150**
TTG September 1986
R: original catalogue entry

Jan Brant



Blue tit

Joan Button



'40'

Painted for Sue Gowan's birthday 1986

Don Cameron (DC)

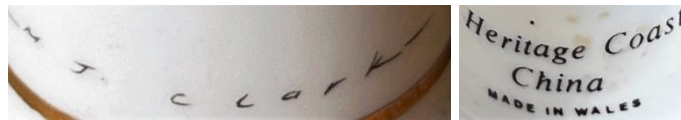


agateware
TTG April 1977

M J Clarke

Wales

Georgina painted for Heritage Coast China. Signature is on the outside



owls

D J Coggan



'The Queens 60th birthday 21 April 1986'
commissioned by TSL
limited to **800**



'A S (Andrew and Sarah) married 23 July 1986'
commissioned by TSL
bee is Sarah's emblem
limited edition



'Ruby wedding of H.M. Queen Elizabeth II & Philip, Duke of Edinburgh 20 Nov. 1947-1987'
gold apex

Harry Colclough

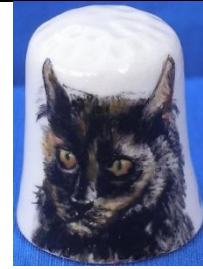
worked for Royal Grafton for 30 years



cat



Horse and cart
TTG June 1985
b&w photo



'Tuppence'



'The Orchards? (1950)
backstamp is Healcraft Fine Bone China

Joan Dahl



Anne Dalton

Ottervale China Company Devon
Anne also painted character head thimbles



Deirdre
Guernsey



Goldfinch



Linnets

V Fawcett
Ilkley



flowers

D Fuller



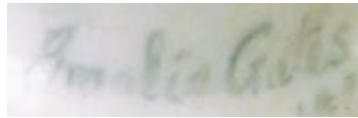
Wren

Shelly Gardner



Unicorn

Amalia Gates



Forget-me-nots
1987

Irene Glendining



Wren

Patsie Griggs



Chick



Flowers

R Hall



pansy

Ann Hickey and Dave Ball

Malvern Worcestershire
(previously Preston)



canal boat painting



not signed

J Humphries



Leslie Lamb

Ross-shire Scotland

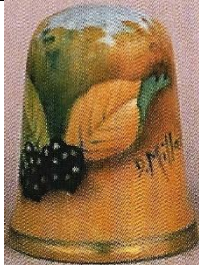
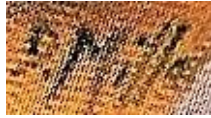


Goldfinch
TTG July 1984



D Miller (DM)

painter for Caverswall
some thimbles have the full signature, others the initials



fruit c.1985



dragon

Clare Montgomery (CM)

Ballymena Northern Ireland



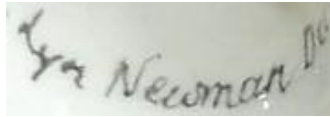
Wildflowers of Ireland

Rachel Munday



Kingfisher
limited to **245**
TTG September 1999

Lyn Newman



Dorothy Newsome



'DTS 2nd International Conference 7.8.9 June 1991'

Dorset Thimble Society

their 3rd Conference thimble was made by Birchcroft probably with the design by Newsome limited edition



'Dorset Thimble Society 3rd International Conference 21-23 May 1993 Southampton'



'DTS 1985 - 2005'
limited edition

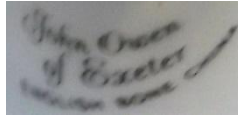


J Oliver



Forget-me-nots
1988

John Owen of Exeter



Devon W.I.
1920-1995
violets

Penny



A F Pinxt



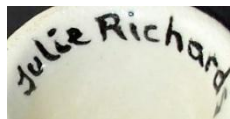
'Embroiderers' Guild 1906-1981'
limited to **100**



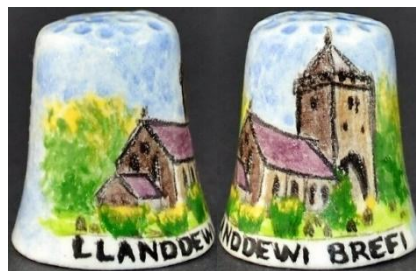
'Margate'
1982

TSL spring 1983
b&w photo

Julie Richards
Wales

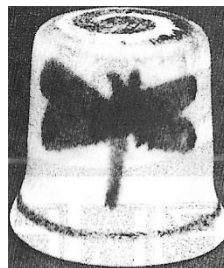


lettered upside-down



'Llanddewi Brefi'

Susan Senior
Scottish potter



white porcelain cobalt blue butterfly
TTG June 1994
b&w photo

Len Skinner

Bwthyn Draenog Crafts
(hedgehog home in English)
Wales



canal boat painting
(1987)

Sylvia Smith

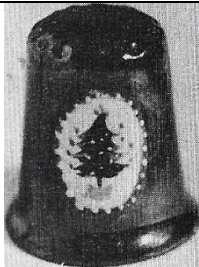


Latticed flowers – mauve
TTG November 1990



Latticed flowers – turquoise
TTG November 1990

Sheila Southwell

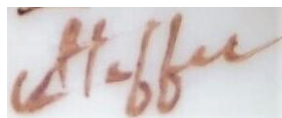


Christmas tree
on pine green lustreware
limited to **100**
TTG November 1984
b&w photo



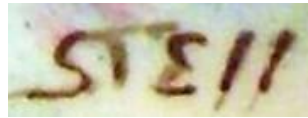
rose
on blue lustreware
limited to **50**
TTG August 1983

Steffie



watchtower

Stell



roses

Ann Sullivan



'Little red riding hood'



Peter Pan

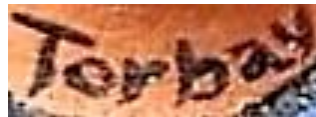


'Pinocchio and Jiminy Crricket'



The three bears

Torbay Potters



'Barnstaple'

I couldn't omit this rare thimble even tho the painter is unknown

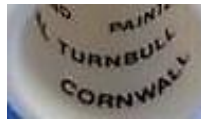
E Trillsam



chickens

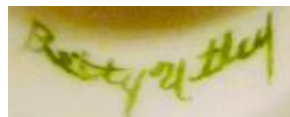
Val Turnbull

Cornwall



fuchsias

Betty Uttley



thistles

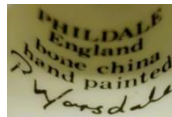
Susan Ware



snowman
1986



P Warsdale
Phildale



Blue tit

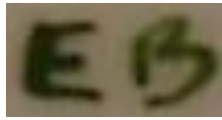
Other painters – initials only
(arranged in alphabetical order by last initial)

NA



pottery

EB



forget-me-nots
'C'

EMB



signed on outside



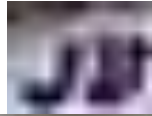
blue tit
lettered 'Anne'

HSB



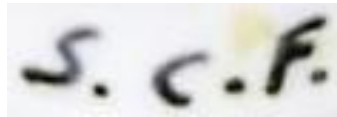
harebells - heath

J B
Henwick



fruit

S.C.F.



metal affixed

FG



anemones

EH



signed on outside



poppies

JH



'Mount Stuart House and Gardens'

EJ



poppies

NJ



DK



The initials are conjoined – there is a mystery mark on the left of the initials



roses

J.K.



signed on outside



harebells

MgM



signed both on in- or outside – R impressed inside

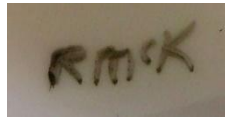


swans



violet affixed

RMCK



Harebells



Snowdrops

RSM



violets
1984

JMN



signed on outside



pansy



primrose



rose



BR

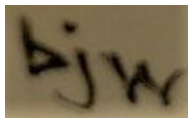


'Cuckoo pint' arum

RS



bjw



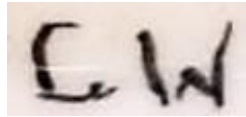
hedgehogs

CTW



ladybirds

CW



'Seacombe Pottery 1852-1864'

D.W



peach with plum

P.W.



fruit

TW



'Peel Tower Ramsbottom'

Other painters – British topic or thimble shape but no marks

(saved here so they don't get lost or a painter's name comes to light – US porcelain thimbles are usually squat with a flat top)

They may have a signature, but it is indecipherable



'Aquarius'



forget-me-nots



'Iona'
Celtic pattern



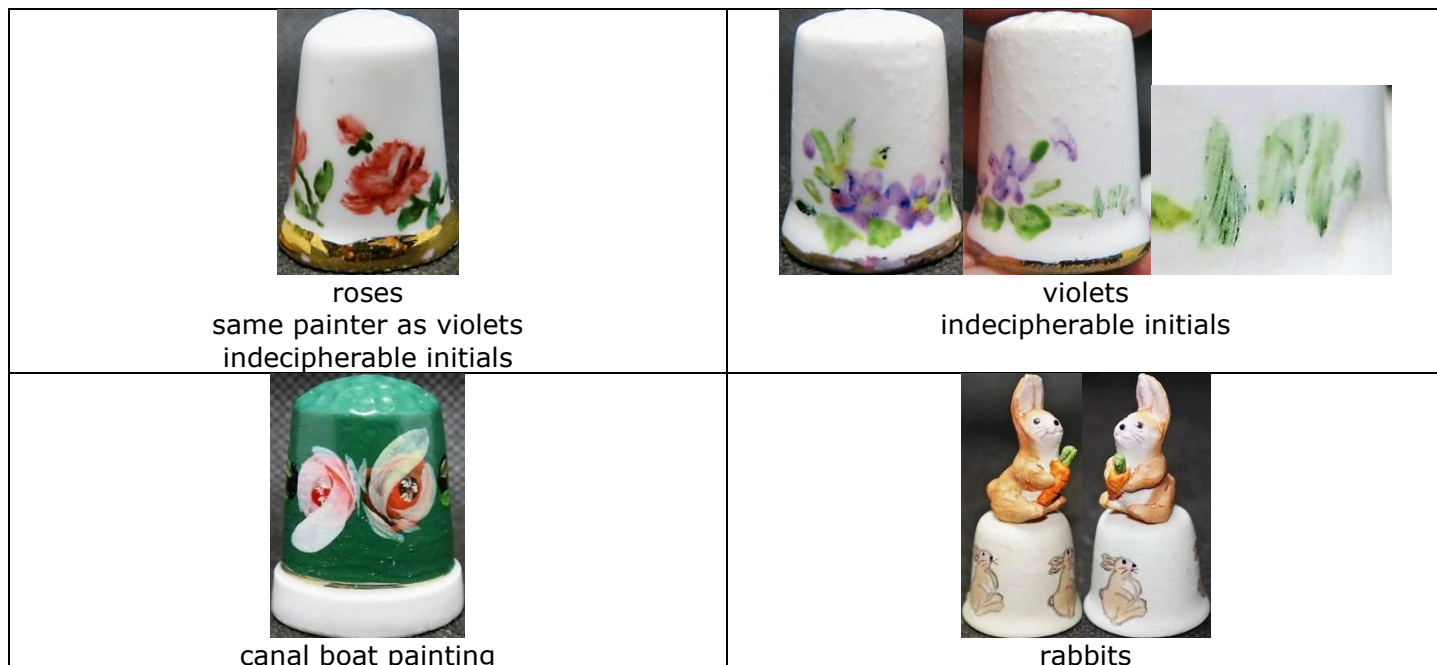
poppies
'Severn Valley'



'Strontian'
Scottish village
sheep



tree with fence



References

- Charlotte Goldberg *David Roy Bowkett former Royal Worcester artist 1948-1962*. *TCI Bulletin* summer 2014
 Susan Gowan *Handpainted thimbles (Peter Carver)* *NTSCA Newsletter* February 2014
 Friedy Kamp *Vingerhoed Nieuws catalogues 1993-2008*
 Coilin Millett *The wonder of Worcester: an illustrated history*. 2020
 The Thimble Guild (TTG) *catalogues 1983-2005*
 Thimble Society of London (TSL) *catalogues 1981-2013*
 Bertus van den Dikkenberg *Het Vingerhoedje*. 1998

Contributors

Wendi Aguiar | Eva B | Sally Bailey | Joanna Blackie-Sew Many Bits | Yolanta Bogdziewicz | Pawel Brzyski
 Joy Carlsen Earles | Charlotte Goldberg | Andrea Griffiths | Linda Heggs | Lynda Herrod | Doreen Lilley-Pricklepin
 Simon Lloyd-Edwards | Carolyn Meacham-Elegant Arts | Amanda Nevin | Maurice O'Reilly | Diane Poesk
 Wanda Ralston-Boulder Bay | Sue Roberts | Mabel Rogers | Jean Rose-Miss Mouse | Linda Samaripa | Mer Saucedo
 Wolf-Dieter Scholz | Jean Taylor | Bertus van Dikkenberg | Michael Wheeler | Melissa Yauk | Krystyna Zagajewska

This listing of Modern British handpainted china thimbles does not purport to be complete or accurate in all aspects.
 Rather it invites comments and contributions to add to our knowledge. My thanks to the contributors.

EMAIL thimbleselect@bigpond.com TO SHARE YOUR KNOWLEDGE

© Sue Gowan
 February 2022