

# Modern British sterling silver thimble makers

1955 – 2022

I think it's time to showcase the skills of the modern British silversmith who has produced thimbles over the last sixty years. With a small output, by comparison with the silversmiths of yesteryear, these thimbles are largely handmade or machined in non-factory settings.

Many of the thimbles produced were made as commemoratives – for British royalty milestones – Easter or Christmas etc. None were produced in quantity, except for James Swann and Son (from Ray Coggle) (JS&S), the handpainted enamelled thimbles by Peter Swingler (PS) and Swann Thimbles (from Frank Jones) S(T) who are out of the scope of this topic – their output is simply too large to feature here. I have also ignored British enamelled thimbles unless the enamelling only forms a small embellishment.

Silversmiths are only featured here once the makers name has been established. I have unknown thimble makers identified only by initials in my archives.

They are included in the additional topic Modern British silver thimble makers still to be identified.

An invaluable source of these photos is from the original catalogues of The Thimble Guild, in Scotland (1983-2018) and Thimble Society of London (1981-2009). The information on new artists was at their fingertips at the time of their catalogues printing.

Apologies for the poor quality of many of the photos from the original catalogues.

The silversmiths are arranged in alphabetical order of their last name. Please share clearer photos to make this the worthwhile database it needs to be, to record these thimbles for posterity. I have included the place where the thimbles were created but not the assay office. Further biographical information is not as relevant to me – I'd rather the thimbles did the talking. I do think it's interesting to show photos where they are available. Further information on these silversmiths as thimblemakers is contained in my topic Makers Marks on British Thimbles.

From 1976, all assay marks must be registered every ten years. I wonder how many of the following silversmiths have needed to do this.

You won't find any Chester assay marks in this section as the Chester Assay Office closed in 1961.

As I create this topic I am awed by the beautiful and imaginative designs. Some show the great skill and delicate touch of the silversmith – but may not have been intended to be used for sewing. Interestingly, also I note that many have the hallmarks running vertically down the thimbles. Many have plain polished surfaces, with no indentations, which makes this possible. After a while, some of the thimble designs seem so similar but the makers marks are definitely different! As in earlier times, the makers marks may not actually be those of the maker!! My aim is to list the thimbles by the hallmarked makers name – once these are identified.

It would be a wonderful search to chase as many of these makers for your sterling silver collection. ENJOY the hunt!

I have already covered D I Dormon Brailsford and Kay Thetford Kendall, two modern British silversmiths, with their stand-alone topics, so they are not replicated here. Peter Swingler joined these topics in June 2017.

**I know who the following three thimble makers are** but have no photos of their thimbles. If you have photos, please share. Or please fill gaps where I don't have many photos – the more there are, the better.

CJB (Clifford John Barber) – PJM (Merriman Silver Ltd) - WW (Whitehill Silver & Plate)

There are now **154** modern silversmiths' thimbles illustrated here - with over 1300 different images of their thimbles – astounding! 41% of these thimbles were produced in the 1980s, the heyday of thimble-making.

The assay office is recorded when known. From 2000 all British sterling thimbles had to have 925 as part of their assay hallmark. I have added this in where known, to aid where there may be no hallmark date.

I have not encountered any assay marks for British sterling silver thimbles with either a 2017 (there is now one example) nor a 2018 or 2019 mark.

Happiness is finding some new British thimbles with a 2020 and 2022 hallmark!

This reaffirms my feeling of sadness that thimble making using precious materials has ended in Britain

---

## William Adams Ltd (WA)

Birmingham



1982

Birmingham

## Charles George Alexander (CGA)

Isle of Man



1981

London for Isle of Man

vertical hallmarks

London import mark

rope-like rim

# Ammonite (ALtd)

## Glamorgan Wales

This Welsh company is based in Glamorgan, south Wales. They marketed their Easter and Christmas thimbles through The Heritage Collection based in Bristol, for distribution in the UK, USA, Australia and South Africa etc

There is a set of British national floral emblems created in 1978

The 1975-1978 thimbles were cast – the later issues (1980-1984) were die-formed and feel less substantial. Other maker marks encountered on the later thimbles are COG and B-L, but these maker marks are yet to be identified. Their output includes 9ct gold examples and gold-plated silver



1975 1977  
Birmingham  
Celtic Knots



1978  
Birmingham  
Daffodils  
Welsh national floral emblem



1978  
Birmingham  
Shamrocks  
Irish national floral emblem  
different from 1982 issue



1978  
Birmingham  
Thistles  
Scottish national floral emblem



1977  
Birmingham  
Welsh Spoons  
some have hallmarks in the apex



1978  
Birmingham  
Welsh Spoons  
9ct gold



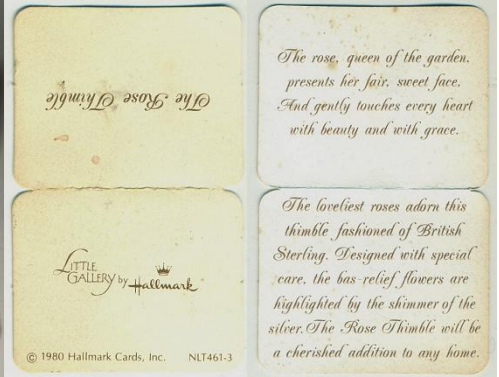
1978  
Birmingham



1978  
Birmingham  
Daffodils  
+ daffodil on apex



1978  
Birmingham  
Easter  
daffodils



1980  
Birmingham  
Stemmed Rose  
for Hallmark Cards – marketed by *Little Gallery*



1981  
Birmingham  
Daisies  
with shadow of green



1981  
Birmingham  
Christmas tree and holly



1981  
Birmingham  
Christmas bells



1981  
Birmingham  
commemorating the Marriage of Prince Charles  
with Prince of Wales feathers  
+ silver gilt



1981  
Birmingham  
commemorating the Marriage of Prince Charles  
with St Pauls Cathedral



1982  
Birmingham  
acanthus leaves



1982  
Birmingham  
Christmas



1982  
Birmingham  
Easter  
rabbits



1982  
Birmingham  
My Valentine



1982  
Birmingham  
Primroses  
silver-gilt



1982  
Birmingham  
Shamrocks  
different from 1978 issue



1984  
Birmingham  
Easter  
lilies



Birmingham  
Lilies



SILVER  
similar to 1978 Easter Daffodils  
no makers marks etc



SILVER  
similar to 1982 Easter bunnies  
no makers marks etc

## Aprilis (AS)

### Devon

Aprilis seem to use a second makers mark (A Ltd) – different mark from Ammonite Ltd



1979  
Birmingham  
vertically stippled surface

## Argyll Silver (AS)

Northfield Birmingham



1988  
turret or castle shape



2002  
Edinburgh  
925  
commemorating Queen Elizabeths Golden Jubilee  
using the 2002 jubilee hallmark on apex as part of the design  
these thimbles were made by Julius Wengert of Pzorzheim, Germany  
R: squat shape

## Vincent J Ashworth (VJA)

Leppington Malton North Yorkshire



1993  
London



Vincent Ashworth, Wolds Silver,  
Leppington, Malton,  
North Yorkshire

## Asprey (A&CoLtd)



1986  
London  
mouse on apex

## Kenneth Baguley (KB)

Baguley & Sons



1981  
London

# Simon J Beer (SJB)

Lewes Sussex



1989  
Sheffield  
Ellis family crest

# Anita Bell Page (ABP)



1979  
Sheffield  
inscribed H.S.



1980  
Sheffield  
applied stylised flowers

# Adrian Gerald Sallis Benney (AGB)

## Reading

1 April 1930-26 June 2008

opened his first workshop in Whitfield Place in London. He moved to Beenham House in 1963 in Reading, which was his home and workshop until 1999. He then moved to Wiltshire

He was awarded the Royal Warrant by HM the Queen as goldsmith and silversmith in 1974, followed by a Royal Warrant from HRH the Duke of Edinburgh and HM the Queen Mother in 1975 and in 1980

HRH the Prince of Wales

Professor of Silversmithing, Royal College of Art and Jewellery 1974-1983



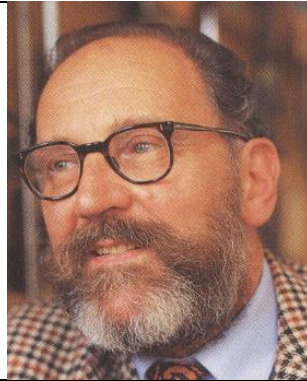
1977

London

commemorating Queen Elizabeths Silver Jubilee

stippled surface

similar design to **MN&WP**



# John H Berry (JHB)

Tenbury Wells Worcestershire

Fellow of the Institute of Professional Goldsmiths

similar design to **WHM - WM**

[www.jhberry.co.uk](http://www.jhberry.co.uk)



1979

Sheffield



## Michael Bickerton (JMB)

**Jewellery Quarter Birmingham**  
established for 50 years – in 2018  
[www.bickertonjewellery.com](http://www.bickertonjewellery.com)



1981

Birmingham

commemorating the Royal Wedding of Lady Diana and Prince Charles  
pierced sides with C D 1981 and bells



## Bishton's Limited (BL<sup>D</sup>)

Birmingham



1978

Birmingham

gilt lining – made in Portugal  
Birmingham import mark

## Bishtons Limited (B(S))



1991

Birmingham

# Blue John Gem Box (BJGB)

Matlock Bath



1988  
Sheffield  
pink stone apex

# Michael Allen Bolton (MAB)

**Cornwall**

b.1938-d.2016



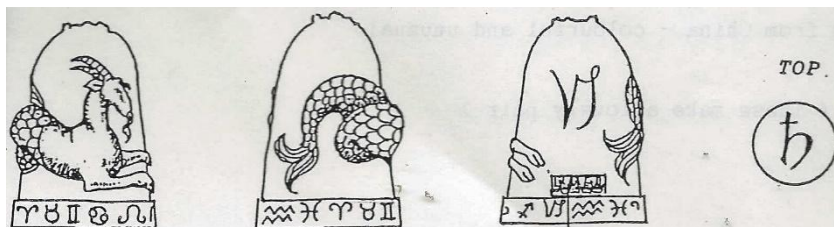
1975  
London  
sterling silver gold and opals



1984  
London  
sterling silver and applied gold flower  
good weight



1989  
London  
Capricorn sign of the zodiac in relief  
designed by artist Joyce Hargreaves  
all signs of zodiac were created





## Boodle & Dunthorne (B&D)

Liverpool



1978  
London

## Christopher S Bowen (CSB)



1978  
London  
crystalline finish and rim  
slightly flared rim



1983  
London  
stippled finish  
slightly flared rim



1997  
London  
commemorating Golden Wedding of  
Queen Elizabeth  
also available in silver-gilt and 9ct  
gold  
slightly flared rim  
commissioned by Thimble Society of  
London - with sketch  
limited to **800**



1997  
London  
'Elizabeth and Philip 1947 - 1997'  
silver-gilt

# Aidan J Breen (AJB)

Dublin  
gold and silversmith



1985 1986

Dublin with Hibernia mark  
St Brendan's boat scene – lower different boat



1985

Dublin with Hibernia mark  
St Brigid's Cross



5



## W I Broadway (B&Co)



1981

Birmingham

with an inscription *18 years in S.L.C*



1983 1990  
Birmingham



1984 1989 1990 1995 1997 2000  
Birmingham  
similar design to **E&Co - nt - MK - DP**



1988

Birmingham

## Thomas Buchanan (TB)

**Cardenden Fife Scotland**



1979

Edinburgh

stone in apex  
marks on inner rim

## Clive Norman Bullivant (CNB)

Clive trained in 3D design specialising in metal and ceramics and ran a successful Silver workshop before becoming a teacher of Design and Technology up to A-level. Three times winner of Goldsmith Craft and Design Council awards for silversmithing design and seven international product design awards Clive now works with handcrafted pewter producing pieces inspired by nature and travel (Bridge Arts in Uckfield)  
he also creates handpainted enamelled sterling silver pill boxes



1982

London

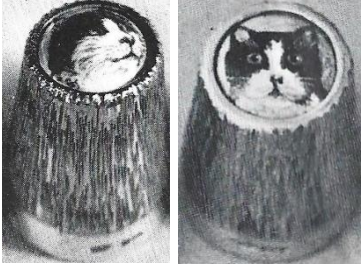
vertically stippled surface  
handpainted enamelled apex with cottage scene



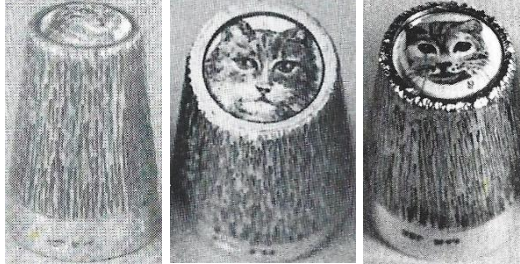
1982

London

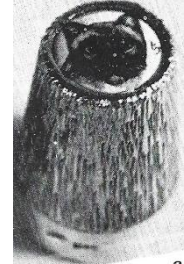
vertically stippled surface  
handpainted enamelled apex with leopard or cheetah



handpainted enamelled apex with  
black cat



handpainted enamelled apex with ginger  
cat



handpainted enamelled apex  
with Siamese

## Clive Edward Burr (CB)

London

Clive Burr studied under Gerald Benney at the Royal College of Art and set up a workshop in 1979 with fellow graduates Jane Short and Alistair McCallum. In 1983 they moved to Old Street and were joined by Rod Kelly and Sheila McDonald. By 1988 Clive had set up by himself in Berry Street where he stayed until he moved into the new Goldsmiths Centre in 2012.



1981

London

commemorating the Marriage of Prince Charles  
this thimble also exists with a different mark: **RL** (R)  
this is the engraver's mark of Robert Legg  
lower: silver-gilt



## Timothy Joseph Burtwell (TB)

**Tring Hertfordshire**

This silversmith is using children's story characters as a theme



1979 1989

London

hand-indentations



1983 1997

London

Piglet and Pooh

both are sterling silver thimbles



1987 1992

London

Christopher Robin with Winnie the Pooh and umbrella in the rain



1991

London

mice amongst the oak leaves

R: silver-gilt version – weight 13 grammes



925  
Winnie the Pooh  
with balloon - honeypot



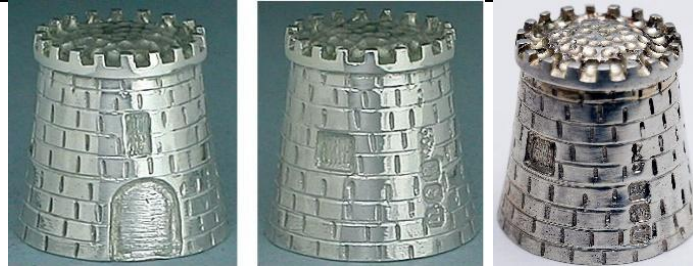
London  
bear with building blocks

## Desmond A Byrne (DAB)

The Castle Yard The Parade Kilkenny Ireland

gold and silversmith

his shaped thimbles were commissioned by Fern Hill



1985  
Dublin  
turret or castle shape  
vertical hallmarks



1996  
Dublin  
Kilkenny turret or castle shape



2001  
Dublin with Hibernia mark  
two cats with furry surface



Dublin  
925  
applied cats

# Philip Campbell (PDAC)

## Mull Silver

Tobermory Isle of Mull Hebrides Scotland

Philip also created pewter and wooden thimbles

see also TCG



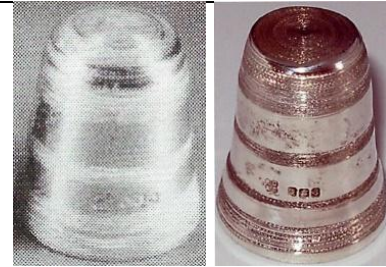
1980  
Edinburgh  
applied heart and crown



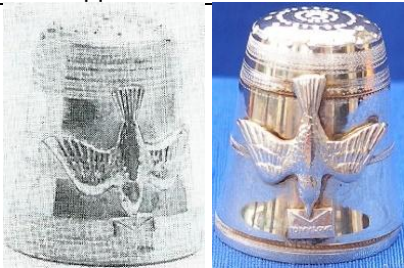
1982  
Edinburgh  
applied thistle on band



1983  
Edinburgh  
applied thistle on band



1983  
Edinburgh



1983  
Edinburgh  
Dove of Peace To my Love message  
applied dove



1983  
Edinburgh  
plaited-type rim



1983  
Edinburgh



1984  
Edinburgh  
frosted bands



1985  
Edinburgh  
pincushion apex  
limited to **100**  
R in b&w: showing pins



1985  
Edinburgh  
criss-cross bands



1986  
Edinburgh



1986  
Edinburgh  
lightly pressed floral design



1986  
Edinburgh  
commemorating the marriage of Prince Andrew  
vertical hallmarks  
hand indented apex  
see also similar thimble for **NTS**



1987  
Edinburgh  
Throned 1837 VR  
commemorating 150 years Ascension of Victoria  
vertical hallmarks



1987  
Edinburgh  
whisky  
vertical hallmarks t  
histle on apex



1987  
Edinburgh  
The Celtic Ram  
vertical hallmarks



1987  
Edinburgh  
 Celtic design  
 vertical hallmarks along band on verso



1980s  
Edinburgh  
 applied Celtic pattern



1980s  
Edinburgh  
 plaited-type rim



1980s  
Edinburgh  
 applied Celtic lion rampant



floral

## Capri Jewellery Ltd (CJ)

London



1977  
London  
 identical design made by **HH** – with other details identical

# Robert Carr (RC)

Sheffield

recreations of Victorian patterns

this maker's thimbles were for sale in David Jones Ltd in Australia



1999  
Sheffield



1999  
Sheffield



2000 2006  
Sheffield  
925



2002 2006  
Sheffield  
925



2006  
Sheffield  
925



2006  
Sheffield  
925

# Audrey Grace Connelly (AGC)

Scotland



1985  
Edinburgh  
smooth sides

# William Henry Creswick (WHC)

**Studio Deems**  
**Branscombe Beer Devon**  
Artist in gold & silver



1960  
Chester  
9.375 gold  
dolls size - 9.00mm

# Susannah Mary (Molly) Challoner (SMC)

**Newcastle**

Molly Challoner (1901-1990) was a Newcastle born and based jeweller and silversmith working from her family home 15 Framlington Place, Newcastle. She exhibited jewellery and silver at both the 1926 and 1928 Arts and Crafts Society Exhibitions. Her work was exhibited in 1994 at a Brighton University exhibition Women Designing: Redefining Design in Britain Between the Wars. These same pieces are in the collection of the Goldsmith Hall. She registered her SMC mark at the London assay office in 1923 and appears to have stopped working at the advent of the second world war, when she became a nurse and occupational therapist. After 1945 she contributed academically to the growing profession of occupational therapy.



1955  
London

# Chamberlain Clarke Partnership (CCP)

These thimbles were probably made by James Swann & Son (JS&S) or Swann Thimbles S(T)



1984 1991  
Birmingham  
applied cupids



1991  
Birmingham  
ornate applied band  
rest smooth sides



1999  
London  
925

the hallmarked thimble is tiny - too small for practical use  
the sterling silver Cupid holder has the 2000 hallmark symbol on the base opposite the holder figurine



Sterling (no hallmarks)  
marks on leg of cupid



band of applied hearts

# Elizabeth Jane Chantler (EJC JC)

**Brough Cumbria**

**AJ Designs**

she began designing and making thimbles and jewellery in 1975, with the assistance of Ailsa McKenzie

Jane uses both of her marks, irrespective of the assay date

Janes thimbles were also available thru The Thimble Guild in Scotland 2001-2007

no thimbles were created after 2012?

where there are no hallmark dates, the thimbles are her stock items



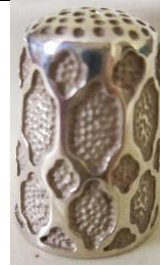
1973 1976 2002

Sheffield

Barcelona

(1973 version has smoother finish)

10.2 grammes



1980 - EJC

Sheffield

Moorish

R:oxidised version

11.9 grammes



1980 1982 2001

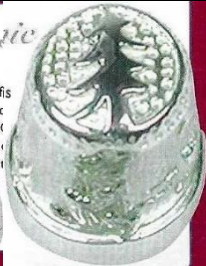
Sheffield

Tudor Rose

body is divided into eight panels

rose and leaf clusters are repeated on apex

9.9-13.5 grammes



1981 2006 - EJC JC

Sheffield

Teddy Bears Picnic

tree on apex



1982 2001

Sheffield

Chamomile Daisy

11 grammes

available in 9ct gold



1983 2002

Sheffield

Strawberry Fields

pattern repeated on apex

18 grammes

also available in 9ct gold



1983 2002  
Sheffield  
 Swallows and Clouds  
 1983 limited to **100**  
 also available in 9ct gold  
 16 grammes



1983 2004  
Sheffield  
 The Silver Clover  
 clover repeated on apex  
 1983 limited to **200**



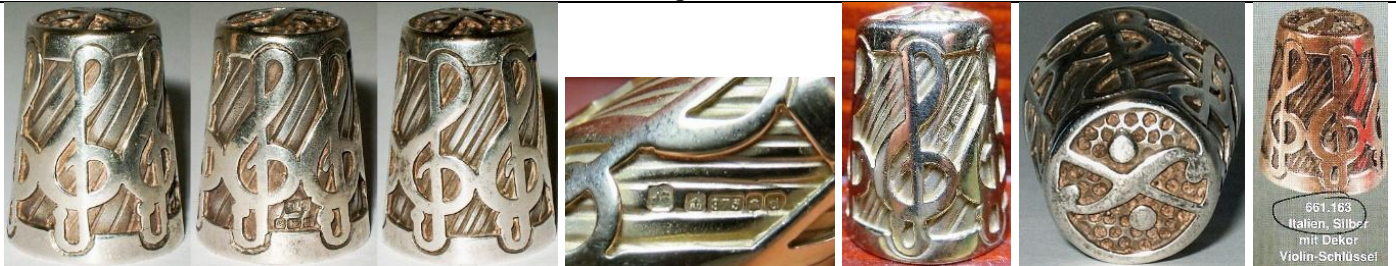
1984 2002  
Sheffield  
 Victorian Church Window  
 13.9 grammes



1987 1988 - EJC  
Sheffield  
 Avalon  
 one pattern repeated on apex  
 16.4 grammes  
 also available in 9ct gold



1989 1997 - EJC  
Sheffield  
 Swaledale Sheep  
 11.8 grammes



1994 1995 2003  
Sheffield  
 Treble Clef  
 13.2 grammes

C: .375 9ct gold (2003)

R: in May 1995, this copy was offered for sale by P J Walter as Italian .800 silver, marked for Novaro and makers mark + 22



1996

Sheffield

commemorating Queen Elizabeth's 70<sup>th</sup> Birthday  
 commissioned by Thimble Society of London

R: oxidised version

limited **500** silver and **200** 9ct gold  
 22.4 grammes



1997

Sheffield

commemorating Queen Elizabeth's Golden Wedding  
 two bells design on apex

19.9 grammes



2001

Sheffield

The Apple Orchard

showing three panels of the stages of apple trees  
 apple on apex

R: in May 1995 this copy was offered for sale by P J Walter as Italian .800 silver, marked for Novaro and makers mark + 22

11.6 grammes



2001

Sheffield

Shooting Star  
 star on apex

11 grammes



2001

Sheffield

The Dolphin  
 dolphin repeated on apex

R: 9ct gold (2004)

15 grammes



2002  
Sheffield  
The Rabbit



2002  
Sheffield  
commemorating Queen Elizabeth's Golden Jubilee  
also available in silver gilt and 9ct gold  
commissioned by Thimble Society of London  
hallmarks within the 0  
17 grammes



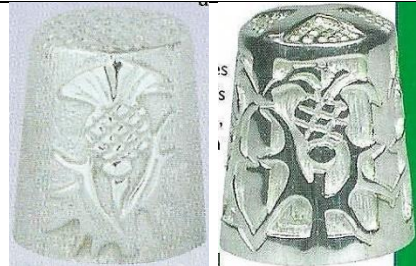
2002 2003 - JC  
Sheffield  
Goose Fair Six Geese a-Laying



2002  
Sheffield  
Fishing Fleet (in Whitby)  
seagull on apex  
also available in 9ct gold



2003  
Sheffield  
Persian Rug  
also available in 9ct gold



2003 2006  
Sheffield Edinburgh  
Thistle  
four thistles all round  
St Andrews Cross on apex  
also available in 9ct gold



2003  
Sheffield  
 The Cats  
 four cats with mouse on apex  
 also available in 9ct gold



2006  
Sheffield  
 Three Ships Sailing  
 anchor on apex



2006 2013  
Sheffield - Edinburgh  
 Nocturne  
 owl in moonlight  
925  
 25 grams



2007  
Sheffield  
 Three March Hares  
 with crescent moon on apex  
 JC makers mark  
925  
 limited to **75**  
 14 grammes



2012 - JC  
Edinburgh  
 commemorating Queen Elizabeths Diamond Jubilee  
 limited to **75** - with Edinburgh jubilee mark  
 16.8 grammes



Bramble  
bramble repeated on apex



A child scampers over the grass, her kite bobbing above her (promotional material)  
12 grammes  
made for a Thimble Club



Millennium



'A Frende Loveth atte all Tymes'  
A on apex  
13 grammes  
made for a Thimble Club



25<sup>th</sup> Wedding Anniversary  
private commission



# Charterhouse Mint Limited (CM)

## London

set of 12 reproductions of old thimbles by this company from original museum thimbles, the set is entitled Thimbles through the Ages: a connoisseurs collection with a modern assay mark, so there can be no confusion. The original thimbles had no assay marks, so the new marks had to be incorporated in these thimbles, cast from the originals.



1986  
London  
14<sup>th</sup> century



1986  
London  
15<sup>th</sup> century  
trifoliate holes in apex



1986  
London  
16<sup>th</sup> century  
tailors



1986  
London  
16<sup>th</sup> century  
touchstone of London



1986  
London  
17<sup>th</sup> century  
stars



1986  
London  
17<sup>th</sup> century

Charles II and Katherine of Braganza's Wedding



1986  
London  
17<sup>th</sup> century

Feare God and honour the king



1986  
London  
17<sup>th</sup> century  
includes makers mark of bird on pedestal



1986  
London  
18<sup>th</sup> century  
owners mark EC



1986  
London  
Birth of Prince of Wales 1841



1986  
London  
Christening of Prince of Wales 1842



1986  
London  
19<sup>th</sup> century

## J B Chatterley & Sons Ltd (JBC&<sup>SL</sup>D)

Birmingham



1977  
Birmingham  
Just a Thimbleful

# Lorna Christie Jewellery (LCJ)

Isle of Mull Scotland  
vertical hallmarks



1989

Edinburgh

TSL in stepped cursive  
commemorating AGM Sept 13<sup>th</sup> Cambridge  
commissioned for Thimble Society of London



1992

Edinburgh

raised wreath of decorative leaves  
hand indented apex with star-formation

# Brian Clarke (BC)

**The Old Schoolhouse Ballinaclesh Rathdrum Co. Wicklow Ireland**

Brian Clarke is an Artist Metalsmith who has been running his own studio in Co. Wicklow, Ireland, since 1973. Having studied metal- and silversmithing techniques in Dublin, Paris and the UK, he embarked on a long career of commissions, private silversmithing work, sculptural pieces and research. His work is held in many collections, including in the National Museum of Ireland, in Dublin and the National Museum of Decorative Arts in Collins Barracks, Dublin.

[www.silversmithingworkshop.com](http://www.silversmithingworkshop.com)



1978

Dublin

rope-like rim and stippled surface

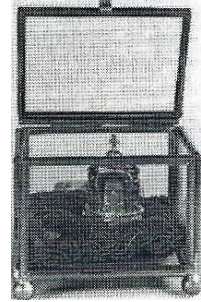


# Timothy P Clayton (TPC)

London



THIS SILVER THIMBLE AND CROWN COVER IS ONE OF A PRIVATE EDITION OF ONLY 200 DESIGNED BY JENNIFER M. YOUNG TO COMMEMORATE THE SILVER JUBILEE OF HER MAJESTY QUEEN ELIZABETH II LONG MAY SHE REIGN



1977

commemorating Queen Elizabeth's Silver Jubilee

1952 E<sup>II</sup>R 1977

with silver gilt and four garnets crown which fits over thimble

lower L: gilt has largely worn off

limited to **200**

thimble designer is Jennifer M Young

thimble in glass and gilt presentation case with red velvet cushion

R: b&w photo

# CME Jewellery (CME)

Leicester



1990s

Birmingham

925

seated Fairy atop



Birmingham

925

Stork with Baby atop



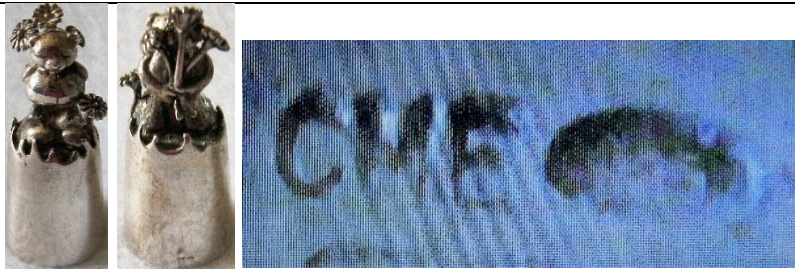
Birmingham

925

ballerina atop

import mark





925

Teddy Bear atop holding flowers behind his back



Birmingham  
925  
hedgehog



Birmingham  
925  
snail



with blue stones  
Birmingham import mark

## Albert Cohen & Charles Solomon (C&C)

Holborn Circus London  
trading as Cohen & Charles



1964 1966 1969  
Birmingham  
red stone apex  
size 7 9 5 6



1965 1966  
Birmingham  
size 4



1967  
Birmingham  
marks upside down  
similar design to **SJR**



1967  
Birmingham  
size 6



1973  
Birmingham  
black stone apex  
size 6



1974  
Birmingham  
agate set flat onto apex  
size 5



Birmingham  
stone set flat onto apex  
size 5

## Clive & Clarissa Cooke (C&CC)

### Wood Yard Gallery Ludlow

they use the lost cast waxing or spinning by lathe – motifs soldered on  
in 2002 these thimbles retailed at between £52-65

where there are no hallmark dates, the thimbles are stock items – if yours has a hallmark date, please share. some of these thimbles were sold in Australia in 1988 by Jihl Berry of *Thimble Collections*, and Barbara Kelly of *The Thimble Collector*.



1980s (tho 1987 date also seen)  
applied RSN for Royal School of Needlework and thread needle  
(seen incorrectly advertised as Royal School of Nursing)  
this commission is where C&CCs thimble journey began  
rope-like rim



1984 1986 1987

London

9ct gold Bees applied on beehive

R: some sold in Indian rosewood beehive container and an applied silver bee



1987

London

includes a sterling silver Beehive thimble holder with 9ct gold Bees  
+ VI import mark into The Netherlands + *De Vingerhoed* KS mark



1984  
London  
beehive shape



1984 1988  
London  
applied 9ct gold Butterfly on apex



1984  
London  
applied 9ct gold bee on apex and flowers



1984 1988  
London  
Cat shape



1984 1986  
King (chess piece)

also sold in an Indian rosewood container and silver portcullis

C: in May 1995 this copy was offered for sale by P J Walter as Italian .800 silver, marked for Novaro and makers  
mark + 22

I don't have any further details on the gold thimble (R)



1984 1987  
Owl shape with dropped rim



1985  
Penguin shape



1985  
applied mouse in 9ct gold on apex



1986 1988  
Queen (chess piece)  
R: in May 1995 this copy was offered for sale by P J Walter (German mail order) as Italian .800 silver marked for Novaro and makers mark + 22 thimble box in shape of chess piece



1986  
London  
Fox  
head shape



1986 1988  
London  
Dog  
head shape



1990  
London  
applied Ducks over vertical stippling  
12 grammes

1988



1988

London

large bee applied on beehive shape

Indian rosewood beehive container and a silver bee applied



1988 1989

London

Celtic Ribbon



1989

London

Celtic



1989

London

applied 9ct gold Butterflies and flowers



1990

London

applied Hedgehog atop



1991

London

strawberries  
strawberry repeated on apex



1993 or 1996  
applied mouse and 9ct gold cheese



2000  
London  
applied butterfly atop



applied 9ct gold Bee and flowers



bee and honeycomb



bear shape



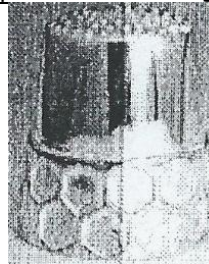
applied Bow in 9ct gold



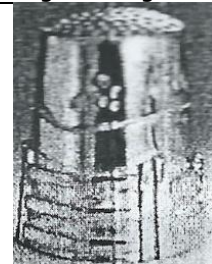
applied frog in 9ct gold atop apex



hedgehog shape



honeycomb band



wall and gate



wildflowers

## Ronald Cordon (RC)



1981  
London  
hand-indentations

# Tim (Frogman) Cotterill

Cotterill grew up in the United Kingdom and has a passion for frogs. He moved to California.



c.1990  
no hallmarks Sterling © Frogman



## Crescent Silver (CS)



2012  
Birmingham  
applied Princes of Wales feathers Ich Dien  
Highgrove  
smooth surface

# Anthony Stephen Darwent (ASD)

Castleton Derbyshire

Blue John Jewellery



1986

Sheffield



# Deakin & Francis (D&F)

Birmingham

these thimbles were made by **JS&S** with D&F makers mark – others have the **JS&S** makers mark – made for Thimble Society of London



1982

Birmingham

commemorating the Birth of Prince William  
+ 9ct gold  
commissioned by Thimble Society of London  
also made by **JS&S**



1984 (K)

Birmingham

commemorate the birth of Prince Henry  
15 September 1984  
gilded crown in 18ct gold including Thimble Society of  
London on apex  
also available in sterling silver  
commissioned by Thimble Society of London



1985 (L)

Birmingham

commemorating Queen Elizabeth the Queen Mother 85<sup>th</sup>  
birthday 4 August 1985  
with red white and blue enamelling  
commissioned by Thimble Society of London  
limited to **60**



Christmas 1992 (S)  
Birmingham



Deakin & Francis Birmingham

## Gregory John Dennis (GJD)

boxed set of 12 designed by Austrian artist Ludwig Redl. Redl's name appears below the number of each bas relief design. Limited to **1000** sets (tho according to Jean Shoup in 1988, only **100** sets were ever made), commemorating American Revolution and War of Independence, in Britannia silver (958 1000)

See also **LR**



1984

London

no. 1: The Boston Tea Party



1984

London

no. 2: Paul Revers Midnight Ride



1984

London

no. 3: Fight on Concord Bridge



1984

London

no. 4: Battle of Lexington



1984

London

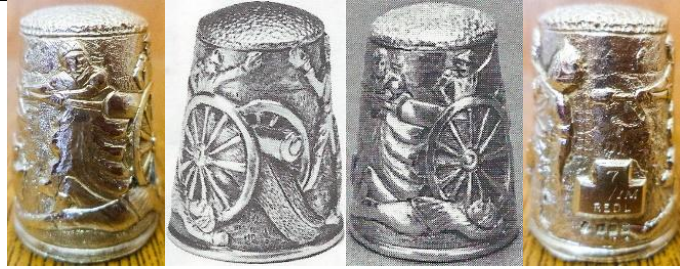
no. 5: Battle of Bunker Hill



1984

London

no. 6: Declaration of Independence



1984

London

no. 7: Molly Pitcher-Battle of Monmouth



1984 1992

London

no. 8: Washington Crossing the Delaware



1984

London

no. 9: Battle of Trenton



1984

London

no. 10: Battle of Germantown



1984

London

no. 11: Winter at Valley Forge



1984

London

no. 12: Surrender at Yorktown



boxed 12 of 1984 American Revolution set



1984 1992

London

The Spirit of 76

intended as a promotional thimble for the set



1992

London

showing #6 & 7  
the set was re-issued?



1998

London

war scene

## Stuart Devlin (SD)

London



1980

London

silver-gilt, enamelled floral band

## Dix Jewellery (DJ)

trading as Harrison Brothers & Howson Ltd – see also **HBH**

made in Pforzheim Germany by Julius Wengert

Wengert marks his thimbles in the apex with sizes S M or L

some have typical eight-point flower mark of modern German thimble makers



1990  
London  
925

London import mark  
eight-point mark on apex



2000 (millennium mark)  
London  
925

eight-point mark on apex



London  
925

London import mark  
bunnies in relief all round



London  
925

London import mark  
foxes in relief all round

## Peter John Doherty (PJD)

Birmingham – the Worcestershire



1986

Birmingham

hallmarks are upside down

## K L Downes (KLD)

Birmingham



1981

Birmingham

advertising Carlsberg

# F Drury (Silversmiths) Ltd (FD)

Dore Sheffield



1982  
Sheffield

# Thomas Kerr Ebbutt (TE)

Edinburgh

Ebbutt started work in 1896 and died in 1921. His company continued in business until 1977 when it was bought by Hamilton & Inches. H&I continued to use the TE mark until c2000



1986

Edinburgh

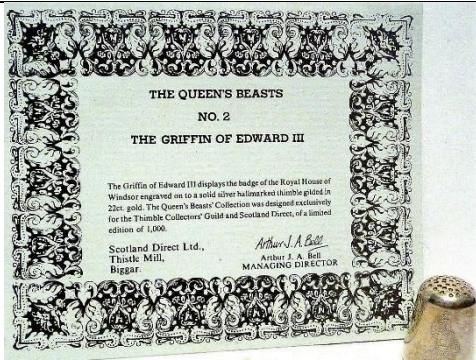
commemorating Commonwealth Games Edinburgh  
R: gilded sterling silver  
vertical hallmarks



1986 1988

Edinburgh

the Queens Beasts – White Lion of Mortimer  
(no 5 from set of 10)  
issued by Scotland Direct The Thimble Collectors Guild  
limited to **1000**



1986

Edinburgh

the Queens Beasts – The Griffin of Edward III  
(no 2 from set of 10)  
issued by Scotland Direct The Thimble Collectors Guild  
limited to **1000**



1989

Edinburgh

the Queens Beasts – The Lion of England  
(from set of 10)



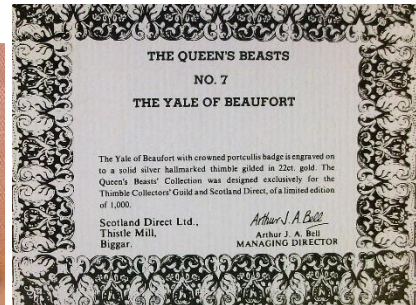
1986  
Edinburgh  
 The Queens Beasts - set of 10  
 vertical hallmarkst



1986  
 the Queens Beasts set of 10  
 vertical hallmarks  
 silver gilt



1986  
Edinburgh  
 two of the Queens Beasts  
 silver gilt



according to the accompanying certificate the set was made exclusively for Scotland Direct and limited to **1000** sets

full set: The White Greyhound of Richmond – The Griffin of Edward III – The Falcon of the Plantagenets – The Black Bull of Clarence – White Lion of Mortimer – The Unicorn of Scotland  
 The Yale of Beaufort – The Red Dragon of Wales – The White Horse of Hanover – The Lion of England



1990

Edinburgh

commemorating 90<sup>th</sup> Birthday of HM the Queen Mother with official approval for the design and use of the Coat of Arms being sought from the Lord Lyon, King of Arms and Clarence House. The reverse bears a commemorative engraving; the sides are decorated with the Queen Mother's favourite flowers and roses.

the thimble is very large – almost twice the height of a normal thimble @ 1½ ins or 32mm; diameter 25mm weight 44.4 grammes (1.57ozs) limited to **475** thimbles

## Elkington & Co (E&Co)

Birmingham

probably made by **JS&S**



1961

Birmingham

similar design to **B&Co – nt – MK – DP**

## Exchange Findings Ltd (EFL<sup>TD</sup>)



1992

Sheffield

inscribed *Madeleine*

made in Germany – 8-petal flower mark on apex

# Roy Fairweather (RF)

**Ashbourne, Derbyshire**

Ron Fairweather is currently head designer and chief gold and silversmith for Avanti Jewellers. He served his apprenticeship at a London-based company, producing items for the high end retailers around Bond Street. He was based in Wirksworth Derbyshire when his 1980s sterling thimbles were created.



1986  
Sheffield



# F J Flavell Ltd (FGF)

**Stourbridge**



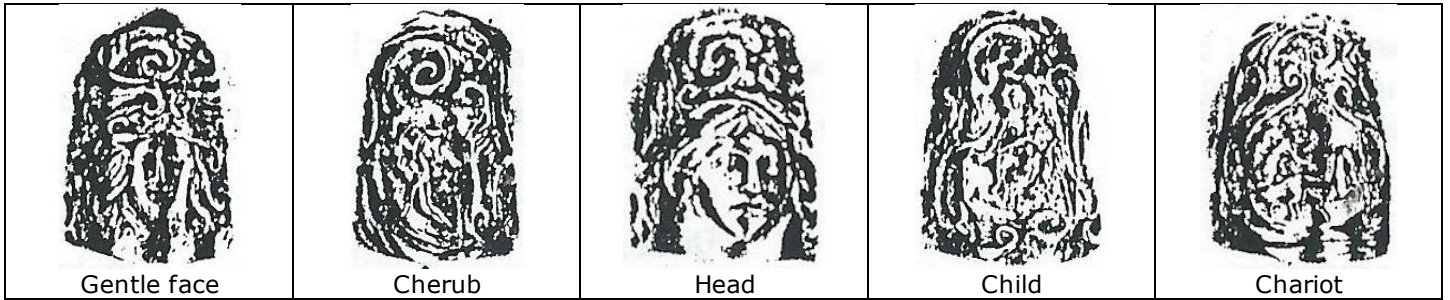
1984  
Birmingham  
Joy



2002  
Birmingham

# Shirley Frost (SF)

handcast



these designs were identified by these line drawings by Thimble Society of London in winter 1981. These may have that hallmark date? Some of these were also available in brass



1977

Birmingham

commemorating Queen Elizabeths Silver Jubilee



1978

Birmingham

face eyes closed



1979

Birmingham

face

many copies fakes were made of this design  
finger-shaped



1979

Birmingham

face within swirls



1981

Birmingham

commemorating the Marriage of Prince Charles  
art nouveau swirls on verso  
with Welsh Dragon  
finger-shaped



1981  
Birmingham  
 commemorating the Royal Wedding of Prince Charles  
 with Prince of Wales feathers  
 art nouveau swirls on verso  
 finger-shaped

## Brian Leslie Fuller (BLF)

Clerkenwell London



1974  
London  
 finely stippled sides



1977  
London  
 stippled sides



1979  
London



1984  
London  
 dormouse

# Garrard & Co (G&C<sup>o</sup> L<sup>d</sup>)

London

The House of Garrard  
Regent Street and Albemarle Street London

These jewellers would have commissioned thimbles from various silversmiths



1983

London

enamelled leaves band with butterfly on apex  
probably made by Paul Morley



1989

Birmingham

Royal Opera House  
with Royal coat-of-arms of the United Kingdom  
engraved on apex



1998

Sheffield

925

import mark

Hickory Dickory dock The mouse ran up the clock



## Charles Owen George (COG)



1982  
Birmingham  
Christmas 1982 with reindeer



1982  
Birmingham  
Easter 1982 with daffodils



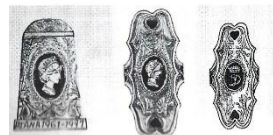
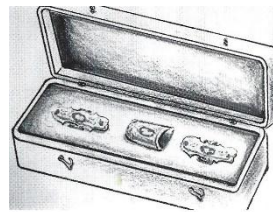
1984  
Birmingham  
Christmas 1983 with stylised tree

## Peter Gillmore (PG L<sup>D</sup>)



1977  
London + London import mark + Jubilee mark  
925  
commemorating Silver Jubilee of QEII  
identical design to the more well-known design by JS&S  
(marks cleanly struck so not a reproduction)

## Alicia Gordon (AG)



1998  
Sheffield  
commemorating the death of Princess Diana - Diana 1961-1997  
sterling silver and enamelling (850 copies) – 9ct gold – 18ct gold and enamelling (450 copies)  
commissioned by Thimble Society of London – with sketch of set with two finger guards  
designer: Kuo-chi Lin  
small dainty thimble

# Ola M Gorie (OMG)

Orkney Scotland

she founded her jewellery company in 1960



1981

Edinburgh

applied thistle with Celtic symbols, including St Columba Cross, a Saltire and a unicorn  
on finely stippled or frosted sides  
flat apex



1981

Edinburgh

applied different Tudor Rose  
on finely stippled or frosted sides  
flat apex



1988 1989

Edinburgh

applied Tudor Rose  
domed apex



1989

Edinburgh

applied thistles  
domed apex



# Norman Grant (NG)

Lundin Links Fife Scotland

(1943-2017)

his company was known as Dust Jewellery



1976 1980 1981

Edinburgh  
squirrels

hand-indented apex

lower: this example was acquired in 1976 from the Design Centre, Haymarket in London



1978 1979

Edinburgh

bees amongst flowers with large honeycomb



1979

Edinburgh  
large bee



1981 1982

Edinburgh  
butterflies

1981 hallmarks are lettered across middle of thimble – 1982 they are on rim



1981 1982 1983

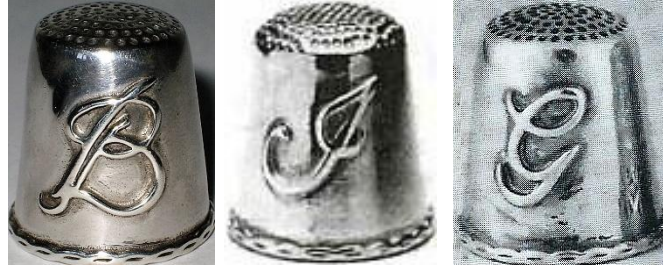
Edinburgh  
dragonflies



1982  
Edinburgh  
farm



1982  
Edinburgh  
bees in flowers with small honeycomb  
patterned rim



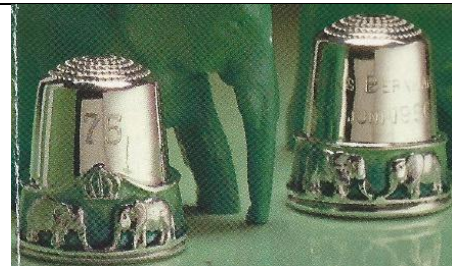
1982 1983 1986  
Edinburgh  
applied initial B (1982) I (1983) and G (1986)



1984  
Edinburgh  
commemorating 75<sup>th</sup> Birthday  
30 April 1984 Prinses Juliana  
blue enamelling – beaded rim signifies pearls she always wore and there are 75  
crown over blue enamelling on apex  
commissioned by Kay Sullivan - includes mark KS for her Dutch De Vingerhoed and the import mark of ZI into the  
Netherlands  
limited to **250**



1985  
Edinburgh  
commemorating 18<sup>th</sup> Birthday  
Prins Willem Alexander 27 April 1985  
gold-plated silver blue enamelling  
commissioned by Kay Sullivan - includes mark KS for  
her Dutch De Vingerhoed and the import mark of ZI into  
the Netherlands



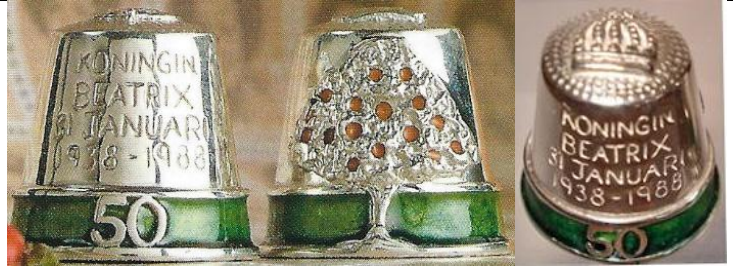
1986  
Edinburgh  
commemorating 75<sup>th</sup> Birthday  
Prins Bernhard 29 Juni 1986  
green enamelled band of four elephants and crown  
commissioned by Kay Sullivan - includes mark KS for  
her Dutch De Vingerhoed and the import mark of ZI into  
the Netherlands  
limited to **250**



1987

Edinburgh

commemorating 50<sup>th</sup> Wedding Anniversary of Princess Juliana and Prince Bernhard  
 wide blue enamelling and gilding - ruby sapphire and zircon below crown  
 commissioned by Kay Sullivan - includes KS mark for her Dutch De Vingerhoed and the import mark of ZI into the Netherlands limited to **300**



1988

Edinburgh

commemorating 50<sup>th</sup> Birthday of Queen Beatrix  
 applied orange tree, orange enamelled oranges and green enamelled band  
 applied crown on apex  
 Koningin Beatrix 1938-1988  
 commissioned by Kay Sullivan - includes KS mark for her Dutch De Vingerhoed and the import mark of ZI into the Netherlands limited to **250**



## Martyn Guille (MG)



1999

London

Guernsey coat-of-arms similar design to **WHM**



2000

London

925  
slightly flared



# Keith Hamilton-Gabb (KHG)

Sutton Coalfield, West Midland



1990

Birmingham

# Harrison Brothers & Howson (HBH HB<sup>S</sup>&H HB&H)

The Chase London SW4

made in Pforzheim Germany by Julius Wengert

Wengert's thimbles are uniquely marked with size in apex: S M L



apex has typical eight-point mark in shape of a flower of German thimble makers



see also **DJ**



2002

Sheffield (HBH)

925

commemorating Queen Elizabeths Golden Jubilee  
2002 Jubilee hallmark is part of design  
eight-point mark on apex



2003

Sheffield (HBH)

925

eight-point mark on apex



2012

London (HB<sup>S</sup>&H)

925

commemorating Queen Elizabeths Diamond Jubilee  
2012 Jubilee hallmark is part of design  
eight-point mark on apex



2022 (Jubilee mark)

London (HB&H)

925

commemorating Queen Elizabeths Platinum Jubilee  
2022 Jubilee hallmark is part of design  
eight-point mark on apex



925 with M in apex which is a unique size marking of Wengert  
eight-point mark on apex

## Joseph Hayward & Son (JH&S)

Frederick Street Birmingham



1962  
Birmingham  
size 7



1963  
Birmingham  
size 3



1963  
Birmingham  
size 7



1978  
Birmingham  
size 3



1978  
Sheffield  
size 7

## R L Heaton (RLH)

Buxton



1981  
Sheffield



head-shape

## Henley Associated Jewellers (HAJ)



1997

Birmingham

commemorating Great Britain Seccession of Hong Kong to China  
 commissioned by Thimble Society of London - with sketch

limited to **500**

designer: Kuo-chi Lin



2000

Birmingham

925

commemorating the Millennium

also available in 9ct gold

commissioned by Thimble Society of London

R: sapphire-coloured stones in centre of the zeros

## John Herbertson (JNH)

Christchurch Dorset  
 handmade from 1970s



1977

London  
 castle



1978

London  
 applied M  
 smooth sides



1979

London  
 applied seabird  
 smooth sides



1979

London  
 applied hedgehog  
 smooth sides



1993  
London  
stippled surface



1995  
London  
commemorating Dorset Thimble Society 10<sup>th</sup> Anniversary 1985-1995  
stippled surface  
limited to **14**



applied daisies



## Hans Herman (HH)



1977  
London  
cast

identical design made by **CJ** – with other details identical

## Highland Line (HL)

**Achnasheen Scotland**  
Tony Michael Holland



1985  
Edinburgh  
smooth sides

# Michael D Hillier (MDH)

Dublin



1974  
Dublin  
stippled surface creating vertical panels



1983  
Dublin  
shamrocks  
vertical hallmarks

no photo

1988  
Dublin  
Millennium of Dublin



1988  
Dublin  
wide smooth band with symbols: question mark, a figure with crook and a lighthouse ...



1991  
Dublin  
handcrafted  
commemorating Dublin as City of Culture in Europe  
Happy and Sad masks representing theatre – an open book for Book of Kells and symbolising learning – an artists palette – a musical instrument – a Dublin door and a Celtic brooch

# Historic Royal Palaces (HRP)



2002  
London  
925  
applied thistle with purple stone, crown, Irish harp. fleur de lis with Tudor rose on apex

# David Hollander & Sons Ltd (DH&S)

**Birmingham**

based on Victorian thimble patterns  
made by **JS&S**



1978 1981  
Sheffield  
size S L



1978  
Sheffield  
size S



1978  
Sheffield  
size 5

# George Holmes (GH)

Birmingham



1991

Birmingham

The Thimble Guild (Nov 1991) attributes this thimble to David Parker – may only be the designer?

# Sheila Holness (SJH)

**Brent Knoll Somerset**

member of Somerset Guild of Craftsmen



1990

London

applied Flowers and Butterflies  
10.8 grammes



2011

London

applied Sprig of flowers and leaves  
includes Diamond Jubilee mark  
12.4 grammes



2011

London

applied flower with band of leaves  
includes Diamond Jubilee mark  
12.2 grammes

# Vera Mary Honeker (VMH)

Esher Surrey



1983

London

applied flower

# Charles Henry Hooper & Sybil Elsie Hooper (CHH)

**Birmingham**

trading as Hooper Jewellery



1985 1987 1990

Birmingham

using five of Birmingham Anchor  
assay mark around band



1985 1987 1990

Sheffield

using five of Sheffield Rose assay  
mark around band



1985 1987 1990

London

using five of London Leopard assay  
mark around band



1985 1987 1990

Edinburgh

using five of Edinburgh Castle assay mark  
around band



1986 1987

Sheffield

pierced band



1987 1990

British Hallmarks set

each hallmarked with the corresponding Assay Office

# Mark Houghton Ld (MH MHLd)

Hatton Gardens London



1993

Sheffield

Dragonfly on stippled ground  
daisies pattern on apex  
made by **JS&S**



1998

London

applied Grapes  
London import mark



1999  
Sheffield  
925

applied Swans on smooth sides  
see identical design made by **AN**



1999  
Sheffield  
925

family scene all round after painting by Jan Steen



2002  
Sheffield  
925

applied Flower on smooth sides



Sheffield  
925

scene all round  
size 9

## House of Lawrian (HOL)

**Leigh-on-Sea Essex**

Christopher Lawrence is a member of the Institute of Professional Goldsmiths



1977  
London

commemorating Queen Elizabeths Silver Jubilee  
applied gilt flowers and leaves on stippled ground  
R: numbered in apex – No 68  
similar design to **MN&WB - TT**



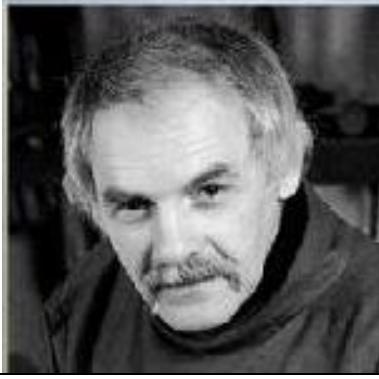
1978  
London



1978  
London



1979  
London  
gilt flames



## John Huddleston (JH)

Radley Oxfordshire

[www.jhsilver.co.uk](http://www.jhsilver.co.uk)

silversmith and jeweller – he accepts commissions



2016  
London

special commission – initial applied F and leaves  
hand indentations



2017  
London

hand indentations on apex



London

applied flower on smooth sides  
unusually shaped indentations



# Charles Iles & Gomms (CI&G)

## Birmingham

the Company closed in 1990 – they were sold to Thomas Johnson  
neither Charles Iles nor Iles & Gomms made sterling silver thimbles 1850-1990



1995  
Birmingham  
made by: **JS&S**



1995  
Birmingham  
two maker's marks  
MADE IN ENGLAND  
made by: **JS&S**

# Kenneth James Jack (KJJ)

## Birmingham



2000  
Birmingham  
millennial mark on apex



2006  
Birmingham  
rope-like rim

# K M Silver (KMS)

## Birmingham

silverware manufacturing company based in the Midlands, which was founded in 1977



1984  
Birmingham



1997  
Birmingham  
'JUST A THIMBLEFUL'

# M Kamin (MK)

## Birmingham



1982 1983 1984

Birmingham

similar design to **B&Co - nt - DP - E&Co**



1982 1984 1985 1986 1987 1988 1993

Birmingham

three bands of graduating rings



1984 1985 1986

Birmingham



1987

Birmingham



1992

Birmingham

maker's marks forms part of design  
925 & import mark



1995

Birmingham

925 and import mark



1996

Birmingham



2000

Birmingham

925



2000

Birmingham

925



Birmingham

925 + import mark  
hallmarks are part of the design



Birmingham  
925 + import mark  
 hallmarks are part of the design  
 faceted rim

## Malcolm Knight (MK)

Birmingham



1982  
Birmingham  
 floral sprig



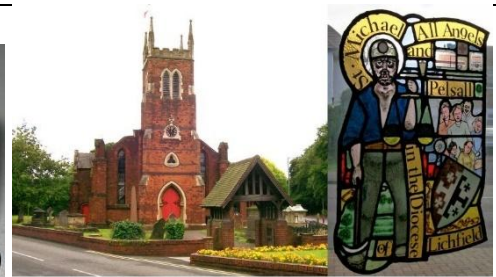
1984  
Birmingham  
 GOOD LUCK



1990  
Birmingham  
925 and import mark



1993  
Birmingham  
925  
 Pelsall Millennium Tapestry 1994



St Michael and All Angels Church, Pelsall & The Pelsall Millennium Tapestry, 1994

## Peter Ladell (PL)

Luton

Ladlaw Crafts

Peter took commissions in both silver and gold



2000

Sheffield

925

commemorating Her Majesty Queen Elizabeth the Queen Mother 100 years 1900-2000  
commissioned by Thimble Society of London

## Peter Robert Larratt (PRL)



1979

London

## Robert Legg (RL)

Legg is the engraver of these thimbles – see also **CB** and **M<sup>N</sup>&W<sup>B</sup>**  
Later known as Robert Campbell Legg



1981

London

*CD Royal Wedding St Paul's 1981*

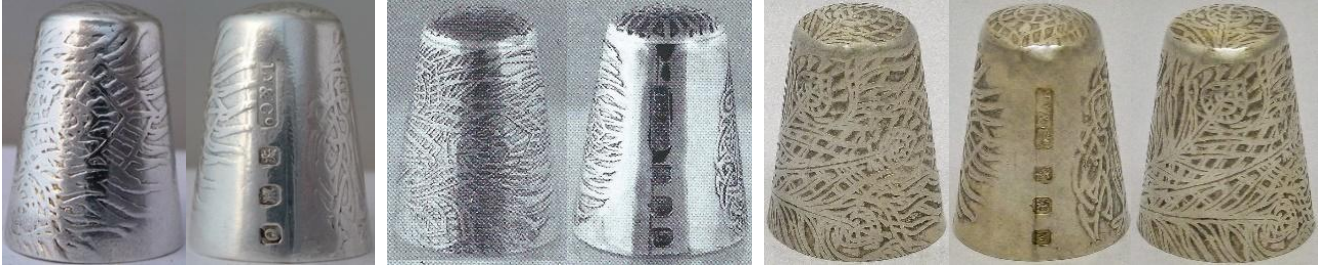
## E Leonard Brothers (ELB)



1983

London

## Liberty & Co (Ly&Co)



1987 1988 1989

Edinburgh

Hera feathery design created by Arthur Silver  
vertical hallmarks

## Links of London (LL)



2016

London

sewing kit



charm

## J.N. Lowe (Sheffield) Limited (JNL)



1978  
Sheffield



1978  
Sheffield

## Montagu Malleon (MM)

West Finchley London



1980

London

raised gold lettering (which is not Arabic)

## Geoff Mansell (GFM)

Geoff Mansell is the husband of one of the Thimble Society of London (Midland Group) members. He took up silversmithing in his 70s. The group was started by Norma Spicer for the TSL local members



1992

Birmingham

If you look closely at the shield, you will see a large letter 'T' across the top and between the other letters for TSLMG for Thimble Society of London Midland Group

large assay marks  
R: membership pin

## William H Manton (WM)

**Pittsford Street Birmingham**

trading as Birmingham Gold & Silversmiths Ltd

probably made by **JS&S**

where there are no hallmark dates, the thimbles are 2002 stock items



1980s

Birmingham



1982

Birmingham



1982

Birmingham



1983

Birmingham



1983 1984

Birmingham



1983 1988 1995 1996

Birmingham

similar design to **JHB - WHM**



1984 1985

Birmingham

stylised leaves

similar design to **WHM**



1987

Birmingham

similar design to **WHM**



1989

Birmingham



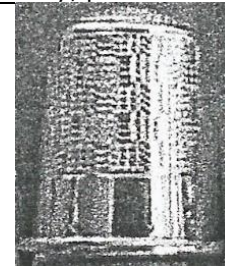
1993

Birmingham

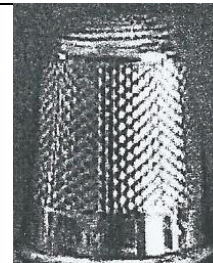
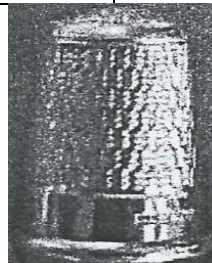
heavy, patterned rim



similar design to **WHM**  
probably made by **JS&S**



basketweave pattern



# Mappin & Webb Ltd (M<sup>N</sup>&W<sup>B</sup>)

Mappin & Webb are retail jewellers, so the thimbles featured were made by British thimble makers, with the M<sup>N</sup>&W<sup>B</sup> marks.



1977 1978

London

applied gilt flowers and leaves on stippled ground  
similar design to **HOL - TT**



1981

London

commemorating the Marriage of Prince Charles  
made by **Gerald Benney** for Mappin & Webb  
Spencer Family crest



1981

London

commemorating the Marriage of Prince Charles  
made by **Robert Legg** for Mappin & Webb

## Henry Booth Marland (HBM)



1987 1988 1991

London Edinburgh

set with three garnets – ropelike rim  
 design in art nouveau tradition of Charles Rennie Macintosh  
 handmade – heavy  
 limited to **250**



1988

London

applied dragon  
 handpunched apex

## A Marston & Company (A(M)&Co)

Birmingham

probably made by **JS&S**



1981

Birmingham

brushed rim and apex  
 similar design to **S**McO - REP



1981 Birmingham

# Peter Charles Maxwell-Aylwin (PCMA)

Camberley Surrey



1980  
London  
faceted rim and hand indented apex



1980  
London  
faceted rim



Camberley store now closed

# Eleanor B McDougall (EBM)

Isle of Mull Scotland



1988  
Edinburgh  
applied Viking ship

# W H Miller (WHM)

## Birmingham

trading as Miller Jewellers Ltd  
distinctive squat shape  
probably made by **JS&S**



1983 1985 1989

Birmingham

Brightcut

L: unindented apex

similar design to **JHB - WM**



1983

Birmingham

Brightcut diagonally



1984 1985 1989

Birmingham

Floral

textured apex



1984

Birmingham

stylised leaves

similar design to **WM**



1984

Birmingham



1984

Birmingham

stylised leaves all over pattern  
textured apex



1985

Birmingham

stylised Roses pattern

R: wider indentations on apex - L: more domed





1986 1989

Birmingham

stylised Acanthus designs over striations  
some with more textured apex  
similar design to **WM**



1986  
Birmingham  
Acanthus  
textured apex



1986  
Birmingham  
stylised leaves in vertical rows  
textured apex



1986  
Birmingham  
Flowers over striations  
Textured apex



1989  
Birmingham  
Guernsey coat-of-arms  
similar design to **MG**



1989  
Birmingham  
flowers



Birmingham  
similar design to **WM**

# Monica Gems Ltd (MGLd)

Norfolk

Monica Vinader concentrates now on jewellery with gems. She has a jewellery store in London (2018)



1999  
London  
925  
kittens



2000  
London  
applied scissors



# Moody & Archer (M&A)

Birmingham



1978  
Birmingham  
stippled surface  
similar design to P&S



Birmingham  
delightful blue enamelled band  
with strongly petalled flowers



stippled surface



1985  
Birmingham  
handpainted enamelling by Jo Withers Madeley Telford Shropshire

# Robert Walter Moody (RWM)

Dalry Ayrshire Scotland



1983  
Edinburgh  
applied cat with mouse

# Paul V Morley (PVM)



1983  
London  
gilt sterling silver  
commemorating 1983 Anniversary of Queen Elizabeth  
II's Coronation  
with jewelled thistles, rose and shamrock on stippled  
surface



1987  
London  
18ct gold with applied Daffodils and emeralds on two  
raised bands using two colours of gold  
limited to **50**  
commissioned by Thimble Society of London, Autumn  
1987



London  
stippled surface with gilt Bee at apex  
enamelled leaves on rim

# National Trust of Scotland (NTS)

**Edinburgh**

I wonder which Scottish silversmith produced these for the NTS?



1986  
Edinburgh  
Celtic design



1986  
Edinburgh  
commemorating the Marriage of Prince Andrew to Sarah  
Ferguson  
this was probably made by **PDAC**

## Next PLC (nt)

probably made by **JS&S**



1989  
Birmingham



1989  
Birmingham

Tho these thimble appear to be identical, the maker's marks are different. See topic on Marks on British silver thimbles  
similar design to **B&Co - nt - E&Co - MK**

## Peter Nicholas (PN)

Peter Nicholas was a company set up by Peter Lunn and Nicholas Plummer. Peter Lunn is a craftsman specialising in spinning, carving and 3 D design. He worked for Stuart Devlin from 1973 to 1983 before setting up Peter Nicholas and Co Ltd which continued until 1991. He now works for himself, mainly to commission and has been involved in education



1990  
London

commemorating the 90<sup>th</sup> (1900-1990) birthday of Queen Elizabeth the Queen Mother  
Tudor Rose pattern on apex

## Ray Nimmo (RN)

Handmade. Pre-2013 es's thimbles are not assayed. Those thimbles were marked Sterling + his maker's mark. Some of these thimbles are one-offs - most of the attributed names or descriptions are by RN. Note the many different thimble shapes used and the many types of rims

Other examples: Placename thimbles from around the world - Thimbles with slogans



(2006)



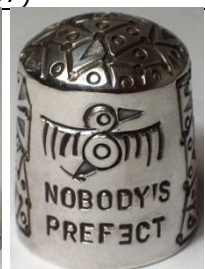
(2006)



(2007)



(2008) (2009) (2011) 2014 2020  
Birmingham  
925  
DORA



(2008) (2011) 2013  
Birmingham  
925  
NOBODY'S PREF3CT



2009  
FROGET-ME-NOT



(2011)  
'2012'



(2011)  
anchor



(2011) 2016 2020  
Birmingham  
925  
Art Nouveau flower pattern



(2011)  
BOOTS CHEMIST



(2011)  
BUGGER BOGNOR



(2011) 2014 2016  
Birmingham  
925  
butterfly



(2011) 2015 2016 2020  
Birmingham  
925  
catch of the day



(2011)  
Celtic knot



(2011)  
CHARLES LOVES DIANA



(2011)  
cherub



(2011)  
cross



(2011)  
cross



(2011)  
cupid



(2011)  
deer



(2011)  
dolphin



(2011)  
Durer's praying hands



(2011)  
eagle



(2011)  
elephant



(2011) 2015 2020  
Birmingham  
925  
geometric cubism



(2011)  
fingerguard



(2011) 2013  
Birmingham  
925  
GOOD LUCK



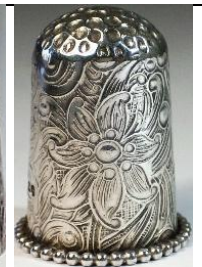
(2011)  
flowers and leaves



(2011) 2015  
Birmingham  
hearts



(2011)  
ICH DIEN  
Prince of Wales feathers



(2011) 2015  
Birmingham  
large flower  
R: beaded rim



(2011)  
Jacobean style



(2011)  
leaves



(2011) 2015  
Birmingham  
925  
Lincoln Imp



(2011)  
LONDON 1960



(2011 x5) 2015  
LOVE



(2011) 2013  
Birmingham  
925  
Madonna  
L: Jacobean style



(2011)  
MERDE



(2011)  
MINE



(2011) 2013  
Birmingham  
925  
mushroom-shaped



(2011) 2013  
Birmingham  
925  
MYRA



(2011)  
phoenix



(2011)  
PRINZ-OBERON  
(ferry)



(2011 x2) 2013  
Birmingham  
925  
Raphael's angel



(2011)2015  
Birmingham  
925  
small flowers



(2011)  
snowflake



(2011)  
St Christopher



(2011)  
sun



(2011)  
swastika



(2011)  
Thai



(2011)  
Thai



(2011) 2015  
thistle



(2011) (2012) 2013  
Birmingham  
925  
TITANIC



(2011)  
thread winder



(2011)  
VICTORY



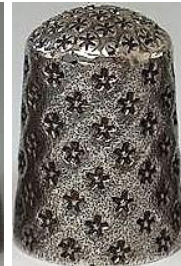
(2011)  
yacht



(2011 x2) 2015  
Birmingham  
925  
Yorkshire rose  
L: textured



(2011)  
ZG HOLLAND  
(beer)





2011

abstract, stylised or geometric designs



2012  
DORKUS



2012  
GRIPPA



2012  
NIPPA



2013  
Birmingham  
925  
atomic pattern



2013  
Birmingham  
925  
daffodils with bee on apex



2013  
Birmingham  
925  
bullseyes



2013  
Birmingham  
925  
diamonds



2013  
Birmingham  
925  
flowers



2013  
Birmingham  
925  
Hermes



2013  
Birmingham  
925  
leaves



2013 2014  
Birmingham  
925  
Victorian design

 <p>2013 <u>Birmingham</u> 925 fleur de lis</p>	 <p>2014 2020 <u>Birmingham</u> 925 HOME SWEET HOME</p>	 <p>2014 <u>Birmingham</u> 925 leaves and berries</p>	 <p>2015 <u>Birmingham</u> 925 Art nouveau girl</p>
 <p>2015 <u>Birmingham</u> 925 claddagh ring</p>	 <p>2015 <u>Birmingham</u> 925 dragonfly</p>	 <p>2015 2020 <u>Birmingham</u> 925 elephants</p>	 <p>2015 2016 <u>Birmingham</u> 925 flowers</p>
 <p>2015 <u>Birmingham</u> 925 forget-me-nots</p>	 <p>2015 <u>Birmingham</u> 925 four leaf clover</p>	 <p>2015 <u>Birmingham</u> 925 frog</p>	 <p>2015 2016 <u>Birmingham</u> 925 galleried band</p>
 <p>2015 <u>Birmingham</u> 925 holly</p>	 <p>2015 <u>Birmingham</u> 925 Ichtyus symbol</p>	 <p>2015 <u>Birmingham</u> 925 leaves</p>	 <p>2015 <u>Birmingham</u> 925 Madonna and child</p>
 <p>2015 <u>Birmingham</u> 925 mouse</p>	 <p>2015 <u>Birmingham</u> 925 owl with moon owl patterning all round</p>	 <p>2015 <u>Birmingham</u> 925 rose</p>	 <p>2015 <u>Birmingham</u> 925 spread eagle</p>



2015  
Birmingham  
925  
Trinity Celtic knot



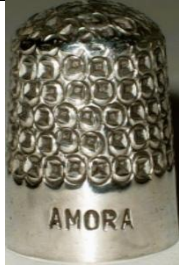
2015  
Birmingham  
925  
turtle



2015  
Birmingham  
925  
turtles



2015  
Birmingham  
925  
WISH  
rebus: wish upon a star



2016  
AMORA



2016  
cats



2016 2020  
Birmingham  
925  
donkey with saddle



2016  
Birmingham  
925  
dormouse



2016  
Birmingham  
925  
dove



2016  
Birmingham  
925  
elephant



2016 (2) 2020  
Birmingham  
925  
flowers and leaves



2016  
Birmingham  
925  
frogs



2016  
Birmingham  
925  
hedgehog



2016  
Birmingham  
925  
hedgehog atop



2016  
Birmingham  
925  
large leaves and flowers



2016  
Birmingham  
925  
leaves



2016  
Birmingham  
925  
mice



2016  
Birmingham  
925  
morning glory



2016  
Birmingham  
925  
pigs might fly



2016  
Birmingham  
925  
rose



2016 2020  
Birmingham  
925  
'Safari' with zebras and giraffe  
R: matching thimble holder



2016  
Birmingham  
925  
Scottie dog



2016  
Birmingham  
925  
sheep



2016  
Birmingham  
925  
SILVA



2016  
Birmingham  
925  
snake



2016  
Birmingham  
925  
turtle



2016 2020  
Birmingham  
925  
Victorian pattering  
JOY



2016  
Birmingham  
925  
Westminster Abbey



2020  
Birmingham  
925  
'Alien Road Map'



2020  
Birmingham  
925  
MMXX



2020  
Birmingham  
925  
'Swan Lake'  
with articulated swan  
opening to reveal ballerina



2020  
Birmingham  
925  
shell design



2020  
Birmingham  
925

commissioned engraving all round - Master Engraver  
Keith A Raes (KAR)  
'Hey Diddle Diddle'



2020  
Birmingham  
925

commissioned engraving all round Master  
Engraver Keith A Raes (KAR)  
'Humpty Dumpty sat on a wall'



2020  
Birmingham  
925

commissioned engraving all round - Master Engraver  
Keith A Raes (KAR)  
'Little Miss Muffet'



2020  
Birmingham  
925

commissioned engraving all round - Master  
Engraver Keith A Raes (KAR)  
'Simple Simon met a pieman'



2020  
Birmingham  
925

commissioned engraving all round Master Engraver  
Keith A Raes (KAR)  
'The Royal Coat of Arms' 'Dieu et Mondroit'



2020  
Birmingham  
925

commissioned engraving all round Master  
Engraver Keith A Raes (KAR)  
'Three Blind Mice'



2020  
Birmingham  
Symphon



2020  
African animals



'COATS SHEEN Fast colors'



DREENA 9



DUROID



flowers



FU EU



HIC  
drunks



KURIT



SILVA



stars



tortoises with other animals



beaten surface



2007

# Ari Daniel Norman (AN)

## London

Ari Norman was the first and only silversmith to win the Queen's Award for Export Excellence in 1989 and was awarded Freedom of the City of London in 1992 for services rendered to the British silver industry where there are no hallmark dates, the thimbles are stock items – if yours has a hallmark date, please share

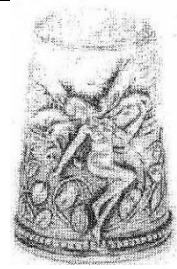
From revisiting his range, it seems that Norman imports thimbles and places his maker's mark on them.  
[www.aridnorman.com](http://www.aridnorman.com)



1982 1987 1989 1991 1992 2000  
 2008 2017  
London  
 galleried rim  
 1991 and 2000 have vertical hallmarks



1983  
London  
 turquoise stones and wire work  
 import mark  
 Mexico



1983  
London  
 fairies  
 import mark  
 Topazio Portugal



1985  
London  
 HARRODS lettered vertically  
 with etched flower  
 galleried rim

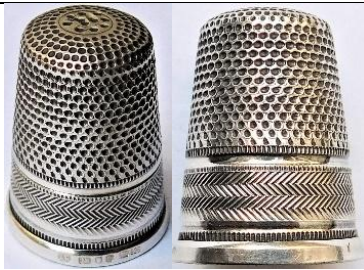


1989 1990  
London  
925  
 swans  
 there is an extra mark for the Queen's Award for Export Achievement  
 an identical design made by **MH**



1988  
London  
925  
 filigree  
 London import mark  
 Yemen





1988  
London



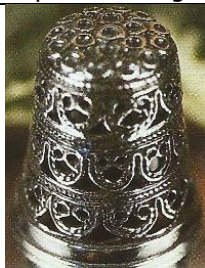
1989 1994  
London  
marcasite flower attached  
galleried band with vertical hallmarks



1990  
London  
925  
London's Houses of Parliament  
London import mark  
Topazio Portugal



1991  
London  
925  
porcelain Rose Primrose and Pansy applied  
vertical hallmarks  
galleried rim



1991  
London  
filigree



1993  
London  
925  
turquoise



1994 2001 2009  
London  
925  
copy of **SF** Medusa Head



1994 1999 2004  
London  
925  
marcasite swallow attached  
red ruby eye  
galleried rim





1995  
London  
925  
cupids angels cherubs



1999 and unassayed  
London  
onyx and crystals around apex  
with crystals at rim – size 3



London  
acanthus swirl  
London import mark  
Topazio Portugal



London  
butterfly  
London import mark  
Topazio Portugal



London  
cat  
London import mark  
Topazio Portugal



London  
shamrock  
London import mark  
Topazio Portugal



filigree  
London import mark  
Yemen



marcasite fleur de lis attached  
galleried rim



HARRODS lettered horizontally



Ari D Norman thimble box London with 2018 set of hallmarks on inner lid

# Vita Nutayakul (VN)

Thai Designs Dist. Ltd

Wembley Middlesex



1978  
London  
Thai design



1979  
London  
floral etching



# Ken Palmer (KP)



1986  
Birmingham  
nature scene  
domed stone  
fluted rim



1987  
Birmingham  
Bees' scene all round  
opal inset in apex  
fluted rim



1987  
Birmingham  
rural scene  
paua shell in apex  
fluted rim

## Pattison & Son (P&S)

Thirsk North Yorkshire  
still in operation as jewellers in 2023



1983  
Sheffield



## Geoffrey Payne (GP)



1992  
Birmingham

## Sheffield Assay Office (SAO)



1996  
Sheffield  
Whitby Abbey  
with Whitby jet apex  
see also: Ralph Weston

# Douglas Pell Silverware (DP)

## Sawbridgeworth

they are wholesalers and most of their thimbles have been made outside of the UK



1988

Birmingham



1989

Birmingham

similar design to **B&Co - MK - nt E&Co**



1990 1997

made by **AN**



2004

Birmingham

925

'Harrods KNIGHTSBRIDGE'



2006

Birmingham

925

applied thurpence



2006

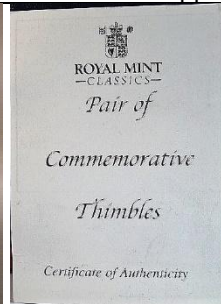
Birmingham

commemorating Queen Elizabeth's 80<sup>th</sup> Birthday

commissioned by Royal Archives Royal Mint

500 pairs

design based on 80<sup>th</sup> Birthday Royal Mint medal



This pair of sterling silver thimbles have been produced exclusively for the Royal Mint to commemorate the Eightieth Birthday of Her Majesty the Queen on 21st April 2006. The design is inspired by the Eightieth Birthday Medal produced by the Royal Mint. Issue of the thimbles is strictly limited to 500 pairs.

*Her Majesty the Queen*  
 Her Majesty the Queen  
 Deputy Master

ROYAL MINT  
 Llantrisant, Pontyclun,  
 CF72 8YT  
 www.royalmint.com



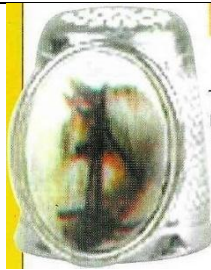
2007

Birmingham

925

bunch of grapes 14 rubies around rim

see similar design **AJP**



2007

Birmingham

925

horse inset



2007

Birmingham

925

leaves - pink flower on apex



2007

Birmingham

925

Wedgwood inset with angel

## Andrew (Andy) J Poole (AJP)

**Birmingham**

The Silverware Shop

where there are no hallmark dates, the thimbles are stock items - if yours has a hallmark date, please share



1982

Birmingham



1985

Birmingham

'Harrods'



2002

Birmingham

925



2003

Birmingham

925



2006

Birmingham

amethyst stones at rim



2006

Birmingham

925

applied fish and flowers



2006  
Birmingham  
925  
alternating ruby & sapphires stones  
around raised rim



2006  
Birmingham  
925  
ceramic rose inset



2006  
Birmingham  
thistle



2006  
Birmingham  
925  
hand engraved



2006  
Birmingham  
925  
applied grapes  
rubies around raised rim  
see similar design **DP**



2006  
Birmingham  
925  
pink enameled flower on apex



2007 Birmingham  
anchor



2007  
Birmingham  
flower with dropped rim on two sides



2007  
Birmingham  
'Welsh Thimblers 2007'  
Prince of Wales feathers  
limited to **29**



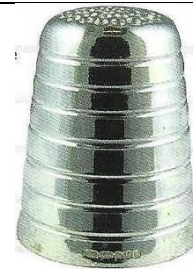
2007  
Birmingham  
St Christopher



2007  
Birmingham  
dolphin



2007  
Birmingham  
commemorating The 10<sup>th</sup> Conference Dorset Thimble Society  
applied dolphin



2008  
Birmingham  
seven engraved rings



2009  
Birmingham  
ceramic rose inset



2009  
Birmingham  
commemorating 11<sup>th</sup> Conference Dorset Thimble Society  
applied thimble



2011  
Birmingham  
commemorating 12<sup>th</sup> Conference Dorset Thimble Society



2012  
Birmingham  
dragonfly



2012  
Birmingham  
925  
applied grapes



2012  
Birmingham  
commemorating Diamond Jubilee of Queen Elizabeth II  
Jubilee hallmark used as part of design



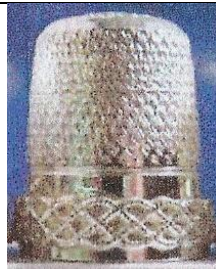
2013  
Birmingham  
925  
precious stones around centre



2013  
Birmingham  
925  
precious stones around rim



2017  
Birmingham  
applied treble clef



garnets form the grapes



very wide band of oak leaves



large flowers



additional mark for **TCG** – commissioned by them



Wedgwood inset with harpist

## RE Porter (REP)

Bournemouth  
probably made by **JS&S**



1981  
Birmingham  
similar design to **A(M)&Co - SMCo**

# Diane Jaqueline Radley (DJR)



1981  
London  
stippled surface

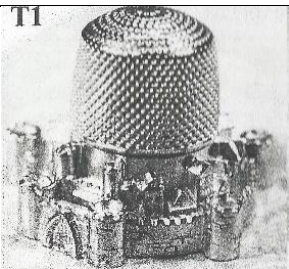
## Rayment & Hull (R&H)

### Isle of Thanet Kent

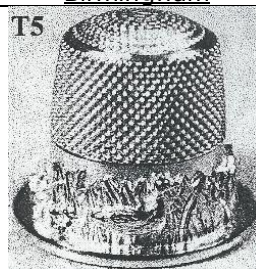
Neil Rayment and Robert Hull trained at Medway College of Art and Design. They founded Rayment & Hull in 1990 as goldsmiths and silversmiths. They won Designer of the Year in the UK Jewellery Awards in 1994 where there are no hallmark dates, the thimbles are stock items – if yours has a hallmark date, please share they undertook commissions ceased making thimbles in 2002



1997  
Birmingham



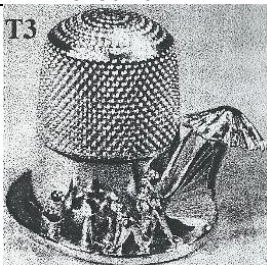
T1  
medieval  
applied Gothic castle and turrets  
around rim



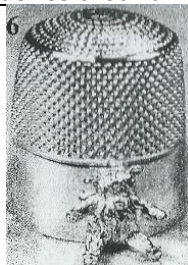
T5  
country  
Mother Goose and four goslings in  
rushes around rim



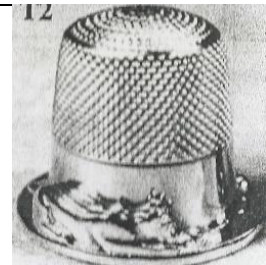
4  
day and night  
happy faces of sun and moon



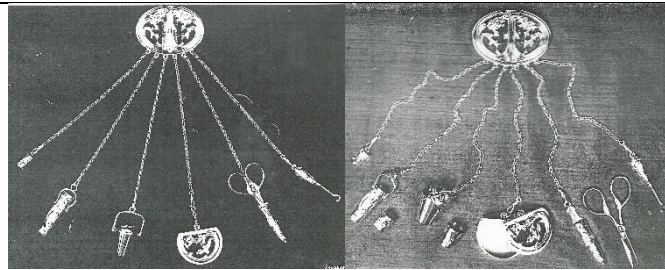
T3  
fairy tale  
fairy resting against a mushroom  
around rim



6  
memories  
teddy bear applied to rim



12  
mousing around  
a game of cat and mouse around rim



chateleine contains 6 chains of needlework tools  
including thimble in thimble bucket  
two views

## Ludwig Redl (LR)

### Vienna

Most known for designing the 1984 American Revolution commemorative set. See **GJD** (in part 1 A-H)

The Shakespearian and Wagner Ring sets bear LR maker's marks

Britannia silver, finished in 24ct gold and gilded inside. Plain polished apex and rim

The Ring of Nibelungen set of four with 250 sets planned tho probably only 20 sets produced by 1988.

The Shakespearian is a set depicting three of Shakespeare's plays. They were made in pewter for sale at The Globe - only 50 sets were made in sterling



1983

London

The Last Supper

R: silver-plated bronze



1984

London

Hamlet

To be or not to be that is the question



1984

London

Macbeth

Is this a dagger which I see before me?



1984

London

Romeo and Juliet

Romeo Romeo wherefore art thou Romeo



1984

London

Macbeth

Is this a dagger which I see before me?  
sterling silver edition



1984

London

Der Ring des Nibelungen

boxed set of four finished in 24ct gold, showing the four most important scenes in the Wagnerian opera  
(set no) 225 lettered on apex  
REDL lettered in addition to hallmarks



differently boxed set



1984 1985

London

925

Claddagh ring, gilded with 24 carat gold

L: b&w photo



Ludwig Redl at work 1984

## Russell C Rimes (RR)

**Sheffield**

thimbles by this maker exist in copper with stone apaxes



1985  
Sheffield

mother-of-pearl set flat into apex



1986  
Sheffield

unusual indentations on apex



1986  
Sheffield  
blue stone indented flat apex  
© in apex



1989  
Sheffield  
unusual indentations on apex



Rimes worked as silversmith and spinner in David Mellor's Park Lane workshop in Sheffield for sixty years - 1974

# John Ritchie



1986

Edinburgh

Robbie Burns atop  
vertical hallmark  
b&w photo

# Stephen J Rose (SJR)

**London**

John and Arthur Rose first registered their mark at the Birmingham assay office in 1932. John Rose was incorporated into SJ Rose and Sons of London in 1972

this maker has distinctively-shaped thimbles – most have a recognisable engine-turned stippled or brushed finish with bright-cut patterning. I have included all examples as each has a slightly different finish - many examples have the hallmarks upside-down, which would be facing the sewer when used on the finger. Sizing 4-6 (15.5mm-17mm)

Some of these size marks are lettered up in the apex

There is a Provisional Patent No **53211** on some of SJR's early thimbles. What was being patented?



1965

Birmingham

Pro.Pat 53211

also available in 9ct gold



1966

Birmingham

Pro.Pat 53211

size 8 in apex

R: marks upside down



1965

Birmingham

Pro.Pat 53211 – size 3  
mirror image maker's mark



1966

Birmingham

size 4  
marks upside down



1966  
Birmingham  
Pro.Pat 53211  
size 7  
marks upside down



1967  
Birmingham  
marks upside down



1967 1970 1971 1976  
Birmingham  
+ England (L)  
marks upside down  
two narrow faceted bands



1967  
Birmingham  
+ England  
marks upside down



1967 1968  
Birmingham  
marks upside down



1967 1971  
Birmingham  
marks upside down



1967  
Birmingham  
+ England  
marks upside down



1967  
Birmingham  
+ England  
two narrow faceted bands  
marks upside down



1968  
Birmingham  
handpainted roses on textured band  
two narrow faceted bands  
marks upside down



1968  
Birmingham  
marks upside down  
this is a popular design from SJR but  
there are always some differences



1969  
Birmingham  
 handpainted roses  
 two narrow faceted bands  
 marks upside down



1969 1970 1974  
Birmingham  
 two narrow faceted bands  
 marks upside down  
 R: + 'England'  
 L: showing marks to face sewer size 5



1970  
Birmingham  
 marks upside down  
 R: did SJR forget to add the patterning after assaying?  
 both sized in the apex for size 1



1971  
Birmingham  
 marks upside down



1972 1992  
Birmingham  
 JUST A THIMBLEFUL (R lettering upside down)



1972  
Birmingham  
 handpainted roses  
 (different from 1969)  
 two narrow faceted bands



1973  
Birmingham  
 apices are decorated with a snowflake-type surface  
 two narrow faceted bands  
 L: marks upside down - R: marked 'England' - size 5 in apex



1973  
Birmingham



1975  
Birmingham  
 patterned apex  
 two narrow faceted bands



1975 1982  
Birmingham



1976 1982  
Birmingham  
stone apex  
size 9



1977  
Birmingham  
handpainted stylised flower band  
two narrow faceted bands



1977  
Birmingham  
handpainted roses  
two narrow faceted bands  
(different from 1969 and 1972)



1978  
Birmingham  
marks upside down + size 2



1981  
Birmingham



1983  
Birmingham  
mirror image maker's mark

## Margarette Elizabeth Round (MER)



1973  
London  
well defined glittery surface

# David Scott-Walker (DSW)

## Sheffield

David's thimbles were also available thru The Thimble Guild in Scotland during 2001-2004. Some of the thimble names are from their catalogues

the set of 32 dated between 1993-2000 has semi-precious stones in the apex and plain polished sides the set depicts the last eight years of British hallmarking as EEC pre-1999 regulations where compliance saw many of the British hallmarks disappear. Shows the assay marks of the four major assay offices. 100 sets each thimble has the hallmark year, the assay office mark, the standard mark (lion passant) and the maker's mark, as part of the design



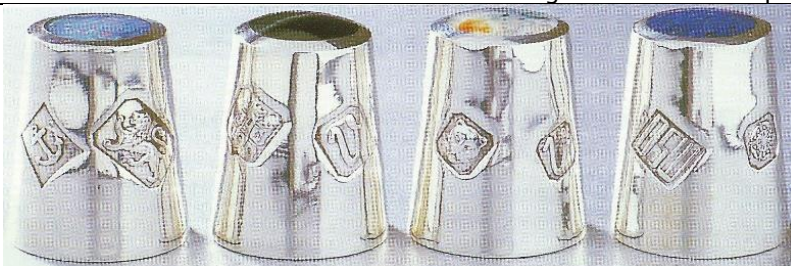
1993

Sheffield: Mexican crazy lace  
 London: Brazilian red banded agate  
 Edinburgh: Brazilian red banded agate  
 Birmingham: Philippines black mother-of-pearl



1994

Sheffield: Moss agate  
 London: Blood stone  
 Edinburgh: Carnelian  
 Birmingham: Mother-of-pearl



1995

Birmingham: Opal  
 Edinburgh: Blue tiger eye  
 London: Red moss agate  
 Sheffield: Lapis lazuli



1996

Sheffield: Bottle green malachite  
 Edinburgh: Black onyx  
 Birmingham: Blue John  
 London: Brown brachated jasper



1997

Sheffield: Turquoise  
 Birmingham: Italian brown onyx  
 London: Green banded agate  
 Edinburgh: Tiger eye



1998

London: Namibian blue lace  
 Sheffield: Stripy brown agate  
 Edinburgh: Turitella  
 Birmingham: black and white agate



1999

Birmingham: Yellow agate  
 Edinburgh: Purple agate  
 London: Pink agate  
 Sheffield: Blue moss agate



2000

925

London: Sodalite  
 Sheffield: jet  
 Birmingham: Yellow crazy lace  
 Edinburgh: Fancy jasper



1982  
Sheffield  
 ring with applied flower  
 stone apex



1982  
Sheffield  
 ring with applied flower  
 speckled stone apex



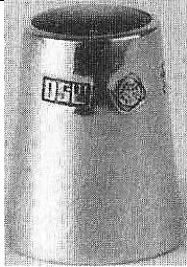
1983  
Sheffield



1983  
Sheffield  
 black onyx apex



1983  
Sheffield  
 amethyst



1983  
Sheffield  
mother of pearl apex



1984  
Sheffield  
blue John stone apex



1985  
Sheffield  
mauve stone



1992  
Sheffield  
stone apex



1992  
Sheffield  
stone apexes R: jet  
part of set of 12



1995  
Birmingham  
Blue John stone



1995  
Birmingham  
Blue John stone



2000  
925  
Millennium



2001  
zigzag diamond



2001  
fern



2001  
zigzag



2002

925

commemorating Queen Elizabeth's Golden Jubilee set of 4  
using hallmarks with Diamond Jubilee mark as part of design

Edinburgh: Blue agate

Birmingham: Red agate

London: Purple agate

Sheffield: Mother-of-pearl



2003  
double scrolls



2003  
Sheffield  
double scrolls  
black stone apex



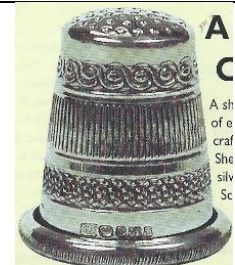
2004  
scrolls



2004  
Herringbone



2004  
Sheffield  
925  
black onyx apex



2005  
925



black stone  
leaves and flower band  
black stone



double scrolls



moonstone in apex



red carnelian  
stippled surface

# Gerald Sheehan (GS)

## Llantrisant Wales

created for the Royal Mint

between 2002-2006 Sheehan was the Chief Executive and Deputy Master of the Royal Mint

Set 1: The designs were inspired by the national emblems used on coins

the presentation boxes' ribboning for this set of six Classics is lettered Douglas Pell

Is Pell the maker for these Royal Mint thimbles, using the GS mark as the maker's mark?

limited to **500** sets

thimbles are quite wide having a 20mm diameter

There are other similar Royal Mint thimble sets but they bear no hallmarks, just '925' – included here for completeness



2002 2004

London + import mark

925

Scotland Scottish thistle

taken from Scottish £1 coin



2004

London + import mark

925

England Tudor rose

taken from 1983 £1 coin



2004

London + import mark

925

Northern Ireland Irish shamrocks

taken from Northern Ireland £1 coin



2004

London + import mark

925

Wales Welsh leeks

taken from £1 coin



2004

London + import mark

925

laurel

wreath taken from the English sovereign coin



2004 2005

London + import mark

925

Floral

wreath taken from the English Coronation crown coin



Classics 2004 presentation box set showing Douglas Pell lettered on ribboning



there is an additional mark on the 2005 thimbles – for the Tower of London  
 Hallmarks L>R: Tower of London mark – maker's mark GS – Lion passant – 925 – London's assay mark of  
 Leopard's head – 'Y' for for 2005 (Floral)

There is a set of six thimbles featuring historic sites around London  
 It's not known whether they bear any hallmarks. Maybe 925?



Big Ben



Buckingham Palace



Tower Bridge



Tower of London

There are six Royal Mail – marketed as Royal Mint -Classics- thimbles, which are lettered – Clifton Suspension  
 Bridge – SS Great Britain – Royal Albert Bridge – Brunel Isambard Kingdom – Paddington – SS Great Eastern  
 The thimbles are smooth-sided with the design in relief  
 Marked 925



Clifton Suspension Bridge



SS Great Britain



Royal Albert Bridge



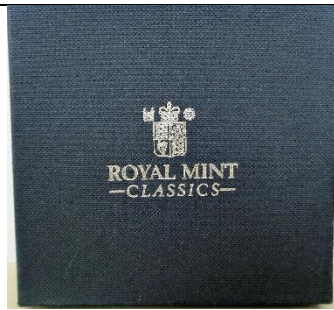
Brunel Isambard Kingdom



Paddington



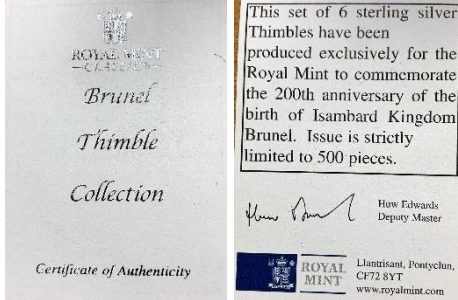
SS Great Eastern



boxed set



open boxed set



This set of 6 sterling silver Thimbles have been produced exclusively for the Royal Mint to commemorate the 200th anniversary of the birth of Isambard Kingdom Brunel. Issue is strictly limited to 500 pieces.

*Huw Edwards*  
Huw Edwards  
Deputy Master

ROYAL MINT  
Llantwitton, Pontyechun,  
CF72 8YT  
www.royalmint.com

There are six Royal Mint Classics, Battle of Trafalgar commemorative thimbles (1805-2005) as a boxed set which are lettered - Nelson - Expects (enamelled semaphore flags) - Victory - October 1805 - 200<sup>th</sup> anniversary (compass) - Battle  
The thimbles are ribbed with the design in relief  
Marked 925



# Harvey R Sillis (HRS)

## Potters Bar Hertfordshire

Sillis' thimbles were also available thru The Thimble Guild in Scotland 2001-2005. Some of the thimble names are from their catalogues

there is a large range in the thimble weights = 9.1–23.2 grammes

additional mark of IPG indicating Sillis is a Fellow of the Institute of Professional Goldsmiths



2001

London

925

Four Panels

14.5 grammes

additional mark of IPG indicating Sillis is a Fellow of the Institute of Professional Goldsmiths



2001

London

925

Pierced Diamond Trellis

9.1 grammes

additional mark of IPG indicating Sillis is a Fellow of the Institute of Professional Goldsmiths



2002

London

925

commemorating Queen Elizabeth's Golden Jubilee - heraldic statues of The Queen's Beasts

five of the mythical beasts are: Unicorn of Scotland - red Dragon of Wales - Griffin of Edward III - Lion of England -  
on five sided thimble

rose on apex and the Golden Jubilee special extra mark

18 grammes



2002  
London  
375  
 9ct gold  
 20.5 grammes  
 limited to 2



9ct and 925



2002  
London  
925

commemorating Queen Elizabeth's Golden Jubilee with national emblems  
 Scottish Thistle - Irish Shamrock - Welsh Leek on sides - English Rose on apex  
 the Golden Jubilee special extra mark  
 also available in silver-gilt and 9ct gold  
 16.4 grammes



2002 2003  
London  
925

Cupcake  
 hallmarks on each of the 'slices'  
 17.4 grammes  
 additional mark of IPG indicating Sillis is a Fellow of the  
 Institute of Professional Goldsmiths



2002  
London  
925

Petals  
 six-panels like petals with speckles spots with dished  
 apex  
 18.5 grammes



2002

London

925

Silver petals

18.3 grammes

accompanying certificate has a couple of errors



2003

London

925

Grid

pierced diagonal grid in shape of a square

13.9 grammes



2003

London

925

Thread

23.2 grammes



2003

London

925

All Square

also available in 9ct gold

18.3 grammes



2003

London

925

21st birthday of The Thimble Guild

cutaway design

16.4 grammes

also available in 9ct gold

additional mark of IPG indicating Sillis is a Fellow of the Institute of Professional Goldsmiths



2004 2005

London

925

Geometric  
pierced zizags  
zigzag on apex

additional mark of IPG indicating Sillis is a Fellow of the Institute of Professional Goldsmiths  
11.6 grammes



2004

London

925

Surf's Up!  
pierced  
13.3 grammes



2004

London

925

Ripples



2005

London

925

Battle of Trafalgar  
200<sup>th</sup> Anniversary showing HMS Victory  
with anchor in relief on apex



2005

London

925

10<sup>th</sup> anniversary of the death of Diana Princess of Wales 31.8.2007  
L side: roses - R side: hearts - apex: her coat-of-arms



2005

London

925

60<sup>th</sup> wedding anniversary of Queen Elizabeth and Prince Philip  
diamond set into apex above '60'



2012

London

925

The Diamond Jubilee of Queen Elizabeth 1952-2012  
showing in panels: Royal regalia – HM coat-of-arms – the Coronation Chair with diamond in apex  
additional mark on apex of IPG indicating Sillis is a Fellow of the Institute of Professional Goldsmiths  
and the Diamond Jubilee special mark



Presented by Harvey R Sillis FIPG  
To Her Majesty Queen Elizabeth II  
To commemorate both Her  
Golden and Diamond Jubilee



## N St J Paint & Sons (NSHP)

St Peter's Port Guernsey Channel Isles

they undertook commissions



1999

London

applied gilded Nautilus shells  
four different rims – plain – wavy rope-like – beaded - galiered  
includes Millennium mark

## Howard Malcolm Stearn (HMS)



1982

London



1982

London

## Sterling Merchandising Company (SMCo)

Kent

probably made by **JS&S**



1981

Birmingham

similar design to **A(M)&Co – REP**



1981

Birmingham



1981

Birmingham



1982

Birmingham

# Swatkins Group (P&S)

Walsall West Midlands  
probably made by **JS&S**



1979 1992  
Birmingham  
stippled surface  
similar design to **M&A**



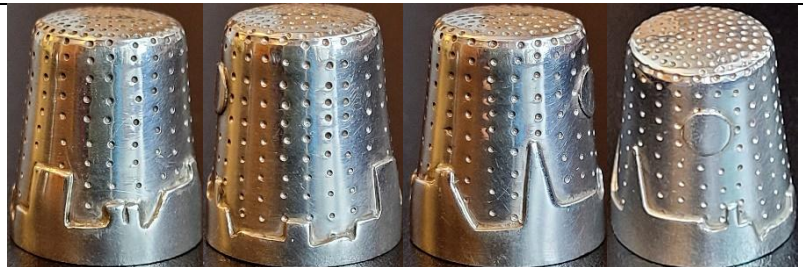
1979  
Birmingham

# Caroline Marie Taylor (CMT)

London



1979  
London  
Heavenly Skies



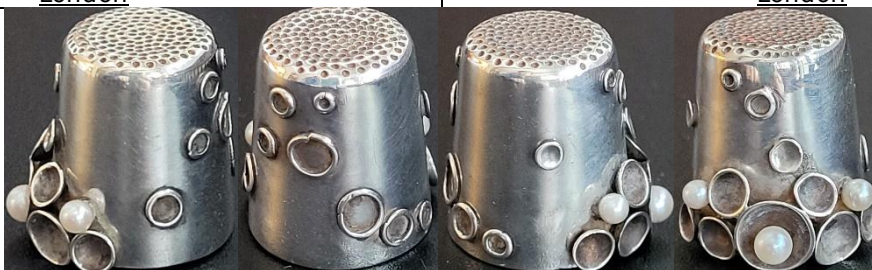
1979  
London  
stylised skyline



1980  
London



1980  
London



1980  
London  
incorporating pearls

# The Thimble Collectors Guild (TCG)

## Biggar Scotland

made by various thimblemakers but when the TCG maker's mark is used, they are only featured here. TCG maker's mark was registered in 1989 for thimbles sold thru their thimble catalogues. This promoted British silversmiths to collectors around the world – Frank Jones of Swann Thimbles was the principal thimble maker during this period in the UK



1989  
Edinburgh  
made by **PDAC**



1989  
Birmingham  
Lord's Prayer written on thread thru  
daisies apex  
made by **S(T)**



1989  
Birmingham  
applied Coach  
daisies apex  
made by **S(T)**



1989  
Birmingham  
A Gift of Love  
part of a series recreating Victorian slogan thimbles  
made by **S(T)**



1989 1990  
Edinburgh  
four assay marks as design  
made by **PDAC**  
limited to **950**  
The Guild commissioned one in 9ct gold



1989 1995  
Birmingham  
made by **S(T)**



1991  
Birmingham  
made by **S(T)**



1992 1994  
Birmingham  
made by **S(T)**  
his replica of a Dorcas Flora  
pattern



1992  
Birmingham  
made by **S(T)**  
his replica of a Dorcas  
Diamond pattern



1992  
Birmingham  
with bands of rubies and diamonds  
commemorating 40 Years of QEII's Ascension to  
the Throne  
made by **S(T)**



1993  
Birmingham  
with rubies  
commemorating 40 Years of QEII's Coronation  
made by **S(T)**



1994  
Birmingham  
made by **S(T)**



1995  
Birmingham  
commemorating 50 Years of VE Day  
made by **S(T)**



1995 1996 1998 1999  
Birmingham  
made by **S(T)**



1995  
Birmingham  
1996  
with thistles on band



1996 1997 1998  
Birmingham  
Windsor Castle  
made by **S(T)**



1997  
Birmingham  
made by **S(T)**



1998  
Birmingham  
made by **S(T)**  
inscribed 1900-1998  
commemorating Queen Elizabeth the  
Queen Mother's 98<sup>th</sup> birthday  
with stone apex



1999  
Birmingham  
made by **S(T)**



2000  
Birmingham  
925  
made by **S(T)**



Birmingham  
925  
made by **S(T)**



Birmingham  
stone apex  
made by **S(T)**

## Thimble Society of London (TSL)

made by various thimblemakers for sale to members of the TSL. These commissions provided an outlet for British thimblemakers over the period of 1981-2009. TSL should be congratulated on the huge number of thimbles they commissioned over a nearly 30-year period

the makers' names were rarely revealed to members especially in the early days, tho James Swann & Son (JS&S) were commissioned for many of the TSL commemoratives. I will move (or remove) them from here once the maker's marks have been identified (other than JS&S who was too prolific a thimble maker to feature in this topic)



1982  
Birmingham  
commemorating first Anniversary of London Thimble Society 1982  
malachite or moss agate stone in silver-gilt apex  
commissioned by Thimble Society of London  
maker: **D&F**



1982  
Birmingham  
commemorating Raising of the Mary Rose  
+ 9ct gold  
commissioned by Thimble Society of London  
TSL is engraved under the exact replica of the ship  
maker: **JS&S**



1983  
applied enamel City of London coat-of-arms  
The Thimble Society of London lettering on blue  
enamelling around apex with 1983 in the centre  
1983 on verso



1983  
Birmingham  
Bernard Weatherill elected Speaker 15<sup>th</sup> June 1983  
'T.S.L.' included as Weatherill was also a member of the  
Thimble Society of London  
Parliamentary mace in relief on verso  
**tailor's** thimble (as Weatherell was from a famous  
family of tailors – Weatherell Bespoke Tailors)  
beaded rim  
maker: **JS&S**



1983

Birmingham

applied blue enamelled rosette  
commemorating Mrs Thatcher returned General Election  
maker: **JS&S**



1984

Birmingham

applied London coat-of-arms  
commemorating Dame Mary Donaldson Elected Lord Mayor of London 1983 to 1984  
2<sup>nd</sup> R: 9-ct gold  
R: silver-gilt version  
maker: **JS&S**



1984

Birmingham

blue, brown or green apex



1985

Birmingham

A Stitch in Time  
blue enamelled lettering around band and blue  
enamelling on apex  
also available in silver-gilt  
limited to **60**  
maker: **JS&S**



1985

Birmingham

Queen Elizabeth the Queen Mother 85<sup>th</sup> birthday  
4<sup>th</sup> August 1985  
limited to **60**  
maker: **D&F**



1985

Birmingham

Ted Hughes the Poet Laureate 9<sup>th</sup> December 1984  
blue enamelled lettering around band and blue  
enamelling on apex  
also available in silver-gilt  
limited to **60**  
maker: **JS&S**



1986  
Birmingham  
 Her Majesty the Queen 60<sup>th</sup> Birthday  
 maker: **JS&S**



1987  
 Quilter's thimble



1989  
Edinburgh  
 made to commemorate TSL's Annual General Meeting  
 TSL applied on the front  
 AGM Sep 1989 Cambridge



1990  
Birmingham  
 hammer and sickle on smooth sides  
 Mikhail Gorbachov Nobel Peace Prize Winner 1990



1990s  
 Phoenix and Dragon pair  
 engraved design



1991  
 'TSL 1981-1991'  
 10<sup>th</sup> anniversary with two 'jewels'  
 maker: **Greif**, Germany



1992  
 commemorating Anniversary of Sinking of the Titanic  
 hand-engraved, with sketches  
 limited to **500**  
 maker: **Refia**



1994  
 replica of a mid-17<sup>th</sup> century Cromwellian  
 Commonwealth thimble with T S L in large capitals  
 around the body of the thimble  
 Roman numerals MCMXCIV for 1994 lettered around rim  
 gold edition was offered at the time

# Mike and Sylvia Thorpe (T)

## Sark Channel Islands

formerly of Clos de Vaul Creux

these handmade thimbles are not assayed but have the T maker's mark on a map outline of Sark.



The makers left Sark in 2000



child's size - measuring 12mm in height, 9mm in diameter  
1.1 grammes

# Trevor Towner (TT)

12 High Street Petersfield Hampshire

Freeman of the Goldsmiths Company

Towner was apprenticed at 15 for five years as an ecclesiastical silversmith

He then moved to London and worked for Stuart Devlin, the famous Australian-born gold and silversmith

In 1982 Towner opened his own business in Hampshire

[trevortowner.co.uk](http://trevortowner.co.uk)



1977

London

roses and leaves

applied gilt flowers and leaves on stippled ground

was the created to commemorate the Silver Jubilee of HM Queen Elizabeth II

similar design to **HOL - M<sup>N</sup>&W<sup>B</sup>**



1991

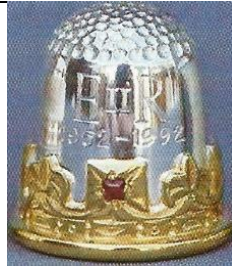
London

'Petersfield'

showing 18<sup>th</sup> century statue of William III which is situated in Petersfield's market square

this is one of a limited edition - no. 4 lettered on verso (no. 2 is in thimble box)

Petersfield is where Towner has his studio



1992

London

commemorating 40 Years Queen Elizabeth's Coronation

inset ruby

commissioned by Thimble Society of London



2006

London

commemorating Queen Elizabeth's 80<sup>th</sup> Birthday

silver gilt and rhodium 80 on apex

limited to **100**



2007

London

commemorating Queen Elizabeth's Diamond Wedding  
 rhodium plated silver bells on sterling silver or silver-gilt have EIIR on one – PP on the other  
 thimbles' limited number above hallmark  
 in TT jeweller's box



2011

London

commemorating the Marriage of Prince William  
 rhodium plated ribbon William & Catherine 29.4.2011  
 seed pearl and cabochon garnet on flowing ribbon are birthstones of the couple – TT lettered on verso  
 limited to **100**  
 thimbles' limited number above hallmark  
 in TT jeweller's box



2012

London

commemorating 60<sup>th</sup> Diamond Jubilee of Queen Elizabeth  
 showing the Thames Jubilee Armada  
 diamond set in apex  
 thimbles' limited number above hallmark  
 in TT jeweller's box



Trevor Towner and display of his thimbles  
Dorset Thimble Society 2008



Jill and Trevor (centre)

## Troika Designs Ltd (TD<sup>LTD</sup>)

Birmingham



1982

Birmingham

L: DL - R: DDG in cursive lettering

## Malcolm Keith Turner (MKT)

St Giles Street Norwich  
some were imported



1996

London

925

import mark  
applied elephant  
made in Thailand

# Lee Tyers (LT)

Nottingham

Lee is the Director of Repousse Ltd. From 2014 their thimbles are not hallmarked. They use the lost wax casting method, which gives clumsy definition



2004  
Birmingham



(2025)  
925  
arts and crafts



(2025)  
925  
butterflies



(2025)  
925  
dhow  
copy of Topazio thimble



(2025)  
925  
dhow  
extra mark at right



(2025)  
925  
face  
copy of Shirley Frost thimble



(2025)  
925  
dhow

# P H Vogel & Co (PHV&C)

Birmingham



1964  
Birmingham  
Just a Thimbleful



1972  
Birmingham  
JUST A THIMBLEFUL 1 1/2 OZ

# Laurence R Watson & Co Ltd (LRW)

Sheriff Hutton York

manufacturers of hallmarked silverware since 1966



1981  
Birmingham



1983  
Birmingham



1984  
Birmingham



2001  
Birmingham  
925  
gilt Bee atop beehive shape

# Wensum Lodge Silversmiths (WLS)

Norwich



1984 Sheffield

# Ralph Weston (RW)

**Kells Gold & Silversmiths (Whitby) Ltd  
Whitby**

Kells Gold and Silversmiths was formed in 1989 on the Island of Mull. Ralph Weston designed a range of Celtic jewellery inspired by the beautiful islands of the Inner Hebrides and the illuminated manuscripts from the Book of Kells. He set the wonderful gems of these islands in his own exquisite pieces of jewellery. He trained and worked in Sheffield and Derbyshire, where he set the unique stone of the area, Blue John and having connections in Yorkshire, hand-cut and set, Whitby jet, supplying many shops in Whitby. Ralph Weston Designs are now based in Eyam Derbyshire

Many of his thimbles are not assayed – simply marked SILVER  
see also: Sheffield Assay Office



1997 1999 2000

Edinburgh

Whitby Abbey  
with Whitby jet apex

(1997 version at top L is missing maker's mark RW)  
bottom: 2000 has 2000 mark + 925



'Silver'  
with onyx apex



'Silver'  
with backed stone apex  
rope rim



'Silver'  
rope rim



'Silver'  
blue stone  
rope rim

# John Wightman & Sarah McKechnie Bell (J&SB)

outside **Edinburgh**

they described themselves as amateur lapidaries and silversmiths



1987

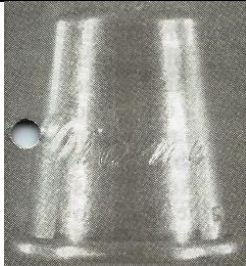
Edinburgh

hallmarks are lettered inside the thimble

# Wilkinson Silversmiths (WS)

**Birmingham**

in 1987 The Thimble Guild in Scotland offered the opportunity to have a first name engraved



1987

Birmingham

DIANA



1987

Birmingham

IVY



1987

Birmingham

MARY

# Barry M Witmond (BMW)

**Stamford Lincolnshire**

goldsmith and silversmith

formed his company in 1976



2003

London

applied Wheat Sheaf

## References

- Vanessa Frisbee *The wonderful world of Norman Grant*. [www.modernsilver.com/normangrant.htm](http://www.modernsilver.com/normangrant.htm)  
*Jane Chantler Ltd. Silversmith & thimble maker*. [Welsh Thimblers](#) issue 52, autumn 2003  
Diane Pelham Burn *Welcome to the newcomer*. [At Your Fingertips](#). January 2009  
Sue Pickles *Thimbles by Andrew J Poole*. [Welsh Thimblers](#) issue 51, July 2003  
*Rayment & Hull silversmiths & goldsmiths*. [Welsh Thimblers](#) issue 30, April 1998  
The Thimble Guild *Catalogues*  
*Thimble maker: Jane Chantler, England*. [TCI Bulletin](#) summer 2008  
20<sup>th</sup> century thimble makers: Wood Yard Gallery. [Welsh Thimblers](#), issue 45, January 2002  
[www.silvermakersmarks.co.uk](http://www.silvermakersmarks.co.uk)

## Contributors

Wendi Aguiar | Linda Bennett | Joanna Blackie-Sew Many Bits | Bleasdales | Yolanta Bogdziewicz | Pawel Brzyski  
Beryl Crago | Dorset Thimble Society | Joan Gale | Charlotte Goldberg | Karen Green (LAO) | Lydia Hamilton  
Linda Heggs | William Isbister | Denise Jenkins-Welsh Thimblers | Barbara Kelly | Caroline Meacham-Elegant Arts  
Terry Meinke | Ray Nimmo | Maurice O'Reilly | Sue Pickles | Diane Poesk | Wendy Ritchie | Wolf-Dieter Scholz  
Clara Sennheim | Marina Shcherbatyuk | Norma Shattock | Jean Shoup-Thimbles Only | Jean Taylor | Rose Todd  
Sue Wilson | Julie Winston | Sandi Wood

This listing of Modern British sterling silver thimble makers does not purport to be complete or accurate in all aspects.  
Rather it invites comments and contributions to add to our knowledge. My thanks to the contributors.

EMAIL [thimbleselect@bigpond.com](mailto:thimbleselect@bigpond.com) TO SHARE YOUR KNOWLEDGE

© **Sue Gowan**  
**March 2016**