

British royalty on thimbles

HM Queen Elizabeth the Queen Mother

4 August 1900 - 30 March 2002

Birthdays

75th Birthday 4 August 1975



Peter Swingler (PS)
sterling silver & handpainted enamel

80th Birthday 4 August 1980



Caverswall
china



Caverswall
china



Caverswall
china
self-patterned apex



Highland China
fine bone china



Mount Royal
china



Peter Swingler (PS)
sterling silver & handpainted
enamel

85th Birthday 4 August 1985



Caverswall
china
self-patterned apex



D J Coggan
part-painted china



Deakin & Francis (D&F)
sterling silver & enamel



Stephen Frost/Warwick Models
handpainted pewter
b&w photo



Stephen Frost/Warwick Models
pewter
with red plastic bead in crown



Sutherland/Scotland Direct
china



James Swann & Son
sterling silver & enamel



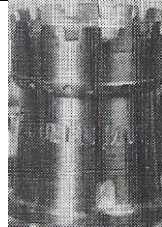
James Swann & Son
sterling silver & enamel



Theodore Paul
fine bone china
b&w photo



Woodsetton Peeps
brass



Woodsetton Peeps
pewter



china

90th Birthday 4 August 1990



ASL
fine bone china



Jenny Blair Designs
silver lacquer designs on handblown glass
E A M B - L (her initials)
strings of pearls and Scottish thistle



Jenny Blair Designs
gold lacquer on handblown glass
E A M B - L (her initials) around apex
Rose of York



Tony Bouchet
agateware



Caverswall
china



Fenton
fine bone china



Thomas Kerr Ebbutt (TE)
sterling silver
identical thimble to that by Hamilton & Inches (H&I)



Hamilton & Inches
(H&I)
sterling silver
(made by Deakin & Francis)
limited to 475



Peter Nicholas (PN)
sterling silver



Meycraft
fine bone china



Settmacher
copper with applied 90 disc



St George
fine bone china



Sutherland
china



James Swann & Son
sterling silver



Swann Thimbles/James Swann & Son
sterling silver & enamel



Swann Thimbles (S(T))

sterling silver

1900-1990

commissioned by Thimble Society of London

this is one of a pair: a matching small size for Princess Eugenie's birth 1990



Swann Thimbles (S(T))

sterling silver



Peter Swingler (PS)

sterling silver & handpainted enamel
commissioned by Thimble Society of London



Thimbleworld/Shirley Hewett

Porcelain
same image as 1995



Woodsetton Peeps

lacquered brass



John & Margaret (Meg) Urwin
 sycamore
 set of 12
 limited edition of 1990 sets

93rd Birthday 4 August 1993



Meg & John Urwin
 china

95th Birthday 4 August 1995



Birchcroft
 china



Tony Bouchet
 agateware



Julie Menzies
 handpainted china
 crystal in apex
 limited to 350



Felix Morel Bath
 lacquered brass &
 gold-plated
 limited to 450



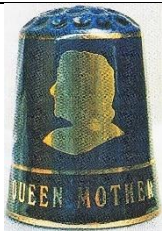
Sutherland
 china
 purple Swarovski crystal in apex



Sutherland
 china
 amber Swarovski crystal in apex



Sutherland
 china
 clear Swarovski crystal in apex



Thimbleworld/Shirley Hewett
porcelain
same image as 1990
limited to 2000



Woodsetton Peeps
Queen Mother 95 4 Aug 95
lacquered brass
limited to 950



fine bone china
laurel leaf
limited to 2000

98th Birthday 4 August 1998



Julie Menzies
china
(decal)



Sutherland
china



Swann Thimbles (S(T))
sterling silver
slate apex
marked '1990-1998'

99th Birthday 4 August 1999



Julie Menzies
china
(decal)



Museum Collections
china



Swann Thimbles (S(T))
sterling silver
stone apex



Woodsetton Peeps
Lorraine Bates
lacquered brass

100th Birthday 4 August 2000



Birchcroft
china



Tony Bouchet
agateware



Connoisseur Collectables
china & resin



Fenton/Babbacombe
China/Blue Waters
fine bone china



Stephen Frost/Warwick
Models
handpainted pewter
also created by Carol Ann
Miniatures (Isle of Portland
UK)



Peter Ladell (PL)
sterling silver



Julie Menzies
china
(decal)
set of two
as Lady Bowes Lyon



Julie Menzies
china
(decal)
set of three



Julie Menzies
china
(decal)



Museum Collections
china



Sterling Classic
china & resin



Woodsetton Peeps
lacquered brass



china



sterling silver



enamelled sterling silver & 18ct gold pairs
Queen Mother Commemorative Year 1900-2000 on apex (R)
commissioned by Thimble Society of London

101st Birthday 4 August 2001



Museum Collections
china



Rachel Pugh
china
(decal)



Woodsetton Peeps
lacquered brass
... our Queen Mother 101 years young



fine bone china



Sutherland
china
set of six

In Memoriam 30 March 2002



Tony Bouchet
Agateware
1900-2002



Stephen Frost/Warwick Models
pewter
with crystals
14-8-1900 - 10-3-2002



Julie Menzies
China
(decal)



Julie Menzies
Maplewood
(decal)



Museum Collections
china



Rachel Pugh

china
set of eight
(decals)

1st as a child – 2nd a royal bride – 3rd a doting mother - 4th a morale boost during the blitz – 5th a lover of animals – 6th a day at the races – 7th a royal grandmother - 8th a centenary birthday



Woodsetton Peeps
lacquered brass
Elizabeth Angela
Marguerite Bowes Lyon
1900-2002



Woodsetton Peeps
pewter



china



china



fine bone china
with her coat-of-arms incorporated in design

In Memoriam 10 years 2002-2012



china

Others



Birchcroft
china
from Royal Ladies set



Caverswall
china



Caverswall
china
birth of Prince William
Queen Elizabeth the Queen Mother
becomes a great-grandmother



Connoisseur Collectables
china & resin



Connoisseur Collectables
china & resin



Dunheved
handpainted bone china
Sheila Whitcombe



Dunheved
handpainted bone china
Sheila Whitcombe



St George
fine bone china
63rd birthday



St George
fine bone china



Sterling Classic
china & resin



Sutherland
china
commemorating 50 years since coronation 1987



Sutherland
handpainted china



china



china



china
1987

the list of CONTRIBUTORS may be found with King Charles

© Sue Gowan
October 2006