

Peter Swingler's handpainted enamelled thimbles

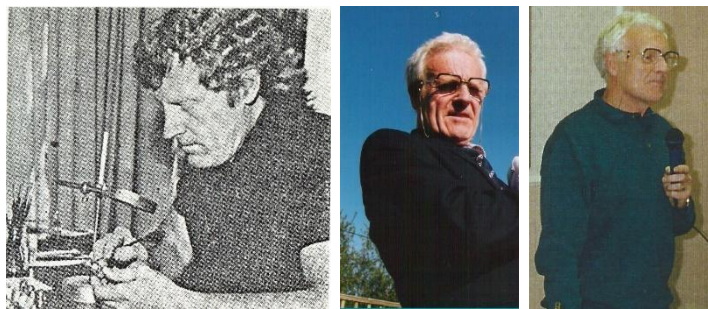
1968-2014

Birmingham England

I have undertaken two previous British enamelled thimbles topics – Crummles and Graham Payne handpainted thimbles, which includes his enamelled range. I have always shied away from featuring Peter Swingler's thimbles: I had never even handled one of his treasured creations - never mind owning one. Working with over 1100 photos that are now included here is such a treat.

Lydia Hamilton has inspired me to bring this topic to life, with her love and interest in Peter's creations.

Swingler's thimbles are different from those of Crummles and Payne. Their thimbles are of enamelling on brass and there were several handpainters employed in the creation of their range. Swingler was a vitreous enameller and a freehand painter. He alone painted the enamelled miniature portraits on sterling silver blank thimbles. Peter's miniature painting is so fine that it was accomplished only with the use of a magnifying glass.



L: working with a magnifier – C: Peter supplied by the Swinglers - R: Peter Swingler 1999

Swingler was born in England in 1937. According to Zalkin, Swingler began handpainting thimbles in 1973: other sources name 1972 or 1975. The 1969 thimbles of the Investiture of Prince Charles should be his earliest, but it is unclear when these thimbles were painted.

Peter died in August 2015 and in that period of over forty years, his output was prodigious, even though his thimble editions were small.

Zalkin described Swingler's thimble enamelled painting: 'In his method, each colour used to decorate the thimble must be fired in a kiln separately, requiring firing as many times as there are different colours used.'

This could be done for seven or eight times. Flux, a colourless glass, was then applied to protect the enamel, which was again fired. What a painstaking procedure. For the most elaborate of his creations, it would have taken him up to eight hours to complete one thimble.

According to Norma Spicer, Swingler worked with Birmingham's James Swann & Son (JS&S) from 1969, painting his enamelled thimbles on their plain sterling silver thimbles. The JS&S registered mark, with the hallmark, will be found in either of two places – on the outer rim (when the enamelling doesn't reach the rim) or up in the apex when it does. These thimbles tend to have the scenes painted all round.

It was during this period that Swingler seems to have signed his thimbles with 'PS' – look for his signature almost hidden in the design of his enamelled thimbles.



signed 'PS' – mainly used on the JS&S sterling silver thimbles

After a few years Swingler used sterling silver thimbles with his own Birmingham registered sterling silver mark. Tho the thimbles bear the mark of PS, the blank thimbles were still made for him for enamelling, by JS&S. According to an article in *Thimble Talk* about Swingler in January 1984, this was in 1975.

When the enamelling covers most of the outer thimble, look for his mark inside on the rim or up in the apex. They are die struck in the flat and then pulled round to form the thimble and the join is then soldered. The top or apex is then soldered on.

Swingler used whatever assayed thimbles were to hand.



Peter Swingler's Birmingham registered sterling silver mark – P and S in separate diamond shapes
C: hallmark on inner rim – R: marks up in apex with additional lettering 'Made in England'

PS hallmarked thimbles are taller, and the enamelling is done on two roundels on an enamelled ground. Often the roundel is of white enamelling with identifying lettering. These are separated by applied beautiful silverwork.

He switched to using the full form of his name.

According to Shaneyfelt, the date was occasionally included next to the signature.

As a miniaturist, Swingler perfected painting portraits of people rather than scenes and buildings.



Peter Swingler's full signature – R: short signature
the majority of thimbles have the long signature – so not recorded here

Once Peter retired, he accessed blank sterling thimbles from both Andy Poole (AJP) and Gladman & Norman (G&N) - both of Birmingham. He retired from painting thimbles in around 2002, when he moved from Birmingham to live in Ottery St Mary, in Devon. He was persuaded by collectors to come out of retirement in 2005 and was still painting thimbles in 2014.



AJP - G&N

Peter produced the Kings and Queens of England sets and sets of Presidents of America, almost simultaneously. When thimble collection of the late Mary Cruwys, went up for auction by Bleasdales Limited in 2016, it included a thimble set of the Presidents of America, as well as a letter from Swingler to Mary.

A set of Mary's Kings and Queens of England set sold at the July 2017 Bleasdales Limited auction.

Swingler undertook personal commissions, which were one-off creations.

In spring 1978, thimbles could be commissioned to order thru Roz Belford's *The Sewing Circle*.

In winter 1983, Belford again offered this service to collectors with the following options:

1. They supply a clear facial close-up photo, with colour of hair, eyes, clothing, allowing 8-10 weeks for delivery
2. a choice of the colour of the background enamelling
3. the preferred design on the name roundel (flowers, leaves etc)

Until recently when I had encountered a number up in the apex of a Swingler thimble with his mark, I had presumed they were thimble size numbers. I think they indicate the **edition number** of the thimble in any one series.

The thimbles hallmarked with JS&S marks have the thimble **size** number on the band.

You will also notice how varied are the apexes of the sterling silver thimbles used. The most decorative are the set of the Kings and Queens of England, which have an enamelled, domed apex.

For special commemoratives, like the wedding of Prince Charles and Lady Diana Spencer, there is a special raised decoration on the apex.

 <p>JS&S-made - generally a flatter indented apex</p>	 <p>PS-design and JS&S made - domed apex which is accompanied by elaborate side panels</p>	  <p>PS-design - longer indentations</p>
 <p>AJP-made - more pointy apex</p>	 <p>AJP-made - flatter apex</p>	 <p>flatter apex with wider-spaced indentations</p>
 <p>rare use of panels on apex</p>	   <p>PS-design - enamelled and sterling apex for Kings and Queens set etc</p>	
  <p>PS-design - raised silver apex for 1981 wedding</p>		 <p>enamelled 2011 apex</p>

The sterling silver side panels on Swingler thimbles are striking and elaborate.



these two side panels have identical patterning

L: 1976 - R: 2005

the patterning is less crisp as the thimble dies aged.

In all the literature and sales catalogues, I have only encountered a few references to the dimensions or weight of the Swingler designed sterling silver thimbles i.e. height: $1\frac{1}{8}$ ins (28.5mm). This is for one of the taller domed thimbles. In a recent ebay listing, the weight is given as 14.3-15 grams.

In 2021 I stumbled across the first advertisements for Swingler thimbles in *The Thimble Guild* catalogues, as late as 1995. They were offered as a (valuable) first prize in their monthly draws on three occasions. I will record this with the thimbles I encountered there.

Was your Swingler thimble sold in a cardboard thimble box? This is what one looked like – with the lettering on the inner lid of the box 'Enamelled Hand Painted Sterling Silver Thimble'. The name Swingler does not appear here.



If you are a member of Thimble Collectors International (TCI), please read Linda Shaneyfelt's excellent article on her collection of Swingler thimbles in the fall 2009 *TCI Bulletin*, which is illustrated in full colour. Linda went on to share her love of Swingler thimbles with her presentation to the 2010 TCI Convention in downtown Cincinnati. Thru research for both the article and her talk, Linda had contact with Maureen and Peter Swingler who were generous with their time.

To quote Shaneyfelt, in contact with Peter Swingler - 'According to his estimates, he has painted around 2500 and 3000 thimbles over the last forty years.'

As thimble collectors, we tend to think of Swingler only in terms of thimbles. His profession was as an enameller and handpainter of Masonic regalia and jewellery, which would have included fine miniature work, including portraits and he continued with this while then taking thimble commissions.

Swingler was a guest speaker at the Dorset Thimble Society in 1999 and showed examples of his thimbles. He also displayed other examples of his enamelled work viz. Masonic badges – teaspoons serviette rings – boxes. Shaneyfelt adds dressing table sets and compacts to the list.

I have removed enamelled thimbles initially thought to be painted by Swingler. These include Anne Hathaway's cottage - Buckingham Palace – Edinburgh Castle - Houses of Parliament Worcester Cathedral.

They have the painter's initials of CH for Chris Harmer, who also painted enamelled thimbles for JS&S. They have previously been ascribed to PS, who as it becomes more evident, only painted buildings on private commission.

I have found at least two other examples of handpainted enamelled thimbles ascribed to Swingler that have the painter's initials of 'CH' or 'C Harmer' clearly embodied in the enamelled design e.g., 'Adventures of Tom Sawyer 1876-1976' and 'To the Bride 1977'. **Buyer beware.**



I have arranged the thimbles by their name or topic, rather than by the date they were created, using the lettering/name on his thimbles. Each thimble was handpainted, so I will include all examples that I have found – until it becomes impractical!! Images of the thimbles in the round will really show us the true artistry of this magnificently talented man.
 I have grouped all 'Birds' together, and all 'Pets' and all 'Personalised', rather than separating them by individual names as the rest.

for other enamelled thimbles topics see

British modern enamelled thimbles
 Cornish Enamels thimbles
 Crummles enamel thimbles
 Graham Payne handpainted thimbles

Alexandra

see also: Kings and Queens of England
 privately commissioned



1981

applied silverwork patterning on side panels

THE AMISH QUILTERS 2009

privately commissioned (Daria Phair)



with Swingler's drawing

ANDREW SARAH THE DUKE & DUCHESS OF YORK WEDDING 1986

privately commissioned (Celia Barrington)



PS – Birmingham – 1986

navy enamelled band with lettering

lettering on white and blue enamelled banner on verso

a double portrait in one roundel – separated by a small silver finial decoration

PRINCESS ANNE AND MARK PHILIPS WEDDING 1973

According to Norma Spicer, Swingler was painting thimbles for JS&S for this design – look for his signature. The portraits seem different in each version?



1.

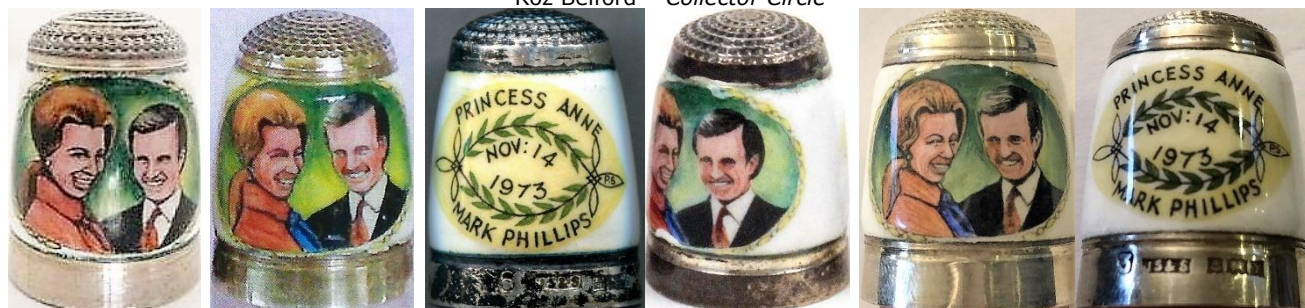
JS&S – Birmingham – 1972

commemorating 'Princess Anne Mark Phillips Nov 1973' (ie no actual date lettering)



1972 b&w advertisement – also with missing '14' date lettering

Roz Belford – Collector Circle



2.



JS&S – Birmingham – 1968 1973
commemorating 'Princess Anne Mark Phillips Nov:14 1973'

- 1-2.** double portrait on white enamelled ground
signed 'PS' in right leaf of the wreath
L: Princess Anne's scarf isn't blue

Princess Beatrice 1988

with her mother Sarah the Duchess of York



'To commemorate the Birth of Princess Beatrice 8-8-1988'
commissioned for sale by the Thimble Society of London
applied silverwork patterning on side panels

Ludwig van Beethoven 1770-1827

privately commissioned



JS&S – Birmingham
cobalt blue enamelled sides
this may not have been signed

Betsy Ross



scene all round showing Betsy Ross sewing stars onto the US flag
enamelling right to the rim

birds



1.

Bullfinch
on both sides
JS&S – Birmingham – 1972
signed 'PS'



JS&S – Birmingham - 1975
enamelling right to the rim
bird appears on **both** sides
signed 'PS' in white within the blue



2.



PS – Birmingham – 1981



PS – Birmingham – 1981

- 1-2.** bird appears on **both** sides with slightly different images on the enamelled roundels
 applied silverwork patterning on side panels
 commissioned for the Royal Society for the Protection of Birds
 limited to **100**
 Thimbles Only winter 1984



3.
AJP – Birmingham



'Blue Tit'
AJP – Birmingham – 2004
 with sprigs of blue flowers & pink roses



AJP – Birmingham
 with different sprigs of blue flowers & pink rose



AJP – Birmingham
with sprigs of blue flowers



1.

Ducks
JS&S – Birmingham
C: signed 'PS'

offered as a special prize by The Thimble Guild in February 1995 (R)
R: flatter apex with wider-spaced indentations
L & second R: enamelling right to the rim



2.

JS&S – Birmingham
R: signed 'PS'



3.

JS&S – Birmingham
signed 'PS'

R: offered as a special prize The Thimble Guild February 1995



4.

PS – Birmingham – 1979



5.

JS&S – Birmingham



6.

AJP – Birmingham
blue enamelled rim



1.



Kingfisher

PS – Birmingham – 1981

cobalt blue enamelled sides

painting the same on both sides, with minor differences
apex indentations are longer



2-3.

AJP – Birmingham



4.

JS&S – Birmingham
signed 'PS'

5.



Malachite kingfisher
JS&S – Birmingham
signed 'PS'



owl
enamelling right to the rim



pheasants
AJP- Birmingham
see a similar design for Christmas 1977



pheasants
PS – Birmingham – 1979
these thimbles are much shorter than usual



swallow
JS&S – Birmingham – 1972



JS&S – Birmingham – 1972



JS&S – Birmingham – 1972

Robert Burns - Robbie Burns 1759-1796



1.

PS – Birmingham – 1976
'Robert Burns 1759-1796'

with a frieze of thistles painted around the lower rim



2.

green applied silverwork patterning on side panels

JOHNNY CARSON 1977

These first appeared for sale in the US thimble catalogues by Roz Belford – the *Collector Circle* commissioned for her members.



'The Thimble Full of Admiration 15 years of T.V. Magic Oct. 1st 1977'
lettering on white roundel

blue enamelled applied silverwork patterning on side panels

MRS ROSALYNNE CARTER 1977

see also Jimmy Carter – Presidents ...



'First Lady's Joy 1977 Mrs Rosalynn Carter'

JS&S – Birmingham – 1975

showing Mrs. Rosalynn Carter – with her daughter Amy – at her sewing machine
lettering on white roundel with a spool of thread and needle
enamelling right to the rim

Prince Charles' Investiture 1969

These thimbles' assay date post-dates the Investiture. Why would PS paint these thimbles for a date that had passed?

Are these the earliest thimbles that were painted by PS?

According to Norma Spicer, Swingler began painting thimbles for JS&S with this thimble.
limited to **10** (information from PS)



1.

'1969'

JS&S – Birmingham – 1972

R: unsigned



1b.

JS&S – Birmingham – 1968



details of unsigned 1968 thimble



2.

'1969'

these enamelled bands were used by JS&S so would have been available for Swingler to paint



3.



'Carnarvon 1969'

JS&S – Birmingham – 1973

'Charles Prince of Wales'



JS&S – Birmingham – 1972

'Charles Prince of Wales'

the Carnarvon lettering is missing, as well as the yellow shading behind the head
short signature

PRINCE CHARLES & PRINCESS DIANA 1981

1-4 in a double portrait – separated by a small silver finial decoration



1.

elaborate apex with applied scrolled crown
with 'Ich Dien' and PoW feathers with '1981' on sterling apex
navy enamelled band commemorating 'HRH Prince & Princess of Wales – the Wedding'
Charles – red uniform
pre-wedding portraits?



2.

PS – Birmingham - 1981

elaborate apex with applied PoW feathers with 'Ich Dien' and with '1981'
navy enamelled band commemorating 'HRH Prince & Princess of Wales – the Wedding'
verso for this double portrait thimble with St Pauls Cathedral in relief



3.

PS – Birmingham - 1981

elaborate apex with applied PoW feathers with 'Ich Dien' and with '1981'
navy enamelled band commemorating 'HRH Prince & Princess of Wales – the Wedding'
verso for this double portrait thimble with St Pauls Cathedral in relief
the Prince is not smiling



4.

navy enamelled band commemorating 'HRH Prince & Princess of Wales – the Wedding'
no date on apex



5.

according to Norma Spicer, Swingler was painting thimbles for JS&S for this design – look for his PS signature
no lettering around rim

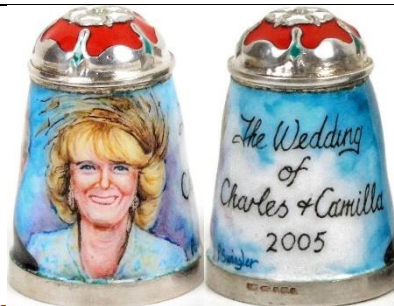
H.R.H THE PRINCE of WALES



PS – Birmingham – 1982

applied silverwork patterning on side panels
lettering on white roundel with Prince of Wales feathers
spelling error – Ich **Deim** instead of Ich Dien?

Charles and Camilla 2005



1.

AJP – Birmingham – 2005

commemorating 'The wedding of Charles & Camilla 2005'
elaborate red enamelling and sterling apex
this apex is the same one used on the Kings and Queens of England set



2.

commemorating 'HRH Prince Charles & Camilla Parker Bowles'
a double portrait in one roundel
Prince of Wales feathers 'Ich Dien' on verso

Cheetah

privately commissioned (Irene Schwall)



AJP – Birmingham – 2003
'Serengeti 2003'
signed 'PS'
painted from a private photograph

Frederic Chopin

no photo

Christmas

annual thimbles

These first appeared for sale in the US thimble catalogues by Roz Belford – *The Sewing Corner* – from 1975 - commissioned for her members.



JS&S – Birmingham – 1972
nativity



1975
the Adoration of the Magi
robin on verso
signed 'PS'
enamelling right to the rim

limited to **15**



b&w image which has the robin on a branch



JS&S – Birmingham – 1976

enamelling right to the rim

R: offered as a special prize *The Thimble Guild* November 1996

limited to **15**





1977

JS&S – Birmingham – 1977/1978

pheasants in a snowy scene

enamelling right to the rim

bottom: a dot on either side of the date

limited to **15**

see similar design in Birds section where birds face in the opposite direction



1.

1978

PS – Birmingham – 1978

yellow 'candle glow' around the tree

limited to **15**



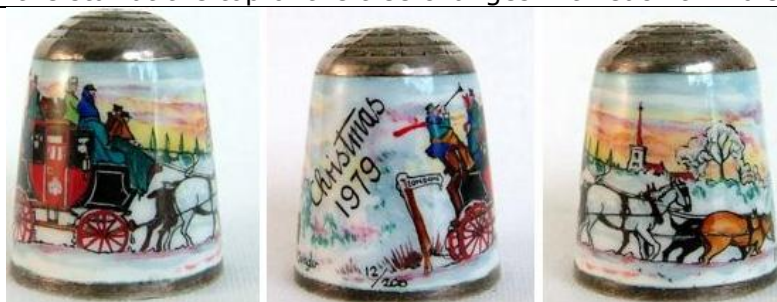
2.



1978

PS – Birmingham – 1978

slightly different with no candle glow nor holly on verso
the star at the top of the tree changes with each thimble



1979

limited to 15



1980
enamelling right to the rim
limited to 15



1981
limited to 15



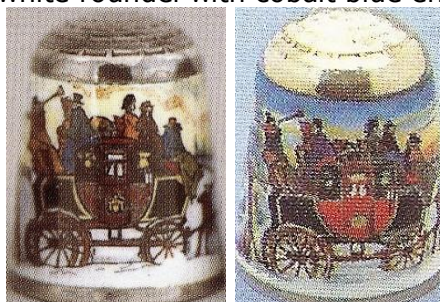
1.

1984
PS - Birmingham - 1984
'First Edition Santa' - sprig of holly on verso
lettering on white roundel with cobalt blue enamelled sides



2.

1984
PS - Birmingham - 1984
'1st Edition Santa' - no sprig of holly on verso
lettering on white roundel with cobalt blue enamelled sides



3.



PS – Birmingham – 1984

these were offered for sale by the USA's Jean Shoup in *Thimbles Only*, winter 1984
'Christmas in London 1984'



1987

PS – Birmingham – 1987

'Prettige Feestdagen 1987'

Dutch lettering in cursive

commissioned by Kay Sullivan *De Vingerhoed*

'KS' (mark for Kay Sullivan's *De Vingerhoed*) and ZI [the import marks into The Netherlands] stamped on the apex

limited to **35** - fewer than this were made
(information from PS)



PS – Birmingham – 2004

no Christmas lettering

additional band of holly and ivy lettered around the rim
signpost: 'To London'

The Christmas thimbles from 2009–2014 were privately commissioned (Lydia Hamilton).



2009

AJP – Birmingham – 2009



2010

AJP – Birmingham – 2010

(hallmark is very finely stamped on outer rim)

the two children are Peter's grandchildren

the dog in the foreground is Peter's favourite dog 'Scottie' – there is a small robin painted on the right edge of the wall



2011

AJP – Birmingham – 2011

(hallmark is very finely stamped on outer rim)

apex is handpainted enamel

the figures in foreground are Swinger and one of his grandchildren – and his dog walking in the snow at Ottery St Mary with the local church



2012

AJP – Birmingham – 2012

(hallmark is very finely stamped on outer rim)



2013

AJP – Birmingham – 2013

(hallmark is very finely stamped on outer rim)
the Madonna's face is painted in exquisite detail – photos don't do her justice



2014

AJP – Birmingham – 2014

(hallmark is very finely stamped on outer rim)
was this Swingler's last thimble?

WINSTON CHURCHILL

according to Norma Spicer, Swingler was painting thimbles for JS&S for this design – look for his signature in the leaves



1.

1874-1965

JS&S – Birmingham – 1972/1974

signed 'P.S.' in leaf at right of wreath
cobalt blue enamelled sides



2.

1874-1965

PS – Birmingham – 1981

different apex, enamelling going down to fine band
signed 'PS' in leaf at right of wreath - extra signature within portrait

3.



1874-1965

PS – Birmingham

cursive lettering on verso

4.



1874-1974

JS&S – Birmingham – 1975/1977

signed 'PS' in leaf at right of wreath

cobalt blue enamelled sides

enamelling to the rim

these were offered for sale by the US *The Sewing Corner*

lower: light colouring around the roundel

5.



1874-1974

PS – Birmingham – 1976

signed 'PS' in leaf

applied silverwork patterning on side panels

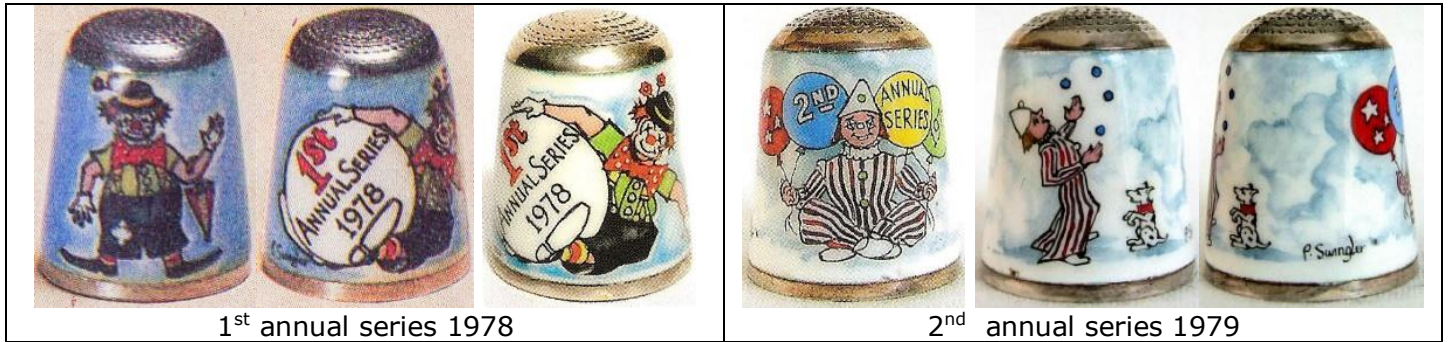
light colouring around the roundel

limited to 6 (information from PS)

4-5. issued for Churchill's centenary

clowns

These first appeared for sale in the US thimble catalogues by Roz Belford – *The Collector's Choice*, spring 1979 – commissioned for her members.



Corn Palace

privately commissioned (Linda Shaneyfelt)



2009

commissioned by Linda Shaneyfelt for the Corn Palace in her hometown of Mitchell, South Dakota

Diana Princess of Wales 1961-1997



G&N – Birmingham – 1997
white roundel with a rose
applied silverwork patterning on side

The Dog & Bird



2004
'The Dog & Bird'
PS - Birmingham - 2004

Down Memory Lane



AJP - Birmingham - 1997



AJP - Birmingham - 2008



AJP – Birmingham



AJP – Birmingham

Dutch Queens

commissioned by Anne Jansen of The Netherlands
applied silverwork with different colour enamelled patterning on side panels



'Emma Koningen der Nederlanden 1890-98'
black enamel



'Wilhelmina Koningen der Nederlanden 1898-1948'
yellow enamel



'Juliana Koningen der Nederlanden 1948-1980'
yellow enamel



'Beatrix Koningen der Nederlanden 30th April 1980'
yellow enamel



Queen Beatrix
taking the oath
20 April 1980



b&w photo

Dutch scene

privately commissioned



R: 1979

enamelling right to the rim and wraps all round the thimble

Easter 2011

privately commissioned



AJP – Birmingham – 2005

Eiffel Tower Paris

privately commissioned



JS&S – Birmingham

enamelling right to the rim

Elephants

privately commissioned (Irene Schwall)



AJP – Birmingham – 2003
 'Ngorongoro 2003'
 signed 'PS'
 painted from a private photograph

Queen Elizabeth II

see also: Kings and Queens of England



1.

'1977 EII R'
JS&S – Birmingham – 1977
 commemorating 'The Queen's Silver Jubilee 1977'
 cobalt blue enamelled sides
 enamelling right to the rim
 these first appeared for sale by Roz Belford *The Sewing Corner*
 signed 'PS' in white
 limited to **15**

according to Norma Spicer, Swingler was painting thimbles for JS&S for this design – look for his signature above the left shoulder



2.

black enamelled applied silverwork patterning on side panels
 enamelled coat-of-arms on verso



2a.

PS – Birmingham – 1970s

privately commissioned by a Canadian collector (information from PS)



2b.

PS – Birmingham – 1977

lower boxed: available from 'Sewing Corner Whitestone New York'

'23' stamped up in apex
height: 1 1/8 ins (28.5mm)



3.



PS – Birmingham – 1977

commemorating 'Queen Elizabeth II Royal Silver Jubilee 1977'

the lettering is around the rim of royal blue enamelling

a double portrait of Queen Elizabeth II and Prince Philip in profile in one roundel

elaborate silver royal coat-of-arms applied on verso, which includes daffodils roses etc, with no enamelling

limited to **250**

boxed: shows the hallmarks on the outer rim and a thistle - shamrocks - English rose - daffodil supporting the enamelled portrait



3a.

PS – Birmingham – 1977

commemorating 'Queen Elizabeth II Royal Silver Jubilee 1977'

(marked on outer rim)
 the lettering is around the rim of royal blue enamelling
 a double portrait, facing forward, in one roundel
 elaborate silver royal coat-of-arms applied on verso, with no enamelling

4.



JS&S – Birmingham – 1978

commemorating 'Coronation of Queen Elizabeth 1953-1978'
 pale blue enamelled sides
 stone' in apex

4b.



JS&S – Birmingham – 1978

commemorating 'Coronation of Queen Elizabeth 1953-1978'
 pale blue enamelled sides

5.



commemorating 'The Queen's Golden Jubilee 2002'
 applied silverwork sides' patterning

H.R.H. QUEEN ELIZABETH THE QUEEN MOTHER

1.



JS&S – Birmingham – 1975

'H.R.H Queen Elizabeth the Queen Mother'

L: signature within wreath
lettering on a yellow scroll
enamelling right to the rim



2.

commemorating 'H.R.H the Queen Mother 75th Birthday 1975'

lettering on a yellow scroll
enamelling right to the rim

3.



PS – Birmingham – 1980

commemorating '80th Birthday Queen Elizabeth the Queen Mother 1980'

lettering on white roundel
applied silverwork patterning on side panels

limited to **25**

4.



PS – Birmingham – 1984

where the crown and her jewellery are different
 'To commemorate the Queen Mothers 90th birthday 4-8-90'
 applied silverwork patterning on side panels
 commissioned by Thimble Society of London
 L: with lilies and leaves

Elgar

Worcester Cathedral on verso



1.

JS&S – Birmingham
 cobalt blue enamelled sides



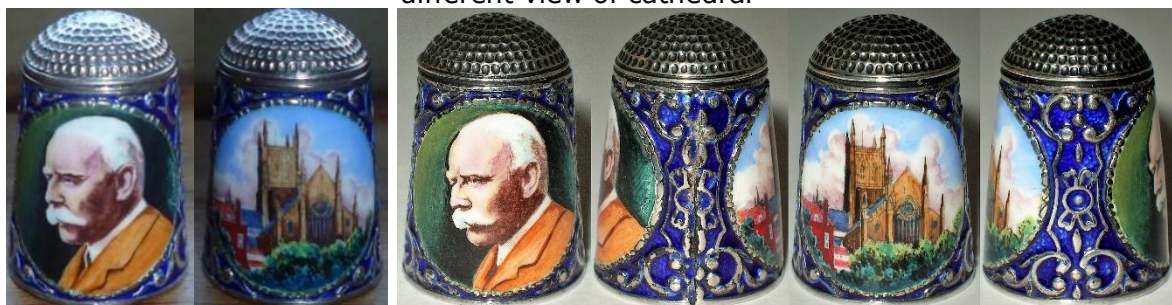
2.

PS – Birmingham – 1981
 applied silverwork patterning on side panels
 different view of the Cathedral



3.

applied silverwork patterning on side
 Elgar's blue jacket
 different view of cathedral



4.

PS – Birmingham – 1981
 applied silverwork patterning on side panels
 with blue enamelling
 Elgar's mustard-coloured jacket

thimble was commissioned to commemorate the unveiling of the statue of Elgar by H.R.H Prince Charles
 on 2 June 1981

limited to 8 for an antique dealer in Worcester

Princess Eugenie 1990

with her mother Sarah the Duchess of York



1.

'To commemorate the Birth of Princess Eugenie of York 23-3-90'
commissioned for sale by the Thimble Society of London
applied silverwork patterning on side panels



2.

'To commemorate the Birth of Princess Eugenie 23-3-90'

Falklands 1982

According to Norma Spicer, Swingler was painting thimbles for JS&S for this design – look for his signature.



'To Commemorate the British Victory of the Falklands 15th June 1982'
enamelling right to the rim

Girl in a Straw Hat

privately commissioned

see also The Straw Hat



G&N – Birmingham – 2007

applied silverwork patterning on side panels
white roundel – with red rose

THE GOOD SHEPHERD

privately commissioned



lettered in upper case

The Hunt

These first appeared for sale in the US thimble catalogues by Roz Belford – *The Sewing Corner* – commissioned for her members.

According to Norma Spicer, Swingler was painting thimbles for JS&S for this design – look for his signature.

Swingler lettered three of these designs with named titles.



enamelling right to the rim
limited to **8**



"The Fox Hunt"
PS – Birmingham – 1977



3.

JS&S- Birmingham - 1989
enamelling right to the rim
a more naïve study than other two designs



4.

AJP – Birmingham
with hounds



5.

AJP – Birmingham
with hounds



6.

"Hunting scene"
AJP – Birmingham
rider facing right
signed 'P.Swingler'



7.

"The Last Hunt"
AJP – Birmingham

with white horse

8.



"Huntsmen & hounds"
AJP – Birmingham – 2005

THE JAZZ SINGER 1977

These first appeared for sale by Roz Belford *The Collector's Choice* spring 1979

1.



PS – Birmingham -1977

'The Jazz Singer October 1927 Half a Century Golden Sound'
'1927-1977'
limited to **200**

2.



'The Jazz Singer October 1927 Half a Centery (sic) Golden Sound'
'1927-1977'

the miss-spelling was corrected on later examples

3.



PS – Birmingham -1979
shows a small rim of yellow trim at apex rim

Josephine 1763-1814

privately commissioned

see also Napoleon



applied silverwork patterning on side panels
white roundel – with red rose and blue flowers

Kings and Queens of England

Each thimble is a work of art with the stunning red enamelled domed apex. The apex is crowned with a silver edged English rose, which is of white enamel within a red enamelled English rose design. Some of the enamelled rose apexes have green enamelling inserts (centre photo below). The silver rose inner apex is also shown.



The lettering - 'Kings and Queens of England' – is around the thimble rim of royal blue enamel. There is elaborate applied silverwork of a lion rampant and a unicorn on each side of the roundels.



signed 'P.Swingler' at edge of each portrait.

The images used to paint each monarch were taken from 1930s cigarette cards, given away in packets by John Player & Sons (information from Peter Swingler to Lydia). This was a necessity as the portraits of royalty belong to the Crown.

The set of 40 which began in 1982, and continued until 1997, has the monarch's name and reign dates lettered (mainly in cursive) on a white roundel on the verso, with silver scrolls under the roundel. The set now numbers 41 in July 2018 with the addition of an earlier King Ethelred.

Thimble Society of London had single thimbles for sale at **£52 each** from 1983.

These individual popular monarchs could also be commissioned from Swingler but judging by the examples, they were a plain version with only the portrait and bio details. There was no red enamelled apex nor was there the blue enamelled rim with the lettering 'Kings and Queens of England'.

The set was boxed and lined with blue velvet.



set of 40

According to the TSL in summer 1983, the thimbles would be issued from 1983, when there was only one full set available. They named the set 'Reigning Monarchs of Britain'.

The thimbles of this set weigh 14 grams.

Limited to **5** sets

The reigning monarchs set of 40



King Ethelred
978-1016

PS – Birmingham – 1985

this earlier king has not been included in this Kings & Queens of England set before commissioned by The Thimble Guild, Scotland



King William I
1066-87

R: PS – Birmingham – 1989



King William II
1087-1100

PS – Birmingham – 1989



King Henry I
1100-35

L: PS – Birmingham – 1986

R: PS – Birmingham – 1989



King Stephen
1135-54

L: PS – Birmingham – 1986

R: PS – Birmingham – 1989



King Henry II
1154-89

L: PS – Birmingham – 1984

R: PS – Birmingham – 1989



4

King Richard I
1189-99

L: PS – Birmingham – 1986

R: PS – Birmingham – 1989



King John
1199-1261

L: PS - Birmingham
C: PS - Birmingham - 1989
R: PS - Birmingham - 1985



King Henry III
1216-72

L: PS - Birmingham - 1985
2nd L: PS - Birmingham - 1984
R: PS - Birmingham - 1986



King Edward I
1272-1307

L: PS - Birmingham - 1986
R: PS - Birmingham - 1989



King Edward II
1307-27

L: PS - Birmingham - 1984
R: PS - Birmingham - 1989



King Edward III
1327-77

PS - Birmingham - 1989



King Richard II
1377-99

L: PS - Birmingham - 1986
R: PS - Birmingham - 1989



King Henry IV
1399-1413

L: PS - Birmingham - 1984
C: PS - Birmingham - 1985
R: PS - Birmingham - 1989



King Henry V
1413-22

L: PS - Birmingham - 1984
C: PS - Birmingham - 1986
R: PS - Birmingham - 1989



King Henry VI
1422-61

L: PS - Birmingham - 1984
C: PS - Birmingham - 1986
R: PS - Birmingham - 1989



King Edward IV
1461-83

L: PS - Birmingham - 1985 (L)
R: PS - Birmingham - 1989 (P)



King Edward V
1483

L: PS - Birmingham - 1986
R: PS - Birmingham - 1989



King Richard III
1483-85

L: PS - Birmingham - 1985
C: PS - Birmingham - 1986
R: PS - Birmingham - 1989



King Henry VII
1485-1509

L: PS - Birmingham - 1985
C: PS - Birmingham - 1986
R: PS - Birmingham - 1989
see Elizabeth of York



King Henry VIII
1509-47

L: PS - Birmingham - 1983
C: PS - Birmingham - 1986
R: PS - Birmingham - 1989
see his six wives



King Edward VI
1547-53

L: PS – Birmingham – 1985
R: PS – Birmingham – 1989



Queen Mary I
1553-58

L: PS – Birmingham – 1986
2nd R: PS – Birmingham – 1989
R: G&N – Birmingham – 1997



Queen Elizabeth I
1558-1603

2nd R: PS – Birmingham – 1985
R: PS – Birmingham – 1989



King James I
1603-25

PS – Birmingham – 1989



King Charles I

1625-49

L: PS – Birmingham – 1985

C: PS – Birmingham – 1989

R: G&N – Birmingham – 1997

monarch facing in different directions

see Queen Henrietta Maria



King Charles II

1660-85

L-R 1: PS – Birmingham – 1985

2: PS – Birmingham – 1986

3: PS – Birmingham – 1989

4: G&N – Birmingham – 2002

see Catherine of Braganza



King James II

1685-88

L: PS – Birmingham – 1984

C: PS – Birmingham – 1986

R: PS – Birmingham – 1989

C: blue background – L&R: black background



King William III

1688-1702

L: PS – Birmingham – 1984

R: PS – Birmingham – 1989

see Queen Mary II

who was joint monarch with William

see also: Willem III (Dutch)



Queen Anne

1702-14

L&C: PS – Birmingham – 1985

R: PS – Birmingham – 1989



King George I

1714-27

R: PS – Birmingham – 1989

L: G&N – Birmingham – 1997



King George II

1727-60

C: PS – Birmingham – 1989

R: G&N – Birmingham – 1997

see Caroline of Ansbach



King George III
1760-1820

L: PS – Birmingham – 1982

R: PS – Birmingham – 1989

C: G&N – Birmingham – 1997

see Queen Charlotte of Mecklenburg



King George IV
1820-30

L: PS – Birmingham – 1986

R: PS – Birmingham – 1989

see Queen Caroline of Brunswick



King William IV
1830-37

L: PS – Birmingham – 1986

R: PS – Birmingham – 1989

see Queen Adelaide



Queen Victoria
1837-1901

1: PS – Birmingham – 1984

2: PS – Birmingham – 1986

3: PS – Birmingham – 1989

4: G&N – Birmingham – 1997



King Edward VII
1901-10

L: PS – Birmingham – 1989

R: G&N – Birmingham – 1997

see Queen Alexandra of Denmark



King George V
1910-36

L: PS – Birmingham – 1989

R: G&N – Birmingham – 1997
see Queen Mary



King Edward VIII

Jan.20-Dec.11 1936/1936

C: PS – Birmingham – 1986

R: PS – Birmingham – 1989

monarch's name is printed (L) – in cursive (R)



King George VI
1936-52

C: PS – Birmingham – 1989

R: G&N – Birmingham – 1997

monarch's name is printed (L) – in cursive (R)

L: b&w image



Queen Elizabeth II
1952

L: PS – Birmingham – 1989

different portraits (crowns) with image on R a Coronation painting

I understand that there are now 56 thimbles in one of the sets of the Kings and Queens of England, which includes sixteen of the 'wives' (some of the spousal thimbles don't have their dates). This bigger set of 56 was offered at auction. Some of these extra thimbles have the hallmark date of 1997 and the mark is for G&N of Birmingham.

Is there more than one of these expanded sets?



boxed set of 56 with includes the 16 queens

Queens of reigning monarchs

 <p>Queen Adelaide G&N – Birmingham – 1997 wife of William IV</p>	 <p>Queen Alexandra of Denmark G&N – Birmingham – 1997 wife of Edward VII</p>	 <p>Anne Boleyn G&N – Birmingham – 1997 2nd of Henry VIII's wives</p>
 <p>Anne of Cleves 1515-57 PS – Birmingham – 1986 4th of Henry VIII's wives</p>	 <p>Caroline of Ansbach G&N – Birmingham – 1997 wife of George II</p>	 <p>Queen Caroline of Brunswick PS – Birmingham – 1986 wife of George IV</p>
 <p>Catherine Howard G&N – Birmingham 1997 5th of Henry VIII's wives</p>	 <p>Catherine of Aragon G&N – Birmingham 1997 1st of Henry VIII's wives</p>	 <p>Catherine of Braganza G&N – Birmingham 1997 wife of Charles II</p>



Queen Charlotte of Mecklenburg
G&N – Birmingham – 1997
wife of George III



Elizabeth of York
wife of Henry VII



Queen Henrietta Maria
wife of Charles I



Jane Seymour
1504-37
G&N – Birmingham – 2002
3rd of Henry VIII's wives



Katherine Parr
1512-48
PS – Birmingham – 1986
6th of Henry VIII's wives



Queen Mary II
1688-94
2nd R: PS – Birmingham – 1986
R: PS – Birmingham – 1989
joint monarch with William III
see also: Willem III (Dutch)



Queen Mary
1910-36/R no dates
R: G&N – Birmingham – 1997
wife of George V

Kudu

privately commissioned (Irene Schwall)



AJP – Birmingham – 1996
'Zimbabwe 1996'
signed 'PS'
based on a watercolour painting

The Lighthouse Keepers Daughter

privately commissioned



G&N – Birmingham - '925'
(not assayed)
applied silverwork patterning on side panels
R: posy

Little Girl in Blue

privately commissioned



'Verspronck 1597-1662'
applied silverwork patterning on side panels
painted from a private photograph

Louis XVI King of France 1754-1793

privately commissioned
see also Marie Antoinette



applied silverwork patterning on side panels

SIR MALCOLM SARGENT 1895-1967

privately commissioned



applied silverwork patterning on side panels
with mustard enamelling
lettering in upper case on white in blue roundel with wreath

Marie Antoinette 1755-1793

privately commissioned
see also Louis XVI



applied silverwork patterning on side panels
white roundel with rose

Marie Louise 1791-1847

privately commissioned

see also Napoleon



applied silverwork pattering on side panels
on white roundel with two roses and blue flowers

Mother's Day

annual issues

These first appeared for sale in the US thimble catalogues by Roz Belford – *The Collector's Choice/The Sewing Corner* – commissioned for her members.

According to Norma Spicer, Swingler was painting thimbles for JS&S for some of these designs – look for his signature.



1.



1975

JS&S – Birmingham – 1975

a mother's rose
enamelling right to the rim



2.

'1975' painted in a different position and lettering for Mother's Day different



1976

JS&S – Birmingham – 1975

aka 'Whistler's Mother'

lettering in cursive

enamelling right to the rim

limited to **18**



1977

JS&S – Birmingham – 1977

mother and baby

lettering in cursive

L: mother facing left

enamelling right to the rim



1978

JS&S – Birmingham – 1978

sister and with a baby brother

lettering in cursive

L: red dress – R: blue dress

Lower: this is the prototype offered by The Collector's Circle in 1978. The painting goes all round the thimble: not contained within the roundel

no photo

1979

mother and toddler

EARL/LORD MOUNTBATTEN 1900-1979



1.

1979

PS - Birmingham - 1979

'Earl Mountbatten of Burma 1900-1979'

blue enamelled applied silverwork patterning on side panels
lettering on white roundel



2.

1979

'Lord Mountbatten Admiral of the Fleet 1900-1979'

C: blue enamelled applied silverwork patterning on side panels
lettering on white roundel
showing the insignia of office

Mozart

privately commissioned (Celia Barrington)



PS - Birmingham - 1991

'To Commemorate The Bi-Centennial Mozart 1791-1991'

applied silverwork patterning on side panels

L: patterned collar

My Dear Mother
privately commissioned



applied silverwork patterning on side panels

NAPOLEON BONAPARTE 1769-1821
privately commissioned



PS – Birmingham – 1976
red enameled applied silverwork patterning on side panels

NAPOLEON II 1811-1832
privately commissioned



applied silverwork patterning on side panels
white roundel with two roses

HORATIO NELSON and EMMA HAMILTON



PS - Birmingham - 1975

upper images: (the hallmarks are unusually placed on the apex)

'1758-1805' - portrait facing left
with royal blue enamelling
enamelling right to the rim

portrait cameo bound by a silver plaited rope border on both sides
signed 'PS' on right leaf of the wreaths



PS - Birmingham - 1976

boxed set completes the set of two

'Emma Hamilton 1761-1815' - 'Horatio Nelson 1758-1805' (facing right)

signed 'PS' on right leaf of the wreaths
no enamelled sides



G&N - Birmingham - 2005

'Lord Nelson Bi-Centenary Anniversary 1805-2005' - "Emma" Lady Hamilton 1765-1815' pair

white roundel with rose on Emma's

applied silverwork patterning on side panels

commissioned by Thimble Society of London to commemorate the bicentenary of the Battle of Trafalgar

it was planned - to offer **ten pairs** in gold

unknown how many of these were made

The Old Lace-maker privately commissioned



JS&S – Birmingham
white roundel with two crossed lace bobbins and two roses
royal blue enamelled sides

personalised

Swingler undertook personalised commissions

There may be many more of these one-off thimbles commissions painted by Swingler



‘Albert & Mildred Jarvis Nov.23rd 1994 50th
anniversary’
lettering in cursive on white enamelled roundel
TCI spring 2011



‘Jina Samulka 2009 Thimble Collector’
AJP – Birmingham - 2009
lettering in cursive on white enamelled roundel
with a rose
applied silverwork patterning on side panels



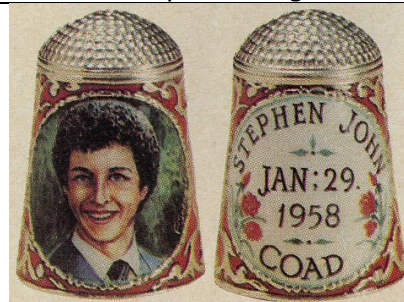
‘Karel Anne Jansen’
25th – 30th (pearl) – 35th (coral) wedding
anniversaries
the 30th had two pearls - the 35th two coral – 25th





‘Kathryn Aileen Shoup Oct. 11th 1982’
commissioned by her mother Jean Shoup
lettering on white roundel with sprigs of flowers
applied silverwork patterning on side panels



‘Linda Shaneyfelt 2006 thimble collector’
lettering in cursive on white enamelled roundel
with a rose
applied silverwork patterning on side panels



‘Stephen John Coad Jan 29 1958’
commissioned by his mother Leona
lettering on white roundel with red roses

	red enamelled applied silverwork patterning on side panels Collectors Corner spring 1978
 	<p><u>PS – Birmingham – 1988</u> 'Martha Arrufat' lettering in cursive commemorating '25 years Bay Area thimble Society 1978-2003' BATS symbol with blue flowers thimble designed by Martha and several other BATS members commissioned commemorative thimbles</p>

pets

privately commissioned

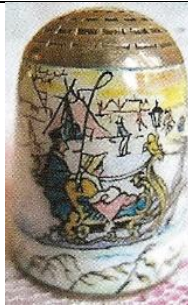
	 <p>'Black Douglas 'Dougie'' lettering in cursive <u>AJP – Birmingham – 925</u> with a rose</p>
 <p>'My Boy "Scottie"'</p>	 <p>'Red' '8-2-88/9-19-00' lettering in cursive with posies of roses and blue sprigs</p>
 <p>'Roger the Cat' enamelling right to the rim TCI fall 2006</p>	 <p><u>JS&S – Birmingham – 1975</u> 'Rhodesian Ridgeback'</p>



'Scottish Terrier'
lettering in cursive
with Scottish thistles

Anton Pieck

privately commissioned



one of this Dutch artist's paintings

The Poor Bird

privately commissioned



applied silverwork patterning on side panels
white roundel with roses and blue sprigs

Presidents of America

'Presidents of America' – is lettered around the rim of navy-blue enamelling and there is elaborate applied silverwork of an eagle on each side of the roundels - with each eagle facing towards the President's portrait.

Originally these were created as a set of 40 by 1983.

The set was offered for sale in a box lined with blue velvet, with spaces for the set to grow.

The President's name and term dates are lettered (mainly in cursive) on the verso in a white enamelled roundel, with applied sterling silver scrolls around the names' roundels.

The portraits are signed 'P.Swingler'.

These thimbles have the PS sterling marks lettered on the rim, with a variety of hallmark dates beginning in 1977 – 1984 – 1986 – 1990 – 2003.

The exception are the three additional thimbles, which were marked on the inner rim
G&N – Birmingham – 2003

The boxed set below, was added to in 2009 when the owner, Mary Cruwys, commissioned the extra three Presidents (42nd-44th), who came to office after the first set was created.

As the thimbles in their various sets were painted over many years, you will notice different portraits of the same President – and the short/long forms of names and dates: some are even facing in the opposite direction and the background behind the portrait is of a different colour.

limited to **3** sets (information from PS)

Swingler also painted privately commissioned single Presidents, but they did not have the royal blue rim with the 'Presidents ...' lettering. Look for them under their individual names.



A rare and probably unique set of forty three English silver and enamel thimbles by Peter Swingler (died 2015) commemorating the Presidents of the United States of America 1801-2009. Each thimble with an enamel oval portrait of the relevant president flanked to each side by an eagle, to the reverse an oval enamel plaque giving name, dates served and numerical ranking, within a cast scroll frame, over a frieze in blue enamel 'Presidents of America' (43)

A letter dated 22nd November 2009 from P. Swingler to Mary Cruwys states the following:

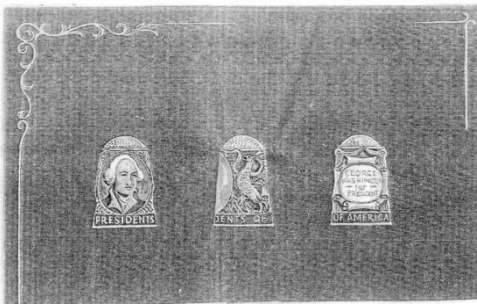
Dear Mrs Cruwys

I was pleased to hear from your letter that you have received, the Presidents of America. The sets were painted approximately 20 years ago, and only 3 sets were completed. I have noted from your letter that you would like your set brought up to date. Starting with:- Grover Cleveland for his 2ND term No. 24 also No. 38 Gerald Ford for his 2ND term No. 41 George H. Bush } No. 42 Bill Clinton } Total six No. 43 George W. Bush } thimbles No. 44 Barrack Obama } At this moment the Silver Thimbles are now being made ready for me to start painting. The cost for each Thimble would be £90.00 and will be completed in the new year. Would you please let me know if you have any queries. We hope you are both keeping well.

Yours Sincerely

P Swingler

copy of the handwritten letter from Peter Swingler to Mary Cruwys 2009, when the three additional President thimbles were purchased



This line-drawing example features George Washington without dates just 'First President'



PRESIDENTS OF AMERICA by PETER SWINGLER

All 40 United States Presidents are handpainted and signed by the famed English miniature artist, Peter Swingler. Hand crafted and hallmarked on antique sterling silver. Inscribed on the back in enamel; names, dates and number of each presidency. "Presidents of America" against cobalt blue hard enameling on rim. Eagles decorate each side. Purchase by series only, with delivery to begin February, 1984. A security deposit of \$500.00 must accompany your order, to be held as payment for the last five #36 thru #40, this series qualifies for T.O.M., but all 40 must be purchased within one year. I have received the first 12 of my set, only the second set to be issued, and they are magnificent!!
Limited to 20 SETS world-wide!!
484 \$100.00 each

original advertising material for the Presidents of America set – unknown source & date



1st President George Washington
1789-1797

PS – Birmingham – 1977

C: 1st President 1801-1809 [wrong dates] R: no dates



2nd President John Adams
1797-1801

L: PS – Birmingham

L: dates curved – R: straight



3rd President Thomas Jefferson
1801-1809

L: PS – Birmingham

L: dates curved – R: straight



4th President James Madison
 1809-1813 [incorrect date]/1809-17
 L: PS – Birmingham
 L: dates curved – R: straight



5th President James Munroe
 1816-25



6th President John Quincy Adams
 1825-29



7th President Andrew Jackson
 1829-1837
 L: PS – Birmingham



8th President Martin Van Buren
 1837-41/1837-1841

R: PS – Birmingham – 1984
 L: name written in one line – R: in two

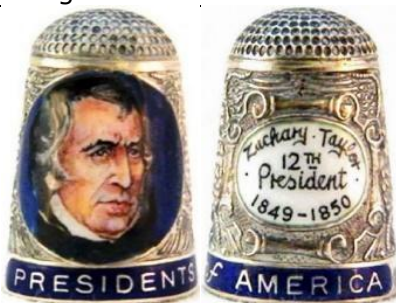
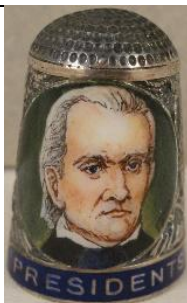
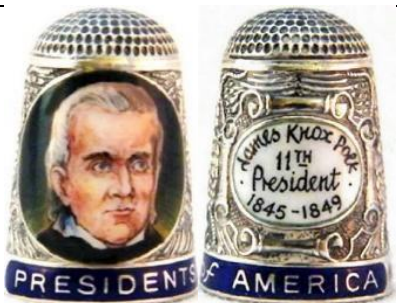


9th President William H Harrison
 1841



10th President John Tyler
 1841-1845/1841-45

L: PS – Birmingham
 L: dates curved – R: straight



11th President James Knox Polk
1845-1849
R: PS – Birmingham – 1986



13th President Millard Fillmore
1850-1853

R: PS – Birmingham – 1984

president's portraits face in opposite directions

12th President Zachary Taylor
1849-1850
L&R: PS – Birmingham – 1986



14th President Franklin Pierce
1853-1857

R: PS – Birmingham – 1984



15th President James Buchanan
1857-61

president's portraits face in opposite directions



16th President Abraham Lincoln
1861-1865

PS – Birmingham – 1984



17th President Andrew Johnson
1865-1869

R: PS – Birmingham – 1984

L: no dates



18th President Ulysses S Grant
1869-1877

R: PS – Birmingham – 1986



19th President Rutherford B Hayes/R B Hayes
1877-1881

R: PS – Birmingham – 1984 (K)

L: no dates

L: name lettered in cursive – R: printed



20th President James A Garfield
1881

R: PS – Birmingham – 1984

L: no dates

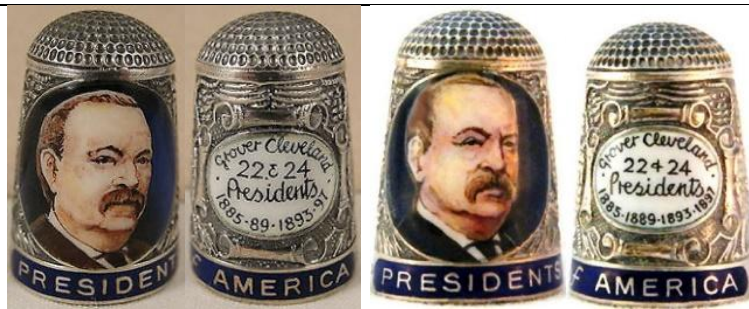
L: name lettered in cursive – R: printed



21st President Chester A Arthur/Alan C Arthur [incorrect name]
1881-1883

R: PS – Birmingham – 1986

name is printed (R) – in cursive (L)



22 & 24 Presidents Grover Cleveland
1885-89 1893-97/1885-1889 1893-1897
L: PS – Birmingham – 1984



23rd President Benjamin Harrison
1889-93
R: PS – Birmingham – 1984
name is printed (R) – in cursive (L)



25th President William M^cKinley
1819-1901/1897-1901
L: PS – Birmingham – 1984
this president's portraits face in opposite directions
name is printed (L) – in cursive (R)



26th President Theodore Roosevelt
1901-1909
L: PS – Birmingham – 1990
name is printed (L) – in cursive (R)



27th President William H Taft
1909-13/1909-1913

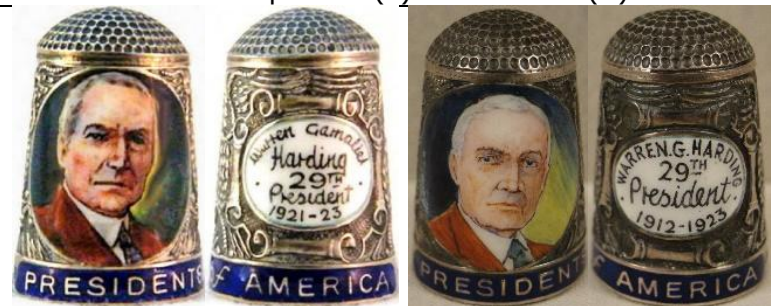
R: PS – Birmingham – 1977 (C)



28th President Woodrow Wilson
1913-1921/1913-21

L: PS – Birmingham

name is printed (L) – in cursive (R)



29th President Warren Gamaliel/Warren G Harding
1921-23/1921-1923

R: PS – Birmingham – 1984

name is printed (R) – in cursive (L)



30th President Calvin Coolidge
1923-1929

R: PS – Birmingham – 1984

name is printed (R) – in cursive (L)



31st President H C Hoover/Herbert-Clark Hoover
1929-1933/1929-33

L: PS – Birmingham

name is printed (L) – in cursive (R)



32nd President – F D Roosevelt/Franklin Delano Roosevelt
1933-1943/1933-43

L: PS – Birmingham – 1984

name is printed (L) – in cursive (R)



33rd President H S Truman/Harry S Truman
1945-1953/1945-53

L: PS – Birmingham – 1984

name is printed (L) – in cursive (R)



34th President Eisenhower/Dwight David Eisenhower
1953-1961/1953-61

L: PS – Birmingham

name is printed (L) – in cursive (R)



35th President John F Kennedy/John Fitzgerald Kennedy
1961–1963/1961-63

L: PS – Birmingham – 1984
name is printed (L) – in cursive (R)



36th President L B Johnson/Lyndon Johnson
1963-1969

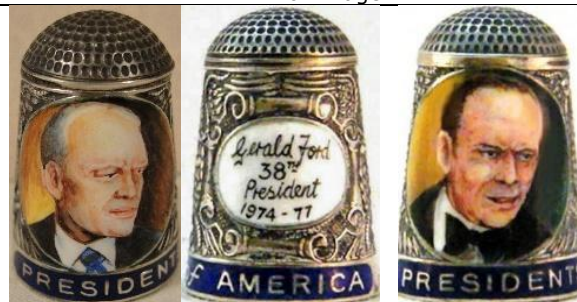
L: PS – Birmingham – 1984
name is printed (L) – in cursive (R)



37th President R M Nixon/Richard M Nixon
1969-1974

L: PS – Birmingham
name is printed (L) – in cursive (R)

L: mirror image



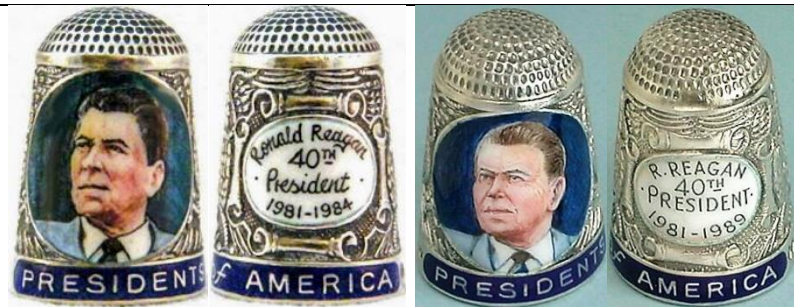
38th President G Ford/Gerald Ford
1974-77

L: G&N – Birmingham – 2000



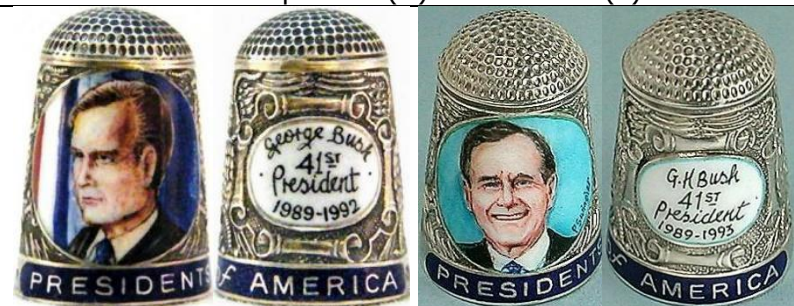
39th President J Carter/Jimmy Carter
1977-1981

L: PS – Birmingham – 1984
name is printed (L) – in cursive (R)
see also: Rosalind Carter



40th President Ronald Reagan/R Reagan
1981-1984/1981-1989

R: PS – Birmingham – 1984
L: PS – Birmingham
name is printed (R) – in cursive (L)



41st President George Bush/G H Bush
1989-1992/1989-1993

R: G&N – Birmingham – 2003



42nd President B Clinton
1993-2001
G&N – Birmingham – 2003



43rd President G W Bush
2001-09
G&N – Birmingham – 2003



44th President B Obama
2009
L: G&N – Birmingham – 2003

The Raising of the Mary Rose 1545-1982 privately commissioned



1982
'To commemorate the Raising of the Mary Rose 1545-1982'
applied silverwork patterning on side panels
white roundel with two roses
enamelled white Tudor Rose on red on apex with extra green enamelling

Rembrandt 1601-1669



1.

applied silverwork patterning on side panels



2.

applied silverwork patterning on side panels
white roundel with rose and sprig



3.

applied silverwork patterning on side panels

SAINT MARKS VENICE

privately commissioned (Linda Shaneyfelt)



JS&S – Birmingham

lettered in upper case

enamelling right to the rim

The Seamstress



1.

PS – Birmingham – 1985

cobalt blue enamelled sides

white roundel with rose and blue sprigs



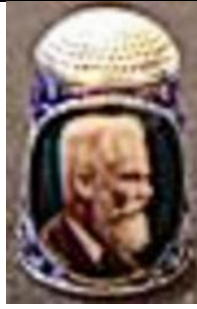
2.

2000

applied silverwork patterning on side panels

white roundel with rose and blue sprigs

George Bernard Shaw
privately commissioned



blue enamelled applied silverwork patterning on side panels

ship
privately commissioned



AJP – Birmingham

SKILLED HANDS FOR INDEPENDENCE 1977

These first appeared for sale in the US thimble catalogues by Roz Belford – *The Collectors Circle* – commissioned for her members. *The Collector's Circle* reserved one Skilled Hands for Independence thimble for presentation to The Daughters of the American Revolution (DAR) Museum in Washington D.C.



PS – Birmingham – 1977/1978

issued in celebration of Independence Day, July 4, 1977
depicts a seamstress mending uniform of a colonial soldier
limited to **1000** – only **80** were painted
(information from PS)

SOUTH DAKOTA HOMESTEAD

privately commissioned (Linda Shaneyfelt)



interesting apex decoration

The Straw Hat

privately commissioned
see also Girl in a Straw Hat



G&N – Birmingham – 2008
applied silverwork patterning on side panels
white roundel with rose

T.C.I. CONVENTION 1986

privately commissioned (Inez Oaktree)



commissioned by the Dutch thimble collector
for the Philadelphia TCI Convention
the apex appears to be of a brass colour – it is silver

Taj Mahal

privately commissioned (Linda Shaneyfelt)



JS&S – Birmingham – 1976
enamelling right to the rim

Thanksgiving

annual thimbles

These first appeared for sale in the US thimble catalogues by Roz Belford – *The Collector Circle/The Sewing Corner* – commissioned for her members.



1975

JS&S – Birmingham – 1975
showing the Pilgrim Fathers – and the turkey
enamelling right to the rim



1976

enamelling right to the rim
R: mirror-image



1977
JS&S – Birmingham – 1977
 lettering in cursive
 signed 'PS' in white
 enamelling right to the rim
 2nd L: woman in a mop cap



1978
 lettering in cursive



1979
PS – Birmingham – 1979 (E)
 lettering in cursive
 limited to **200**

MARGARET THATCHER



1.

'The R^T Hon Margaret Thatcher Prime Minister 1979'
lettering in capitals on white roundel
blue enamelled applied silverwork patterning on side panels



2.

'Margaret Thatcher Prime Minister 1983-1987'
applied silverwork patterning on side panels
lettering in cursive on white roundel, with a rose



3.



PS – Birmingham – 1984

'To Commemorate Margaret Thatcher 3rd Term of Office 1987'
applied silverwork patterning on side panels
lettering in cursive on white roundel with green ground
commissioned by Thimble Society of London
all portraits seem different – top R no curl on R forehead?



4.

PS – Birmingham – 1982

'To Commemorate Margaret Thatcher 10 years as Prime Minister 1979-89'
 applied silverwork patterning on side panels
 lettering in italics on white roundel



5.

'The Rt Hon Margaret Thatcher Prime Minister 1979-90'
 applied silverwork patterning on side panels
 lettering in cursive on white roundel



6.

'Baroness Thatcher Prime Minister 1979-1990 25th Anniversary 2004'
 applied silverwork patterning on side panels
 lettering in cursive on white roundel

TO THE BRIDE

annual thimbles

These first appeared for sale in the US thimble catalogues by Roz Belford – *The Collector's Choice/The Sewing Corner* – commissioned for her members.

Was there a 1977 thimble issued by PS in this series?

According to CC the 1977 set was painted by Chris Harmer, whose initials appear below the bride's frock.
 (photos included in the introduction)



1975

JS&S – Birmingham – 1975
 enamelling right to the rim

signed 'P.Swingler' or 'PS' (alongside bells at R)



1976

JS&S – Birmingham – 1976 (B)
enamelling right to the rim
limited to 6



1978

enamelling right to the rim



1979

Queen Victoria

see also: Kings and Queens of England
both privately commissioned



1.

applied silverwork pattering on side panels



2.

PS – Birmingham – 1976
Prince Albert and Queen Victoria
boxed pair

applied silverwork pattering on side panels over black ground
there is a patterned rim to the portraits
handpainted roses complete the white panel on the verso



3.



PS – Birmingham – 1982
'Queen Victoria Prince Albert'
lettering in cursive

applied silverwork pattering on side panels over black ground
there is a patterned rim to the portraits
handpainted roses complete the white panel on the verso

George Washington

These first three designs appeared for sale in the US thimble catalogues by Roz Belford – *The Sewing Corner*, spring 1978 – commissioned for her members, to commemorate the Bicentenary of Independence 1776-1976.

There are many versions of the 'Washington Crossing ...' design over the years
see also: Presidents of America

1.



PS - Birmingham – 1978

'Washington at Prayer Valley Forge/Christmas 1777 Remembered 1977'
upper R: the prototype offered by The Collectors Circle in 1978. The date on the verso is placed differently
limited to **25**

2.



JS&S – Birmingham – 1973 – 1976 - 1977

'Washington Crossing the Delaware 1776'
based on the painting by Emanuel Leutze
signed 'P.Swinger' in white/'PS' on lower right next to scroll

limited to **25**
 also offered for sale by Jean Shoup, Thimbles Only, winter 1984
 offered as a special prize by The Thimble Guild in February 1995



3.

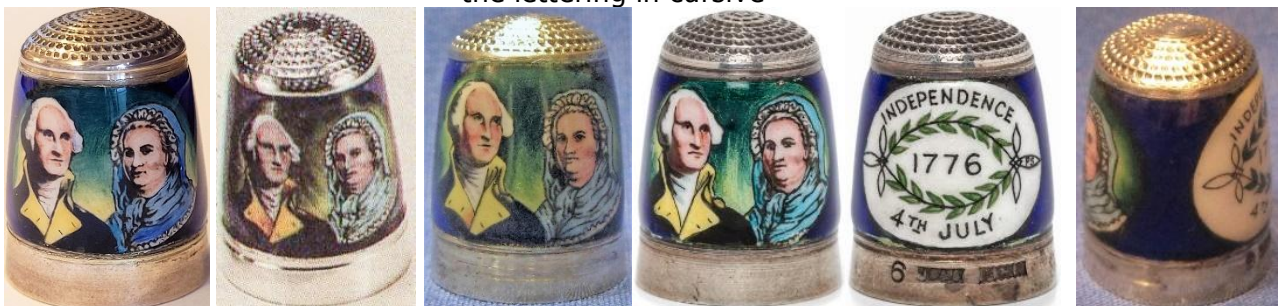


C: PS – Birmingham – 1984

4.



tho the longer indentations are the same as the thimbles above, there is a white enamelled band with the lettering in cursive



JS&S – Birmingham – 1974/1976

'George and Martha Washington'

'Independence 4th July 1776'

(another not shown is for 1975 with JS&S hallmarks, marked 'Jerusalem Silver' in the apex with a rolled rim)

limited to **25**

signed 'PS' in the right leaf of the wreath

5a.



JS&S – Birmingham – 1973/1976

'George and Martha Washington'

'Independence 4th July 1776'

missing buttons on R lapel



5b.

JS&S – Birmingham – 1973

collar is erect – with larger figures than 1976 versions



6.

G&N – Birmingham – 2005

'George Washington President 1789-97'

applied silverwork sides' patterning

lettering in cursive on white roundel

similar to the Presidents of America set. It has no navy blue rim which identifies that set

PRINS WILLEM III & PRINSES MARY II 1688-1988

commissioned by Kay Sullivan of *De Vingerhoed* in The Netherlands



PS – Birmingham – 1988

‘Prins Willem III & Prinses Mary II Nederland – Engeland 1688 1988’
 lettered around royal blue enamelled band – blue enamelled medallion with the official emblem for the
 tercentenary (300 year) celebration of their marriage on verso
 a double portrait in one roundel
 with a sprig of leaves on each side of the portrait
 see also: Kings & Queens - William III

Prins Willem Alexander and Prinses Maxima 2 Februari 2002
privately commissioned (Anne Jansen)



Dutch Royal wedding
applied silverwork sides' patterning

H.R.H. Prince William



1.

'To commemorate the birth of H.R.H Prince William of Wales June 21st 1982'
with his mother Princess Diana
applied silverwork sides' patterning
lettering in cursive on white roundel



2.

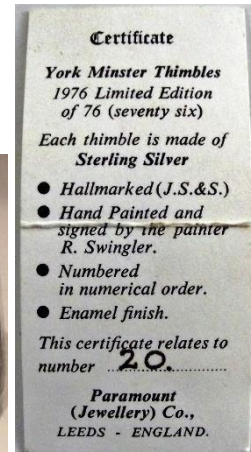
commemorating 'The Royal Wedding of Prince William & Catherine 2011'
lettering in cursive on blue enamelling
limited to **20**



3.

commemorating 'Prince William to Catherine The Royal Wedding'
lettering on white enamelled rim
'29th April 2011' on white and blue enamelled ribboning on verso
a double portrait in one roundel

YORK MINSTER 1976



JS&S – Birmingham – 1976

enamelling right to the rim

lower R: a boxed example has accompanying certificate
from jeweller Paramount (Jewellery) Co, in Leeds

limited to **76**

The Young Bull / The Young Bull + Paulus Potter



1.

PS – Birmingham



2.

G&N – Birmingham

the marks are on the outer rim

Other Swinger handpainted items

boxes



G&Co Ld – Birmingham – 1993
'Garrard & Co 112 Regent Street London' lettered on inside base
sterling box with enamelled lid
dimensions: 51×27.5×12 mm (the size of a large matchbox!!)
ascribed scene – **Birkhall** Aberdeenshire in Scotland (not named)
King Charles III's Scottish home at Balmoral

References

- Roz Belford *Collector Circle Gazette/The Sewing Corner/The Sewing Circle*
Bleasdales catalogues. 2016, 2017, 2018, summer 2019, summer 2024
Mary E Craft and Mickey Waldron photographer *British royalty – thimbles by Peter Swingler*. TCI 2014
Lydia Hamilton *Enamel thimbles – some history and some examples*. Needlework Tool Collectors Society of Australia
Newsletter. April 2011
Paula Moore *An American commemorative thimble*. Sampler & Antique Needlework Quarterly, vol. 31, June 2003
Joan Roberts *Report of Peter Swingler's talk at October meeting 'Regalia and thimbles'*. At Your Fingertips January 1999
Clara Sennheim *My special Johnny Carson thimble*. TCI Bulletin spring 2005
Linda Shaneyfelt *Peter Swingler*. TCI Bulletin fall 2009
Norma Spicer *James Swann maker of gold and silver thimbles*. 1997
Thimble Society of London catalogues
Thimbles Only winter 1984 catalogue
De Vingerhoed catalogues
Estelle Zalkin *Zalkin's handbook of thimbles & sewing implements*. 1988

Contributors

Barbara Acchino | Wendi Aguiar | Joanne Blackie-Sew Many Bits | Jenny Bockel | Mary Craft | CyberThimble
Helen Deruiter | Bertus van den Dikkenberg | Joy Carlsen Earles | Kit Froebel | Elaine Gaussen | Lydia Hamilton
Linda Heggs | Barbara Hluboky | William Isbister | Anne Jansen | Mildred Jarvis | Friedy & Gerrit Kamp
Carolyn Meacham-Elegant Arts | Wynneth Mullins | Daria Phair | Pat Rich | Ray Nimmo | Andy J Poole | Pat Rich
Mabel Rogers | Wolf-Dieter Scholz | Irene Schwall | Clara Sennheim | Linda Shaneyfelt | Jean Shoup
Kay Sullivan-De Vingerhoed | Andy Taylor | Jean Taylor | Valentin Volgin | Mickey Walbrun | Jenny Yuh

This listing of Peter Swingler thimbles does not purport to be complete or accurate in all aspects.
Rather it invites comment and contribution to add to our knowledge. My thanks to the contributors.

EMAIL thimbleselect@bigpond.com TO SHARE YOUR KNOWLEDGE

© Sue Gowan
June 2017