

# Australian handpainted thimbles and sewing tools

1973-2014

*Thimbles of Australia* was published in 1998. In the succeeding twenty years many new handpainters have come to light. I have no way of sharing these new finds, other than creating a new Learn More About ... Thimbles topic.

This topic will broaden out from traditional handpainted china and porcelain – all handpainted thimbles are included together, no matter what the artist has used to hand decorate the thimbles, nor the medium on which the artwork is created: china, papier-mâché, ivory etc.

Porcelain painting has a large following in Australia and miniature painting on thimbles requires great skill: that surface is small. Australian fauna is a difficult subject to capture accurately in miniature (rarely are kangaroos painted and just a few koalas), so one tends to find floral handpainted thimbles in the main. Artists have been encouraged to sign their works and signed handpainted thimbles are eagerly sought after.

The blank thimbles first used in china painting tend to be squat in shape with a matt finish and were imported from Japan and Czechoslovakia.

With the regular scarcity of blank thimbles to paint, artists turned their hand to making their own blank thimbles

Many of these artists began as hobbyists.

Australia's Bicentenary in 1988 was the catalyst for a growing interest in Australiana. Those that became passionate about their hobby turned it into a small business (Lynn Richards and Val de Vries etc). This necessitated marketing and sales. Thimble mail order catalogues or small shops and wholesalers flourished in Australia to get these handpainted thimbles from the artist to thimble collector. They would also commission thimbles.

Beryl Warne (her shop *Thimble Collections* in Melbourne 1983-1986)

Margaret and Jihl Berry (*Thimble Collections* Mt Eliza Victoria 1986-1990)

Yvonne Varey (*Gallery One* wholesaler Perth/Melbourne 1985-2014)

Barbara Kelly (*The Thimble Collector* Hamilton in Newcastle 1986-1993)

Sue Gowan (*Thimbleselect* 1988-2020 The Gap Queensland)

Dorothy Andrews (*Thimbella* Meadows near Adelaide 1985-2012)

Helen Burgin (*Addaline Miniatures* Sydney 1980s-1994)

Ann and Dick Wallace (*Pan Arts* Sydney thimble wholesalers 1980s-2010s – who had contacts with *Thimble Collectors Guild* in Scotland, which saw Australian thimbles disseminated worldwide).

Handpainted thimbles were as popular in the USA, as here. Collectors should be aware that US handpainted thimbles are identical in shape to those used by Australian thimble handpainters in the 1980s. Unless the subject is Australian or has a local place marking, it may not be an Australian handpainted thimble. And some may inadvertently have slipped in here

The global financial crisis of 2008 saw the beginning of the end for Australian thimble handpainters – markets disappeared as collectors slowed their quest for all thimbles.

Most of these artists no longer paint thimbles, but there will be a whole new crop to chase from these pages ...

I will combine all known artists who handpainted thimbles in one alphabetical sequence (by surname or by the first initial if those are the only marks): no matter on which medium they painted or decorated.

Where a date is lettered in the thimble, this is included. The earliest found is 1973, 2014 is the latest dated thimble.

This topic does **not** include overseas artists who painted thimbles with Australian themes (some of whom were included in *Thimbles of Australia*) – Gail Boekel - Dunheved – Heirloom Editions – Anya Kooiwind Klima – Heather McLean - Julie Menzies - Graham Payne – Royal Worcester - Russell and Creed White Heron – Virginia Wellman (Ginnie).

If you are a thimble painter, please share any further details – thimble collectors please share your photos of Australian handpainted thimbles or makers that have been omitted.

**132** Australian handpainters are listed.

When only the initials are shown they are filed by the last initial i.e. BLS is shown at the beginning of the S sequence.

I am aware of the following Australian china thimble painters - I just don't have a photo  
Strangely many on this list of china painters are the same ones listed in the Appendix 3.

J B Andrews Sydney | M Bate 1997 sold in Georges Melbourne | Jo Bedingfield Sydney 1987  
Helen Brown Newcastle 1992 (roses) | N Carriage Canberra (birds) | Helen Davies | Donna Driver  
Kitty Drok | N Faris | Margaret Faulks | L Forster Newcastle NSW 1992 | J Fraser | N Freeman | Jay Gabb  
Gavan | Alva Gooden Perth 1980s | Olive Gumley | Marilyn Hulbert | Beryl Job 1977  
Melva Keeley 1977 | Lyn Larkin | D Lee Canberra 1985 | N Main 1981 | I Matthews | Carol McCormack  
D Mitchell | Lorna Mitchell | J Moyle | J Newton NSW | Joy Noel Brisbane (wattle 1996) | L Pearson  
Grace Phillips | S Rains | Gillem (Edna) Reid New Norfolk Tasmania | Jan Schubert Adelaide 1980s  
C Simpson | I Stephens | Heather Taylor Perth | Elva Tesdarieo | P Tuck | M Welch Gunnedah NSW  
D Young 1978

Before around 2000, a grass trees were known as a blackboy. If this term was used on the thimble, I have shown it but the correct name is a grass tree (xanthorrhoea).

I have used inverted commas to show any lettering on the thimbles (and followed the spelling used) – the rest are my own descriptions for collectors who are not familiar with Australian flora and fauna.

There are very few handpainted Australian sewing tools, so it makes sense to include with the painter's thimbles.

For other Australian thimble topics see:

Australian advertising thimbles  
Australian modern sterling silver thimble and sewing tools makers  
Australia's Elfin thimbles  
Sydney Opera House thimbles

For other handpainted thimble topics see:

Australian wooden thimbles and sewing tools  
Cornish Enamels thimbles 1995-1997  
Francesca character head thimbles  
Gerald Delaney handpainted thimbles  
Graham Payne handpainted thimbles  
Hazrah handpainted bronze thimbles from Mauritius 2006-2009  
Iles' handpainted and decaled plastic thimbles  
Jacqui and David Parker of Olivia (Birmingham) thimbles 1983-1996  
Jasper's of Yorkshire handpainted thimbles  
Merryfield Pottery (Devon) thimbles  
Modern British hand-decorated wooden thimbles  
Modern British handpainted thimbles  
Roger Gibbons pewter thimbles 1984-1990  
Roger Harrison of Kelso thimbles 1983-1988  
Royal Worcester thimble painters  
Scottish wooden thimbles

## Handpainted thimbles

**Pat Adam**  
CHINA/PORCELAIN  
Kingston, Adelaide

Pat Adam is a china painter of some renown. Her fine brushwork of mini flowers and native animals is often found on thimbles. Pat was a member of South Australian Digitabulists Society  
She also handpainted wooden thimbles

 <p>'AUSTRALIAN KOALA'</p>	 <p>'10<sup>TH</sup> ANNIVERSARY S.A.D.S. 1998'</p>	 <p>'S.A.D.S. EST. 1988 STH. AUSTRALIA' painted on Dorothy Andrews' porcelain thimbles</p>
 <p>Sturt desert pea bouquet</p>	 <p>owl</p>	 <p>'AUSTRALIAN WATTLE'</p>
<p>no photo</p> <p>FLOWERING GUM 1987</p>	<p>no photo</p> <p>roses 1987</p>	<p>no photo</p> <p>KANGAROO PAW 1988 painted on Dorothy Andrews' green porcelain thimbles</p>
		

**Jessie Adams**  
PORCELAIN



**Jo Allen**

PORCELAIN

Mackay, Queensland

her thimble is signed on the outside



gum flowers



**Dot Andrews**

PORCELAIN

Meadows, South Australia

Dot sold thimbles thru her mail order thimble catalogue, *Thimbella*. She was a potter and created unglazed porcelain blank thimbles for sale to handpainters, at her Paris Creek Pottery. She made them in green, blue, apricot, pink, lilac, off-white black and white

You may notice how many of Australian thimble artists originated in South Australia. And for this, there is only one person to acknowledge. Dot worked tirelessly, encouraging every handpainter she met to try thimble painting: with great success



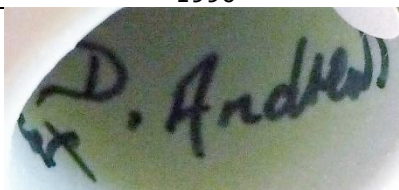
'Bottlebrush Australia'  
1996

no photo

black with flowers  
1989



1990



**Jo Armstrong**  
PORCELAIN



blue wren

**A Arnold**  
PORCELAIN  
Western Australia



'Kangaroo Paw'  
1983



'Leschenaultia'  
1983



**H.B.**  
PORCELAIN



Kingfisher



Rainbow lorikeet



**Diane Baker**  
PORCELAIN



'Blackboy'

**Irene Barnett**

STONEWARE

North Nowra, New South Wales

Irene Barnett is the originator of Chelsea Girl Stoneware. Irene started pottery in 1979 after being unsuccessful in finding a potter to make cream dishes or pots for the Tearooms she and her husband ran at the Cambewarra Lookout NSW.

This led to creating their own souvenirs of stoneware and her fine white matt stoneware thimbles resulted. They all have 'Cambewarra Lookout NSW' printed on the thimbles. Irene made between 75 and 100 of these thimbles. From 1990, no further thimbles were produced

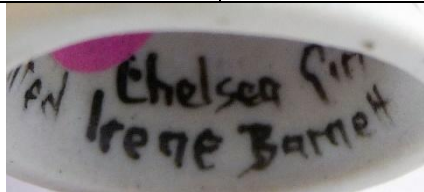
Other designs she painted were blue wren, waratah, Kangaroo Valley Bridge, map of Australia and a few kangaroo



'Cambewarra Lookout N.S.W' with kookaburra



koalas



**Jocelyn Bayliss**

PORCELAIN

Queensland



Christmas Bells  
1982



'Cooktown Orchid (Dendrobium Bigibbum)'  
1982



'Donkey Orchid (Diurnis)'



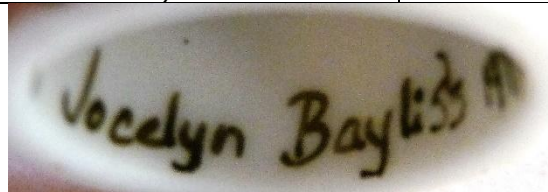
'Pink Boronia'  
1979



'Pink Boronia (Boronia Muelleri)'



'B...'



**Beate's  
PORCELAIN**

North Queensland

Beate trained as a master painter at Royal Berlin Porcelain. She arrived from Germany to settle in Sydney. Beate Wickert imported porcelain blanks from Limoges. Dot Andrews asked her if she would paint thimbles. These thimbles were all stock items built up over the years. Her apexes are painted gold. She also undertook commissions.



Beate was no longer able to procure quality blank porcelain thimbles to paint. Ceased 2006.



Australian Fauna  
wide green band



Australian Flora  
green vertical stripes



Australian Fauna  
green vertical stripes

L: fauna facing in opposite direction with more ornate gold rim



Australian Flora  
no top-coloured band



Australian Flora



Australian Flora



Australian Flora  
vertical blue stripes



Australian Flora  
smaller flowers  
early unsigned  
unpainted apex



Basket



Black Rose



Blue Diamond



Blue Wren



Bow



Cobalt Posy



Forget-me-nots



Furstenberg



Green Rose



Musical



initial 'B'  
commission





initial 'M'  
commission



Pansie Blue Stripe



Pansy



Pansy  
early unsigned



Pink Rose



Rose Gold



Sturt's Desert Pea



Pansie Blue Stripe button



Bow button



Forget-me-not button



button



Pansie Blue Stripe  
needleholder



Pansie Blue Stripe  
thimble holder



Blue Diamond  
needlecase



Forget-Me-Not  
thimble holder





**Jamie Bell (JB)**  
 WHALE TOOTH IVORY  
 Albany WA



'Running Home'  
 scrimshaw sailing ships

**Shirley Bennett**  
 PAPIER-MACHÉ  
 Apollo Bay, Victoria

The late Hal Bennett created a papier-mâché thimble in 1979, which led to a cottage industry. Hal, an instrument maker. They traded under the name Haley, a combination of both their names. Approximately 800 thimbles were produced by the Bennetts. Shirley, a talented artist, did all the artwork and handpainted the thimbles. A feature of Shirley's artwork is that the apex is hand decorated. They all have a sticky label inside. Rarely do the thimbles bear Shirley's initials. A novel idea on a many of the thimbles was an Australian opal set into the apex

Over 800 Haley thimbles were made over a period of six years - till 1985



'AUSTRALIA'  
 platypus - emu



'BOWER BIRD AUSTRALIAN  
 COLLECTORS CLUB'  
 1984



emus with leaves  
 '26.8.80'



goanna



kangaroo  
 'AUSTRALIA'



kangaroo  
'1985  
AUSTRALIA'  
opal in apex



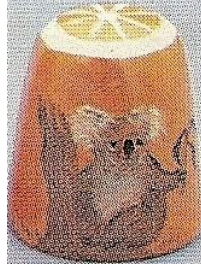
kangaroo - echidna



kangaroo - koala



koalas  
'AUSTRALIA'



koala



koala - boomerang  
'AUSTRALIA'



koala



koala  
'1985'  
AUSTRALIA'  
opal in apex



Aboriginal design  
b&w photo



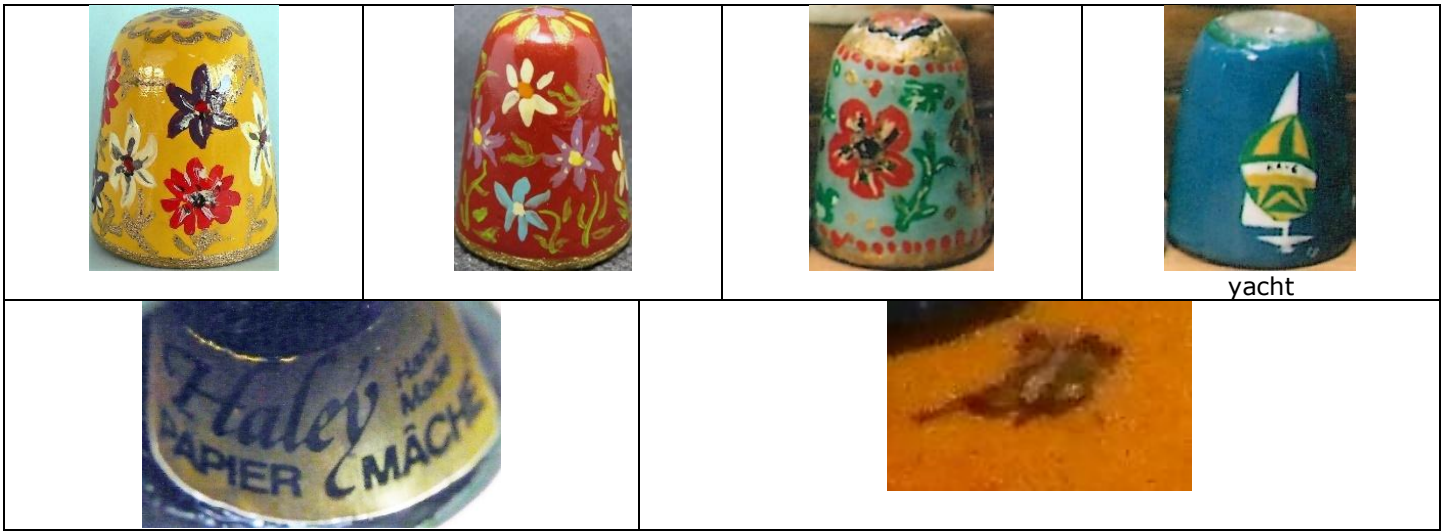
opal in apex



mine shaft - spades  
opal in apex



'CLIFF YOUNG BEECH FOREST'



**Marilyn Berrington**  
PORCELAIN



**L Betts (LB)**  
PORCELAIN





on

flower



flower



L; used more frequently 1982-1984

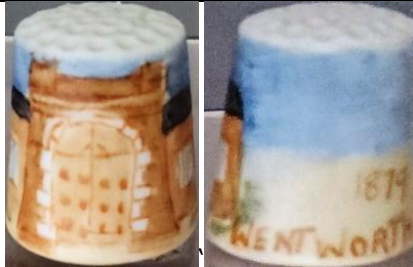
**Blaskett**  
CHINA



kookaburra



**T Bloomfield**  
PORCELAIN



'1879 WENTWORTH GAOL'



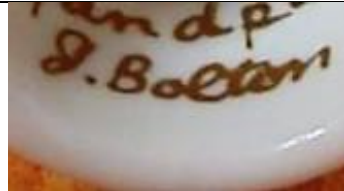
**Jean Bolton**

PORCELAIN

her apexes are handpainted gold



'Japanese GARDEN COWRA Australia'



**Marjorie Brook (MB)**

PORCELAIN

South Australia

Marjorie matched her rims and apices in matching colours



'Port Elliot'



'Port Elliot'  
1986



'Port Elliot'  
1988



'Victor Harbour'



'Victor Harbour'



seagulls



**Pat Brown (P Brown)**

CHINA/PORCELAIN

Adelaide

Pat was a thimble collector. Some of her apexes are painted gold  
1980s



**Helen Brunton**

PORCELAIN

Adelaide

1980s

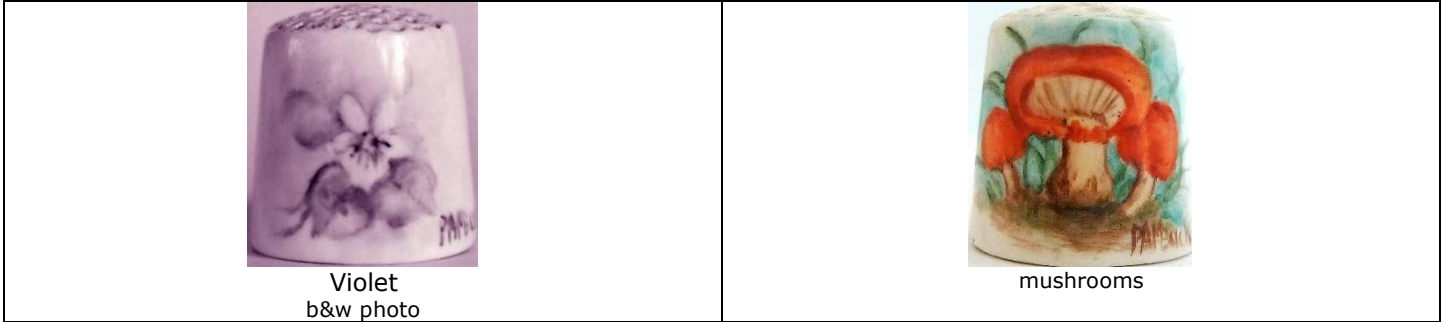


**Pamela Buchanan**

PORCELAIN



**Pam Buck**  
 PORCELAIN  
 Hahndorf, South Australia  
 signed on thimble's outer side



**T Bulley**  
 PORCELAIN



**Joy Cakebush**  
 PORCELAIN  
 Broken Hill, New South Wales



**Helen L Callander (H.L.C.)**  
 PORCELAIN  
 South Australia  
 most of her apexes are painted gold  
 1980s







'MOONTA S.A.'  
1991  
miner



miner's cottage



'KADINA S.A.'



'LITTLE CORNWALL SA'



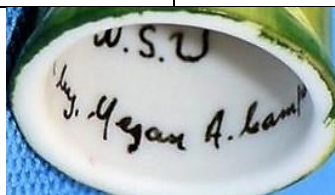
**Megan A Campbell**  
PORCELAIN  
Sydney



flannel flower

no photo

Bottlebrush  
1981



**Gwennyth Campbell-Stewart**  
PORCELAIN  
Brisbane



'Leschenaultia'



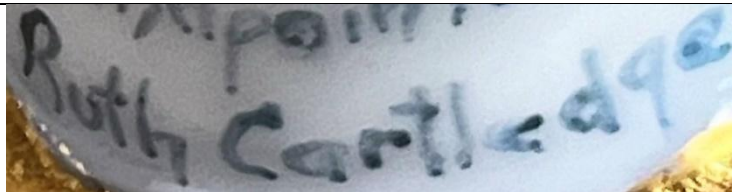
'Forget me nots'  
October 1994



**Ruth Cartledge**  
CHINA



blue wren  
gold apex and gold rim  
1983



**Peg Christie**  
PORCELAIN  
Brisbane

This artist paints matching rims. The rim is also gold painted at the open edge of the thimble



'Sunflower  
Queensland'



'Poinsettia  
Queensland'



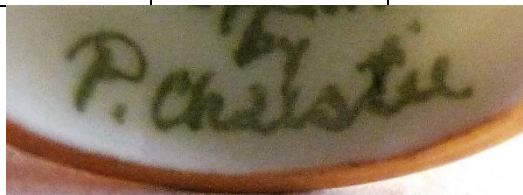
'Viola  
Hederacea'



'Koala Australia'



'Vanilla Lily'



**P Coldbeck**  
PORCELAIN

this artist uses gold paint for the indentations on apex



lechenaultia



bottlebrush

**Mary Covill**  
PORCELAIN



gum blossom  
1988



**A Craigie**  
PORCELAIN



gold painted apex






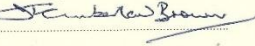



**James Cumberland-Brown (J.F.C.) WA**

James is renowned for his scrimshaw. He acquired a great quantity of Sperm Whale teeth before the sale of whale ivory was banned in 1972. This miniaturist, from the Royal School of Fine Arts, has created exquisite scrimshaw thimbles. The scenes are carved with a probe or sharpened nail and then black oil paint is rubbed into the carving, to bring them to life. The thimbles were supplied with a certificate proclaiming 'This is to certify that this tooth was taken off the West Australian Coast prior to 1972'.

James turns the thimbles himself, and the shape varies from thimble to thimble. Originally residing in York, Western Australia, where visitors to 'Hillside' could watch this artist at work, he then moved to East Fremantle.

James died in 2003.

			
flowers and leaves	acorns	band of flowers	sailing ship
			
sailing ship and lighthouse	sailing ship 'Endeavour'	band of flowers and leaves	
			
lighthouse	posy of flowers and leaves	koala	flowers
			
flowers	posy of flowers and leaves		
	<p><b>Certificate of Authenticity</b></p> <p>THIS IS TO CERTIFY THAT THIS SCRIMSHAW WAS CREATED BY</p> <p><b>JAMES CUMBERLAND-BROWN</b> IN HIS STUDIO AT "HILLSIDE", YORK, WESTERN AUSTRALIA.</p> <p>SIGNED: </p>		<p>THIS IS TO CERTIFY THAT THIS TOOTH WAS TAKEN OFF THE WEST AUSTRALIAN COAST PRIOR TO 1972</p> <p>SIGNED: </p> <p>DESCRIPTION OF PIECE <i>Thimble with ship and lighthouse</i></p>



JCB York W.A. 1991

**Cynthia**

PORCELAIN

Toowoomba, Queensland

<p>no photo</p> <p>'Barn owl'</p>	<p>no photo</p> <p>'Blue wren'</p>	<p>no photo</p> <p>'Eastern spinebill'</p>	 <p>'Stilt'</p>
-----------------------------------	------------------------------------	--	--

**Rita Daniel (RD) / Rachel Dettmann (rd)**

CHINA

Kyneton, Victoria

Originally from Worcestershire in England, Rita and Peter Daniel settled in Australia in 1983. There they founded the Kyneton Fine China Studio in 1987. Peter made thimble moulds and Rita is an artist of exceptional talent having started in the Royal Worcester training school at the age of 17

In 1995 Kyneton Fine China launched a bone china range of thimbles. Using clay imported from England, the thimbles are made in Kyneton. Rita's earlier thimbles have a painted dark cobalt blue background, by Rita Daniel and more recently by Rachel Dettmann. Each design is limited to **100** thimbles, and the thimble is numbered and boxed, with a certificate of authenticity that in turn bears the artist's signature and the number in the series. These were all stock items built up over the years

Thimbles signed on the outside

Rita Daniels retired in 2009 when Kyneton Fine China was sold

 <p>blue wren RD</p>	 <p>blue wren RD</p>	 <p>blue wren</p>	 <p>blue wren RD</p>
 <p>blue wren RD</p>	 <p>yellow pansy RD</p>	 <p>pink pansy RD</p>	



white pansy



wattle  
RD



red robin



yellow eye  
RD



kookaburra  
RD



kookaburra  
RD



koala



'1996'  
gumnuts  
RD



daffodil



daffodils  
RD



'2003'  
:Celebrating the International  
Year of Freshwater'  
Freedom'



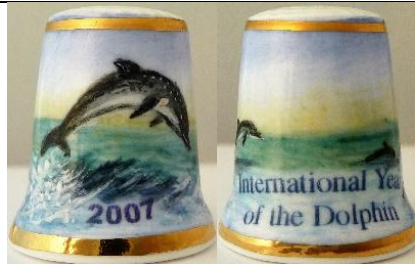
'2004'  
'Celebrating Daffodils DownUnder'



'2005'  
'Celebrating Australian  
Wildflowers'  
RD



'2006'  
'Hanging Rock Central Victoria'  
RD



'2007'  
'International Year of the Dolphin'  
RD



'2008'  
'Celebrating Beautiful Banksias'  
RD



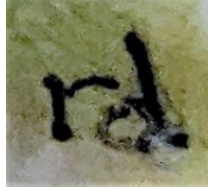
blue wren  
rd



kookaburra  
rd



Rita Daniel (upper case)



Rachel Dettmann (lower case)



Rita Daniel

**Danté**  
PORCELAIN  
gold painted apex



'Australian wattle'

no photo

Forget-me-nots



violet



**Val de Vries**

CHINA – METAL

Clare, South Australia

Val de Vries has been a china painter for forty years. This includes teaching china painting. Val began painting thimbles in earnest when she was commissioned by The Thimble Guild in Scotland in 1999 to produce her handpainted range of china thimbles

Some of her apexes are handpainted gold. Many thimbles are dated + ©. Some have a lustre finish. She also undertook thimble commissions

Val turned to painting china thimbles when there was a scarcity

 <p>Agate TTG June 2004</p>	 <p>agate - bloodstone TTG December 2004</p>	 <p>agate – lazulite TTG September 2004</p>	 <p>agate – rhodonite TTG August 2004</p>
 <p>agate – spider web turquoise TTG November 2004</p>	 <p>amaryllis TTG August 2005</p>	 <p>apples TTG June 2002</p>	 <p>Art deco TTG October 2010</p>
 <p>'Be my Valentine'</p>	 <p>Blue Delft TTG August 2006</p>	 <p>Christmas 2001</p>	 <p>Christmas 2002</p>
 <p>'Christmas 2003'</p>	 <p>Christmas 2005</p>	 <p>Christmas 2006 Snowman TTG December 2006</p>	 <p>Christmas 2006 Church TTG December 2006</p>
 <p>Christmas</p>	 <p>Cornelli work TTG June 2003</p>	 <p>Delft</p>	 <p>daisies TTG June 2006</p>



			
Easter TTG August 2001	Easter TTG August 2001	Edward and Edwina Bear TTG August 2001	floral basket TTG January 2002
			
forget-me-nots TTG August 2001	forget-me-nots 2003	forget-me-nots 2008	forget-me-nots metal
			
fuchsia TTG July 2005	gladiolus TTG September 2005	grapes TTG July 2002	'Happy New Year 2004'
			
hibiscus	'Joyce 80 16-2-1922' 2002 Commission TTG January 2006	koala TTG June 2001	lattice 2002
			
'Merry Christmas' 2001	'Mother' 2004	nasturtium TTG October 2005	New Year '2002' - '2002 Karl'
			
pansies	pansies	pansies	pansies



patchwork quilt designs – set of 12  
2002-2003



Patchwork quilt  
Dutchman puzzle  
2002



Patchwork quilt  
Friendship knot  
2002



Patchwork quilt  
Irish chain  
2002



Patchwork quilt  
Sawtooth patch  
2002



Patchwork quilt  
Sunshine & shadow  
2002



peaches  
TTG August 2002



pears  
TTG February 2002



pimpernel  
TTG February 2004



poppies  
2006



poppies



Poppy  
TTG November 2005



remembrance poppies  
2003



rose



roses



roses



Scottie dogs  
2000



Serenade for St Patrick  
TTG February 2004



snowman  
2003



trellis  
TTG March 2004



tulip



Uluru  
2003



Valentine  
TTG February 2004



violets



violets and robbons  
TTG February 2005



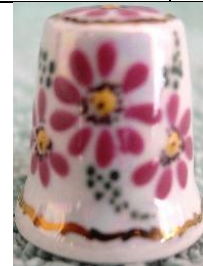
Whistle while you work



2001



2003



thimble holder



**Gerald Delaney**

CHINA

Adelaide

Gerald E. Delaney was one of the foremost ceramic artists in the United Kingdom. He spent long spells in Australia in the 1980s and the early 1990s and painted many thimbles during his stay. Gerald was born in 1933. He studied art at the Worcester Victoria Institute and served a seven-year apprenticeship with the Royal Worcester Porcelain Company between 1948 and 1954 and he returned to Royal Worcester in 1971 until 1973

He specialised initially in fruit designs. Only his thimbles painted whilst he lived in Australia are featured here His apexes are painted gold. The rim is also gold painted at the open edge of the thimble



kookaburra



lyre bird



robin



maker's mark

**R Dland**

PORCELAIN

Fremantle, Western Australia

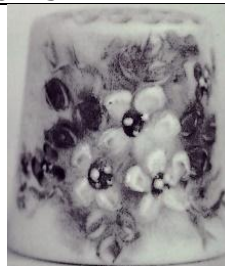


'Kangaroo Paw'

**A Duerden**

PORCELAIN

Mittagong, New South Wales



forget-me-nots

1988

b&w photo

**Judy Dyer**

PORCELAIN

Melbourne

Judy's thimbles are signed and dated inside in gold  
she was most prolific in the 1970s



'Spider Flower Nodding Greenhood Bottlebrush'  
1977

no photo

'Bottlebrush Nodding Greenhood Boronia Spider Flower'  
1978



'Christmas Bells Nodding Greenhood Pincushion'  
1979



**Elizabeth Endisch (E)**

PORCELAIN

Bridgetown, Western Australia

Elizabeth Endisch is well known for her porcelain work. She makes porcelain collectors plates and to hand decorate.

Her most well-known design is based on the Aboriginal dot design

With some persuasion by Sue Gowan in 1989, Endisch made porcelain thimbles for the first time. These were an experiment using her dot design. It proved too time consuming so only four were ever made. Her porcelain thimbles now have a swirled pattern to them. The shape is distinctive with markedly sloping sides and a raised rim. Initially signed with large painted 'E'. Her later thimbles have no maker's marks. The rim is painted green at the open edge of the thimble



b&w photo





*Elizabeth*

This unique porcelain work of art was designed, hand made, hand painted and inscribed by Elizabeth Endisch of Manjimup, Western Australia.

Elizabeth hand mixes each colour which she applies using brushes made of hair from her dog 'Kaz'.

Firing to 1200°C, the decoration fuses to the clay and becomes virtually impossible to erase.

The high degree of skill and unusual 'Australiana' artwork combine to give a work of great beauty and durability.

**Eva Field**  
PORCELAIN  
Sydney



'Kangaroo & Joey Australia'



**Jan Finch**  
PORCELAIN  
signed



'150th Anniversary of the BUSH family 1835-1985'

**Perry Fletcher**  
CHINA



emu

**Flora**  
PORCELAIN



flannel flower - wattle



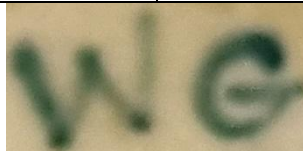
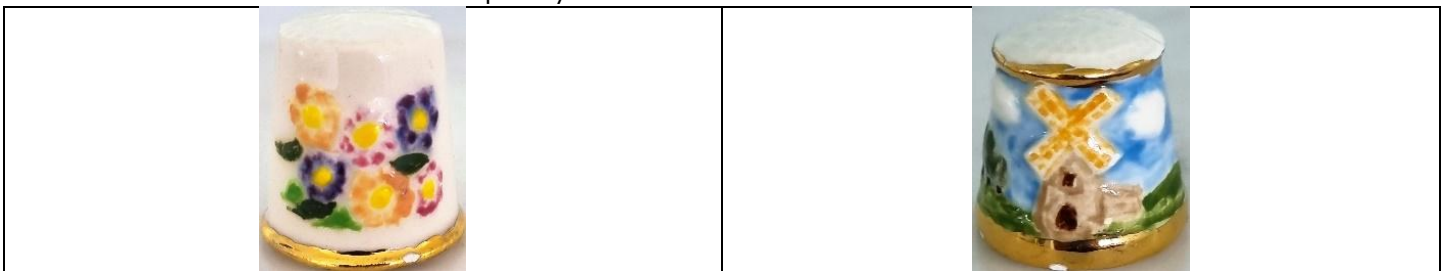
**E Formenti**  
PORCELAIN



**WG**

EARTHENWARE  
see also: EDK

paint yourself earthenware kit thimbles



signed in apex with 01 for 2001

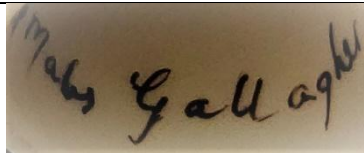
**Mabs Gallagher**

PORCELAIN

Canberra



waratahs  
gold painted apex  
1993



**J Gamble**

PORCELAIN

Sydney

some of her thimbles are dated inside and some signed inside – some on the outside



1988



'Koala'



'Australia Parrots'



'koalas - kookaburra'



Bennelong - boomerang



'Koalas'  
1988

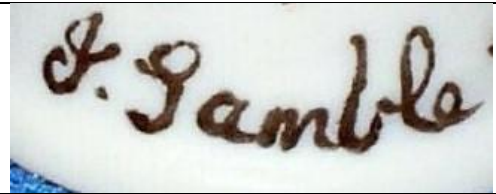


'Koala' - Sydney Harbour Bridge  
1988



grass trees





**Gellie**  
PORCELAIN



wattle



**Fay Gosling**  
PORCELAIN



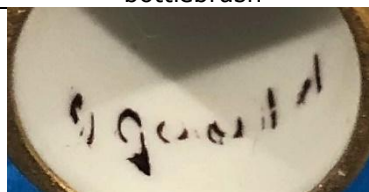
'Gum Blossom'  
lustre finish



**Georgina Gould**  
PORCELAIN



bottlebrush



**Jen Greenklee (Jen G)**

CERAMICS

South Australia

Jen creates her own thimbles and handpaints them



cottage



Gum blossom  
'Australia'



owl



ladybirds - two versions



Kloe the koala



blue daisies



Pengo



Yellow daisies



\Pinklet





**J Gregory**  
PORCELAIN



crocodile  
1987

**Fay Griffiths**  
PORCELAIN

Eleebana, New South Wales

Fay is a thimble collector herself and an accomplished miniature painter. Some of her apexes are painted gold some have a lustre finish



1992



**BLH**  
CHINA



'World Expo 88 BRISBANE AUSTRALIA APRIL-OCTOBER 1988'

**Althea Hammer**

PORCELAIN

Nambucca Heads, New South Wales

I inadvertently named this painter as Althea Hammich in *Thimbles of Australia*



Geraldton wax  
yellow painted apex  
1992



**C Harris**

PORCELAIN



**Lorna Haustorfer**

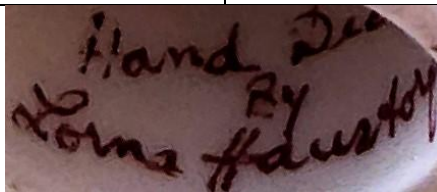
PORCELAIN



1981



rosella  
1998



**B Haysman**  
**PORCELAIN**  
 South Australia



**Hazel**  
**PORCELAIN**



**B Hermel**  
**PORCELAIN**  
 South Australia

Hermel paint flowers. The names of the flowers are lettered in gold along the front rims. The apex and signature is gold painted. The sets of Australian state flowers must have been painted at different times – as shape of thimble changes  
 1980s





'Kangaroo Paw WA'



'Desert Rose'



'Christmas Bell'



**Roma Holland (RH)**  
PORCELAIN



'Christmas Bells Australia'  
pink porcelain



'Kookaburra Australia'  
1987



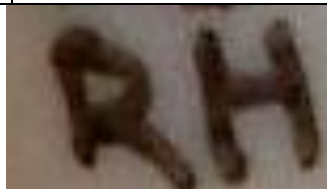
parrot  
b&w photo



'Australia 1986'  
RH etched into inside edge as well



'White winged fairy wren Australia'  
1987  
unsigned

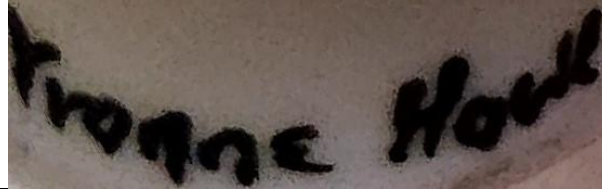


initials slope slightly backwards

**Yvonne Howe**  
PORCELAIN



koala  
1986



**Pam Howson**  
PORCELAIN

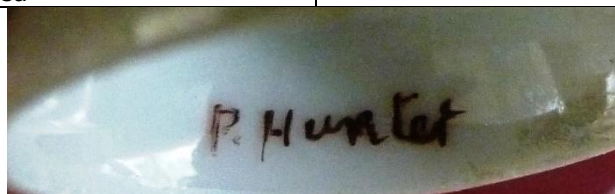


'Cartmill'

**P Hunter**  
CHINA  
Tanunda, South Australia



'Tanunda'  
'96 Barossa



**Impress Ceramics**

CERAMIC

Cowes, Phillip Island, Victoria

The Townsend family migrated from Wales to Phillip Island in 1987.

The painter is not named. Thimbles are handpainted in 22ct gold into the figures in relief. Their thimble boxes were marked 'Australia's Golden Heritage Collection'.

They closed in 1988.



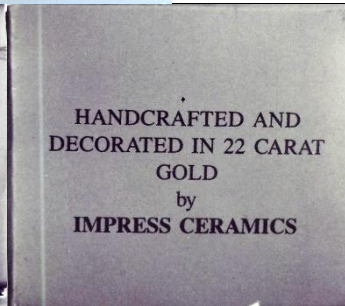
'Giant worm'



Penguin



Lyrebird



**Jean**

PORCELAIN



**EDK**

EARTHENWARE

South Australia



paint yourself earthenware kit thimble



**MvK**  
PORCELAIN



'Hawker'  
1990



**G Kedzierska (GK)**

CHINA  
Sydney

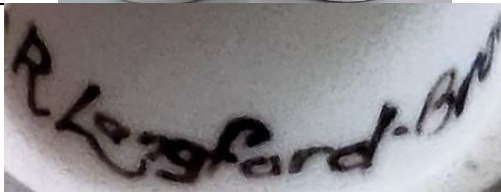
These fine quality thimbles are made by Kedzierska, and the delicate pastel colours enhance the all over floral painting. The apex indentations are highlighted with fine dots of paint



**Robyn Langford-Brown**

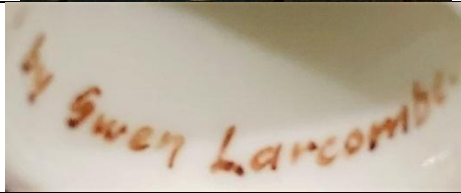
PORCELAIN  
Sydney

Robyn is a member of the Castle Hill Art Society and the Botanical Art Society of Australia





**Gwen Larcombe**  
PORCELAIN



**Maureen Laverty**  
PORCELAIN  
Brisbane

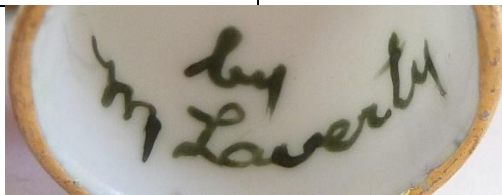
Maureen is a miniature painter. The rim is gold painted at the open edge of the thimble. Maureen also painted Waratahs, gumnuts and gum blossoms



'BANKSIA'



'WATTLE'

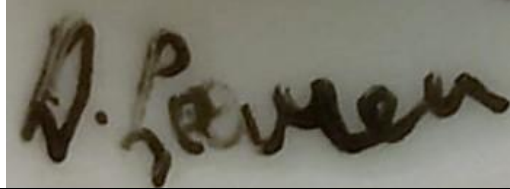


1995

**D Leven**  
 PORCELAIN  
 Sydney



'BOTTLE BRUSH BICENTENNIAL 1988'



**Betty Little**  
 PORCELAIN

signature is painted on the outside



gold-painted apex

**Lorraine Lucey**

FINE BONE CHINA

Mt Lonarch, Victoria

Lorraine Lucey of [Mt Lonarch Gallery](#) handpaints thimbles made by her studio. Signed on the outside



gum blossoms  
 gold-painted apex  
 1998



gumnuts



peaches and grapes  
 gold-painted apex  
 1998



roses  
 pink-painted apex



Lonarch mark 1998

**Pat Lyndon**

PORCELAIN

Manly, Sydney

the rim is gold painted at the open edge of the thimble



waratahs



**Deirdre Marlborough**

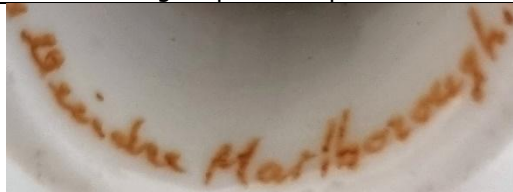
CHINA



'I love a sunburnt country ...'

1986

gold painted apex



**H Martin**

PORCELAIN



bottlebrush



Sturt's desert pea



waratah



wattle

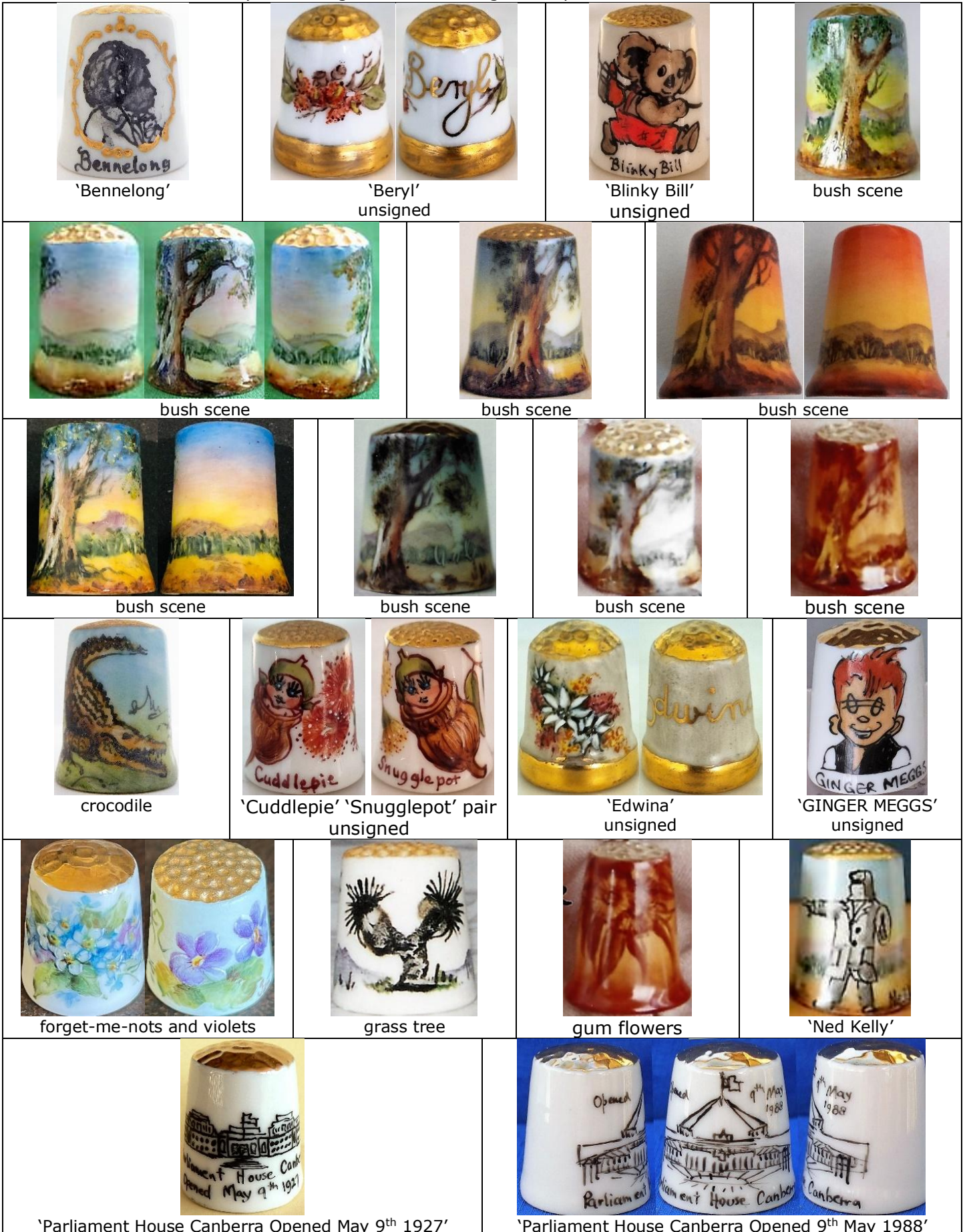


**Jan Milton**

**PORCELAIN**

Rookwood, Adelaide

This talented miniaturist has captured several typically Australian themes or icons on thimbles. Other than her distinctive style, one can usually recognise Jan Milton's thimbles as the apex is painted gold. Jan's country and rural scenes usually include a gum tree with designs handpainted all around the thimble.



Learn more about Australian handpainted thimbles and sewing tools



'SWAGMAN'



'TOMAGO HOUSE'  
Barbara Kelly  
commissioned this thimble  
in 1998



**Mona**  
PORCELAIN



blue wren



**F Mutking**  
PORCELAIN



**L.N.**  
PORCELAIN



gum trees  
blue painted apex



**J Newman**  
PORCELAIN  
W.A.  
blue wash on apex



'KIMBERLEYS W.A'



grey kangaroo  
'KUNUNURRA W.A'



signed on outside

**B Neylon**  
PORCELAIN



1980



**Joan Nock**  
PORCELAIN

Perth

Joan's rims are gold painted at the open edge of the thimble. Her other themes include Sturt Desert Peas and Blue Wren



'Black Boy Tree'



'Bell Flower'



'Geraldton Wax'



'Leschenaultia'

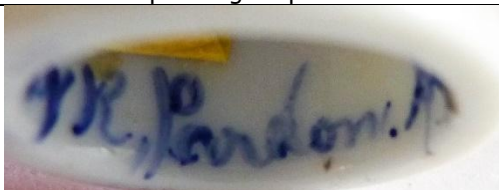


**H Pardon**  
PORCELAIN

Sydney



gumnuts  
apex is gold painted





**Myrtle Parker**

PORCELAIN

Sutherland, New South Wales

Parker's apices are gold-painted. She died in 2020s



**C Pearce**

PORCELAIN



**Perch**

PORCELAIN

Western Australia



**Joy Plos**  
CHINA  
Griffith, NSW

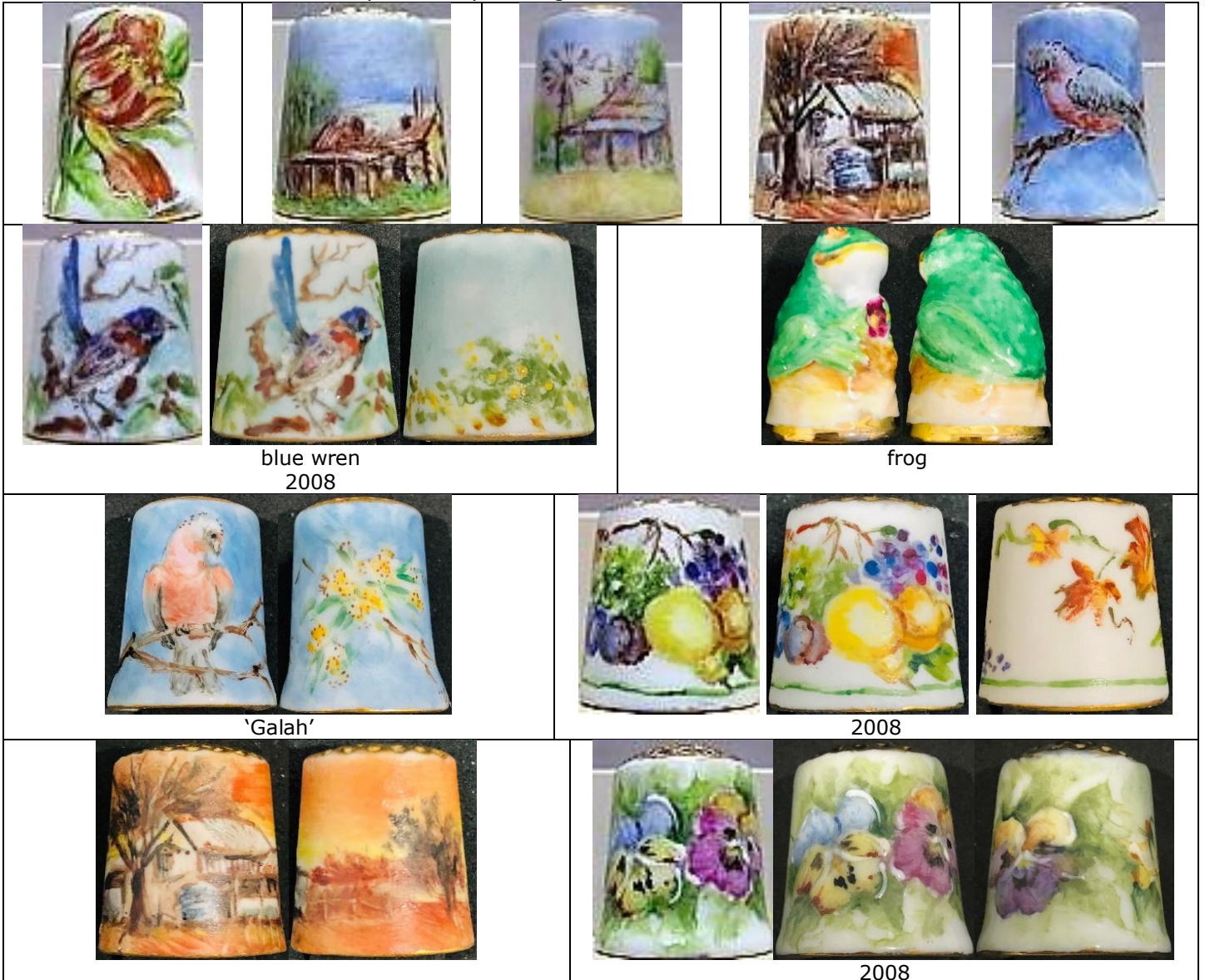


rose



**Roma Prentice**  
CHINA/PORCELAIN  
Rostrevor, Adelaide

Roma teaches china painting. The paintings form scenes all round. The rim is gold painted at the open edge of the thimble. Most of her apexes are painted gold. Roma also undertook thimble commissions



blue wren  
2008

frog

'Galah'

2008

2008



2008



'AUTUMN'  
commission



'SPRING'  
commission



'SUMMER'  
commission



'WINTER'  
commission



2008  
commission



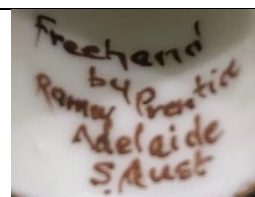
2005



'Joy 40'  
1987  
commission



Rostrevor is a suburb of Adelaide

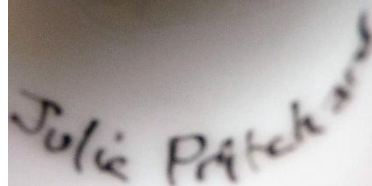


**Julie Pritchard**  
PORCELAIN  
Western Australia



1984

similar farmhouse painted in black



**H Pursche**  
PORCELAIN

Barossa, South Australia



1988



1988

**M.R.**  
PORCELAIN



grass tree



## Lynn Richards

### PORCELAIN

Coomera, Queensland

Lynn Richards was born in Hobart, Tasmania, and she moved to New South Wales in 1965 where she commenced porcelain art lessons in 1979. She has had no formal training in art. Unhappy with the limited shapes of porcelain to paint, Richards started making her own porcelain. After producing and selling small quantities of porcelain bisque she began experimenting with making her own moulds, concentrating on small items. She sold these blanks to other porcelain artists. A love of detailed miniatures was emerging, and Lynn turned her hand to thimbles. In 1983 she moved to Queensland. From 1990 onwards she stopped supplying blanks to other artists. Meeting Lynn Richards as Thimbleselect at a Collectables fair in Ipswich in 1994 led to Thimbleselect becoming a supplier/outlet to the collectables market for Lynn. This stimulated Lynn to extend her range to include matching sewing tools to complement her range of delicate thimble range. The thimbles are embellished with 24 carat gold paint, including some of her apexes, with some of the rims gold painted at the open edge of the thimble





teddy



teddy with flag  
b&w photo



waratah  
b&w photo



pine cones  
1991



ballet shoe pincushion



pincushion



pincushion with pintray



sewing kit with tape measure and  
thimble



egg thimble holder



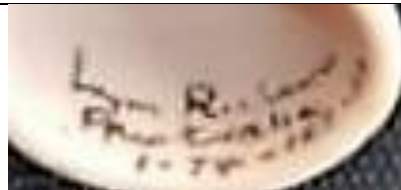
egg thimble holder



egg thimble holder



shoe thimble holder



numbering was a stock number

**Illa Roseworld**  
PORCELAIN  
Cleveland, Brisbane



geraniums  
b&w photo

**HJS**  
PORCELAIN



kookaburra with gum blossoms  
gold painted apex



## Lee Sanders

CHINA

Adelaide

This talented porcelain artist has used Pan Arts as her distributor and they in turn supplied Lee's thimbles to The Thimble Guild in Scotland over many years. Lee battled to acquire good quality porcelain blanks so turned to using Taiwan blanks. Her work is so fine that she can replicate her designs along the rim: there is as much detail in those rims as the rest of the thimbles. Lee often has a contrasting subject painted on the reverse. Most of her thimbles have handpainted gold apices. The rim is gold painted at the open edge of the thimble. © lettered in many thimbles. Some have a lustre finish.

Early examples dated 1989 have emerged – handpainted on the smaller porcelain blanks favoured by china painting groups around Australia (the only type available for painting at that time). These were all stock items built up over the years

Lee Sanders died in March 2023

 <p>berries TTG February 2005</p>	 <p>blue wren 2000</p>
 <p>butterflies TTG July 2004</p>	 <p>Christmas bells</p>
 <p>cornflowers 2004</p>	 <p>'CYMBIDIUM ORCHID' 2010</p>
 <p>daffodils</p>	 <p>fish 2004</p>
 <p>fuchsia 2003</p>	 <p>'Hibiscus' 2014</p>





homestead



homestead



homestead  
2003



homestead  
2012



homestead



'HONEY'  
2011



'Kadina SA'  
roses  
b&w photo



Lily of the valley with blossoms  
TTG February 2003



lorikeet  
2008



nasturtiums



orchid  
2010  
TTG April 2010



orchid  
2011



orchid  
2011



orchid  
2008



orchid  
2014



'OWL'  
2010



owl



panda



parrot



pansies  
TTG March 2003



poppies & cornflowers  
TTG August 2006



'ROBIN'  
2010



roses



roses  
1989



roses



roses



roses



2004



roses



roses  
1989



roses with robin  
TTG June 2004



roses with blue stripes  
TTG November 2004 - 2008



'ROSELLA'  
2010



Sturts desert pea  
2010



Sturts desert pea  
TTG June 2005



Sturts desert pea  
2008



thatched cottage  
2010



thatched cottage  
2010



thatched cottage  
2010



violets  
2003



violets  
2014



1989



1989



1991



1995



2009



2009



2009



2010



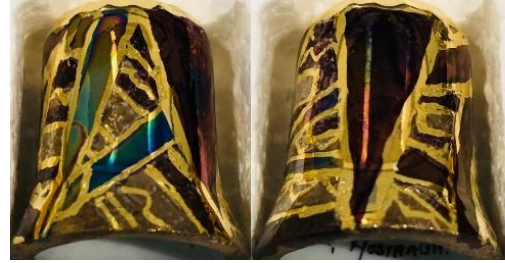
2010



2010



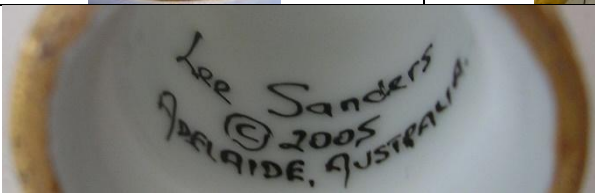
2010



2010



2012



shortened signature



**E Saunders**

PORCELAIN

Sydney

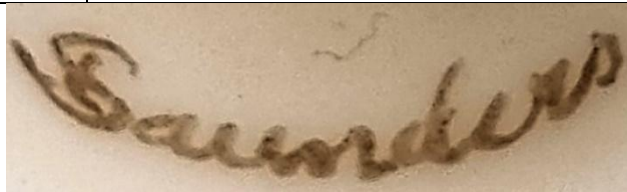
signature on either the outside or inside



gum blossom



1998



**Viv Schipp**

PORCELAIN



1990

**M P Seaforth**

POTTERY



'KA-6'  
'Australia II 1983'



**L R Sherwood**

PORCELAIN

Perth



1988  
lustre finish



**M P Southwell**

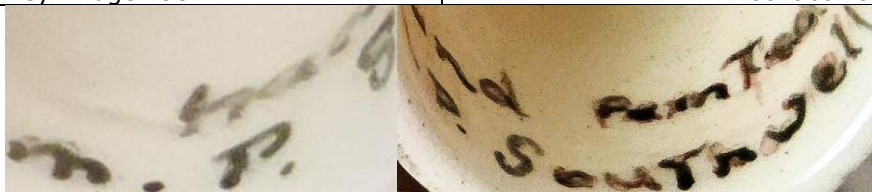
PORCELAIN



'Sydney Bridge 1932'



'Kookaburra'



**Margaret Towler**

PORCELAIN

Bluff Point, New South Wales

Margaret Towler is a well-known porcelain artist and respected teacher of porcelain art at [Studio Towler Porcelain](#). She is a graduate of the Teaching Institute of Porcelain Art NSW and a member of the Australian Porcelain Decorators Association. Thimbles are a small part of Margaret's handpainted work.

The porcelain bisque thimbles are made by her husband, Bill. The thimbles also have raised or incised decorative designs. She began working on thimbles with handpainted lace in the tradition of Irish Dresden thimbles: I haven't seen an example to date

Her thimbles are supplied with an explanatory card. Margaret supplied *Pan Arts of Sydney*



1992  
bird with nest on verso

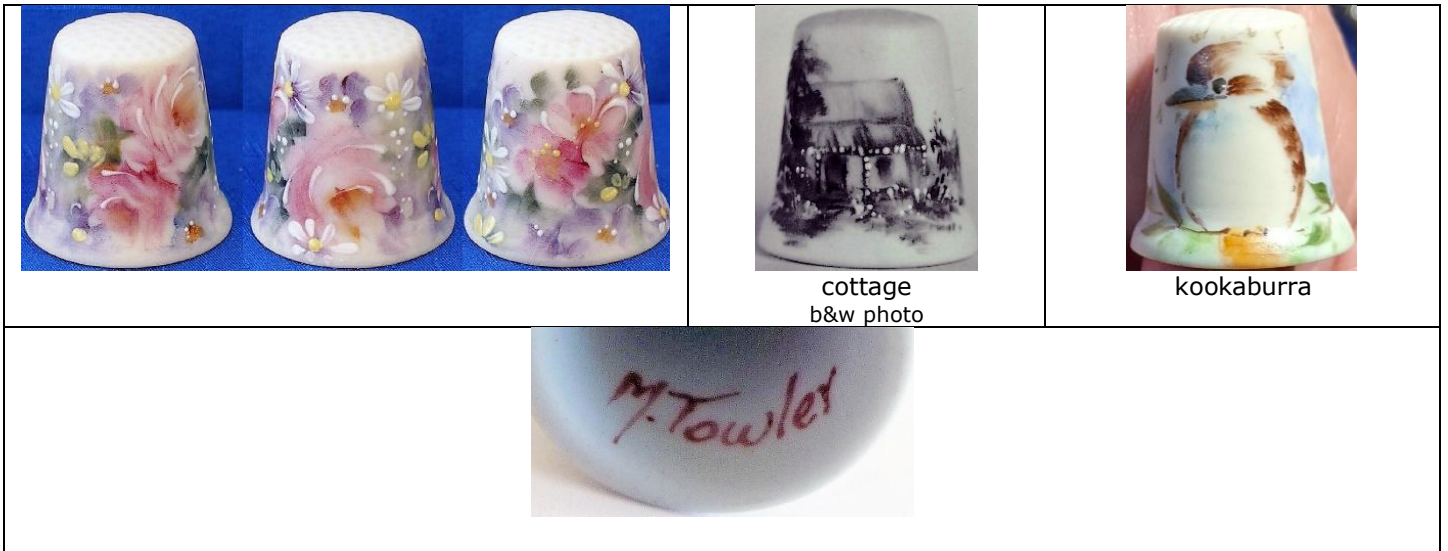


b&w photo



wattle





**John Trier**  
CATTLE HORN

Tamrookum, Queensland

John Trier was born in 1932 in England and in 1948 he came to Australia with his family. Having worked with cattle and sheep all his adult life, he started working with cattle horn in 1977. John is a self-taught artist. In 1979 Joyce Nixon-Smith, a Brisbane thimble collector, asked John if he would make thimbles. In 1980 he added scrimshaw of Australian animals. The thimbles had a small sticky label inside. John's trading name is Tamrookum Valley Craft. Unsigned





**Sylvia Tupper**

PORCELAIN

Rosanna, Melbourne

Sylvia Tupper was commissioned by Beryl Warne of *Thimble Collections* Toorak, Melbourne, to handpaint thimbles with roses and forget-me-nots for the opening of her shop in 1983. Tupper's fine handpainting also reveals her expertise with wildflowers. Her thimbles are supplied on a backing card with her details



**Merle Turner**

PORCELAIN

Adelaide

Encouraged by her thimble-collector husband, Jack Turner, Merle produced a range of handpainted thimbles – including a commemorative for the South Australian Digitabulists Society, founded by Jack Merle often used matching colour trims to complement her flower studies – and following a Royal Worcester thimble tradition, she painted sprigs on the verso, where appropriate Merle died in 2018





'Kookaburra'



'Magpie'



'Pelican'



'Pine cones'



'Pink heath'

'1836-1986' stamp within map outline of South Australia alongside signature



'S.A.D.S. 1988'



'Sturts Desert Pea'



'Waratah'

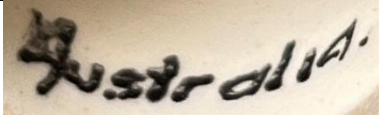


'Xmas 1990'

'S.Australia' lettered alongside signature



additional mark '1836-1986' with outline map of South Australia



1992

**Jan Underwood**  
EARTHENWARE  
South Australia

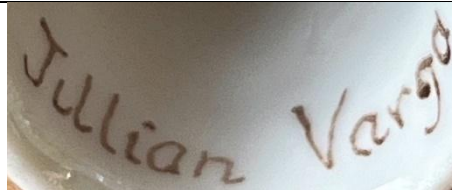


paint yourself earthenware kit thimble

**Jillian Varga**  
PORCELAIN



lustreware



**Christian Vocke & Ahmed Ptak (APCV) / Christian Vocke & Graham Pike (CVGP)**

**EARTHENWARE**

South Australia

Christian Vocke is originally from The Netherlands, and he settled in Australia and together with Ahmed Ptak of Auburn, SA made moulded earthenware. In the 1980s Vocke slip cast ceramic thimbles and then handpainted Australian farmyard, Aboriginal and many varied South Australian scenes with low fluid glaze, in a naive style. The background colours are earthy, concentrating on the ochres, greens and browns, with the drawings in black contrast. They have a gloss finish, and the insides are ochre-coloured. What a range of shapes and sizes Vocke created: maybe he was also assessing what blanks were available.

Vocke was commissioned by Dorothy Andrews to make handpainted souvenir thimbles and these were distributed to various areas in South Australia with the names of the towns on them. Some of their thimbles are marked 'Paris Creek SA'

In 2023 new information was discovered by Kissane. Vocke joined with **Graham Pike**. Their thimble venture has a new signature and the inside is white, not ochre (on examples sighted)

Thimbles with a named place are included at the end



Aboriginal scene  
kangaroo on apex



Aboriginal scene  
signed CVGP  
'ADELAIDE' inside  
kangaroo on apex



Aboriginal scene



Aboriginal scene



Aboriginal scene  
kangaroo on apex



caravan



farm scene

farm scene

farm scene

farm scene



farm scene

farm scene

farm scene



farm scene showing every aspect of the design



farm scene

arm scene  
signed CVAP



farm scene  
signed CVGP



'GALAH'  
signed CVGP  
pale blue apex



kangaroo



mine headgear  
b&w photo



Gouldian finch – cockatoo  
signed CVGP  
pale blue apex



koalas  
signed CVGP  
pink apex



koalas  
signed CVGP  
pink apex



parrot



swan  
signed CVGP

no photo

THE BLUE LAKE



'GLENELG S.A.'



'HMS BUFFALO'



'HUGHES PUMP HOUSE MOONTA'  
R: signed CVGP



'KAPUNDA SA'  
signed CVGP



KINGSTON. S.E. S. AUST.  
signed CVGP



MILAND DUNNY RACES  
signed APCV



'MOONTA'  
miner



'MT GAMBIER S. AUST.'  
signed PTAK



'PARIS CREEK SA'



'PARIS CREEK SA'

no photo

SAILING AT MILANG



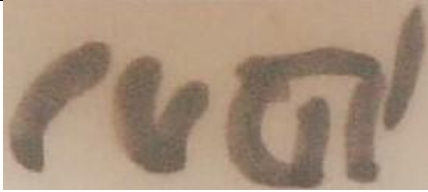
'SEVEN HILLS SA'



'STH. AUS GALAH'  
signed CVGP



APCV on ochre – CVGP on white



TPAK  
only appears on one thimble to date



some have AUSTRALIA lettered as well

**B.W.**  
PORCELAIN  
Western Australia



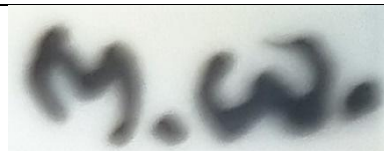
'Blackboy'



**M.W.**  
PORCELAIN



1987





**R.W.**  
PORCELAIN  
Victoria



rose  
'Barwon Park'  
yellow wash on apex



**SW**  
CHINA



Geraldton wax

**Watson**  
PORCELAIN  
Sydney



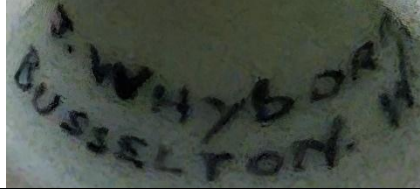
'Koala'



**J Whyborn**  
PORCELAIN  
Busselton WA



grass trees



**Jade Woods**  
PORCELAIN



leaves  
2000

**V Wyatt**  
PORCELAIN  
Western Australia



'Blackboy'



## Handpainted thimbles and sewing tools – unsigned

I am including this batch of unknown Australian painters' thimbles – hoping that your similar thimble is signed – or you recognise the painter. I have added any lettering or my clues that are associated with these thimbles. They may, of course have not been painted in Australia.

 <p>'BROOME'</p>	 <p>'BROOME'</p>	 <p>'CHRISTMAS BELLS AUSTRALIA'</p>	 <p>Christmas bells</p>	
 <p>Christmas bells b&amp;w photo</p>	 <p>Geraldton wax</p>	 <p>grass tree</p>		
 <p>Kangaroo paw</p>	 <p>kookaburra</p>	 <p>lechenaultia 'York WA' blue painted apex</p>		
 <p>lechenaultia blue painted apex</p>			 <p>'Mt Isa'</p>	 <p>lechenaultia from Fremantle WA</p>
 <p>The Old Umbrella Shop Launceston Tasmania</p>		 <p>orchid</p>	 <p>'PERTH W.A.'</p>	



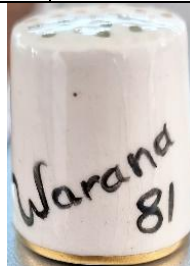
'SPIDER ORCHID PEMBERTON W.A.'



waratah



wallaby



'Warana 81'  
handpainted gold indentations on apex  
this Brisbane festival was first held in 1961. Forerunner of Brisbane Writers' Festival



paint yourself earthenware kit thimble



paint yourself earthenware kit thimbles. see also EDK/WG



paint yourself earthenware kit thimble  
see also: WG



illegible signature - TAS



roses - illegible signature  
possibly Beneslic or Benssic



rims left unpainted - too accomplished to have left unsigned - possibly M Searle Western Australia



lechenaultia  
Perth WA

---

## References

Joy Earles *Thimbles by Jen G TCI Bulletin* winter 2022

Susan Jean Gowan *Thimbles of Australia*. 1998

Nicola Kissane *Thimble maker – Christian Vocke TCI Bulletin* winter 2023

Norma Shattock *Australia's Lee Sanders handpainted thimbles. Needlework Tool Collectors Society of Australia Newsletter* May 2006

Norma Shattock *Australia's Kyneton handpainted china. Needlework Tool Collectors Society of Australia Newsletter* Oct 2006

## Contributors

Wendi Aguiar | Eileen Anderson | Dot Andrews | Irene Barnett | Lesley Bell | Clarice Birch | Yolanta Bogdziewicz  
Pat Brown | Pawel Brzyski | Sue Christensen | Kay Collins | Beryl Crago | Lynn Dennis | Bev Dimmick  
Joy Carlsen Earles | Catriona Ferguson | Ros Forster | Micky Garvey | Anneli Ghilan | Andrea Griffiths | Fay Griffiths  
Margaret Harland | Linda Heggs | Margaret Hickling | Val Hoskin | Barbara Kelly | Nicola Kissane | Doreen Lilley  
Bev McDonald | Wanda McPherson | Diane Poesk | Wendy Ritchie | Sue Roberts | Mabel Rogers | Linda Samaripa  
Jane Sapone | Wolf-Dieter Scholz | Ross Semmens | Norma Shattock | Jean Taylor | Suzanne Thiele | Erin Titmus  
Jack Turner | Jenny White | Sue Wilson | Keith Wiskin | Krystyna Zagajewska

This listing of Australian handpainted thimbles does not purport to be complete or accurate in all aspects.  
Rather it invites comments and contributions to add to our knowledge. My thanks to the contributors.

EMAIL [thimbleselect@bigpond.com](mailto:thimbleselect@bigpond.com) TO SHARE YOUR KNOWLEDGE

© Sue Gowan  
October 2021