

Robert Pringle & Sons (RP) thimbles

This topic continues the theme of thimbles, tho they have a maker's mark, they were never made by this firm, Robert Pringle & Sons.

The mark of RP was registered at three assay offices: London – Chester – Birmingham. As with the topic on Olney, Amsden, this will trace who actually made the thimbles bearing the RP mark. There is no mark of RP&S for Robert Pringle and Sons.



marks sterling silver thimbles

Robert Pringle were wholesale jewellers working at Clerkenwell Road, London. Thimbles exist with the mark of RP from 1891 to 1923. They would have sought the best thimble manufacturers to make thimbles for their business.

The London thimbles were made by **Samuel Foskett** of London as his Registration number RD265923 appears on some of the RP thimbles. There are many recognisable SF patterns used on RP thimbles (see *Learn...Samuel Foskett thimbles*).

The Chester thimbles were made by **Charles Horner**.

There are just a few thimbles with a Birmingham mark. Size marks for **James Fenton** identify the maker of these thimbles but equally they could have been made by **Samuel Foskett** as a few have Foskett type patterning. It is really difficult to know anything different, more than 120 years since these were created!

Looking at the thimbles with a Chester mark, some of the thimbles are more likely to have been made by Foskett. I haven't come across any blackberry thimbles made by Horner but Foskett did.

Charles Horner was the manufacturer of steel-cored sterling silver thimbles, known as Dorcas thimbles. Di Pelham Burn first recognised the mark RP&Co on one of these thimbles. Following on who made these thimbles for Robert Pringle & Co, it is Horner of Halifax.



marks on steel-cored sterling silver thimbles

From the small number of thimbles featured here, you can see that thimbles were not a large part of Pringle's wholesale business.

RP thimbles with Chester assay marks

			
1891 #11	1896 #9	1897 #9	1898 #10
			
1898 #11	1898 #9	1899 #7	1899 #10
			
1900 #7	1900 #7	1900 #11	1900 R ^D 73626
			
1905 #10	1900 #10 tiger's eye apex	1905 #16 Henry Griffith & Sons	1906 #6
			
1906 #8	1906 #.6.	1906 #8	1906 #.6.
			
1907 #8	1907 #10	1907 #10	1907 #11



1908 #10



1909 #6



1909 #8



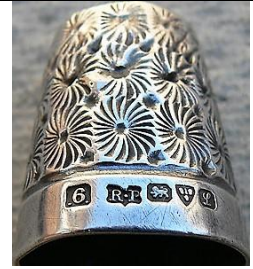
1910 #.6.
Horner is the only maker to use this size marking but the patterning looks like Foskett



1910 #5



1910 #10



1911 #.6.



1911 #7



1911 #7



1911 #9



1911 #9
badly repaired apex



1912 #7



1912 #7



1913 #5



1913 #7



1913 #8



1913



1914 #4



1914 #6



1914 #6



1914 #...



1915 #5

may be made by Foskett as Horner didn't make blackberry designs



1923 #8

RP thimbles with London assay marks



1898 #6



1899 #8



1900 #7



1900 #6



1900 #6



1900 #6
RD265923



1900 #9
inscribed OONAH



1900 #9



1900 #7



1901 #8



1901



1902



1903 #6



1908 #7



1915

RD265923



not assayed
Windsor Castle

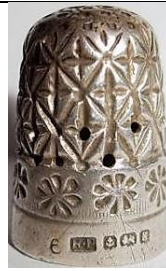
RP thimbles with Birmingham assay marks



1898 #9



1905 #8



1906 #6



1908 #8



1909 #9

RP&Co thimble marks



Daisy #8



Louise #8



Louise #9

RP sewing tools



Crochet hook
Birmingham 1905

References

Di Pelham Burn *Identifying steel-cored thimbles. Supplement.* 1997

Edwin Holmes *Charles Horner and the Chester marks* [Thimble Notes & Queries](#) autumn 1991

Edwin Holmes *Makers' marks found in Chester hallmarked silver thimbles* [Thimble Notes and Queries](#) spring 1992

Contributors

Caroline Meacham-Elegant Arts | Ray Nimmo | Wolf-Dieter Scholz | Barbra Wallace

This listing of Robert Pringle (RP) thimbles does not purport to be complete or accurate in all aspects. Rather it invites comment and contribution to add to our knowledge. My thanks to the contributors.

EMAIL thimbleselect@bigpond.com TO SHARE YOUR KNOWLEDGE

© **Sue Gowan**
October 2023