

British royalty on thimbles

HRH Prince Andrew Duke of York and his family

19 February 1960

HRH Prince Edward Duke of Wessex and his family

10 March 1964

Prince Andrew

Birthdays

21st birthday 19 February 1981



Caverswall

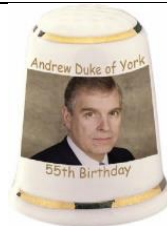
china
self-patterned apex

50th birthday 19 February 2010



china

55th birthday 19 February 2015



china

Engagement

Miss Sarah Ferguson 19 March 1986

 <p>Sutherland china</p>	 <p>Sutherland/Scotland Direct china</p>	 <p>James Swann & Son sterling silver</p>
 <p>Woodsetton Peeps etched brass <u>Royal engagement</u></p>		

Marriage

Miss Sarah Ferguson [aka Fergie] 23 July 1986 Westminster Abbey

 <p>Birchcroft fine bone china</p>	 <p>Tony Bouchet agateware</p>	 <p>Caithness Glass I would like to think this was made for this marriage with the A&S</p>
 <p>Philip Campbell (PDAC) Mull sterling silver</p>	 <p>Caverswall china gold silhouettes</p>	
 <p>Caverswall china monochrome silhouettes</p>	 <p>Crummles Enamels brass & enamel</p>	



Fenton
fine bone china



Finsbury/Fenton
fine bone china



Siegfried Flitsch Pforzheim
silverplate & enamel
limited to 2500 pieces



Kay Thetford Kendall (KE)
sterling silver
commissioned by Thimble Society of
London
L: Andrew as a helicopter pilot R:
Sarah as skier



McMillan & Wife
handpainted pewter



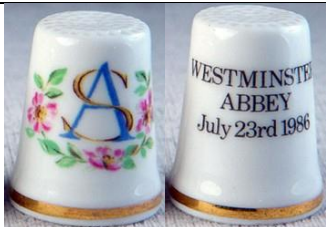
CJ
sterling silver with
Woodsetton Peep



MG Norwich
fine bone china



National Trust of Scotland (NTS)
sterling silver
see also pewter version below



Royal Albert
fine bone china



Royal Crown Derby
fine bone china
pair



Spode
fine bone china



St George
fine bone china



Sutherland
china
floral spray of English rose Irish
shamrock Welsh daffodil Scottish
thistle



Sutherland/Scotland Direct
china



James Swann & Son
sterling silver



James Swann & Son
sterling silver & enamel



James Swann & Son
sterling silver & enamel



Peter Swingle (PS)
handpainted enamel & sterling silver

no photo

Thimble Collectors Socy
fine bone china



Woodsetton Peeps
lacquered brass
available in two colours



Wedgwood
fine bone china
set of six



Woodsetton Peeps
pewter



handpainted china
commissioned by Thimble
Society of London
the bee is Sarah's emblem



fine bone china



22ct gold-plated
Andrew and Sarah 23rd July 1985
pewter Westminster Abbey on apex
photos at R: the Cathedral has been removed



pewter
see also **NTS** as above

Others - Andrew



Caverswall
china



Caverswall
china
The Duke and Duchess
visit to York 4th July 1987



St George
fine bone china



Sutherland
china

Children

Princess Beatrice 8 August 1988



Tony Bouchet
agateware



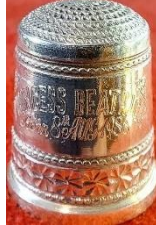
Caverswall
china



Caverswall
china



Sutherland
china
Queen Mother with Princess
Beatrice



James Swann & Son
sterling silver
Princess Beatrice born 8th Aug
1988
commissioned by Thimble
Society of London
limited to 500



Woodsetton Peeps
lacquered brass
Royal Baby 1988



Woodsetton Peeps
lacquered brass
Princess Beatrice born 8th Aug 1988
available in both blue & dark green lacquer
no peeps



Woodsetton Peeps
pewter
Royal Baby 1988
limited to 1988 pieces

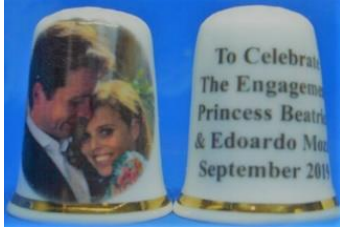
Princess Beatrice 24th birthday 8 August 2012



china

Engagement

Edoardo Mozzi September 2019



Birchcroft
fine bone china



china

Marriage

Edoardo Mozzi 17 July 2020



Birchcroft
fine bone china

H M Queen Elizabeth II & Prince Philip attend wedding of Princess Beatrice 17th Jul 2020



china

Princess Beatrice and Edoardo Mapelli Mozzi tied the knot in a surprise wedding at Windsor on 17th July 2020

Princess Beatrice - Others



china

celebrating her father Prince Andrew's 50th birthday 2010

Princess Eugenie 23 March 1990



Tony Bouchet
agateware



Swann Thimbles (S(T))
EUGENIE 1990
sterling silver
commissioned by Thimble Society of London
this is one of a pair: a matching larger size for
Queen Mother, turning 90



Peter Swingler (PS)
sterling silver & handpainted
enamel



Peter Swingler (PS)
sterling silver & handpainted
enamel
commissioned by Thimble
Society of London



Woodsetton Peeps
lacquered brass

Engagement

Jack Brooksbank 2018



china

Marriage

Jack Brooksbank 12 October 2018



Birchcroft
fine bone china



Birchcroft
fine bone china



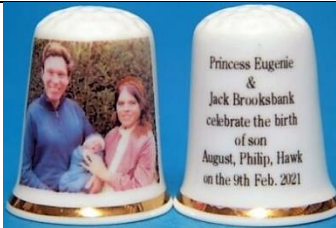
china



china
A loving kiss ...

Children

August Philip Hawk Brooksbank 9 February 2021



china

Eugenie - Others



china
celebrating her father Prince Andrew's 50th birthday 2010

Prince Edward

Birthdays

21st birthday 10 March 1985



St George
fine bone china

Marriage

Miss Sophie Rhys-Jones 19 June 1999 St George's Chapel Windsor



Birchcroft
fine bone china



Birchcroft
fine bone china



Tony Bouchet
agateware



Cottage Thimbles
china



Jasper's Yorkshire
handpainted china
Margaret Palmer
commissioned by Thimble
Society of London



Julie Menzies
china
(L: decal- R: handpainted)



Museum Collections
china



Swann Thimbles (S(T))
sterling silver



china

Others

 <p style="text-align: center;">Caverswall china</p>	 <p style="text-align: center;">Cottage Thimbles china birth of Louise 8 November 2003</p>	 <p style="text-align: center;">Cottage Thimbles china birth of James Mountbatten Windsor 17 December 2007</p>
 <p style="text-align: center;">china birth of James December 2007</p>	 <p style="text-align: center;">china Lady Sarah Chatto 46th birthday 1 May 2010</p>	 <p style="text-align: center;">china <u>50th birthday 10th March [2014]</u></p>
 <p style="text-align: center;">china <u>Prince Edward and Sophie the Earl and Countess of Wessex 2021</u></p>		

the list of CONTRIBUTORS may be found with King Charles

**© Sue Gowan
October 2006**