

Steel-cored thimbles (Dorcas Dreema Doris Dura)

Following the topic on British Registered designs on thimbles, this topic is an attempt to update a well-loved booklet by Diane Pelham Burn entitled Identifying steel-cored thimbles. Published by The Dorset Thimble Society in 1993, with a supplement in 1997, it was the first publication to document the steel-cored thimbles produced from the 1880s. More than 30 years have elapsed since that publication and there have been new finds since then

The thimbles illustrated are in black and white. Where I have found no matching colour photo, I have used those of Pelham Burn's - which weren't of great quality for study purposes
I have followed the descriptions she used.

I have added new thimbles at the end of each section - marked in red, as are any additional information I have added



Diane Pelham Burn
died 2012

INTRODUCTION

In 1884 Charles Horner devised the Dorcas thimble. The idea of using steel to strengthen silver thimbles was not new. Silver thimbles with steel caps which reinforced the top of the thimble and protected the tip of the finger had been available for more than a century, but many needlewomen used the side of the thimble and suffered the piercing of the silver with damage to both the thimble and the finger

His invention was a thimble made of silver-coated steel which gave protection to the entire finger. The Dorcas had an outer silver shell which produced the appearance of the precious metal, a core of hardened steel which gave strength and durability, and an inner lining to prevent the feeling of steel against flesh. When assembled the steel was sandwiched between the silver shells ie in three parts



Clever advertising and astute merchandising enabled the Dorcas to dominate the market despite the challenge of other thimble makers. Presumably these competitors chose two-syllable names beginning with D



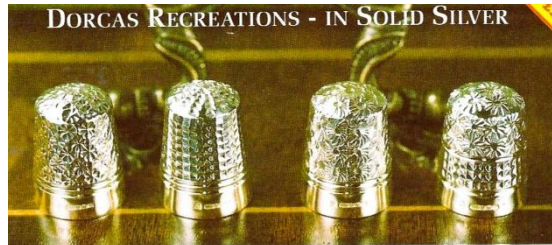
various Dorcas advertisements

All the thimbles featured here attract a magnet

Pelham Burn's topic was steel-CORED thimbles tho she did add the rheumatism thimbles towards the end of her booklet – they only have a band of steel at the rim. Using this as a guide I have included two Australian thimbles which have some part that attract a magnet – Elfin and "AUSSIE"



there was no quality control – how could this 1903 sterling Horner thimble be hallmarked when it attracts a magnet?



The Dorcas thimble was hailed as the greatest improvement since the invention of thimbles! Charles Horner patented the design in 1884 and the thimble was sold with a lifetime guarantee: "free exchange if rendered useless from any cause whatsoever". A Dorcas thimble was described as being three thimbles inside one another. The inner and outer surfaces were made of sterling silver and the middle layer was made of steel. In 1940 the last Dorcas was made. Swann's have recreated four of these original Dorcas designs but this time in solid hallmarked silver. You will find these particular designs illustrated in the Thimble Collector's Encyclopedia. All four are hallmarked with your own Guild hallmark, the usual silversmiths hallmarks and that of the makers S(T) for Swann's. You may acquire this stunning set for just £19.95 each (TC216). Simply send your first instalment now and we will invoice you or debit your credit card for the remaining three. Alternatively you may have all four now for £69.80 (TC217) saving you £10!

these sterling silver thimbles were released by The Thimble Guild with the maker's mark of Swann Thimbles. All are marked DORCAS

Steel Cored Thimble Sizes

Thimble Size	Dorcas	London Dorcas	Dorcoïd	Dreema	Doris	Dura & RP & Co	Steel Clad	ACE	ARG Pat
2	18.5 mm								
3	18.0 mm					17.5 mm			
4	17.5 mm					17.0 mm			
5	16.5-17 mm	17.5 mm				16.5 mm			
6	16.0 mm	17.0 mm	17.0 mm			16.0 mm			
7	15.5 mm	16.0 mm	16.0 mm		14.0 mm	15.5 mm			15.0 mm
8	15.0 mm	15.5 mm				15.0 mm			
9	14.5 mm	15.0 mm			14.5 mm	14.5 mm		14.0 mm	16.0 mm
10	14.0 mm	14.5 mm			15.0 mm	14.0 mm			
11	13.5 mm				15.5 mm	13.0 mm		15.5 mm	
12	13.0 mm				16.0 mm			16.0 mm	
13	12.5 mm			14.5 mm					
14	12.0 mm			15.0 mm			14.5 mm	17.0 mm	
15	11.5 mm			15.5 mm			15.0 mm		
16				16.0 mm			16.0 mm		
17				16.25 mm			16.5 mm		
18				16.5 mm			17.0 mm		
19				17.0 mm					



Ray Nimmo
2001

created in memory of my thimble friend Ray Nimmo who contributed significantly to 52 thimble topics. I miss you Ray

see also
Australia's Elfin thimbles
Charles Horner's early Dorcas PAT. thimbles
Dorcas thimble boxes
Who made these thimbles AUSSIE COROZO INVICTA?

CHARLES HORNER

DORCAS thimbles

The history of the Dorcas thimbles is documented by the patents issued to Horner. His original Patent (8954) he received in 1884 produced the first thimbles. These were called Improved Dorcas, which was stamped on the thimble boxes but not on the thimbles. At this time the word PAT. with a steel core. These early thimbles were marked PAT on the rim, an abbreviation of the patent. There was an Rd. number for those designs which he had had registered and usually a number indicating the size. The largest thimble was a 1, the smallest a 15. Size 12 was known as a maid's thimble whilst sizes 13-15 were small enough to fit children. Horner also made some huge thimbles, said to be for arthritic or bandaged fingers. These had no size number. The size was also omitted on some thimbles where the word PATENT was spelled out. There were no trademark or maker's initials on these rather tall, round-topped early Dorcas thimbles

In 1905 Horner was granted a new patent for a different method of construction. Instead of drawing out each silver and steel piece separately and then assembling them, the new process bonded the silver to both sides of the steel, enabling the thimble to be made in one piece. At this time the word PAT. Was replaced by DORCAS and the initial CD and the Rd, numbers were omitted. The whole design was simplified by reducing the number of designs used, Somewhat later the basic shape was altered by making them shorter with flattened tops

Manufacture of the Dorcas thimble was discontinued about 1948, but the thimbles have endured and many are still being used today



Dorcas window – St Andrews Church Newcastle NSW 1959

DORCAS thimbles marked PAT.



I have interspersed the numbering used in the supplement (1997) with those in the original booklet

to date **54** different PAT. designs have been recorded

1 Daisy
curved petals on flowers – dot centre



1a large Daisy
fewer petals – circle centres



1b Daisy
shorter petals – large dot centres



1c daisy with finely engraved leaves around rim



2 Diamond
grid with faceted centres



3 Flora
daisy sides and top – diamond pattern band



4 Louise
interlocking asterisks



4a small Louise



4b interlocking Louise



5 Persian
six-point star-shaped – indentations closely spaced – tiered top



6 Plain
octagonal indentations



6a Plain tiny, raised flowers above rim



6b Plain marked SILLVR



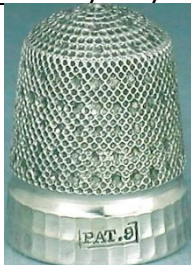
7 Princess May
flowers with straight petals – dot centres



8 Shell
pattern of fan shapes



9 Star
star-shaped depressions surrounded by tiny dots – two rows of facets on band



9a Star
with two rows on two-tiered band



9b Star
with daisy top



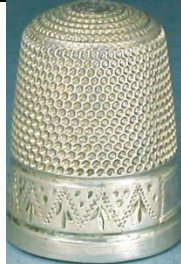
10 Engraved bands

All have cartouches and fine octagonal indentations on the sides and top
It is often difficult to match Pelham burn's descriptions with thimbles

10a scallops with alternating clusters of dots and vertical slashes



10b tiny dot triangles with slash/dot trios



10c five-petalled flowers and foliage



10d long dotted ovals around horizontal fern leaves



10e small interlocking triangles of arrow-shaped slashes



10f horizontal ivy leaves



10g dot swags with large fans-shaped slashes



10h simple scrolls



10i rococo scrolls



10j dot ovals around two different flowers – circle of dots around centres – five slash petals



10k alternating diagonal fern leaves



10l horizontal heart-shaped leaves



10m large flowers alternating with circular dots and five slash petals



10n dot ovals small horizontal five slash leaves



10o ovals of joined zigzags enclosing "x" crosses with four clustered dots



10p alternating horizontal wheat heads and flowers



10q wavy line slender foliage and clusters of dots



b&w photo

10r double zigzags crossing thin "x" over thicker cross in each diamond



10s rectangular boxes each enclosing simple slash – shape of x or cross



b&w photo

10t over and under narrow bands enclosing vertically striped ellipses



10u dotted diamonds with engraved triangles



10v inverted scallops alternating three dots/slashes



10w xxs and dots inside curvy box



b&w photo

10x up and down dot triangles



b&w photo

10y diamond small scrolls



b&w photo

10z Greek key pattern



top outer sterling silver layer has been removed because of damage

10aa Tudor rose



10bb sycamore leaves



10cc crosses over circles



10dd solid leaves



10ee horizontal flowers with dots over striations



10ff wavy leaf lines with narrow diagonal pattern



10gg tear drop shapes with three leaf



10hh berries with small leaves



10ii vertical arrows under swag lines



10jj alternating wider fans



DORCAS thimbles marked PATENT

1 flowers leaves berries



2 Star pattern

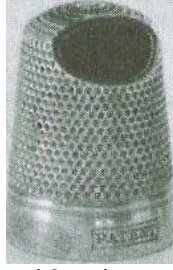


3 foliage and flowers
stylised shapes interwoven with scrolling



b&w photo

4 partial open cup
for longer fingernails



b&w photo

1a five-petalled flowers and foliage



1b leaves



1c feathery horizontal leaves



5 Plain



6 Daisy



7 Flora



8 Louise



9 non-repeating pattern of interwoven shapes



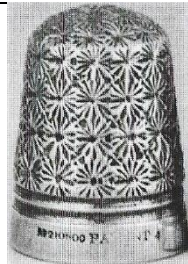
10 Diamond



11 Persian



12 Princess May



Unmarked thimbles

1. tailor's thimble



b&w photo

DORCAS CH thimbles



to date there are **20** different designs, down from 54 PAT. designs

1 Daisy



1a large Daisy



2 Diamond



2a Diamond large daisy band



3 Flora



3a Flora with wide plain band



b&w photo

4 Louise



4a Louise with large daisy band



b&w photo

5 Plain



6 Plain with decorated bands

6a large daisies in a single row



b&w photo

6b engraved flowers



6b1 engraved flowers narrow band



6c engraved scrolls



6d engraved ivy leaves



b&w photo

6e inverted stylised fans



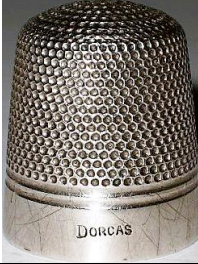
7 Shell



8 Princess May



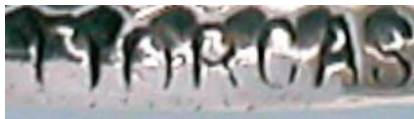
9 Plain - no other lettering except DORCAS



10. Dorcas with stone top



11 Plain - indentations right to rim with Dorcas at rim

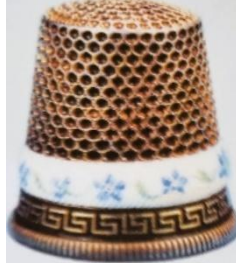


DORCAS made in the United States

Horner applied for and received a United States patent in 1889; In about 1910 a Dorcas thimble was produced in America. These thimbles are marked 'DORCAS, the size number and PAT. June 11 '89' inside the top. There are no external marks to distinguish them from ordinary thimbles
The US patent number is 404910



1 Greek key with enamel band



2 horizontal 'S' scrolls with enamel band



2a. horizontal 'S' scrolls



3. Greek key with turquoise stones around rim



DORCAS gold

These thimbles are inscribed 9ct. GOLD STEEL LINED in addition to the CH mark and DORCAS and the size number



1 Daisy



b&w photo

2 Plain



3 Shell



b&w photo

4 Diamond



5 Flora



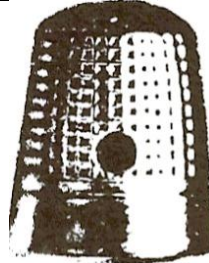
DORCAS with 4mm. hole in one side

No explanation has been found for these thimbles, each of which has an identical machine-made hole halfway down the side of the thimble opposite the DORCAS and CH marks. All of those noted are a size 7

1 Daisy



2a Diamond



b&w photo

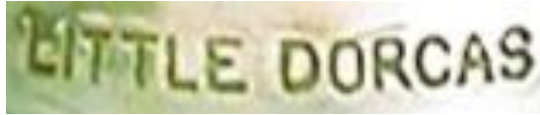
2b Diamond with brass-coloured top



3 Plain



LITTLE DORCAS



This line was initiated as a less expensive version of the IMPROVED DORCAS. They weighed less but Horner claimed that this did not affect its durability

1. Louise, plain band



2. Diamond, plain band



3. Plain, Louise band



4. Plain, diamond band



5. Plain, daisy band



6. Daisy, plain band



DORCAS JUNIOR



The DORCAS JUNIOR thimbles were another of Horner's efforts to appeal to the lower end of the market:
lighter and shorter

1. Plain



2. Daisy



3. Daisy with diamond band ie Flora



4. Louise



5. Diamond



LONDON DORCAS

This was probably another variant of the IMPROVED DORCAS. Evidently the venture was not a success and was soon abandoned because very few were made and they are now extremely rare



1. Plain



2. Plain, unusual diamond band



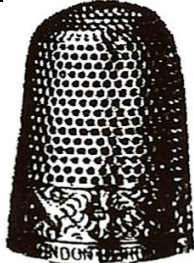
2a Plain, unusual diamond narrow band



3. large asterisks



4 band pattern of diamonds with indented centres



b&w photo

5 Daisy



6 mixed pattern of Louise with circles in between



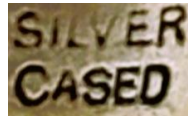
7 stipple



8 plain with band of squared diamonds with diagonal lines



SILVER CASED



1. Plain



2. Daisy



3 Diamond



b&w photo

THE "DORCOID"

It is uncertain whether these thimbles represent a further diversification of the Dorcas line by an unidentified competitor to share in Charles Horner's Dorcas success, The former is probably the case Each of the thimbles has a dark coating inside which is possibly a celluloid compound. The contrived word 'Dorcoid' looks like a coupling of the first half of Dorcas with the end of a word like celluloid which suggests that this is a Horner production. Evidentially it was not a commercial success, and examples are very rare indeed

Could this have been made by Charles Iles and not Horner? It's the use of 'THE' that Iles used on many of his thimbles



1. Daisy



2. Plain



CH marked thimbles

The only marks this batch of Horner thimbles are CH and size number. The 20mm diameter thimbles don't have a size - probably made for use by sewers with badly swollen fingers
There are no DORCAS thimbles here - rather they are made of nickel silver, silver plated, chrome plated, copper plated, and a metal known as Staybright (a proprietary material)

1. Daisy



copper-lined



nickel-plated with rolled rim large for arthritic finger



nickel-plated daisies in vertical rows



Staybright

2. Flora



silver-plated



Staybright

3. Louise



chrome-plated



copper-plated lined with silver



Staybright

4. Persian lace



stone top

5. Plain



copper-plated



copper-plated with rolled rim



copper-plated rolled rim large for arthritic finger 20mm



nickel-plated rolled rim large for arthritic finger 20mm



silver-plated

CHARLES ILES

DORIS



1. Plain



2. Daisy



3. Daisy with grid band ie Flora



4. grid (Diamond)



4a. irregular grid (diamond)
allowing for distortions caused by wear, the pattern is less symmetrical than 4



5. large shell



b&w photo

6. vertical rows of daisies alternating panels of indented diamonds, daisy top



b&w photo

7. Star



8 rows of large circles

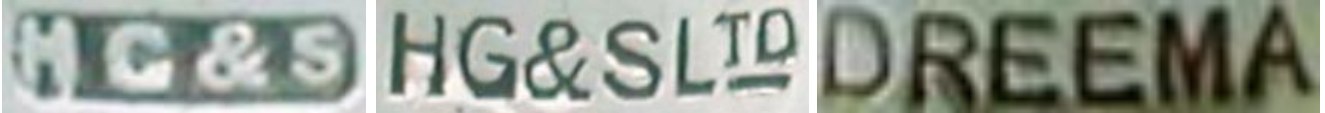


HENRY GRIFFITH & SONS

DREEMA

There is significant variation in the way the patterns were placed on the thimbles. In some cases, there is a single line between the pattern and the rim, in others there is a double line, and some designs were made both ways. The amount of space allocated to the rim is also inconsistent. It is not possible to illustrate all of these variations, although they make a considerable difference to the appearance of the thimbles

The sizing of Dreema thimbles is different from the Horner sizing. The larger the number indicates a larger size. Sizes appear from 10 to 24



1. Plain



2. daisy pattern with dot centres – sides and top

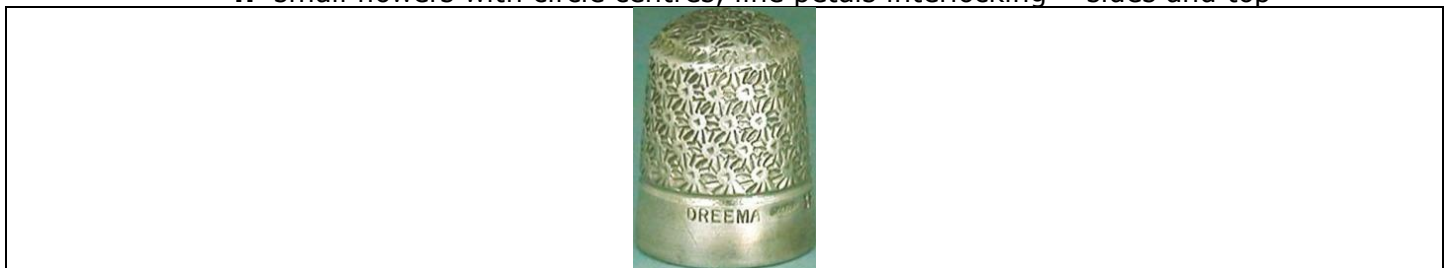


3. daisy pattern simplified – sides and top



b&w photo

4. small flowers with circle centres, line petals interlocking – sides and top



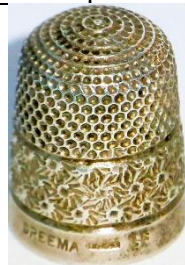
5. flower heads in horizontal rows with horizontal row of dots – top flower heads



5a. simplified flower heads in horizontal rows with horizontal row of dots – top flower heads



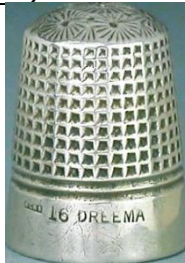
6 plain – sides and top - band rows daisies



7 plain – sides and top – band small flowers with circle centres



8 grid (diamond) sides – top daisy pattern



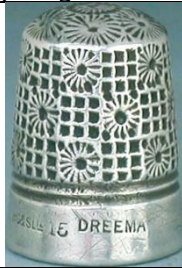
9 grid (diamond) sides – band single daisies – top daisy pattern



10 alternating diamonds of grid outlined and single daisies – sides – top daisy pattern



11 alternating squares (no outlines) of grid and single daisies – top daisy pattern



12 asterisks (Louise) – sides and top



13 plain – sides and top – band two rows interlocking asterisks



13a. 4mm band one and a half rows interlocking asterisks



b&w photo

13b. 8mm band three rows interlocking asterisks



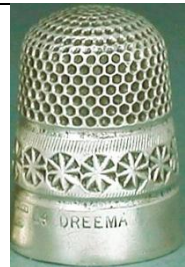
14 plain – sides and tops – band of two rows of encircled asterisks



15 encircled asterisks – sides and tops



16 plain – sides and top – band of one row of encircled asterisks on fine diagonal lines



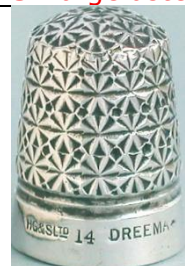
17 band of alternating diamonds and single daisies



18. plain – stone apex



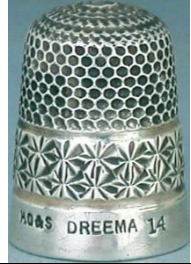
19. large asterisks



20 Five rows diamond band



21 Louise band



STEEL-CLAD

Although made by Henry Griffith and Sons, only the name STEEL-CLAD and JWLtd for James Walker Limited are on the rim



1. Plain



2. large asterisks



3. plain, asterisk band ie Louise



WALKER AND HALL

DURA



The DURA was made by Walker and Hall. Their trademark of W&H enclosed by a pennant, the name DURA, the size number and the word PAT, with a letter within a circle appear on the rim. The letters R, D, M, and G.

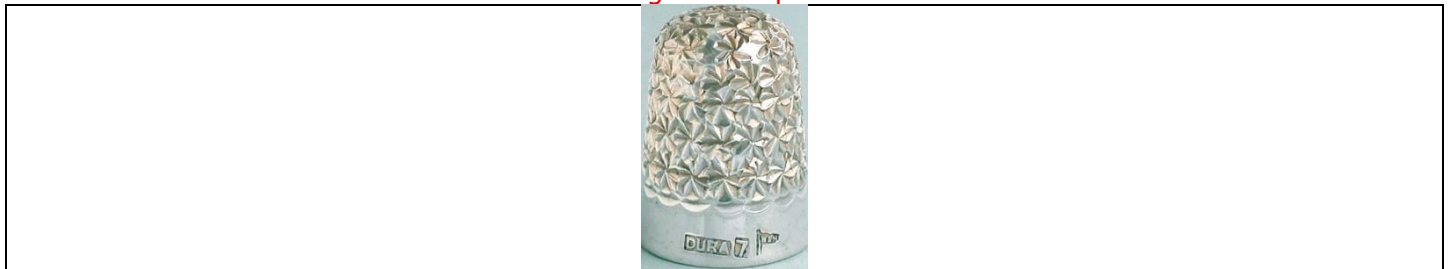
1. Daisy



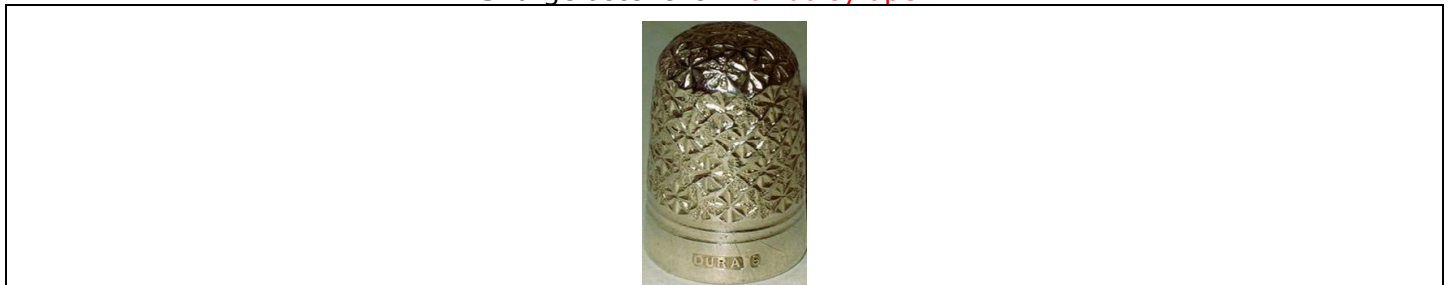
2. Louise



2a Louise with single scalloped line above band



3 large asterisks with daisy apex



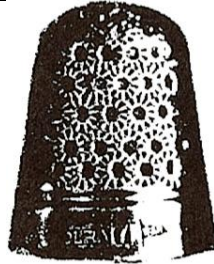
3a. large asterisks with double scalloped line above band



3b encircled asterisks with double scalloped line above band



4 rows of deep circles surrounded by fan-shaped petals



b&w photo

4a. rows of deep circles surrounded by fan-shaped petals with double scalloped line above band



5 rows of triangles making a zigzag pattern



6 faceted small diamonds on textured surface



7 star-shaped indentations on textured ground



8. plain with double scalloped line above band



9 asterisks with dotted diamond shapes with daisy top



10 asterisks with dotted diamond shapes on textured surface



11 Princess May



Robert Pringle & Co

MATT



1. plain, octagonal indentations



2. Flora



3. asterisk within a circle



R P & Co



1. rows of triangles making a zigzag pattern



8 asterisks all over



9 Daisy



SIDNEY & Co



There are two different marks for these thimbles – one of which also includes the name DURA

1. Louise



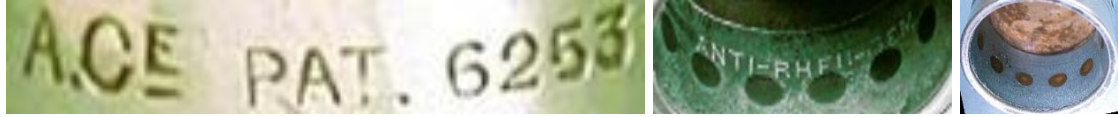
ARTHRITIS THIMBLES

Steel-cored thimbles were made for sufferers of arthritis. These thimbles have an inner band with small circles of copper let into it. (Copper was thought to alleviate the symptoms of arthritis). Only large sizes appear to have been made

Alfred Constantine (A. C^E)

These thimbles are marked on the rim A. C^E and PAT 6253 (1909) for a fingerguard with lining comprising galvanic and magnetic elements let into it. A United States patent was also granted/ It is not known whether Constantine formed his company to produce this thimble, or used the service of another manufacturer

ANTI-RHEUM is lettered on the inside rim, just above the holes

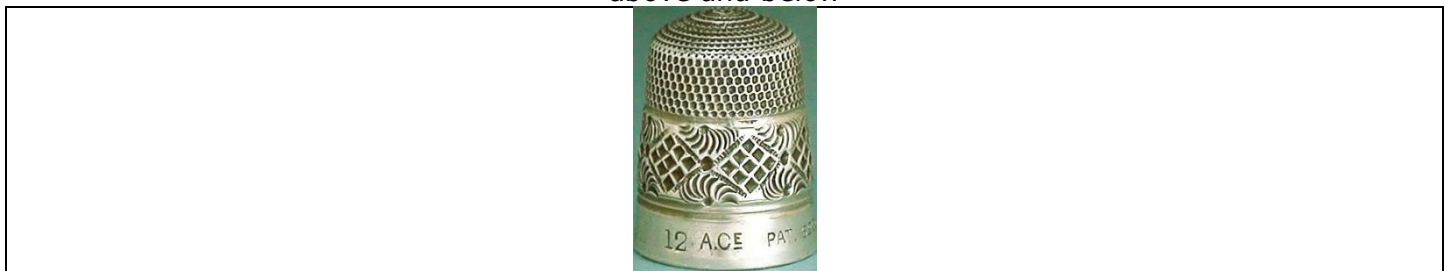


advertisement: 1909

1. plain (fine indentations)



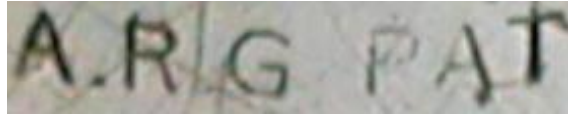
2. plain (fine indentations) with wide band of alternating diamonds enclosing grid pattern with half daisies above and below



3 large grid pattern (Diamond)



A.R.G. PAT



The abbreviation PAT appears with the trademark A.R.G. on the rim, but no patent number follows. Nothing is known about this maker. **The shape and patterns are those of Henry Griffith & Sons**

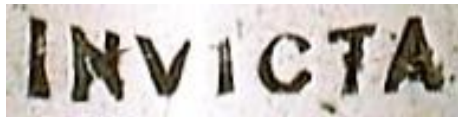
1. alternating diamonds of grid and daisy. Daisy top



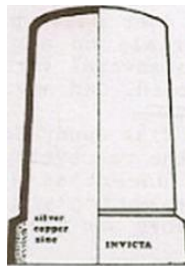
2. daisy sides and top grid band



INVICTA



Marked SILVER on band. Inner band of copper and steel



1. plain (fine indentations)



2. plain (fine indentations) with daisy band



3. daisy



"AUSSIE"

A firm favourite featured in *Thimbles of Australia* is the "AUSSIE". It is the rarest of the Australian sterling silver thimbles, with only eight known examples in existence.

This thimble reveals its make-up on the verso: S^T SIL S L which is interpreted as Sterling Silver Steel Lined



ELFIN

Having covered this Australian-made thimble in depth in *Thimbles of Australia* it was only in 2014 that we tested Elfin thimbles with a magnet and discovered that they attracted a magnet – but it was only the apex and not the sides.




The only markings are ELFIN and STG.SIL with a size number



In this advert below by Roy A Humphery, of Sydney, it mentions 'with steel reinforced ends'. I have found that the magnet is not attracted the end of Elfin thimbles

ROY A. HUMPHERY
Wholesale Jeweller and Importer
92 PITT STREET, SYDNEY

FOR IMMEDIATE
DELIVERY
ASSORTED
SIZES



ONCE MORE
AVAILABLE
AFTER A LONG
ABSENCE

STERLING SILVER THIMBLES
WITH STEEL REINFORCED ENDS

'Phone: BW8429 ——— Your Orders

July 10, 1947.THE COMMONWEALTH JEWELLER AND WATCHMAKER.Page Ninety-three

References

- Diane Pelham Burn *Another fabulous Dorcas find. At your fingertips* May 2007
Diane Pelham Burn *Identifying steel-cored thimbles. 1993 Supplement 1997 + At your fingertips* Jan 1994
Tom Lawson *Charles Horner of Halifax: a celebration of his life & work.* 2002
Paula Moore *Dorcas thimbles.*
Dan Walbrun *American Dorcas thimbles. TCI Bulletin* winter 2004

Contributors

Lee Bateman | Joanna Blackie-Sew Many Bits | Pawel Brzyski | David Cooper | Nancye Crooks | Margaret Hendriksen
Julie Hollick | Jaylene Hopkins | Carolyn Meacham-Elegant Arts | William Isbister | Wynneth Mullins | Ray Nimmo
Wolf-Dieter Scholz | Svetlana

This listing of Steel-cored thimbles does not purport to be complete or accurate in all aspects.
Rather it invites comments and contributions to add to our knowledge. My thanks to the contributors.

EMAIL thimbleselect@bigpond.com TO SHARE YOUR KNOWLEDGE

© **Sue Gowan**
March 2026