

Interesting lettering and symbols on thimbles

including thimbles of thimble clubs, collectors and societies etc

as well as thimbles with cryptic pictorial messages

Are you fascinated by various lettering – not the hallmarks nor the maker's marks – but something more specific - on your thimbles? Sometimes it is lettering of a commemorative or an historic event, others just inscribed with some unusual words or symbols. None of the following thimbles fall into any previous *Learn More About...Thimbles* topics: not advertisements, slogans, scenic, placenames, patents, brands etc.

Some of the lettering is on an applied badge – probably done at the time of the commission?

It is as broad as thimble collecting but the occasion for the lettering or words or symbols is largely unknown: all eras (but largely ignoring contemporary thimbles), all countries and different materials are included, concentrating on the unusual. Who made some of the thimbles – for which occasion, tho some are self-explanatory – were they one-offs or made for commercial purposes? If they are of sterling, we usually know the maker.

I will remove the thimble if it becomes part of a new topic.

Quite a few have military connections, many from World War I. I have found a few examples of war propaganda thimbles, and I have included them here, having no other place for them.

You will notice a preponderance of thimbles for various [thimble clubs](#) or [thimble collecting](#), [sewing](#) etc – they just need to be recorded.

I don't believe these are jeweller's inscriptions or monograms added after manufacture, in a cartouche.

I first encountered many of these thimbles in the *Thimble Society of London* catalogues. Most are rare and very few examples have been encountered: so well worth recording for posterity? I have combed Gay Ann Rogers, Edwin Holmes and John von Hoelle's thimble books for any clues. Those books date from the 1980s and our knowledge has moved on.

I would love for this topic to become a repository of oddities, mystery thimbles – the more cryptic the lettering, the better.

Some are included here just to record them as they are rare. They are made of sterling silver, gold, brass, steel, copper and aluminium, even a few china and plastic.

In 2022 I added a section at the end: thimbles from 18th and 19th century that have pictorial or 'cryptic' messages around the band in the form of everyday objects. One day the meaning of these messages may become apparent, so recorded here for that time.

see also: *Who made these named thimbles* topic

The listing is in alphabetical order of the lettering.

1st Jan. Needle and thread ceremony Women's College Oxford



Birchcroft

3rd Еврейчета София



brass

red rubbed off band

Bulgarian: Na Sofiiskite Evrei - English: To the Hebrews of Sofia
with Star of David

Germany

1890s-1910s

4 - H CLOTHING 1949 and "4 - H CLOTHING 1983" and "4 - H CLOTHING, 1984"



Simons Philadelphia

award winners' thimbles

top L: sterling silver with gilt band

bottom R: unknown year

5 MEI 1945-1985



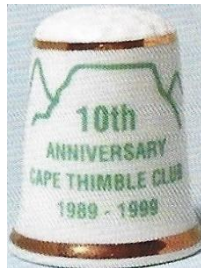
Pako Netherlands
applied symbol of dove of peace on flag colours of Netherlands

10 1984-1994 S.A.T.C.



handpainted by Gili Davis
porcelain

10th ANNIVERSARY CAPE THIMBLE CLUB 1989 - 1999



Frika Collection
china
background outline Table Mountain

10th Anniversary Thimble Guild 1970 - 1980



Georgia USA
plastic

13th DTS CONFERENCE BOURNEMOUTH MAY 1 – 2 2013



Woodsetton Dudley UK
lacquered copper
knitting implements etched on verso

18.7.1975 IRJA MARTII 2009



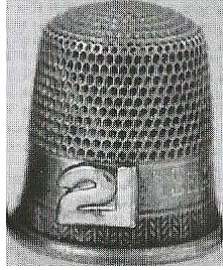
Germany
gold
Finnish thimble collectors

20 JAHRE FINGERHUT MUSEUM 1982-2002



Thorvald Greif Germany
925
lower: enamelled 925

21



Simons Philadelphia
sterling silver
Seattle World Fair 1962

40



commemorating 40 years of South African Thimble Club 2024
3D printed

50th ANNIVERSARY MALTA GEORGE CROSS



James Swann & Son Birmingham

90



Settmacher Vienna Austria
copper with '90' applied (2002)
'My 90 life thimble' Franz Groiss, Settmacher (1912-2005)

250 YEARS HANDEL'S MESSIAH 1743-1993



James Swann & Son Birmingham 1993
maker's marks are lettered in the apex so had been missed

1788-1988



sterling silver
Australia's bicentenary commemorative for Embroiderers Guild of NSW
Guild's logo on verso

1889 PARIS



Alfred Féau France
800 silver

1889 PARIS-EXPOSITION/1889 EXPOSITION



Alfred Féau France
800 silver



Roger Lenain France
800 silver

marked FRANCE with size #9 1970s reissue

Beryl Frank: In the 1970s Roz Belford, an astute retailer of thimbles ... discovered that Lenain had stored the original dies for their thimbles ... Some of these thimbles were reissued for export to the United States. ... The size is marked on the thimble ... If FRANCE is stamped on the thimble, it was made in the 1970s."

this reissue uses hyphens to separate the words – using the longer phrase



1900 PARIS



Alfred Féau France
800 silver



Roger Lenain France
800 silver

marked FRANCE with size #9 1970s reissue

Beryl Frank: In the 1970s Roz Belford, an astute retailer of thimbles ... discovered that Lenain had stored the original dies for their thimbles ... Some of these thimbles were reissued for export to the United States. ... The size is marked on the thimble ... If FRANCE is stamped on the thimble, it was made in the 1970s."

1900 PARIS EXPOSITION



Alfred Féau France
800 silver

1914



Charles Horner Chester 1913/1914

World War I thimble with a disc with an applied enamelled disc with a Red Cross symbol

1914 + Iron Cross



R: Gabler Germany
800 silver

World War I thimble with a 1914 Iron Cross on the wide band
crown and 'W' lettered above 1914

L: stone in apex – R: applied Iron Cross within indentations

1914 LYON EXPOSITION



Roger Lenain France
800 silver



Roger Lenain France

marked FRANCE with size #9 1970s reissue

Beryl Frank "In the 1970s Roz Belford, an astute retailer of thimbles ... discovered that Lenain had carefully stored the original dies for their thimbles ... Some of these thimbles were reissued for export to the United States. ... The size is marked on the thimble ... If FRANCE is stamped on the thimble, it was made in the 1970s." The original apex is flatter than the original 1914 issue.

1914-1915 ARANYAT VASÉRT



Settmacher Vienna Austria
aluminium

Hungarian lettering for 'Jewellery for iron'
which was the WW1 appeal for money for munitions from the populace
painted "stones" are original on blue band version –green one was made with no coloured stones
(see Groiss on Settmacher - p59)

1914 + 1915 + 1916



probably Gabler Germany
iron or steel

World War I thimble but what significance are the three dates
do the crosses have significance?

1914 16



Roger Lenain (?) France
gilt sterling silver

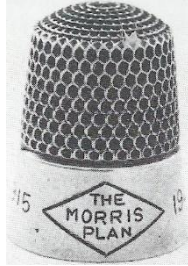
Isbister names this thimble as "Les filles filant" (Girls spinning)
unusual as there are two dates lettered within the pictorial

1914/16



Gabler Germany
800 enamelled silver
stone apex
includes Iron Cross

1915 THE MORRIS PLAN 1940



Simons Philadelphia
sterling silver
lettering within diamond-shape with dates alongside
1940s

1915 - 1919



tho I can't see the maker's marks this appears to be made by Henry Griffith & Sons
sterling silver
I feel these dates were placed at time of manufacture

1978



Monika Fald Germany
gilt sterling silver
replica of Kutch India Raj sterling silver thimble

1990 + horseshoe



Iles & Gomms Birmingham
brass
TCI Convention Louisville Kentucky

1995 WIEDERAUFBAU FRAUENKIRCHE DRESDEN



Thorvald Greif Germany
925

commemorating the reconstruction of the Dresden Frauenkirche with applied rebuilt church, 1995 copper attachment on the side represents the ruins of the church 1945, which is placed next to images of bombed ruins - '13.-14.2.45' is lettered vertically on thimble along one side of copper

2000



Simons Philadelphia
sterling

2000 NEW YEAR NEUJAHR



Settmacher Austria
aluminium
Settmacher closed in Vienna in 2005

2000 YEAR



James Swann & Sons Birmingham
sterling silver
Space Hubble computer – International Space Station

2004-2014 Schiller's 200 Jahre Wilh. Tell



Julius Wengert Pzorzheim Germany
sterling silver
limited to **100**

100,000 COPIES SHIRE PUBLICATIONS 8TH APRIL 1997



Crummles Enamels Poole

(A Gentleman in Khaki)



Henry Griffith & Sons Ltd Birmingham 1899
created during the Boer War being waged between Britain and South Africa

A MEMORIAL OF QUEEN CAROLINE OB^T AUG^T 7 1821 AG^D 53



sterling silver
wide band with royal symbols (thistle and clover) on the verso
it is interesting that this thimble mentions 'obituary' (OB^T)
she was Queen Caroline of Brunswick, wife of George IV

A present from Gay Ann Rogers "AMERICAN SILVER THIMBLES"



Simons Philadelphia
sterling silver
A gift from GAR to those who lent thimbles
1989

A STITCH FOR THE RED WHITE & BLUE



G W Hatton & Co Chester 1914
enamelled bands in the order of the lettering - red at the top of the band
band lettering is not coloured



G W Hatton Chester 1914
also, with a Chester 1918 assay mark
blue lettering with an added full stop
enamelled bands



G W Hatton & Co Chester 1914
enamelled bands



sterling silver with enamelled bands
similar to above but lettering is not coloured
and not hallmarked



similar thimbles with no lettering were produced to commemorate coronation of
Edward VIII, which never took place Chester 1936

L: the enamelling is worn

C: Charles Horner Chester 1936

b&w photo

order of the colour of the bands is reversed with the blue at the top of the band

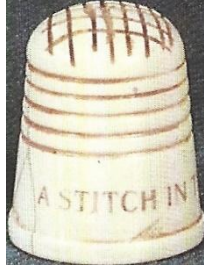
R: Charles Horner Chester 1936



applied worn coat-of-arms

A stitch in time

Other thimbles with this lettering can be found in several other topics



synthetic material
'A stitch in time'
TTG August 1987



James Swann & Sons Birmingham 1990

A stitch in time saves nine

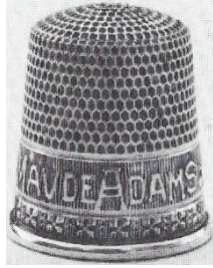


James (Hagop) Demirjian California
sterling silver



Simons Philadelphia
sterling silver
1900s

A THIMBLE FROM MAUDE ADAMS



Simons Philadelphia
sterling silver
c.1906

commissioned by Adams (1872-1953) to commemorate her starring role in 'Peter Pan' in New York, where Wendy gives Peter Pan a thimble as a kiss

A.C. ILLUM KYINDERNES BYGNING



Settmacher Vienna Austria
tombac

Illum (1863-1938) was a Danish businessman and store owner. His wife raised money for the Women's Society by selling thimbles thru the family business shows Women's Building, Copenhagen 1930s

A.O.A SILVER



the extra mark seems to be a size mark

A MERRY X-MAS



sterling silver with shadow gothic lettering on textured ground
unknown USA maker whose mark is a small crown
1900s

H Muhr's Sons produced a similar thimble

ADAM RIESE 1x1 RECHNEN



Thorvald Greif Germany

925

commemorating the 450th anniversary of 1500 master calculator and accountant, 2000 blue glass apex and open work with Roman numerals of dates, as part of the design

Africa Convention Feb 1990



Moroak

china

limited to **200**

AJOS



James Swann Birmingham 1917 1918 1922

lettering is always contained in this scrolled lozenge

mark has appeared on several James Swann thimbles with different patterns

AMERICAN Quilter's Society



AMERICAN RED CROSS HUMANITY NEUTRALITY



aluminium with a red-painted band – including the Red Cross symbol

I understand these thimbles were made during WWII

volunteers and members of the Red Cross prepared sewing kits, which were sent to the military in the USA and overseas

surplus supplies were used in one instance post-war by a schoolteacher to teach her first- grade students to add and subtract (eBay March 2019)

ANG



ANG lettered on the wide bands
for American Needlepoint Guild

two L: sterling silver – C: gold-plated (b&w photo) - plastic (R) Christmas in July 1984
see also: Needle Artists by the Sea

AOPA



Ketcham & McDougall New York

sterling silver

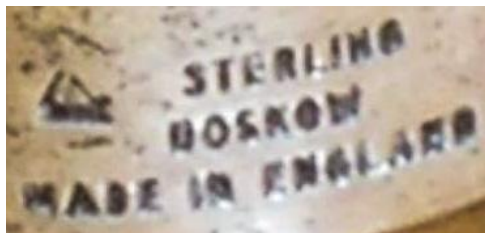
enamelled badge has 'wings'

AOPA lettered across the centre – for Aircraft Owners & Pilots Association

ARB ... and others



monograms: AMY - CAF - DAS - DAW - EFG - JAW - JJB - JSH - KDK - LRL - MEK - MGG - MOM with hearts in centres of Ms



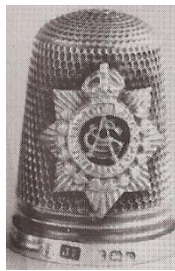
Leonore Doskow New York
sterling silver

chunky distinctive applied block lettering on the bands
marked 'Sterling Doskow Made in England' with a maker's mark on the verso
the mark is an L with a D superimposed on it, in a triangle
made in England by James Swann & Son, they bear the mark of Leonore Doskow
who worked out of Montrose NY USA - she designed and finished the thimbles



this Daskow creation with initials of **BCH**, lettered in cursive – is probably just a monogram thimble forms part of sewing kit, and all have a smooth surface – tape measure, kit and thimble all bear the same monogram + .925

ASC



James Fenton Birmingham 1914
for Army Service Corp.
used for supplying the army with all supplies
applied badge has the ASC monogram in the centre

Association of the Inner Wheel Club of Great Britain and Ireland



James Swann & Son Birmingham
for Rotary, with their logo – R applied logo
1983

Asylum 1808



interesting, dated Georgian thimble has cursive lettering
steel-topped sterling silver

ATLANTA '95



Simons Philadelphia
sterling silver

BATS 1978-1998



Steve Johnson
corozo nut

commemorating 20 years of Bay Area Thimble Society
bat and lettering in gold
Society disbanded in 2016
limited to **30**

BATTLE OF PLATTSBURGH SEPT 1814 LAKE CHAMPLAIN



Ketcham & McDougall New York
sterling silver
PAT'D
commemorating the centenary of the battle

Bay Area Thimble Society 25 Years 1978-2003



Thorvald Greif Germany
925

applied bat and thimble on stippled or frosted ground
limited to **35**
Society disbanded in 2016

BAY AREA THIMBLE SOCIETY 1978-2008 MORRO BAY SAN FRANCISCO SUFTA BUTTES



Simons Philadelphia
925

Society disbanded in 2016

Bertus van Dikkenberg 1998



Bertus is a Dutch collector and had this thimble created
engraver from Schoonhoven
thimble at R is a cover for thimble at L which then forms one thimble

BETSY ROSS



Joe Turner Jewelry Works Studio Coeur d'Alene
sterling silver

BORN 1564 DIED 1616



Shakespeare's bust in relief
steel-topped silver
c. 1776

C.A.T.



Nina Harby USA
Capital Area Thimbles club thimble 2009
10th anniversary
shell on apex
b&w photo

BENZ 1844-1929



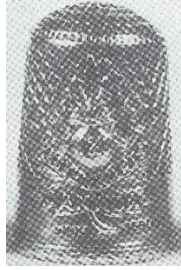
Thorvald Greif Germany
925
commemorating 80 years of Carl Benz 2009

CC 1492-1992



Thorvald Greif Germany
925
commemorating 500 years of Christopher Columbus

CANADA



Birks
sterling silver
applied unknown military insignia
for World War I

CAPE THIMBLE COLLECTORS CLUB



Charmaine Hoy Cape Town
handpainted resin
1992

Capital Area Thimble Society



handpainted china by Irmgard Greife
with CAT logo
club thimble 2018

Capital Area Thimblers



handpainted china by Teri Koenig
with CAT logo
first club thimble 1999
b&w photo

CAROLINE QUEEN OF (rose thistle shamrock pictorials)



sterling silver
c.1820

Cats 1984-2009



Tom Edwards Washington
sterling silver
to commemorate 25 years of Capitol Thimble Society
gilt star on apex

CENTURY OF PROGRESS CHICAGO 1934



brass
World's Fair commemorative

CHARLES ILES BEZOEK 1987



Iles & Gomms Birmingham
quilting thimble with concave apex
thimble made for Vingerhoed's – a Dutch Thimble Group – outing to the Charles Iles factory

CHICAGO 1978



Simons Philadelphia
pewter
created for attendees of Thimble Collectors International (TCI) convention

CHRISTINA BERTRAND THIMBLE COLLECTOR



Iles & Gomms Birmingham
brass
etched thimble alongside lettering
personalised
member of TCI

(clapsed hands)



sterling silver – pre 1880s
clapsed hands – with pansy, carnation and oak leaves

CLEAN HANDS FOR NEEDLEWORK



aluminium

so well used even the 'glass' top has popped out
neither a slogan nor an advertising thimble

CLEVELAND 1940 K.I.O.



Simons Philadelphia
sterling silver

K.I.O stands for Kentucky Indiana Ohio
commemorating the annual bowling tournament for Union Printers
the tournament was held in Ohio in 1940
(my thanks to Thimblestuff for this research)

CORKY 1-29-63



Leonore Doskow New York
sterling silver

made in England by James Swann & Son, they bear the mark of Leonore Doskow
enamel portrait in set-in circular disc of dog

"CORONET"



brass

L: "Coronet" England

R: "Coronet" with 'Trade Mark' with a crown or coronet in between on verso

(crown)



Henry Williamson Ltd Birmingham 1900

(crown) **M. 1939**



Charles Iles Birmingham
tailor's brass-lined steel

marked for the Air Ministry as official property of the Royal Air Force,
commonly found in their Maintenance Units where they were used in the repair of parachutes, barrage
balloons etc and also issued with airman's hussifs (Eileen Saunders 1991)

WD would be for the army ie War Department

RN would be for the Royal Navy

CYBER



Tom Edwards Washington
sterling silver

commissioned by Cyber Thimble Group for collectors around the world, 2017

(for) **CYBERTHIMBLE**



china

first group thimble 2000

DAIRYLAND THIMBLERS



Simons Philadelphia
sterling silver
made for TCI Convention in Milwaukee WI 2024

De Vingerhoed



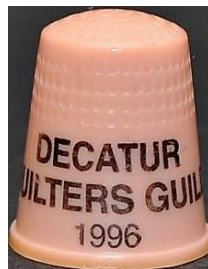
china
address of Dutch thimble club

De Vingerhoed 5 jaar 1982-1987



Hooijkaas (HH) Schoonhoven
Kay Sullivan's Dutch thimble catalogue

DECATUR QUILTERS GUILD 1996



Georgia USA
plastic

DEDALERAS 2012 ARGENTINAS



resin
Argentina's flag colours
Argentinian Thimblers

KΔ (Delta Kappa)



Simons Philadelphia
sterling silver
fraternity thimble
see also: ΠβΦ (Pi beta Phi)

DORCAS THIMBLERS ACTS 9



Simons Philadelphia
sterling silver
club thimble for Florida's Dorcas Thimblers
the coral set into the map shows Sarasota, for foundation members

DORSET THIMBLE SOCIETY 1985-1995



James Swann & Sons Birmingham

DORSET THIMBLE SOCIETY 3rd INTERNATIONAL CONFERENCE 21-23 MAY 1993 SOUTHAMPTON



handpainted Dorothy Newsome

DORSET THIMBLE SOCIETY 6th INTERNATIONAL CONFERENCE 1999



Crummles Enamels Poole

DORSET THIMBLE SOCIETY 1997



Crummles Enamels Poole

DTS 2ND INTERNATIONAL CONFERENCE 6.7.8 JUNE 1991



handpainted Dorothy Newsome

DTS 7th INTERNATIONAL CONFERENCE 2001



Crummles Enamels Poole

DTS 8th INTERNATIONAL CONFERENCE 2005



James Swann & Sons Birmingham

DTS 10th INTERNATIONAL CONFERENCE 2007



Andy Poole Birmingham

DTS 11th INTERNATIONAL CONFERENCE 2009



Andy Poole Birmingham

DTS 12th International Conference 2011



Andy Poole Birmingham 2011
Dorset Thimble Society

DTS 20 1985-2005



handpainted Dorothy Newsome
Dorset Thimble Society

E.S.A - LONDON



brass

Educational Supplies Association, London
probably made by Charles Iles of Birmingham
were they issued to schools?

ELECTION



Arthur Witting Birmingham 1927/1928/1929/1930/1931/1932

probably made by Henry Griffith & Sons as the sunburst patterning is peculiar to HG&S
Edwin Holmes in his *Thimble Notes and Queries* of winter 1989 ... "In Britain the term is unthinkable (in the political sense). In the sense of 'choice' it is evidently a brand name ... the dates are not all for election years which at the time were in 1931."

ELIXABETH HILSON HELP HOPEFUL SOROFUL HARTES



silver

16th century personalised thimble
apex missing
housed in the British Museum
unusual spelling of her first name

Elsa Williams School of Needle Arts



Simons Philadelphia
sterling silver

these thimbles were given to students who completed her course – emeralds around the band
Elsa Williams' school was in West Townsend MASS – it closed in early 1980s

EMBROIDERERS' GUILD 1901-1981



A.F. Pinxt

handpainted commemorative china 75 years
limited to **100**

Embroiderers' Guild of America



Simons Philadelphia
sterling silver

- 1: the US Guild was established as a branch of the London Guild between 1958-1970
- 2: larger applied logo which is the Embroiderers Guild of America's first logo as an independent group - applied logo of the Guild which has EGA with a thimble, sewing needle and threads
- 3: most recent EGA logo on band
- 4: unknown maker with EGA logo on apex

EMBROIDERERS' GUILD OF SOUTH AUSTRALIA



Pat Hagan South Australia
sterling silver

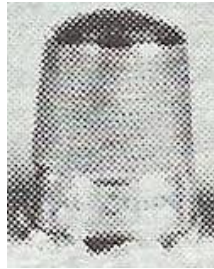
to commemorate the 200th anniversary of founding of South Australia 1986
Hagan's design is of a raised Sturt Desert Pea, which is South Australia's floral emblem
limited to **100**

EMBROIDERERS' GUILD QLD



Louis Hermann Brisbane
sterling silver
to commemorate 25th anniversary of founding of the Guild in 1968
Hermann's design is of an all over Cooktown Orchid, which is Queensland's floral emblem
1993

ESSEX GIRL GUIDES



I am fascinated by the supposed hallmark for this thimble – 1949
was this produced as a fundraiser?

ESTC 1984



Simons Philadelphia
sterling silver
club thimble for Empire State Thimble Club

ESTC 1984-2014



copper
club thimble for Empire State Thimble Club 30 years
applied New York state flower of a rose and Statue of Liberty
b&w photo

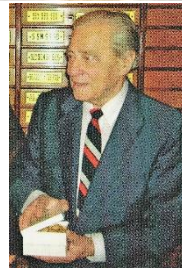
EXCELSIOR



Iles & Gomms Birmingham
Brass

see also: Gregorita, Jesusito, Josefina, Regina

'Exposition Paris 1937'



Settmacher Vienna Austria
brass - silverplate

L: 'Austria' stamped in indentation
R: blue apex

FECMU



sterling silver

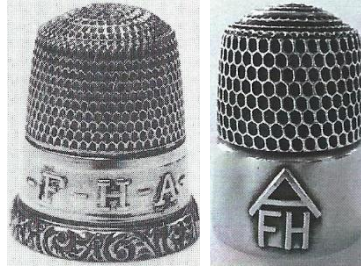
applied badge is for the qualities of
Faith **E**ndurance **C**ourage **M**odesty **U**nselfishness
of the Royal Neighbors of America

FEDERATION CENTENARY 1901 to 2001



Curtis Hine North Balwyn Melbourne
sterling silver
handmade
limited to **10**

F-H-A



Simons Philadelphia
sterling silver
for Future Homemakers of America
L: 1940s
R: applied logo Ray Nimmo 21st C

FIGHT FOR OLD GLORY



aluminium

FINGERHUTMUSEUM



Helmut Greif Germany
sterling silver
Thimble Museum in Creglingen

FINGERHUTMUSEUM 10 JAHRE 1992



Thorvald Greif Germany
925 – R: 14ct gold
Thimble Museum in Creglingen

FINGERHUTMUSEUM CREGLINGEN 25 2007



Thorvald Greif Germany
925
depicting Tilman Riemenschneider, carver of Creglingen church alter 16th century

(fleur de lis)



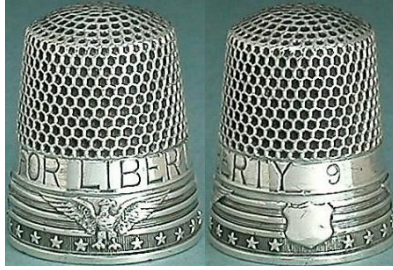
Lotthammer-Eber (six petalled mark) Pforzheim Germany
made for the Italian market
900 silver
R: Lotthammer-Eber mark has been over stamped with Florence's Piliti & Schreyer mark

FLOOD



Goldsmith Stern New York
sterling silver

FOR LIBERTY



Ketcham & McDougall New York
sterling silver
1917

FOR VALOUR



copper with applied Military Cross
1930s

FREUNDE DES FINGERHUTS 1993



Thorvald Greif Germany
925

design has ten thimble shapes in relief both upright and upside down each with a date – ranging from 1983 and 1992 commemorating ten years of Thimble Friends limited to **150**



there are also several single letters between the thimbles = ZEHN JAHRE meaning ten years



FRIEDEN IN DEN NIEDERLANDE 50 JAHRE FREI!



Thorvald Greif Germany
925

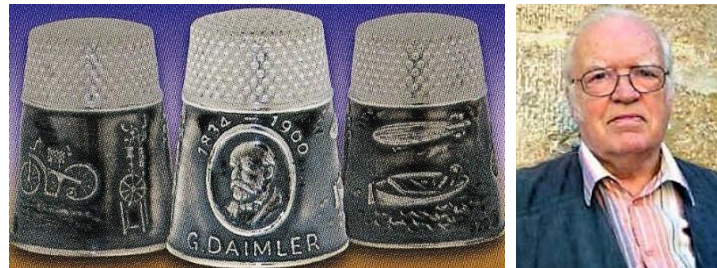
FRIENDS WAR RELIEF SERVICE



Ketcham & McDougall New York
also made by Simons Philadelphia
sterling silver

'Friends' would have applied to Quakers who were active in war zones as conscientious objectors
first set up at the start of Franco-Prussian war and revived at start of WW1
applied enamelled disc
1900s

G. DAIMLER 1834-1900



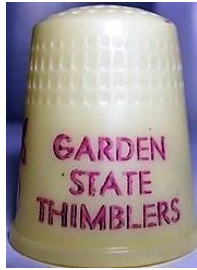
Thorvald Greif Germany
925
175th anniversary of Gottlieb Daimler 2009

G. King – G. K ... – K ...



sterling silver
Georgian trio
three similar thimbles with intriguing lettering
two of the thimbles have their lettering upside down to face the sewer when sewing

GARDEN STATE THIMBLERS



Georgia USA
plastic

GARDEN STATE THIMBLERS



Simons Philadelphia
sterling silver

GFS



Charles Horner Chester 1920
applied badge
Girls' Friendly Society

GOLDSCHMIEDHAUS HANAU 1979



Monika Fald Germany

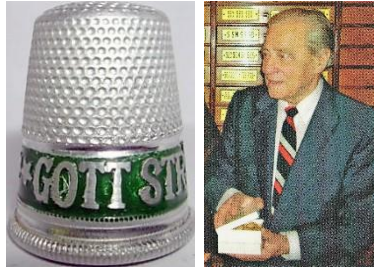
GOTT MIT UNS 1914



Germany

L: brass – C: silver with stone in place of damaged silver apex
propaganda thimble: God with us

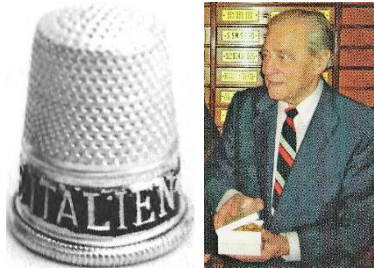
GOTT STRAFE ENGLAND



Settmacher Vienna Austria
aluminium

propaganda thimble: God punish England
green, red and black bands were available

GOTT STRAFE ITALIEN



Settmacher Vienna Austria
aluminium
b&w photo

GRAND NATIONAL JUBILEE

no photo

metal
for King George III
heads of the King and Queen

GREAT BRITAIN 50 KM FRANCE MAI 1994 26000DM



Thorvald Greif Germany
enamelled 925
commemorating opening of the Chunnel

GREENWICH 2000



James Swann & Sons Birmingham

GREGORITA



Charles Iles Birmingham
brass tailor's - with sprigs before and after lettering
see also: Excelsior, Jesusito, Josefina, Regina

GS



Ketcham & McDougall New York
sterling silver
for Girl Scouts
applied green enamelled badge
1880s

GUERNSEY



James Swann & Son Birmingham
Guernsey lettered diagonally on applied map of Guernsey

HANS SACHS 5. NOV. 1494-1994 500



Thorvald Greif Germany
brass
commemorating 500 year anniversary of this German poet and playwright

HAPPY CHILD UNHAPPY CHILD



pre-1884 sterling silver
lettering around rim with accompanying applied scenes around the band

HAWKEYE THIMBLERS



Iles & Gomms Birmingham
brass
Iowa club thimble 1986

HAWKEYE THIMBLERS 1982



handpainted Wanda Kauffman
sycamore

HAWKEYE THIMBLERS IOWA



Amish Kraft Co
brass
club thimble 1997

HEIL UND SIEG



Settmacher Vienna Austria
aluminium
propaganda thimble: Health and victory

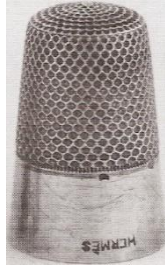
"HER MAJESTY" THIMBLE



Charles Iles Birmingham

This thimble had long been associated with Queen Victoria. This is not so
There were many commemorative thimbles made for the 1897 Jubilee
It may be an advertising thimble but what is it advertising?
Additional lettering has "ENGLAND" below the larger lettering

HERMÉS



France

sterling silver, with boar's head mark

is this (upside-down) lettering an advertising thimble – or the maker – or a prize for a designer working for the fashion label?

HEROES OF THE CRIMEA



Charles Iles Birmingham
brass

HIGHGROVE



James Swann & Son Birmingham

Highgrove House in Gloucestershire, home of King Charles III
presumably made as a souvenir for the when he was Prince of Wales
smooth apex

HONOUR THE BRAVE



Charles Iles Birmingham
brass

Houston Thimble Group "Chartered March 8 1977"



Georgia USA
plastic

H.W.SILVO / SILVO



sterling silver

all over blackberry patterning

is this lettering an advertising thimble – or the maker's mark?
with appearance of the thimble at L, maybe H.W is the maker

ICH KENNE KEINE PARTEIEN MEHR NUR DEUTSCHE 4-8-1914



Germany
brass

translated: I just don't know any parties any more
quote by Kaiser Bill an tne outbreak of World War I

IHN



Ketcham & McDougall New York
aluminium
applied swastika symbols

IHS



Swann Thimbles Birmingham 1992
made for The Thimble Guild
communion chalice with IHS in roundel above
IHS = first three letters in Greek for 'Jesus'
grapes to L represent wine – corn represents bread
limited to **250**

ILES ALURINE



Charles Iles Birmingham

ILES COMFORT THIMBLE



Charles Iles Birmingham
nickel silver

ILES PATENT



Charles Iles Birmingham
brass
unusual, beaded rim – vitreous lining

ILES TAILOR



silverplated

as this isn't open-ended like other tailor's thimbles, this name is a mystery

ILMO 1994



Tommie Jane Lane Nebraska

sterling silver

club thimble for ILMO Thimblers (Illinois-Missouri)

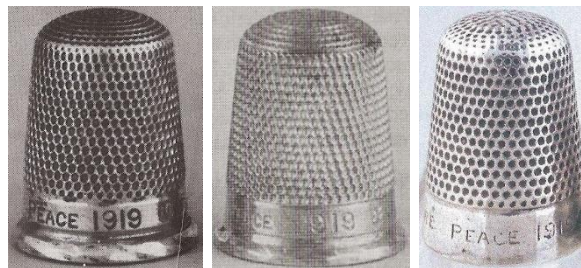
(Ionian Islands)



sterling silver

made for the British Exhibition 1851
with seven symbols around the band

INFANT WELFARE PEACE 1919



James Fenton Birmingham 1918

lettering on raised narrow band

three slightly differently shaped thimbles

IRMGARD V TRAITTEUR



Karlheinz Prantl Germany
brass
personalised
German thimble collector

JESUESITO

no photo

brass
double row of scrolls before and after lettering
see also: Excelsior, Gregorita, Josefina, Regina

"Join the THIMBLE EXCHANGE CIRCLE" "Thimbles Galore from THE THIMBLE LADY 1984"



plastic
Georgia, USA

JOSEFINA

no photo

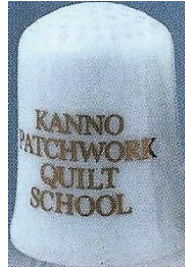
brass
double row of scrolls before and after lettering
see also: Excelsior, Gregorita, Jesusito, Regina

JUSTICE



James Swann & Son Birmingham 1948

KANNO PATCHWORK SCHOOL 1999



china
commemorating 20 years

KING AND CONSTITUTION

no photo

metal
for King George III
royal cypher (GIIIR) with crown above
celebrating the King's 50th anniversary 1809

КАУЪ КОЛЛЕКУЦИОНЕРОЪ НА ПЕРСМКОВ 2009 (Thimble Collectors Club)



Moscow Thimble Club
porcelain

KRUPP'S FLEISSIGE BERTA 42



nickname of German 42cm mortars used during WWI

Lady Slipper Thimblers of Minnesota *founded 1982*



Georgia USA
plastic

LEAVITT



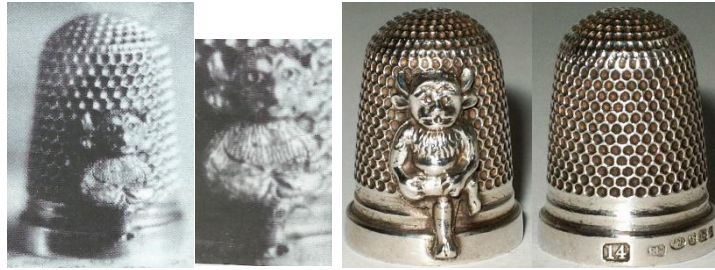
Simons Philadelphia
sterling silver
band lettering of this name is vertical to the rim

LEMBRANCA



brass
memento or souvenir - Portuguese

(Lincoln Imp) and **The Lincoln Imp**



sterling silver – unknown maker 1892
pewter

James Ward Usher, a Lincoln jeweller and silversmith, registered the Lincoln Imp, when he obtained the sole rights to use the Lincoln Imp in 1892

it was modelled on a stone imp high on the walls of Lincoln Cathedral

this is a RARE thimble

top R: Ray Nimmo Birmingham 2015

lower: pewter where the imp can be moved up and down, showing inner mechanism

L.C.C.



Charles Iles Birmingham
brass

for London County Council
and probably issued to schools?

interesting star mark on apex – blue vitreous lining

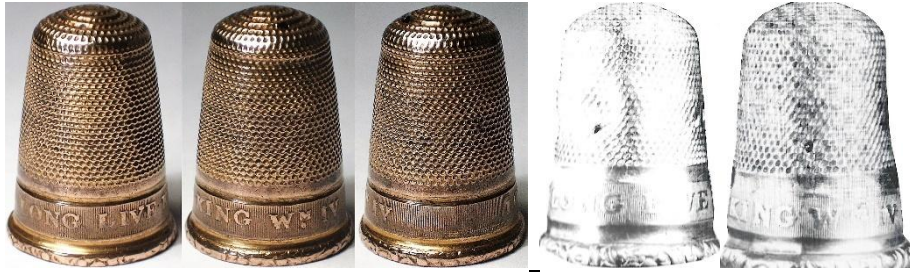
LSTMN



3D plastic club thimble

Lady Slipper Thimblers of Minnesota with Lady Slipper orchid

LONG LIVE KING W^M. IV



L: brass – R: sterling Z
William IV reigned 1830-1837
Is this the earliest royal commemorative?

LONG LIVE Q^N. ADELAIDE



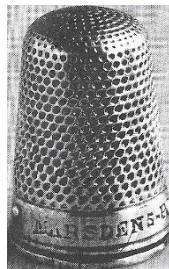
brass
Adelaide married William IV in 1818. They ascended to the throne in 1830

LOT.No A



brass with Birmingham anchor mark
sturdy tailor's thimble with strong indentations

MARSDENS PATENT



silver
first thimble patent granted on 12 May 1850 - to Charles Marsden (#13341)
ventilated thimble

MARTHA



Thorvald Greif Germany
925
commissioned by Martha Arufat USA 1999

MARTIN & SON



Charles Iles Birmingham
brass-lined steel
is this an advertising thimble?
World War I

MARTIN LUTHER 15.10.n.1487-15.2.1543



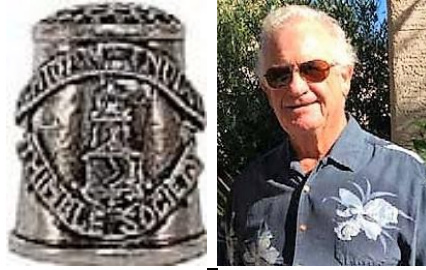
Thorvald Greif Germany
925
five dated panels, 1517 1521 1546 1555, commemorating life of Luther 1996
(see inner view)
first recorded by Di Pelham Burn (1993)

Medical Corps for RAF Doctors



James Fenton Birmingham 1938
applied badge has medical symbol with a crown at the top as part of the design

MICHIGAN INDIANA THIMBLE SOCIETY



Joe Turner Jewelry Works Studio Coeur d'Alene
sterling silver
club thimble

MITS



sterling silver
Mexico
club thimble for Michigan Indiana Thimble Society

MITS 35 YEARS 1982-2017



club thimble for Michigan Indiana Thimble Society

MITS MICHIGAN INDIAN THIMBLE SOCIETY



first club thimble

MOZART



Thorvald Greif Germany
925

commemorating 250th anniversary of his birth 2006

Myrtle Lundqvist Academic Award Sue Gowan 2012



Tom Edwards Washington
sterling silver

these thimble awards were given at TCI Conventions from 2008 - 2012

NAS NEEDLE ARTISTS by the SEA



James (Haqop) Demirjian California
.925 sterling silver

group is a chapter of American Needlepoint Guild Inc (ANG)

NATALAN



USA

NATIONAL SILVEROID



Charles Iles Birmingham
made for Hitchinson & Co Ltd (Legge Lane, Birmingham)

NDR



Simons Philadelphia
sterling silver
for Nancy Reagan with White House in relief

NEEDLEWORK TOOL COLLECTORS SOCIETY OF AUSTRALIA



Georgia USA
plastic

NEQG



Simons Philadelphia
sterling silver

NFTC 1986-2016



Tom Edwards Washington
sterling silver
commemorating 30 years of Nimble Fingers Thimble Club Seattle
the thimble figure on the dropped rim is known by members as Nimby
limited to **50**

NFTC 2015 OHIO



Tom Edwards Washington
sterling silver
commemorating the Mini Convention by Nimble Fingers Thimble Club Coeur d'Alene
moose and eagle

NICKEL



Charles Iles Birmingham
W indicates it was made for Woolworths

NICKEL SILVER



Charles Iles Birmingham

NICKEL SILVER. STERLING SILVER PLATED



a bit of a mixed message?
Woolworths & Co

NIMBLE FINGERS SPOKANE 1988



Joe Turner Jewelry Works Studio Coeur d'Alene
sterling silver
club thimble for Nimble Fingers Thimble Club

N'OUBLIONS JAMAIS 1914



Lenain France
800 silver
some examples have an ornate rim



Lenain France
800 silver

marked FRANCE with size #9 1975 reissue

Beryl Frank "In the 1970s Roz Belford, an astute retailer of thimbles ... discovered that Lenain had carefully stored the original dies for their thimbles ... Some of these thimbles were reissued for export to the United States. ... The size is marked on the thimble ... If FRANCE is stamped on the thimble, it was made in the 1970s."

The reissue wording ends with an exclamation mark.

NTC



Simons Philadelphia
sterling silver
for National Thimbles Collectors
in 1955 Sara Anne Weisbrot formed this group in the USA
it was the first organised thimble group anywhere in the world

NTCSA CONFERENCE 1994 MELBOURNE



Gems of Tasmania
china

NUR DEUTSCHE KEINE PARTEIEN 4.AUG.1914



Germany
brass

translated: I just don't know any parties any more
quote by Kaiser Bill an the outbreak of World War I

OHIO 1985



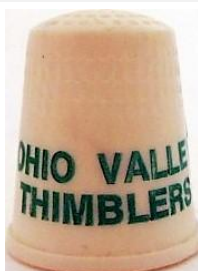
Iles & Gomms Birmingham
brass
made for their club's Mini convention

OHIO THIMBLE SEEKERS 10th ANNIVERSARY 1982



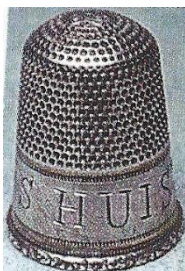
Georgia USA
plastic

OHIO VALLEY THIMBLERS



Georgia USA
plastic

ONS HUIS



Gabler Germany
lettered in Dutch meaning Our House
1900s

OTS 1982-2007



Simons Philadelphia
sterling silver
Ohio Thimble Seekers

PATENT



Charles Iles Birmingham
zinc lining with 'jewel' in apex
Patent no 22397 1895

PATENT ENAMEL



Charles Iles Birmingham
brass-lined steel
is this an advertising thimble?
maybe any enamelling has worn off?
World War I
other examples exist in brass

PATTY NEWMAN USA



Simons Philadelphia
sterling silver
personalised
with heart and four-leaf clover
limited to **100**
member of TCI

(Peace)



Henry Griffith & Sons Birmingham 1919
gilt-lined

applied peace emblem with a crown
according to Dorothy Friend (*TCI Bulletin* January 1988) this is the brass insignia for the
Royal Artillery

PEPPER



Horace Woodward & Co Birmingham 1888

made in the shape to use as a pepper shaker, with specific holes in apex
it has a diamond-shaped registration mark

PETER PAN REG^d



L: Henry Fidkin Birmingham 1918 – R: CU Birmingham 1918

Fidkin would have made the thimbles for the sponsor Charles Usher of Leicester
it is still a mystery what this lettering is for – it could be promotional but it isn't advertising a specific
product

PHILADELPHIA THIMBLE SOCIETY 1979-1989



Simons Philadelphia
sterling silver with gilt band
snowflake pattern

ΠΒΦ (Pi beta Phi)



Goldsmith-Stern & Co New York
panelled sterling silver
sorority thimble
see also: ΚΔ (Delta Kappa)

PIONEER WOMAN



Ketcham & McDougall New York
sterling silver
applied memorial

PRINS CLAUS 6.9.1926+6.10.2002



Thorvald Greif Germany
enamelled 925 in colours of Dutch and German flags

PRINSES CATHARINA-AMALIA HK 017.12.2003



Thorvald Greif Germany
enamelled 925
scalloped rim

PRISCILLA NUTMEGGERS



Joe Turner Jewelry Works Studio Coeur d'Alene
sterling silver
club thimble of Connecticut thimble collectors

RAF



Felix Morel Bath
blue enameled brass with sterling silver RAF wings attached

REAL GERMAN SILVER



Charles Iles Birmingham
none of Iles thimbles are made of silver – they are nickel silver

(Red Cross)



Simons Philadelphia
sterling silver
applied enamelled cross

REGINA



Charles Iles Birmingham

brass tailor's - with sprigs before and after lettering
see also: Excelsior, Gregorita, Jesusito, Josefina, Regina

RH



Charles Horner Chester 1919

what a puzzle this lettering is! RH with numerals -
(ignore the RH graphic above of 1919 - a typo - should read 1918)

lower: a date '1918' + '60' - on a wider band

there is then the intertwined WS or SW capped by more numerals on the verso
that isn't meant as a monogram?

I recently encountered a query from a German member in a 1986 *TCI Bulletin*, asking about this thimble -
"It seems that these marks were pressed during the production of the thimble, not later ... Perhaps it is
for a firm's name or an anniversary date?"

no-one ever attempted an answer

and now - late in 2020 - a thimble discovery with almost identical markings -

by James Fenton

there has been a suggestion that this is an anniversary date

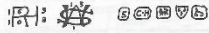
the date could be 19 January (numerals from the monogram) and the date is 60 years in 1918 (so 1858)
they could have been privately engraved using plain thimbles ...



James Fenton Birmingham 1918



Q3: This year we bought in England a quite normal silver thimble with a plain band. The hallmark is Chester, 1919; the maker, Charles Horner. But this thimble bears two more unusual marks. It seems that these marks were pressed too during the production of the thimble, not later.



Perhaps it stands for a firm name or an anniversary date? Can anyone help?
--C. Sommerkorn, West Germany

REMEMBER PHILADELPHIA



Iles & Gomms Birmingham
brass
TCI Convention 2008

REMEMBER THIMBLES ONLY JEAN SHOUP 1986-1987



Iles & Gomms Birmingham
brass
mail order thimble business California

ROBERT F KENNEDY WE MOURN OUR LOSS 1925-1968



USA
plastic

ROYAL ENGINEERS



James Fenton Birmingham 1939
George V cypher (the monarch is their Commander-in-Chief)
RE's motto: Honi soit qui mal y pense

ROYAL SCHOOL OF NEEDLEWORK



Stephen Frost Warwick Models
pewter
with a pair of applied strawberries

RSN



Clive & Clarissa Cooke Ludlow
sterling silver
for Royal School of Needlework
logo has a sewing needle thru the lettering
1980s

S.A.T.C. CONVENTION 1993



handpainted by Gili Davis
porcelain

S.C.T.C. 1980



Audre New York (retailer)
porcelain

SAND IN YOUR SHOES OCEAN CITY MD TOW MEETING APRIL 6 2013



Woodsetton Dudley
enamelled copper
TOW = Thimbles on Wheels

SATC 24th February 1996



Frika Collection
fine bone china
South African Thimble Club
limited to **100**

SATC 1993



Simons Philadelphia
sterling silver
for South African Thimble Club
applied club logo in shape of a thimble
'1993' engraved on verso
limited to **50**

SATC CONVENTION 1993



Gili Davis South Africa
Handpainted porcelain
R: lettered SATC 1993

L: limited to **30** – R: limited to **30** (given to international delegates)
thimbles are numbered

SATC Turn of the Century Convention 6 March 1999



Frika Collection
bone china
South African Thimble Club
limited to **100**

SATCC 40 YEARS 2024



bone china
South African Thimble Club

SCHMUCKMUSEUM PFORZHEIM 1978



Monika Fald Germany
museum is dedicated to history of jewellery

SCHOOLHOUSE QUILTERS KENMORE



Louis Hermann Brisbane
sterling silver

all round design has a quilt and a schoolhouse on an indented ground – patterning continues over the apex

SCHWARZ-GELBES KREUZ 1914



aluminium

promoting an Austrian aid organisation for war invalids and their families, which started on 31 August 1914

notice the depiction of the medal pressed into the thimble available with black or yellow band

SCTC



Tom Edwards Washington
sterling silver

club thimble for Southern California Thimble Club 40 years

SCTC



Simons Philadelphia
sterling silver

club thimble for Southern California Thimble Club 1989

SIEG HEIL 1914



900 silver
stamped D.R.G.M.

SILVER. STERLING



Charles Iles Birmingham

South African Thimble Collectors Club Indaba II. 6-9 March 2019



china

SOUTH AFRICAN THIMBLE DAY 27 JUNE 1987



china

SOUVENIR



Charles Iles Birmingham
brass
with sprigs before and after lettering

SOUVENIR ST LOUIS EXPOSITION 1904



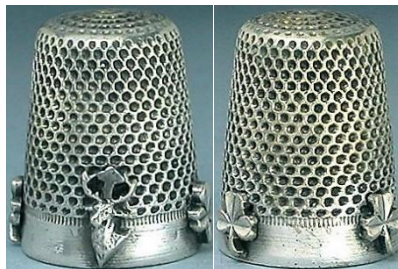
Iles & Gomms Birmingham
nickel silver

SOUVENIR ST. LOUIS EXPOSITION 1904



metal

(St Hubert)



French sterling silver
stag with three shamrocks affixed on band

St Peter's Band of Hope. July 1918



MAA Birmingham 1917

STÄDTISCHES MUSEUM SCHWÄBISCH GMÜND 1979



Monika Falk Germany

STER^G SILVER



STIRLING SILVER



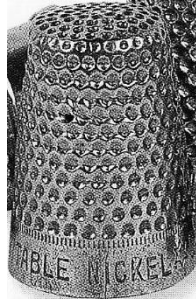
mid-Victorian sterling silver with steel apex
interesting spelling

(swastika)



Waite Thresher USA
sterling silver with applied swastika L: child's size
1890s

TABLE NICKEL



TAYLOR'S NEW YORK 1939 WORLD'S FAIR



Taylor's Pork Roll was first available at the 1939 World's Fair
aluminium advertising with blue band

TAYLOR'S NON-SLIP PATENT



Charles Iles Birmingham
brass

TC 1967 1776-1976



Simons Philadelphia
sterling silver

1967 is the date celebrating the start of Ruth Mann's thimble group which became a round-robin thimble group
1776-1976 dates on verso commemorate the American bicentenary

TCI 20 YEARS 1998



Simons Philadelphia
sterling silver

TCI 2000



Thorvald Greif Germany
925

commemorating the millennium with darkened band including an applied thimble with 'New Year 2000' lettered within – applied bunch of flowers
apex has 'TCI' with thimble

TEG



James Swann & Son Birmingham
lettering on dark blue enameled band
for The Embroiderers Guild (UK)

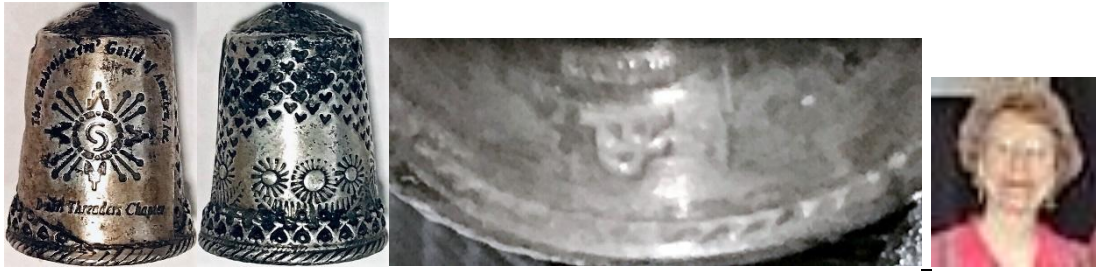
THE EMBROIDERERS GUILD 1960 1990



Peter Gertler Melbourne
sterling silver/gold dipped sterling silver

The Embroiderers Guild of **Victoria** commissioned Gertler to create a design for 30th anniversary
applied pair of scissors
limited to **100** of which **30** were the gold edition

**The Embroiderers' Guild of America Inc
Desert Threaders Chapter**



Tommie Jane Lane Nebraska
sterling silver
hearts design on verso

"THE GIRLS' CLUB"



Webster USA
sterling silver
lettering includes a swastika
thimble would have been made before World War II
two different forms of lettering

THE INNER WHEEL



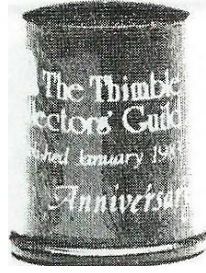
James Swann & Son Birmingham
enamelled sterling silver
The Inner Wheel is for women in Rotary Services Clubs

THE SEATTLE THIMBLE SOCIETY



Tom Edwards Washington
sterling silver

The Thimble Collectors' Guild started January 1983 Anniversary



John Urwin Kelso Scotland
wood
1984
limited to **1000**

THE THIMBLE SOCIETY OF LONDON



Anne Young UK
handpainted boxwood
1983

THE THIMBLE SOCIETY OF LONDON 1982



James Swann & Son Birmingham

THIMBLE COLLECTOR



Simons Philadelphia
sterling silver

Fern Hill's personalised thimble to give to friends – designed by her brother-in-law
applied gold thimble with red enamelled rose

THIMBLE COLLECTORS CLUB 85 R.S.A.



Easy Promotions Johannesburg

china
club thimble

THIMBLE COLLECTORS CLUB SOUTH AFRICA We Love Thimbles



Georgia USA
plastic

THIMBLE COLLECTORS GUILD



synthetic material

TCG is name of the Scottish thimble sales catalogue (1983-2018)

THIMBLE COLLECTORS THE THIMBLE GUILD EST. 1970



Georgia USA
plastic

Thimble Collectors@ONElist.com EST. 1998



James Swann & Son Birmingham 2000
commissioned by CyberThimble Group for collectors around the world

THIMBLE GUILD 1970 1980



Simons Philadelphia
sterling silver
commemorating tenth anniversary of thimble group started by Evelyn Eubanks in 1970
1970 date is lettered on rim of an inscribed thimble image

THIMBLE SOCIETY OF LONDON 1984



pewter

THIMBLEFULL OF SAND AND SURFING TOO! TOW Carlsbad, CA October 21, 2023



enamelled disc on silver metal
TOW is Thimbles on Wheels

THIMBLES ON WHEELS (2023)



Marienela
resin

THIMBLES ONLY CA 1985



Iles & Gomms Birmingham
brass
Jean Shoup's mail order thimble business

THIMBLES ONLY-REGARDS JEAN SHOUP 1985



Iles & Gomms Birmingham
brass
mail order thimble business California

THIMBLES ONLY 1990



Iles & Gomms Birmingham
brass
Jean Shoup's mail order thimble business

THIMBLESELECT



handpainted by Gili Davis South Africa
porcelain
mail order thimble business
limited to **36**

THIMBLESELECT 1987-2002



Gems of Tasmania
china
mail order thimble business
limited to **130**

THIMBLETTER 20th 1973-1993



Daniel Riccio USA
bronze

THREE RIVERS THIMBLERS Pittsburgh, PA



Georgia USA
plastic

TO JEAN FROM THE LANTERN THEATRE



James Swann & Son Birmingham 1983
who is Jean?
Lantern Theatre is in Sheffield in England

TO MRS T.R.GILLIES DEVOTED SERVICES 1914-1918



9ct gold
Gordon Highlanders emblem on the verso
b&w photo

TOW 10/2021



china
Thimbles on Wheels
handpainted bat for Halloween-Christmas gathering

TOW 2017 CAROUSEL OF THIMBLE FUN OCEAN CITY, MARYLAND



Hog-Eye Inc
brass
Thimbles on Wheels



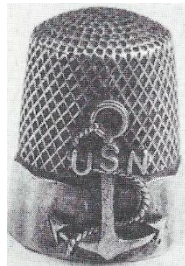
Hog-Eye Inc
brass
Thimbles on Wheels

U · S · 1



Simons Philadelphia
14ct gold
doesn't look like a cartouche

U S N



Simons Philadelphia
10-panelled sterling silver
applied anchor with USN
1940s

VERMONT 1981 STITCH IN TIMERS



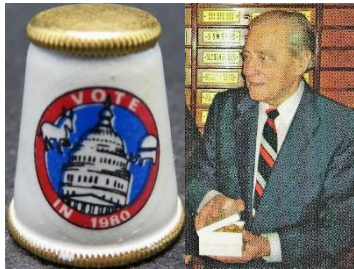
James (Hagop) Demirjian California
925 sterling silver

VICTORIA G.G, 1230



Gabler Germany
aluminium
reeded rim
what intriguing wording
lettering almost looks like a London phone number from 1920s

VOTE IN 1989



lacquered brass
Settmacher Vienna Austria
decorated in USA

VROUWENKIESRECHT



brass
reeded rim
Dutch: Women's suffrage

WANDA Y KAUFFMAN IOWA



Charles Iles Birmingham
brass
thimble collector

WAR CHEST FUND



Charles Iles Birmingham
ivorine

During the 1914-1918 war 13,000 white ivorine thimbles were donated by Mrs Ninian Thomson to the War Chest Thimble Fund in New South Wales to raise funds for comforts for the Australian men fighting in Europe during World War I

WELSH THIMBLERS



Vale Wales
1996

WELSH THIMBLERS 2007



Andy Poole Birmingham

WEMBLEY 1924 (1925)



Henry Griffith & Sons Birmingham 1924
the lion was the symbol of the 1924 British Empire Exhibition
as shown on the commemorative postage stamps
thimble box lettered 'Present from Wembley' with identical lion as on thimble



different thimbles from Charles Iles
nickel-plated and brass versions lettered BRITISH EMPIRE EXHIBITION



Arcadian China
British Empire Exhibition Wembley 1925
RED^o N°712455

Where did I get this ?



base metal with brass band
needle threader attached to one side

WILLIAM SHAKESPEAR



Charles Iles Birmingham
brass
size 2
lettered upside down
includes a bust portrayal of Shakespeare

WIR MÜSSEN SIEGEN



Settmacher Vienna Vienna
tombac
propaganda thimble: We must have victory

WITH THANKS FROM NORFOLK QUILTERS



Swann Thimbles Birmingham 1992

With Warm Regards JvH



John von Hoelle USA
tall brass with Celtic symbol between lettering
JvH lettered in a roundel
made at Iles & Gomms factory
John J von Hoelle's book is *Thimble Collector's Encyclopedia* 1986
lettering very faint

Y.W.C.A



Charles Iles Birmingham
silver-plated brass
for Young Women's Christian Association

Pictorial or cryptic messages on mid-18th to mid-19th century thimbles

In 2022 I added this section: thimbles from 18th century that have cryptic or secret coded messages punched or engraved around the band in the form pictures of everyday domestic objects. One day the meaning of these messages will become apparent: they are recorded here so that they aren't lost.

I don't know a term for this group of thimbles; so for now, they are known as Pictorial thimbles.

These thimbles first came to our attention as thimble collectors, in Brian Read's book which has hundreds of drawings of thimbles found in archaeological digs.

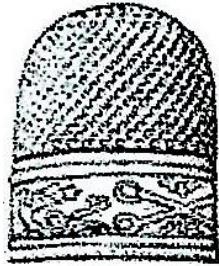
Two of these interesting thimbles are illustrated (drawings 289-290).

They are all made of base metals, including bronze or a copper-alloy – a few additional examples have emerged.



trellis – scissors – thimble – key – bottle

Read #289 sketch



Read #290 sketches



bird - key - scissors - flower - trellis - cartouche - wishbone or stirrup





scissors - thimble - trellis - pincushion - woman - beaded cross
found buried in Staffordshire



initial 'A' - trellis - two cups - two rackets or clubs (may even be spoons) - jug-like 'gin' bottle



tho this thimble with an almost identical set of pictorials is very badly corroded, the message symbols aren't damaged



two cups - two rackets or clubs (may even be spoons) - initial 'A' - jug-like 'gin' bottle - trellis - leaves - flowers - ASH



this thimble almost doesn't fit as a pictorial - only the linking word ASH gives it a place



several linked elongated rondels - flower in eash - ASH



initial A - club - rose - cartouche - beehive - dog - fish

References

- Christina Bertrand *Notions of war*. 1991
Jenny Scharff Bockel *Thimbles of Southern Africa*. 2004
Beryl Frank *Thimbles of France with waffled knurling*. 2003
Dorothy Friend *British commemorative and souvenir thimbles*. 1987
Franz Groiss *Thimble factory in Vienna founded 1863*. 1990
Magdalena and William Isbister *Exposition thimbles*. 2010
Magdalena and William Isbister *The "merchant's warehouse" fable*. *TCI Bulletin* spring 2007
William Isbister *Late 19th and early 20th century French silver thimbles: a visual guide*
Brian Read *Metal sewing-thimbles found in Britain*. 2017
Molly Pearce *Queen Adelaide At Your Fingertips* spring 2018
Diane Pelham Burn *Identifying steel-cored thimbles*. 1993
Gay Ann Rogers *American silver thimbles*. 1989
Simons pewter thimbles. *Thimble Guild* spring 2003

Contributors

Jeanne Millsap Beas | Lola Bennett | Christina Bertrand | Clarice Birch | Joanna Blackie-Sew Many Bits | Bleasdales
Jenny Bockel | Pawel Brzyski | Susan Dempster | Margaret Frecker | Kit Froebel | Micky Garvey | Connie Halket
Lydia Hamilton | Margaret Hickling | Julie Hollick | Edwin Holmes | William Isbister | Denise Jenkins-Welsh Thimbles
Eleanor Johnson | Friedy & Gerrit Kamp | Andrea Lange | Carolyn Meacham-Elegant Arts | Dagmar Nemeth
Ray Nimmo | Molly Pearce | Alan Powell | Gay Ann Rogers | Mabel Rogers | Wolf-Dieter Scholz | Irene Schwall
Simon | Norma Spicer | Kay Sullivan-De Vingerhoed | Thimble Society of London | Sandi Wood | Sandra Woodyard

This listing of Interesting lettering on thimbles does not purport to be complete or accurate in all aspects.
Rather it invites comments and contributions to add to our knowledge. My thanks to the contributors.

EMAIL thimbleselect@bigpond.com TO SHARE YOUR KNOWLEDGE

© Sue Gowan
April 2015