

Modern British sterling silver thimble makers

1955 – 2022

A - H

I think its time to showcase the skills of the modern British silversmith who has produced thimbles over the last sixty years. With a small output, by comparison with the silversmiths of yesteryear, these thimbles are largely handmade or machined in non-factory settings.

Many of the thimbles produced were made as commemoratives – for British royalty milestones – Easter or Christmas etc. None were produced in quantity, except for James Swann and Son (from Ray Coggle) (JS&S), the handpainted enamelled thimbles by Peter Swingler (PS) and Swann Thimbles (from Frank Jones) S(T) who are out of the scope of this topic – their output is simply too large to feature here. I have also ignored British enamelled thimbles unless the enamelling only forms a small embellishment.

Silversmiths are only featured here once the makers name has been established. I have unknown thimble makers identified only by initials in my archives.

They are included in the additional topic Modern British silver thimble makers still to be identified.

An invaluable source of these photos is from the original catalogues of The Thimble Guild, in Scotland (1983-2013) and Thimble Society of London (1981-2009). The information on new artists was at their fingertips at the time of their catalogues printing.

Apologies for the poor quality of many of the photos from the original catalogues.

The silversmiths are arranged in alphabetical order of their last name. Please share clearer photos to make this the worthwhile database it needs to be, to record these thimbles for posterity. I have included the place where the thimbles were created but not the assay office. Further biographical information is not as relevant to me – I'd rather the thimbles did the talking. I do think its interesting to show photos where they are available. Further information on these silversmiths as thimblemakers is contained in my topic Makers Marks on British Thimbles.

From 1976, all assay marks must be re-registered every ten years. I wonder how many of the following silversmiths have needed to do this?

You won't find any Chester assay marks in this section as the Chester Assay Office closed in 1961.

As I create this topic I am awed by the beautiful and imaginative designs. Some show the great skill and delicate touch of the silversmith – but may not have been intended to be used for sewing. Interestingly, also I note that many have the hallmarks running vertically down the thimbles. Many have plain polished surfaces, with no indentations, which makes this possible. After a while, some of the thimble designs seem so similar but the makers marks are definitely different! As in earlier times, the makers marks may not actually be those of the maker!! My aim is to list the thimbles by the hallmarked makers name – once these are identified.

It would be a wonderful search to chase as many of these makers for your sterling silver collection?
ENJOY the hunt!

I have already covered D I Dormon Brailsford and Kay Thetford Kendall, two modern British silversmiths, with their stand-alone topics, so they are not replicated here. Peter Swingler joined these topics in June 2017.

I know who the following four thimble makers are but have no photos of their thimbles. If you have photos, please share. Or please fill gaps where I don't have many photos – the more there are, the better.

CJB (Clifford John Barber) – LL (Links of London) - PJM (Merriman Silver Ltd)
WW (Whitehill Silver & Plate)

There are now **150 (A-H=86 + I-Z=64)** modern silversmiths thimbles illustrated here - with over 1300 different images of their thimbles – astounding!! 41% of these thimbles were produced in the 1980s, the heyday of thimble-making.

The assay office is recorded when known. From 2000 all British sterling thimbles had to have 925 as part of their assay hallmark. I have added this in where known, to aid where there may be no hallmark date.

I have not encountered any assay marks for British sterling silver thimbles with either a 2017 (there is now one example) nor a 2018 or 2019 mark.

Happiness is finding some new British thimbles with a 2020 and 2022 hallmark!
This reaffirms my feeling of sadness that thimble making using precious materials has ended in Britain!!

William Adams Ltd (WA)

Birmingham



1982
Birmingham

Charles George Alexander (CMA)

Isle of Man



1981
London for Isle of Man
vertical hallmarks
London import mark
rope-like rim

Ammonite (ALtd)

Glamorgan Wales

This Welsh company is based in Glamorgan, south Wales. They marketed their Easter and Christmas thimbles through The Heritage Collection based in Bristol, for distribution in the UK, USA, Australia and South Africa etc

There is a set of British national floral emblems created in 1978

The 1975-1978 thimbles were cast – the later issues (1980-1984) were die-formed and feel less substantial. Other makers marks encountered on the later thimbles are COG and B-L, but these makers marks are yet to be identified. Their output includes 9ct gold examples and gold-plated silver



1975 1977
Birmingham
Celtic Knots



1978
Birmingham
Daffodils
Welsh national floral emblem



1978
Birmingham
Shamrocks
Irish national floral emblem
different from 1982 issue



1978
Birmingham
Thistles
Scottish national floral emblem



1977
Birmingham
Welsh Spoons



1978
Birmingham
Welsh Spoons
9ct gold



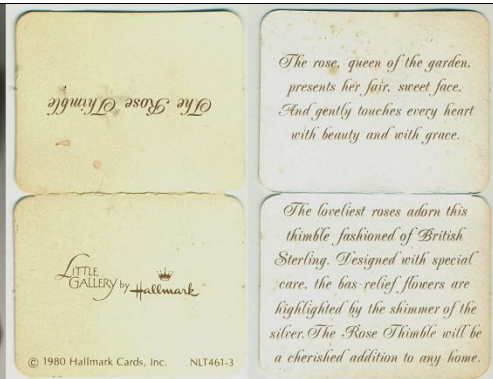
1978
Birmingham



1978
Birmingham
Daffodils
+ daffodil on apex



1978
Birmingham
Easter
daffodils



1980
Birmingham
Stemmed Rose
for Hallmark Cards – marketed by *Little Gallery*



1981
Birmingham
Daisies
with shadow of green



1981
Birmingham
Christmas tree and holly



1981
Birmingham
Christmas bells



1981
Birmingham
commemorating the Marriage of Prince Charles
with Prince of Wales feathers
+ silver gilt



1981
Birmingham
commemorating the Marriage of Prince Charles
with St Pauls Cathedral



1982
Birmingham
acanthus leaves



1982
Birmingham
Christmas



1982
Birmingham
Easter
rabbits



1982
Birmingham
My Valentine



1982
Birmingham
Primroses
silver-gilt



1982
Birmingham
Shamrocks
different from 1978 issue



1984
Birmingham
Easter
lilies



Birmingham
Lilies



SILVER
similar to 1978 Easter Daffodils
no makers marks etc



SILVER
similar to 1982 Easter bunnies
no makers marks etc

Aprilis (AS)

Devon

Aprilis seem to use a second makers mark (A Ltd) – different mark from Ammonite Ltd



1979

Birmingham

vertically stippled surface

Argyll Silver (AS)

Northfield Birmingham



1988

turret or castle shape



2002

Edinburgh

925

commemorating Queen Elizabeths Golden Jubilee
using the 2002 jubilee hallmark on apex as part of the design
these thimbles were made by Julius Wengert of Pforzheim, Germany
R: squat shape

Vincent J Ashworth (VJA)

Leppington Malton North Yorkshire



1993
London



Vincent Ashworth, Works Silver,
Leppington, Malton,
North Yorkshire

Asprey (A&CoLtd)



1986
London
mouse on apex

Kenneth Baguley (KB)

Baguley & Sons



1981
London

Simon J Beer (SJB)

Lewes Sussex



1989
Sheffield
Ellis family crest

Anita Bell Page (ABP)



1979
Sheffield
inscribed H.S.



1980
Sheffield
applied stylised flowers

Adrian Gerald Sallis Benney (AGB)

Reading

1 April 1930-26 June 2008

opened his first workshop in Whitfield Place in London. He moved to Beenham House in 1963 in Reading, which was his home and workshop until 1999. He then moved to Wiltshire

He was awarded the Royal Warrant by HM the Queen as goldsmith and silversmith in 1974, followed by a Royal Warrant from HRH the Duke of Edinburgh and HM the Queen Mother in 1975 and in 1980

HRH the Prince of Wales

Professor of Silversmithing, Royal College of Art and Jewellery 1974-1983

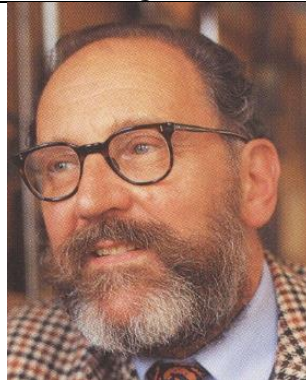


1977

London

commemorating Queen Elizabeths Silver Jubilee
stippled surface

similar design to **MN&WP**



John H Berry (JHB)

Tenbury Wells Worcestershire

Fellow of the Institute of Professional Goldsmiths

similar design to **WHM - WM**

[http: www.jhberry.co.uk about.htm](http://www.jhberry.co.uk/about.htm)



1979

Sheffield



Michael Bickerton (JMB)

Jewellery Quarter Birmingham

established for 50 years – in 2018

<https://www.bickertonjewellery.com>



1981

Birmingham

commemorating the Royal Wedding of Lady Diana and Prince Charles
pierced sides with C D 1981 and bells



Bishton's Limited (BL^D)

Birmingham



1978

Birmingham

gilt lining – made in Portugal
Birmingham import mark

Bishtons Limited (B(S))



1991

Birmingham

Blue John Gem Box (BJGB)

Matlock Bath



1988
Sheffield
pink stone apex

Michael Allen Bolton (MAB)

Cornwall

b.1938-d.2016



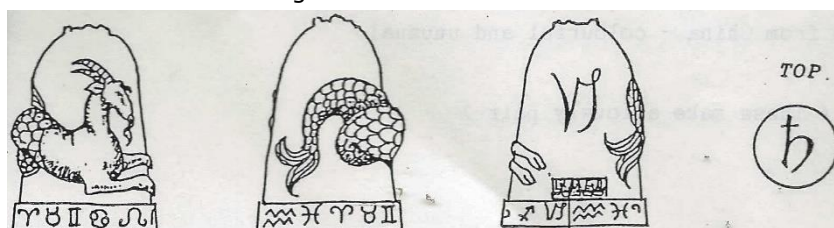
1975
London
sterling silver gold and opals



1984
London
sterling silver and applied gold flower
good weight



1989
London
Capricorn sign of the zodiac in relief
designed by artist Joyce Hargreaves
all signs of zodiac were created





Boodle & Dunthorpe (B&D)

Liverpool



1978

London

Christopher S Bowen (CSB)



1978

London

crystalline finish and rim
slightly flared rim



1983

London

stippled finish
slightly flared rim



1997

London

commemorating Golden Wedding of
Queen Elizabeth
also available in silver-gilt and 9ct
gold

slightly flared rim
commissioned by Thimble Society of
London – with sketch
limited to **800**



1997

London

'Elizabeth and Philip 1947 – 1997'
silver-gilt

Aidan J Breen (AJB)

Dublin
gold and silversmith



1985 1986

Dublin with Hibernia mark
St Brendan's boat scene – lower different boat

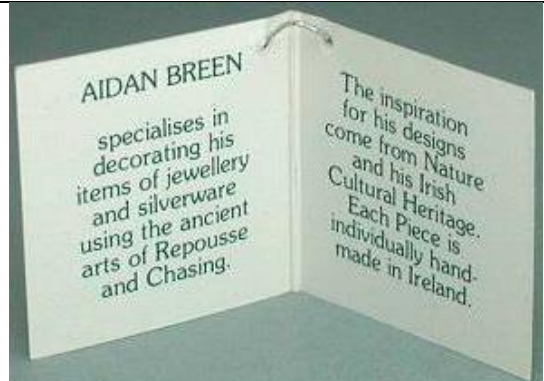


1985

Dublin with Hibernia mark
St Brigid's Cross



5



W I Broadway (B&Co)



1981

Birmingham

with an inscription *18 years in S.L.C*



1983 1990

Birmingham



1984 1989 1990 1995 1997 2000

Birmingham

similar design to **E&Co - nt - MK - DP**



1988

Birmingham

Thomas Buchanan (TB)

Cardenden Fife Scotland



1979

Edinburgh

stone in apex
marks on inner rim

Clive Norman Bullivant (CNB)

Clive trained in 3D design specialising in metal and ceramics and ran a successful Silver workshop before becoming a teacher of Design and Technology up to A-level. Three times winner of Goldsmith Craft and Design Council awards for silversmithing design and seven international product design awards Clive now works with handcrafted pewter producing pieces inspired by nature and travel (Bridge Arts in Uckfield)
he also creates handpainted enamelled sterling silver pill boxes



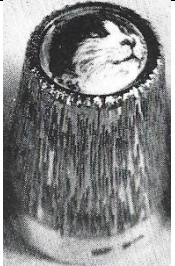
1982
London

vertically stippled surface
handpainted enamelled apex with cottage scene

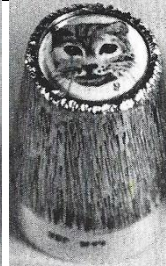
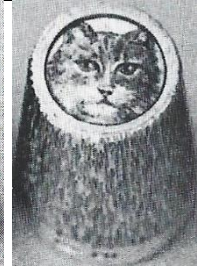
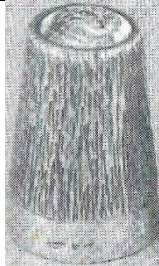


1982
London

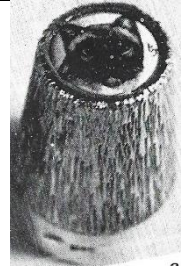
vertically stippled surface
handpainted enamelled apex with leopard or cheetah



handpainted enamelled apex with
black cat



handpainted enamelled apex with ginger
cat



handpainted enamelled apex
with Siamese

Clive Edward Burr (CB)

London

Clive Burr studied under Gerald Benney at the Royal College of Art and set up a workshop in 1979 with fellow graduates Jane Short and Alistair McCallum. In 1983 they moved to Old Street and were joined by Rod Kelly and Sheila McDonald. By 1988 Clive had set up by himself in Berry Street where he stayed until he moved into the new Goldsmiths Centre in 2012.



1981

London

commemorating the Marriage of Prince Charles
this thimble also exists with a different mark: **RL** (R)
this is the engraver's mark of Robert Legg



Timothy Joseph Burtwell (TB)

Tring Hertfordshire

This silversmith is using children's story characters as a theme



1979 1989

London

hand-indentations



1983 1997

London

Piglet and Pooh

both are sterling silver thimbles



1987 1992

London

Christopher Robin with Winnie the Pooh and umbrella in the rain



1991

London

mice amongst the oak leaves



925

Winnie the Pooh
with balloon - honeypot



London

bear with building blocks

Desmond A Byrne (DAB)

The Castle Yard The Parade Kilkenny Ireland

gold and silversmith

his shaped thimbles were commissioned by Fern Hill



1985

Dublin

turret or castle shape
vertical hallmarks



1996

Dublin

Kilkenny turret or castle shape



2001

Dublin with Hibernia mark

two cats with furry surface



Dublin

925

applied cats

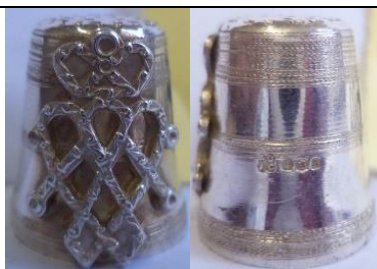
Philip Campbell (PDAC)

Mull Silver

Tobermory Isle of Mull Hebrides Scotland

Philip also created pewter thimbles

see also **TCG**



1980
Edinburgh
applied heart and crown



1982
Edinburgh
applied thistle on band



1983
Edinburgh
applied thistle on band



1983
Edinburgh



1983
Edinburgh
Dove of Peace To my Love message
applied dove



1983
Edinburgh
plaited-type rim



1983
Edinburgh



1984
Edinburgh
frosted bands



1985
Edinburgh
pincushion apex
limited to **100**
R in b&w: showing pins



1985
Edinburgh
criss-cross bands



1986
Edinburgh



1986
Edinburgh
lightly pressed floral design



1986
Edinburgh
commemorating the marriage of Prince Andrew
vertical hallmarks
hand indented apex
see also similar thimble for **NTS**



1987
Edinburgh
Throned 1837 VR
commemorating 150 years Ascension of Victoria
vertical hallmarks



1987
Edinburgh
whisky
vertical hallmarks t
histle on apex



1987
Edinburgh
The Celtic Ram
vertical hallmarks





1987
Edinburgh
 Celtic design
 vertical hallmarks along band on verso



1980s
Edinburgh
 applied Celtic pattern



1980s
Edinburgh
 plaited-type rim



1980s
Edinburgh
 applied Celtic lion rampant



floral



Celtic Knot sterling silver design
 around rim on polished ebony in
 squared shape
 limited to **250**



outline of mountains of Mull in silver
 over ebony
 limited to **250**

Capri Jewellery Ltd (CJ)

London



1977
London
 identical design made by **HH** – with other details identical

Robert Carr (RC)

Sheffield

recreations of Victorian patterns

this makers thimbles were for sale in David Jones Ltd in Australia



1999
Sheffield



1999
Sheffield



2000 2006
Sheffield
925



2002 2006
Sheffield
925



2006
Sheffield
925



2006
Sheffield
925

Audrey Grace Connelly (AGC)

Scotland



1985
Edinburgh
smooth sides

William Henry Creswick (WHC)

Studio Deems
Branscombe Beer Devon
Artist in gold & silver



1960
Chester
9.375 gold
dolls size - 9.00mm

Susannah Mary (Molly) Challoner (SMC)

Newcastle

Molly Challoner (1901-1990) was a Newcastle born and based jeweller and silversmith working from her family home 15 Framlington Place, Newcastle. She exhibited jewellery and silver at both the 1926 and 1928 Arts and Crafts Society Exhibitions. Her work was exhibited in 1994 at a Brighton University exhibition Women Designing: Redefining Design in Britain Between the Wars. These same pieces are in the collection of the Goldsmith Hall. She registered her SMC mark at the London assay office in 1923 and appears to have stopped working at the advent of the second world war, when she became a nurse and occupational therapist. After 1945 she contributed academically to the growing profession of occupational therapy.



1955
London

Chamberlain Clarke Partnership (CCP)

These thimbles were probably made by James Swann & Son (JS&S) or Swann Thimbles S(T)



1984 1991
Birmingham
applied cupids



1991
Birmingham
ornate applied band
rest smooth sides



1999
London
925

the hallmarked thimble is tiny - too small for practical use
the sterling silver Cupid holder has the 2000 hallmark symbol on the base opposite the holder figurine



Sterling (no hallmarks)
marks on leg of cupid



band of applied hearts

Elizabeth Jane Chantler (EJC JC)

Brough Cumbria

AJ Designs

she began designing and making thimbles and jewellery in 1975, with the assistance of Ailsa McKenzie

Jane uses both of her marks, irrespective of the assay date

Janes thimbles were also available thru The Thimble Guild in Scotland 2001-2007

no thimbles were created after 2012?

where there are no hallmark dates, the thimbles are her stock items



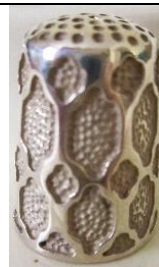
1973 1976 2002

Sheffield

Barcelona

(1973 version has smoother finish)

10.2 grammes



1980 - EJC

Sheffield

Moorish

11.9 grammes



1980 1982 2001

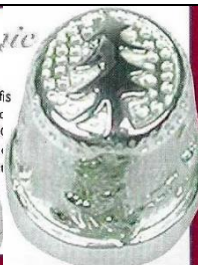
Sheffield

Tudor Rose

body is divided into eight panels

rose and leaf clusters are repeated on apex

9.9-13.5 grammes



1981 2006 - EJC JC

Sheffield

Teddy Bears Picnic

tree on apex



1982 2001

Sheffield

Chamomile Daisy

11 grammes

available in 9ct gold



1983 2002

Sheffield

Strawberry Fields

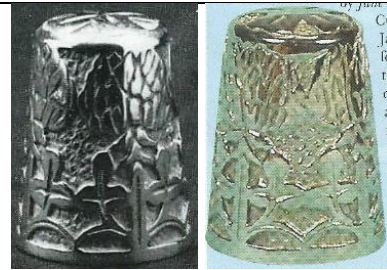
pattern repeated on apex

18 grammes

also available in 9ct gold



1983 2002
Sheffield
 Swallows and Clouds
 1983 limited to **100**
 also available in 9ct gold
 16 grammes



1983 2004
Sheffield
 The Silver Clover
 clover repeated on apex
 1983 limited to **200**



1984 2002
Sheffield
 Victorian Church Window
 13.9 grammes



1987 1988 - EJC
Sheffield
 Avalon
 one pattern repeated on apex
 16.4 grammes
 also available in 9ct gold



1989 1997 - EJC
Sheffield
 Swaledale Sheep
 11.8 grammes



1994 1995 2003
Sheffield
 Treble Clef
 13.2 grammes
 C: .375 (9ct) gold (2003)

R: in May 1995, this copy was offered for sale by P J Walter as Italian .800 silver, marked for Novaro and makers mark + 22



1996

Sheffield

commemorating Queen Elizabeth's 70th Birthday
commissioned by Thimble Society of London
limited 500 silver and 200 9ct gold
22.4 grammes



1997

Sheffield

commemorating Queen Elizabeth's Golden Wedding
two bells design on apex
19.9 grammes



2001

Sheffield

The Apple Orchard
showing three panels of the stages of apple trees
apple on apex

R: in May 1995 this copy was offered for sale by P J Walter as Italian .800 silver, marked for Novaro and makers
mark + 22
11.6 grammes



2001

Sheffield

Shooting Star
star on apex
11 grammes



2001

Sheffield

The Dolphin
dolphin repeated on apex
R: 9ct gold (2004)
15 grammes



2002

Sheffield

The Rabbit



2002

Sheffield

commemorating Queen Elizabeth's Golden Jubilee
also available in silver gilt and 9ct gold
commissioned by Thimble Society of London
hallmarks within the 0
17 grammes



2002 2003 - JC
Sheffield
 Goose Fair Six Geese a-Laying



2002
Sheffield
 Fishing Fleet (in Whitby)
 seagull on apex
 also available in 9ct gold



2003
Sheffield
 Persian Rug
 also available in 9ct gold



2003 2006
Sheffield Edinburgh
 Thistle
 four thistles all round
 St Andrews Cross on apex
 also available in 9ct gold



2003
Sheffield
 The Cats
 four cats with mouse on apex
 also available in 9ct gold



2006
Sheffield
 Three Ships Sailing
 anchor on apex



2006 2013
Sheffield - Edinburgh
 Nocturne
 owl in moonlight
925
 25 grammes



2007
Sheffield
 Three March Hares
 with crescent moon on apex
 JC makers mark
925
 limited to **75**
 14 grammes



2012 - JC
Edinburgh
 commemorating Queen Elizabeths Diamond Jubilee
 limited to **75** – with Edinburgh jubilee mark
 16.8 grammes



Bramble
 bramble repeated on apex



A child scampers over the grass, her kite bobbing above
 her (promotional material)
 12 grammes
 made for a Thimble Club



Millennium



'A Frende Loveth atte all Tymes'
A on apex
13 grammes
made for a Thimble Club



25th Wedding Anniversary
private commission



Charterhouse Mint Limited (CM)

London

set of 12 reproductions of old thimbles by this company from original museum thimbles, the set is entitled Thimbles through the Ages: a connoisseurs collection with a modern assay mark, so there can be no confusion. The original thimbles had no assay marks, so the new marks had to be incorporated in these thimbles, cast from the originals.



1986
London
14th century



1986
London
15th century
trifoliate holes in apex



1986
London
16th century
tailors



1986
London
16th century
touchstone of London



1986
London
17th century
stars



1986
London
17th century
Charles II and Katherine of Braganza's Wedding



1986
London
17th century
Feare God and honour the king



1986
London
17th century
includes makers mark of bird on pedestal



1986
London
18th century
cwners mark EC



1986
London
Birth of Prince of Wales 1841



1986
London
Christening of Prince of Wales 1842



1986
London
19th century

J B Chatterley & Sons Ltd (JBC&^SL^D)

Birmingham



1977
Birmingham
Just a Thimbleful

Lorna Christie Jewellery (LCJ)

Isle of Mull Scotland
vertical hallmarks



1989
Edinburgh
TSL in stepped cursive
commemorating AGM Sept 13th Cambridge
commissioned for Thimble Society of London



1992
Edinburgh
raised wreath of decorative leaves
hand indented apex with star-formation

Brian Clarke (BC)

The Old Schoolhouse Ballinaclesh Rathdrum Co. Wicklow Ireland

Brian Clarke is an Artist Metalsmith who has been running his own studio in Co. Wicklow, Ireland, since 1973. Having studied metal- and silversmithing techniques in Dublin, Paris and the UK, he embarked on a long career of commissions, private silversmithing work, sculptural pieces and research. His work is held in many collections, including in the National Museum of Ireland, in Dublin and the National Museum of Decorative Arts in Collins Barracks, Dublin.

<https://www.silversmithingworkshop.com>



1978

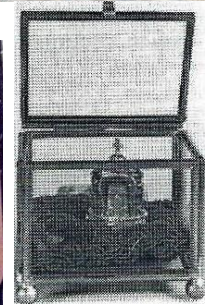
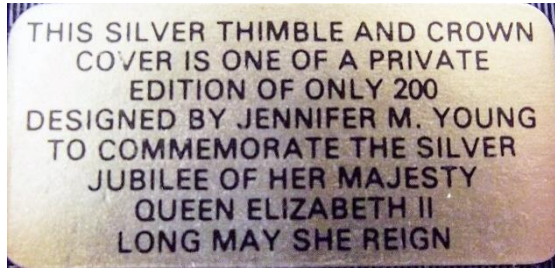
Dublin

rope-like rim and stippled surface



Timothy P Clayton (TPC)

London



1977

commemorating Queen Elizabeth's Silver Jubilee

1952 E^{II}R 1977

with silver gilt and four garnets crown which fits over thimble

lower L: gilt has largely worn off

limited to **200**

thimble designer is Jennifer M Young

thimble in glass and gilt presentation case with red velvet cushion

R: b&w photo

CME Jewellery (CME)

Leicester



1990s
Birmingham
925
seated Fairy atop



Birmingham
925
Stork with Baby atop



Birmingham
925
ballerina atop
import mark



925
Teddy Bear atop holding flowers behind his back



Birmingham
925
hedgehog



Birmingham
925
snail



with blue stones
Birmingham import mark



Albert Cohen & Charles Solomon (C&C)

Holborn Circus London
trading as Cohen & Charles



1964 1966 1969
Birmingham
red stone apex
size 7 9 5 6



1965 1966
Birmingham
size 4



1967
Birmingham
marks upside down
similar design to **SJR**



1967
Birmingham
size 6



1973
Birmingham
black stone apex
size 6



1974
Birmingham
agate set flat onto apex
size 5



Birmingham
stone set flat onto apex
size 5

Clive & Clarissa Cooke (C&CC)

Wood Yard Gallery Ludlow

they use the lost cast waxing or spinning by lathe – motifs soldered on
in 2002 these thimbles retailed at between £52-65

where there are no hallmark dates, the thimbles are stock items – if yours has a hallmark date, please share. some of these thimbles were sold in Australia in 1988 by Jihl Berry of *Thimble Collections*, and Barbara Kelly of *The Thimble Collector*.



1980s (tho 1987 date also seen)
applied RSN for Royal School of Needlework and thread needle
(seen incorrectly advertised as Royal School of Nursing)
this commission is where C&CCs thimble journey began
rope-like rim



1984 1986 1987

London

9ct gold Bees applied on beehive

R: some sold in Indian rosewood beehive container and an applied silver bee



1987

London

includes a sterling silver Beehive thimble holder with 9ct gold Bees

+ VI import mark into The Netherlands + *De Vingerhoed* KS mark



1984
London
beehive shape



1984 1988
London
applied 9ct gold Butterfly on apex



1984
London
applied 9ct gold bee on apex and flowers



1984 1988
London
Cat shape



1984 1986
King (chess piece)

also sold in an Indian rosewood container and silver portcullis

C: in May 1995 this copy was offered for sale by P J Walter as Italian .800 silver, marked for Novaro and makers mark + 22

I dont have any further details on the gold thimble (R)



1984 1987
Owl shape with dropped rim



1985
Penguin shape



1985
applied mouse in 9ct gold on apex



1986 1988

Queen (chess piece)

R: in May 1995 this copy was offered for sale by P J Walter (German mail order) as Italian .800 silver marked for Novaro and makers mark + 22 thimble box in shape of chess piece



1986

London

Fox
head shape



1986 1988

London

Dog
head shape



1988

1990

London

applied Ducks over vertical stippling
12 grammes



1988

London

large bee applied on beehive shape
Indian rosewood beehive container and a silver bee applied



1988 1989

London

Celtic Ribbon



1989
London
Celtic



1989
London
applied 9ct gold Butterflies and flowers



1990
London
applied Hedgehog atop



1991
London
strawberries
strawberry repeated on apex



1993 or 1996
applied mouse and 9ct gold cheese



2000
London
applied butterfly atop



applied 9ct gold Bee and flowers



bee and honeycomb



bear shape



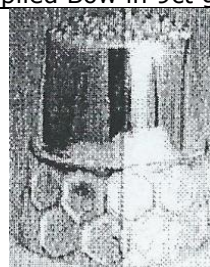
applied Bow in 9ct gold



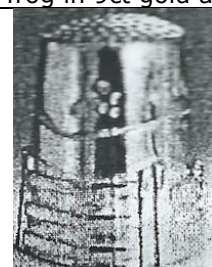
Applied frog in 9ct gold atop apex



hedgehog shape



honeycomb band



wall and gate



wildflowers

Ronald Cordon (RC)



1981
London
hand-indentations

Tim (Frogman) Cotterill

Cotterill grew up in the United Kingdom and has a passion for frogs. He moved to California.



c.1990
no hallmarks Sterling © Frogman



Crescent Silver (CS)



2012

Birmingham

applied Princes of Wales feathers Ich Dien
Highgrove
smooth surface

Anthony Stephen Darwent (ASD)

Castledon Derbyshire

Blue John Jewellery



1986

Sheffield



Deakin & Francis (D&F)

Birmingham

these thimbles were made by **JS&S** with D&F makers mark – others have the **JS&S** makers mark – made for Thimble Society of London



1982

Birmingham

commemorating the Birth of Prince William
+ 9ct gold
commissioned by Thimble Society of London
also made by **JS&S**



1984 (K)

Birmingham

commemorate the birth of Prince Henry
15 September 1984
gilded crown in 18ct gold including Thimble Society of
London on apex
also available in sterling silver
commissioned by Thimble Society of London



1985 (L)

Birmingham

commemorating Queen Elizabeth the Queen Mother 85th
birthday 4 August 1985
with red white and blue enamelling
commissioned by Thimble Society of London
limited to **60**



Christmas 1992 (S)

Birmingham



Deakin & Francis Birmingham

Gregory John Dennis (GJD)

boxed set of 12 designed by Austrian artist Ludwig Redl. Redl's name appears below the number of each bas relief design. Limited to **1000** sets (tho according to Jean Shoup in 1988, only **100** sets were ever made), commemorating American Revolution and War of Independence, in Britannia silver (958 1000)

See also **LR**



1984

London

no. 1: The Boston Tea Party



1984

London

no. 2: Paul Revers Midnight Ride



1984

London

no. 3: Fight on Concord Bridge



1984

London

no. 4: Battle of Lexington



1984

London

no. 5: Battle of Bunker Hill



1984

London

no. 6: Declaration of Independence



1984

London

no. 7: Molly Pitcher-Battle of Monmouth



1984 1992

London

no. 8: Washington Crossing the Delaware



1984

London

no. 9: Battle of Trenton



1984

London

no. 10: Battle of Germantown



1984

London

no. 11: Winter at Valley Forge



1984

London

no. 12: Surrender at Yorktown



boxed 12 of 1984 American Revolution set



1984 1992

London

The Spirit of 76

intended as a promotional thimble for the set



1992
London
showing #6 & 7
the set was re-issued?



1998
London
war scene

Stuart Devlin (SD)

London



1980
London
silver-gilt, enamelled floral band

Dix Jewellery (DJ)

trading as Harrison Brothers & Howson Ltd – see also **HBH**

made in Pforzheim Germany by Julius Wengert

Wengert marks his thimbles in the apex with sizes S M or L

some have typical eight-point flower mark of modern German thimble makers



1990
London
925
London import mark
eight-point mark on apex



2000 (millennium mark)
London
925
eight-point mark on apex



London
925
London import mark
bunnies in relief all round



London
925
London import mark
foxes in relief all round

Peter John Doherty (PJD)

Birmingham – the Worcestershire



1986

Birmingham

hallmarks are upside down

K L Downes (KLD)

Birmingham



1981

Birmingham

advertising Carlsberg

F Drury (Silversmiths) Ltd (FD)

Dore Sheffield



1982

Sheffield

Thomas Kerr Ebbutt (TE)

Edinburgh

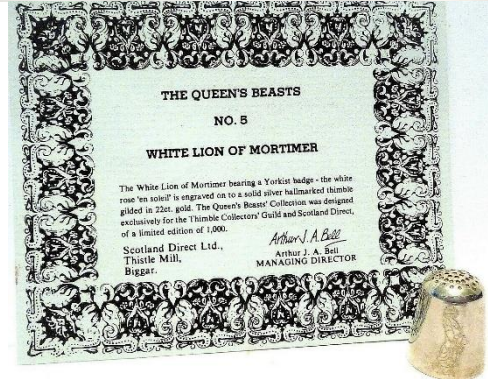
Ebbutt started work in 1896 and died in 1921. His company continued in business until 1977 when it was bought by Hamilton & Inches. H&I continued to use the TE mark until c2000



1986

Edinburgh

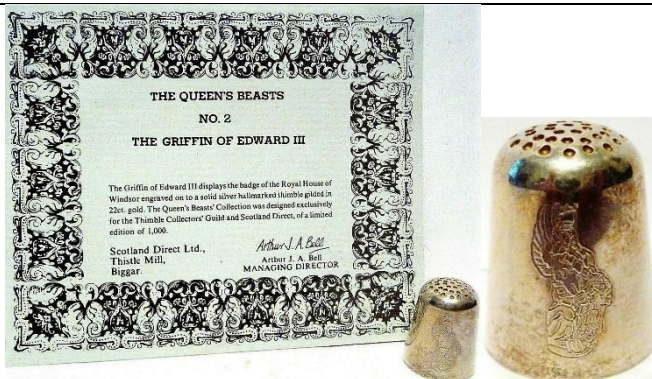
commemorating Commonwealth Games Edinburgh
R: gilded sterling silver
vertical hallmarks



1986 1988

Edinburgh

the Queens Beasts – White Lion of Mortimer
(no 5 from set of 10)
issued by Scotland Direct The Thimble Collectors Guild
limited to **1000**



1986

Edinburgh

the Queens Beasts – The Griffin of Edward III
(no 2 from set of 10)
issued by Scotland Direct The Thimble Collectors Guild
limited to **1000**



1989

Edinburgh

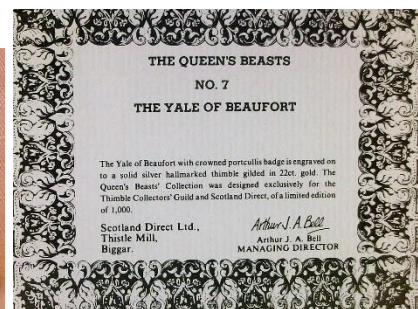
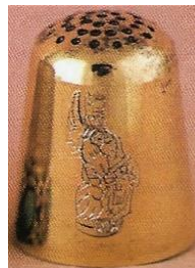
the Queens Beasts – The Lion of England
(from set of 10)



1986
Edinburgh
The Queens Beasts - set of 10
vertical hallmarkst



1986
the Queens Beasts set of 10
vertical hallmarks
silver gilt



1986
Edinburgh
two of the Queens Beasts
silver gilt

according to the accompanying certificate the set was made exclusively for Scotland Direct and limited to **1000** sets

full set: The White Greyhound of Richmond – The Griffin of Edward III – The Falcon of the Plantagenets – The Black Bull of Clarence – White Lion of Mortimer – The Unicorn of Scotland
The Yale of Beaufort – The Red Dragon of Wales – The White Horse of Hanover – The Lion of England



1990

Edinburgh

commemorating 90th Birthday of HM the Queen Mother
with official approval for the design and use of the Coat of Arms being sought from the Lord Lyon, King of Arms and Clarence House. The reverse bears a commemorative engraving, the sides are decorated with the Queen Mothers favourite flowers and roses.

the thimble is very large – almost twice the height of a normal thimble @ 1½ ins or 32mm; diameter 25mm
weight 44.4 grammes (1.57ozs)
edition of 475 thimbles

Elkington & Co (E&Co)

Birmingham

probably made by **JS&S**



1961

Birmingham

similar design to **B&Co – nt – MK – DP**

Exchange Findings Ltd (EFL^{TD})



1992

Sheffield

inscribed *Madeleine*

made in Germany – 8-petal flower mark on apex

Roy Fairweather (RF)

Ashbourne, Derbyshire

Ron Fairweather is currently head designer and chief gold and silversmith for Avanti Jewellers. He served his apprenticeship at a London-based company, producing items for the high end retailers around Bond Street. He was based in Wirksworth Derbyshire when his 1980s sterling thimbles were created.



1986
Sheffield



F J Flavell Ltd (FGF)

Stourbridge



1984
Birmingham
Joy



2002
Birmingham

Shirley Frost (SF)

handcast



Gentle face



Cherub



Head



Child



Chariot

these designs were identified by these line drawings by Thimble Society of London in winter 1981. These may have that hallmark date? Some of these were also available in brass



1977

Birmingham

commemorating Queen Elizabeth's Silver Jubilee



1978

Birmingham

face eyes closed



1979

Birmingham

face

many copies fakes were made of this design
finger-shaped



1979

Birmingham

face within swirls



1981

Birmingham

commemorating the Marriage of Prince Charles
art nouveau swirls on verso
with Welsh Dragon
finger-shaped



1981
Birmingham
 commemorating the Royal Wedding of Prince Charles
 with Prince of Wales feathers
 art nouveau swirls on verso
 finger-shaped

Brian Leslie Fuller (BLF)

Clerkenwell London



1974
London
 finely stippled sides



1977
London
 stippled sides



1979
London



1984
London
 dormouse

Garrard & Co (G&C^o L^d)

London

The House of Garrard

Regent Street *and* Albemarle Street London

These jewellers would have commissioned thimbles from various silversmiths



1983

London

enamelled leaves band with butterfly on apex
probably made by Paul Morley



1989

Birmingham

Royal Opera House
with Royal coat-of-arms of the United Kingdom
engraved on apex



1998

Sheffield

925

import mark

Hickory Dickory dock The mouse ran up the clock



Charles Owen George (COG)



1982
Birmingham
Christmas 1982 with reindeer



1982
Birmingham
Easter 1982 with daffodils



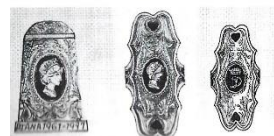
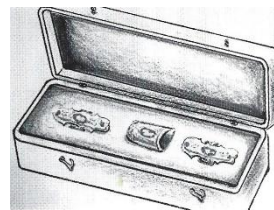
1984
Birmingham
Christmas 1983 with stylised tree

Peter Gillmore (PG L^D)



1977
London + London import mark + Jubilee mark
925
commemorating Silver Jubilee of QEII
identical design to the more well-known design by JS&S
(marks cleanly struck so not a reproduction)

Alicia Gordon (AG)



1998
Sheffield
commemorating the death of Princess Diana - Diana 1961-1997
sterling silver and enamelling (850 copies) – 9ct gold – 18ct gold and enamelling (450 copies)
commissioned by Thimble Society of London – with sketch of set with two finger guards
designer: Kuo-chi Lin
small dainty thimble

Ola M Gorie (OMG)

Orkney Scotland

she founded her jewellery company in 1960



1981

Edinburgh

applied thistle with Celtic symbols, including St Columba Cross
on finely stippled or frosted sides
flat apex



1981

Edinburgh

applied different Tudor Rose
on finely stippled or frosted sides
flat apex



1988 1989

Edinburgh

applied Tudor Rose
domed apex



1989

Edinburgh

applied thistles
domed apex



Norman Grant (NG)

Lundin Links Fife Scotland

(1943-2017)

his company was known as Dust Jewellery



1976 1980 1981

Edinburgh

squirrels

hand-indented apex

lower: this example was acquired in 1976 from the Design Centre, Haymarket in London



1978 1979

Edinburgh

bees amongst flowers with large honeycomb



1979

Edinburgh

large bee



1981 1982

Edinburgh

butterflies

1981 hallmarks are lettered across middle of thimble – 1982 they are on rim



1981 1982 1983

Edinburgh

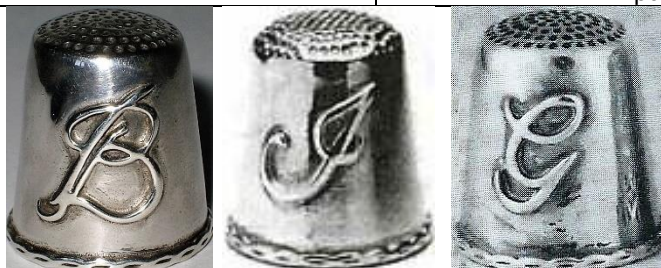
dragonflies



1982
Edinburgh
farm



1982
Edinburgh
bees in flowers with small honeycomb
patterned rim



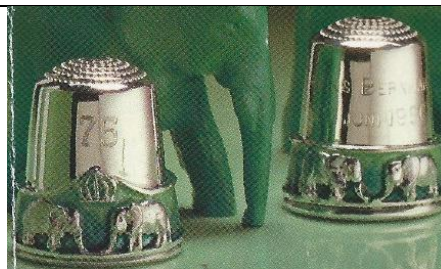
1982 1983 1986
Edinburgh
applied initial B (1982) I (1983) and G (1986)



1984
Edinburgh
commemorating 75th Birthday
30 April 1984 Prinses Juliana
blue enamelling – beaded rim signifies pearls she always wore and there are 75
crown over blue enamelling on apex
commissioned by Kay Sullivan - includes mark KS for her Dutch De Vingerhoed and the import mark of ZI into the
Netherlands
limited to **250**



1985
Edinburgh
commemorating 18th Birthday
Prins Willem Alexander 27 April 1985
gold-plated silver blue enamelling
commissioned by Kay Sullivan - includes mark KS for
her Dutch De Vingerhoed and the import mark of ZI into
the Netherlands



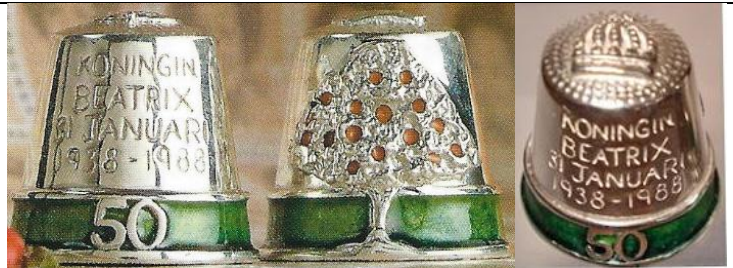
1986
Edinburgh
commemorating 75th Birthday
Prins Bernhard 29 Juni 1986
green enamelled band of four elephants and crown
commissioned by Kay Sullivan - includes mark KS for
her Dutch De Vingerhoed and the import mark of ZI into
the Netherlands
limited to **250**



1987

Edinburgh

commemorating 50th Wedding Anniversary of Princess Juliana and Prince Bernhard
wide blue enamelling and gilding - ruby sapphire and zircon below crown
commissioned by Kay Sullivan - includes KS mark for her Dutch De Vingerhoed and the import mark of ZI into the Netherlands
limited to **300**



1988

Edinburgh

commemorating 50th Birthday of Queen Beatrix
applied orange tree, orange enamelled oranges and green enamelled band
applied crown on apex
Koningin Beatrix 1938-1988
commissioned by Kay Sullivan - includes KS mark for her Dutch De Vingerhoed and the import mark of ZI into the Netherlands
limited to **250**



Martyn Guille (MG)



1999

London

Guernsey coat-of-arms
similar design to **WHM**



2000

London

925
slightly flared



Keith Hamilton-Gabb (KHG)

Sutton Coalfield, West Midland



1990
Birmingham

Harman Brothers (HBros)



1995
Birmingham
pixie atop

Harrison Brothers & Howson (HBH HB^S&H HB&H)

The Chase London SW4

made in Pforzheim Germany by Julius Wengert

Wengert's thimbles are uniquely marked with size in apex: S M L



apex has typical eight-point mark in shape of a flower of German thimble makers



see also **DJ**



2002
Sheffield (HBH)
925

commemorating Queen Elizabeths Golden Jubilee
2002 Jubilee hallmark is part of design
eight-point mark on apex



2003
Sheffield (HBH)
925

eight-point mark on apex



2012
London (HBS&H)
925

commemorating Queen Elizabeths Diamond Jubilee
2012 Jubilee hallmark is part of design
eight-point mark on apex



2022 (Jubilee mark)
London (HB&H)
925

commemorating Queen Elizabeths Platinum Jubilee
2022 Jubilee hallmark is part of design
eight-point mark on apex



925 with M in apex which is a unique size marking of Wengert
eight-point mark on apex

Joseph Hayward & Son (JH&S)

Frederick Street Birmingham



1962
Birmingham
size 7



1963
Birmingham
size 3



1963
Birmingham
size 7



1978
Birmingham
size 3



1978
Sheffield
size 7

R L Heaton (RLH)

Buxton



1981
Sheffield



head-shape

Henley Associated Jewellers (HAJ)



1997

Birmingham

commemorating Great Britain Secession of Hong Kong to China
commissioned by Thimble Society of London – with sketch

limited to **500**

designer: Kuo-chi Lin



2000

Birmingham

925

commemorating the Millennium

also available in 9ct gold

commissioned by Thimble Society of London

R: sapphire-coloured stones in centre of the zeros

John Herbertson (JNH)

handmade from 1970s



1977
London
castle



1978
London
applied M
smooth sides



1979
London
applied seabird
smooth sides



1979
London
applied hedgehog
smooth sides



1993
London
stippled surface



1995
London
commemorating Dorset Thimble Society's 10th Anniversary 1985-1995
stippled surface



applied daisies



Hans Herman (HH)



1977

London

cast

identical design made by **CJ** – with other details identical

Highland Line (HL)

Achnasheen Scotland

Tony Michael Holland



1985

Edinburgh

smooth sides

Michael D Hillier (MDH)

Dublin



1974

Dublin

stippled surface creating vertical panels



1983

Dublin

shamrocks
vertical hallmarks

no photo

1988

Dublin

Millennium of Dublin



1988

Dublin

wide smooth band with symbols: question mark, a figure with crook and a lighthouse ...



1991

Dublin

handcrafted

commemorating Dublin as City of Culture in Europe
Happy and Sad masks representing theatre – an open book for Book of Kells and symbolising learning – an artists palette – a musical instrument – a Dublin door and a Celtic brooch

David Hollander & Sons Ltd (DH&S)

Birmingham

based on Victorian thimble patterns
made by **JS&S**



1978 1981
Sheffield
size S L



1978
Sheffield
size S



1978
Sheffield
size 5

George Holmes (GH)

Birmingham



1991

Birmingham



The Thimble Guild (Nov 1991) attributes this thimble to David Parker – may only be the designer?

Sheila Holness (SJH)

Brent Knoll Somerset

member of Somerset Guild of Craftsmen



1990
London
applied Flowers and Butterflies
10.8 grammes



2011
London
applied Sprig of flowers and
leaves
includes Diamond Jubilee mark
12.4 grammes



2011
London
applied flower with band of leaves
includes Diamond Jubilee mark
12.2 grammes

Vera Mary Honeker (VMH)

Esher Surrey



1983

London

applied flower

Charles Henry Hooper & Sybil Elsie Hooper (CHH)

Birmingham

trading as Hooper Jewellery



1985 1987 1990

Birmingham

using five of Birmingham's Anchor
assay mark around band



1985 1987 1990

Sheffield

using five of Sheffield's Rose assay
mark around band



1985 1987 1990

London

using five of London's Leopard assay
mark around band



1985 1987 1990

Edinburgh

using five of Edinburgh's Castle assay mark around band



1986 1987

Sheffield

pierced band



1987 1990

British Hallmarks set

each hallmarked with the corresponding Assay Office

Mark Houghton Ld (MH MHLd)

Hatton Gardens London



1993
Sheffield
Dragonfly on stippled ground
daisies pattern on apex
made by **JS&S**



1998
London
applied Grapes
London import mark



1999
Sheffield
925
applied Swans on smooth sides
see identical design made by **AN**



1999
Sheffield
925
family scene all round after painting by Jan Steen



2002
Sheffield
925
applied Flower on smooth sides



Sheffield
925
scene all round
size 9

House of Lawrian (HOL)

Leigh-on-Sea Essex

Christopher Lawrence is a member of the Institute of Professional Goldsmiths



1977

London

commemorating Queen Elizabeths Silver Jubilee
applied gilt flowers and leaves on stippled ground

R: numbered in apex – No 68

similar design to **MN&WB - TT**



1978

London



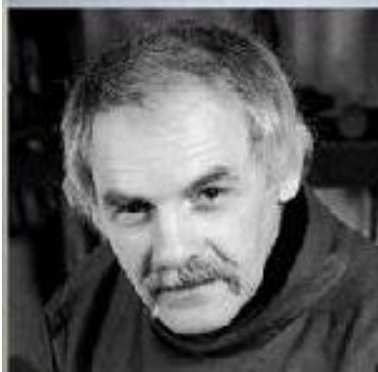
1978

London



1979

London
gilt flames



John Huddleston (JH)

Radley Oxfordshire

<https://www.jhsilver.co.uk>

silversmith and jeweller – he accepts commissions



2016
London

special commission – initial applied F and leaves
hand indentations



2017
London

hand indentations on apex



London

applied flower on smooth sides
unusually shaped indentations



References

- Vanessa Frisbee *The wonderful world of Norman Grant*. [http: www.modernsilver.com normangrant.htm](http://www.modernsilver.com/normangrant.htm)
Jane Chantler Ltd. Silversmith & thimble maker. Welsh Thimblers issue 52, autumn 2003
Diane Pelham Burn *Welcome to the newcomer*. At Your Fingertips. January 2009
Sue Pickles *Thimbles by Andrew J Poole*. Welsh Thimblers issue 51, July 2003
Rayment & Hull silversmiths & goldsmiths. Welsh Thimblers issue 30, April 1998
The Thimble Guild *Catalogues*
Thimble maker: Jane Chantler, England. TCI Bulletin summer 2008
20th century thimble makers: Wood Yard Gallery. Welsh Thimblers, issue 45, January 2002
[http: www.silvermakersmarks.co.uk](http://www.silvermakersmarks.co.uk)

Contributors

Wendi Aguiar | Linda Bennett | Joanna Blackie-Sew Many Bits | Bleasdales | Yolanta Bogdziewicz | Pawel Brzyski
Beryl Crago | Dorset Thimble Society | Joan Gale | Charlotte Goldberg | Karen Green (LAO) | Lydia Hamilton
Linda Heggs | William Isbister | Denise Jenkins-Welsh Thimblers | Barbara Kelly | Caroline Meacham-Elegant Arts
Terry Meinke | Ray Nimmo | Maurice O'Reilly | Sue Pickles | Diane Poesk | Wendy Ritchie | Wolf-Dieter Scholz
Clara Sennheim | Marina Shcherbatyuk | Norma Shattock | Jean Shoup-Thimbles Only | Jean Taylor | Rose Todd
Sue Wilson | Julie Winston | Sandi Wood

This listing of Modern British sterling silver thimble makers does not purport to be complete or accurate in all aspects.
Rather it invites comment and contribution to add to our knowledge. My thanks to the contributors.

EMAIL thimbleselect@bigpond.com TO SHARE YOUR KNOWLEDGE

© **Sue Gowan**
March 2016