

Roger Gibbons pewter thimbles 1984-1985

Gibbons was a pewterer who created thimbles for sale thru The Thimble Guild in the 1980s. His thimbles are unsigned, unlike the prolific pewter thimble makers Macmillan & Wife or Stephen Frost of Warwick Models etc.

If you are a collector of British pewter thimbles, you may recognise these thimbles as their distinguishing feature have a band of flowers around the rim of each of his thimbles. The flowers aren't identifiable as any specific flower. They are either painted red or blue – tho there is one with yellow flowers. As some of the bird photos are in black and white I don't know the colour of their flowers – if you own one of those thimbles, please get in contact.

I have encountered a few examples that were left unpainted.



As was usual during the 1980s TTG supplied no biographical details, if the maker is identified at all. I have not been able to find where Roger made his thimbles – probably somewhere in Scotland as most of their early thimbles originated in Scotland.

His output was really small and most of his thimbles feature birds atop the thimbles. Each bird or other subject is set on a handpainted green plinth set into the apex of the thimble.

His thimbles were first offered for sale by TTG in December 1984 and only the February 1985 thimble identified the maker as Gibbons. No other thimbles were offered by this maker after 1985.

BIRD THIMBLES



Blackbird
Gibbons named as maker
TTG February 1985
b&w photo



Blue Tit on branch
blue flowers
TTG December 198r



Blackbird
TTG August 1985
b&w photo



Cardinal
unpainted



Jay
TTG September 1985
b&w photo

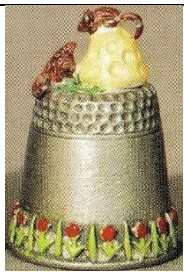


Linnet
red flowers
R: plinth unpainted
TTG October 1985

| | | |
|---|---|---|
|  <p>Magpie red flowers plinth unpainted TTG August 1985</p> |  <p>Nuthatch blue flowers plinth unpainted TTG September 1985</p> |  <p>Owl red flowers plinth unpainted</p> |
|  <p>Peacock red flowers</p> |  <p>Swallow TTG September 1985 b&w photo</p> |  <p>Swan blue flowers blue plinth – plinth unpainted</p> |
|  <p>Wagtail blue flowers TTG October 1985</p> | | |

OTHER THIMBLES

| | | |
|---|--|---|
|  <p>army tank unpainted</p> |  <p>cat and mouse blue flowers</p> |  <p>cat and mouse red flowers plinth unpainted</p> |
|  <p>cat and mouse unpainted</p> |  <p>dog with ball red flowers</p> |  <p>eagle with fish red flowers</p> |



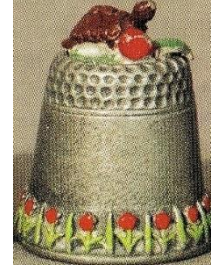
mice with cheese
red flowers



rabbit with lettuce
red flowers



rose
yellow flowers
indents below flower also painted



tortoise with salad
red flowers

Contributors

Yolanta Bogdziewicz

This listing of Roger Gibbons pewter thimbles does not purport to be complete or accurate in all aspects. Rather it invites comment and contribution to add to our knowledge. My thanks to the contributors.

EMAIL thimbleselect@bigpond.com TO SHARE YOUR KNOWLEDGE

© **Sue Gowan**
May 2025

