

Retail jewellers' thimble cases and boxes

THIS TOPIC IS NOW CLOSED HAVING REACHED 500 BOXES – THANK YOU

Over the last 24 years I have concentrated on thimble topics that have largely focussed on the thimbles found in collections. Now it is time to focus on the small thimble boxes and cases that made their appearance in the mid-Victorian era, thru to the beginning of the 20th century and the Edwardian era – used by retail jewellers for presentation of a quality item – an early tangible form of promotion and marketing, that could hold a treasured item safely for years.

It is the names of the jewellery stores and their addresses that form a link to the past and their current existence 100 years on. The thimbles are made of sterling silver and gold, tho they form an incidental part of this study. At least half of the thimbles are still in their original cases.

Many jewellers did go to the expense of having their cases or boxes personalised.

Looking online to see if these Jewellers still operate, it seems clear to me that these were single family businesses and so didn't continue for more than one generation?

It has been important for me to record these antique boxes' details. This is especially true where the lettering is on the outside as it is more prone to wear and rubbing off the details.

Many of these boxes have their details worn away. I have transcribed all the information lettered in or on each box as well as any symbols found there.

I have observed that the simpler the wording, the older the box and therefore when jeweller existed. Just a place would indicate that they were the sole jeweller in the area?

Do you have a jeweller from this era in your family tree? Maybe you will find a relic here?

There are descriptors lettered in many of the following cases/boxes of what the stores stood for – jeweller (jeweler in the US) – silversmith – goldsmith – diamond merchant – watchmaker/watch manufacturer – (heraldic) engraver - even horologist - and quaintly, optician (and ophthalmic optician) – or supplier to the British Royal Family, the Admiralty etc.

It is quite intriguing to note some of the quirky details included – like the Optician's medical qualifications – even a three-digit telephone number is included in one example. Some thimble boxes even included the early post code (from 1857/8 London was divided into ten postal districts, each with its own code. In 1917 a number digit was added).

An image of one store is included in a French box (RARE). Looking thru the jewellers' names, many just used their family name – a small business.

The use of "City" - even "Within" seemed sufficient at the time – these terms meant London – sometimes the address ended only with a London street name! These are relics of gentler times: a long-gone era. As expected, **London** jewellers dominate - then add the Greater London boroughs, it's a substantial total of the British jewellers' boxes recorded here.

Most of the retail cases supplied by jewellers are made of faux leather and cardboard boxes with lettering on the lid, with the odd exception of the more expensive celluloid [10] or ivory [1]. The cases' shapes are contoured to fit a thimble - rectangular or square in the case of boxes. The fastenings and hinges (applicable to the cases) are of brass. They weren't made to last, just to protect, so I feel these jewellers' boxes are worth recording here.

Some of the names and descriptors are very brief – others are ornate and wordy – the space was limited, as most of the lettering occurs on the inner surface of the case. The box's details are easier to photograph on the outside.

Gold lettering would have been more expensive – showing the prestige of the jeweller.

With the quaint practice of including multiple full-stops and commas, as part of the jewellers' details, it reflects the practice of a hundred years ago. I have chosen to omit these in the 21st century and organised the jewellers in alphabetical order by the first initial of each jeweller.

Whilst I was researching "Thimbles of Australia" (published in 1998) I actively sought out retail jewellers' thimble boxes. This numbered 17 jewellers. Twenty years on, this total has only grown to 31 cases. It

shows how important it is for your collection to search out these boxes, by preserving them for the future. By including them here keeps my book updated.

I feel a date included in the description at the time adds to the interest.

A buckled belt that surrounds the jewellers' details is a symbol of constancy. So far, I have encountered 24 examples.

With a few exceptions, none of the jewellers featured here were thimble makers. Can you find those that were?

There is nothing lettered on or in these retail jewellers' thimble cases or boxes that relate to actual thimbles. 'Dorcas Thimble Boxes' and 'Charles Iles THE thimbles' were covered in earlier Learn More About ... Thimbles topics.

Does your town, city or borough jewellery store feature here? Do they still trade? Please would you share an image? I was so chuffed to find a Brisbane jeweller's retail thimble celluloid case (see Other Countries).

Thimble cases and boxes are a diminishing resource, so treasure any you have.

I have tracked a few jewellers that still trade today.

All these images are of cases or boxes sold on ebay so not all as clear as I'd like. Any error of transcription is mine alone: especially where the language used is not English. Please help to remedy these errors if you have a more accurate description – by emailing me.

The list begins with the cases/boxes from Britain (298) – American (66) - Australian (36) European (85) - Other Countries (12) for the rest of the world. One box is over 180 years old.

British Jewellers

where most of the lettering in on the inner lid on the silk etc linings

A & J SMITH

23 & 25 St Nicholas St

ABERDEEN



GOLD LETTERING ON OUTSIDE

A A ALLDIS

28 Liverpool St

CITY {LONDON}

Jeweller & c



see also: ALLDIS & CO

A COVERDALE

Central Hall

REDCAR

Jeweller



A GARRATT

162 Main St

GUILDFORD

Goldsmith & Jeweller



ROYAL COAT-OF-ARMS

A GILL & SON
12 Bridge St
ABERDEEN



GOLD LETTERING

A H SAYER
12 Lumley Road
SKEGNESS
The Ring Specialist



LETTERING ON OUTSIDE

A HALL
124 Beckenham Rd
PENGE {LONDON}
Jeweller



A MALCOLM
13 Union Place
ABERDEEN
Watchmaker & Jeweller



LETTERING WITHIN A BUCKLED BELT

A MARTIN
8 Royal Hill
GREENWICH {LONDON}
Watch maker and Jeweller



LETTERING WITHIN A BUCKLED BELT
SIMPLIFIED NAME IN GOLD ON OUTSIDE

A P ROGER LIMITED

Arcade

GUERNSEY

Goldsmith Silversmith Jeweller & Optician



GUERNSEY COAT-OF-ARMS

A SMITH & SON

5 High St

CROYDON {LONDON}

Art Jewellers

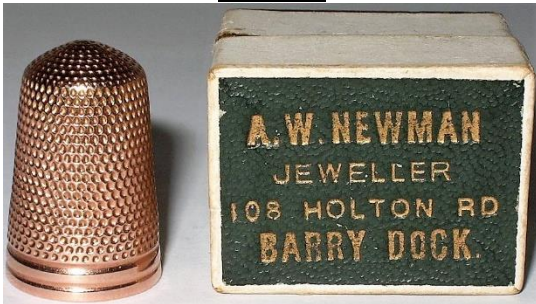


A W NEWMAN

108 Holton Rd

BARRY DOCK {WALES}

Jeweller



GOLD LETTERING ON OUTSIDE

AITCHISON BROS

2 Ludgate Hill

LONDON

and 60 Leith St

EDINBURGH

Goldsmiths & Watchmakers

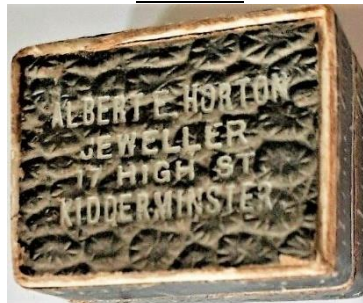


ALBERT E HORTON

17 High St

KIDDERMINSTER

Jeweller



LETTERING ON OUTSIDE

ALLDIS & C^o
 26 Liverpool St
CITY {LONDON}
 Jewellers &c



see also: A A ALLDIS

ALSTONS AND HALLAM
 30 & 31 Bishopsgate St
 within **LONDON**
 Goldsmiths &c



GOLD LETTERING WITHIN A GOLD BUCKLED BELT

ARTHUR ASHWELL
BISHOPS STORTFORD
 Watchmaker & Jeweller



WITH A CROWN SYMBOL

ASHFORD & DAVIS LTD
EALING {LONDON}
KILBURN
 & **STRATFORD**
 Goldsmiths



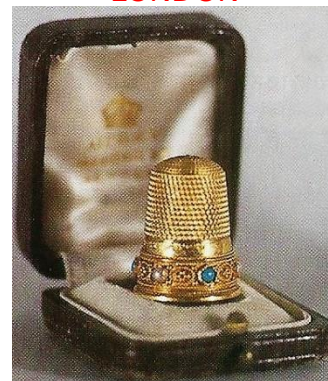
WITH A CROWN SYMBOL

ASHFORD & DAVIS LTD
 48a High Rd
KILBURN {LONDON}
 and **EALING**
 & **STRATFORD**
 Goldsmiths and Watchmakers



LETTERING ON OUTSIDE

ASPREY
 166 Bond Street
LONDON



GOLD LETTERING
 WITH A CROWN SYMBOL
STILL IN OPERATION IN 2019

ASPREY
166 Bond St
LONDON



WITH A CROWN SYMBOL

according to Thimble Society of London, winter 2000:
"the crown above the name denotes a royal warranty"

STILL IN OPERATION IN 2019

B ARNOLD
58 Chiswell St
LONDON E C
Jeweller &c



INCLUDES EARLY POSTAL DISTRICT CODE
WITH A CROWN SYMBOL
CELLULOID

B EDWARDS
11 The Parade
BECKENHAM {LONDON}
Silversmith



B T BURLTON
51 Borough High St
nr **LONDON BRIDGE**
& 29 Cheapside



BLUE LETTERING

BAKERS JEWEL CASKET
The Waltman Watch Depot
Market Place
WIGAN



ENGAGEMENT RING
"ESTD 1842"

BARNES & SON
 Market Street & Church St
GAINSBOROUGH
 Jewellers



BARRETT & CO
 109 Grafton St
DUBLIN
 Silversmith &c



ROYAL COAT-OF-ARMS

BENNETT
 36 Union Street
TORQUAY
 Jeweller



LETTERING ON OUTSIDE

BIRTS & SON
 Powis Street
WOOLWICH {LONDON}



CELLULOID

STILL IN OPERATION IN WOOLWICH IN 2020

BIRTS & SON
 Powis Street
WOOLWICH



GOLD LETTERING

STILL IN OPERATION IN WOOLWICH IN 2020

BOND & KEDGE
 Clock House
 High St
PUTNEY {LONDON}
 Jewellers



LETTERING ON OUTSIDE
 WITH A CROWN SYMBOL

BOOTS JEWELLERY DEPT



BOTLY & LEWIS

READING

Jewellers & Watchmakers



ROYAL COAT-OF-ARMS

BURNAM

Wine St

BRISTOL

Jeweller &c



C DAY

Bank Buildings

CAMBERWELL GREEN {LONDON}

16 The Broadway **WEST NORWOOD**

Jeweller and Silversmith



LETTERING WITHIN A BUCKLED BELT

C J RAVES

128 Petherton Rd

HIGHBURY



C LOCKHART

34 Finkle St

WORKINGTON



GOLD LETTERING

C PEARCE
 73 Commercial Rd
BOURNEMOUTH
 Jeweller



GOLD LETTERING

C T COWELL
 Victoria St
 & Prospect Hill
DOUGLAS I.O.M



GOLD LETTERING

interesting to note that thimble is the original, having the Isle of Man triskelion legs on the band

C W DAWSON
HODDESDON
 & **WALTHAM CROSS**
 Watchmaker Jeweller & Silversmith



CARRINGTON & CO
REGENT ST {LONDON}
 Goldsmiths & Jewellers



GOLD LETTERING
 WITH A CROWN SYMBOL

CHARLES HORNER
 23 Northgate
HALIFAX
 Jeweller



these retail cases are also the thimblemaker's cases

CHARLES S PROCTOR
 15 Grey Street
NEWCASTLE ON TYNE



CHARLES USHER

High St
KETTERING
also Clock Tower
LEICESTER
& **BIRMINGHAM**
Watchmaker Jeweller etc



retail box is also the thimblemaker's box

CHA^S BORELLI & SONS

35&36 The Borough
FARNHAM
Watchmakers Jewellers & Opticians



"BY APPOINTMENT TO HER LATE MAJESTY THE QUEEN"
FELT-LINED IN SHAPE OF AN EGG

CHAS D ALLEN

61 Lord St
SOUTHPORT
Diamond Merchant & Goldsmith



WITH A CROWN SYMBOL

CHAS E GREEN

37 Church Gate
LEICESTER
Watchmaker & Jeweller



GOLD LETTERING
WITH A CROWN SYMBOL

CHA^S F STYLES

5 South St
GREENWICH S E 10 {LONDON}
Watchmaker and Jeweller



LETTERING ON OUTSIDE

CHA^S MACDONALD

352 Duke St
GLASGOW
Goldsmith & Watchmaker



RUBBED LETTERING ON OUTSIDE

CLIFFORD & CO
STRAND WC
Jewellers



GOLD LETTERING

COLLINGWOOD & CO
45 Conduit St
LONDON NW

Goldsmiths & Jewellers to the Royal Family



GOLD LETTERING

CONSTABLE & MACGREGOR
PERTH {SCOTLAND}



GOLD LETTERING

COOK AND BURCHETT
72 73 & 131 Oxford St
LONDON
Jeweller



COOHER

302 Harrow Rd
LONDON W
Watchmaker & Jeweller



LETTERING ON OUTSIDE
"ESTABLISHED OVER 40 YEARS"
WITH A CROWN SYMBOL

CROUCH

9-11 High St
Arcade
and 48 Queen Street
CARDIFF
also at 45 High St
NEWPORT MON
the City Jewellers
for Artistic Jewellery



WITH A CROWN SYMBOL

D A P ANDERSON
15 & 16 The Arcade
Princes St
EDINBURGH



D H BLACKLOCK
SUNDERLAND
Diamond Merchant



GOLD LETTERING

DANIEL TODD
7 8 9 Argyle Arcade
GLASGOW



WITH A CROWN SYMBOL

DAVID W HISLOP
3 Argyle Arcade
GLASGOW
Watchmaker & Jeweller



WITH A CROWN SYMBOL

DEWHURST BROS
Garrison Street
BRIDLINGTON
and at **HULL**
Art Jewellers



WITH A CROWN SYMBOL
"ESTD 1957"

DISMORE
LIVERPOOL
Jeweller to the Queen



E & J W LIDDLE
SALTBURN BY THE SEA
Jewellers



WITH A CROWN SYMBOL

E & R S HARRISON
260 Seven Sisters Road
LONDON N
Jewellers &c



WITH PRINCE OF WALES FEATHERS SYMBOL
INCLUDES EARLY POSTAL DISTRICT CODE
IVORINE

E ANDERSON
The Arcade
James St
HARROGATE
Goldsmith



WITH A CROWN SYMBOL

E DOBELL
HASTINGS
Goldsmiths



WITH A CROWN SYMBOL

E FIELDING & SON
39 High St W
GLOSSOP
Jeweller



WITH A CROWN SYMBOL

E HOLBORN
44 Norman Rd
ST LEONARDS-ON-SEA
Watchmaker & Jeweller



E J GALLICHAN & CO LTD
JERSEY

Goldsmiths & Watchmakers



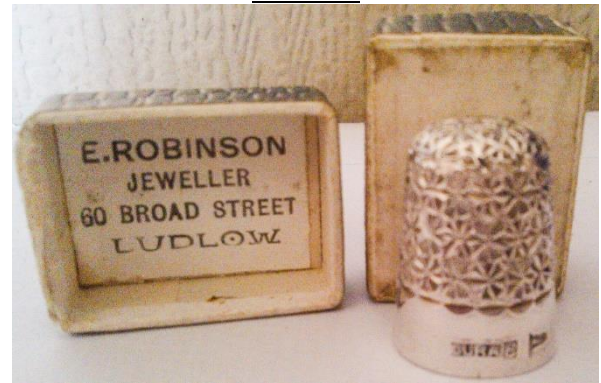
GOLD LETTERING ON OUTSIDE
COAT-OF-ARMS SHIELD
"ESTABLISHED 1845"

E ROBINSON

60 Broad Street

LUDLOW

Jeweller



E V FEARNLEY

High Oustgate

YORK

Jeweller &c



LETTERING ON OUTSIDE

E W MASON

Corporation Rd

MIDDLESBROUGH

Jeweller

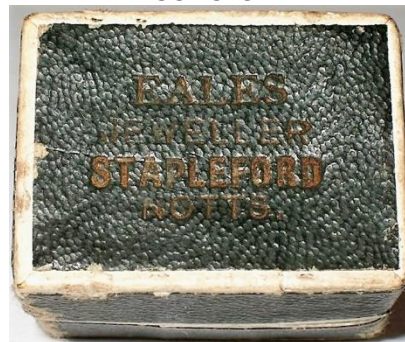


GOLD LETTERING

EALES

STAPLEFORD NOTTS

Jeweller



GOLD LETTERING
LETTERING ON OUTSIDE

EDWARD ORMES
81 Maryland Point
STRATFORD E
Jeweller &c



see also **E ORMES** (earlier)

EDWIN DAVIS LATE ALLOTT
BRADFORD



GOLD LETTERING ON OUTSIDE AND INSIDE

EUSTANCE & Co L^{TD}
Sankey St
WARRINGTON
Goldsmiths



GOLD LETTERING ON OUTSIDE
WITH A CROWN SYMBOL

EVERSHED & SON
121 Church Rd
HOVE
BRIGHTON
Goldsmiths and Jewellers



GOLD LETTERING

EVERSHED & SONS
HOVE
Jewellers



F A HILSER
Church Walk
TROWBRIDGE
Watchmaker Jeweller Horologist



GOLD LETTERING ON OUTSIDE
WITH A CROWN SYMBOL + "LATE DARRACOTT"

F BARTLE
Market Place
HECKMONDWIKE
Jeweller



F HINDS LTD
LONDON & Provinces
Jeweller



RED LETTERING
ESTD 1858

F K FISHER
Market Street
ELY



GOLD LETTERING

F J RODGERS
Victoria Street
PAIGNTON
Jeweller



F MOON & BIRKS & CO



GOLD LETTERING

F S WILSON
84 **EDGWARE RD** W {LONDON}
Jeweller

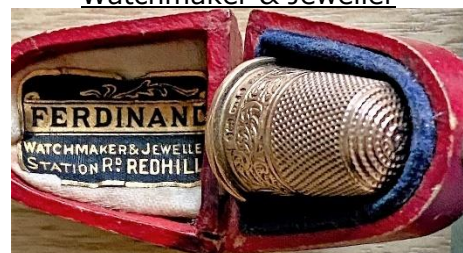


F W GIBSON
2&3 The Arcade
NEWBURY
Goldsmith & Jeweller



CELLULOID

FERDINAND
Station Rd
REDHILL
Watchmaker & Jeweller



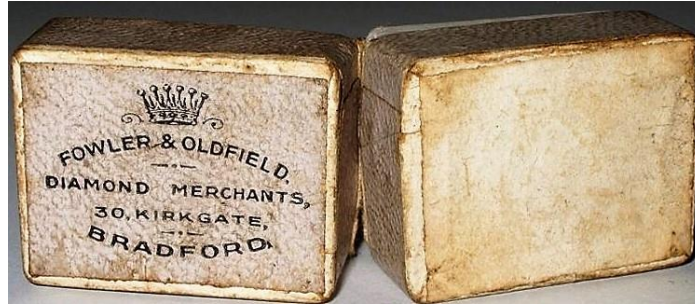
STICKER

FOWLER 7 OLDFIELD

30 Kirkgate

BRADFORD

Diamond Merchants



WITH A CROWN SYMBOL

FRED^K JOHNSON

ALTRINCHAM

Goldsmith & Diamond Merchant



G BARTLETT & SON L^{TD}

ALDERSHOT

Watchmakers Jewellers & Silversmiths



BY APPOINTMENT TO THE ADMIRALTY AND THE WAR OFFICE
WITH A CROWN SYMBOL

G C CHING

27 Tavern St

IPSWICH

Watchmaker & Jeweller



WITH A CROWN SYMBOL

G GRAHAM

21 Forrest Road

EDINBURGH

Watchmaker & Jeweller



G H CLAPHAM
414 Brixton Road
S W {LONDON}
Jeweller



INCLUDES EARLY POSTAL DISTRICT CODE

G H HUNNS
58 High Street
Wandsworth
LONDON S W
Jeweller Etc



INCLUDES EARLY POSTAL DISTRICT CODE
CELLULOID

G J WELLSTEED
89 Russell St
SOUTHSEA
Watchmaker & Jeweller



GOLD LETTERING

G JONES & SONS
68 Holloway St
LONDON N



INCLUDES EARLY POSTAL DISTRICT CODE

G KUSS & SONS
6 Northumberland St
NEWCASTLE-ON-TYNE
Jewellers &c



LETTERING ON OUTSIDE

G M'INTOSH & SON
88 South Clerk St
EDINBURGH
Watchmakers & Jewellers



WITH A CROWN SYMBOL

G W GOLDSACK

22 Suildhall st

FOLKESTONE

Watchmaker and Jeweller



WITH A CROWN SYMBOL

GARRARD & CO LTD

112 **REGENT ST W.1**

Crown Jewellers



THE GOLDSMITHS & SILVERSMITHS COMPANY LTD

GEO RHODES

3 Townhall St

SOWERBY BRIDGE

Jeweller



GEO SKEGGS

KINGSLAND

Jeweller



GEO WATTS

24 Market Street

BOLTON

Watchmaker & Jeweller



LETTERING WITHIN A BUCKLED BELT

GEORGE SMITH

3 Bath St

LEAMINGTON

Watchmaker & Jeweller



GOLD LETTERING

**The GOLDSMITHS & SILVERSMITHS
COMPANY LTD**
112 Regent St
LONDON



L: "BY APPOINTMENT TO H.M. THE KING" (ORIGINAL THIMBLE CORONATION THIMBLE 1911) WITH THEIR COMPANY LOGO
R: "BY APPOINTMENT TO THE ... "

L: interesting see note that this thimble is the original, as makers of the George V 1911 coronation thimble

GOULDING
43 George St
PLYMOUTH
Goldsmith & Optician &c



LETTERING ON OUTSIDE

H BURGESS & CO
SOUTH NORWOOD {LONDON}
Jewellers & Opticians



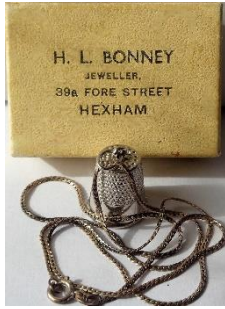
H EARLES
LONDON N E

Watch Manufacturer Jeweller &c



LETTERING WITHIN A BUCKLED BELT INCLUDES EARLY POSTAL DISTRICT CODE

H L BONNEY
39a Fore Street
HEXHAM



LETTERING ON OUTSIDE

H OWEN
937 High St
BANGOR
Jewellers



GOLD LETTERING

H SAMUEL
MANCHESTER
& **ATBOLTON**
PRESTON
& **ROCHDALE**
Jeweller



HARRIET SAMUEL (1895-) ACQUIRED J WALKER & CO IN 1895
STILL IN OPERATION IN MANCHESTER IN 2019

H SAMUEL
MANCHESTER
ATBOLTON
PRESTON
ROCHDALE
& LEICESTER
 Jeweller



STILL IN OPERATION IN MANCHESTER IN 2019

H SAMUEL LTD
 Market Street
MANCHESTER

London Branches:
 40 & 42 Powis Street Woolwich S.E
 13 High Street Islington N.1
 11 Walworth Road S.E
 22 Broadway, Stratford
 Empire & Largest Jewellers



LOGO "WITH BRANCHES ..." with an alphabetical list of 38
 "Aberdeen ...Swansea"
 COVER TITLE: H SAMUEL MANCHESTER GLASGOW LONDON ...
STILL IN OPERATION IN MANCHESTER IN 2019

H W BEDFORD
 67 **REGENT ST W**
 Watch Maker & Jeweller



GOLD LETTERING

HAMILTON & INCHES
EDINBURGH



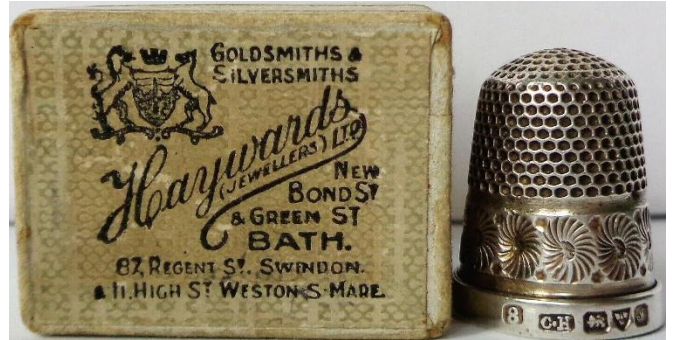
BY APPOINTMENT
ROYAL COAT-OF-ARMS
 original 1897 thimble for Queen Victoria's Jubilee

HARVEY & COMP'Y
 128 & 129 **REGENT ST**
 {LONDON}
 Goldsmiths Watch Makers



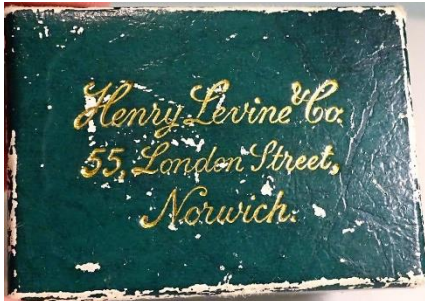
WITH A CROWN SYMBOL

HAYWARDS (Jewellers) L^{TD}
NEW BOND ST {LONDON}
 & Green St **BATH**
 82 Regent St **SWINDON**
 & 11 High St **WESTON S-MARE**
 Goldsmiths & Silversmiths



LETTERING ON OUTSIDE
 UNKNOWN COAT-OF-ARMS

HENRY LEVINE & CO
 55 London Street
NORWICH



GOLD LETTERING ON OUTSIDE

HENRY WEBB
 Public Lounge
DOUGLAS ISLE OF MAN



GOLD LETTERING ON OUTSIDE
 LETTERING WITHIN A GOLD BUCKLED BELT
 AND WITH A CROWN SYMBOL
 with triskelion symbol at centre for Isle of man
 see also: S WEBB and WEBB

HERBERT WELL
 Lord Street
LIVERPOOL



GOLD LETTERING
 CELLULOID

HESTER-CLARKE
AYLESBURY
 Country Jewellers



SILVER LETTERING
 interesting see note that this thimble is the original, as
 the maker is the same as the jeweller

HOGG & SHAW
52 Market St
MANCHESTER



GOLD LETTERING
WITH A CROWN SYMBOL

HORSTMANN & SONS
13 Union Street
BATH
Jewellers



I KIRKNESS & SONS
5 Westborough
SCARBOROUGH
Jewellers & Goldsmith



GOLD LETTERING

J & L MOLE
2 Queen St
WOLVERHAMPTON



GOLD LETTERING
WITH A CROWN SYMBOL

J C HESELTON
The Parade
BRIDLINGTON QUAY
Jeweller &c



J CALLOW & SON
2 Parliament Street
RAMSEY
Watchmakers & Jewellers



WITH A BELTED UNKNOWN SYMBOL
CELLULOID

J CAYDON
Match Street
BARNSTABLE
Jeweller &c



J D FISHER
LINCOLN
Jeweller



LETTERING WITHIN A BUCKLED BELT

J DURDEN
21 Fenchurch Street
LONDON E C



INCLUDES EARLY POSTAL DISTRICT CODE

J E BROWN
38 Herbert Rd
PLUMSTEAD {LONDON}
Watchmaker & Jeweller



J E CORNEY
57 High St
RHYL
Goldsmith Watchmaker & Jeweller



LETTERING ON OUTSIDE

J HOYLE
The Tower
BLACKPOOL
Jeweller Gold & Silversmith



interesting that there is a Blackpool placename thimble in a Blackpool case

J JEFFERIES

33 Market St
MANCHESTER
Manufacturing jeweller



J LEWIS

88 High St
RAMSGATE
at **MARGATE**
Goldsmith



GOLD LETTERING

J LUCAS

Kings Road
CHELSEA {LONDON}
Jeweller



GOLD LETTERING ON OUTSIDE

J MYERS & CO

131&133 Westminster Bridge Road
LONDON



J NELSON

BURY
Goldsmith



GOLD LETTERING

J PAXMAN

Mile End
LANDPORT
Jeweller



LETTERING ON OUTSIDE

J PERRY & SON
90 Oxford St
LONDON
Goldsmiths and Jewellers



"BUREAU DE CHANGE"
"REPAIRS"

J R ANDERSON
44 & 45 Argyle Arcade
GLASGOW
Jeweller



J S ARTHURS
NORTHAMPTON
Jeweller &c



J T & H PLETOG
9 High Street
AYR



LETTERING ON OUTSIDE

J TURNER
14 East St
BRIDPORT
Jeweller & Ophthalmic Optician



LETTERING ON OUTSIDE

J V WOODWARD
St James St
DERBY
Jeweller



GOLD LETTERING

J W BENSON
25 Old Bond St
LONDON



GOLD LETTERING
WITH PRINCE OF WALES FEATHERS SYMBOL
CROWN SYMBOL & UNKNOWN SYMBOL AT R

J W BENSON LIMITED
...
LUDGATE {LONDON}



J W JOHNSTON
The Viaduct
CARLISLE

Watchmaker and Jeweller



BLUE LETTERING

J WILD
BLACKPOOL
and High St **OLDHAM**



CELLULOID

J WILSON
55 Grey Street
& 34 New Bridge St
NEWCASTLE-ON-TYNE
Jeweller



JACKSON
Golden Clock St
Peter's St
DERBY
Jeweller



LETTERING WITHIN A CLOCKFACE

JACKSON & SON
Chapel Bar & Radford Rd
NOTTINGHAM
Jewellers



BLUE LETTERING

JAMES DUKES
12 High Street
AYLESBURY
Jeweller



GOLD LETTERING

JAMES FOWLER & SON
9 Boundary Place
LIVERPOOL
Watchmakers & Jewellers



JAMES JAY
368 Essex Rd
LONDON N
Jeweller &c



WITH A CROWN SYMBOL

JAMES MARK
97 Union Street
GLASGOW
Goldsmith



WITH A CROWN SYMBOL
CELLULOID

JAMES W PETERS
3 London Rd
LIVERPOOL
Jeweller



JAMES WALKER LTD
The **LONDON** Jeweller



BLUE LETTERING ON OUTSIDE

JAMES WALKER LTD
The **LONDON** Jewellers



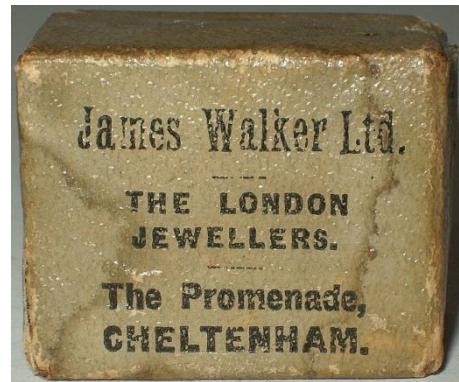
LETTERING ON OUTSIDE:
"ESTABLISHMENTS THROUGHOUT LONDON"
thimble is their advertising thimble

JAMES WALKER LTD
The London Jewellers
134 Terminus Road
EASTBOURNE
Watchmakers to the Admiralty



NAVAL COAT-OF-ARMS

JAMES WALKER LTD
The London Jewellers
The Promenade
CHELTENHAM



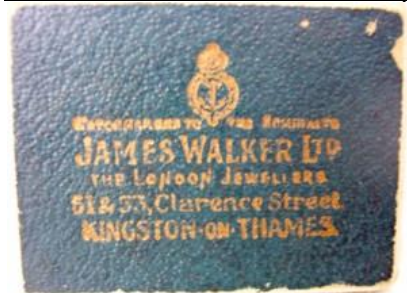
LETTERING ON OUTSIDE

JAMES WALKER LTD
The London Jewellers
LONDON & Provinces



LETTERING ON OUTSIDE

JAMES WALKER LTD
The London Jewellers
51 & 53 Clarence Street
KINGSTON-ON-THAMES
Watchmakers to the Admiralty



GOLD LETTERING ON OUTSIDE
NAVAL COAT-OF-ARMS

JAMES WEIR
25&27 Argyle St
GLASGOW
Jeweller



WITH A CROWN SYMBOL
"ESTB 1860"

JAS CHALMERS
509 Springburn Rd
GLASGOW
Jeweller &c



WITH A CROWN SYMBOL

JA^S RAMSAY
8 High St
DUNDEE
Jeweller



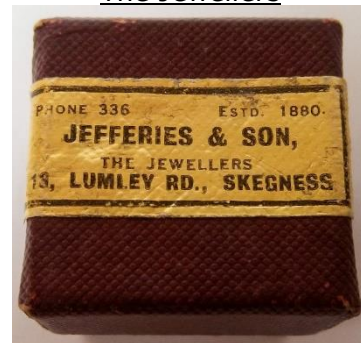
WITH A CROWN SYMBOL

JEDMONDS
Baker St
LONDON
Goldsmith & Jeweller



LETTERING WITHIN A BUCKLED BELT

JEFFERIES & SON
13 Lumley Rd
SKEGNESS
The Jewellers



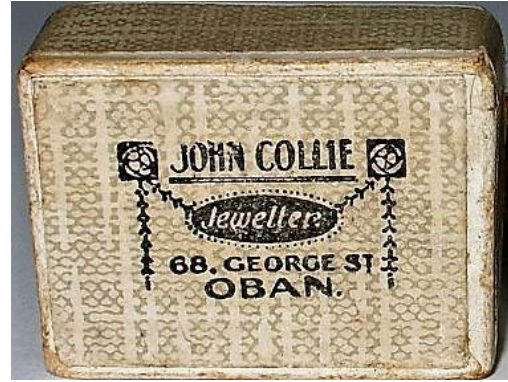
STICKER ON OUTSIDE
"PHONE 336"
"ESTD 1880"

JOHN COCKBURN
 26 George Street
RICHMOND {LONDON}
 Goldsmith & Silversmith



BLUE LETTERING
 WITH A CROWN SYMBOL

JOHN COLLIE
 68 George St
OBAN
 Jeweller



LETTERING ON OUTSIDE
 CELTIC SYMBOLS

JOHN D HARRIS
 Queen Square
BATH
 Goldsmith



GOLD LETTERING
 "BY APPOINTMENT" WITH A CROWN SYMBOL

JOHN HAMILTON & SON
 41 George St
EDINBURGH
 Jewellers



BLUE LETTERING
 "SUCCESSORS TO JONES & WALTER MARSHALL"
 LETTERING WITHIN A BLUE BUCKLED BELT

JOHN HARRISON
 14 West Cayas Pl

...
 Jeweller



GOLD LETTERING

JOHN MASON
ROTHERHAY
 and **BARNSELY**
 Watchmaker & Jeweller



LETTERING ON OUTSIDE
 WITH A CROWN SYMBOL
 "ESTAB^d 1727"

JOHN MILLINGTON
 24 High St
LINCOLN
 Watchmaker & Jeweller



GOLD LETTERING

JOHNSON
 9 **LEICESTER SQ** {LONDON}
 Goldsmith & Jeweller



this original thimble dates to 1851

JUDGE & CO
CHEAPSIDE
 Market Place
LEICESTER
 Watchmakers Jewellers & Silversmiths



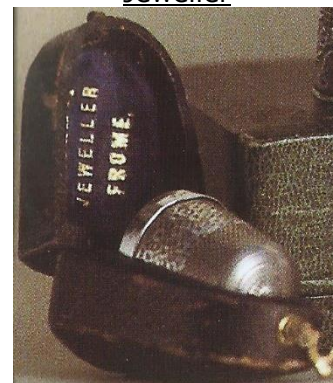
WITH A CROWN SYMBOL

K MARSDEN
 1... Market St
CLECKHEATON
 Jeweller



LETTERING ON OUTSIDE

KNIGHT
FROME
 Jeweller



GOLD LETTERING

KNIGHT & SON
NORTHAMPTON
Jewellers



L & F COLE
CAMBRIDGE
Jewellers



L BRUDER ROWELL
8 Poole Valley
BRIGHTON
Watchmaker & Jeweller



WITH A CROWN SYMBOL

L H HOBDAV & CO
13 New St
BIRMINGHAM
Watchmakers & Jewellers



GOLD LETTERING

L LOKIRR
OSWRSTRY
Jeweller etc



GOLD LETTERING

L REICH

12 Monson Rd
& 109/111 Camden Rd

TUNBRIDGE WELLS

Practical Watchmaker Jeweller & Optician



LETTERING ON OUTSIDE
"PHONE 1352"

LAMBERT

63 Queens Rd

CLIFTON {BRISTOL}



GOLD LETTERING
WITH A CROWN SYMBOL

LATIMER & SONS

143-147 Lothian Rd

EDINBURGH

Goldsmiths



GOLD LETTERING

LAW BROTHERS

282 Clapham Rd

S W {LONDON}

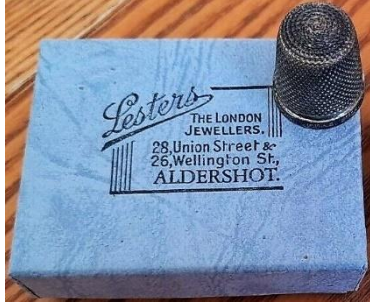
Goldsmiths Diamond Merchant



LETTERING WITHIN A BUCKLED BELT
INCLUDES EARLY POSTAL DISTRICT CODE
"ESTAB 1810"

LESTERS

28 Union Street & 26 Wellington St
ALDRSHOT
The London Jewellers



LETTERING ON OUTSIDE

M ELAM

HIGH Street
NORTHWICK
Jeweller



GOLD LETTERING

M BEAL

Market Place
SHEFFIELD
Jeweller



GOLD LETTERING

M RHODES & SON

BRADFORD
Goldsmiths



GOLD LETTERING ON OUTSIDE

MACFARLANE & SONS

GLASGOW



'STUART' TARTAN MAUCHLINEWARE

MACKAY BROS

8 High Street
DUNDEE
Jewellers



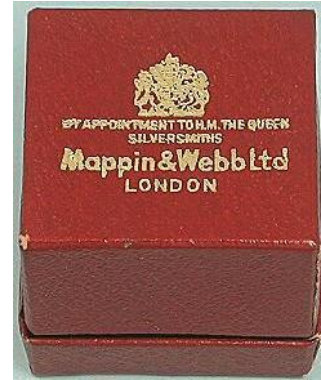
GOLD LETTERING

MAPPIN & WEBB L^{TD}
Queen Victoria Street
LONDON E C



INCLUDES EARLY POSTAL DISTRICT CODE
"BY APPOINTMENT" WITH A CROWN SYMBOL
STILL IN OPERATION IN 2019

MAPPIN & WEBB Ltd
LONDON
Silversmiths



GOLD LETTERING ON OUTSIDE
"BY APPOINTMENT TO H.M. THE QUEEN" WITH COAT-OF-ARMS
box contains their thimble for 1981 wedding of Prince Charles and Lady Diana Spencer

MARCH & CO
BIRMINGHAM



MARTIN & C^O
Promenade
CHELTENHAM
Watchmakers & Silversmiths



WITH A CROWN SYMBOL
STILL IN OPERATION IN 2019

MUIR & SONS
182 Argyle Street
GLASGOW
Watchmakers & Jeweller



N ST J PAINT & SONS
GUERNSEY



GOLD LETTERING ON OUTSIDE

OLDFIELD'S LTD
 Old Post Office Place
 Church St
LIVERPOOL



WITH A CROWN SYMBOL

OWEN H HUGHES
 67 High Street
BALA
 Jeweller



LETTERING ON OUTSIDE

P J CORFIELD LTD
GOLDERS GREEN N W 8
 & **MILL HILL N W 7** {LONDON}



P SUTTON
LOWER EDMONTON
 Watchmaker & Jeweller



WITH A CROWN SYMBOL

PEARCE & SONS
HUDDERSFIELD



PEARCE & SONS
LEEDS
 & **HUDDERSFIELD**
 Goldsmiths



GOLD LETTERING
 WITH A CROWN SYMBOL

PEARCE & STEER
 5 South Street
GREENWICH SE {LONDON}



INCLUDES EARLY POSTAL DISTRICT CODE

PENLINGTON & BATTY
LIVERPOOL
& MANCHESTER



GOLD LETTERING
 WITH A CROWN SYMBOL

PETER DEBERT
 10 Church Street
LIVERPOOL
 Wholesale Jeweller



GOLD LETTERING
 "ESTD OWNED 1885"

PHILLIPS'
 57 Lime St
LIVERPOOL
 Jeweller



L: BLUE LETTERING

PRINSKY BROS
SOUTH SHIELDS
 & 67 Martlepool **WEST MARTLEPOOL**
 & **STOCKTON**
 Jewellers



GOLD LETTERING
 WITH A CROWN SYMBOL

POWELL JAMES & CO
 5 7 & 9 **REGENT STREET** {LONDON}



R & A CUFFLIN
ISLINGTON GREEN {LONDON}
 Watchmakers & Jewellers



LETTERING WITHIN A BUCKLED BELT
 "ESTD 1837"

R A JONES & SON
 High Street
SOUTHEND ON SEA
 Diamond Merchants



BLUE LETTERING ON OUTSIDE
 "THE COUNTY JEWELLERS"
 WITH ILLEGIBLE SYMBOL

R DRUMMOND & SON
STIRLING
 Jeweller



GOLD LETTERING
 WITH A CROWN SYMBOL

R L TRIGGS
 The Cash
CLAPTON {LONDON}
 Jeweller



R S ROWELL
OXFORD
 Watchmaker & Jeweller



WITH A CROWN SYMBOL
STILL IN OPERATION IN 2019 AS ROWELL OF OXFORD

R SALSBUURY & SONS
 336 High St
CHISWICK
 Goldsmiths



LETTERING ON OUTSIDE

R VAUGHAN
 80 Wells Rd
BRISTOL



GOLD LETTERING

R W SWIFT
 2 High St
EALING {LONDON}
 Jeweller &c



RALPH W READ
 52 Linthorpe Rd
MIDDLESBROUGH
 and **N COVENTRY**
 Watch Manufacturer Diamond Merchant & Optician



LETTERING ON OUTSIDE - OTHER DETAILS OBSCURED

RICHARD SMITH & SON
 5 Newboro
SCARBOROUGH
 Branch
 4 South St **SOUTH CLIFF**
 Watchmakers & Jewellers



LETTERING ON OUTSIDE
 WITH A CROWN SYMBOL

RICKETT
OXFORD ST {LONDON}
 Goldsmith



GOLD LETTERING
 WITH A CROWN SYMBOL

ROBERT SAWYERS
 8 Maitland St
EDINBURGH
 Goldsmith & Jeweller



GOLD LETTERING
 WITH A CROWN SYMBOL
 "FROM HAMILTON & INCHES"

S NICHOLL
 35 Bridge St
BELFAST
 Watchmaker & Jeweller



GOLD LETTERING

S REID
362 Oxford St
W {LONDON}



INCLUDES EARLY POSTAL DISTRICT CODE

S REID
360 Oxford St
W {LONDON}



GOLD LETTERING
INCLUDES EARLY POSTAL DISTRICT CODE
DIFFERENT STREET NUMBER

S SMITH
151 & 153 NEWINGTON CAUSEWAY
{LONDON}
Jeweller &c



WITH A CROWN SYMBOL

S SMITH
151 & 153 NEWINGTON CAUSEWAY
S.E {LONDON}
Jeweller & Watchmaker



INCLUDES EARLY POSTAL DISTRICT CODE
LETTERING WITHIN A BUCKLED BELT

S WEBB
Public Lounge
DOUGLAS



GOLD LETTERING
see also: WEBB and HENRY WEBB



SAUNDERS



GOLD LETTERING

SHEARD
184 High St
OXFORD

Heraldic Engraver Watchmaker & Jeweller



LETTERING WITHIN A BUCKLED BELT

SMITH BROTHERS
2 Market St
ROTHERHAM

Watchmakers & Jewellers



GOLD LETTERING ON OUTSIDE

SORLEY
(late Jaffrey)
GLASGOW



WITH A CROWN SYMBOL
GOLD LETTERING

STEER
DERBY



GOLD LETTERING

STEWART DAWSON & COMPANY LIMITED

Regent Street

W {LONDON}



INCLUDES EARLY POSTAL DISTRICT CODE
see also: STEWART DAWSON in Australian Jewellers
section

STIER & SON
11 New Bond St
BATH
Jewellers



The SUSSEX GOLD & SILVERSMITH COMPANY
Lower Pavilion Bldgs
BRIGHTON



GOLD LETTERING
WITH A CROWN SYMBOL WITH SUCC^{ER} TO E BRIGHT

SYMONS
10 Duke St
TAVISTOCK
Jeweller etc



WITH A CROWN SYMBOL

T & G ALLAN
18 & 20 Blakett Street
NEWCASTLE-ON-TYNE



T & G O'MOSES
BISHOP AUCKLAND
& **SPENNYMOOR**
Watchmakers and Jewellers



"SINCE 1837"

T & J PERTH
4 **REGENT STREET** {LONDON}
Goldsmiths & Jewellers



GOLD LETTERING
WITH A CROWN SYMBOL

T A BARRETT
40 Edgware Road
LONDON
Watch Maker & Jeweller



BLUE LETTERING
LETTERING WITHIN A BLUE BUCKLED BELT

T A KISTLER
REDRUTH
Jeweller & C crown



GOLD LETTERING
WITH A CROWN SYMBOL

T REED & C^o
CAMBRIDGE



GOLD LETTERING
WITH A CROWN SYMBOL

T S LEE
81 Gallowtree Gate
LEICESTER
Jeweller & c



T S MACPHERSON
67 High Street
BERWICK-ON-TWEED
Jeweller



GOLD LETTERING

TERRY & C^o
corner of Cross St & King St
MANCHESTER
Goldsmiths & Silversmiths



TESSIERS L^{TD}
26 Bond St
LONDON



STILL IN OPERATION IN 2019

THOS G PARK
136 High Street
DUMFRIES
Jeweller & Optician



LETTERING ON OUTSIDE
"F.S.M.C. D.B.O.A (LONDON)"
(his optician's qualifications)

THOS LARGE
18 Clumber Street
NOTTINGHAM
Jeweller



LETTERING ON OUTSIDE

THO^S SMITH
257 Seven Sisters Rd
close to **FINSBURY PARK STATION**
Goldsmith & Jeweller



GOLD LETTERING
WITH A CROWN SYMBOL

TOYE KENNING & SPENCER LTD
LONDON

Suppliers of Gold and Silver Laces, Insignia and Embroidery



"BY APPOINTMENT TO HER LATE MAJESTY THE QUEEN ..."
ROYAL COAT-OF-ARMS
STILL IN OPERATION IN 2020

TREVOR TOWNER

12 High Street
PETERSFIELD
Hampshire
Goldsmith Jeweller



STICKER WITH BLUE LETTERING
signature 'TT' - case contains his original thimble

TUSON

40 Commercial Rd
BOURNEMOUTH
Jeweller & Silversmith



WITH A CROWN SYMBOL

W A BROWN

Broad Street
DEAL
Jeweller



GOLD LETTERING

W B CULL

84 High St
DORKING

Watchmaker Jeweller & Optician



GOLD LETTERING ON OUTSIDE

W BISHOP & SON

TROWBRIDGE
Watchmakers & Jewellers



LETTERING WITHIN A BUCKLED BELT

W C HAYWARD
SURBITON {LONDON}
 Jeweller



W CARTER & SONS
 3&5 Minster St
SALISBURY
 and High St **AMESBURY**
 Watchmakers & Jeweller



UNIDENTIFIED SYMBOLS/MARKS

W CRAMBROOK
 London House
SOUTHAMPTON
 Goldsmith Jeweller Watchmaker & Optician



BUILDING SYMBOL OF LONDON HOUSE

W E RAYMONT
 20 Fore Street
BRIXHAM
 Jeweller &c



BLUE LETTERING ON OUTSIDE
 WITH A CROWN SYMBOL

W ELLIS
 94 High St
 Notting Hill
LONDON W



INCLUDES EARLY POSTAL DISTRICT CODE

W G CAMELL
 Bridge St (near Post Office)
NUNEATON
 and at **HALIFAX**
 & **GT YARMOUTH**
 Manufacturers and Jewellers



W GABRIEL
24 & 25 **BISHOPSGATE ST**
within {LONDON}
Goldsmith and Jeweller



LETTERING WITHIN A BUCKLED BELT

W H POINTON
DOUGLAS
Jeweller



GOLD LETTERING

WH SMITH DBHJ
205 St George Rd
BOLTON
Watchmaker and Jeweller



LETTERING ON OUTSIDE

W HARWOOD
51 High St
LITTLEHAMPTON
Watchmaker Jeweller & Optician



W H HOWE
SUDBURY
Jeweller



BLUE LETTERING

W H WOOD
87 New St
BIRMINGHAM
Jeweller



W J FLETCHER
11 Royal Avenue
BELFAST
Jeweller



W KIBBLE

22 Gracechurch St
CITY {LONDON}
Watch Maker Jeweller &c



LETTERING WITHIN A BUCKLED BELT

W M POTTS & SONS
LEEDS
and at **NEWCASTLE-ON-TYNE**
Jewellers



W O STEVENS
16 ... hall St
GLASGOW
Jeweller



W PEARSALL
9 New St
BIRMINGHAM



GOLD LETTERING

W PICKERING
ATHERSTONE
Jeweller



GOLD LETTERING

W PYKE & SON LTD
BIRKENHEAD
Watchmakers to the Admiralty



LETTERING ON OUTSIDE
NAVAL COAT-OF-ARMS

W R HOLMES LTD
CHEPSTOW
& **LYDNEY**
Jewellers & Opticians



LETTERING ON OUTSIDE
"D.B.O.A F.I.Q."
(his optician's qualifications)

W SHARP
BROMLEY
KENT
Goldsmith



W STANLEYHIRST
144 Norfolk St
KINGS LYNN
Jeweller



LETTERING ON OUTSIDE
GOLD LETTERING

W T STORY
244 Dalton Rd
BARROW
Jeweller &c



GOLD LETTERING

W WILLIAMS
29 Castle Street
SWANSEA
Jeweller etc



W WRIGHT LTD
 BRIGHTON
 EASTBOURNE
 BOURNEMOUTH
 BIRMINGHAM
 MANCHESTER
 LIVERPOOL
 LLANDUDNO



"EST 1848"
 CELLULOID

WAGHORN BROS
 CROYDON {LONDON}
 Watchmaker & Jeweller



LETTERING ON OUTSIDE

WAINWRIGHT
 ORMSKIRK



GOLD LETTERING ON OUTSIDE

WALES & M^CCULLOCH
 Cheapside
 LONDON
 Goldsmiths &c



LETTERING WITHIN A BUCKLED BELT

WALLACE ALLAN
 4 Newmarket St
 AYR



LETTERING ON OUTSIDE
 STILL IN OPERATION IN 2019

WALTER SINCLAIR
 Newington Causeway
 S E {LONDON}
 Jeweller & Diamond Merchant



INCLUDES EARLY POSTAL DISTRICT CODE
 LETTERING WITHIN A BUCKLED BELT

WALTER JONES
188 Sloane Street
SW {LONDON}



INCLUDES EARLY POSTAL DISTRICT CODE
GOLD LETTERING

WALTER WYATT
BOURNEMOUTH
Goldsmith



WITH A CROWN SYMBOL

WEBB
DOUGLAS



GOLD LETTERING
WITH TRESKELION SYMBOL FOR ISLE OF MAN
see also: S WEBB and HARRY WEBB

WHITE & HALTES
PONTYPOOL
Jeweller



GOLD LETTERING

WILLIAM ADAM

7 Low St
BANFF
Watchmaker Jeweller & Optician



BLUE LETTERING

WILLIAM PEARCE
6&7 Bridge St
STRATFORD-ON-AVON
Goldsmith & Jeweller



UNKNOWN COAT-OF-ARMS

WILLIAM READ
 Royal Parade
 London Rd
CROYDON {LONDON}
 Watchmaker and Jeweller



BLUE LETTERING ON OUTSIDE

WILLIAM TAYLOR
 209 Broad St
PENDLETON
 Watchmaker & Jeweller



WITH A CROWN SYMBOL

Wm COLLIS
 19 Lowther St
WHITEHAVEN
 Jeweller ETO



WM MARSHALL
 29 High St
GRANTHAM
 Jeweller & r



WOOD BROS
 67 New Street
BIRMINGHAM
 Jewellers



WOODRIFF
 5 High Street
MARGATE
 Jeweller



LETTERING WITHIN A BUCKLED BELT

WOODS AND SONS
WARRINGTON
Goldsmiths



WITH A CROWN SYMBOL

YOUNG'S
LONDON
Diamonds & Watches



SILVER LETTERING ON OUTSIDE
WITH THE JEWELLERS' LOGO

American Jewellers

where most of the lettering in on the outer lid – which may be a cheaper option

A B MITCHELL
THOMPSON CONN
 Jeweler & Optometrist



LETTERING ON OUTSIDE

AMUNDSEN AND PEARSON
ESCANABA MICHIGAN
 Quality Jewelers



STICKER ON OUTSIDE

AUGUSTUS RHODS
 20 East King St
LANCASTER PA
 Jeweler



UNKNOWN LOGO

B U TAPKEN
 cor Church & Neilson Sts
NEW BRUNSWICK NJ
 Jeweler



BAGLEY AND COMPANY
DULUTH



LETTERING ON OUTSIDE

BENTON'S
SEATTLE
 University Jewelers



BLUE LETTERING ON OUTSIDE

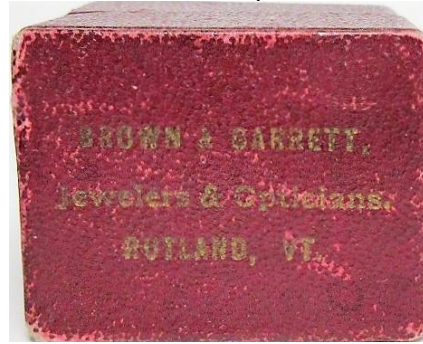
BIGELOW KENNARD & CO LTD
BOSTON MASS



GOLD LETTERING
(1824-1970s)

Brown & Barrett
RUTLAND VA

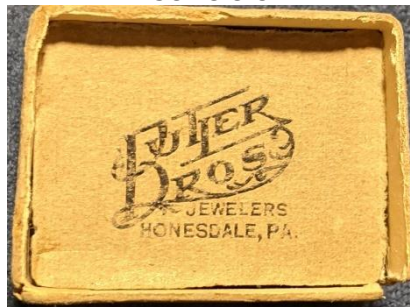
Jewelers & Opticians



GOLD LETTERING
LETTERING ON OUTSIDE

BUTLER BROS
HONESDALE PA

Jewelers



LETTERING ON OUTSIDE

C L BRYANT
DANBURY CONN

Jeweler



C S SHERWOOD INCORPORATED
PORTSMOUTH VA

Jewelers



BLUE LETTERING ON OUTSIDE
"S" LOGO

CARTER BROTHERS COMPANY
PORTLAND MAINE
Jewelers



CHAPIN & O'BRIEN
330 Main St
WORCESTER MASS
Jewelers



CROSBY AND NORSE
BOSTON



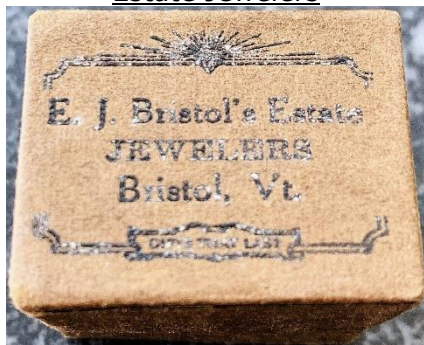
LETTERING WITHIN A BUCKLED BELT

DANIEL LOW & CO
SALEM MASS



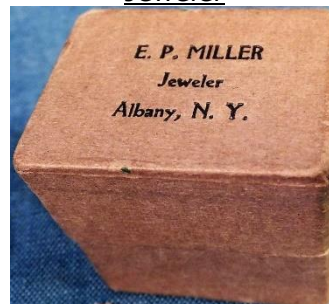
LETTERING ON OUTSIDE
(1874-1995)

E J BRISTOL'S
BRISTOL VT
Estate Jewelers



LETTERING ON OUTSIDE:
CITY'S ...TRUST

E P MILLER
ALBANY NY
Jeweler



LETTERING ON OUTSIDE

FENTON B FLEMING

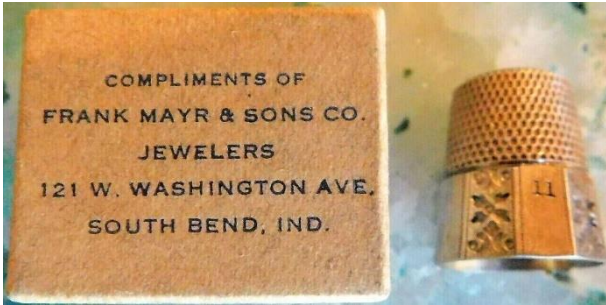
The Jewel Shop
1137-O-Street
LINCOLN NEBR



BLUE LETTERING ON OUTSIDE
(1915-1934)

FRANK MAYR & SONS CO

121 W. Washington Ave
SOUTH BEND IND
Jewelers



LETTERING ON OUTSIDE:
COMPLIMENTS OF

GEO N CONKLIN

MARQUETTE MICH
Jeweler



LETTERING ON OUTSIDE

H T JARECKI

ERIE PA



HALL BLACK & CO

Broadway
NEW YORK



LETTERING WITHIN A BUCKLED BELT

HARDY & CO
SEATTLE
 Jewelers



HARRIS & SHAFER

[placename is obscured but there was a jeweller of this name in Washington]



LETTERING IN GOLD ON OUTSIDE
 CYLINDRICAL BOX

HARRY N CLARK
SYRACUSE NY
 Jeweler



LETTERING ON OUTSIDE

J B DICKEY
NEWTON KANS



LETTERING ON OUTSIDE
 b&w photo: J Sapone

J B HUDSON CO
MINNEAPOLIS
 Jewelers



GOLD LETTERING ON OUTSIDE
 LION RAMPANT

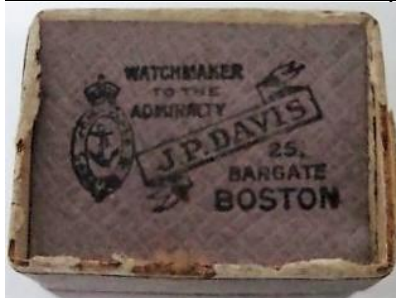
J LINZ & BRO
SHERMAN TEX
 Jewelers



LETTERING ON OUTSIDE

J P DAVIS
 25 Bargate
BOSTON

Watchmaker to the Admiralty



LETTERING ON OUTSIDE
 UNITED STATES NAVY COAT-OF-ARMS

JACOBS JEWELERS
 50 years in JACKSONVILLE



BLUE LETTERING ON OUTSIDE AND INSIDE

JOHN WANAMAKER
NEW YORK
PHILADELPHIA
PARIS

Jewelers Silversmiths



GOLD LETTERING ON OUTSIDE
photo: G Ebersole

JOHN WANAMAKER
PHILADELPHIA
NEW YORK
PARIS
LONDON



LETTERING ON OUTSIDE
photo: G Ebersole

L H ROWE & CO
DAYTONA FLORIDA
Jewelers



WITH ALLIGATOR
thimble's alligator matches the box

L M BARNES
NORTH ADAMS MASS
Jeweler



OLD LETTERING ON OUTSIDE
INCLUDES A SPARKLING DIAMOND RING DRAWING

LYNCH & SMITH
394 High Street
HOLYOKE MASS
Jewelers



M F DOERING
ANNISTON ALA
Jeweler



TRADEMARK

MARSHALL FIELD & COMPANY
CHICAGO



BLUE LETTERING ON OUTSIDE

MARSHALL FIELD & COMPANY
CHICAGO



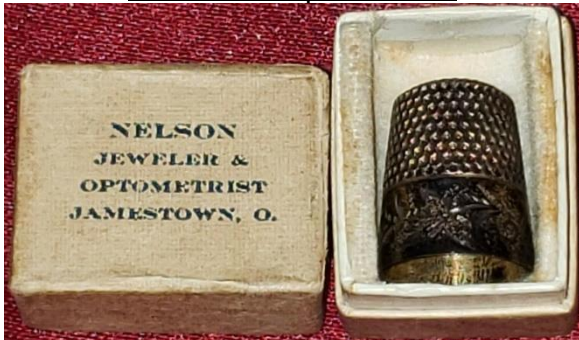
GOLD LETTERING ON OUTSIDE
(DEPARTMENT STORE 1852-)
STILL IN OPERATION IN 2019

MAYER & KAMPS
808 College Ave
APPLETON WIS
Leading Jewelers



GOLD LETTERING
(1889 to 1929)

NELSON
JAMESTOWN O
Jeweler & Optometrist



from **OTTO JUHL**
ROCK ISLAND ILL
Jeweler



STICKER ON OUTSIDE

PALMERS & BACHELDERS

BOSTON
Jewellers
(English spelling)



(1854-1860)

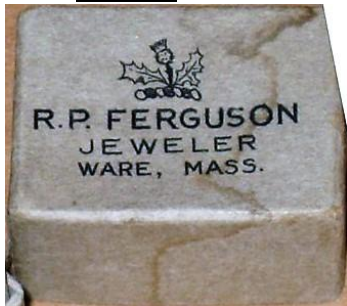
PARKROGER



LETTERING ON INSIDE AND OUTSIDE

R P FERGUSON

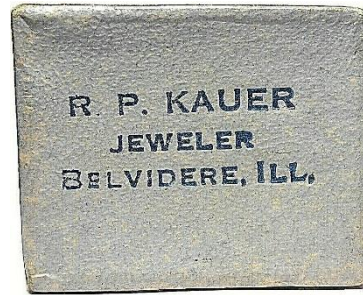
WARE MASS
Jeweler thistle



WITH THISTLE
LETTERING ON OUTSIDE

R P KAUER

BELVIDERE ILL
Jeweler



BLUE LETTERING ON OUTSIDE
ORIGINALLY IN CHICAGO

ROWLANDS

ALBANY



S FRIEDLANDER & SON

1300 Second Ave OOP University
SEATTLE WASH
Diamond Merchants



BLUE LETTERING ON OUTSIDE
COAT-OF-ARMS
ESTABLISHED 1886



SAM'L H KIRBY & SONS INC
NEW HAVEN CONN
jewelers



LETTERING ON OUTSIDE

SHANER & CO
ASTORIA ORE



BLUE LETTERING
THE STORE OF QUALITY

SHREVE CRUMP & LOW
BOSTON



LETTERING WITHIN A BUCKLED BELT

SIBLEY LINDSAY & CURR CO
ROCHESTER NY



LETTERING ON OUTSIDE
DEPARTMENT STORE
CLOSED 1985

THE L C HENRICHSON & CO
PORTLAND ORE



THOMAS M HANNAH
BELVIDERE ILL
Jeweler



LETTERING ON OUTSIDE

TIFFANY & CO
Fifth Avenue
NEW YORK
PARIS
LONDON



GOLD LETTERING ON OUTSIDE
STILL IN OPERATION IN 2019

TIFFANY & CO
NEW YORK



BLUE LETTERING
STILL IN OPERATION IN 2019

TIFFANY & CO
UNION SQUARE [NEW YORK]



GOLD LETTERING

TIFFANY & CO
NEW YORK
Rue L'Opera
PARIS

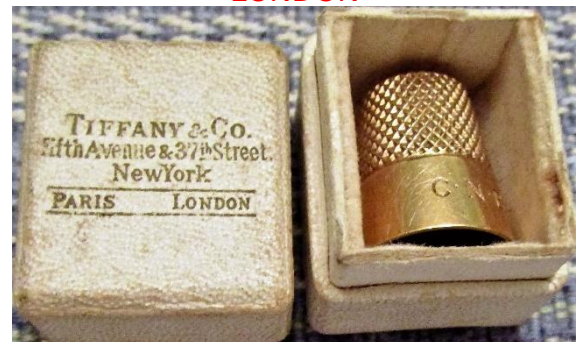


GOLD LETTERING
STILL IN OPERATION IN 2019

TIFFANY & CO
550 **BROADWAY** [NEW YORK]



TIFFANY & CO
Fifth Avenue & 37th Street
NEW YORK
PARIS
LONDON



GOLD LETTERING ON OUTSIDE
STILL IN OPERATION IN 2019

TOBIN & GANHAM
 522 Southside Square
 SPRINGFIELD ILL
 Jewelers & Opticians



LETTERING ON OUTSIDE
 TRADEMARK

TRUE BROS
 408 Main St
 SPRINGFIELD MASS



LETTERING ON OUTSIDE
 WITH A CLOCK FACE SYMBOL

VIVIAN W HILLS
 Opera House Block
 NORWAY ME
 Jeweler and Optometrist



W F HACKETT
 ROCHELLS ILL
 Jeweler



LETTERING ON OUTSIDE

WENTZ
 SHARON PA



LETTERING ON OUTSIDE
 THE W LOGO HAS BEEN DAMAGED ON THIS BOX

WHITE and WESLEY
 PHOENIX ARIZ
 Diamonds ...



THERE SEEMS TO BE ADDITIONAL LETTERING WITHIN THE
 LOGO

WILMOT & RICHMOND
 SAVANNAH GA



GOLD LETTERING ON OUTSIDE

Australian Jewellers

AMOS CORBETT

Leichhardt St

WAVERLEY {MELBOURNE}



b&w image

ANTHONY HORDEN & SONS

SYDNEY N S W

Haymarket (Only)



LETTERING ON OUTSIDE
(1869-1950 IN THIS LOCATION)

ANTHONY HORDEN & SONS

Palace Emporium

SYDNEY



LETTERING ON OUTSIDE
TRADEMARK OF TREE
(1869-1950 IN THIS LOCATION)

BUDGEN
 11 Rundle St
ADELAIDE
 Jeweller



WITH A CROWN SYMBOL
 "MADE IN ENGLAND"
 (BUDGEN IN OPERATION 1908-1939)

C JENSEN
TENTERFIELD {NSW}
 Watchmaker & Jeweller



LETTERING ON OUTSIDE
 (JEWELLER WORKED HERE BETWEEN 1901 AND 1929)

CARIS BROS
 London
 &
COOLGARDIE
 W A



b&w image

CHAS P WILLS
PETERHEAD {SOUTH AUSTRALIA}
 Jeweller & c

no photo

DUNKLINGS
 317 Bourke St
COLLINS ST {MELBOURNE}
 Jewellers and Watchmakers

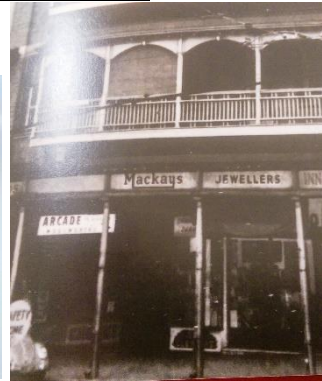


BLUE LETTERING ON OUTSIDE
STILL IN OPERATION IN 2019

R: store in 1901
 see also: W DUNKLING



D MACKAY & CO
 Queen St
 opp GPO **BRISBANE**
 and at **CAIRNS N Q**
 Watchmakers & Jewellers



(DAVID MACKAY OPERATED 1884-CLOSED IN 1980s)

CELLULOID

FAIRFAX & ROBERTS Ltd
 Hunter Street
SYDNEY
 Jewellers Opticians Watchmakers



"MADE IN ENGLAND"
 "VICE REGAL JEWELLERS"
STILL IN OPERATION IN 2019
 (1858-)

FLAVELLE BROS & ROBERTS
 LONDON
SYDNEY and
BRISBANE



GOLD LETTERING ON OUTSIDE
 (SYDNEY STORE 1869-1887 - BRISBANE 1870-1891)

FLAVELLE BROS & ROBERTS
SYDNEY BRISBANE



GOLD LETTERING
 (SYDNEY STORE 1869-1887 - BRISBANE 1870-1891)

FLAVELLE BROS & ROBERTS
SYDNEY BRISBANE



GOLD LETTERING WITHIN RIBBONING

FLAVELLE BROTHERS LTD
SYDNEY & LONDON



GOLD LETTERING
 WITH A CROWN SYMBOL
 "ENGLISH MADE CASE"
 "ESTD 1846"

This date is for their London store

FLAVELLE SANKEY & ROBERTS LTD
SYDNEY BRISBANE
ROCKHAMPTON & LISMORE



(THESE JEWELLERS ONLY OPENED THEIR LISMORE BRANCH IN 1922)

THE GOLDSMITHS HALL CO
 139 Queen Street
BRISBANE
 Jewellers



GOLD LETTERING
 (1885-1902)

GUNTER'S
 237 Bourke St
MELBOURNE



LETTERING ON OUTSIDE
 (GUNTER'S ONLY EXISTED AT THIS ADDRESS 1906-1915)

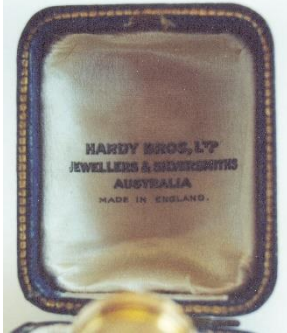
HARDY BROS LTD
 13 Hunter St
SYDNEY and
 118 Queen St
BRISBANE



WITH A CROWN SYMBOL
 "MADE IN ENGLAND"
 (1833-)

STILL IN OPERATION IN 2019

HARDY BROS LTD
AUSTRALIA
Jewellers & Silversmiths



"MADE IN ENGLAND"
STILL IN OPERATION IN 2019

HARRY YOUNG
524 George St
SYDNEY
"My Jeweller"



(IN OPERATION AT THIS ADDRESS 1903-1950s)

b&w image

J C TAYLOR Pty Ltd
704 Hay Street
PERTH WA

no photo

BLUE LETTERING ON OUTSIDE

J L SAVITZ
Balmoral
SYDNEY

no photo

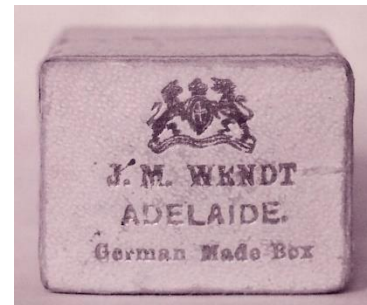
J M WENDT
ADELAIDE



GOLD LETTERING ON OUTSIDE
"FOREIGN MADE BOX"
(1884-)

STILL IN OPERATION IN 2019

J M WENDT
ADELAIDE

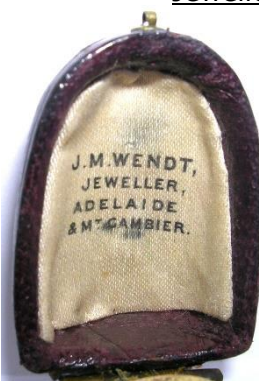


LETTERING ON OUTSIDE
"GERMAN MADE BOX"
UNKNOWN COAT-OF-ARMS
(1884-)

STILL IN OPERATION IN 2019

b&w image

J M WENDT
ADELAIDE
& **M^T GAMBIER**
Jeweller



(1884-)

STILL IN OPERATION IN 2019

**NEWMAN'S
MELBOURNE**



STICKER ON INSIDE
WITH A CROWN SYMBOL
(1859-1939)

PROUDS LTD
cor Pitt & King Sts
SYDNEY
Watchmakers & Jewellers

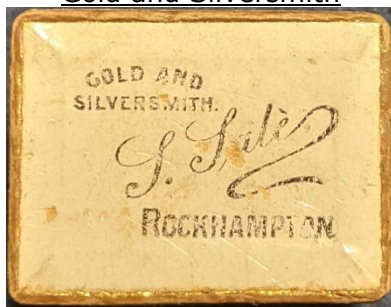


(1905 -)
STILL IN OPERATION IN 2019
b&w image

**PALFREY
MELBOURNE**
Jeweller & Silversmith



S SALE
ROCKHAMPTON {QUEENSLAND}
Gold and Silversmith



LETTERING ON OUTSIDE

STEVENSON BROS
20 Rundle St
ADELAIDE
Watchmakers & Jewellers



WITH A CROWN SYMBOL
"MADE IN ENGLAND"
(IN OPERATION AT THIS ADDRESS 1890s-1956)
b&w image

STEWART DAWSON & CO
SIDNEY [sic] **MELBOURNE AUCKLAND**
 and **PERTH**
English Watch Man'rs London
Diamond Merchants Manufacturing Jewellers



(c.1885-1957)

L: b&w image - R: colour

STEWART DAWSON & CO (AUS LTD)
 Strand Corner
 412 George St
SYDNEY
Jewellers Silversmiths



STICKER ON INSIDE
 (c.1885-1957)

TAYLOR & SHARP
 54 Market St & 64 Elizabeth St
HOBART
Manufacturing Jewellers



GOLD LETTERING ON OUTSIDE
 CLOSED 1884

W DUNKLING
 317 Bourke St
MELBOURNE
Watchmaker & Jeweller



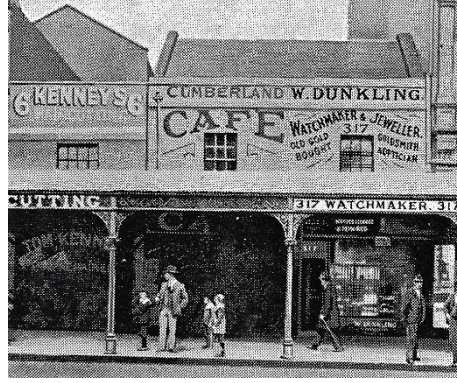
GOLD LETTERING ON OUTSIDE
STILL IN OPERATION IN 2019
 see also: DUNKLINGS

W DUNKLING

317 Bourke St

MELBOURNE

Watchmaker & Jeweller



GOLD LETTERING

STILL IN OPERATION IN 2019

R: 1864 store

see also: DUNKLINGS

W STOTT

144 Moorabool

GEELONG {VICTORIA}

Watchmaker & Jeweller



GOLD LETTERING ON OUTSIDE

European Jewellers

where most of the lettering in on the outer lid – which may be a cheaper option
all the French boxes have a distinctive shape

A ARGOUGES

S^T BONNET LE CHATEAU {FRANCE}
Horlogerie Bijouterie Orfeverrie



STICKER ON OUTSIDE

A BACHNER

TROPPAU {AUSTRIA}
Gold Silber Jewelen



STICKER ON OUTER BASE
"CHRRN HANDLUNG"
"ZWISCHEN MÄRKTEN n. 321"

A BIGOT

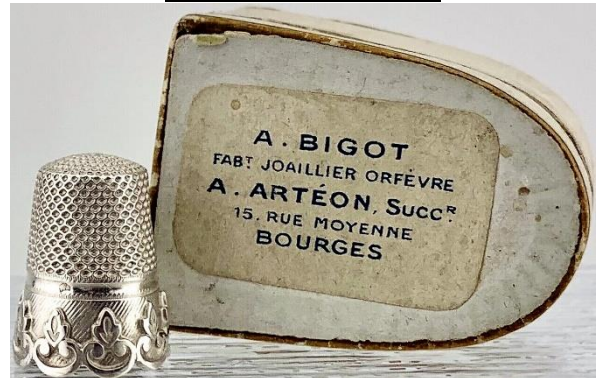
BOURGES {FRANCE}
F^t Joailler



LETTERING ON OUTSIDE

A BIGOT

A ARTÉON Succ^R
15 Rue Moyenne
BOURGES {FRANCE}
Fab^t Joaillier Orfevre



LETTERING ON OUTSIDE

A CROCHET

29 Rue Tour Carree
CHERBOURG {FRANCE}
Horlogerie Bijouterie



LETTERING ON OUTSIDE
CLOCK FACE IN STAR

A HALBERSTADTS Eftf.

Østergade 4

KJOPENHAVN {DENMARK}

Juveler



GOLD LETTERING ON OUTSIDE
STILL IN OPERATION IN 2019

A L'HIRONDELLE

Palais Royal

Galerie Montpensier 56 57

PARIS {FRANCE}

A A Carette Bijoutier



LETTERING ON OUTSIDE

BIRD IN FLIGHT TRADEMARK

with original thimble by this French thimble maker

A MONNERY

Rue de Lyon

BOEN S LIGNON {FRANCE}

Horlogerie Bijouterie Orfevriere



STICKER ON OUTSIDE

A ORBANN

Rue des Marchands

et Petite Rue des Augustins

COLMAR {FRANCE}

Bijoutier-Orfèvre



STICKER ON OUTSIDE

A SCHILLING

Halberstadtstr 10E

OSCHERSLEBEN {GERMANY}

Übern Gold- u Silberwaren Pptik



GOLD LETTERING ON OUTSIDE

TELEFON 130

ALBERT BRÜGGEMANN

No 36 Hütten Chaussee No ...

THALE A/HARZ {GERMANY}

Uhrmacher n. Goldarbeit



LETTERING ON OUTSIDE

ARISTIDE BOUCICAUT

Au Bon Marché
PARIS {FRANCE}



STICKER ON OUTSIDE

B TAPPE

BURGDORF i H {GERMANY}
Goldschmied



STICKER

BENNETTS

18 Torvet
BERGEN
NORGE

Kgl. Løngelsk Hofleverandør



LETTERING ON OUTSIDE – REPEATED ON INSIDE LID
ROYAL COAT-OF-ARMS

C BERGSTRÖM

Folkets Hus
ÖREBRO {SWEDEN}
Guldsmedsaffär



GOLD LETTERING ON OUTSIDE
TEL 4279

C ELLERTSEN

14 Torvet 11
BERGEN {NORWAY}
Guldsmed & Juveler Forretning



LETTERING ON OUTSIDE

C OJANGUREN

INTERLAKEN {SWITZERLAND}
Bijouterie Espagnole



STICKER ON OUTSIDE

C P TONING

Markt 43

DELFT {NETHERLANDS}

Voorstraat 275

DORDRECHT



STICKER

BOTH CITIES HAVE **TEL** NOS ON LABEL

CARL STAUFERT

GÖPPINGEN {GERMANY}

Juwelier



STICKER

CECCARELLI et (?)

Ponte Vecchio

FIRENZE {ITALY}



CECCARELLI et (?)

Ponte Vecchio

FIRENZE {ITALY}

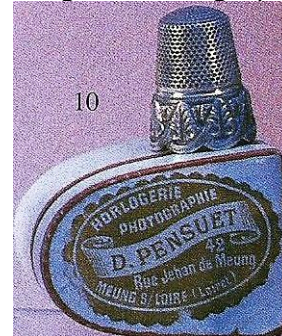


D PENSUET

42 Rue Jehan de Meung

MEUNG S/LOIRE (Loiret) {FRANCE}

Horlogerie Photographie



STICKER ON OUTSIDE

D SIMONNET
VITTEAUX
 (COTE D'OR){FRANCE}
 Horlogerie Bijouterie



GOLD LETTERING ON OUTSIDE
 ... "DE L'ECOLE NATIONALE D'HORLOGERIE"

DAVID ANDERSEN
OSLO {NORWAY}



LETTERING ON OUTSIDE
 L BLUE - R GREY

DAVID ANDERSEN
OSLO {NORWAY}



LETTERING ON OUTSIDE
 TRADEMARK OF SCALES

DAVID-ANDERSEN
 Carl Johans Gate 20
OSLO
 NORWAY



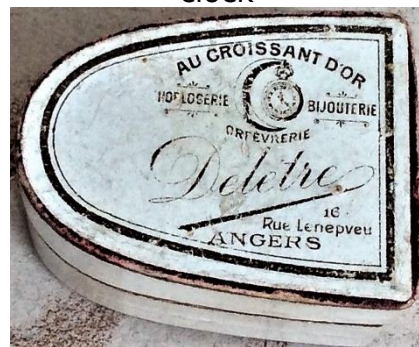
BROWN LETTERING ON OUTSIDE
 TRADEMARK OF SCALES WITH CROWN

DAVID ANDERSEN
CHRISTIANIA {NORWAY}
 Juveler



GOLD LETTERING ON OUTSIDE
 "ETABLERET 1876"

DELETRE
 16 Rue Lenepou
ANGERS {FRANCE}
 Au Croissant D'or
 Horlogerie Bijouterie Orfevriere
 clock



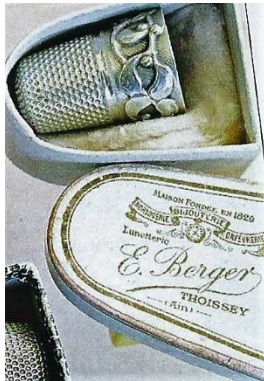
LETTERING ON OUTSIDE
 HANGING WATCH

DITTA GIOVANNI APA
 Corallo
 Cammel
 Tartaruga
TORRE DEL GRECO (Italia)



BLUE LETTERING ON OUTSIDE

E BERGER
THOISSEY
 (AIN) {FRANCE}
 Horlogerie Bijouterie Orfevriere Lunetterie
 "MAISON FONDEE EN 1829"



LETTERING ON OUTSIDE

E OPSOMER
 Maison Laroche
 11.B^D Rochechouart
PARIS
 Horlogerie Bijouterie Orfevriere



LETTERING ON OUTSIDE
 CLOCK FACE & JEWELLER'S COAT-OF-ARMS
 "SUCCESEUR"

E PIERRE
 Boul de Courtais
 Rue Porte Saint-Pierre
MONTLUCON {FRANCE}



LETTERING ON OUTSIDE
 "A LA CONFIANCE"

rare find of box with image of jewellery store inside the lid

F BUTZ
 {FRANCE}
 Joaillier



GOLD LETTERING ON OUTSIDE

F LECARTEL

31 Rue Alphonse Karr
ETRETAT {FRANCE}
 Horologie Bijouterie Orfevriere Lunetiere



STICKER ON OUTSIDE

F PELLEGRIN

Allées de Meilhan 4
MARSEILLE {FRANCE}



LETTERING ON OUTSIDE

F VIAUD

32 rue Beaurepaire
ANGER {FRANCE}
 Maison Vve Poupard



GOLD LETTERING ON OUTSIDE
 CREST

FABERGE
ST PETERSBURG
MOSCOW

ФАБЕРЖЕ СД ПЕТЕРБУРГЪ МОСКВА, ОДЕССА



WITH RUSSIAN IMPERIAL COAT-OF-ARMS
GOLD LETTERING
Cyrillic lettering
photo: W Isbister

FABERGE
ST PETERSBURG
MOSCOW
ODESSA

ФАБЕРЖЕ СД ПЕТЕРБУРГЪ МОСКВА, ОДЕССА



WITH RUSSIAN IMPERIAL COAT-OF-ARMS
Cyrillic lettering
thimble made by Henrik Wigström a Fabergé workmaster
1900s

FRIEDRICH SCHÜNER
MARKT18

SAALFELD a S {GERMANY}
Varen Gold & Silbervaren



GOLD LETTERING ON OUTSIDE
FERNRUF 414

G GUILLERMIN & CIE
{FRANCE}



GOLD LETTERING

G F HALLENGREN
Hörnet Kalende-och
Kyrkogatorna
MALMÖ {SWEDEN}
Juvelerare



LETTERING ON OUTSIDE

G HERBERT
PONS {FRANCE}
Bijoutier



MAROON LETTERING

GEORGE MERKLE

Spul 167 a

DEN HAAG {DENMARK}

Juweller



STICKER

In het gouden Molentje

TELEFOON 112644

GEORGES LEPLAT

14 Rue Judaïque

BORDEAUX {FRANCE}

Fabricant



GOLD LETTERING ON OUTSIDE

GIOVANNI RASPINI

{FRANCE}

Argenterie



LETTERING ON OUTSIDE

H K HANSEN

Adelgard

VORDINGBORG

Guldmed & Graver



Telf 198

HAMMERS FILIAL

Torvet 10

BERGEN {NORWAY}



GOLD LETTERING ON OUTSIDE

HENRY A LA PENSÉE
{FRANCE}



GOLD LETTERING
is this the name of a jeweller – or a product?

J A HENCKELS
BERLIN {GERMANY}



GOLD LETTERING
retail case is thimble maker's case with Henckel's
maker's mark

J L FRIBERG
Drottninggatan 80a
STOCKHOLM {SWEDEN}
Juvelerare



GOLD LETTERING

J M LUCARDI
AMSTERDAM {NETHERLANDS}
Juwelier



STICKER

JÉRÔME VANDERMAREN
13 Rue de la Petite Guirlande 13
MONS {FRANCE}
Horlogerie Bijouterie Joaillerie



GOLD LETTERING ON OUTSIDE

JOH.H PAULSEN
{DENMARK}
Juveler & Guldsmed



LETTERING ON OUTSIDE

JOYEROT & JACOT
BESANÇON {FRANCE}
Horlogerie-Bijouterie



BROWN LETTERING ON OUTSIDE

JUSTIN BLAZER
... ronne Succ
... **TBELIARD** {FRANCE}
Horlogerie Bijouterie Orfevrerie



LETTERING ON OUTSIDE

K HESTENES

BERGEN {NORWAY}

Guldsmed



LETTERING ON OUTSIDE

KEL RUSH

KALMAR {SWEDEN}

Juvelarare



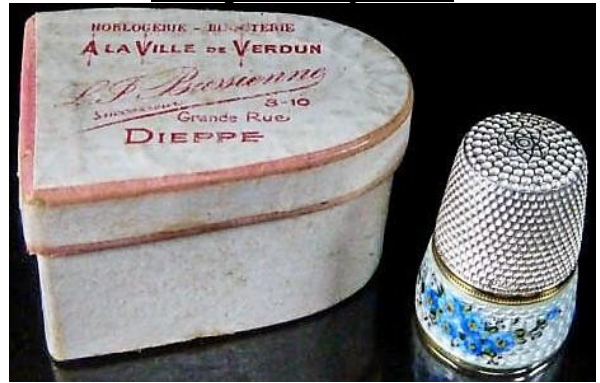
GOLD LETTERING

L I BASSIENNE

8-10 Grande Rue

DIEPPE {FRANCE}

Horlogerie - Bijouterie



RED LETTERING ON OUTSIDE

"A LA VILLE DE VERDUN"

LAURITS BERTH

KJOBENHAVN {DENMARK}

Juveler



GOLD LETTERING

UNKNOWN SYMBOLS & TRADEMARK

LEFEBVRE FILS AINE

Paris 106 Rue de Rivoli

TROUVILLE {FRANCE}



[FILS AINE means ELDEST SON]

JOAILLEUR FABRICANT

EXPOSITION UNIVERSELLE

MÉDAILLE D'OR PARIS 1889

"A.D." LETTERED IN GOLD ON TOP OF BOX

LEON EGUIAZA

13 Hernani 13

SAN SEBASTIEN {SPAIN}

ESPAGNE



LUDWIG RERTOCH

Kaiserstr. No165

KARLSRUHE {GERMANY}

Hof-Juwelier



LETTERING ON OUTSIDE
WITH A CROWN SYMBOL

M HAMMER

BERGEN {NORWAY}



LETTERING ON OUTSIDE

M HAMMER

Strandgaden 57

BERGEN {NORWAY}

Juveler Antikvitetshandel



LETTERING ON OUTSIDE

M SUUTALA

Vellamonk 2

PUHELIN 1911

Hameenk 24

PUHELIN 536 {FINLAND}

Kultaseppa Tampere



LETTERING ON OUTSIDE

MAGASIN SCHNEGAS

Grande Morskajan 17

ST PETERSBOURG {RUSSIA}

Joallerie Bijouterie



STICKER

MAISON FONDEE

Servan Place Dauphin 2

BORDEAUX {FRANCE}



GOLD LETTERING
"EN 1780"

MAX NIEHOFF

Breitestrasse 13-15 ecke Brückenstr

THORN {POLAND}

Juwelie



MOUWS CHAPEL

ST MARCELLIN

(IBERE)



GOLD LETTERING ON OUTSIDE

O TENGSTEDT & SON

GOTEBORG {SWEDEN}

Juvelare



GOLD LETTERING

OLE AAS

THRONDHJEM {NORWAY}

Guldsmed



STICKER

STILL IN OPERATION IN 2021

P FORTOUL

24 Rue des Beaux Arts

MARSEILLE {FRANCE}

Fabrique de Bijouterie Joaillere Horlogerie



LETTERING ON OUTSIDE

P VAN SANTENTZ

Paleisstraat 19

AMSTERDAM {NETHERLANDS}

Hofl...



GOLD LETTERING

PERNOT-GUY

45 Grande Rue

NOGENT EN BASSINGY {FRANCE}

Horlogerie Bijouterie



GOLD LETTERING ON OUTSIDE

R BRAULT

Maison Baudoin

54 Rue du Commerce

NEVERS {FRANCE}

Joallier Orfèvre



R JVERSEN

BERGEN {NORWAY}
Guldsmed



LETTERING ON OUTSIDE

R JVERSEN

Olaf Gate 31
BERGEN {NORWAY}
Guldsmed



LETTERING ON OUTSIDE

ROGIER-BIGARNE

ARNAY-LE-DUC {FRANCE}
Horlogerie Bijouterie



LETTERING ON OUTSIDE

ROUBAUS SUCC^R

Place des Halles
ST-MIHIEL (MEUSE) {FRANCE}
Horlogerie Bijouterie Orfevriere Ancienne M^{on}
Gerard Fils



LETTERING ON OUTSIDE

SIMONIN

12 Rue Gambetta 12
SEDAN {FRANCE}



GOLD LETTERING ON OUTSIDE

SPOHINOOR TRYGUE MARTHINSEN

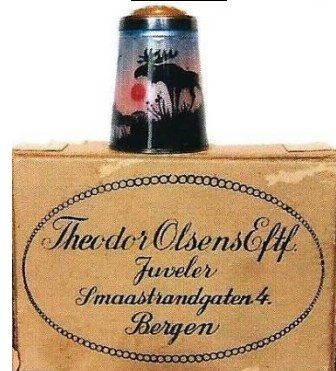
Karl Johansgd 17
KRISTIANIA {NORWAY}
Juveler-Forretningen



LETTERING ON OUTSIDE

THEODOR OLSENS EFTF

Smaastrandgaten 4
BERGEN {NORWAY}
Juveler



BLUE LETTERING ON OUTSIDE

U BELLINI

Via Guicciardini No2r

FIRENZE {ITALY}

Silversmith



STICKER ON OUTSIDE

V MAYER-SÖHNE

WIEN {AUSTRIA}



GOLD LETTERING

AUSTRIAN COAT-OF-ARMS

WILH HEUBERGER

Maxstrasse 7

BAYREUTH {GERMANY}

Juwelier

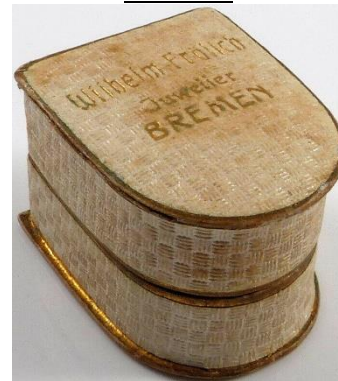


STICKER

WILHELM FRÖHLICH

BREMEN {GERMANY}

Juwelier



GOLD LETTERING OUTSIDE

Other Countries' Jewellers

C A OHNSTED

OTTAWA {CANADA}

Jeweller



GOLD LETTERING

E LEWIS

41 Queen St

AUCKLAND N.Z

Jeweller



WITH A CROWN SYMBOL
GOLD LETTERING

photo: E Titmus

HENRY BIRKS & SONS

Goldsmiths Silversmiths



INCLUDES LOGO OF THE HEADQUARTERS BUILDING
Canada's premier jewellers – no place needed

J BROWN

Fore St

WELLINGTON {NEW ZEALAND}

Goldsmith



LETTERING ON OUTSIDE
WITH A CROWN SYMBOL

LA JOYA

Gathmann Hermanos

CARACAS {VENEZUELA}



PAZ

Ruo del Villar 64

SANTIAGO {CHILE}

Joyeria - Relojeria y Plateria

[Jewelry - Watchmaker and Silversmith]



LETTERING ON OUTSIDE

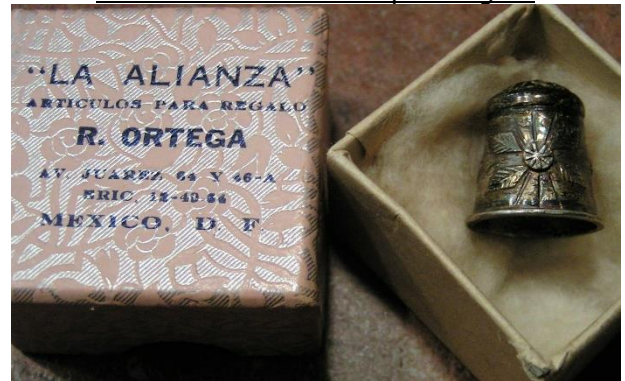
R ORTEGA

Av Juarez 64 Y 46A

ERIC 19-42-64

MEXICO D F

"La Alianza" Articulos par Regalo



BLUE LETTERING ON OUTSIDE

RYRIE BROS

TORONTO {CANADA}



GOLD LETTERING
(1897-1905)

S G ROSS

7a Willis St

WELLINGTON NZ

Engraver Watchmaker and Jeweller



THOS PEARSON

589 Wellington St

MONTREAL {CANADA}

Watchmaker & Jeweller



GOLD LETTERING

WHEATLEY BROS

REGINA {CANADA}

Jewelers



GOLD LETTERING ON OUTSIDE
retail box is also thimble maker's box with
jeweller's name on side of thimble

References

- Elizabeth Aldridge *Thoughts on thimbles. Part V Commemorative thimbles*. TCI 1984
Kenneth Cavill *Australian jewellers: gold & silversmiths and marks*. 1992
Gale Ebersole *John Wanamaker & related sewing tools*. [TCI Bulletin](#) spring 2017
Jane Sapone *Presentation boxes tell a story. J.B.Dickey jeweler – Newton, Kansas*. [TCI Bulletin](#) spring 2014
Dan Walbrun *Enameled thimbles of Norway*. 2012

Contributors

Judy Andrews | Bleasdales | Sue Christensen | William Isbister | Gladys Junge | Andrea Lange
Carolyn Meacham-Elegant Arts | Mary Agnes Mosher | Ray Nimmo | Val Rodda | Wolf-Dieter Scholz | Erin Titmus
Susan Webster

This listing of retail jewellers' thimble boxes does not purport to be complete or accurate in all aspects.
Rather it invites comment and contribution to add to our knowledge. My thanks to the contributors.

EMAIL thimbleselect@bigpond.com TO SHARE YOUR KNOWLEDGE

© **Sue Gowan**
April 2019