

# Modern British sterling silver thimble makers still to be identified

1960 – 2022

These thimble makers' – or sponsors' - thimbles are images from my archives. None of these makers' names appear in the list of silver makers for any of the British Assay offices: most of the initials (with no other details) appear in the following website

[Silver Makers Marks](#)

Do you know who any of these thimble makers are?

A&C<sup>o</sup> – AB (2) – ACW – AEC – ALW – BJK – B-L – BMS – CCSG – CJ – CJF – CJM – CN – CT – DB – DH  
DHJ – DMR – DRH – EKS – FIW&S – FWB – GPS – HBS – HG – HT – HW – JDP (1957) – JFB – JM – KEH&S  
KK&I – KMH – LAQ – LBW – LI – MA&S – MJET – MJT – MSL – NB – PC – PFE – PJH – PKG – PXI – R&BJC  
RGS – RL<sup>D</sup> – RP – RSW – S&D – SAH – SM – SRS – TLTD – TWAEC – VM – VML – WMS

See their lovely thimble creations

The listing is in the order of the last initial, which is probably the last name, in keeping with the main topic, where the maker's name is known

I can transfer them to those pages when the maker's name is identified

The assay office is listed where known, as well as an assay date

**\*\*** Makers cannot be identified because of GDPR = General Data Protection Regulations  
(these regulations prevent Assay offices giving out the person's name as they have not given prior permission as they registered after 1975)

We may never know these names

---

## Thimbles by the initials of the thimble maker/sponsor

A&C<sup>o</sup>



1994

London

clasped hands

assay marks are stamped upside-down

MA&S



1981

Birmingham

925

import mark

made by **Julius Wengert** of Pforzheim Germany

AB – i



1993

Sheffield

*Bronte Society Centenary 1893-1993*

B S separated by feathered pen

AB – ii



2002

London

925

import mark

**DB**



1984  
Birmingham

**FWB**



1999  
Edinburgh  
925  
millennium mark  
piercings along rim



1999  
Edinburgh  
925  
millennium mark

**JFB**



1982  
London  
etched fairy amongst grass stalks with butterflies  
smooth apex

NB



1969  
London

AEC\*\*



1984  
London  
applied stylised flower on smooth sides

PC - i



1989  
Birmingham  
applied daffodils

**PC - ii**



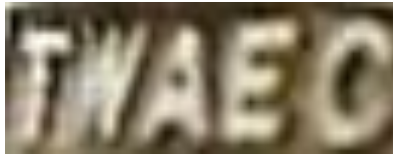
1993  
Sheffield  
Whitby Abbey  
Whitby jet in apex  
see also: Ralph Weston

**R&BJC**



1978  
London  
Celtic knot

**TWAEC**



2002  
London  
925  
commemorating Queen Elizabeth's golden jubilee

PFE



2015

Birmingham

14<sup>th</sup> International Conference 2015  
Dorset Thimble Society 30<sup>th</sup> Anniversary

CJF\*\*



1995

London

import mark  
enamelled applied pansies  
made by **Julius Wengert** of Pforzheim Germany



1995

London

import mark  
applied bluebells  
made by **Julius Wengert** of Pforzheim Germany

CCSG



1970 1977

London

large sized thimbles  
no indentations on flat apex

**HG**



assay mark unclear  
Heathergems apex

**PKG**



1979  
London  
applied crude figures  
crudely hand-indented

**DH**



1985  
London

**DRH**



1985

Birmingham

enamelled flowers on finely stippled ground

**KMH**



1982

Sheffield

gilt applied abstract design  
concave apex smooth



1982

Sheffield

9ct gold

**PJH**



1986

Birmingham

hand indented

SAH



1975

Birmingham

applied stylised flowers on stippled surface

KK&I



1978

Birmingham

LI



1999

Birmingham

925

Blue John stone in apex  
very tiny mark

**PXI**



1979

Birmingham

**CJ**



1985

Birmingham

marriage of Prince Andrew to Sarah Ferguson 1986  
peep in apex by **Woodsetton**

**DHJ**



1978

London

.375 9ct gold

garnets set in around rim

**BJK**



1984  
Sheffield  
Blue John



1987  
Sheffield  
Blue John



1989  
Sheffield  
Malachite



1989  
Sheffield  
Onyx

**JMK**



1989  
Birmingham

**B-L**



1981

Birmingham

Christmas 1981 with bell and holly



1984

Birmingham

Christmas 1984 with Three Wise Men



1984

Birmingham

Easter 1984 swimming ducks

**MSL**



1992

London

325 9ct gold

**RL<sup>D</sup>**



1987

Birmingham

925

import mark  
made in Portugal

VML



1979

London

two distinctive Celtic twisted bands

CJM



1977

Birmingham

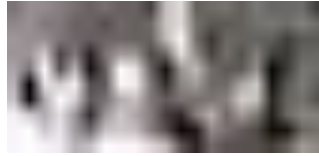
SM



1992

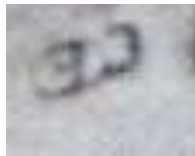
Birmingham

**VM**



1983  
Edinburgh  
hand beaten surface

**CN**



925  
*Cyprus*  
not assayed  
R: name lettered upside down - may not be British made

**JDP**



1957  
London  
stylised trees design at rim  
rare date for this period

**RP**



1976

**LAQ**



1985  
Birmingham

**DMR**



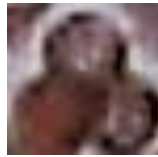
1978  
London

**BMS**



2003  
London

**EKS**



*DTS International Conference 2017 (Dorset Thimble Society)*  
not assayed

**GPS**



1981  
London

*Prince Charles Lady Diana Spencer 29<sup>th</sup> July 1981*

**HB&S**



1988

London

beehive-shaped with applied bees  
wooden thimble holder with an applied bee

**KEH&S**



1979

Birmingham

plain brushed surface  
mark poorly struck

**RGS**



1982

London

**S&D**



1987  
Birmingham  
9ct - 9.375

**SRS**



London  
applied stylised flowers with silver balls

**WMS**



1983  
Birmingham

TLTD



1987  
Birmingham  
OLD BUSHMILLS



1987  
Birmingham



1987  
Birmingham  
Harrods lettered over QE2 (Cunard cruise liner)



1987  
Birmingham  
Mum

CT



1988  
Birmingham

**HT**



1977

suspension loop attached at edge of apex

**MJET**



1981

Birmingham

**MJT**



London

applied gilt leafed plant, mouse and bee  
hand-beaten surface

ACW



1979  
London

ALW



1977  
Birmingham  
L: jubilee mark



1977  
Birmingham

FIW&S



1983  
Birmingham

**HW**



1986

London

handmade with applied butterfly

**LBW**



1982

Birmingham

**RSW**



1972

Birmingham

rough finish with abstract applied designs

**These marks have no corresponding thimble – do you have a thimble marked with these British maker's marks still to be identified? Please share**

**ACB** (Birmingham 1984) – **AM** (London 1985)  
**CLTD** (enamelled Birmingham 1985) – **CMA** (Sheffield 1977) – **GB** (Birmingham 1985)  
**KMK** (London 1990) – **MMH** (silver gilt London 1981) – **MW** (Birmingham 1983)  
**ST** (Birmingham 1988) – **TOLTD** (Birmingham 1982)

---

The list of **Contributors** may be found in the Modern British thimble makers listing

This listing of Modern British thimble makers still to be identified does not purport to be complete or accurate in all aspects.

Rather it invites comments and contributions to add to our knowledge. My thanks to the contributors.

EMAIL [thimbleselect@bigpond.com](mailto:thimbleselect@bigpond.com) TO SHARE YOUR KNOWLEDGE

© **Sue Gowan**  
**May 2022**