

# Poole Pottery thimbles

Have you ever had the opportunity to visit the Poole Pottery in Poole, on the south coast of England? It was such a happy experience back in 1973 to visit and to watch the artists at this pottery with the gorgeous handpainted pottery, set right on the quay at Poole.

The internet suggests there are now two potteries operating - the original in Poole and another in Staffordshire - those who live in these areas may know?

Once I became a thimble collector a decade later, I was determined to find a Poole thimble for my collection. The thimble output is small so it should be relatively easy for you to find their whole output.

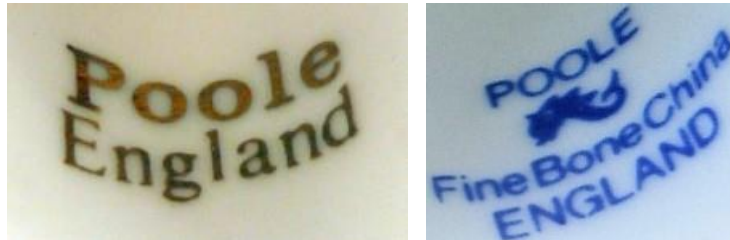
Two thimble designs featured in the monthly TCC club thimbles for their members - *Country Berries* and *Seagulls*: the latter dates from 1986. According to the accompanying leaflet Poole Pottery began in 1873, where they manufactured ceramic tiles, with their clays coming from the Dorset Hills. Using regional artists, they contributed their talents to Poole Pottery.

Their thimble range would date to the 1980s.

"The Hallmarked Thimbles of the World's Great Porcelain Houses" set of 50 issued by the Thimble Collectors Club in 1985, features the Poole Pottery dolphin logo for the Poole thimbles.

The thimbles are sturdy - a bit reminiscent of Coalport thimbles - and well made with no gilding and one could go far to find this quality in thimbles today. Some of the thimbles have a ridged self-pattern around the rim.

Three of their floral designs are known as Ophelia – Rosalind – Cymbeline. I have only been able to identify the last design.



L: Poole Pottery backstamp in gold – R: newer blue backstamp



Poole Pottery box - i



Poole Pottery box - ii



Poole Pottery box - iii



**The Hallmarked Thimbles of the World's Great Porcelain Houses**  
featuring their dolphin logo



**Country Berries**  
based on their Cranbourne dinnerware pattern  
Thimble Collectors Club [L]  
different shape [R] - none -TCC



kingfishers



**Seabirds**  
Thimble Collectors Club



**Poole Quay**



dolphins band using their logo



**Cymbeline**  
ridged rim



their traditional painting  
ridged rim



their traditional painting  
colour variation R



bird



**Poole Pottery**  
newer blue backstamp



**Libra**



**Scorpio**  
ridged rim



**Virgo**  
ridged rim

---

## Contributors

Linda Bennett | Barbara Kelly | Doreen Lilley-Pricklepin | Wolf-Dieter Scholz

This listing of Poole thimbles does not purport to be complete or accurate in all aspects. Rather it invites comment and contribution to add to our knowledge. My thanks to the contributors.

EMAIL [thimbleselect@bigpond.com](mailto:thimbleselect@bigpond.com) TO SHARE YOUR KNOWLEDGE

© **Sue Gowan**  
**February 2010**