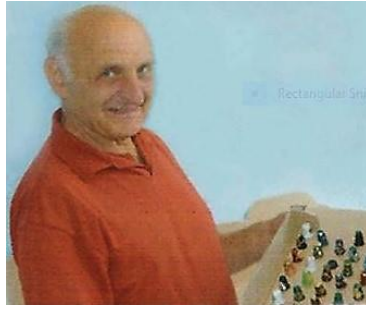


Felix Morel of Bath



Felix Morel – 1930-2016

I always felt that the output of thimbles by Felix Morel was too big a project to tackle as a topic. Once I began tho, this topic just flowed. I became fascinated by the scope and range of his thimbles. How he developed his prodigiously creative talent over a period between 1984 and February 2002 took me on a marvellous journey. How can I be so precise? That was the period which was covered in detail by *The Thimble Guild* where Morel became more than a valuable supplier – they saw him as “our friend from Bath”.

In the 1980s and 1990s thimble collectors everywhere were dependent on thimble mail order catalogues for buying modern collectables thimbles. Some outlets had monthly catalogues, some quarterly and some were annual. They were in the business of selling thimbles and as collectors we were totally dependent on them for the supply of new thimbles by new makers: the quality of their photos and the descriptions was important. Selling comes with marketing hyperbole as well.

It is the early thimble wholesalers and retailers tho who really began the move towards sourcing and supplying the growing thirst for collectable thimbles and here we must look to the pioneers. They were the ones who sought new makers to create thimbles, handpainted thimbles etc.

in the USA - Gimbel & Sons 1960 (Maine) - Roz Belford 1976 (New York) – Barbara Ringer 1970s (California) - Jean Shoup 1983 (California)

in the UK – Bridget McConnel 1981 (London) who sought out British silversmiths - Arthur Bell 1983 (Scotland) who championed Scottish craftspeople

in the Netherlands – Kay Sullivan 1982 – Friedy Kamp 1986 – Bertus van den Dikkenberg 1994
in Germany – P.J. Walter – Hans Peter Feldmann 1987

The following are the thimble sellers who were in operation in 1987 when Morel began to make thimbles.

Mail Order thimble catalogues

- [Shoup Thimbles Only](#). Jean Shoup featured Morel thimbles in her 1987 catalogue. The only reference to Morel was that they were from England. I would presume these were sourced thru Barbara Ringer who was a US thimble wholesaler
- [Gimbel & Sons Country Store](#). Gimbel catalogues were published annually every October. They were a good source of Morel thimbles in the US. With Barbara Ringer being the US thimble wholesaler, is it safe to say that Gimbel sourced their Morel thimbles thru her? Their descriptions are perfunctory, tho they offered Felix’s thimbles at a constant rate. They tended to offer many of the same thimbles in several catalogues in a row. Gimbel never once used the name of Felix Morel in their catalogues – using Made in England (or the equivalent England, English). In 1992 a thimble was described as by “our friends at the Toll House on Pulteney Bridge Bath”. Right towards the end of Felix’s thimble-creative life, they first used the name of *Tollhouse Thimbles* [2000] and then not consistently. (I am missing their 1987-1989, 1993 and 1999 catalogues. They are vital to this topic and once they come to hand this study will be complete)

- **TCG TTG** *The Thimble Collectors Guild/The Thimble Guild*. From June 1987 The Guild offered more of Felix's thimbles than any other thimble outlet world-wide. Their blurbs for Morel were highly descriptive, with more than was usual useful information throughout Morel's thimble career – they were the only catalogue offering his sets of thimbles for sale and they uniquely had many of his designed thimbles for sale. Felix was often described as their "our craftsman friend Felix from Bath". Rarely did they omit the maker's name but by then collectors could recognise a FM thimble? Each of the Morel thimbles sold by the Guild were offered by a thimble name – names dreamt up by the Guild's marketing team.
- **TSL** *The Thimble Society of London's* Bridget McConnel specialised in selling antique thimbles to her members. Yet she was one of the first to offer new Morel thimbles for sale, in 1984. They were never offered for sale under the Morel name, using the generic term "Modern thimbles".
- **Sullivan** *De Vingerhoed's* Kay Sullivan offered only one Morel thimble for sale (1987), where the maker's name was not mentioned.
- **van den D** *Het Vingerhoedje*. Bertus van den Dikkenberg sold Morel thimbles in his Dutch-Belgian Thimble Club catalogues - maker occasionally named.
- **Kamp** *Vingerhoed Nieuws*. Friedy & Gerrit Kamp. From 1993 the Kamps sold Morel thimbles. It took a while before Felix Morel was named as the thimble maker. Autumn 1995's thimble saw his name first used in their catalogues. There are catalogues in both Dutch and German. Once Morel announced his partial retirement in 1999, the Kamps purchased the remaining singles stocks.
- **Feldmann** *Die Fingerhut Post/The Thimble Mail*. Morel thimbles were sold by Feldmann. Their accompanying text in German and English gave details in depth of how Morel thimbles were made. Titles given for Morel thimbles were descriptive. Maker only identified as ... from England

Information is now coming to light attributing Barbara Ringer of Heirloom Editions, a thimble wholesaler in the US, for 'discovering' and encouraging Felix Morel in 1987 to turn from his jewellery store in Bath and begin his thimble-making career. This relationship continued until Morel's full retirement in 2002. **Academy Pewter** purchased Felix's remaining stock and continued to make his thimbles in their own factory. These were never to the standard of Morel's thimbles.

The spelling of this thimble maker's surname

I had been a thimble collector for more than ten years before I knew the correct spelling of the name of Felix Morel. When his surname is pronounced, it *sounds* to end in -LL.

The Thimble Collectors Guild tended to misspell their suppliers' names and it was only in November 1989 that they corrected the name from Morell or Morrell to **Morel**. The Guild often issued Certificates of Authenticity with the thimbles they sold, and the misspelled name would be perpetuated on those as well. This led to much misinformation with this maker's name being misspelt in the second-hand market.

Vingerhoed Nieuws listed this maker more times by Morell than Morel.

How to recognise Felix Morel thimbles

- Morel thimbles were never signed
- 99% of his thimbles were made of solid **brass** – then of copper, occasionally nickel – with a couple made out of wood – and only a couple of designs in silver but they were not made only of sterling silver, which would have required assaying
- his brass thimbles were heavier than most of the British-made brass thimbles of his time
- his thimbles remained true to a traditional thimble shape – some of which could be used for sewing if they fitted, though Morel was fond of attaching motifs to his thimbles, which would get in the way
- his thimbles were all of the same diameter – not sized for different shaped fingers
- being hand-turned on a lathe, his thimbles do not have the fine vertical lines above the rim, which indicates a machine-made thimble

- he did not work in pewter
- he added motifs (ranging from handmade cloisonne to silver or brass) to the sides of many of his thimbles – usually moulded to the shape of the thimble. He created the occasional fun or novelty thimble (one example is a cat's tail poking out of the side of a thimble). He catered for the collectables' market passion for thematic collections – cats, butterflies, swans, clowns, frogs, teddy bears etc. Now you will be able to search for the one significant to your thematic collection
- he incorporated crystals (1991) into his designs – used as flower centres – and then pearls (1996) both faux and cultured
- from 1987 onwards, Morel experimented with using coins as part of his designs – as coins became obsolete, he used them as motifs – moulding farthings, halfpennies, threepences and sixpences. Occasionally they were used to form the top of the thimbles
- tooled leather was in his design evolution - it was tightly wrapped around his brass thimbles, covering the sides, leaving the top in brass
- he evolved to using a moulded thicker shape to the rims of his thimbles from 1988, which he termed 'Wedding Band'
- he became most well-known for his engraved thimbles, which as the years passed, became increasingly complex and the hundreds of diamond cuts required to complete a design
- he worked assiduously on the top or apex of his thimbles and they became as much a work of art as the body of the thimbles
- commemoratives would have been commissioned by the Guild – there weren't many in his 15 year career as a thimble maker – 95th birthday of the Queen Mother to name just one – find others for yourself in the following pages
- Morel did not engrave his thimbles with lettering. If there is any, it will be found as part of the motif that he affixed – Woodsetton on the other hand lettered many of their brass thimbles

Evolution of Morel thimble designs

Initially, from 1984, Morel's thimbles were made of plain copper or brass, with smooth sides.

In 1988 he progressed to oxidising his brass thimbles to give them a black matt look.

This surface could then be diamond cut, letting the brilliance of his brass designs shine thru.

This was when his thimbles began to have the design engraved all around the thimble, greatly adding to their interest.

His next experiment was to use different colours to handpaint his thimbles – progressing in 1996 from that oxidising process to using black, blue, green, burgundy, white, brown, maroon and lastly purple paint. I find it difficult to really distinguish between burgundy and maroon – I have followed whichever colour was named in the catalogues.

Again, he engraved thimbles with a diamond cut to reveal the brass thru hundreds of cuts.

He experimented with a very pleasing hammer (hammered) finish (1994) giving a texture to his previously totally smooth surfaces.

Next was a lacquered and then an enamelled finish (1994) tho there had been early examples in 1988 (I question whether the catalogues were loose in the use of the term lacquer?)

Once he had perfected the background colour processes, his expertise with his engraving tools grew, creating some absolutely wonderful designs. Not content just to diamond cut his designs, they were further embellished with silver- or gold-plate.

None of these steps were exclusive – he chose the method of each design to suit the thimble.

It was a challenge that he seemed to relish for the rest of his creative life: continuously improving on his last marvel.

Morel did accept private commissions – for a thimble club in the Netherlands – and as gifts – like a dummy (pacifier) on a thimble for the birth of a baby. Do you have a privately commissioned thimble made by Felix?

A word of warning – Gill and David Bates of Woodsetton are highly skilled engravers and their later designs on their brass thimbles, without their peeps, are similar to Felix Morel's. Woodsetton brass thimbles tend to have a more domed apex than Morel's.

David Bates confirmed that Woodsetton Designs never collaborated with Felix Morel on any thimble.

What *The Thimble Guild* included in their catalogues about Felix Morel

- FELIX MOREL TAKES MUCH PRIDE AND PLEASURE IN HIS WORK. WITH SO MANY ITEMS NOW MASS-PRODUCED IT IS AN ESPECIAL THRILL TO SEE THE WORK OF THIS TALENTED AND DEDICATED CRAFTSMAN (April 1994)
- AN INCREDIBLE EFFORT AND TALENT GOES INTO SUCH ATTRACTIVE CRAFTSMANSHIP FROM ONE OF BRITAIN'S MOST TALENTED MAKERS (March 1999)
- ONLY ONE MAN IN THE WHOLE WORLD OF THIMBLES CAN DO THIS ... FELIX MOREL (April 1999)
- FELIX PUTS A HUGE AMOUNT OF TIME AND SKILL INTO EVERY PIECE HE MAKES (May 2001)
- WHEN IT COMES TO CREATING THIMBLE MASTERPIECES FELIX IS A PERFECTIONIST
- ONE OF BRITAIN'S MOST TALENTED THIMBLE MAKERS

Who was Felix Morel?

I am grateful to Marilyn Chesnutt for her 2017 article, for any biographical information. Personally, this aspect doesn't interest me as much as his thimbles.

It was her inclusion of the photograph of Felix I have used at the start of this topic that brought the man to life – tho the photo originated with Friedy Kamp. How I wish I'd met this thimble maker.

Felix was born in Prague in Czechoslovakia in 1930 and died in England in 2016. He was a goldsmith by training where he was apprenticed in Pforzheim in Germany. He arrived in the UK on a Kindertrain. As an adult he made the English West Country his home. He became a jeweller in Bath with his own shop and in 1987 turned his hand to thimble making. Here he had a thimble workshop and a shop called **Toll House** on the Pulteney Bridge in Bath. For those of you familiar with the Ponte Vecchio in Florence, the shops are similar on Pulteney Bridge.

Picture the size of his shop on Pulteney Bridge. It barely measured two metres deep by three metres wide. It was a size in keeping with the dimension of the bridge, which had shops on both sides of the bridge. The shop contained a small workbench and a chair, and it was from this shop that he sold his first copper thimble in 1987. There was a tollbooth to collect tolls in early days at one end of the bridge, which possibly gave Morel the name of his shop: Toll House.

Gimbel often referred to Morel as "from the Toll House at Pulteney Bridge in Bath" (1992) and from Avon (1996) – that is the name of the river that flows through Bath.



Pulteney Bridge, Bath – showing shops on the bridge

Were all Morel thimbles turned solely by Morel himself?

Felix turned his thimbles for years by hand on a lathe – starting with a block of solid brass, to create thimbles, which he then processed further by hand, with his own thimble designs. His thimbles were not cast from a liquid metal as most other brass thimbles makers did - nor were they mechanically deep drawn as thimbles were, at the turn of 19th century.

As his popularity and collectability grew, could he continue at that pace as the sole maker of Morel thimbles? Read the blurbs I have included where they were indicating this (ie turning on a lathe in October 1998).

"Thimbles partly made by myself, partly bought and supplemented from Swann" (according to Morel himself). That should decide the matter once and for all!!

Once he had decided to buy in base brass thimbles, he could concentrate on his designs and the finishes.

I have noted when his thimbles were issued in **limited** numbers and this became increasingly noticeable as the years passed – even producing editions of as small as 40.

He could be found in his thimble shop Toll House, still wearing his jeweller's leather apron.

The layout of Morel thimbles in this topic

It was a difficult decision for me to decide how I could present the massive thimble output by Morel. By colour became too clumsy.

I ended up choosing to list his thimbles in the order in which they were designed for sale, letting his growth as a thimble maker shine through, month by month.

Once I decided to use a chronological order for his thimbles as they were offered for sale (for the first of listed sale only), it was a then matter of letting the thimbles do the talking.

Heirloom Editions would have handled the dissemination of Morel thimbles in the USA, but with no mail-order catalogues to refer to (there were none), we won't be able to date the production of this group of thimbles. Please don't ignore this section at the end of this topic if your thimble can't be identified elsewhere.

There are over **944** thimble photos for you to browse – I hope you will find something of the affection for this thimble maker and his thimbles that I developed - to appreciate the passion that needed hundreds of hours that went into creating fine antiques of the future.

Not only have I included where the first thimble design appeared for sale – there is also a summary from the catalogue blurb. You should now be able to trace when your Morel thimbles were made, by what process etc. The name used in the catalogues is the one used here.

I have standardised all spelling to standard Australian spelling (words like enamelling) no matter the catalogue source but largely I used terminology used in the various mail-order catalogues.

As some of the catalogue photos are less than distinct (or in black & white) I will add a more recent photo taken of a real thimble, while retaining the original catalogue photos for posterity. Full views of the top of the thimble are as important, please.

Morel used many 'colourways' – I have included these below or after each relevant thimble in the mail-order catalogue section.

Morel thimbles sold thru mail-order thimble catalogues 1984-2005

1984



Copper

Threepenny coin

forms top – hand beaten sides

[TSL summer 1984](#)

L: [Feldmann Penny](#) no. 4 1988

L: b&w

R: hand beaten coin fits snugly into the top of the piece see the reverse of the coin inside

Brass

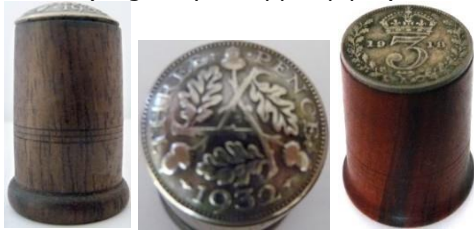
Threepenny coin

forms top - hand beaten sides

[TSL summer 1984](#)



TCG Threepenny May 1989
(originally a copper pipe!)



threepenny coin on wood (rounded or flat top)

This was Morel's first thimble – he made it from a copper pipe. He placed the finished thimble in his shop window and it sold immediately – and the rest is history once he tried a second thimble

1986



Copper

Star of David

handcrafted

TSL summer 1986

TCG April 1989

(sold with the maker's name of Felix Morell)
see 1993 white Star of David – 1996 Dauidsstern



Copper

Cross

TSL summer 1986



Copper

Cupid

TSL summer 1986



Copper

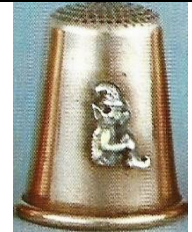
Frog

TSL summer 1986



Copper

silver frog



Copper

Pixie

TSL summer 1986



Copper

silver pixie
different position



Copper
Stained Glass
 applied heavy enamel. 1" high
 Shoup spring 1987
 Feldmann no. 7 1988 Mosaik
 TCG February 1989 Stained Glass
 (named as made by Felix Morrell)



brass with stained glass window



Brass
Brass Poppy
 chased top & bright cut engraving made with beveled cutting tool to remove some metal to create beautiful patterns that reflect the light
 Shoup spring 1987



Brass
Lightning
 chased top & bright cut engraving made with beveled cutting tool to remove some metal to create beautiful patterns that reflect the light
 Shoup spring 1987



Copper
The Butterfly
 TCG May 1987
 L: b&w photo



Copper
Copper w/Coin
 authentic coin is copper plated. 1" high
 Shoup spring 1987
 Gimbel English halfpenny October 1990 US\$9.95
 Half Penny genuine coin with Queen Elizabeth
 TTG Half n p! August 1997
 Kamp 2002
 see 1995 brown 1/2 Penny



Brass

Burgundy Leather

leather made by book binding co. using scraps the way they cover books - chased top & leather inlay

Shoup spring 1987 - 7/8"

TTG January 1991

Leather Bound Collection

hand tooled in gold soft richly coloured leather (black - burgundy - maroon - red)

see 1988 for other tooling patterns/colours



Brass

leather with different width of tooling with floral design



Leather

Green Leather

made all of leather - design stamped on leather &

gold - flat top

Shoup spring 1987 - 7/8"



red with similar tooling - brass top



Brass

Summer Butterfly

enamelled wings

Sullivan June 1987

Gimbel October 1991 Butterfly (asst. colours)

hand enamelled

see 2000 burgundy Butterfly Colours



Brass

Cat's Head

sculpted

TCG June 1987

(sold with the maker's name of Felix Morell which is perpetuated on the accompanying Certificate of Authenticity!!!)

Gimbel October 1994 Cat Bust

(Morell's only shaped thimble)





Brass

Greek Key

TCG July 1987

carefully etched his design onto a heavy white enamelled thimble – classically elegant

Kamp no. 82 2004-2

(sold with the maker's name of Felix Morrell)



Brass

additional lines



Copper

Irish 1/2p genuine coin

TCG December 1987

1988

- 1st use of his wedding ring rims
- 1st use of acid dipped to oxidise brass to black
- 1st designs of engraved design going around the thimbles giving wonderful symmetry



Brass

moss green gold tooled leather Florentine style

TCG April 1988

(sold with the maker's name of Felix Morrell)

see 1987 for other tooling designs/colours



blue with similar gold tooling



Copper

Jersey 1/2p genuine coin

TCG April 1988



Brass

Sixpence genuine coin

TSL spring 1988

TCG March 1989

(sold with the maker's name of Felix Morrell)

see 1995 copper Silver Sixpence – 1991 black Tanner

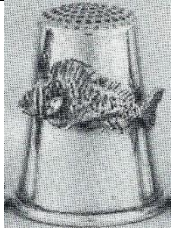


Brass

Thistle

handcrafted, (single thistle) motif in silver

TSL spring 1988



Brass
Fish

TSL summer 1988
b&w photo



Copper
Clown

TSL summer 1988
L: b&w photo



Copper
silver clown



Brass
black with enameled clown



Copper
Comedy and Tragedy Masks

TSL summer 1988
b&w photo

TCG July 1989

see 1989 brass Comedy and Tragedy - 1995 black Silver
Tragedy/Comedy Masks

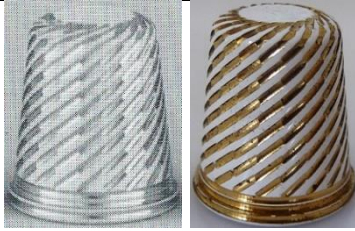


Brass
black with masks



Copper
Music Sign

TSL summer 1988
b&w photo
see 1998 white Treble Clef - 1999 white Tuneful Tribute



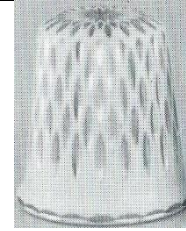
Brass
Lines

white enameling
TSL summer 1988
L: b&w photo

Feldmann no. 4 1988 Diagonal coated with white lacquer - engraved pattern of spirals cut into the lacquer



Kamp no.98 2008-4 with different top



Brass
Dashes

white enameling
TSL summer 1988
b&w photo



Brass

Black Diamond Collection

brass thimbles dipped in acid to turn them black - engraved with diamond cutter

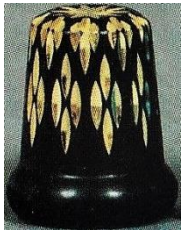
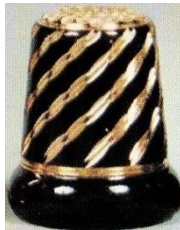
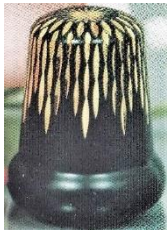
TCG September 1988

(named as made by Felix Morrell)

3rd from R: Feldmann Black-Gold no. 9 1988

3rd from R: Gimbel Rain October 1990

(a similar set available as below - black stove enamelled brass, diamond cut and gold plated)



Gouden regen / Goudregen

Kamp Gouden Regen I no.25 July 1993

Kamp Gouden Regen II no. 28 March 1994

Kamp Gouden Regen III no. 32 spring 1995

Kamp Goudregen IV no. 33 summer 1995
 Kamp Goudregen V no. 34 autumn 1995
 Kamp Goudregen VI no. 35 Christmas 1995
 see also Sheer Perfection 1995



Brass

Kamp Feestlijke Hoed I-II-III 2004-2



Brass

black Christmas Star
 October 1988



Copper

brass Girl Guides emblem
 TCG October 1988
 (certificate identifies the maker as Tollhouse)
 'Tollhouse' paper sticker inside
 see 1992 blue Girl Guides



Brass
Diamant

finely engraved by hand with the centre of the flower deeper for a good needle grip – then gilded

L: **Feldmann** no. 6 1988 **A SMALL MASTERPIECE**

b&w photo

TTG December 1993 Star of Wonder

R: gold-plated **AN EXTRAORDINARY PIECE OF WORK**



Brass
Diamond

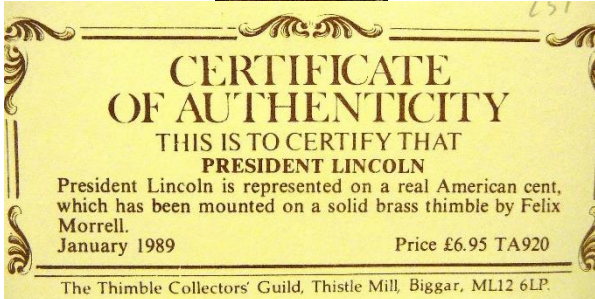
Gimbel October 1990

Stermotief

Kamp no. 89 2006-3 (sold with the maker's name of Felix Morell)
 slightly different star



Copper



Brass

American Cent genuine coin

TCG January 1989

(certificate names this President Lincoln)

(sold with the maker's name of Felix Morrell)



Copper

Dolphin

solid silver

TCG January 1989

(sold with the maker's name of Felix Morrell)



Copper

Tortoise

solid silver

TCG February 1989

(sold with the maker's name of Felix Morrell)



Silver

Heart

set with iridescent paua shell

TCG February 1989

(sold with the maker's name of Felix Morrell)



Silver-plated

Cameo

genuine pink set in a frame

(suspended by tiny ring from edge of top)

TCG February 1989

(sold with the maker's name of Felix Morrell)

see 1991 blue Cameo



Copper

Holy Cross

solid silver

Easter 1989

TCG March 1989

(sold with the maker's name of Felix Morrell)



Copper

Crucifix

(Christ on the cross)

solid silver

Easter 1989

TCG March 1989

(sold with the maker's name of Felix Morrell)



Copper

Lucky Horseshoe

TCG May 1989

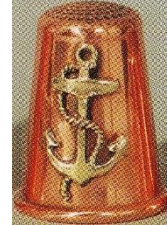
(sold with the maker's name of Felix Morrell)



Copper
Dolphin
 enamelled silvered
 TCG May 1989 £9.95



Brass
Anchor and Rope
 TCG June 1989
 (sold with the maker's name of Felix Morrell)
 Kamp Anker no. 89 2006.3 (Tollhouse) (sold with the
 maker's name of Felix Morell)



Copper
Anker van hoop (anchor)
 Kamp no. 83 2005-1 (Toll House)



Kamp Anker no. 89 2006.3 (Tollhouse) (sold with the
 maker's name of Felix Morell)



Brass
 blue with added chain – engraving around body



Brass
Comedy and Tragedy
 TCG July 1989
 (sold with the maker's name of Felix Morrell)
 see 1988 copper Comedy and Tragedy – 1989 black Silver
Tragedy/Comedy Masks



Copper
French Horn
 TCG August 1989
 (sold with the maker's name of Felix Morrell)
 Kamp Jachthoorn no. 26 November 1993
 (hunting horn)
 see 1997 Horn Concerto



Copper

Silver Threepenny Bit genuine coin

TCG August 1989

(sold with the maker's name of Felix Morrell)
see 1995 dark brown Silver Threepenny - 1990 wood
Threepenny Piece - 1992 black Silver Threepence



Copper

John F Kennedy
engraved brass

'JFK' lettered at neckline
'Tollhouse' paper sticker inside

TCG November 1989



Brass

Ballerina

sterling silver

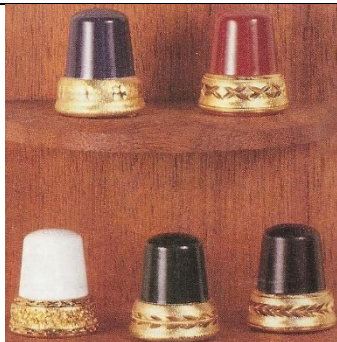
TCG December 1989

(first named as made by Felix Morel!!)



Brass

nickel with silver ballerina



Brass

Wedding Bands

handpainted before heavy skillfully engraved band being added to base

TCG December 1989

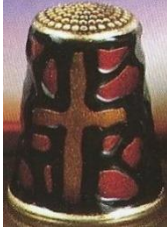
R: Gimbel October 1990 Wedding Band blue cobalt enamel thimble with a gold banded base



Copper
Hands in Prayer
 TTG January 1990
 TSL summer 2009
 see 1996 black Betende hande



Copper
Wren
 solid silver
 TTG February 1990



Brass
 iridescent Stained Glass surrounds the holy cross
 TTG March 1990



copper with stained glass with cross



Copper
Kissing Cousins
 solid silver
 TTG March 1990
 see 1993 brass Kissing Cousins – 1997 blue Kissing



Nickel-plated copper
Panda
 hand enamelled
 TTG June 1990



Nickel-plated copper
Cloisonne Owl
 TTG June 1990



Brass

Black Beauties

dipped in acid to turn it midnight black – etched & cut by hand with a diamond cutter

TTG June 1990



Brass

no brass top



Copper

Farthing genuine coin

TCG June 1990

see 1995 dark brown Farthing – black 1992 Farthing



Brass

The Swallow

brass dipped in acid to achieve black matt sheen
hand engraved two swallows

limited to 450

TTG July 1990

Kamp Zwei Schwalben February 1999



Nickel-plated brass

Thumper (rabbit)

cloisonne enameling techniques

TTG August 1990



Wood

Threepenny Piece

genuine coin molded to form top

Feldmann no. 12 1990

see 1989 copper Silver Threepenny Bit – 1992 black Silver Threepenny – 1995 dark brown Silver Threepenny



Nickel-plated brass

Cloisonne Cat

white with red ribbon

Gimbel October 1990



Copper

Hummingbird

Gimbel October 1990



Silver-plated brass
photo: Marilyn Chesnutt



Brass
silver hummingbird



Brass
Spider

matte black finish with sterling and Swarovski crystal
body – assorted colours
Gimbel October 1990



Copper
Angel

Gimbel October 1990



Brass
gold-plated
enameled thimble
R: different gold rim at atop



Brass

Cobalt and Gold Leaves

22ct gold-plated then cobalt is applied with leaves then engraved
limited to 250 sets

TTG November 1990

R: Gimbel October 1991 Leaf Design on Cobalt



Brass
Burgundy



Brass

maroon gold leaves – top differently engraved and rounded rim

1991

- 1st use of burgundy
- 1st use of green enamel
- 1st use of crystals



Copper

brass The Little Mermaid
 TTG January 1991



Brass

Burgundy and Gold

etched thousands of times - tops are a work of art in themselves

R: falling rain - starburst

limited to 250 sets

TTG February 1991



Brass

Gallantry

oxidised thimbles with medals made in the original form of each award, each with its original metal

George Cross - Victoria Cross - D.F.C. - Military Cross

limited to 750 sets

TTG April 1991



Copper



Brass

The Enamelled Quacker

mallard in flight on handpainted black thimble

TTG May 1991



Copper

The Fireman

brass helmet (with lovely details) & crossed axes

TTG May 1991



Brass

Leaping Dolphin

hand enamelled on painted black thimble

TTG June 1991



Brass

Fledgeling

with engraved spiky feathers

TTG June 1991



Copper

Silver Dragon

TSL summer 1988



Brass

Engraved Leaves

burgundy lacquer
TSL summer 1988

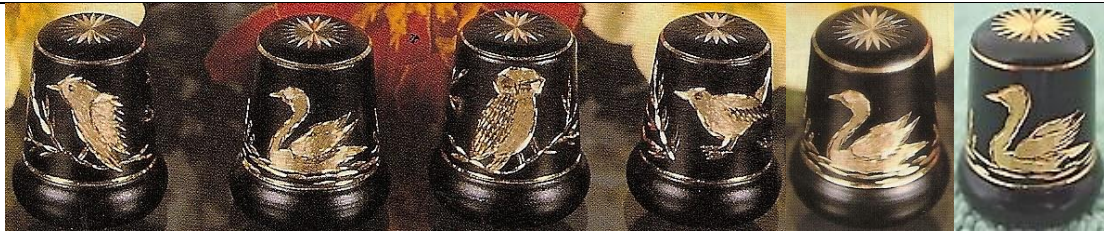


Brass

Brass and Enamelled Cat

black lacquer

TSL summer 1988



Brass

Birds of Brilliance

oxidised to a perfect matt black finish – diamond cut by hand – rose star engraved on the top with two perfectly engraved concentric circles. The birds are produced on both sides twigs & branches surround: kingfisher - swan (glides thru the rushes) - barn owl - wren

limited to 250 sets

TTG July 1991

Kamp Twee duifjes no. 85 2005-3 (Tollhouse)
(no decoration on apex)



see 1992 Cobalt and Gold Swan – 1995 blue Golden Swan - 1993 Blue Owl – 1998 black Käuzchen



Brass

cobalt with wren



Brass

Crystal Owl

black oxidised thimble - silver owl with Austrian crystals with amethyst coloured wing (colour may vary)

limited to 400

TTG August 1991



Copper

sterling Filigree band

Gimbel October 1991

Kamp Sommerversprechen 1998-4



Brass

black with brass band



Copper
Unicorn
sterling
Gimbel October 1991



Brass
Sterling Cat Face
Austrian crystal eyes (asst. colours)
matt black enamelled thimble
Gimbel October 1991



Brass
cat with green eyes



Brass
Honey Bear
silver on green enamelled thimble
Gimbel October 1991



Copper
silver honey bear



Brass
blue with brass honey bear or green



Brass
Sparkling Jester
colourfully asst enamelled – matt black
Gimbel October 1991



Brass

Diamond Stars

22ct gold-plated

each diamond cut is perfect & alternate ones are diagonally etched – rim is a perfect bevel

TTG November 1991

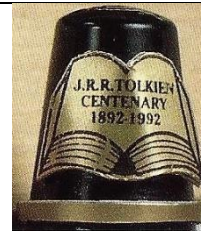


Copper



Silver-plated brass

R: purchased directly form the Toll House Bath 1980s



Brass

J.R.R Tolkien Centenary 1892-1992

black oxidised thimble with open book

TTG December 1991



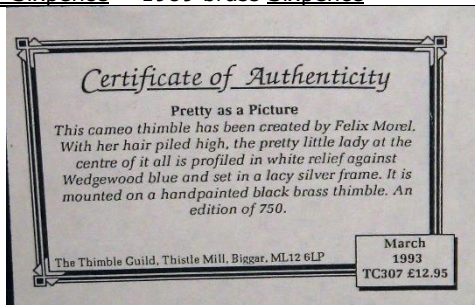
Brass

Tanner Thimble (sixpence)

curved & fitted snugly on black oxidised thimble

TTG December 1991

see 1995 copper Silver Sixpence - 1989 brass Sixpence



Brass

Cameo

blue machine-pressed in a small frame

blackened brass

Feldmann no. 18 1991

TTG Pretty as a Picture March 1993

white against Wedgwood blue on black painted brass

limited to 750 sets

Gimbel October 1995 Wedgwood Blue Cameo black enamelled thimble

see 1989 pink Cameo



Brass

Romancing the Stone

semi precious stones in silver mounts in Victorian style

black oxidised thimbles

black onyx – tiger’s eye – amethyst – jade – turquoise – lapis lazuli

limited to 600 sets

TTG December 1991



Silver-plated

Stones suspended from top’s rim



Brass

Golden Snowflakes

gold-plated then handpainted white – each design diamond hand cut

limited to 575 sets

TTG January 1992

Gimbel October 1992 White Enamel

see 1992 burgundy Brass Garland



Brass

maroon with diagonal leaf pattern



Brass

Farthing

genuine coin on enamelled thimble

TTG January 1992

see 1995 dark brown Farthing – 1990 copper Farthing



Brass

Girl Guides

blue handpainted

TTG February 1992

see 1988 copper Girl Guides



Brass

blue with gold band at top



Brass

Silver Threepenny genuine coin
black oxidised thimble

TTG April 1992

see 1989 copper Silver Threepenny Bit – 1990 wood Threepenny Piece – 1995
dark brown Silver Threepenny



Brass

Silver Wedding Bells
black oxidised thimble

TTG April 1992



Brass

Jeremy [mouse]
gold-plated
black oxidised thimble

TTG April 1992



Brass

Cartoon Fun

black oxidised thimbles

western cowboy – wise old owl – Bumper the rabbit - fawn – singing bluebird

limited to 400 sets

TTG June 1992

Gimbel October 1992 Wise Old Owl black enamelled gold-plated



Brass

Summer Gems

handpainted snowy white then etched & individually deeply diamond cut into pretty designs. Felix has placed tiny cut colourful crystal gems into each design

TTG June 1992

green gems – mauve crystals – all have gold band top & bottom



Kamp Paradiso no. 25 July 1993 f30

Kamp Witte Kerst no. 26 November 1993

white lacquered

Kamp Blue Lagoon no. 33 summer 1995

white enamelled brass thimble with blue stones in the four hearts of engraved flowers

Rubin autumn 1995

Kamp Schneesterne no. 35 Christmas 1995



Brass

different engraving on top – blue flower gems used



Brass

Crystal Frog

black oxidised thimble

limited to 350

TTG July 1992

Gimbel October 1992 Forest Green Frog
US\$19.95 hand enamelled with diamante frog



Brass

Felix's Cat

(colours vary)

black oxidised thimble

TTG August 1992



Brass

Autum Golden Leaves

hazel leaf trail – sweet chestnut – floral fern – autumn hornbeam

handpainted moss green thimbles are gold-plated & have been diamond cut & displaying hand indented tops

TTG September 1992

see 2000 green Circler of Leaves



Brass

Cobalt and Gold Swan

hand etched swan on gold-plated thimble

Gimbel October 1992

Kamp Swaan no. 29 June 1994

see 1991 black Swan – 1995 blue Golden Swan



Brass

Sterling Swan

Gimbel October 1992



Copper

Vintage Car

Gimbel October 1992



Brass



Brass

Gold-Plated Bird

Gimbel October 1992



Brass

Burgundy Brass Garland

hand etched with sunbursts & garlands

Gimbel October 1992

see 1992 white Golden Snowflakes



Brass

Blue Owl

hand etched with owl design then painted rich blue

Gimbel October 1992

see 1991 black Barn Owl – see 1998 black Käuzchen



Brass

gold-plated Turtle on Black

enamelled thimble

Gimbel October 1992

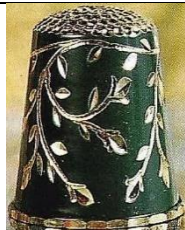


Brass

Christmas Star

gold-plated with star of Bethlehem engraved on apex with six engraved crosses – handpainted in rich burgundy

TTG November 1992



Brass

green Bright Holly

diamond cut design - clear winter sky meets white line of frosty earth

limited to 450

TTG December 1992



Brass

white Winter Crystals

ice white and sparkling like ice – cat's eye embedded

TTG December 1992



Brass

different rim



Brass
Train Spotting
 TTG January 1993



Brass
Lokomotiefje
 Kamp no. 89 2006 (Tollhouse)
 (sold with the maker's name of Felix Morell)



Copper
 brass train



Brass
Woodland Wonders
 fieldmice - squirrels
 handpainted in dark leaf green - diamond cut & gold-plated to hold their sheen
 limited to 300 pairs
 TTG February 1993



Brass
Swan-Song
 enamelled in gold outline-almost like cloisonne work on black-painted thimble (swan colours: red blue or white)
 TTG March 1993



Brass
Silver Wings
 celebrating 75 years of the Royal Air Force (RAF)
 painted in airforce blue with sterling silver airforce wings
 TTG April 1993
 TSL winter 2008
 see 2000 blue RAF Thimble



Brass

Flurry of Wings

using a new technique, he applies the butterflies painted in glowing colours, to black thimbles – wings are then edged with gold & the thimbles bodies are diamond cut to give background of ferns & leaves

limited to 250 pairs

TTG May 1993

Gimbel October 1994



Brass

Kamp Serie Vlinders no. 73 2002-4

(sold with the maker's name of Felix Morell)

see 2000 burgundy Butterfly Colours



Brass

thimbles not engraved with sprigs



Brass

Kissing Cousins

gold-plated

limited to 300

TTG June 1993

see 1990 copper Kissing Cousins – 1997 blue Kissing



Brass

Handsome Prince (frog)

gold-plated

green handpainted brass thimble - engraved pond surface & plants

limited to 295

TTG June 1993



Brass
Sophie
 Kamp July 1993
 cloisonne cat



Brass
Bands of Gold
 gold-plating around the broad rim with highly glossed jet black paint - engraved with leaves stars & flowers
 limited to 250 sets
 TTG July 1993



Brass
 set of 4 - bands are not engraved - black / blue



Copper
Musiek Harp
 Kamp no. 25 July 1993
 see 1999 black Harfe - 2001 Burgundy Harp



Brass
Silver Dragon
 ebony black painted thimble
 TTG August 1993



Copper
Fiets
 Kamp no. 25 July 1993
 (early bicycle in silver)
 Gimbel October 1995
 heavy silver Pennyfarthing (bike)
 see 1999 brass Antikes Fahrrad



Copper
Musiek Cello
 Kamp no. 25 July 1993



Brass
Golden Rose
 gold-plated
 dark emerald green painted thimble
 limited to 350
 TTG August 1993



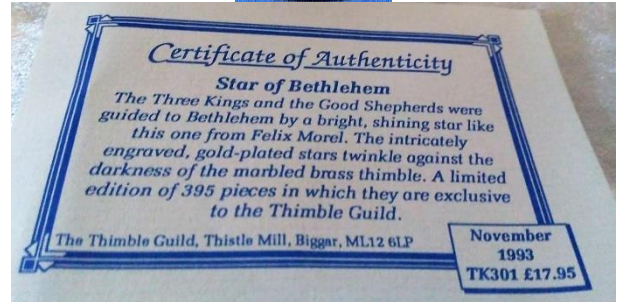
Brass
Roosje
 Kamp no. 83 2005-1 (Toll House)
 black with golden rose with extra gold band at apex



Brass
Star of David
 engraved & heavily gold-plated
 limited to 250
 TTG August 1993
 Gimbel October 1996 Star of David white enamelled
 see 1988 copper Star of David - 1996 Davidstern



Brass
Beautiful Blue
 deep blue thimble intricately engraved & then gold-plated
 TTG October 1993
 (previously available as part of a set - not found)



Brass
Star of Bethlehem
 black hammer finish
 TTG November 1993
 limited to 395



Copper
Musiek Saxofoon
 Kamp no. 26 November 1993
 brass saxophone

- 1st use of hammered brass



Brass

gold-plated Burgundy and Gold
leaf shapes that have been engraved stand out boldly
TTG January 1994
similar to Gold-Plated Flower 1994



Brass

Kruisje
Kamp no. 28 March 1994



Brass

white with silver cross over black
see 1998 black Inspiring Cross



Brass

Stunning Stars

enamelled in the purest white – the engraved with the highest degree skill with a pink crystal at the centre of each star. two perfectly engraved concentric lines add to the brilliance highlighted with 9ct gold
TTG April 1994
Gimbel October 1994 Rose Crystals white enamelled
Kamp Bruidstooi no. 33 summer 1995
enamelled, engraved with a diamond & provided with pink stones



Brass

Ballet Slippers
hammered brass
TTG May 1994



Copper

France and Germany Star 1944-45

medal inscribed with the initials of King George VI this is a miniature replica awarded during the campaigns of NW Europe from D-Day to the surrender of Germany
TTG May 1994



Brass

D-Day Workhorse
black enamelled thimble
crafted gold-coloured jeep
TTG May 1994



Brass

Golden Galleon

gold-plated

matt black painted thimble

crafted gold-coloured jeep

TTG July 1994

Gimbel October 1994 Galleon blue enamelled thimble



Brass

Autumn's Glory

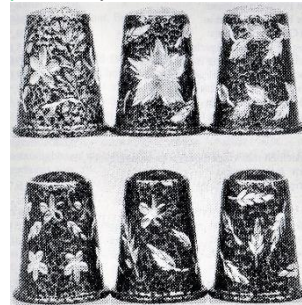
hammered finished & lavishly gold-plated – the tops are intricately engraved with leaves

TTG September 1994



Kamp Hamerslagstructuur no. 25 June 1994

Kamp Klimop no. 30 autumn 1994



Brass

Kamp Hammered set of 6 to be issued one a month autumn 1994

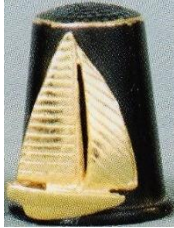


Brass

Into the Night
gold-plated

black enamelled thimble he has engraved the stars and ripples of the water which were gold-plated as well as the yacht

TTG October 1994



Brass

Zeilschip

Kamp no 89. 2006-3 (Tollhouse) (sold with the maker's name of Felix Morell)
no engraved stars, brass line at top



Copper

brass yacht



Brass

Black Hammerfinish
gold-plated

branches & flowers

Gimbel October 1994



Brass

Bird on a branch
gold-plated

black enamelled thimble

Gimbel October 1994



Brass

Cloisonne Rose

white enamelled thimble

perfection in simplicity

Gimbel October 1994

Kamp Roosje no. 30 autumn 1994



Brass

Prima Ballerina

black enameled thimble
her pink dress is a nice contrast
[Gimbel](#) October 1994
see 1996 blue Prima Ballerina - green 1995



Brass

Enamelled Bee

black thimble with sterling silver bee
[Gimbel](#) October 1994



Copper
silver bee



Brass

Sterling Clown

holds colourful balloons on black enameled thimble
[Gimbel](#) October 1994



Brass

Teddy Bear

gold-plated
hammerfinish
[Gimbel](#) October 1994
see 1997 green Teddy Bear



Brass

Wedding Band

gold-plated
beautifully engraved with traditional leaf design
[Gimbel](#) October 1994



Brass

Cloisnone Owl

black enameled thimble (asst. owl colours)
[Gimbel](#) October 1994



Brass

Gold-Plated Flower

[Gimbel](#) October 1994
similar to 1994 Burgundy and Gold



Brass

Tulip Spray

cloisnone
engraved with leaves that are gold-plated (colours may vary)

[TTG](#) December 1994
[Kamp](#) Tulpenblüte no. 36 1996-1



Nickel

Brilliant and Sparkling
gold-plated

leafy design hand engraved which reflects light from all directions

TTG December 1994



Brass

blue

1995



Copper

1/2 Penny genuine coin
dark brown oxidised thimble

TTG January 1995
see 1991 Half Penny



Copper

Silver Threepenny genuine coin
dark brown oxidised thimble

TTG February 1995
see 1989 copper Silver Threepenny Bit – 1990 wood Treepenny Piece – 1992 black Silver Threepence



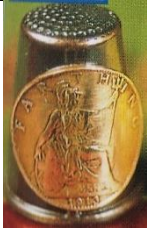
Brass

Ballerina on black
van den D February 1995
see blue Prima Ballerina 1996 – pink 1994



Brass

enamelled flower black
van den D February 1995
see 1995 white Lily



Copper

Farthing genuine coin
dark brown oxidised thimble
TTG March 1995
see 1992 black Farthing



Copper

Silver Sixpence genuine coin
dark brown oxidised thimble
TTG April 1995
see 1991 black Tanner - 1988 brass Sixpence



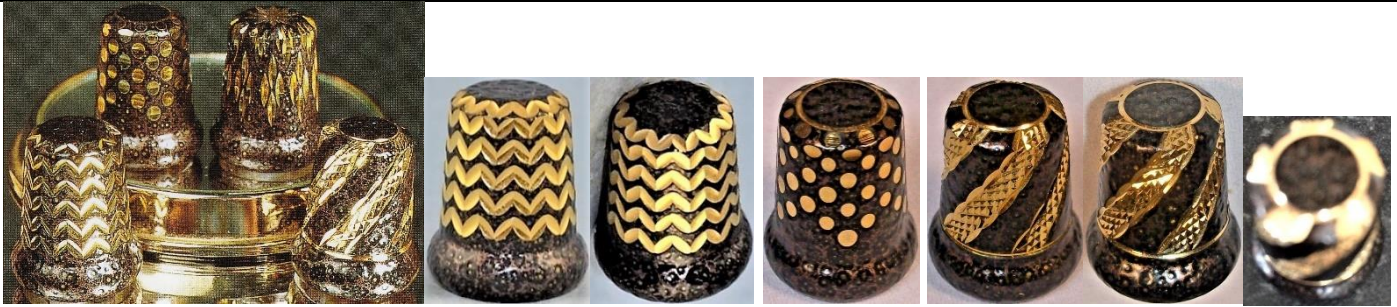
Brass

VE Day Medal
applied to hammer finish thimble
silver-plated pewter
commemorating medal presented to all servicemen at
victory in Europe May 1945
TTG May 1995
Kamp Engeland herdenkingsmunt 1939-1945 no. 92
2007.2 (Tollhouse)



Brass

The Champion (horse)
nickel
black enamel with silver-plated laurel leaves
TTG June 1995



Brass

Sheer Perfection
hammer finished, hand cut each with a different yet equally striking design lavishly gold-plated
TTG June 1995



Brass

Wondrous Owl
gold-plated
hammer-finished thimble shimmers with the crystals on its breast
limited to 150
TTG July 1995
Gimbel October 1995 Diamante Owl black enamel - engraved dome
Kamp Uil in stras (owl in rhinestone) no. 83 2005-1 (Toll House)



Brass

Celebrated Cloisonne

coated in white enamel diamond cut and gold-plated – adorned with stunning flower (colour varies)

TTG July 1995

see 1995 black



Brass

Kamp Enzian no. 41 1997-2 (gentian)



Brass

red flower



Brass

Royal Tribute

enamelled in rich deep burgundy gold-plating on the engraving catches the light part of the celebrations for the Queen Mother's 95th birthday

limited to 450

TTG August 1995



Brass

Silver Scissors

deep red, richly enamelled with silver scissors that actually open

TTG August 1995

Gimbel October 1997 Burgundy Enamelled Brass



Brass

gold-plated Golden Swan

blue enamel diamond cut thimble emphasises the delicate precision of the engraving

limited to 195

TTG September 1995

see 1991 black Swan – 1992 Cobalt and Gold Swan



Nickel

Gold auf Silber

Kamp no. 34 autumn 1995

artful handwork from the workshop of Felix Morel. A gold-plated, diamond-cut thimble

Kamp Gold auf Silber II no. 36 1996-1



Brass

German Silver Clown (won't tarnish)

black enamelled thimble

Gimbel October 1995



Brass

handpainted gold and white clown



Brass

Band of Silver

weaving around the rim of this black enameled thimble are diamond cut silver shapes

TTG October 1995

see 2000 Black and Silver unengraved version



Brass

Gold-Plated Cat

black enameled thimble

Gimbel October 1995

see 2001 maroon Aristocratic Cat



Brass

Hunter Green

enameled thimble, plated horse head and shoe

Gimbel October 1995



Brass

Gelukspaad

Kamp no. 83 2005-1 (Toll House)



Brass

Handetched Flowers

black enameled thimble – graceful gold-plated hand appears to be holding gold-plated flowers

Gimbel October 1995

Kamp Hand met bloementakjes no. 95 2008-1



Brass

Heart

white enameled to highlight the (red) cloisonné heart

Gimbel October 1995



Brass

Black with white heart, blue flower



Brass

Silver Tragedy/Comedy Masks

hammer finish

Gimbel October 1995

see 1988 copper Comedy and Tragedy – 1989 brass Comedy and Tragedy



Brass
Sterling Cat
 black enameled thimble
 Gimbel October 1995



Brass
Stars and Snowflakes
 pair of hammer finished thimbles, etched with the
 designs then gold-plated
 TTG December 1995



Brass
 brass windmill with club logo CVV 1995
 club thimble for 1995 of the Nederlandse Vingerhoedklub
 Kamp no. 33 1995-2 (Toll House)

1996

- 1st use of purple enamel
- 1st use of pearls



Brass
Two Hearts as One
 enamelled in white then expertly diamond cut – each
 heart is studded with a crystal
 TTG January 1996



Brass
Love is in the Air
 22ct gold-plated
 black enameled thimble with lovebirds
 TTG January 1996



Brass

- [Kamp Königsperle I](#) no. 36 1996-1
Burgundy red enamelling (Royal pearl set)
- [Kamp Königsperle II](#) no. 38 1997-3
- [Kamp Königsperle III](#) no. 43 August 1997
- [Kamp Königsperle IV](#) no. 45 1997-6
- [Kamp Königsperle V](#) no. 51 December 1998
- [Kamp Königsperle VI](#) no. 54 June 1999



Brass

Grüner Sarong

- [Kamp](#) no. 38 1996-3
 - [Kamp Violetter Sarong](#) no. 41 1997-2 (sold with the maker's name of Felix Morell)
 - [Kamp Sarong III](#) no. 44 October 1997 (sold with the maker's name of Felix Morell)
red metallic circles
 - [Kamp Sarong IV](#) no. 45 1997-6 (sold with the maker's name of Felix Morell)
garish green
- see also 1997 Sari (a different shaped set)



Brass

Gimbel October 1996 Green Sari/Purple Sari



Brass

- Prima Ballerina
gold-plated
black enamelled thimble
TTG February 1996
see 1994 pink Prima Ballerina – green 1995



Brass

Kreuz

- [Kamp](#) no. 37 June 1996
this cross is carved with great care - was gold-plated
after the enamelling, so the shine is permanent
available in red or white



Brass

Betende Hände

Kamp no. 37 June 1996
hands are of gold-plated silver
see 1990 copper Hands in Prayer



Brass

white with gold top



Brass

Davidsstern

Kamp no. 37 June 1996
see also 1988 copper Star of David - 1993 Star of David



Brass

Sari Designs

using the latest technology, each is double coated in brilliant jewel enamel colours of the East. Hand engraved traditional scroll patterns of the sari

lavishly highlighted by hand in 22ct gold (purple – jade – burgundy)

TTG June 1996 set

see 2000 Purple Sparkle for similar purple thimble
see also 1996 Sarong set



Brass

blue sari



Brass

Schnuller – blau – rosa

Kamp no. 37 June 1996

(dummy for a baby boy or girl)



Brass

Golden Sprays

described as enamelled *cobalt blue*, this catalogue photo is misleading!
hand engraved & generously highlighted in 22ct gold

TTG September 1996



Brass

black with golden sprays



Brass

green with brass top and gold line at rim

R: no brass top or brass line

L: made by **Academy Pewter**. I have retained this example, as their thimbles were not of the quality of workmanship as Felix's, when seen and handled in person



Brass

Autumn Leaves

hammer finished thimbles hand cut with a different yet equally striking leafy design then lavishly gold-plated
[chevron-type block pattern on apex]

TTG October 1996



Brass

silver with hammer finish



Brass

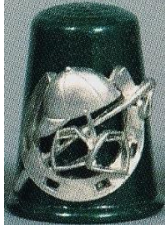
Riding Ensemble

enamelled in racing green – decorated with a gold-plated crop, stirrups & jockey's cap & horseshoe

TTG October 1996

Gimbel October 1996 Jockey

Kamp Jockey no. 82 2004-2 (Toll House)



Brass

Kamp no. 95 2008-1
green with silver



Brass

Pig Jumping Thru a Thimble

gold-plated

green enamel thimble

Gimbel October 1996



Brass

Floral

hand engraved gold-plated
silver is then applied to the blossoms

Gimbel October 1996



Brass

Gold Crosses

circle black enamelled thimble

Gimbel October 1996



Brass

Wedding Bells

white enamelled thimble with diamond cut silver garland & radiant silver bells

Gimbel October 1996

Kamp Huwelijksklokken no. 84 2005

gold bells with different top

Kamp Bruidsklokken no. 95 2008-1

no band at top with sprigs



Brass

white - with gold bells with three different tops



Brass

burgundy with gold bells with different top



Brass

Golden Flakes

burgundy enamelled thimble engraved by hand, gold-plating each one.

Same technique for shimmering top

TTG December 1996

1997

- 1st engraved rims



Brass

Violin Concerto

Felix loved classical music!

enamelled thimble with violin with diamond cutting emphasising its edges, as well as the rim

TTG February 1997

see 1998 Burgundy Geiger



Brass

black with gold violin



Brass

Schneewei u. Rose

Schneeweiss u. Blau

Kamp no. 41 1997-2

real jewels

Kamp no. 41 1997-2



Brass
Tulpen ... van Amsterdam
Kamp no. 41 1997-2



Brass
Gold 'n' Silver
diamond cut to perfection in vertical lines - entire piece has been gold-plated, the engraved areas further highlighted with silver
TTG April 1997



Brass
Horn Concerto
the music continues – French horn with engraved areas further highlighted with silver
TTG May 1997
see [French horn](#) 1989



Brass
A Cut Above
when it comes to diamond cutting Felix is certainly one of the best exponents of this intricate craft patterned & entirely gold-plated
TTG October 1997



no gold trim at apex



Brass
Pearl-Centred Floral
enamelled
Gimbel October 1997



Brass
Golden Flowers
brilliant purple enamelled
Gimbel October 1997



Brass

Electric Blue Teardrop
enamelled

Gimbel October 1997

TTG Blue Raindrops September 2001 a dense group of beveled raindrops etched thru vibrant metallic blue enamel - diamond cut double banding & a star on top with thick wedding band shape around the base



Brass

Kissing

blue enamelled

Gimbel October 1997



Brass

Kamp De eerste zoen no. 84 2005-2
different top

see 1993 brass Kissing Cousins - 1990 copper Kissing Cousins



Brass

Garden of Leaves

encircle purple enamel

Gimbel October 1997



Brass

Sterbloem

Kamp no. 82 2004-2 (Toll House)



Brass

Golden Teardrop

purple enamel

Gimbel October 1997



Brass

Wedding Band

four gold-plated sunbursts - enamelled

Gimbel October 1997



Brass

Teddy Bear

silver nickel

enamel

Gimbel October 1997

see 1994 black Teddy Bear



Copper

Roman Coin

antiqued copper with a casting of a Roman coin. Original found in Roman remains in Bath, Felix's home city
TTG November 1997



Brass

Schneemann

Kamp no. 45 1997-6
 (Kamp uses Schnewpop in 2003)
Gimbel October 1997
 enamel snowman with wreath



Brass

Weihnachtsbaum

Kamp no. 45 1997-6
 Dark red, with cloisonne tree full of lights
Christmas Tree
 specially finished in festive scarlet decorated with enamelled tree festooned with glittery red & white baubles & golden tinsel
TTG December 2000
 see 1998 white Cloisonne Christmas Tree



Brass

Glint of Gold

Felix's ability when it comes to copper wheel engraving is unparalleled – thimble has been deftly patterned before being entirely gold-plated
TTG December 1997

1998

- TTG mainly offered only **limited** editions for each thimble



Copper

Tennis Racquet with Ball
van den D March 1998



Brass

Easter Cross

22ct gold-plated cross stands out on a pure white background – top is gold-plated having been diamond cut

limited to 250
TTG April 1998



Brass

blue



Brass

Golden Crown

against a background of royal blue is a gold-plated crown – top has been diamond cut & gold-plated

limited to 200

TTG May 1998



Brass

top is blue enamelled with gold rim



Brass

Golden Stars

several hundred cuts on each

limited to 200 sets

TTG May 1998

R: hand scored design on black lacquer reveals sparkling brass



Brass

Felix de Katze in schwarz/weiss

Kamp no. 47 1998-2

cat's face with paws

(sold with the maker's name of Felix Morell)

b&w photo



Brass

cat's face with gold paws



Brass

Azure Pearls

enamelled with stunning deep metallic turquoise – hand engraved with delicate floral design
pearl beads at the centre of each flower

limited to 100

TTG June 1998

van den D October 1999



Brass

Burgundy Pearls

enamelled with beautiful burgundy – diamond cuts in depth intricate floral pattern & on top – engravings then gold-plated

7 cultured pearls at centre of flowers

limited to 195

TTG June 1998



Brass

Zwei Spechte

Kamp no. 48 June 1998
woodpeckers



Brass

Arabische Nacht

Kamp no. 48 June 1998
Burgundy starry night



Brass

Crystal Berry

TTG July 1998

25 crystals encrusted in goldplated strawberry on dark green enamel
(back to sold with the maker's name of Felix Morrell)



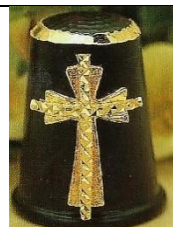
Brass

blue enamel – no crystals



Brass

green enamel – no crystals



Brass

Inspiring Cross

model, cast, diamond engrave, gold platde & mount symbolic crosses on black enamelled thimble

limited to 175

TTG August 1998

(plaited look to the cross)

see 1994 white Kruisje



Brass

Pearly Pleasure

enamelled with deep forest green engraved with ornate Florentine Renaissance designs which are then gold-plated – 5 cultured pearls set within engravings

limited to 150

TTG August 1998

(back to sold with the maker's name of Felix Morrell)



Brass
Käuzchen

Kamp no. 49 1998-4
(sold with the maker's name of Felix Morell)
owl (different top from 1991) – see 1992 Blue owl



Brass

Pearly Black

turned on a lathe, enamelled it black, intricately engraved with diamond tool – gold-plated the engravings & in centre set 5 cultured pearls

limited to 150

TTG October 1998

van den D October 1999



Brass

Electric Red

vertical engraving
Gimbel October 1998



Brass

gold-plated with silver cascades



Brass

Thimble Cat

cloisonne face with tail
on gold-banded white enamelled thimble

Gimbel October 1998

see burgundy 1999



Brass

Treble Clef

gold-banded enamelled thimble

Gimbel October 1998

see 1999 white Tuneful Tribute – 1988 copper Music Sign –
1999 Burgundy Musikschlüssel



Brass

brass treble clef



Brass

Cloisonne Christmas Tree

Gimbel October 1998

see 1997 red Weinachtsbaum



Brass

Perfection in Pearls

5 cultured pearls set in gold-plated deeply engraved white enamel
 limited to 150
 TTG November 1998



Brass

burgundy
 grapes with pearls

Gimbel 1998

photo: Mary Ellen Wakeley



Pewter

bead grapes
 grapes are suspended off ring and articulated
 made by **Academy Pewter**
 their pewter thimbles have a distinctive rim not used by Morel

1999

- 1st use of maroon enamelling
- 1st use of brown enamelling
- 1st use of jewellers' 'galerie wire'



Brass

Tuneful Tribute

enamelled in white – treble is cast, plated, enamelled & applied (no gold rim at apex)
 limited to 195
 TTG January 1999
 see 1998 white Treble Clef – 1998 copper Music Sign – 1999 Burgundy Musikschlüssel



Brass

Flashing Frost

engraved golden top, thru to twinkling highlights of Jack Frost on branches ... deep pine colouring with gold engraving
 limited to 154
 TTG February 1999



Brass

Golden Spring

deeply engraved forsythia bloom around the branches on heavily gilded green enamelled thimble

limited to 150

TTG March 1999



Brass

Budding Tree

deeply engraved on heavy gilded green thimble

limited to 150

TTG April 1999



Brass

Budding Rose

leaves drape lazily from golden summer rose on deeply engraved maroon thimble

limited to 150

TTG June 1999

(engraved brass rim – a first)



Brass

Sparkling Shapes

engraved golden top on (hammered) deep copper brown colouring offset by the gold engraving

limited to 150

TTG June 1999

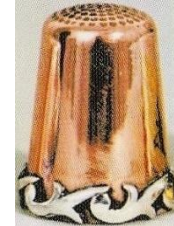


Brass

Antikes Fahrrad (bike)

Kamp no. 54 June 1999

see 1993 copper – Fiets



Copper

Spielende Delphine

Kamp no. 54 June 1999

sterling silver dolphins at trim see 2000 black Black and Silver



Brass

Regal Blue

in vibrant blue & gold Morel used latest technology – thimble double coated in bright blue jewel enamel colours with hand engraved designs & gold trim lavishly highlighted

limited to 100

TTG July 1999

(L photo does not show as gold!)



Brass

Golden Petals

combination of green & gold, meticulously hand engraved & generously highlighted in 22ct gold

TTG August 1999



Brass

emerald – different ringed apex



Brass
Tuba

Kamp no. 53 1999-4
(sold with the maker's name of Felix Morell)
see also 1999



Brass
Geiger (violin)

Kamp no. 53 1999-4
(sold with the maker's name of Felix Morell)
see 1997 black Violin concerto



Brass
Musikschlüssel

Kamp no. 55 September 1999
(sold with the maker's name of Felix Morell)
see 1998 white Treble clef



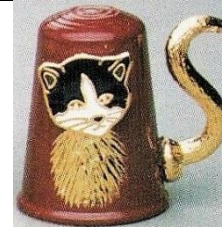
Brass
Maroon & Gold

deepest maroon background star & petal shapes
engraved around top of thimble – classically molded
bottom band – shapes are gold-plated
limited to 50
TTG September 1999



Brass
Harfe

Kamp no. 56 October 1999
see 1993 copper Musiek Harp - 2001 Burgundy Harp



Brass

cat on maroon
van den D October 1999 with extra engraving as cat's
body
see white Thimble Cat 1998



Brass

Farben der holländische Fahne
Kamp no. 56 October 1999
(red white and blue the colours of the Dutch flag)
gilded silver Dutch boy, windmill and Dutch girl
(sold with the maker's name of Felix Morell)
(made for Nederlands Thimble Club)



Brass

St Andrews Lion Rampart [sic]
against background of royal blue to commemorate re-
establishment of the Scottish Parliament
TTG October 1999



Brass

Dutch boy - windmill



Copper
lion rampant



Brass

Gothic Gold

Morel brings us one of the patterns found on mediaeval clothes – dark brown enamelled thimble – top & base encircled with two gold bands of mediaeval design

TTG November 1999



Brass

black with medieval design



Brass

Golden Sprays

emerald green & gold hand engraved & highlighted in gold base is carved in delicate gold band

TTG December 1999



Brass

Silvesterabend

Kamp no. 57 December 1999

(sold with the maker's name of Felix Morell)

(Burgundy shades from adjacent thimble – it's all brass)



Brass

Mellofon

Kamp no. 57 December 1999

(sold with the maker's name of Felix Morell)



Brass

Sonniges 2000

Kamp no. 57 December 1999

(sold with the maker's name of Felix Morell)

(for Millennium)



Brass

Tuba

Kamp no. 57 December 1999

(sold with the maker's name of Felix Morell)

see also 1998

- some Gimbel thimbles may first have featured in 1999 catalogue



Brass
Ready Teddy ... Not!

teddy is a bright gold colour wears a ruby-like bowtie – brown enamelled gold-banded thimble
TTG January 2000



Brass

Black and Silver

black enamelled background shows up bright silver gothic looking circlet
TTG January 2000
see 1995 black Band of Silver for engraved band – 1999 copper Spielende Delphine



Brass

Choice Mackintosh

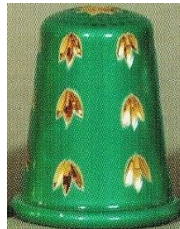
leaves of gold deeply engraved – Morel adds a touch of Charles Rennie Mackintosh with trio of solid leaves intertwined & draped down from top of the piece – emerald green – royal blue - black
TTG February 2000
(showing both sides – C is verso view)



Brass

Tagesablauf

Kamp no. 59 May 2000 (Daily Routine)
morning – afternoon – evening – night
(sold with the maker's name of Felix Morell)



Brass

Kamp no. 80 2004.2



Brass

Cirlet of Leaves

emerald green & gold hand engraved with 22ct gold highlighting the cirlet

TTG March 2000

see 1992 moss green autumn hornbeam



Brass

Blue Sparkler

enamelled in brilliant blue with diamond cut with vertical design – bright brass top intricately hand scored

TTG April 2000

see 2001 Blue and Gold Glitter



Brass

no lines



Brass

Catastrophe!

black & white moggie on green enamelled thimble

TTG April 2000



Brass

emerald



Brass

Corpus Christi

white enamelled thimble, cross has been diamond cut – for 1st communion

TTG May 2000

Gold Cross

engraved white enamel with gold trim

Gimbel October 2000



Brass

maroon with cross



Brass

Butterfly Colours

burgundy lacquered – butterfly colours vary

TTG May 2000

see 1993 black Flurry of Wings



Brass

Lacy White

applied a lacy filigree effect on top of white lacquered thimble draping over the sides – complemented by a frilly band near the base

TTG June 2000



Brass

Glittery Bluebird

blue rust & white enamelled bird on brown & gold
hammer-finished thimble

TTG September 2000

for collectors unfamiliar with Morel thimbles, the use of
Tollhouse Thimbles with no mention of Morel, may come
as a surprise



Brass

RAF Thimble

Air Force blue & brass badge specially lacquered to
keep its shine

TTG September 2000

see 1993 blue Silver Wings



Brass

Kamp RAF 2004-3 (from Toll House)



Brass

cobalt with silver badge



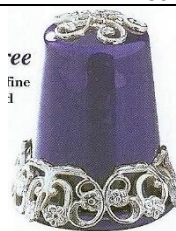
Brass

Purple Sparkle

purple enamel is cleverly diamond cut to let sheen shine
thru

TTG October 2000

see 1996 purple Sari Designs



Brass

Floral Filigree

silvery filigree of fine flowers twirls around base

TTG October 2000



Brass
Red Maple Leaf
brown enamel thimble
[Gimbel](#) October 2000



Brass
Palace of Versailles
intricate crown encircles thimble
[Gimbel](#) October 2000



Brass
red and gold maple leaf
brown mottled



Brass
Gold Lovebirds
green enamel thimble
[Gimbel](#) October 2000



Brass
Falling Leaves
enamel thimble
(pearl in centre of the brass flower on top)
[Gimbel](#) October 2000



Brass
applied Pink Orchid & Gold Wreath
enamel thimble
[Gimbel](#) October 2000
see 2001 white Pink Orchid



Brass
Floral Garland
design embellishes gold-plated enamel
[Gimbel](#) October 2000



Brass
Encircling Stars
 design embellishes gold-plated enamel
[Gimbel](#) October 2000



Brass
Cascading Gold Stars
 enamel thimble
[Gimbel](#) October 2000
 TTG February 2001 Under the Loggia gleaming
 concoction of leafy strands tumble down – enamelled in
 white, gold-plated the diamond cut design & gilt flower
 on top



Brass
 white with silver cascade



Brass
Green with Silver Enamel Thimble
[Gimbel](#) October 2000
 (from Toll House Thimbles)



Brass
Blue with Gold Enamel Thimble
[Gimbel](#) October 2000
 (from Toll House Thimbles)



Brass
 Maroon with Silver Gilded Enamel
 delicate filigree
[Gimbel](#) October 2000



Brass
Purple with Gold Gilded Enamel
 delicate filigree
[Gimbel](#) October 2000



Brass
Black with Silver Gilded Enamel
 delicate filigree
[Gimbel](#) October 2000



Brass
Sitting Cat
 black enamelled thimble with charming cloisonne cat
[Gimbel](#) October 2000



Brass

Ginger Cat

brown enameled thimble with charming cloisonne cat
[Gimbel](#) October 2000



Brass

emerald



Brass

Green & Gold

golden rosebud crowns this glossy green thimble –
fringe of floral trelliswork
[TTG](#) November 2000



Brass

Blue & Silver

shower of etched silver flowers twinkle down sides of deep blue thimble with frosty filigree draped over the top
[TTG](#) November 2000

[Gimbel](#) October 2000 Blue with Silver Enamel Thimble (from Toll House Thimbles)



Brass
Dotty Dalmation [sic]
 black-coated thimble
 TTG January 2001



Brass
gilt Aristocratic Cat
 rich dark maroon coating
 TTG January 2001
 see 1995 black Gold-Plated Cat



Brass
 maroon with copper cat



Brass
Swan Lake
 silvery finish on enamelled blue with a diamond cut ring
 top
 TTG February 2001



Brass
 blue with gold swan



Brass
Black and Silver
 spiked cap of glittering filigree over black enamelled
 thimble
 TTG March 2001



Brass
 blue with silver lace



Brass

Emerald & Gold

first enamelled in silver then in emerald green to give a gorgeous lustre – three panels are etched thru to the brass with starbursts; three remaining green panels are diamond cut with fern design – star motif on top

limited to 40

TTG May 2001



Brass

Pink Orchid

glittering laurel wreath surrounds gold-plated orchid adding a single star on top & gold band

TTG June 2001

see 2000 white Pink Orchid & Gold Wreath



Brass

white with gold orchid



Brass

Maroon & Gold

Careful engraving emphasises the rope edged effect on this glittering thimble – decorated in diagonal whirl of maroon enamel & diamond cut designs with a star on top

limited to 40

TTG June 2001

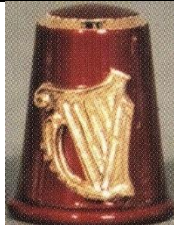


Brass

Black Fuchsia

purple cloisonne fuchsia hangs from a silvery stem – touch of Art Nouveau; enamelled in dramatic black

TTG August 2001



Brass

Harp

Kamp no. 67 September 2001

(sold with the maker's name of Felix Morell)

see 1993 copper Musiek Harp – 1999 black Harfe



Brass

Shear Magic

reel of scarlet cotton & a pair of sewing shears stand out on enamelled dramatic black

TTG September 2001



Brass

Blue & Gold Glitter

shower of diamond cut glitter cascades down sides: enamelled, engraved & gold-plated – finished with a festive starburst on top

TTG October 2001

see 2000 Blue Sparkler



Brass

Autumn Leaves

ferny leaves drift around etches design thru green enamel & adds a starburst on top. A thick wedding ring rim

TTG October 2001

2002 – farewell advert on Morel’s retirement



Brass

five of six of these thimbles had not appeared in the **TTG** catalogues
TTG February 2002

top three(cat butterfly horseracing) were again advertised **TTG** February 2003
 with Morel’s retirement he found a horde of one-offs whilst clearing out his Tollhouse – offered here?

**Morel thimbles sold thru other outlets -
 at Toll House shop in Bath**

the Kamp thimbles were singles acquired from Morel from 1999

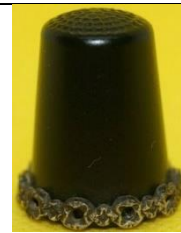
BLACK



grebe – engraved flower on top



silver crucifix



squared silver patterned rim



cloisonne seated teddy bear



stylised flower & leaves between two bands – star on top



brass squirrel



dragonfly with crystals



gold peony – gold ring at top



cloisonne puffin



hammer finish, gems at centre of
 flowers – flat chevron top like Oct
 1996



Ranken-motif (tendrils)
Kamp no. 95 2008-1



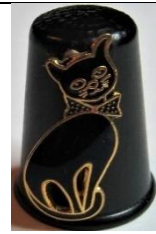
Biljarter (billiards player)
Kamp no. 95 2008-1



hammer finish with fern & flower design



arrows



cat with spotted bow



Feston
Kamp no. 83 2005-1 (Toll House)



Kerstkat
Kamp no. 94 2007-4



Goud krullen (shavings)
Kamp no. 95 2008-1



silver duck



white cat with spotted bowtie



jewelled rabbit

BLUE



pale blue & gold chequerboard
(see also Green)



brass 'Pulteney Bridge Bath'
(highly sought after!)



cloisonne fish – gold ring at top



Sterren
Kamp no. 84 2004-4



gold engraved flowers



cloisonne frog



silver stork
(see also Copper)



grebe – engraved flower on top



pale blue with silver seahorse - engraved reeds



Vuurtoring Plymouth
Kamp no.84 2004-4

BRASS



Prince of Wales feathers
(see also Copper; Green)



ship's wheel
(see also Copper)



zigzag pattern all round



silver striped cat



Ammonite
(see also Copper)



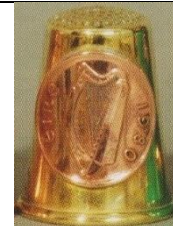
silver elephant



gold cowboy duck



silver mountain goat



Irish halfpenny
Kamp no. 80 2003-5

BURGUNDY



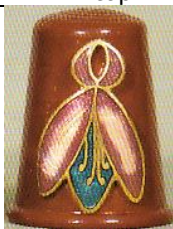
stippled cross with two minis - gold top



plain crosses all round - gold top



Gekke poes (crazy cat)
Kamp no. 83 2005-1 (Toll House)



Fuchsia
Kamp no. 82 2004-2 (Toll House)



Parelband
Kamp no. 83 2005-1 (Toll House)



Hartje
blauw - rood - silveren met steentjes
Kamp no. 77 2003 Aug (Tollhouse)

COPPER



silver small bee



silver Celtic cross



Ammonite
(see also Brass)



brass 'Tetley's Brewery Wharf'



silver shamrock or clover
(see also Green)



silver eagle



silver pick and shovel



brass 'Ripon Hornblower'



silver mouse



brass trumpet



silver dolphin (different)



brass Prince of Wales feathers
(see also Brass; Green)



silver penguins



Keltisch kruis
Kamp no. 83 2005-1 (Toll House)
brass St Cuthbert's cross
(see also Wood)



horse



Stuurwiel van schip (ship's wheel)
Kamp no. 83 2005-1 (Toll House)
(see also Brass)



brass stork
(see also Blue)



Draak (dragon)
Kamp no. 83 2005-1 (Toll House)
brass gryphon
(see also Green)



two silver hearts



brass big wheel 'Morwellham Quay'



silver bird in flight



Nederlands coin
Kamp no. 80 2003-5
(see also White)



silver bow

GREEN



leaves around top & bottom with pearls



diagonal gold & green panels – star atop



panda



four wavy lines with stars –
"Designed by Felix Morel"



teddy bear 'I love you' heart



swan atop (topper) with reeds



Prince of Wales feathers
(see also Brass; Green)



rabbit with leaves



hedgehog atop with engraved leaves
L: silver – R: gilt



pale turquoise green & gold
chequerboard
(see also Blue)



Klavertje drie (clover)
Kamp no. 95 2008-1
(see also Copper)



brass rabbit atop with reeds



brass dragon/gryphon
(see also Copper)



Stork delivery
Academy Pewter
R: gilt pewter



Takken
Kamp no. 95 2008-1

LEATHER



black with different gold tooling

MAROON



wavy lines with dots



stylised flowers & leaves – gold top



squared silver lacy rim with filigree apex



stars and stylised flowers – centred designs remind me of arithmetic symbols!

NICKEL



flower

PURPLE



Exotisches Guirlandes
Kamp no. 82 2004-2 (Toll House)

SILVER-PLATED BRASS



flowers & leaves – patterned top – diamond shape on band



stars on textured surface



stylised ferns



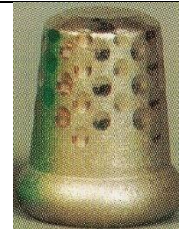
brass engraving falls down over apex



blue diagonal stripes
Academy Pewter



Ruit op staal
Kamp no. 82 2004-2 (Toll House)
R: purchased directly form the Toll House Bath 1980s



Stalen vingerhoed
Kamp no. 85 2005-3 (Tollhouse)



purchased directly form the Toll House Bath 1980s



purchased directly form the Toll House Bath 1980s

WHITE



Diamond Cut

Motieven Kamp no. 92 2007.2 (Tollhouse)

Top R: The 'messier' copy may have come from the **Academy Pewter** era



blocks band

Kamp no. 82 2004-2



Motieven

Kamp no. 92 2007.2 (Tollhouse)



Motieven

Kamp no. 92 2007.2 (Tollhouse)



daffodil with engraved reeds



Nederland Juliana

Kamp no. 92 2007.2 (Tollhouse)
(see also Copper)



Christmas tree with candles



engraved cross with flowing top



Bridspaar

Kamp no. 84 2005-2 (bridal couple)



Bloemtjes

Kamp no. 92 2007.2 (Tollhouse) (flowers)



Leo

sign of the zodiac

WOOD



brass St Cuthbert's cross
(see also Copper)

None of these thimbles were made by Morel

all these thimbles have appeared for sale on ebay as Felix Morel thimbles – buyer beware!



domed apex – Woodsetton



Morel's thimbles did not have milled rims



domed apex – Woodsetton



Pewter
Academy Pewter



made in USA in Maine, NH



Shiner's fez - made in USA?



the reflection of the fine vertical lines above the rim in this photo (L) identify this brass thimble as machine-made
these three examples are shorter than Morel thimbles (owl - rabbit - bow – dragonfly [not shown])



handpainted by Olivia, Birmingham

References

- Marilyn Chesnutt *Where are you, Felix Morel?* TCI Bulletin summer 2017
Marilyn Chesnutt *Thimbles by Felix Morel*. PowerPoint presentation TCI Convention 2016
Feldmann *Die Fingerhut Post/The Thimble Mail*. (Germany). 1988-1992
Gimbel & Sons Country Store catalogues. 1990-
Friedy Kamp *De vingerhoeden van Toll House on Pulteney Bridge. Het levensverhaal van Felix Morel*. Vingerhoed
nieuws vol 19, no 82, 2004
Friedy Kamp *Felix Morel Toll House* Vingerhoedwereld Jan 2021
The Thimble Collectors Guild (TCG)/The Thimble Guild (TTG) catalogues
The Thimble Society of London (TSL) catalogues 1984-2009
Vingerhoed nieuws catalogues 1993-2008

Contributors

Wolf-Dieter first suggested Felix Morel as a thimble topic
My thanks to Wolf-Dieter and Jean for sharing scans of their Guild catalogues to complete my set. Without them this
exercise would have been pointless

Yolanta Bogdziewicz | Joanna Blackie-Sew Many Bits | Pawel Brzyski | Marilyn Chesnutt | Betty Gerrits
Lin & Bill Heggs | Friedy Kamp | Jelena Krupstova | Mariam | Priscilla Moran | Ray Nimmo | Maurice O'Reilly
Diane Poesk | Mabel Rogers | Linda Samaripa | Wolf-Dieter Scholz | Jean Taylor | Mary Ellen Wakeley
Michael Wheeler | Krystyna Zagajewska

This listing of Felix Morel's thimbles does not purport to be complete or accurate in all aspects.
Rather it invites comment and contribution to add to our knowledge. My thanks to the contributors.

EMAIL thimbleselect@bigpond.com TO SHARE YOUR KNOWLEDGE

© **Sue Gowan**
March 2021