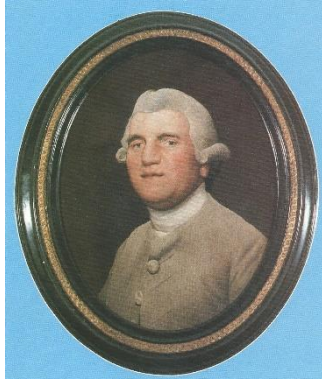
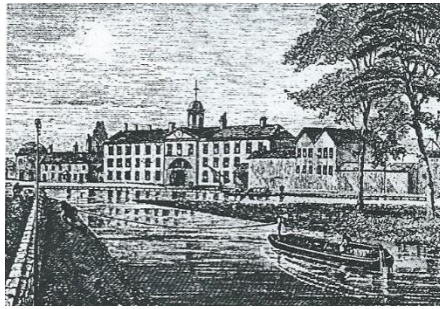


Wedgwood Jasperware thimbles



portrait by George Stubbs

Josiah Wedgwood (1730-1795) was born in Burslem. He opened on his own here at the Bell Works in 1759. In 1765 he moved the works to Etruria near Stoke-on-Trent. He had experimented and developed his own ceramic paste. Due to pollution of the Etruria site, the cleaner air of Barlaston, four miles south of Etruria, was chosen for their new complex. The foundation stone was laid in 1938 and Wedgwood production began there in 1940. Some procedures continued at the former site but finally ceased in 1951.

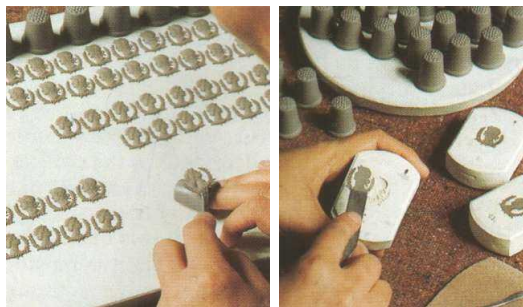


Though factory records show that Wedgwood made thimbles in the late 18th century, it seems that none have survived. With the increase in popularity of thimble collecting, Wedgwood began to produce thimbles again in 1980.

Wedgwood jasperware has been produced since 1774. Jasperware is matt stoneware (ceramic paste) made from Cornish clay that is coloured throughout the body and has an applied decoration or cameo or plaque of a contrasting colour. The most famous jasperware combination is a white cameo design on what has become known as 'Wedgwood blue'. The cameos are hand applied, as they have been since jasperware was first invented.

The first new jasperware thimble produced by Wedgwood in 1980, is the Josiah Wedgwood thimble. It commemorates the 250th anniversary of the birth of Josiah Wedgwood. The thimble is not dated, and the edition was limited to 10,000 pieces worldwide - that type of figure is mind-boggling to collectors in 2007. The presentation box has the dates 1730-1980. Their last official thimble made was for the 1990 Christmas black basalt thimble.

From the photos below the unfired cameos (of Queen Elizabeth) are laid out ready on a board for application. You can see the cameos being removed from the mould and placed ready for application on thimbles. Once fired, the cameos will be white and the thimbles blue.



Wedgwood ceased making jasperware thimbles between 1991 and 1999, reintroducing thimblemaking at the Wedgwood Visitor Centre **only** from 2000, for visitors to Barlaston to purchase. By 2014 the Visitor Centre was closed altogether.

Jasperware or bisqueware thimbles made before 1990 have 'WEDGWOOD ENGLAND' stamped in two lines into the verso. From 2000 onwards, thimbles were again produced sporadically only at the Visitor Centre and have 'WEDGWOOD MADE IN ENGLAND' stamped in three lines into the verso. To add to the confusion for current Wedgwood thimble collectors, from around 2004, some thimbles are again being marked 'WEDGWOOD ENGLAND'. The thimbles made after 2000 were not official Wedgwood thimbles and were made by demonstrators at the Wedgwood factory's Visitor Centre at Barlaston and were really only samples made for demonstration purposes. They were not available commercially anywhere else and were only available for sale at the Wedgwood shop and the Wedgwood Visitor Centre, which were adjacent to each other at Barlaston.



My aim, when I began collecting Wedgwood thimbles, was to own one of each colour jasperware. I am not a collector interested in having complete sets, but there are many collectors who are, and this listing is for those collectors who need to know what thimbles Wedgwood has produced.

According to my calculations there are around 400 different thimbles, in all the colour combinations.

When some Wedgwood thimbles were being produced in limited numbers at the Visitor Centre, it was difficult to keep up with all the new designs and colour combinations, because they were not "official" Wedgwood thimbles, rather whatever colours and cameo combinations were being produced in other lines at the factory at the time and were then sold in the Wedgwood Barlaston Visitor Centre only.

These were then finding their way onto eBay. This meant there was no consistency in naming the specific current cameos or jasperware colours.

Did it make a mockery of collecting Wedgwood thimbles? New mottled or mixed colours were appearing in items from Wedgwood and thimbles of this mixed colour clay were being made at the Visitor Centre for collectors to purchase.

I have recorded the first colour jasperware thimble that came to my attention, with a new cameo rather than choosing a specific colour to display thimbles in the DEMONSTRATION PURPOSES section.

In the descriptions below, unless specified, the cameo or plaque is white.

I was truly blessed to be able to fulfil a long-held ambition in July 2007. I was taken to the Wedgwood factory at Barlaston. For further description and photos see A TRIP TO BARLASTON.

It was sad news indeed to read that in this first week of 2009 of the Waterford-Wedgwood group (also known as **WWRD for Waterford-Wedgwood-Royal Doulton**) were being placed into liquidation. This group included Royal Albert and Rosenthal. Only time will tell what will happen now - especially to the Barlaston factory. THE WEDGWOOD FACTORY IS NO MORE.



figurine of Josiah Wedgwood in white jasperware with a blue plinth

The bone china range of Wedgwood thimbles is out of the range of this study.
See: [Learn more about ... Wedgwood Bone China thimbles.](#)

Known colours of Wedgwood Jasperware thimbles

missing: lavender colour



black basalt
usually has a gold band
which can lose its lustre
over time



blue



brown



cane
(Kamp: corn yellow)



grey



lilac



natural
R: new squatter shape



pink



Portland blue



primrose



sage
(Kamp: soft green)



Saxon or royal blue
showing both backstamps



spruce*
(Kamp: pine green)



taupe – dark



taupe – light



teal



terracotta



turquoise



white



Portland blue and cane/corn yellow
produced for demonstration purposes only

In her thimble catalogues Friedy Kamp uses colour names in Dutch – I have used the translated English name.

The applied decoration or cameo is usually white. In the following descriptions when the cameo is white, it will not be specified.

There are several exceptions to white cameos. Black jasperware has gold painted cameos or plaques and the white thimbles usually have a contrasting blue cameo. The darker Portland blue has also been applied as a cameo to the standard blue jasperware.

I understand that there are now eighteen colours of Wedgwood jasperware with the addition of three colours to the above range. The newest colours are red, chocolate and a lighter shade of taupe.

I know it will not be too long before thimbles are made at the Visitor Centre in these newest colours. Cameos are now made in random colours in the Visitor Centre.

* I understand from the demonstrators that this is not an official colour name



Standard designs

The cameos applied are intricately detailed and it is worth using a magnifying glass to appreciate this detail.

Traditionally, for thimbles made by Wedgwood between 1980 and 1990, the following four designs are standard and may be found on these eight standard colour thimbles:

black with gold, blue, grey, lilac, pink, sage/soft green, Portland blue, and white.

In this period, the Three Graces only appeared in grey.

I have not included all the colours for these four basic designs, just the later known colour varieties that have come to my attention. I have included these colours below each design.

The colour variations – added here – were only made for demonstration purposes at the Wedgwood Visitor Centre, from 2000.



Wedgwood
blue
bust of
Josiah Wedgwood

Others: black on pink – cane/corn yellow



Floral girl
spruce/pine green
girl holding
basket of flowers

This design made up one of the Dancing Hours set produced in 1997, tho it had been in production since the beginning of Wedgwood's thimble production

Others: 3 colours on blue – 3 colours on white – blue on taupe – blue on white

Saxon/royal blue – taupe – teal – terracotta

see also: ANOMALIES



Spinner
sage/soft green
girl with
spindle in her arms

Others: blue on blue – cane/corn yellow – Saxon blue



Shakespeare
sage/soft green

Others: blue on blue – gold on dark blue – Portland blue on blue



Three Graces
grey
three intertwined
women
Others: royal blue on blue

These are some new designs, produced from 1997. The first five are known as "Dancing Hours". They are not official Wedgwood thimbles and may be found in several different colour combinations. They have the 'Made in England' imprint on the verso. Known colour varieties are listed with each.



(1)
cane/corn yellow

Others: sage/soft green – terracotta
issued in blue as part of the
Wedgwood Museum Thimble
Collection series 1997



(2)
Portland blue

Others: blue – sage/soft green – terracotta



(3)
blue

Others: blue on taupe – sage/soft green -
terracotta
issued as part of the Wedgwood
Museum Thimble Collection series
1997



(4)
pink

Others: black – blue – blue on taupe
Portland blue on white – sage/soft green -
terracotta



(5)
pink

Others: 3 colours on blue – 3 colours on
white – blue – sage/soft green - terracotta



yellow
the figure is bigger than the other
figures and was not part of the
original set
Others: black (smaller version)



blue on white
original set of six Dancing hours

Floral girl (L) was already in existence as a Wedgwood design



blue

similar to the dancing hours (5) but this figure is on
a plinth
not part of original set



black

similar to the dancing hours (3) but this figure is on
a plinth
not part of original set

Others: cane/corn yellow - stone - taupe – white on white

Christmas

In 1981, Wedgwood introduced a series of Christmas thimbles. These were produced annually for five years and comprised of a boxed pair of thimbles.

A traditional blue thimble was paired with a thimble of a contrasting colour.

It was this introduction of different coloured Wedgwood thimbles that brought an even bigger interest in their range of Christmas thimbles.

Why were three thimbles produced for 1985?

The series was planned for five years and the black basalt thimble with a gold painted star, was to conclude the series in 1985, making a total of eleven.



1985

with gold band and date on verso is also in gold

A further series of five annual Christmas thimble pairs was then produced, but this time only in the traditional blue jasperware.

Another black basalt thimble was made to complete the series. The motif on this thimble is a gold painted dove.

There is also an ungilded dove or a dove with no olive branch. See OTHERS / DEMONSTRATION



1990

gold band and date on verso is also in gold

Each Christmas thimble has the date in a small white lozenge or plaque on the verso. See DEMONSTRATION for those with no date

There are colour variations that carry no date which were only made for demonstration purposes at the Wedgwood Visitor Centre, from 2000. See DEMONSTATION examples



1981
Snowflake on
 blue
Christmas tree
 on sage/soft
 green



1986
Angel of the Annunciation
 on blue
The Virgin Mary on blue



1982
Christmas bells
 on blue
Robin on holly on
 lilac



1987
Joseph and baby Jesus
 on blue
Shepherds and baby
Jesus on blue



1983
Santa's face on
 blue
Candle on
 primrose



1988
Star over the town of
Bethlehem on blue
The Three Kings on blue



1984
Reindeer on blue
Christmas wreath
 on terracotta



1989
Mary and child on blue
Three Wise Men bearing
gifts on blue



1985
Child on sled on
 blue
Christmas
stocking on pink
Gold star on
 black
 (to conclude 1st
 series)



1990
Virgin, child and donkey
 on blue
Flight into Egypt on blue
Gold dove of peace on
 black
 (to conclude 2nd series)

Kings and Queens of England

This set of 41 was commissioned by the Heritage Collection (issued certainly in Australia) or Calhoun's Collectors Society Inc (Minneapolis, Minnesota USA) in **1980**. 20,000 sets were produced.

The set was issued for the 250th anniversary of Josiah Wedgwood's birth.

The series spans 1000 years of monarchy with 35 kings and six queens. The thimbles are all blue with a white cameo.

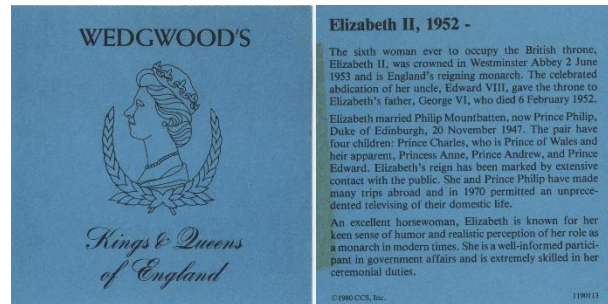
The accompanying rack has the names of each monarch in consecutive order, with a space for the 42nd monarch, Charles III. In September 2022 he ascended to the throne.

Did Wedgwood create thimbles for Charles III back in 1980?

No. They would not have guessed that over forty years was to elapse before he would become King.

By then Wedgwood had been closed for thirteen years.

There is a sticky label with the name of each monarch inside the thimbles.



There are accompanying leaflets with a biographical history of the reign of each monarch.

For colour variations of this set, in production in 2006, see ANOMALIES below.





William I



William II



Henry I



Stephen



Henry II



Richard I



John



Henry III



Edward I



Edward II



Edward III



Richard II



Henry IV



Henry V



Henry VI



Edward IV



Edward V



Richard III



Henry VII



Henry VIII



Edward VI



Mary I



Elizabeth I



James I (& VI)



Charles I



Charles II



James II



William III



Mary II



Anne



George I



George II



George III



George IV



William IV



Victoria



Edward VII



George V



Edward VIII



George VI



Elizabeth II

Queen Elizabeth II

NOT FROM THE KINGS AND QUEENS SET



I

Queen's Portrait

Thimble Collectors Club (TCC) 1986 to celebrate her 60th birthday.



II

A nearly identical thimble has been created for Queen Elizabeth's 80th birthday (commissioned by The Thimble Guild) - the colour is Saxon blue. The monarch is facing in the opposite direction in both thimbles from the Kings and Queens set and there is no laurel wreath.



III

Elizabeth Regina II

sage/soft green

Others: black – Saxon blue on cane/corn yellow

For thimbles for Queen Elizabeth's Diamond Jubilee in 2012, see the COMMEMORATIVES section.

Fairy Tales

set of twelve thimbles are in blue
produced for the Thimble Collectors Club in 1989
drawings for these tales are by Michael Hague
sculpted fairy tale in white bas relief wraps around the thimble





Brer Rabbit



Cinderella



Goldilocks and
the Three Bears



Hansel & Gretel



Jack and
the Beanstalk



Pied Piper



Red Riding
Hood



Rumpelstiltskin



Sleeping Beauty



Snow White and
the Seven Dwarfs



Three Little Pigs



Wizard of Oz

Signs of the zodiac

There are several varieties: blue - blue on Portland blue - blue on white - cane/corn yellow - gold on Portland blue - Portland blue – primrose - sage/soft green

The first sets of twelve were made pre-1990 and were made in Wedgwood blue only.

In the December 2005 issue of The Thimble Guild, there are several new colours of this set. These include pink and terracotta. The others shades available for the zodiac set are primrose and lilac.

Colour variations were only made for demonstration purposes at the Wedgwood Visitor Centre from 2000.

In 2009 a variety of the zodiac thimbles appeared - with the zodiac names in a scroll below the zodiac sign. See OTHERS.



Aquarius
cane/corn yellow



Pisces
sage/soft green



Aries
blue on Portland blue



Taurus
blue



Gemini
pink



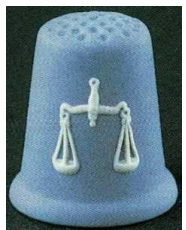
Cancer
blue on white



Leo
gold on Portland blue



Virgo
pink



Libra
blue



Scorpio
gold on Saxon blue



Sagittarius
Portland blue



Terracotta
Capricorn
terracotta

Flowers of the Month

Floral Wedgwood thimbles were made for the USA market in 2004 and are in a set of twelve flowers.

The thimbles are marked 'WEDGWOOD ENGLAND' on the verso
(tho some have "Wedgwood Made in England" just to add to the confusion).

Colour variations were only made for demonstration purposes at the Wedgwood Visitor Centre from 2000.



Carnation
January
(2004)

sage/soft green

(advertised as celadon but it is sage/soft green - as confirmed by Wedgwood)



Violet
February
(2004)
blue



Sweetpea
April
(2004)
Portland blue



Daffodil
March
(2004)
cane/corn yellow



black – blue (2000 larger) – lilac – pink – Portland blue – primrose – sage/soft green – Saxon blue –
spruce/pine green - terracotta – black on sage/soft green – black on terracotta – gold on Portland blue
black on stone – black on teal - black on yellow



Lily of the valley

May
(2004)

white on white



black – blue (2000 larger) – cane/corn yellow – lilac – pink – Portland blue – primrose – sage/soft green
– spruce/pine green - terracotta - gold on black – black on teal – mixed Portland blue & cane/corn
yellow – black on terracotta – black on light taupe - blue on white – black on pink
others: mixed green & cane/corn yellow - stone



Rose
June
(2004)
pink



Others: cane/corn yellow



Rose varieties

There are also three differently-shaped rose designs

blue: commissioned by Thimble Collectors' Club (TCC) 2000
Others: black – black on cane/corn yellow – black on lilac – black on sage/soft green –
black on terracotta – gold on black – pink – Portland blue – sage/soft green – spruce/pine
green – taupe – terracotta
blue rosebud: commissioned by TCC
others: black – cane/corn yellow – Saxon blue
Saxon blue: commissioned by The Thimble Guild to commemorate ten years
since Princess Diana's death



Delphinium
July
(2004)
Portland blue on blue



Gladiolus
August
(2004)
terracotta



Aster
September
(2004)
lilac



Calendula
October
(2004)
black



Chrysanthemum
November
(2004)
blue on white
Others: lavender on cream



Paperwhite
December
(2004)
primrose

Commemoratives

LISTED BY DATE OF ISSUE

Colour variations were only made for demonstration purposes at the Wedgwood Visitor Centre from 2000.



Marriage of Charles and Diana
(1981)
blue
pair of thimbles
profiles of Prince Charles and Princess Diana



Marriage of Charles and Diana
(1981)
lilac
facing profiles with scroll beneath
Royal Wedding July 1981
Prince of Wales feathers on verso



Pope's visit to England
(1982)
blue
Joannes Paulus II on scroll



Royal Birth
(1982)
lilac on white
Royal Birth 1982 on heart



Olympiad XXIII - Los Angeles
(1984)
blue

plaque has the torch bearer with 'Olympiad XXIII'
and 'Los Angeles 1984' in a plaque on the verso
Others: pink – primrose on blue (Wedgwood Collectors Society)



225 years of Wedgwood (1759-1984)
(1984)
blue

features the famous Portland Vase
as well as having dates within the cameo on the
front, the commemorative dates are repeated on
the verso on this thimble

In 1985, the Thimble Collectors Club (TCC)
commissioned a set of 50 thimbles: The
Hallmarked Thimbles of the World's Great
Porcelain Houses
See OTHERS

For a Portland Vase design without the circle see
2008 examples under DEMONSTRATION.



225 years of Wedgwood (1759-1984)
(1984)
teal

rare pair to this commemorative is the teal green
jasperware combined with the 'Floral girl' These
thimbles are also stamped with the commemorative
dates '1759-1984' on the verso



Liverpool Garden Festival
(1986)
blue



Trentham Gardens Quilters Exhibition
(2006)

cane/corn yellow on Saxon blue
Others: black (upside down) – blue (upside down) – black on
white (upside down)



Queen Elizabeth II 60th Jubilee
(2012)

blue
black – black on white
Wedgwood
jasperware
showing maker's mark
commissioned by The Thimble Guild



Other designs

LISTED BY DATE OF FIRST APPEARANCE

colour variations were only made for demonstration purposes at the Wedgwood Visitor Centre from 2000



Josiah Wedgwood
(1980)
blue

Part of the Franklin Mint Porcelain Houses of the World set of 25. Made exclusively for this collection, it bears a portrait of the company's founder, originally modelled in 1782 by William Hackwood

It has erroneously been described as Ben Franklin

Others: pink



Aurora
(early 1980s)
blue

Others: pink – Portland blue (The Thimble Guild July 2005) – sage/soft green – Saxon blue



Harrods
(1984)
blue

Portland Vase
(1985)
blue



The lettering under this vase is different - Est 1759 - and there are no dates on the verso. This is different from the 225th commemorative of 1984. This forms part of the 50 Hallmarked Thimbles of the World's Greatest Porcelain Houses set by TCC.

Swan
(1989)
blue



Commissioned by Thimble Collectors' Club

Others: black – black on cane/corn yellow – black on sage/soft green – black on teal – pink – Portland blue – sage/soft green – Saxon blue – terracotta

Pink Heath
(1990)
pink



Commissioned by the Wedgwood Collectors Society of Australia to commemorate the 150th anniversary of the founding of Victoria

Pink heath is the state floral emblem featured on p57 of Thimbles of Australia

Others: blue – cane/corn yellow

Dove of peace
(1990)

black, with the dove uncoloured



in 1990 the Wedgwood Society
purchased these thimbles for
their members
the date is stamped on the verso
like the Christmas issue
there is a version of a dove with
no date

Others, with no date: black – dark taupe

Hamlet and Ophelia
(date unknown)
blue



each with name in scroll on
verso



Others: black – black on taupe – black on
light yellow

Sydney Opera House
(date unknown)
blue



Made for Demonstration Purposes

LISTED BY APPROXIMATE DATE

As Wedgwood had not produced thimbles in their factory in Barlaston since 2000, the following thimbles have only been made for demonstration purposes in the Wedgwood Visitor Centre.

I never want to give the impression that I don't like or approve the following thimbles – they are included here for completeness, but I want collectors to know the reason for their manufacture and small numbers produced.

The additional colours were probably not produced in the same year.

They had been made in limited numbers - I would hazard a **guess** that is under 8 per design and colour - so they do not form part of the official Wedgwood thimble output.

These thimbles are either marked 'Wedgwood England' or 'Wedgwood Made in England' with no consistency in either use.

The allocated names are arbitrary and are purely descriptive!

In 2011 a set of different insects appeared - there are several different insects arranged in different positions - 21 different ones or combinations - the combinations seem endless.

From mid-2011 I have noticed that some of the thimbles are marked with the maker's initial M.T. - these initials occur on the verso, next to the Wedgwood mark.

no photo

Darwin
(2000)
blue

Bust of Charles Darwin
(Charles Darwin was married to
Emma Wedgwood)



George Stubbs's Horse - rearing
(2009)
Saxon blue
Others: terracotta on black



2000
for the millennium
(2000)
multi-coloured



Horse's Head
(2009)
primrose
Others: black



George Stubbs's 'Frightened horse'
(2004)
terracotta

Others: Saxon blue – terracotta on black



Lion Rampant
(2004)
Saxon blue
commissioned for 60th
anniversary of marriage of
Queen Elizabeth II to Prince
Philip 2007 by The Thimble Guild
Others: black



Britannia Lion
(2005)

black on pink

Others: black on primrose – pink



Lion
(2009)

red on black



Heraldic lion
(2006)

Portland blue

Others: gold on Saxon blue – sage/soft green Saxon blue



Viscount Lord Admiral Horatio Nelson

1758-1805
(2005)

Saxon blue

Others: black on primrose – Portland blue



Stag
(2005?)

terracotta on blue

Others: black, green. terracotta – black on pink – black on primrose – pink terracotta on black



King Tutankhamen
Queen Ankhesenamun

(2005)

gold on black

Queen and King

Others: blue – brown – Portland blue
red on black – terracotta on black
terracotta on cane/corn yellow – white on black



Diana Goddess of the Hunt
(2005)

black

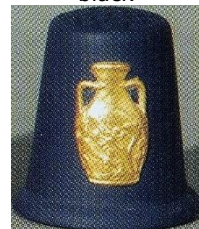
Others: blue – Saxon blue



Julius Caesar
(2005)

black

Others: Portland blue – Saxon blue



Portland Vase
(2005)

gold on dark blue

(commissioned by Dutch Thimble Club)

Others: blue – black – brown – gold on Portland blue – gold on Saxon blue – gold on white – pink – Portland blue – taupe

See also: new squatter shape



Venus and Cupid
(2006)
pink

Others: black - Portland blue - Portland blue on cane/corn yellow - sage/soft green - Saxon blue



Urn
(2009)
black on sage/soft green



Urn with flowers
(2009)
pink
Others: terracotta on sage/soft green



Basket with flowers
(2009)
Saxon blue



Basket with fruit
(2009)
sage/soft green
Others: brown



Seahorse
(2006)
cane
Others: 2 colours on blue - 3 colours on blue - 3 colours on sage/soft green - 3 colours on white - black - black on Saxon blue - black on terracotta - black on white - blue - dark taupe - gold on black - Portland blue - sage/soft green - taupe



Big lily
(2006)
taupe
Others: black on taupe - black on terracotta - pink - Portland blue - sage/soft green - teal



Tiger lily
(2006)
sage/soft green
Others: black on taupe - black on terracotta - lilac - pink - Portland blue - spruce/pine green - taupe



Peony
(2006)
pink
Others: black - black on taupe - black on terracotta - blue - lilac - Portland blue - sage/soft green - taupe



Anchor
(2006)
Portland blue



Clipper
(2006)
Portland blue
Others: blue



Galleon (1)
(2006)
pink
Others: black - sage/soft green



Galleon (2)
(2006)
blue
Others: black on pink - brown



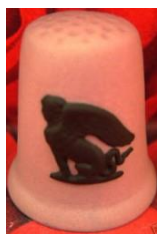
Greek sphinx (woman's head)
(2006)
red on black (facing left)



Greek sphinx (man's head)
(2006)
red on black (facing right)



Greek sphinx on plinth (man's head)
(2009)
black on pink (facing right)



Greek sphinx on plinth
(woman's head)
(2009)
black on pink (facing left)
Others: black on lilac - black on
sage/soft green - blue



Canopic jar
(2006)
red on black
Others: black - black on pink - light
taupe - terracotta on cane/corn yellow



Sphinx
(2006)
red on black
Others: black on sage/soft green - blue



Loyal dog
(2007)
terracotta on cane/corn
yellow
Others: black - black on lilac -
black on sage/soft green - gold
on Saxon blue - Portland blue -
Saxon blue



Apis (Egyptian god)
(2007)
terracotta on cane/corn yellow
Others: blue - gold on Saxon blue
Portland blue - Saxon blue - terracotta
on taupe



Greek winged goddess
(2009)
black on sage/soft green



Liberty Bell
(Declaration of
Independence)
(2006)
sage/soft green
Others: gold on Saxon blue -
Portland blue



Jon French - handpainted
(2006)
red on black



3 colours agate
(2006)
by Jon French



Portland dip
(2006)
by Jon French



Slavery
(2007)
black on yellow
commemorating 200 years since
Abolition of Slavery 1807
"Am I not a man and a brother"
no dates
there is a bone china version of
this thimble
Others: black on pink - pink



Dancing hours
(2007)
black
handpainted by Jon French
six designs with encaustic enamel



Unicorn – standing
(2007)
blue
Others: dark taupe – Portland blue – turquoise



Unicorn – seated
(2010)
black on taupe
Others: black – black on white – blue – dark taupe



Unicorn – head
(2009)
black



Churchill
(2007)
black



Harp
(2007)
black on sage/soft green
Others: gold on black



St George slaying the Dragon
(2007)
Portland blue



Golfer
(2007)
lilac
Others: 3 colours on blue – 3 colours on cream – 3 colours on white – black
black on pink – black on terracotta – blue – blue on cream – taupe



Lady golfer
(2007)
pink
Others: 3 colours on sage/soft green – 3 colours on white – black – black on terracotta – blue – blue on Portland blue – Portland blue taupe



Golf club
(2007)
Portland blue
Others: black – Portland blue



Golf clubs (1)
(2007)
black
Others: Portland blue – stone



Golf clubs (2)
(2011)
blue
Others: 3 colours on blue – black – gold on black



Golf ball
(2007)
black
Others: Portland blue



Mother and child
(2007)

dark taupe

Others: black – blue – /soft green – turquoise



Woman's profile –
(classical)

(2009)

black



Woman's profile – (facing right)
(2009)

Saxon blue on cane/corn yellow

Others: black – black on pink – blue
dark taupe



Woman's profile – (facing left)
(2009)

black

Others: black on pink – Saxon blue on cane/corn
yellow



Woman facing forward
(2009)

pink

Others: Blue on cane/corn yellow
– black – cane/corn yellow



Woman's profile – (Victorian)
(2009)

black on pink

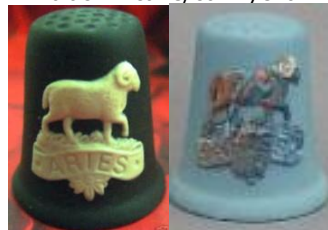


Aquarius
(2009)

black/agate on black

Others: Saxon blue

different from original 1990s Zodiac



Aries
(2009)

black/agate on blue

Others: agate on black – Saxon
blue

different from original
1990s Zodiac



Cancer
(2009)

pink

Others: agate on black – agate on blue
black - Saxon blue

different from original 1990s
Zodiac



Capricorn
(2009)

black

Others: agate on black – Saxon blue

different from original 1990s Zodiac



Gemini
(2009)

black/agate on blue

Others: agate on black – Saxon
blue

different from original
1990s Zodiac



Leo
(2009)

black

Others: agate on black – Saxon blue

different from original 1990s
Zodiac



Libra
(2009)
black

Others: agate on black – Saxon blue
different from original 1990s Zodiac



Pisces
(2009)
black

Others: agate on black – Saxon
blue
different from original
1990s Zodiac



Sagittarius
(2009)
black

Others: agate on black – Saxon blue
different from original 1990s
Zodiac



Scorpio
(2009)
Saxon blue

Others: agate on black – black
different from original 1990s Zodiac



Taurus
(2009)
blue

Others: agate on black – black –
Saxon blue
different from original
1990s Zodiac



Virgo
(2009)
black

Others: agate on black – Saxon blue
different from original 1990s
Zodiac



Bison
(2009)
Saxon blue



Elephant
(2009)
Saxon blue

Others: black – black on white



Eagle
(2009)
Saxon blue

Others: black – black on white – blue
dark taupe – sage



Mounted cupid
(2009)
black on pink



Wildflowers (1)
(2009)
black



Wildflowers (2)
(2009)
Saxon blue



Ganymede Feeding the Eagle
(2010)
terracotta on black



Palms
(2009)
pink
Others: black



Windsor Castle
(2009)
cane/corn yellow



Dragon
(2010)
blue

Others: dark taupe – sage/soft green



Salmon
(2010)
Portland blue

Others: black – gold on Saxon blue



Carp
(2011)
blue

Others: blue (facing other way)



Insects (1) Bee - left up
(2011)
blue

Others: 3 colours on white



Insects (2) Bee - left down
(2011)
gold on black

Others: 3 colours on white – black on white



Insects (3) Moth - right up
(2011)
Saxon blue

Others: black – blue



Insects (4) Moth - right down
(2011)
gold on black



Insects (5) Moth - Dragonfly
(2011)

3 colours on blue
Others: 3 colours on black – 3 colours on white



Insects (6) Butterfly - Dragonfly
(2011)
black

Others: 3 colours on dark blue – blue
Royal blue on blue



Insects (7) Butterfly - Dragonfly
(2011)
gold on black

Others: blue



Insects (8) Dragonfly - right up
(2011)
blue

Others: black – blue on white – brown – dark taupe



Insects (9) Dragonfly - right down
(2011)

gold on black
Others: black



Insects (10) Dragonfly - left up
(2011)
blue



Insects (11) Dragonfly - left down
(2011)
blue



Insects (12) Moths (1)
(2011)
3 colours on white



Insects (13) Moths (2)
(2011)
3 colours on white



Insects (14) Moths (3)
(2011)
3 colours on blue



Insects (15) Moth - Butterfly
(2011)
3 colours on white



Insects (16) Moth - Fly
(2011)
gold on black



Insects (17) Beetle -
Butterfly
(2011)
gold on black



Insects (18) Fly - Beetle (1)
(2011)
3 colours on blue



Insects (19) Fly - Beetle (2)
(2011)
blue



Insects (20) Fly - Moth
(2011)
black



Insects (21) Moth - Fly
(2011)
black



Insects (22) Fly - Moth
(2011)
blue



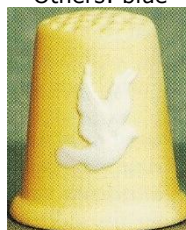
Two girls
(2011)
black
Others: blue



Quatrefoil
(2011)
blue



Orpheus
(2011)
black
Others: blue



Dove
(2011)
primrose
Others: cane/corn yellow -
Portland blue - taupe
no date and no olive branch



Palms - smaller
(2012)
black
Others: black on white



Winged dragon
(2012)
black
Others: sage/soft green



Egyptian headdress?
(2012)
black
Others: blue (signed M T)



Snowflake
(2014)
natural
(signed M T)
new squatter shape



Walking dog
(201?)
blue
(signed M T)
Others: black



Prunus
(201?)
blue
made originally in
primrose, exclusively for
the Japanese market



Khnum (Egyptian ram)
(201?)
blue
Others: agate on blue



Mixed
cane with black



Mottled
blue with pink
hand-indented
heavy rim



Christmas
blue
1981 Christmas tree –
no date



Christmas
spruce/pine green
1981 Christmas tree – no date



Christmas
natural
1981 Christmas tree – no
date
new squatter shape
wide-spaced indentations



Christmas
pine green (Kamp)
1981 Christmas tree – no date



Christmas
teal
1982 robin on holly – no date



Christmas
blue
1982 robin on holly – no
date



Christmas
royal blue
1982 robin on holly – no date



Christmas
gold on black
1982 Christmas bells – no date



Christmas
pink
1982 Christmas bells – no date



Christmas
cane/corn yellow
1983 candle – no date



Christmas
Portland blue/dark blue
1983 candle – no date



Christmas
spruce/pine green
1983 candle – no date



Christmas
pink
1983 candle – no date



Christmas
blue
1983 candle – no date



Christmas
lilac
1983 candle – no date



Christmas
natural
1983 candle – no date
new squatter shape



Christmas
gold on Saxon blue
1983 Santa's face – no date



Christmas
Saxon blue
1983 Santa's face – no date



Christmas
spruce/pine green
1984 reindeer – no date
sold thru The Thimble Guild
Feb 2005



Christmas
teal
1984 reindeer – no date



Christmas
black on pink
1984 reindeer – no date



Christmas
yellow
1984 reindeer – no date



Christmas
royal blue
1984 reindeer – no date



Christmas
terracotta on black
1984 reindeer – no date



Christmas
Saxon blue
1984 reindeer – no date



Christmas
black
1985 Christmas stocking – no date



Christmas
blue
1985 Christmas stocking –
no date



Christmas
dark taupe
1985 Christmas stocking – no
date



Christmas
pruce/pine green
1985 child on sled - no date



Christmas
sage/soft green
1985 child on sled - no
date



Christmas
yellow
1985 child on sled – no date



Christmas
(2010)
Saxon blue
1987 Joseph and baby Jesus
no date



Christmas
(2010)
Saxon blue
1989 Three Wise Men
bearing gifts – no date



Christmas
(2010)
Saxon blue
1988 The Three Kings – no date



Christmas
(2010)
Saxon blue
1988 Star over the town of Bethlehem
– no date



Christmas
(2010)
Saxon blue
1990 Virgin, Child and
donkey no date



Christmas
(2010)
Saxon blue
1990 Flight into Egypt – no date



Christmas
dark taupe
1990 dove – no date



Christmas
black
1990 dove – no date
Others: black with gold



Large bird
blue



Genie's lamp
blue



Portland vase
(201?)
natural
new squatter shape
wide spaced indentations



Crying girl with a dog
black



26 Alphabet letters
(201?)
black basalt



Basket-weave band
(201?)
gold on blue
gilt maker's mark inside



Dancing hours
(201?)
figures around wider-shape with decoration on
apex and a hole in that centre (R)
is it a thimble? Is it a bell?
no – neither - it is a ceiling light pull!!
buyer beware
others: blue – pink – primrose – sage/soft green – teal

Anomalies

These thimbles should never have reached the collecting public - they may be trial thimbles or seconds, but as they exist, I have included them here.

Cameo of the Floral Girl, has not been gilded

The primrose thimbles may have been a trial piece for the Kings and Queens set (this information is from Wedgwood Museum)



ungilded Floral Girl
black on black



colour variation for William 11
primrose



colour variation for Henry 11
primrose

A trip to Barlaston 2007

Living in Australia, I had always wanted to visit the Wedgwood Visitor Centre at Barlaston. I was staying with my thimble friend Vilma in July 2007 and knowing this, she braved the drive from Shropshire to Stoke-on-Trent. The whole journey was a total treat, and this began as soon as we left the motorway and saw the signs to Barlaston, which lies south-east of Stoke. It is such a pretty English village - green with so many trees, adding to the anticipation with its wonderful rural setting.

The actual factory is absolutely huge and the workers' car park shows the vastness of the site. This no longer exists.

As we went to the front of the Wedgwood Visitor Centre, my first glimpse was the huge statue of Josiah Wedgwood, which dominates the entrance courtyard. Alongside is the Wedgwood cafe to enjoy morning tea and even here we were surrounded by Wedgwood's beautiful china.

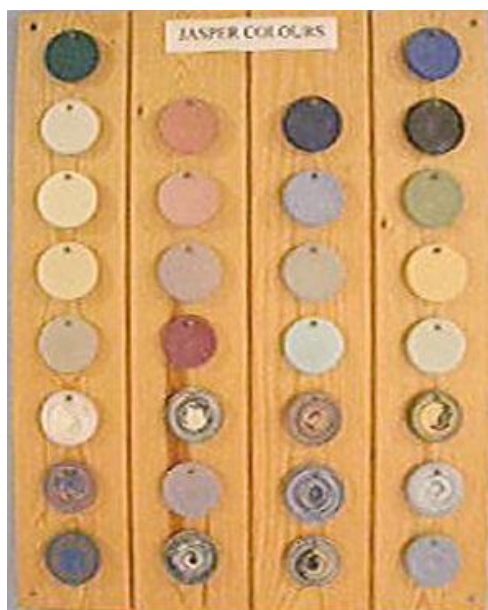
The wonder continued when we entered the small shop that flanks the entrance to the Museum - and I was delighted to spot some thimbles for sale.

Once we'd paid our entrance fee, we were in the Museum with the display of the historic collection of Wedgwood and again sensed the superb quality of attention to detail and I could have spent the rest of the day just feasting on the treasures on display.

The hands-on section was beckoning tho, and this seemed to be the heart of the Visitor Centre. There were various stations each manned by a Visitor Centre staff member. The first was a display of shaping a piece of raw clay on the pottery wheel and it was most interesting to chat and learn the potter's background in the industry. The next person was making small clay balls - to a specific size using a calliper. Later we discovered that once fired, these are multi-coloured beads, which are strung into Wedgwood necklaces - whilst you wait.

And then joy of joys - the thimble section: at least on that day, thimbles had been poured into moulds. Maybe on other days, it would be other moulded items? We spent absolutely ages talking to the demonstrator and seeing how thimbles are made.

For me as the creator of this Wedgwood thimble site, seeing the display board of all the Wedgwood colours - 18 in total at that time - was worth the whole trip. These are Wedgwood jasperware discs displayed on a board. Sadly, the colours are not named, and the demonstrator could name about 16 of the Wedgwood colours.



18 current jasperware colours used by Wedgwood at July 2007
the lower 12 discs are the swirled jasperware colours



original Wedgwood jasperware palette

The next demonstrator works on the Wedgwood cameos. These are supplied from the main factory and can be placed onto whatever items other demonstrators are making for display to visitors. We were able to make our own small plaques and under supervision place our chosen cameos onto the plaque. These were then fired and despatched by mail to us: all for a fee.

There were also demonstrators applying decals to bone china ware and we were also able to watch two handpainters. Both take commissions and we watched a handpainted plate taking shape for a client who had supplied a photo. The other was a painter, painting Wedgwood china figurines and one can commission the actual colours of the clothing etc. when on a visit to the Visitor Centre.

It was all so overwhelming that we needed a lunch break but were soon back for more and our ticket allowed multi-entry into the Museum.

We were running out of time so had to adjourn to the factory outlet shop where all manner of Wedgwood merchandise is for sale - no thimbles. These were only available for purchase - there were only around 6-ten for sale - from the smaller shop alongside the museum entrance.

There was no time to take the small visitor's train to visit the Wedgwood factory itself or to see the special bi-centennial display of the Abolition of Slavery merchandise by Wedgwood.

There was a lot of construction underway around the Visitors' Centre: a new museum. By now the new Wedgwood Museum is complete and you will have a different experience from Vilma and me when you visit Barlaston and Wedgwood.

Most of the old established English potteries have closed or moving offshore - like Royal Doulton to Indonesia and beyond. Now Wedgwood's factory too has closed having been demolished and all that remains is the new Museum and the shop - so treasure your Wedgwood thimbles as there will be no more with the Visitor Centre demonstration area also having closed!



Sue dwarfed by Josiah Wedgwood, whose statue was erected in 1957



massive teacup at the Museum's entrance



raw clay thimbles in their picture mould with a pink thimble to show the colour they will become



time for the thimbles to be un moulded



preparing to remove the thimbles from the mould



Sue in the tearoom



Sue making a Wedgwood plaque



Sponsors' board for the new Wedgwood Museum - under construction. Sponsors come from all over the world



by now this Museum should be complete?

References

- Susan Jean Gowan *Thimbles of Australia*. 1998
 Friedy Kamp *Vingerhoed Nieuws* 2006-2007
 Marion A Nugent *Wedgwood thimbles* *TCI Bulletin* April 1985
 Ken Richardson *Thimbles indexed* *Canadian Coin News* 21 October 1980
 Richard Tames *Josiah Wedgwood; an illustrated life of Josiah Wedgwood 1730-1795*. 2nd ed. 1984

Contributors

Rachel Belmore | Linda Bennett | Marta Valencia Betran | Joanna Blackie-Sew Many Bits | Anne Blacktopp
 Jenny Bockel | Bunny | Sue Burt | Sue Christensen | Sheila Clarke | Lurene Connor | Sarah Constantine | Mary Craft
 Joy Carlsen Earles | Sharon Flynn | Teresa Fowler | Katherine Hannaford | Erika L Harrison | Margaret Hickling
 Debby Hoover | Margaret Jackman | Denise Jenkins-Welsh Thimblers | Susan John | Chris Jones | Gladys Junge
 Shaun Kahn | Friedy Kamp | Elaine Kingston | Nicola Kissane | Doreen Lilley-Pricklepin | Masanori | Karen Page
 Heather Pead | Daria Phair | Elaine Pollard | Bruce Read | Marina Shcherbatyuk | Karen Stoner | Val Torrington
 Kim Trinder | Kate Twomey | Anita Ulack-Chiarizia | Francoise Vidal | Ann Watson | Mave Wiskin | Jenny Yugas

This listing of Wedgwood jasperware thimbles does not purport to be complete or accurate in all aspects.

Rather it invites comment and contribution to add to our knowledge. My thanks to the contributors.

EMAIL thimbleselect@bigpond.com TO SHARE YOUR KNOWLEDGE

© Sue Gowan
 August 2002