

Modern British sterling silver thimble makers still to be identified

1960 – 2022

These thimble makers' – or sponsors' - thimbles are images from my archives. None of these makers' names appear in the list of silver makers for any of the British Assay offices: most of the initials (with no other details) appear in the following website

[Silver Makers Marks](#)

Do you know who any of these thimble makers are?

A&C – AB (2) – ACW – AEC – ALW – BJK – B-L – BMS – CCSG – CJ - CJF – CJM – CN – COG – CT – DB
DH DHJ – DMR – DRH – EKS – FWB – GPS – HBS – HT – HW - JDP (1957) – JFB – JMK – JND – KEH&S
KK&I - KMH - LAQ – LBW LI – MA&S – MJET – MJT – MKT – NB – PC – PJH – PKG – R&BJC – RGS – RL
RL^D – RP - RSW – S&D SAH – SM – SRS – TLTD – TWAEC – VM – VML – WMS

See their lovely thimble creations

The listing is in the order of the last initial, which is probably the last name, in keeping with the main topic, where the maker's name is known

I can transfer them to those pages when the maker's name is identified

The assay office is listed where known, as well as an assay date

****** Makers cannot be identified because of GDPR = General Data Protection Regulations
(these regulations prevent Assay offices giving out the person's name as they have not given prior permission as they registered after 1975)

We may never know these names

Thimbles by the initials of the thimble maker/sponsor

A&C



1994

London

clasp hands

assay marks are stamped upside-down

MA&S



1981 925
Birmingham
import mark
made by **Julius Wengert** of Pforzheim Germany

AB - i



1993
Sheffield
Bronte Society Centenary 1893-1993
B S separated by feathered pen

AB - ii



2002 925
London
import mark

DB



1984
Birmingham

FWB



1999 925
Edinburgh
millennium mark
piercings along rim



1999 925
Edinburgh
millennium mark

JFB



1982
London
etched fairy amongst grass stalks with butterflies
smooth apex

NB



1969
London

AEC**



1984
London
applied stylised flower on smooth sides

PC - i



1989
Birmingham
applied daffodils

PC - ii



1993
Sheffield
Whitby Abbey
Whitby jet in apex
see also: Ralph Weston

R&BJC



1978
London
Celtic knot

TWAEC



2002 925
London
commemorating Queen Elizabeth's golden jubilee

CJF**



1995
London
import mark
enamelled applied pansies
made by **Julius Wengert** of Pforzheim Germany



1995
London
import mark
applied bluebells
made by **Julius Wengert** of Pforzheim Germany

CCSG



1970/1977
London
large sized thimbles
no indentations on flat apex

COG



1982
Birmingham
Christmas 1982 with reindeer



1982
Birmingham
Easter 1982 with daffodils



1984
Birmingham
Christmas 1983 with stylised tree

PKG



1979
London
applied crude figures
crudely hand-indented

DH



1985
London

DRH



1985
Birmingham
enamelled flowers on finely stippled ground

KMH



1982
Sheffield
gilt applied abstract design
concave apex smooth



1982
Sheffield
9ct

PJH



1986
Birmingham
hand indented

SAH



1975

Birmingham

applied stylised flowers on stippled surface

KK&I



1978

Birmingham

LI



1999 925

Birmingham

Blue John stone in apex
very tiny mark

CJ



1985

Birmingham

marriage of Prince Andrew to Sarah Ferguson 1986
peep in apex by **Woodsetton**

DHJ



1978 9ct - 9.375
London
garnets set in around rim

BJK



1984
Sheffield
Blue John



1987
Sheffield
Blue John



1989
Sheffield
Malachite



1989
Sheffield
Onyx

JMK



1989
Birmingham

B-L



1981
Birmingham
Christmas 1981 with bell and holly



1984
Birmingham
Christmas 1984 with Three Wise Men



1984
Birmingham
Easter 1984 swimming ducks

RL



1981
London
CD Royal Wedding St Paul's 1981

RL^D



1987 925
Birmingham
import mark
made in Portugal

VML



1979
London
two distinctive Celtic twisted bands

CJM



1977
Birmingham

SM



1992
Birmingham

VM



1983
Edinburgh
hand beaten surface

CN



925
Cyprus
not assayed
R: name lettered upside down - may not be British made

JDP



1957
London
stylised trees design at rim
rare date for this period

RP



1976

LAQ



1985
Birmingham
blue enamelling

DMR



1978
London

BMS



2003
London

EKS



DTS International Conference 2017 (Dorset Thimble Society)
not assayed

GPS



1981
London

Prince Charles Lady Diana Spencer 29th July 1981

HBS



1988
London

beehive-shaped with applied bees
wooden thimble holder with an applied bee

KEHS



1979
Birmingham
plain brushed surface
mark poorly struck

RGS



1982
London

S&D



1987 9ct - 9.375
Birmingham

SRS



London
applied stylised flowers with pearls

WMS



1983
Birmingham

TLTD



1987
Birmingham
OLD BUSHMILLS



1987
Birmingham



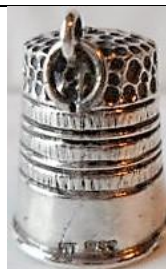
1987
Birmingham
HARRODS lettered over QE2 (Cunard cruise liner)

CT



1988
Birmingham

HT



1977
suspension loop attached at edge of apex

MJET



1981
Birmingham

MJT



London
applied gilt leafed plant, mouse and bee
hand-beaten surface

MKT



1996 925
London
import mark
applied elephant
made in Thailand

ACW



1979
London

ALW



1977 L: jubilee mark
Birmingham



1977
Birmingham

HW



1986
London
handmade with applied butterfly

LBW



1982
Birmingham

RSW



1972
Birmingham
rough finish with abstract applied designs

These marks have no corresponding thimble – do you have a thimble marked with these British maker's marks still to be identified? Please share

ACB (Birmingham 1984) – **AM** (London 1985)
CLTD (enamelled Birmingham 1985) – **CMA** (Sheffield 1977) – **GB** (Birmingham 1985)
KMH (9ct Sheffield 1982) – **KMK** (London 1990) – **MMH** (silver gilt London 1981)
MW (Birmingham 1983) – **SRS** (London 1979) – **ST** (Birmingham 1988) – **TOLTD** (Birmingham 1982)

The list of **Contributors** may be found in the A-H listing

This listing of Modern British thimble makers still to be identified does not purport to be complete or accurate in all aspects.

Rather it invites comment and contribution to add to our knowledge. My thanks to the contributors.

EMAIL thimbleselect@bigpond.com TO SHARE YOUR KNOWLEDGE

© **Sue Gowan**
May 2022