

Brass advertising thimbles

INCLUDING OTHER BASE METAL THIMBLES

Most thimble collectors will know of aluminium advertising thimbles, which were produced in their millions, mainly in the 1920s and 1930s. There are thousands of different advertising brands available and it would be such a difficult topic for me to tackle - specially to find photos. I do have a database of different aluminium advertisements on thimbles and there are currently 1350 listed. Most of these thimbles originate in the USA, advertising American products and services.

Most aluminium advertising thimbles have a colour around the band, which emphasises the name of the product being advertised, as the raised lettering is left clear of colour. Some have coloured apices - known as 'glass' tops - these are just coloured pieces of plastic which usually matches the colour on the band.

Brass advertising (including promotional or marketing) thimbles on the other hand are found far less frequently - now numbering **171** different adverts. They would have been produced earlier than the aluminium ones - I don't know when - my guess would be from the 1880s onwards to the 1920s, after which aluminium thimbles were so much cheaper to produce. They were made in far fewer numbers and tho more durable than aluminium, not as many have survived. There are very few brass US brands on thimbles, the preponderance being made for British and other European products.

When I began this research, I would have guessed that there were more British products advertised than European - the reverse is true - there are more French and German products!

Most brass advertising thimbles are made of just one colour of brass, with no coloured band - the exception is some of the French thimbles: they have muted colours on the bands.

Lettering also varies from country to country or the length of the advertising slogan - most are in UPPER case. Occasionally the lettering is in cursive. Unless specified, the lettering is raised and there is a solid raised rim.

I have tried to indicate in which country the thimbles were made = this is the most difficult information to find: even more so, the manufacturer. With excellent new reference texts being published in France (Michel Painsonneau) this should be remedied with time. Many of the British brass advertising thimbles were made by Charles Iles of Birmingham. Their factory closed in 1990. Most of their thimbles have a striated or milled patterning behind the lettering. Do you know any of the other makers of advertising brass thimbles? Were all the rimless ones made by the same manufacturer?

It is rare to find a size number on brass advertising thimbles. When there is a size number, the thimble was made later than the non-sized examples ie 1900 onwards.

Appropriately for thimble collectors, a large number of advertisements are for sewing threads, sewing machines, needles and fabric. I wonder how they were distributed? Were they free as giveaways or did one have to collect coupons? To me there is nothing lovelier for my collection than a patinaed brass advertising thimble.

Have you noticed how many of these century old brass thimbles reflect the norms of that era? A commentary: laundry products - farm machinery - cleaning products - manual work where new products were aimed at easing their lives: mainly of women (delightfully there is one advertising corsets)

I have included other base metal advertising thimbles that are neither brass nor aluminium, including steel and cupro-nickel advertising thimbles - they are rare.

It is difficult to know what the metal makeup of brass or brass-plated thimbles is. John von Hoelle defines brass as "a generic term for a group of alloys made of copper and zinc. The more zinc, the yellower the color; the more copper, the redder." Tombac is a type of brass and they are included in this topic - they are Austrian-made by Settmacher Bros of Vienna. This factory closed in 2005.

Occasionally there are brass advertising thimbles which form the top or lid of **sewing kits**. I have only included these when the thimble additionally has the advertisement lettered on the thimble.

See the example for 'Use Hudson's Soap'. I have consulted Sandy Woodward's authoritative work 'Pocket sewing kits' and there are very few examples where this occurs.

I have tried to follow the lettering of the advert ie upper or lower case. Apologies for ignoring umlauts, and French diphthongs and accents=I have only included them when I know that they appear on the thimble.

The translation from Arabic advertisements causes more problems tho and the translations are only approximate. Please help if you have any knowledge,

Always check in more than one place in the alphabetical listing below - for many of the French advertisements it is often difficult to know where the advertisement begins and ends e.g. "Lave tout Persil" or "Persil lave tout". If you have found the original advertisement - please share. I have now tried to use the first word after the *, to help me with the order of the words. This is then the first word of the advertisement - sometimes the asterisk is just a large dot.

For **silver advertising** thimbles, see "Learn More About Silver Advertising Thimbles".

The thimbles are arranged alphabetically by the first letter of the advertising slogan, including "The ...", "Use ..." which are listed in the T or U sections. When there are initials at the start, I have placed them at the beginning of each section e.g. C.W.S. is placed at the beginning of the C section.

"ABASCO" DÉS PUBLICITÉ

topic = ?



red band

ACEITE RICOLT

topic = OIL



AUSTRIA
Settmacher

green lacquered band



AUSTRIA
Settmacher

tombac silver-plated lacquered maroon band
ribbed rope-like rim

1920

(description Groiss)

ACME

topic = MERCHANT

(USA supermarket or store, founded in Philadelphia in 1891)



ACMR^s
topic = ?



worn dark green band

ADLER-Nähmaschinen
topic = SEWING MACHINE FROM GERMANY



GERMANY
vertically ribbed rim



GERMANY
vertically ribbed rim



ALDERMAN SEWING SILK
topic = SEWING THREAD



vestiges of red band
ribbed rope-like rim



ALFA-LAVAL / ALFA LAVAL
topic = FARM MACHINERY



GERMANY
has hyphen
with stars patterning
ribbed rope-like rim



no hyphen
no rolled rim

Amsterdam Couture

topic = CLOTHING



bronze-coated brass



"ANCEL" CRÈME

topic = DESSERT



FRANCE
Usines de Navarre

ANCEL LEVURE D'ALSACE

topic = YEAST



FRANCE
Usines de Navarre
green band



FRANCE



FRANCE
Usines de Navarre



FRANCE



narrow blue band



ANKER NAAMACHINE-MACHINES A COUDRE

topic = SEWING MACHINE FROM GERMANY



bilingual text in Dutch and French
ribbed rope-like rim



ASBRO

topic = NEEDLECASE

(barrel-shaped wooden cases, made in Germany)



ENGLAND
pronounced rim



BACKIN Du DR. OETKER

topic = BAKING POWDER

(German multinational company, founded 1891)



red band



BARBOUR'S LINEN THREAD

topic = SEWING THREAD

(thread made in Lisburn, Northern Ireland)



ENGLAND
Charles Iles



1784-1884 trade card



BEMBERG

topic = MANUFACTURER
(USA fabrics)



FRANCE
blue band
advert name repeated
vertically ribbed rim



BIERE KARCHER

topic = ALCOHOL (BEER)



vertically ribbed rim



Bleu RECKITT / BLEU RECKITT

topic = LAUNDRY PRODUCT



FRANCE



blue band
upper- & lower-case lettering



worn blue band
upper-case lettering



**BLUE CROSS TEA
TE CRUZ AZUL**

topic = TEA



incised lettering
in English and Spanish
with stars patterning



BONUX

topic = LAUNDRY PRODUCT

(made by Proctor and Gamble for the French market from 1958)

thimble sometimes included in the washing powder box as a marketing tool



FRANCE
Usines de Navarre
silver-plated steel



BRASSO POUR METAUX

topic = POLISH FOR METAL



FRANCE
Usines de Navarre
1910s



FRANCE
R: squared apex giving straighter sides



blue band



no rim to this excavated damaged example



BRINK'S CAFE

topic = CAFES

café in Los Angeles

Café owned by John Brink who died in 1915



black band



Main dining room

Brink's Cafe

Los Angeles

(painting by Dwight Goss c.1910)

BRÜHL-HANDARBEITEN

topic = MERCHANT

(handicraft/needlecraft by Bruehl in Berlin, Germany)



sides seem quite straight-sided?
vertically ribbed rim



red band
vertically ribbed rim

BRUN-LEA WINCEYETTE / BRUN LEA WINCEYETTE

topic = FABRIC



ENGLAND
Charles Iles
R: no hyphen
L: with hyphen



BrunLea
advertisement
Burnley's 1951
Festival of Britain
commemorative
booklet

BULL DOG GUINNESS

topic = ALCOHOL (BEER)



vertically ribbed rim



Bushells RICH Tea

topic = TEA

(made for the Australian market)



tho the band is red
in ignorance, it has been added after manufacture

C.M.S Cotons à broder

topic = SEWING THREAD



C.M.S Handarbeitsgarne

topic = HANDICRAFT YARNS



blue band

C.M.S Waage Seide

topic = SILK SEWING THREAD



C.S. OSBORNE
topic = INDUSTRIAL TOOLS



USA
Nickel-plated brass
tailor's

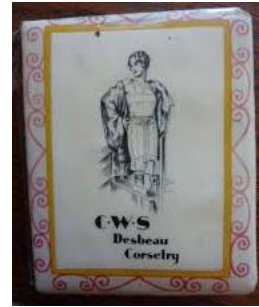


available in 2022

C.W.S. DESBEAU CORSETS
topic = CORSETS



worn dark blue or black band



C.W.S. TEA
topic = TEA



ribbed rope-like rim and four stars



R: vertically ribbed rim



1937 advertisement



Câblé ASTRE D'OR D.A.è
topic = SEWING THREAD

(French thread made by D.A.é (Delespaul Ainé = Delespaul the Elder or Senior))



FRANCE
worn green band



FRANCE
pale green band

Câblé AU PINGOUIN D.A.è

topic = SEWING THREAD

(French thread made by D.A.é (Delespaul Ainé = Delespaul the Elder or Senior))



FRANCE



Câblé AU PINSON.C.F.

topic = SEWING THREAD



worn pinkish band



1939 advertising calendar

CABLE 6 FILS A.U SANGLIER

topic = SEWING THREAD

(French)



FRANCE
worn green band



FRANCE
Usines de Navarre
strong bands of striations



FRANCE
worn green band

Câblé LOUIS d'OR
 topic = SEWING THREAD
 (French)



FRANCE
Usines de Navarre
 brown band
 bands of thicker striations



FRANCE
Usines de Navarre
 blue band



FRANCE
 narrower band
 bands of narrower striations



FRANCE
 different band



FRANCE



FRANCE
 various blue bands



FRANCE
 bands of narrower striations



FRANCE
 narrow bright blue band
 bands of narrower striations



FRANCE
 worn blue band



FRANCE
 blue band



FRANCE
 blue band
 bands of narrower striations
 tapering shape



FRANCE
 worn blue band
 rare in tailor's thimble shape
 ribbed rope-like rim



spool container

CALVERT

topic = ALCOHOL (WHISKEY)

see also: Switch to Calverts



GERMANY U.S. Zone

1945-

this thimble would have fitted into
a sewing kit with extra ridge

R: lettering inverted



thimble is stamped CALVERT and the inside lip of the sewing kit
is stamped

"ARTGIFT" MADE IN GERMANY US. ZONE

The black lettering on the case reads:

SWITCH TO CALVERT · IT TASTES BETTER! BLENDED WHISKEY
86.8 PROOF ·

64% GRAIN NEUTRAL SPIRITS · CALVERT DISTILLERS CORP
NYC



CARL & ANNE JANSEN INTERNTIONAL INSURANCE EXPRESS

topic = INSURANCE



THE NETHERLANDS

Anne is a Dutch thimble collector
including a tailor's thimble version

CARL RONNING'S KAFFEE

topic = COFFEE



GERMANY

Gabler

using one of their gadget Magneto thimbles

lettered D.R.G.M. N° 332084

black band



CEYLINDO TEA

topic = TEA

see also: Sterling silver Advertising thimbles



ENGLAND

Charles Iles

lettering over vertical striations



CENTAUREA + BLUE

topic = ?



ENGLAND

Charles Iles

lettering over vertical striations

patterned rim

CHAUSSURES BALLY

topic = SHOES



FRANCE
no rim



Chocolat DELESPAUL-HAVEZ

topic = CHOCOLATE

(manufacturers, established in France in 1848)



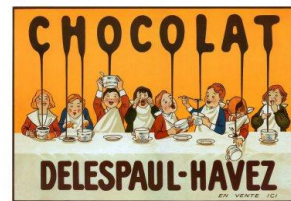
FRANCE
Usines de Navarre
grey band



FRANCE
Usines de Navarre
worn red band



FRANCE
Usines de Navarre



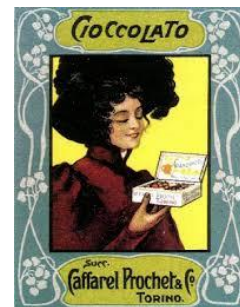
CIOCCOLATO

CAFFAREL PROCHET-TORINO

topic = CHOCOLATE/COFFEE



worn green band



CLARK & CO. LTD. PAISLEY.

topic = SEWING THREAD

see also: Use Clark's O.N.T Thread



ENGLAND
Charles Iles
no rim

lettering inscribed on rim
under Greek key band



Clark & Co thread ball

CLARKS O.N.T COTTON
 topic = SEWING THREAD
 (O.N.T stands for "Our New Thread")



trade card



COINTREAU / COINTREAU LIQUEUR / LIQUEUR COINTREAU

topic = ALCOHOL (LIQUEUR)

all these thimbles fit into the top of a sewing kit with the extra raised band



FRANCE
 worn red band
 1910s



the name is pressed in &
 forms the top of the sewing kit
 alongside



sewing kit advertising Cointreau
 Liqueur
 painted brass



Colonial QUALITY SAMSTAG'S NY / NEW YORK

topic = BUTTONS & SAFETY PINS



ENGLAND

Charles Iles

L: no rim

lettering over striations

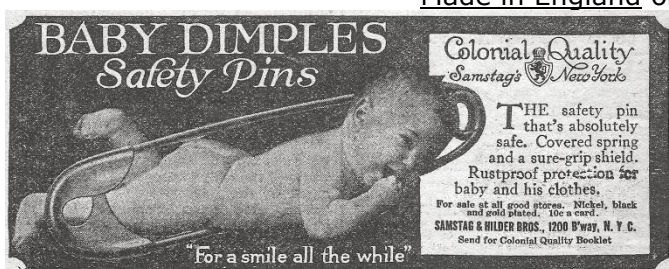
with unknown mark of a lion rampant in a shield

+ size mark

two versions = with and without rolled rim

tho made for a New York company, the rim is marked

Made in England or English



CONROY'S PURE COFFEE

topic = COFFEE



ENGLAND

Charles Iles

lettering over vertical lettering



Conservas LINO DA SILVA

topic = TINNED FISH

Francisco Maria Lino da Silva, Lda of 114e Rua General Gomes, Freire, Setúbal, Portugal were packers of canned fish in olive oil and in business from 1918-1965. Advert lettered in Portuguese.



ribbed rim



CO-OP FOR DRAPERY
topic = MERCHANT
(British Co-operative Movement)



ENGLAND
Charles Iles



COTTON BOLL
topic = SEWING THREAD
(thimbles available online in 2018)



nickel
size 9

COUSEZ AVEC L'AIGUILLE SCIENTIFIQUES

topic = NEEDLES

(made by Kirby Baird & Co Ltd of Redditch)

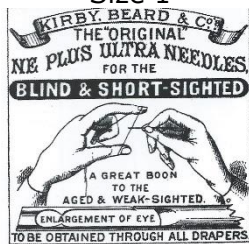


FRANCE

nickel

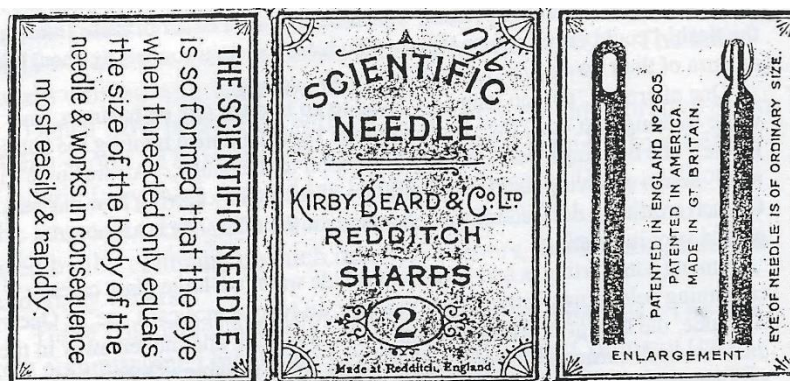
no rim

Size 1



MANUFACTURERS OF
PINS, NEEDLES, HAIRPINS and FISH-HOOKS
Of all Descriptions
LONDON: 115, Newgate Street, E.C.
PARIS: 75, Boulevard des Sebastopol.
FACTORIES
BIRMINGHAM: Bradford Street.
REDDITCH: Ipsley Street.
SEND 3d STAMPS FOR SAMPLE PACKET.

Sylvia's book of macrame lace. 1885



CRÈME ECLIPSE

topic = POLISH (FOR SHOES AND METAL)

(manufactured by the Société Générale des Cirages Français, founded in 1881 in Lyon)



FRANCE

Usines de Navarre



FRANCE

purple-blue band



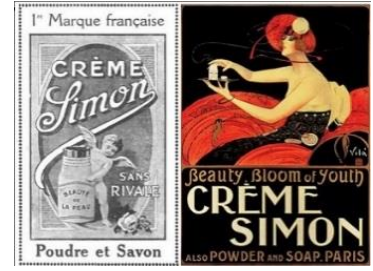
CRÈME SIMON
topic = BEAUTY PRODUCT



FRANCE
Usines de Navarre
1920s



FRANCE
Usines de Navarre
1920s



2 advertisements from 1918 & 1920s

CURA DOLOR DE C.
DISCOS E E
topic = ?



DENTOL DENTRIFICE
ANTISEPTIQUE
topic = TEETH PRODUCT



FRANCE
Usines de Navarre



DOS AMERICANOS CAFES
topic = COFFEE



red band
no rim

DRINK BROWN'S PURE ALES
topic = ALCOHOL (BEER)



ENGLAND
Charles Iles
lettering over vertical striations

ECREMEUSE TITANIA

topic = DAIRY CREAM SEPARATOR

see also: Titanic Separator



GERMANY

1910s

ribbed rope-like rim



GERMANY

ribbed rope-like rim

ECREMEUSÉS DIABOLO

topic = DAIRY CREAM SEPARATOR

(Swedish-made)



FRANCE

Usines de Navarre



FRANCE

turquoise-green band which matches the colour of this separator



ECRÉMEUSES VÉLOX

topic = DAIRY CREAM SEPARATOR
(Swedish-made)



GERMANY



Enrilo

topic = CHOCOLATE
(Spanish)



lettered over textured band
patterned rim
L: silver-plated?



ENTREMETS ANCEL

topic = DESSERT



FRANCE
red band



worn red band

EQUITY SHOES

topic = SHOES

(the company went into liquidation in 2008)



ENGLAND
Charles Iles
lettering over striations



FABRICATION FRANÇAISE

topic = MADE IN FRANCE



FRANCE
Usines de Navarre

FELDMAN JEWELRY STORE 206 Pike St Seattle

topic = JEWELLER
(founded 1871)



AUSTRIA
Settmacher Bros
tombac (R)

Fil à coudre CRESPEL

topic = SEWING THREAD
(French)



FRANCE
green band
upper- & lower-case lettering



Fil à la TETE de CHEVAL

topic = SEWING THREAD
(French)

all these thimbles fit into the top of a sewing kit with the extra raised band



FRANCE
green band
upper & lower case lettering



FRANCE
turquoise-blue band
upper & lower case lettering
1900s



FRANCE
upper & lower case lettering



FRANCE
turquoise-green band
all upper-case lettering



FRANCE
turquoise-green band
Upper- & lower-case lettering



FRANCE

very rare to find the green wooden sewing kit
with the matching brass advertising thimble
+ a horse's head + J.T.P.F
1920s-1930s



FRANCE

+ a horse's head + Thieret

"FIL AU CHINOIS"

topic = SEWING THREAD
(French)



FRANCE

mauve pink band



FRANCE



FRANCE

steel

lettering over stippling



FRANCE

Usines de Navarre



Fil AU CONSCRIPT D.A.é

topic = SEWING THREAD

(French thread made by D.A.é (Delespaul Ainé = Delespaul the Elder or Senior))



FRANCE
Usines de Navarre

FIL DE LIN PELOTES D'OR

topic = SEWING THREAD

(French)



FRANCE
Usines de Navarre



GARIBALDI

topic = BISCUITS/COOKIES



ENGLAND
Charles Iles

lettering over vertical striations
patterned rim

could this thimble have been issued for the visit to
Tyneside in England by Garibaldi in 1854?

Gebruikt Buisman's G.S.

topic = COFFEE

("G.S" stands for Gebrande Suiker = burnt sugar, used as a syrup in coffee)



FRANCE
Usines de Navarre
lettered over horizontal striations



lettered over horizontal striations



GEER CO. COAL
topic = HOME HEATING
(since 1926)



USA
lettered in blue on paper

GERZON
topic = MERCHANT
(Dutch department store)



worn patterned rim



postcard

GLOSSO "Pour métaux"
topic = POLISH FOR METAL



FRANCE
red band



orn red band

"Glücksklee-Keks"
topic = BISCUITS/COOKIES
(German milk producer, Bärenmarke Co)



ribbed rope-like rim

GOLD THIMBLE SCOTCH

topic = ALCOHOL (WHISKY)

(Hiram Walker in the USA distributed this Scotch - 1950s)



engraved lettering
5, 8 etc size



Grants

topic = MERCHANT



USA

lettering engraved in cursive on plain wide band

Greenville Furniture Co. Greenville, S.C.

topic = MERCHANT



USA

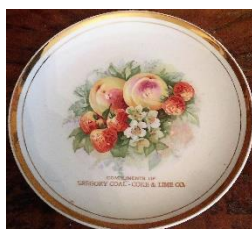
Gregory Coal, Coke & Lime Co

topic = HOME HEATING
(based in Marshalltown Ohio)



GERMANY
lettering on black band

white metal
lettering on green band
different font



"Compliments of Gregory Coal ..."

GRIFFITHS' TEAS

topic = TEA
(one of the first distributors of Ceylon tea and coffee, founded in 1879)
(Griffiths made in Sydney, Australia 1939-1945)



maroon band
no rim



old tea warehouses have found a new life
L: Flinders Street, Melbourne – R: Surry Hills,
Sydney (built in 1915)

Gritzner

topic = SEWING MACHINE FROM GERMANY



lettered over vertical striations
silver-plated?



Gütermann[®] Nähseide / GÜTERMANN'S NÄHSEIDE / NAEHSEIDE

topic = SEWING THREAD
(German)

see also: Soie à coudre GUTERMANN



light blue band
upper- & lower-case lettering
with Gütermann's triangular trademark in blue
vertically ribbed rim



upper case lettering with "Naehseide"
vertically ribbed rim



black band
upper case lettering
with Gütermann's triangular trademark in black
vertically ribbed rim



upper case lettering
with Gütermann's triangular trademark
vertically ribbed rim



ashtray



red velvet and metal advertising pincushion
made in Germany with German lettering



product contains spools of blue thread



Did you know your Gutermann threads contain a needle case within the spool of thread?

GÜTERMANN'S SEWING SILK

topic = SEWING THREAD
(German)



GERMANY
vertically ribbed rim



worn red band
with Gutermann's triangular trademark in red
vertically ribbed rim

HAG

topic = ?



nickel silver
size 2



straight-sided

Heutzutage Quieta

topic = COFFEE MERCHANT
(in Germany)

see also: Quieta als Kaffee / QUIETA in der tat delikat!



ribbed rope-like rim

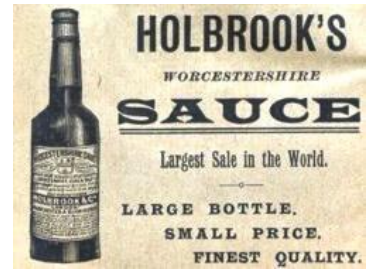


HOLBROOK'S SAUCE

topic = SAUCE



ENGLAND
Charles Iles



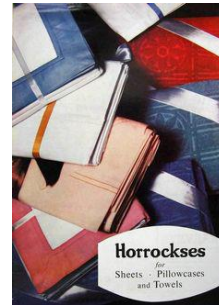
HORROCKS'S for VALUE

topic = FABRIC



GERMANY

lettered over cross-hatching
this thimble was probably made by **Gabler**
lettered Foreign in indentations
highly patterned rim



HORROCKS'S WAREHOUSE

topic = FABRIC



ENGLAND

Charles Iles

lettering over vertical striations

HOTEL FRITZ REUTER STAVENHAGEN

topic = HOTEL
(in Germany)



AUSTRIA
Settmacher

nickel silver with blue "glass" apex & Greek Key band

HOVIS BREAD

topic = BREAD

see also: Sterling silver advertising thimbles



ENGLAND
Charles Iles

lettering over vertical striations



ENGLAND
Charles Iles

lettering over vertical striations
silver-plated



HUSQVARNA MOD. I. MOLANDER

topic = SEWING MACHINE FROM SWEDEN



nickel silver?

I NEEDA

topic = BISCUITS/COOKIES



GERMANY

this thimble was probably made by **Gabler**
as there is the 8-petalled maker's mark on the
apex

Patent is lettered on the verso

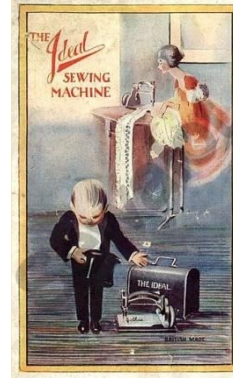
IDEAL

topic = SEWING MACHINE
(made in their London factory)



GERMANY

nickel plated brass
with a band of stars to L & R of lettering
differing indentation sizes
L: ribbed rim – others are smooth
size 3



“J. Schutz & Sohn - Biberach”

topic = CLEANING PRODUCT
(still operating in Germany)



GERMANY

vertically ribbed rim
with stars patterning

J. VAN GORP – Carnot 170 – “DÜRKOPP” naaimachiennen

topic = SEWING MACHINE MERCHANT
(Germany)



ribbed rope-like rim



Jabon "EL OSO"

topic = SOAP



ribbed rope-like rim



JABONES BARANGÉ

topic = LAUNDRY PRODUCT
(Barcelona Spain)



ribbed rope-like rim



this may be a sewing kit?



JOE OPTICIAN JEWELRY St Joseph, Mo.

topic = JEWELLER



USA

K.B Cº BIRMINGHAM

topic = NEEDLES
(made by Kirby Baird & Co Ltd of Redditch)



ENGLAND
Charles Iles
plated brass?
beaded rim

KABIS AEHGAR (?)

topic = ?



ribbed rope-like rim

KOCH'S EIERMACCARONI

topic = PASTA



ribbed rope-like rim



KÜHNE-SENF

topic = MUSTARD

(Carl Kühne, Germany – founded in 1722)



ribbed rope-like rim
size 9?



product

LACIS

topic = LACE

(online store - still in operation in California in 2018)



heavy brass – tailor's
pronounced plain rim
available online in many sizes

LAMPE MAZDA

topic = LIGHTING

(the extra thicker rims indicate these thimbles formed the top of a sewing kit)



yellow lettering on red band
aluminium but rare enough to include here for
completeness



lighter metal?

LESSIVE-PHÉNIX

topic = LAUNDRY PRODUCT



FRANCE
Usines de Navarre
1930s



green band



blue band



lighter blue band



LESSIVE SURPRISE

topic = LAUNDRY PRODUCT

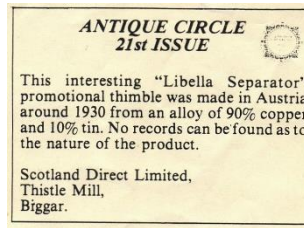


FRANCE
Usines de Navarre
pale blue band

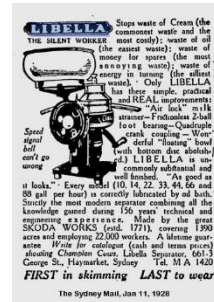
LIBELLA Separator
 topic = DAIRY CREAM SEPARATOR



FRANCE
Usines de Navarre
 vertically ribbed rim
 1930s



certificate of authenticity



1928 advertisement from
The Sydney Mail

LINDEBOOM Frou Frou
 topic = BISCUITS/COOKIES



HOLLAND
 no rim



vertically ribbed rim



LION NOIR ARGENTIL
 topic = POLISH



FRANCE
 red band



LION NOIR-CROMA
 topic = LAUNDRY PRODUCT
 (dyes)



FRANCE
 red band
 size '2' lettered on apex



LIPPMAN'S JEWELERS Since 1889 311 Market St. Harrisburg, Pa.

topic = JEWELLER



USA

LISTER SEPARATOR

topic = DAIRY CREAM SEPARATOR

(introduced in 1903 by R.A. Lister & Co Ltd, Dudley in Gloucestershire)



ENGLAND
Charles Iles
no rim



Lister Cream Separator. Introduced 1903
R.A. Lister & Co. Ltd., Dudley, Glou.

Ludwig Beck München

topic = DEPARTMENT STORE FROM MUNICH GERMANY

(still in business 2021)



highly patterned rim



LUTONA COCOA

topic = COCOA



GERMANY
this thimble was probably made by **Gabler**
lettered Foreign
vertically ribbed rim



FRANCE
blue bands – R: narrower
vertically ribbed rim



M RECORT MERCERIA

topic = MERCHANT
(drapers)



SPAIN

ribbed rope-like rim

MAGNESIA S. PELLEGRINO

topic = MEDICINAL
(laxative & antacid)



AUSTRIA

Settmacher Bros

tombac - blue band
red "glass" apex
1930-1935
vertically ribbed rim



AUSTRIA

Settmacher Bros

tombac silver-plated
lacquered purple band
1920
(description Groiss)
vertically ribbed rim

AUSTRIA

Settmacher Bros

ribbed rope-like rim



AUSTRIA

Settmacher Bros

tombac silver-plated lacquered
red band
1920
(description Groiss)
vertically ribbed rim



AUSTRIA

Settmacher Bros

tombac silver-plated lacquered
maroon band
maroon "glass" apex
1920
(description Groiss)
vertically ribbed rim



AUSTRIA

Settmacher Bros



red narrower band
ribbed rope-like rim



green band
ribbed rope-like rim

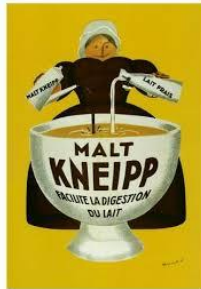


Malt Kneipp

topic = COFFEE MERCHANT
(in Paris)



white lacquered band
forms part of a grey metal sewing kit



MAZAWATTEE TEA

topic = TEA



ENGLAND
Charles Iles

lettering over very wide band of vertical striations
ornate rim



MEET ME IN THE ARCADE AT D.M. BROWN'S

topic = MERCHANT

(store in Dundee, Scotland - 1900s)

("Where the Luncheon and Tea Rooms are")



ENGLAND

Charles Iles

no rim

includes a monogram or logo for DMB on the verso

MERCHANT & MILLS

topic = MERCHANT

(drapers & haberdashers in Rye, East Sussex)

these thimbles were founded in 2010 by Carolyn Denham & Roderick Field



tailor's open ended thimble
interestingly lettered
pronounced plain rim
these thimbles are modern brass



the sewing room



these tailor's thimbles available on the Merchant & Mills website

ΜΕΤΑΞΩΤΑ "ΧΡΥΣΑΙΔΟΣ"

topic = SEWING THREAD
("CHRYSAIDOS" SILK)



AUSTRIA
Settmacher Bros
tombac - red lacquered band
vertically ribbed rim
Greek lettering
1930



green "glass" apex
vertically ribbed rim



Miele

topic = APPLIANCE



GERMANY
Gabler
cursive lettering over stippling
c.1920-1930



narrower band
cursive lettering
c.1920-1930

MORO-GENOVA

topic = ?



tombac
worn blue band
vertically ribbed rim

MUNDLOS

topic = ?



name repeated
vertically ribbed rim



N.Bonten 1820 Dordrecht

topic = MERCHANT
(Dutch)



b&w phot



NAAIMACHINES LEWENSTEIN

topic = SEWING MACHINE FROM GERMANY



AUSTRIA

Settmacher Bros

tombac - red lacquered band
red "glass" apex
vertically ribbed rim



worn blue band
vertically ribbed rim



NATURAL SILK TEXTILES CREASE LESS

topic = SEWING THREAD



AUSTRIA

Settmacher Bros

tombac
vertically ribbed rim
lettering in Arabic

C possible translation: National silks from Kariz al Youser Harayer Tabiah Kareez al Youser)

R possible translation: TO SEW A DRESS BY HAND - with two bands of Greek key

NAUMANN NAHMASCHINEN

topic = SEWING MACHINE FROM GERMANY



lettering over horizontal ribbing

NEWHOUSE

topic = ?



no rim

OLD BUSHMILLS

topic = alcohol (IRISH WHISKEY)

see also: Sterling silver advertising thimbles



smooth sides, heavy rim

sterling silver identical example dated Birmingham 1987, exists with maker's mark **TLtd**

OVB Cutlery Our Very Best Is The Very Best

topic = CUTLERY



white metal

PERSIL LAVE TOUT

topic = LAUNDRY PRODUCT



FRANCE
Usines de Navarre
worn blue band



FRANCE
Usines de Navarre



PHARMACIE DE HAUSSY

topic = PHARMACY
(France, still in operation)



blue band

the double pronounced bands suggests that this was the top off a sewing kit

PHILLIPS ANNIVERSARY

topic = ALCOHOL (BEER)



blue band
ribbed rope-like rim



POST CREDIT JEWELERS 1130 State St. Erie, Pa.

topic = JEWELLER



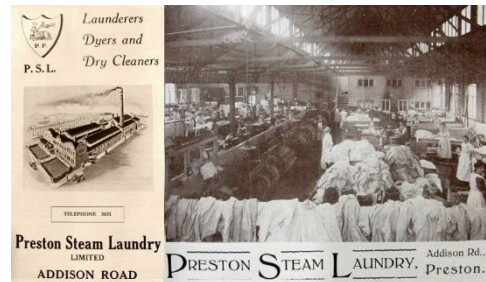
USA

PRESTON STEAM LAUNDRY

topic = LAUNDRY



ENGLAND
Charles Iles
vertically ribbed rim



"Putz mit Immalin"

topic = POLISH



blue band
vertical ribbed rim



Quieta als Kaffee

topic = COFFEE MERCHANTS
(in Germany)

see also: Heutzutage Quieta



GERMANY
black band
straight-sided
ribbed rope-like rim



worn black band
ribbed rope-like rim

QUIETA IN DER TAT DELIKAT !

topic = COFFEE MERCHANTS
(in Germany)



ribbed rope-like rim

REICHEIS HALL

topic = MANUFACTURER
(Austrian pasta firm – still in business today)



GERMANY
straight-sided
with company logo of an eagle

ROGERS JEWELERS 317 7th St. Des Moines, Iowa

topic = JEWELLER



USA

RUDOLPH'S Dependable Jeweler SINCE 1906

topic = JEWELLER



USA

S.C.W.S. TEA

topic = TEA



ribbed rope-like rim

SANADON FA DONNA SANA

topic = MEDICINAL
(women's health)



green band
straight-sided
vertically ribbed rim



green band
vertically ribbed rim



SARTEL / sartel
topic = SEWING THREAD



FRANCE

advert name repeated
thicker rims indicate this thimble formed the top
of a sewing kit
1910s



blue lettering on white band
all lower-case lettering
post-WWII thimble indentations
aluminium – rare enough to include for
completeness

SCHNEEHAASE SEIFENPULVER
D. REINHARDT STUTTGART

topic = LAUNDRY PRODUCT



GERMANY

R: vertically ribbed rim
L: straight-sided with ribbed rope-like rim



SHRIMPTON AND SON
topic = NEEDLEWORK TOOL



Steel
size 4



ribbon threader simplex PPat12493_21 RD682585

SINGER VARRÓGÉPEK

topic = SEWING MACHINE
(Hungarian)



SINGER SEWING MACHINES

topic = SEWING MACHINE



unusual advertisement placement – the Singer logo is placed on the apex



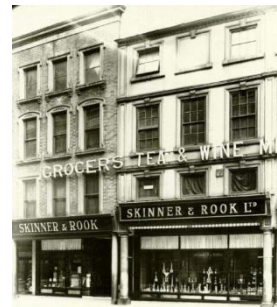
SKINNER & ROOK

topic = MERCHANT
(they were wine merchants in Nottingham, England)



ENGLAND
Charles Iles

lettering over vertical striations



SMITH'S KOFFIE EN THEE

Groningen, The Netherlands
topic = COFFEE TEA
(Dutch)



Soie à coudre GÜTERMANN / GUTERMANN

topic = SEWING THREAD
(German)

see also: Gütermann's ...

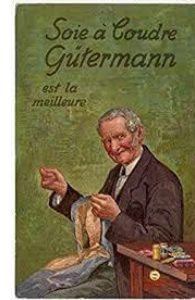


FRANCE

with umlaut on GÜTERMANN
with Gütermann's triangular trademark in blue
vertically ribbed rim



without umlaut on GUTERMANN
with Gütermann's triangular trademark
vertically ribbed rim



SPIGOL

topic = SPICES
(French since 1876)



FRANCE



worn red band



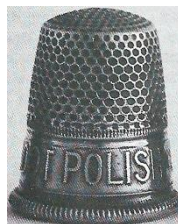
SUNBEAM POLISH

topic = POLISH



HOLLAND

worn blue or black bands
vertically ribbed rim



ENGLAND

Charles Iles
vertically ribbed rim
b&w photo



SUROL der Essig

topic = VINEGAR
(made by Carl Kühne, in Germany)



vertically ribbed rim



SWITCH TO CALVERTS try a thimble-full

topic = ALCOHOL (WHISKEY)

see also: Calvert's



USA

T.MATHEWS & CO. LTD. LEICESTER ENG. & NEW YORK. U.S.

topic = ?



ENGLAND

Kirby Baird & Co (K.B.C°)

aluminium

#7

THE BEEHIVE LTD

topic = ?



ENGLAND
Charles Iles

THE PRUDENTIAL – LIFE – INSURANCE

topic = INSURANCE

millions of the base metal thimbles were made



USA
nickel plated brass
Scovill Manufacturing Co



USA
brass
lettered Made in the U.S.A
Scovill Manufacturing Co
the brass ones are less common but still plentiful



USA
nickel silver
Scovill Manufacturing Co



USA
nickel plated brass
lettered Made in the U.S.A
Scovill Manufacturing Co



TIGER

topic = ?



tailor's thimble – size 4
lettered upside down which faces the sewer
brass-lined steel

TITANIA SEPARATOR

topic = DAIRY CREAM SEPARATOR

see also: Ecremeuse Titania



ribbed rope-like rim



UNION CHOCOLADE HAARLEM

topic = CHOCOLATE
(Dutch)



HOLLAND
red band
ribbed rope-like rim



USE CLARK'S O.N.T. SPOOL CO

topic = SEWING THREAD
(O.N.T. – Our New Thread)
(thimbles produced before 1952 which is when Clarks and Coats merged)

see also: Clark & Co Ltd Paisley



ENGLAND
Charles Iles
with floral pattering



USE HUDSON'S SOAP / USE HUDSON'S SOAP

topic = SOAP

From Aldridge, I learnt that Hudson's were a 19th century Lancashire firm and appears to have finally been merged into part of the Unilever empire in the 1960s



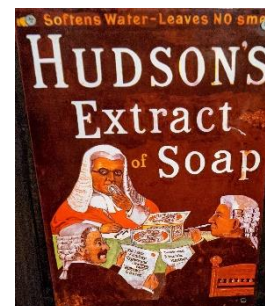
J.R.G.S Ltd
this thimble would have fitted
onto a sewing kit
lettering over vertical striations



narrow band
higher copper content?



ENGLAND
Charles Iles
lettering over vertical striations





flat apex



ENGLAND
Charles Iles

lettering over vertical striations
rare aluminium included for completeness



poorly struck example



ENGLAND
Charles Iles

lettering over vertical striations
blue band (tho this may have been overpainted?)
rare aluminium included for completeness



brass sewing kit
lettered HUDSON'S SOAP



USE MORRALL'S NEEDLES

topic = NEEDLES

there are also thimbles of brass and other metals lettered Abel Morrall, sometimes with their trademark of a gryphon. These are brands not advertising thimbles



ENGLAND
Charles Iles

cupro-nickel over striations



USE VICARS' 'LUSTRINE'

topic = KNITTING THREAD



ENGLAND
Charles Iles

lettering over vertical striations



USINES DE NAVARRE

topic = MANUFACTURER

(metal factories in Navarre, France, who produced many of these brass thimbles)



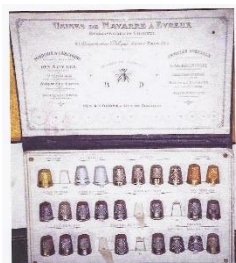
FRANCE
red band



FRANCE
Usines de Navarre



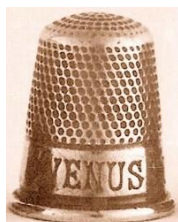
strong pink band



thimble with 'U N' mark

VENUS SOAP

topic = SOAP



no rim



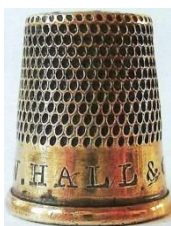
1895 advert

W. HALL & CO

topic = NEEDLES

(these needlemakers were based in Studley, Redditch in the UK)

Their trademark of an elephant appears on many of their products – tho not on the thimbles



ENGLAND
Charles Iles

lettering engraved



ENGLAND
Charles Iles
brass-lined steel



mahogany counter advertising chest



knitting needle brass gauge

"ZEBRA" Pour Fourneaux

topic = POLISH FOR GRATES



FRANCE
Usines de Navarre



References

- Elizabeth Aldridge *Thoughts on thimbles*. Part X. 1983-1986 (unpublished but issued with TCI Bulletin)
Christina Bertrand *Brass thimbles* (TCI). 1986
Frederique Crestin-Billet *La folie des des a coudre*. 2003
Frederique Crestin-Billet *Ouvrages de dames: mercerie, broderie*. Catalogue 2005
Franz Groiss *Thimble factory in Vienna founded 1863*. 1990
Edwin Holmes *History of thimbles*. 1985
Adrienne de Smet *De Vingerhoed in het kunstambacht*. 1992
Norma Spicer *Equity Shoes The Thimble Society* winter 2009
Kay Sullivan *Needlework tools and accessories: a Dutch tradition*. 2004
The Thimble Society (of London) catalogues 1981-2009
Sandy Woodyard *Pocket sewing kits*. 2006

Contributors

Christina Bertrand | Sue Caesar | Ros Forster | Elaine Graveston | Brian Hall-Weavers' Triangle Trust
William Isbister | Ann Jones | Ray Nimmo | Ro Olbricht | Elaine Rogers | Wolf-Dieter Scholz | Norma Shattock
Leonard Smith | Willy Swart | Sue Wilson

With advertising thimbles, it is preferable to have the entire slogan showing, so as many views as you can share would be appreciated - thank you!

This listing of Brass advertising thimbles does not purport to be complete or accurate in all aspects. Rather it invites comment and contribution to add to our knowledge. My thanks to the contributors.

EMAIL thimbleselect@bigpond.com TO SHARE YOUR KNOWLEDGE.

© **Sue Gowan**
January 2009