

Modern British sterling silver thimble makers

1955 – 2022

I think it's time to showcase the skills of the modern British silversmith who has produced thimbles over the last sixty years. With a small output, by comparison with the silversmiths of yesteryear, these thimbles are largely handmade or machined in non-factory settings.

Many of the thimbles produced were made as commemoratives – for British royalty milestones – Easter or Christmas etc. None were produced in quantity, except for James Swann and Son (from Ray Coggle) (JS&S), the handpainted enamelled thimbles by Peter Swingler (PS) and Swann Thimbles (from Frank Jones) S(T) who are out of the scope of this topic – their output is simply too large to feature here. I have also ignored British enamelled thimbles unless the enamelling only forms a small embellishment.

Silversmiths are only featured here once the makers name has been established. I have unknown thimble makers identified only by initials in my archives.

They are included in the additional topic Modern British silver thimble makers still to be identified.

An invaluable source of these photos is from the original catalogues of The Thimble Guild, in Scotland (1983-2018) and Thimble Society of London (1981-2009). The information on new artists was at their fingertips at the time of their catalogues printing.

Apologies for the poor quality of many of the photos from the original catalogues.

The silversmiths are arranged in alphabetical order of their last name. Please share clearer photos to make this the worthwhile database it needs to be, to record these thimbles for posterity. I have included the place where the thimbles were created but not the assay office. Further biographical information is not as relevant to me – I'd rather the thimbles did the talking. I do think it's interesting to show photos where they are available. Further information on these silversmiths as thimblemakers is contained in my topic Makers Marks on British Thimbles.

From 1976, all assay marks must be registered every ten years. I wonder how many of the following silversmiths have needed to do this.

You won't find any Chester assay marks in this section as the Chester Assay Office closed in 1961.

As I create this topic I am awed by the beautiful and imaginative designs. Some show the great skill and delicate touch of the silversmith – but may not have been intended to be used for sewing. Interestingly, also I note that many have the hallmarks running vertically down the thimbles. Many have plain polished surfaces, with no indentations, which makes this possible. After a while, some of the thimble designs seem so similar but the makers marks are definitely different! As in earlier times, the makers marks may not actually be those of the maker!! My aim is to list the thimbles by the hallmarked makers name – once these are identified.

It would be a wonderful search to chase as many of these makers for your sterling silver collection. ENJOY the hunt!

I have already covered D I Dormon Brailsford and Kay Thetford Kendall, two modern British silversmiths, with their stand-alone topics, so they are not replicated here. Peter Swingler joined these topics in June 2017.

I know who the following three thimble makers are but have no photos of their thimbles. If you have photos, please share. Or please fill gaps where I don't have many photos – the more there are, the better.

CJB (Clifford John Barber) – PJM (Merriman Silver Ltd) - WW (Whitehill Silver & Plate)

There are now **154** modern silversmiths' thimbles illustrated here - with over 1300 different images of their thimbles – astounding! 41% of these thimbles were produced in the 1980s, the heyday of thimble-making.

The assay office is recorded when known. From 2000 all British sterling thimbles had to have 925 as part of their assay hallmark. I have added this in where known, to aid where there may be no hallmark date.

I have not encountered any assay marks for British sterling silver thimbles with either a 2017 (there is now one example) nor a 2018 or 2019 mark.

Happiness is finding some new British thimbles with a 2020 and 2022 hallmark!

This reaffirms my feeling of sadness that thimble making using precious materials has ended in Britain

William Adams Ltd (WA)

Birmingham



1982

Birmingham

Charles George Alexander (CGA)

Isle of Man



1981

London for Isle of Man

vertical hallmarks

London import mark

rope-like rim

Ammonite (ALtd)

Glamorgan Wales

This Welsh company is based in Glamorgan, south Wales. They marketed their Easter and Christmas thimbles thru The Heritage Collection based in Bristol, for distribution in the UK, USA, Australia and South Africa etc

There is a set of British national floral emblems created in 1978

The 1975-1978 thimbles were cast – the later issues (1980-1984) were die-formed and feel less substantial
Other makers marks encountered on the later thimbles are COG and B-L, but these makers marks are yet to be identified. Their output includes 9ct gold examples and gold-plated silver



1975 1977
Birmingham
Celtic Knots



1978
Birmingham
Daffodils
Welsh national floral emblem



1978
Birmingham
Shamrocks
Irish national floral emblem
different from 1982 issue



1978
Birmingham
Thistles
Scottish national floral emblem



1977
Birmingham
Welsh Spoons
some have hallmarks in the apex



1978
Birmingham
Welsh Spoons
9ct gold



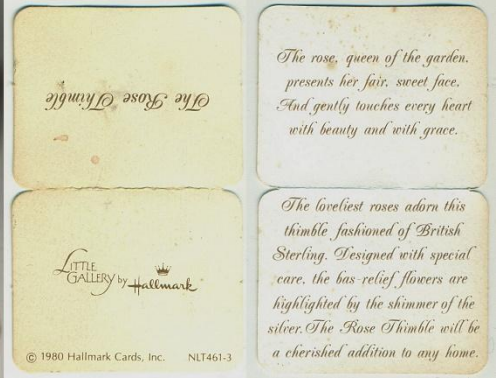
1978
Birmingham



1978
Birmingham
Daffodils
+ daffodil on apex



1978
Birmingham
Easter
daffodils



1980
Birmingham
Stemmed Rose
for Hallmark Cards – marketed by *Little Gallery*



1981
Birmingham
Daisies
with shadow of green



1981
Birmingham
Christmas tree and holly



1981
Birmingham
Christmas bells



1981
Birmingham
commemorating the Marriage of Prince Charles
with Prince of Wales feathers
+ silver gilt



1981
Birmingham
commemorating the Marriage of Prince Charles
with St Pauls Cathedral



1982
Birmingham
acanthus leaves



1982
Birmingham
Christmas



1982
Birmingham
Easter
rabbits



1982
Birmingham
My Valentine



1982
Birmingham
Primroses
silver-gilt



1982
Birmingham
Shamrocks
different from 1978 issue



1984
Birmingham
Easter
lilies



Birmingham
Lilies



SILVER
similar to 1978 Easter Daffodils
no makers marks etc



SILVER
similar to 1982 Easter bunnies
no makers marks etc

Aprilis (AS)

Devon

Aprilis seem to use a second makers mark (A Ltd) – different mark from Ammonite Ltd



1979

Birmingham

vertically stippled surface

Argyll Silver (AS)

Northfield Birmingham



1988

turret or castle shape



2002

Edinburgh

925

commemorating Queen Elizabeths Golden Jubilee
using the 2002 jubilee hallmark on apex as part of the design
these thimbles were made by Julius Wengert of Pzorzheim, Germany
R: squat shape

Vincent J Ashworth (VJA)

Leppington Malton North Yorkshire



1993
London



Vincent Ashworth, Wolds Silver,
Leppington, Malton,
North Yorkshire

Asprey (A&CoLtd)



1986
London
mouse on apex

Kenneth Baguley (KB)

Baguley & Sons



1981
London

Simon J Beer (SJB)

Lewes Sussex



1989
Sheffield
Ellis family crest

Anita Bell Page (ABP)



1979
Sheffield
inscribed H.S.



1980
Sheffield
applied stylised flowers

Adrian Gerald Sallis Benney (AGB)

Reading

1 April 1930-26 June 2008

opened his first workshop in Whitfield Place in London. He moved to Beenham House in 1963 in Reading, which was his home and workshop until 1999. He then moved to Wiltshire

He was awarded the Royal Warrant by HM the Queen as goldsmith and silversmith in 1974, followed by a Royal Warrant from HRH the Duke of Edinburgh and HM the Queen Mother in 1975 and in 1980

HRH the Prince of Wales

Professor of Silversmithing, Royal College of Art and Jewellery 1974-1983



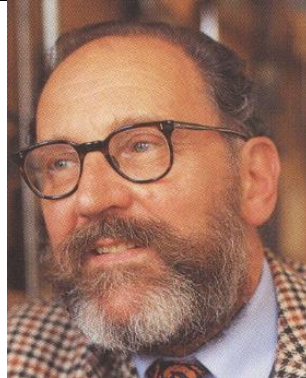
1977

London

commemorating Queen Elizabeths Silver Jubilee

stippled surface

similar design to **MN&WP**



John H Berry (JHB)

Tenbury Wells Worcestershire

Fellow of the Institute of Professional Goldsmiths

similar design to **WHM - WM**

www.jhberry.co.uk



1979

Sheffield



Michael Bickerton (JMB)

Jewellery Quarter Birmingham

established for 50 years – in 2018

www.bickertonjewellery.com



1981

Birmingham

commemorating the Royal Wedding of Lady Diana and Prince Charles
pierced sides with C D 1981 and bells



Bishton's Limited (BL^D)

Birmingham



1978

Birmingham

gilt lining – made in Portugal
Birmingham import mark

Bishtons Limited (B(S))



1991

Birmingham

Blue John Gem Box (BJGB)

Matlock Bath



1988
Sheffield
pink stone apex

Michael Allen Bolton (MAB)

Cornwall

b.1938-d.2016



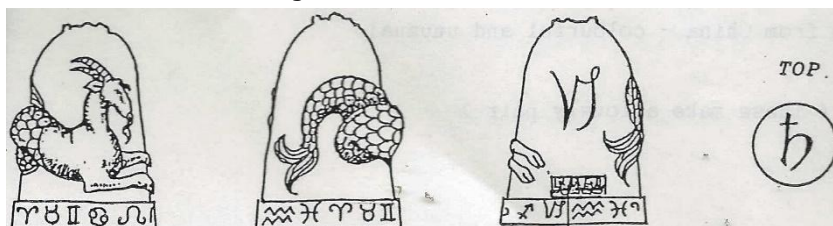
1975
London
sterling silver gold and opals



1984
London
sterling silver and applied gold flower
good weight



1989
London
Capricorn sign of the zodiac in relief
designed by artist Joyce Hargreaves
all signs of zodiac were created





Boodle & Dunthorne (B&D)

Liverpool



1978
London

Christopher S Bowen (CSB)



1978
London
crystalline finish and rim
slightly flared rim



1983
London
stippled finish
slightly flared rim



1997
London
commemorating Golden Wedding of
Queen Elizabeth
also available in silver-gilt and 9ct
gold
slightly flared rim
commissioned by Thimble Society of
London - with sketch
limited to **800**



1997
London
'Elizabeth and Philip 1947 - 1997'
silver-gilt

Aidan J Breen (AJB)

Dublin
gold and silversmith



1985 1986

Dublin with Hibernia mark
St Brendan's boat scene – lower different boat



1985

Dublin with Hibernia mark
St Brigid's Cross



W I Broadway (B&Co)



1981

Birmingham

with an inscription *18 years in S.L.C*



1983 1990
Birmingham



1984 1989 1990 1995 1997 2000
Birmingham
similar design to **E&Co - nt - MK - DP**



1988

Birmingham

Thomas Buchanan (TB)

Cardenden Fife Scotland



1979

Edinburgh

stone in apex
marks on inner rim

Clive Norman Bullivant (CNB)

Clive trained in 3D design specialising in metal and ceramics and ran a successful Silver workshop before becoming a teacher of Design and Technology up to A-level. Three times winner of Goldsmith Craft and Design Council awards for silversmithing design and seven international product design awards Clive now works with handcrafted pewter producing pieces inspired by nature and travel (Bridge Arts in Uckfield)
he also creates handpainted enamelled sterling silver pill boxes



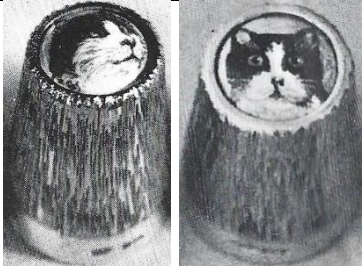
1982
London

vertically stippled surface
handpainted enamelled apex with cottage scene

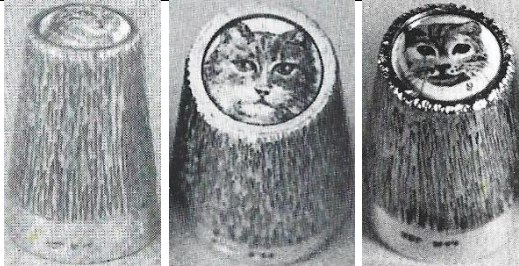


1982
London

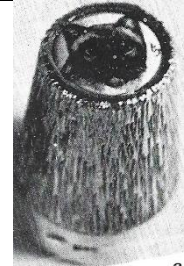
vertically stippled surface
handpainted enamelled apex with leopard or cheetah



handpainted enamelled apex with
black cat



handpainted enamelled apex with ginger
cat



handpainted enamelled apex
with Siamese

Clive Edward Burr (CB)

London

Clive Burr studied under Gerald Benney at the Royal College of Art and set up a workshop in 1979 with fellow graduates Jane Short and Alistair McCallum. In 1983 they moved to Old Street and were joined by Rod Kelly and Sheila McDonald. By 1988 Clive had set up by himself in Berry Street where he stayed until he moved into the new Goldsmiths Centre in 2012.



1981
London

commemorating the Marriage of Prince Charles
this thimble also exists with a different mark: **RL** (R)
this is the engraver's mark of Robert Legg
lower: silver-gilt



Timothy Joseph Burtwell (TB)

Tring Hertfordshire

This silversmith is using children's story characters as a theme



1979 1989

London

hand-indentations



1983 1997

London

Piglet and Pooh

both are sterling silver thimbles



1987 1992

London

Christopher Robin with Winnie the Pooh and umbrella in the rain



1991

London

mice amongst the oak leaves

R: silver-gilt version – weight 13 grammes



925
Winnie the Pooh
with balloon - honeypot



London
bear with building blocks

Desmond A Byrne (DAB)

The Castle Yard The Parade Kilkenny Ireland

gold and silversmith

his shaped thimbles were commissioned by Fern Hill



1985
Dublin
turret or castle shape
vertical hallmarks



1996
Dublin
Kilkenny turret or castle shape



2001
Dublin with Hibernia mark
two cats with furry surface



Dublin
925
applied cats

Philip Campbell (PDAC)

Mull Silver

Tobermory Isle of Mull Hebrides Scotland

Philip also created pewter and wooden thimbles

see also **TCG**



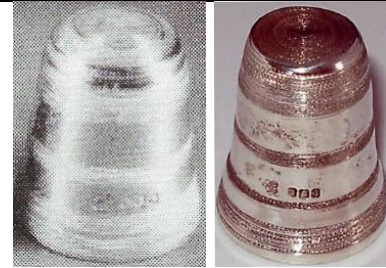
1980
Edinburgh
applied heart and crown



1982
Edinburgh
applied thistle on band



1983
Edinburgh
applied thistle on band



1983
Edinburgh



1983
Edinburgh
Dove of Peace To my Love message
applied dove



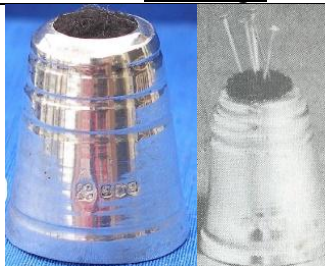
1983
Edinburgh
plaited-type rim



1983
Edinburgh



1984
Edinburgh
frosted bands



1985
Edinburgh
pincushion apex
limited to **100**
R in b&w: showing pins



1985
Edinburgh
criss-cross bands



1986
Edinburgh



1986
Edinburgh
lightly pressed floral design



1986
Edinburgh
commemorating the marriage of Prince Andrew
vertical hallmarks
hand indented apex
see also similar thimble for **NTS**



1987
Edinburgh
Throned 1837 VR
commemorating 150 years Ascension of Victoria
vertical hallmarks



1987
Edinburgh
whisky
vertical hallmarks t
histle on apex



1987
Edinburgh
The Celtic Ram
vertical hallmarks



1987
Edinburgh
 Celtic design
 vertical hallmarks along band on verso



1980s
Edinburgh
 applied Celtic pattern



1980s
Edinburgh
 plaited-type rim



1980s
Edinburgh
 applied Celtic lion rampant



floral

Capri Jewellery Ltd (CJ)

London



1977
London
 identical design made by **HH** – with other details identical

Robert Carr (RC)

Sheffield

recreations of Victorian patterns

this maker's thimbles were for sale in David Jones Ltd in Australia



1999
Sheffield



1999
Sheffield



2000 2006
Sheffield
925



2002 2006
Sheffield
925



2006
Sheffield
925



2006
Sheffield
925

Audrey Grace Connelly (AGC)

Scotland



1985
Edinburgh
smooth sides

William Henry Creswick (WHC)

Studio Deems
Branscombe Beer Devon
Artist in gold & silver



1960
Chester
9.375 gold
dolls size - 9.00mm

Susannah Mary (Molly) Challoner (SMC)

Newcastle

Molly Challoner (1901-1990) was a Newcastle born and based jeweller and silversmith working from her family home 15 Framlington Place, Newcastle. She exhibited jewellery and silver at both the 1926 and 1928 Arts and Crafts Society Exhibitions. Her work was exhibited in 1994 at a Brighton University exhibition Women Designing: Redefining Design in Britain Between the Wars. These same pieces are in the collection of the Goldsmith Hall She registered her SMC mark at the London assay office in 1923 and appears to have stopped working at the advent of the second world war, when she became a nurse and occupational therapist. After 1945 she contributed academically to the growing profession of occupational therapy



1955
London

Chamberlain Clarke Partnership (CCP)

These thimbles were probably made by James Swann & Son (JS&S) or Swann Thimbles S(T)



1984 1991
Birmingham
applied cupids



1991
Birmingham
ornate applied band
rest smooth sides



1999
London
925

the hallmarked thimble is tiny - too small for practical use
the sterling silver Cupid holder has the 2000 hallmark symbol on the base opposite the holder figurine



Sterling (no hallmarks)
marks on leg of cupid



band of applied hearts

Elizabeth Jane Chantler (EJC JC)

Brough Cumbria

AJ Designs

she began designing and making thimbles and jewellery in 1975, with the assistance of Ailsa McKenzie

Jane uses both of her marks, irrespective of the assay date

Jane's thimbles were also available thru The Thimble Guild in Scotland 2001-2007

no thimbles were made after 2013 when she repeated her Nocturne design

where there are no hallmark dates, the thimbles are her stock items

 <p>1973 1976 2002 <u>Sheffield</u> Barcelona (1973 version has smoother finish) 10.2 grammes</p>	 <p>1980 - EJC <u>Sheffield</u> Moorish R:oxidised version 11.9 grammes</p>
 <p>1980 1982 2001 <u>Sheffield</u> Tudor Rose body is divided into eight panels rose and leaf clusters are repeated on apex 9.9-13.5 grammes</p>	
 <p>1981 2006 EJC JC <u>Sheffield</u> Teddy Bears Picnic tree on apex</p>	
 <p>1982 2001 <u>Sheffield</u> Chamomile Daisy 11 grammes available in 9ct gold</p>	 <p>1983 2002 <u>Sheffield</u> Strawberry Fields pattern repeated on apex 18 grammes also available in 9ct gold</p>



1983 2002
Sheffield
 Swallows and Clouds
 1983 limited to **100**
 also available in 9ct gold
 16 grammes



1983 2004
Sheffield
 The Silver Clover
 clover repeated on apex
 1983 limited to **200**



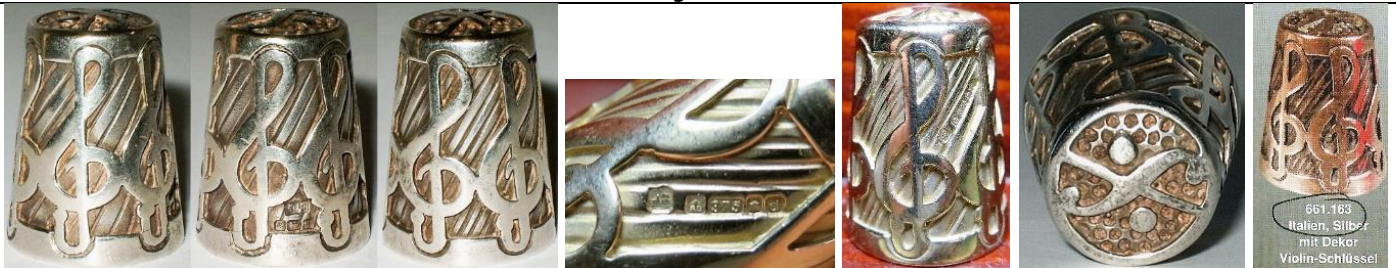
1984 2002
Sheffield
 Victorian Church Window
 13.9 grammes



1987 1988 - EJC
Sheffield
 Avalon
 one pattern repeated on apex
 16.4 grammes
 also available in 9ct gold



1989 1997 - EJC
Sheffield
 Swaledale Sheep
 11.8 grammes



1994 1995 2003
Sheffield
 Treble Clef
 13.2 grammes
 C: .375 9ct gold (2003)

R: in May 1995, this copy was offered for sale by P J Walter as Italian .800 silver, marked for Novaro and makers mark + 22



1996
Sheffield
 commemorating Queen Elizabeth's 70th Birthday
 commissioned by Thimble Society of London
 R: oxidised version
 limited **500** silver and **200** 9ct gold
 22.4 grammes



1997
Sheffield
 commemorating Queen Elizabeth's Golden Wedding
 two bells design on apex
 19.9 grammes



2000
 Millennium



2001
Sheffield
 The Apple Orchard
 showing three panels of the stages of apple trees
 apple on apex
 R: in May 1995 this copy was offered for sale by P J Walter as Italian .800 silver, marked for Novaro and makers mark + 22
 11.6 grammes



2001
Sheffield
 Shooting Star
 star on apex
 11 grammes



2000 2001 2004
Sheffield
 The Dolphin
 dolphin repeated on apex
 R: 9ct gold (2004)
 15 grammes



2002
Sheffield
 The Rabbit



2002
Sheffield
 commemorating Queen Elizabeth's Golden Jubilee
 also available in silver gilt and 9ct gold
 commissioned by Thimble Society of London
 hallmarks within the 0
 17 grammes



2002 2003 - JC
Sheffield
 Goose Fair Six Geese a-Laying



2002
Sheffield
 Fishing Fleet (in Whitby)
 seagull on apex
 also available in 9ct gold



2003 -
Sheffield
Persian Rug
also available in 9ct gold



2003 - JC
Edinburgh
Thistle - i
925
also available in 9ct gold



2003 2006 - JC
Edinburgh
Thistle - ii
four thistles all round
St Andrews Cross on apex
17.8 grammes



2003
Sheffield
The Cats
four cats with mouse on apex
also available in 9ct gold



2006
Sheffield
Three Ships Sailing
anchor on apex



2006 2013
Sheffield - Edinburgh
Nocturne
owl in moonlight
925
25 grammes



2007 - JC
Sheffield
Three March Hares
with crescent moon on apex
925
limited to **75**
14 grammes



2012 - JC
Edinburgh

commemorating Queen Elizabeths Diamond Jubilee
limited to **75** - with Edinburgh jubilee mark
16.8 grammes



Bramble
bramble repeated on apex



A child scampers over the grass, her kite bobbing above
her (promotional material)
12 grammes
made for a Thimble Club



'A Frende Loveth atte all Tymes'
A on apex
13 grammes
made for a Thimble Club



25th Wedding Anniversary
private commission



Charterhouse Mint Limited (CM)

London

set of 12 reproductions of old thimbles by this company from original museum thimbles, the set is entitled Thimbles through the Ages: a connoisseurs collection with a modern assay mark, so there can be no confusion. The original thimbles had no assay marks, so the new marks had to be incorporated in these thimbles, cast from the originals.



1986
London
14th century



1986
London
15th century
trifoliate holes in apex



1986
London
16th century
tailors



1986
London
16th century
touchstone of London



1986
London
17th century
stars



1986
London
17th century

Charles II and Katherine of Braganza's Wedding



1986
London
17th century

Feare God and honour the king



1986
London
17th century

includes makers mark of bird on pedestal



1986
London
18th century
owners mark EC



1986
London
Birth of Prince of Wales 1841



1986
London
Christening of Prince of Wales 1842



1986
London
19th century

J B Chatterley & Sons Ltd (JBC&^{SL}D)

Birmingham



1977
Birmingham
Just a Thimbleful

Lorna Christie Jewellery (LCJ)

Isle of Mull Scotland
vertical hallmarks



1989

Edinburgh

TSL in stepped cursive
commemorating AGM Sept 13th Cambridge
commissioned for Thimble Society of London



1992

Edinburgh

raised wreath of decorative leaves
hand indented apex with star-formation

Brian Clarke (BC)

The Old Schoolhouse Ballinaclesh Rathdrum Co. Wicklow Ireland

Brian Clarke is an Artist Metalsmith who has been running his own studio in Co. Wicklow, Ireland, since 1973. Having studied metal- and silversmithing techniques in Dublin, Paris and the UK, he embarked on a long career of commissions, private silversmithing work, sculptural pieces and research. His work is held in many collections, including in the National Museum of Ireland, in Dublin and the National Museum of Decorative Arts in Collins Barracks, Dublin.

www.silversmithingworkshop.com



1978

Dublin

rope-like rim and stippled surface

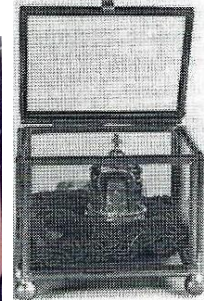


Timothy P Clayton (TPC)

London



THIS SILVER THIMBLE AND CROWN COVER IS ONE OF A PRIVATE EDITION OF ONLY 200 DESIGNED BY JENNIFER M. YOUNG TO COMMEMORATE THE SILVER JUBILEE OF HER MAJESTY QUEEN ELIZABETH II LONG MAY SHE REIGN



1977

commemorating Queen Elizabeth's Silver Jubilee

1952 E¹R 1977

with silver gilt and four garnets crown which fits over thimble

lower L: gilt has largely worn off

limited to **200**

thimble designer is Jennifer M Young

thimble in glass and gilt presentation case with red velvet cushion

R: b&w photo

CME Jewellery (CME)

Leicester



1990s

Birmingham

925

seated Fairy atop



Birmingham

925

Stork with Baby atop



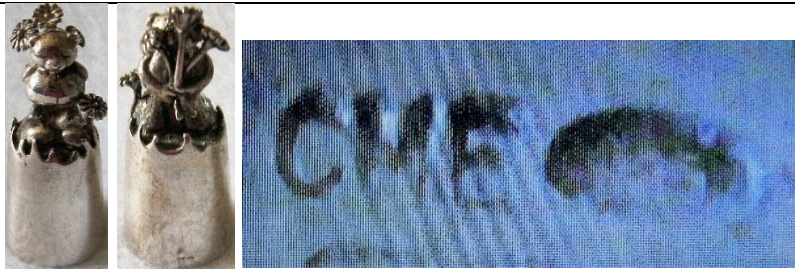
Birmingham

925

ballerina atop

import mark





925

Teddy Bear atop holding flowers behind his back



Birmingham
925
hedgehog



Birmingham
925
snail



with blue stones
Birmingham import mark

Albert Cohen & Charles Solomon (C&C)

Holborn Circus London
trading as Cohen & Charles



1964 1966 1969
Birmingham
red stone apex
size 7 9 5 6



1965 1966
Birmingham
size 4



1967
Birmingham
marks upside down
similar design to **SJR**



1967
Birmingham
size 6



1973
Birmingham
black stone apex
size 6



1974
Birmingham
agate set flat onto apex
size 5



Birmingham
stone set flat onto apex
size 5

Clive & Clarissa Cooke (C&CC)

Wood Yard Gallery Ludlow

they use the lost cast waxing or spinning by lathe – motifs soldered on
in 2002 these thimbles retailed at between £52-65

where there are no hallmark dates, the thimbles are stock items – if yours has a hallmark date, please share. some of these thimbles were sold in Australia in 1988 by Jihl Berry of *Thimble Collections*, and Barbara Kelly of *The Thimble Collector*.



1980s (tho 1987 date also seen)
applied RSN for Royal School of Needlework and thread needle
(seen incorrectly advertised as Royal School of Nursing)
this commission is where C&CCs thimble journey began
rope-like rim



1984 1986 1987

London

9ct gold Bees applied on beehive

R: some sold in Indian rosewood beehive container and an applied silver bee



1987

London

includes a sterling silver Beehive thimble holder with 9ct gold Bees
+ VI import mark into The Netherlands + *De Vingerhoed* KS mark



1984
London
beehive shape



1984 1988
London
applied 9ct gold Butterfly on apex



1984
London
applied 9ct gold bee on apex and flowers



1984 1988
London
Cat shape



1984 1986
King (chess piece)

also sold in an Indian rosewood container and silver portcullis

C: in May 1995 this copy was offered for sale by P J Walter as Italian .800 silver, marked for Novaro and makers mark + 22

I don't have any further details on the gold thimble (R)



1984 1987
Owl shape with dropped rim



1985
Penguin shape



1985
applied mouse in 9ct gold on apex



1986 1988

Queen (chess piece)

R: in May 1995 this copy was offered for sale by P J Walter (German mail order) as Italian .800 silver marked for Novaro and makers mark + 22 thimble box in shape of chess piece



1986
London
Fox
head shape



1986 1988
London
Dog
head shape



1988

1990
London
applied Ducks over vertical stippling
12 grammes



1988

London

large bee applied on beehive shape

Indian rosewood beehive container and a silver bee applied



1988 1989

London

Celtic Ribbon



1989

London

Celtic



1989

London

applied 9ct gold Butterflies and flowers



1990

London

applied Hedgehog atop



1991

London

strawberries
strawberry repeated on apex



1993 or 1996
applied mouse and 9ct gold cheese



2000
London
applied butterfly atop



applied 9ct gold Bee and flowers



bee and honeycomb



bear shape



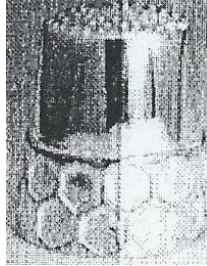
applied Bow in 9ct gold



applied frog in 9ct gold atop apex



hedgehog shape



honeycomb band



wall and gate



wildflowers

Ronald Cordon (RC)



1981
London
hand-indentations

Tim (Frogman) Cotterill

Cotterill grew up in the United Kingdom and has a passion for frogs. He moved to California.



c.1990
no hallmarks Sterling © Frogman



Crescent Silver (CS)



2012
Birmingham
applied Princes of Wales feathers Ich Dien
Highgrove
smooth surface

Anthony Stephen Darwent (ASD)

Castleton Derbyshire

Blue John Jewellery



1986
Sheffield



Deakin & Francis (D&F)

Birmingham

these thimbles were made by **JS&S** with D&F makers mark – others have the **JS&S** makers mark – made for Thimble Society of London



1982
Birmingham
commemorating the Birth of Prince William
+ 9ct gold
commissioned by Thimble Society of London
also made by **JS&S**



1984 (K)
Birmingham
commemorate the birth of Prince Henry
15 September 1984
gilded crown in 18ct gold including Thimble Society of
London on apex
also available in sterling silver
commissioned by Thimble Society of London



1985 (L)
Birmingham
commemorating Queen Elizabeth the Queen Mother 85th
birthday 4 August 1985
with red white and blue enamelling
commissioned by Thimble Society of London
limited to **60**



Christmas 1992 (S)
Birmingham



Deakin & Francis Birmingham

Gregory John Dennis (GJD)

boxed set of 12 designed by Austrian artist Ludwig Redl. Redl's name appears below the number of each bas relief design. Limited to **1000** sets (tho according to Jean Shoup in 1988, only **100** sets were ever made), commemorating American Revolution and War of Independence, in Britannia silver (958 1000)

See also **LR**



1984

London

no. 1: The Boston Tea Party



1984

London

no. 2: Paul Reverses Midnight Ride



1984

London

no. 3: Fight on Concord Bridge



1984

London

no. 4: Battle of Lexington



1984

London

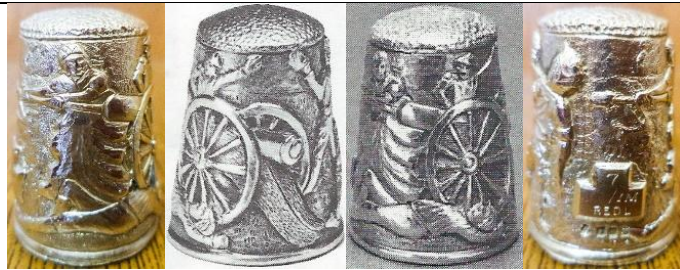
no. 5: Battle of Bunker Hill



1984

London

no. 6: Declaration of Independence



1984
London
 no. 7: Molly Pitcher-Battle of Monmouth



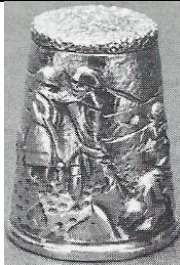
1984 1992
London
 no. 8: Washington Crossing the Delaware



1984
London
 no. 9: Battle of Trenton



1984
London
 no. 10: Battle of Germantown



1984
London
 no. 11: Winter at Valley Forge



1984
London
 no. 12: Surrender at Yorktown



boxed 12 of 1984 American Revolution set



1984 1992

London

The Spirit of 76

intended as a promotional thimble for the set



1992

London

showing #6 & 7
the set was re-issued?



1998

London

war scene

Stuart Devlin (SD)

London



1980

London

silver-gilt, enamelled floral band

Dix Jewellery (DJ)

trading as Harrison Brothers & Howson Ltd – see also **HBH**

made in Pforzheim Germany by Julius Wengert

Wengert marks his thimbles in the apex with sizes S M or L

some have typical eight-point flower mark of modern German thimble makers



1990
London
925

London import mark
eight-point mark on apex



2000 (millennium mark)
London
925

eight-point mark on apex



London
925

London import mark
bunnies in relief all round



London
925

London import mark
foxes in relief all round

Peter John Doherty (PJD)

Birmingham – the Worcestershire



1986

Birmingham

hallmarks are upside down

K L Downes (KLD)

Birmingham



1981

Birmingham

advertising Carlsberg

F Drury (Silversmiths) Ltd (FD)

Dore Sheffield



1982
Sheffield

Thomas Kerr Ebbutt (TE)

Edinburgh

Ebbutt started work in 1896 and died in 1921. His company continued in business until 1977 when it was bought by Hamilton & Inches. H&I continued to use the TE mark until c2000



1986

Edinburgh

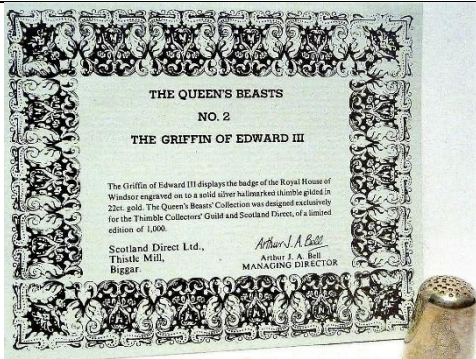
commemorating Commonwealth Games Edinburgh
R: gilded sterling silver
vertical hallmarks



1986 1988

Edinburgh

the Queens Beasts – White Lion of Mortimer
(no 5 from set of 10)
issued by Scotland Direct The Thimble Collectors Guild
limited to **1000**



1986

Edinburgh

the Queens Beasts – The Griffin of Edward III
(no 2 from set of 10)
issued by Scotland Direct The Thimble Collectors Guild
limited to **1000**



1989

Edinburgh

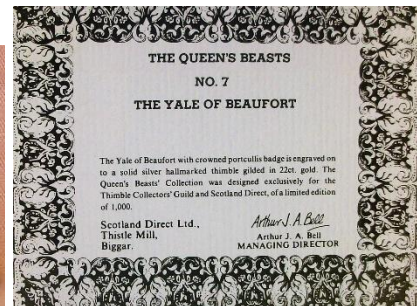
the Queens Beasts – The Lion of England
(from set of 10)



1986
Edinburgh
 The Queens Beasts - set of 10
 vertical hallmarkst



1986
 the Queens Beasts set of 10
 vertical hallmarks
 silver gilt



1986
Edinburgh
 two of the Queens Beasts
 silver gilt

according to the accompanying certificate the set was made exclusively for Scotland Direct and limited to **1000** sets

full set: The White Greyhound of Richmond – The Griffin of Edward III – The Falcon of the Plantagenets – The Black Bull of Clarence – White Lion of Mortimer – The Unicorn of Scotland
 The Yale of Beaufort – The Red Dragon of Wales – The White Horse of Hanover – The Lion of England



1990

Edinburgh

commemorating 90th Birthday of HM the Queen Mother

with official approval for the design and use of the Coat of Arms being sought from the Lord Lyon, King of Arms and Clarence House. The reverse bears a commemorative engraving; the sides are decorated with the Queen Mothers favourite flowers and roses.

the thimble is very large – almost twice the height of a normal thimble @ 1½ ins or 32mm; diameter 25mm weight 44.4 grammes (1.57ozs)

limited to **475** thimbles

Elkington & Co (E&Co)

Birmingham

probably made by **JS&S**



1961

Birmingham

similar design to **B&Co – nt – MK – DP**

Exchange Findings Ltd (EFL^{TD})



1992

Sheffield

inscribed *Madeleine*

made in Germany – 8-petal flower mark on apex

Roy Fairweather (RF)

Ashbourne, Derbyshire

Ron Fairweather is currently head designer and chief gold and silversmith for Avanti Jewellers. He served his apprenticeship at a London-based company, producing items for the high end retailers around Bond Street. He was based in Wirksworth Derbyshire when his 1980s sterling thimbles were created.



1986
Sheffield



F J Flavell Ltd (FGF)

Stourbridge



1984
Birmingham
Joy



2002
Birmingham

Shirley Frost (SF)

handcast



Gentle face



Cherub



Head



Child



Chariot

these designs were identified by these line drawings by Thimble Society of London in winter 1981. These may have that hallmark date? Some of these were also available in brass



1977

Birmingham

commemorating Queen Elizabeths Silver Jubilee



1978

Birmingham

face eyes closed



1979

Birmingham

face

many copies fakes were made of this design
finger-shaped



1979

Birmingham

face within swirls



1981

Birmingham

commemorating the Marriage of Prince Charles
art nouveau swirls on verso
with Welsh Dragon
finger-shaped



1981
Birmingham
 commemorating the Royal Wedding of Prince Charles
 with Prince of Wales feathers
 art nouveau swirls on verso
 finger-shaped

Brian Leslie Fuller (BLF)

Clerkenwell London



1974
London
 finely stippled sides



1977
London
 stippled sides



1979
London



1984
London
 dormouse

Garrard & Co (G&C^o L^d)

London

The House of Garrard

Regent Street *and* Albemarle Street London

These jewellers would have commissioned thimbles from various silversmiths



1983

London

enamelled leaves band with butterfly on apex
probably made by Paul Morley



1989

Birmingham

Royal Opera House
with Royal coat-of-arms of the United Kingdom
engraved on apex



1998

Sheffield

925

import mark

Hickory Dickory dock The mouse ran up the clock



Charles Owen George (COG)



1982
Birmingham
Christmas 1982 with reindeer



1982
Birmingham
Easter 1982 with daffodils



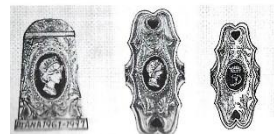
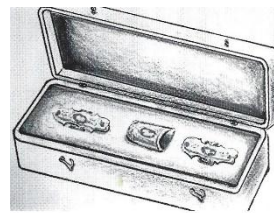
1984
Birmingham
Christmas 1983 with stylised tree

Peter Gillmore (PG L^D)



1977
London + London import mark + Jubilee mark
925
commemorating Silver Jubilee of QEII
identical design to the more well-known design by JS&S
(marks cleanly struck so not a reproduction)

Alicia Gordon (AG)



1998
Sheffield
commemorating the death of Princess Diana - Diana 1961-1997
sterling silver and enamelling (850 copies) – 9ct gold – 18ct gold and enamelling (450 copies)
commissioned by Thimble Society of London – with sketch of set with two fingerguards
designer: Kuo-chi Lin
small dainty thimble

Ola M Gorie (OMG)

Orkney Scotland

she founded her jewellery company in 1960



1981

Edinburgh

applied thistle with Celtic symbols, including St Columba Cross, a Saltire and a unicorn
on finely stippled or frosted sides
flat apex



1981

Edinburgh

applied different Tudor Rose
on finely stippled or frosted sides
flat apex



1988 1989

Edinburgh

applied Tudor Rose
domed apex



1989

Edinburgh

applied thistles
domed apex



Norman Grant (NG)

Lundin Links Fife Scotland

(1943-2017)

his company was known as Dust Jewellery



1976 1980 1981

Edinburgh
squirrels

hand-indented apex

lower: this example was acquired in 1976 from the Design Centre, Haymarket in London



1978 1979
Edinburgh

bees amongst flowers with large honeycomb



1979
Edinburgh
large bee



1981 1982
Edinburgh
butterflies

1981 hallmarks are lettered across middle of thimble – 1982 they are on rim



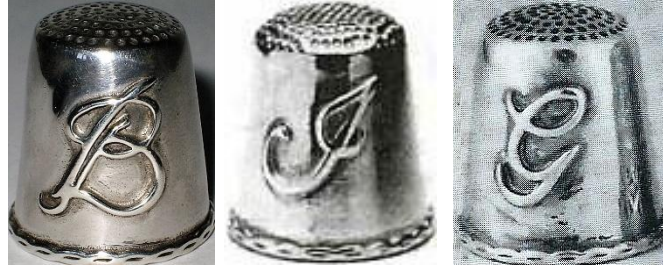
1981 1982 1983
Edinburgh
dragonflies



1982
Edinburgh
farm



1982
Edinburgh
bees in flowers with small honeycomb
patterned rim



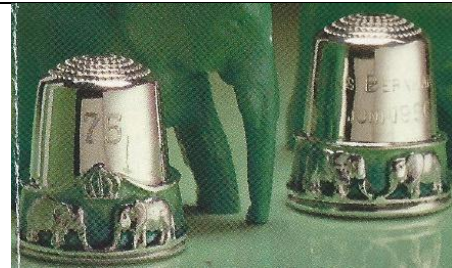
1982 1983 1986
Edinburgh
applied initial B (1982) I (1983) and G (1986)



1984
Edinburgh
commemorating 75th Birthday
30 April 1984 Prinses Juliana
blue enamelling – beaded rim signifies pearls she always wore and there are 75
crown over blue enamelling on apex
commissioned by Kay Sullivan - includes mark KS for her Dutch De Vingerhoed and the import mark of ZI into the
Netherlands
limited to **250**



1985
Edinburgh
commemorating 18th Birthday
Prins Willem Alexander 27 April 1985
gold-plated silver blue enamelling
commissioned by Kay Sullivan - includes mark KS for
her Dutch De Vingerhoed and the import mark of ZI into
the Netherlands



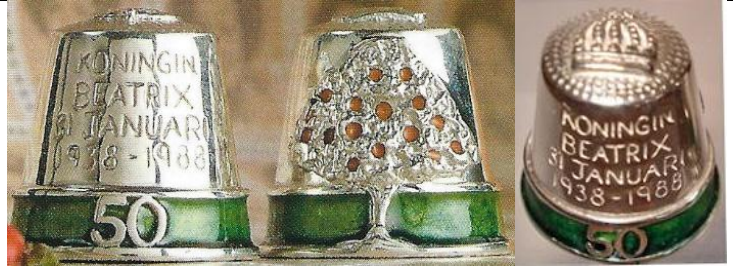
1986
Edinburgh
commemorating 75th Birthday
Prins Bernhard 29 Juni 1986
green enamelled band of four elephants and crown
commissioned by Kay Sullivan - includes mark KS for
her Dutch De Vingerhoed and the import mark of ZI into
the Netherlands
limited to **250**



1987

Edinburgh

commemorating 50th Wedding Anniversary of Princess Juliana and Prince Bernhard
wide blue enamelling and gilding - ruby sapphire and zircon below crown
commissioned by Kay Sullivan - includes KS mark for her Dutch De Vingerhoed and the import mark of ZI into the Netherlands
limited to **300**



1988

Edinburgh

commemorating 50th Birthday of Queen Beatrix
applied orange tree, orange enamelled oranges and green enamelled band
applied crown on apex
Koningin Beatrix 1938-1988
commissioned by Kay Sullivan - includes KS mark for her Dutch De Vingerhoed and the import mark of ZI into the Netherlands
limited to **250**



Martyn Guille (MG)



1999

London

Guernsey coat-of-arms
similar design to **WHM**



2000

London

925
slightly flared



Keith Hamilton-Gabb (KHG)

Sutton Coalfield, West Midland



1990
Birmingham

Harrison Brothers & Howson (HBH HB^S&H HB&H)

The Chase London SW4

made in Pforzheim Germany by Julius Wengert

Wengert's thimbles are uniquely marked with size in apex: S M L



apex has typical eight-point mark in shape of a flower of German thimble makers



see also **DJ**



2002
Sheffield (HBH)
925

commemorating Queen Elizabeths Golden Jubilee
2002 Jubilee hallmark is part of design
eight-point mark on apex



2003
Sheffield (HBH)
925

eight-point mark on apex



2012
London (HB^S&H)
925

commemorating Queen Elizabeths Diamond Jubilee
2012 Jubilee hallmark is part of design
eight-point mark on apex



2022 (Jubilee mark)
London (HB&H)
925

commemorating Queen Elizabeths Platinum Jubilee
2022 Jubilee hallmark is part of design
eight-point mark on apex



925 with M in apex which is a unique size marking of Wengert
eight-point mark on apex

Joseph Hayward & Son (JH&S)

Frederick Street Birmingham



1962
Birmingham
size 7



1963
Birmingham
size 3



1963
Birmingham
size 7



1978
Birmingham
size 3



1978
Sheffield
size 7

R L Heaton (RLH)

Buxton



1981
Sheffield



head-shape

Henley Associated Jewellers (HAJ)



1997

Birmingham

commemorating Great Britain Seccession of Hong Kong to China
 commissioned by Thimble Society of London - with sketch

limited to **500**

designer: Kuo-chi Lin



2000

Birmingham

925

commemorating the Millennium

also available in 9ct gold

commissioned by Thimble Society of London

R: sapphire-coloured stones in centre of the zeros

John Herbertson (JNH)

Christchurch Dorset
 handmade from 1970s



1977
London
 castle



1978
London
 applied M
 smooth sides



1979
London
 applied seabird
 smooth sides



1979
London
 applied hedgehog
 smooth sides



1993
London
stippled surface



1995
London
commemorating Dorset Thimble Society 10th Anniversary 1985-1995
stippled surface
limited to **14**



applied daisies



Hans Herman (HH)



1977
London
cast

identical design made by **CJ** - with other details identical

Highland Line (HL)

Achnasheen Scotland
Tony Michael Holland



1985
Edinburgh
smooth sides

Michael D Hillier (MDH)

Dublin



1974
Dublin
stippled surface creating vertical panels



1983
Dublin
shamrocks
vertical hallmarks

no photo

1988
Dublin
Millennium of Dublin



1988
Dublin
wide smooth band with symbols: question mark, a figure with crook and a lighthouse ...



1991
Dublin
handcrafted
commemorating Dublin as City of Culture in Europe
Happy and Sad masks representing theatre – an open book for Book of Kells and symbolising learning – an artists palette – a musical instrument – a Dublin door and a Celtic brooch

Historic Royal Palaces (HRP)



2002
London
925
applied thistle with purple stone, crown, Irish harp. fleur de lis with Tudor rose on apex

David Hollander & Sons Ltd (DH&S)

Birmingham

based on Victorian thimble patterns
made by **JS&S**



1978 1981
Sheffield
size S L



1978
Sheffield
size S



1978
Sheffield
size 5

George Holmes (GH)

Birmingham



1991

Birmingham

The Thimble Guild (Nov 1991) attributes this thimble to David Parker – may only be the designer?

Sheila Holness (SJH)

Brent Knoll Somerset

member of Somerset Guild of Craftsmen



1990

London

applied Flowers and Butterflies
10.8 grammes



2011

London

applied Sprig of flowers and
leaves
includes Diamond Jubilee mark
12.4 grammes



2011

London

applied flower with band of leaves
includes Diamond Jubilee mark
12.2 grammes

Vera Mary Honeker (VMH)

Esher Surrey



1983

London

applied flower

Charles Henry Hooper & Sybil Elsie Hooper (CHH)

Birmingham

trading as Hooper Jewellery



1985 1987 1990
Birmingham

using five of Birmingham Anchor
assay mark around band



1985 1987 1990
Sheffield

using five of Sheffield Rose assay
mark around band



1985 1987 1990
London

using five of London Leopard assay
mark around band



1985 1987 1990
Edinburgh

using five of Edinburgh Castle assay
mark around band



1986 1987
Sheffield
pierced band



1987 1990

British Hallmarks set
each hallmarked with the corresponding Assay Office

Mark Houghton Ld (MH MHLd)

Hatton Gardens London



1993
Sheffield

Dragonfly on stippled ground
daisies pattern on apex
made by **JS&S**



1998

London
applied Grapes
London import mark



1999
Sheffield
925

applied Swans on smooth sides
see identical design made by **AN**



1999
Sheffield
925

family scene all round after painting by Jan Steen



2002
Sheffield
925

applied Flower on smooth sides



Sheffield
925

scene all round
size 9

House of Lawrian (HOL)

Leigh-on-Sea Essex

Christopher Lawrence is a member of the Institute of Professional Goldsmiths



1977
London

commemorating Queen Elizabeths Silver Jubilee
applied gilt flowers and leaves on stippled ground
R: numbered in apex – No 68
similar design to **MN&WB - TT**



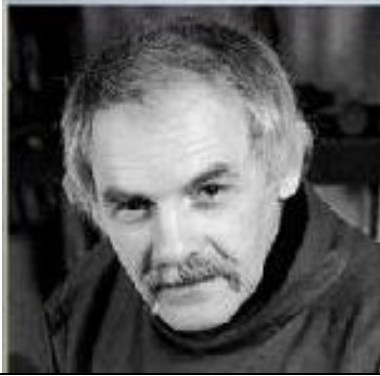
1978
London



1978
London



1979
London
gilt flames



John Huddleston (JH)

Radley Oxfordshire

www.jhsilver.co.uk

silversmith and jeweller – he accepts commissions



2016
London

special commission – initial applied F and leaves
hand indentations



2017
London

hand indentations on apex



London

applied flower on smooth sides
unusually shaped indentations



Charles Iles & Gomms (CI&G)

Birmingham

the Company closed in 1990 – they were sold to Thomas Johnson
neither Charles Iles nor Iles & Gomms made sterling silver thimbles 1850-1990



1995
Birmingham
made by: **JS&S**



1995
Birmingham
two maker's marks
MADE IN ENGLAND
made by: **JS&S**

Kenneth James Jack (KJJ)

Birmingham



2000
Birmingham
millennial mark on apex



2006
Birmingham
rope-like rim

K M Silver (KMS)

Birmingham

silverware manufacturing company based in the Midlands, which was founded in 1977



1984
Birmingham



1997
Birmingham
'JUST A THIMBLEFUL'

M Kamin (MK)

Birmingham



1982 1983 1984

Birmingham

similar design to **B&Co - nt - DP - E&Co**



1982 1984 1985 1986 1987 1988 1993

Birmingham

three bands of graduating rings



1984 1985 1986

Birmingham



1987

Birmingham



1992

Birmingham

maker's marks forms part of design
925 & import mark



1995

Birmingham

925 and import mark



1996

Birmingham



2000

Birmingham

925



2000

Birmingham

925



Birmingham

925 + import mark

hallmarks are part of the design



Birmingham
925 + import mark
 hallmarks are part of the design
 faceted rim

Malcolm Knight (MK)

Birmingham



1982
 Birmingham
 floral sprig



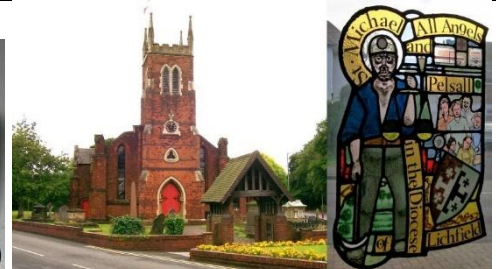
1984
 Birmingham
 GOOD LUCK



1990
 Birmingham
925 and import mark



1993
 Birmingham
925
 Pelsall Millennium Tapestry 1994



St Michael and All Angels Church, Pelsall & The Pelsall Millennium Tapestry, 1994

Peter Ladell (PL)

Luton

Ladlaw Crafts

Peter took commissions in both silver and gold



2000

Sheffield

925

commemorating Her Majesty Queen Elizabeth the Queen Mother 100 years 1900-2000
commissioned by Thimble Society of London

Peter Robert Larratt (PRL)



1979

London

Robert Legg (RL)

Legg is the engraver of these thimbles – see also **CB** and **M^N&W^B**
Later known as Robert Campbell Legg



1981

London

CD Royal Wedding St Paul's 1981

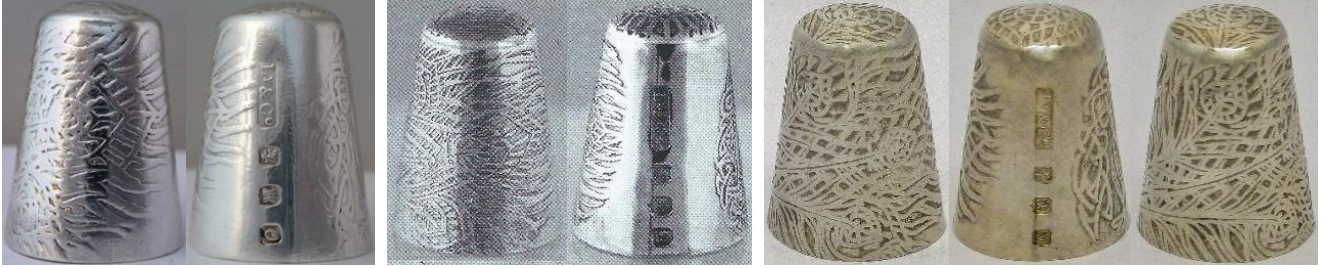
E Leonard Brothers (ELB)



1983

London

Liberty & Co (Ly&Co)



1987 1988 1989

Edinburgh

Hera feathery design created by Arthur Silver
vertical hallmarks

Links of London (LL)



2016

London
sewing kit



charm

J.N. Lowe (Sheffield) Limited (JNL)



1978
Sheffield



1978
Sheffield

Montagu Malleon (MM)

West Finchley London



1980

London

raised gold lettering (which is not Arabic)

Geoff Mansell (GFM)

Geoff Mansell is the husband of one of the Thimble Society of London (Midland Group) members. He took up silversmithing in his 70s. The group was started by Norma Spicer for the TSL local members



1992

Birmingham

If you look closely at the shield, you will see a large letter 'T' across the top and between the other letters for TSLMG for Thimble Society of London Midland Group

large assay marks

R: membership pin

William H Manton (WM)

Pittsford Street Birmingham

trading as Birmingham Gold & Silversmiths Ltd

probably made by **JS&S**

where there are no hallmark dates, the thimbles are 2002 stock items



1980s

Birmingham



1982

Birmingham



1982

Birmingham



1983

Birmingham



1983 1984

Birmingham



1983 1988 1995 1996

Birmingham

similar design to **JHB - WHM**



1984 1985

Birmingham

stylised leaves

similar design to **WHM**



1987

Birmingham

similar design to **WHM**



1989

Birmingham



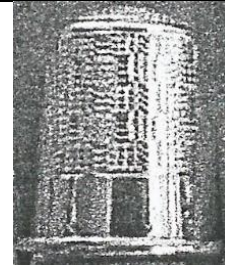
1993

Birmingham

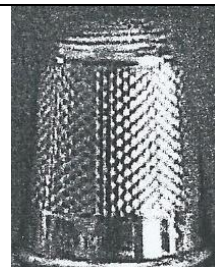
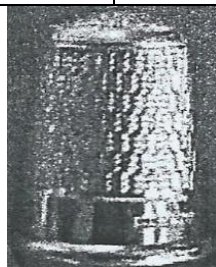
heavy, patterned rim



similar design to **WHM**
probably made by **JS&S**



basketweave pattern



Mappin & Webb Ltd (M^N&W^B)

Mappin & Webb are retail jewellers, so the thimbles featured were made by British thimble makers, with the M^N&W^B marks.



1977 1978

London

applied gilt flowers and leaves on stippled ground
similar design to **HOL - TT**



1981

London

commemorating the Marriage of Prince Charles
made by **Gerald Benney** for Mappin & Webb
Spencer Family crest



1981

London

commemorating the Marriage of Prince Charles
made by **Robert Legg** for Mappin & Webb

Henry Booth Marland (HBM)



1987 1988 1991

London Edinburgh

set with three garnets – ropelike rim
design in art nouveau tradition of Charles Rennie Macintosh
handmade – heavy
limited to **250**



1988

London

applied dragon
handpunched apex

A Marston & Company (A(M)&Co)

Birmingham

probably made by **JS&S**



1981

Birmingham

brushed rim and apex
similar design to **SMCo - REP**



1981 Birmingham

Peter Charles Maxwell-Aylwin (PCMA)

Camberley Surrey



1980
London
faceted rim and hand indented apex



1980
London
faceted rim



Camberley store now closed

Eleanor B McDougall (EBM)

Isle of Mull Scotland



1988
Edinburgh
applied Viking ship

W H Miller (WHM)

Birmingham

trading as Miller Jewellers Ltd
distinctive squat shape
probably made by **JS&S**



1983 1985 1989
Birmingham
Brightcut
L: unindented apex
similar design to **JHB - WM**



1983
Birmingham
Brightcut diagonally



1984 1985 1989
Birmingham
Floral
textured apex



1984
Birmingham
stylised leaves
similar design to **WM**



1984
Birmingham



1984
Birmingham
stylised leaves all over pattern
textured apex



1985
Birmingham
stylised Roses pattern
R: wider indentations on apex - L: more domed





1986 1989

Birmingham

stylised Acanthus designs over striations
some with more textured apex
similar design to **WM**



1986
Birmingham
Acanthus
textured apex



1986
Birmingham
stylised leaves in vertical rows
textured apex



1986
Birmingham
Flowers over striations
Textured apex



1989
Birmingham
Guernsey coat-of-arms
similar design to **MG**



1989
Birmingham
flowers



Birmingham
similar design to **WM**

Monica Gems Ltd (MGLd)

Norfolk

Monica Vinader concentrates now on jewellery with gems. She has a jewellery store in London (2018)



1999
London
925
kittens



2000
London
applied scissors



Moody & Archer (M&A)

Birmingham



1978
Birmingham
stippled surface
similar design to P&S



Birmingham
delightful blue enamelled band
with strongly petalled flowers



stippled surface



1985
Birmingham
handpainted enamelling by Jo Withers Madeley Telford Shropshire

Robert Walter Moody (RWM)

Dalry Ayrshire Scotland



1983
Edinburgh
applied cat with mouse

Paul V Morley (PVM)



1983
London
gilt sterling silver
commemorating 1983 Anniversary of Queen Elizabeth
II's Coronation
with jewelled thistles, rose and shamrock on stippled
surface



1987
London
18ct gold with applied Daffodils and emeralds on two
raised bands using two colours of gold
limited to **50**
commissioned by Thimble Society of London, Autumn
1987



London
stippled surface with gilt Bee at apex
enamelled leaves on rim

National Trust of Scotland (NTS)

Edinburgh

I wonder which Scottish silversmith produced these for the NTS?



1986
Edinburgh
Celtic design



1986
Edinburgh
commemorating the Marriage of Prince Andrew to Sarah
Ferguson
this was probably made by **PDAC**

Next PLC (nt)

probably made by **JS&S**



1989
Birmingham



1989
Birmingham

Tho these thimble appear to be identical, the maker's marks are different. See topic on Marks on British silver thimbles
similar design to **B&Co - nt - E&Co - MK**

Peter Nicholas (PN)

Peter Nicholas was a company set up by Peter Lunn and Nicholas Plummer. Peter Lunn is a craftsman specialising in spinning, carving and 3 D design. He worked for Stuart Devlin from 1973 to 1983 before setting up Peter Nicholas and Co Ltd which continued until 1991. He now works for himself, mainly to commission and has been involved in education



1990
London

commemorating the 90th (1900-1990) birthday of Queen Elizabeth the Queen Mother
Tudor Rose pattern on apex

Ray Nimmo (RN)

Handmade. Pre-2013 es's thimbles are not assayed. Those thimbles were marked Sterling + his maker's mark. Some of these thimbles are one-offs - most of the attributed names or descriptions are by RN. Note the many different thimble shapes used and the many types of rims

Other examples: Placename thimbles from around the world - Thimbles with slogans



(2006)



(2006)



(2007)



(2008) (2009) (2011) 2014 2020
Birmingham
925
DORA



(2008) (2011) 2013
Birmingham
925
NOBODY'S PERFECT



2009
FROGET-ME-NOT



(2011)
'2012'



(2011)
anchor



(2011) 2016 2020
Birmingham
925
Art Nouveau flower pattern



(2011)
BOOTS CHEMIST



(2011)
BUGGER BOGNOR



(2011) 2014 2015 2016
Birmingham
925
butterfly



(2011)
Celtic knot



(2011)
CHARLES LOVES
DIANA



(2011) 2015 2016 2020
Birmingham
925
catch of the day



(2011)
cherub



(2011)
cross



(2011)
cross



(2011)
cupid



(2011)
deer



(2011)
dolphin



(2011)
Durer's praying hands



(2011)
eagle



(2011)
elephant



(2011) 2015 2020
Birmingham
925
geometric cubism



(2011)
fingerguard



(2011) 2013
Birmingham
925
GOOD LUCK



(2011)
flowers and leaves



(2011) 2015
Birmingham
hearts



(2011)
ICH DIEN
Prince of Wales feathers



(2011) 2015
Birmingham
large flower
R: beaded rim



(2011)
Jacobean style



(2011)
leaves



(2011) 2015
Birmingham
925
Lincoln Imp



(2011)
LONDON 1960



(2011 x5) 2015
LOVE



(2011) 2013
Birmingham
925
Madonna
L: Jacobean style



(2011)
MERDE



(2011)
MINE



(2011) 2013
Birmingham
925
mushroom-shaped



(2011) 2013
Birmingham
925
MYRA



(2011)
phoenix



(2011)
PRINZ-OBERON
(ferry)



(2011 x2) 2013
Birmingham
925
Raphael's angel



(2011)2015
Birmingham
925
small flowers



(2011)
snowflake



(2011)
St Christopher



(2011)
sun



(2011)
swastika



(2011)
Thai



(2011)
Thai



(2011) 2013 2015
thistle



(2011) (2012) 2013
Birmingham
925
TITANIC



(2011)
thread winder



(2011)
VICTORY



(2011)
yacht



(2011 x2) 2015
Birmingham
925
Yorkshire rose
L: textured



(2011)
ZG HOLLAND
(beer)





2011

abstract, stylised or geometric designs



2012
DORKUS



2012
GRIPPA



2012
NIPPA



2013
Birmingham
925
atomic pattern



2013
Birmingham
925
daffodils with bee on apex



2013
Birmingham
925
bullseyes



2013
Birmingham
925
diamonds



2013
Birmingham
925
flowers



2013
Birmingham
925
Hermes



2013
Birmingham
925
leaves



2013 2014
Birmingham
925
Victorian design

 <p>2013 2020 <u>Birmingham</u> 925 'Alien Road Map'</p>	 <p>2013 2020 <u>Birmingham</u> 925 shell design</p>	 <p>2013 <u>Birmingham</u> 925 fleur de lis</p>	 <p>2013 <u>Birmingham</u> 925 Lincoln Imp</p>
 <p>2013 <u>Birmingham</u> 925 medieval ring shape</p>	 <p>2013 <u>Birmingham</u> 925 medieval</p>	 <p>2014 2015 2016 <u>Birmingham</u> 925 flowers</p>	 <p>2014 2020 <u>Birmingham</u> 925 HOME SWEET HOME</p>
 <p>2014 <u>Birmingham</u> 925 leaves and berries</p>	 <p>2015 <u>Birmingham</u> 925 Art nouveau girl</p>	 <p>2015 <u>Birmingham</u> 925 claddagh ring</p>	 <p>2015 <u>Birmingham</u> 925 dragonfly</p>
 <p>2015 2020 <u>Birmingham</u> 925 elephants</p>	 <p>2015 <u>Birmingham</u> 925 forget-me-nots</p>	 <p>2015 <u>Birmingham</u> 925 four leaf clover</p>	 <p>2015 <u>Birmingham</u> 925 frog</p>
 <p>2015 2016 <u>Birmingham</u> 925 galleried band</p>	 <p>2015 <u>Birmingham</u> 925 holly</p>	 <p>2015 <u>Birmingham</u> 925 Ichtys symbol</p>	 <p>2015 <u>Birmingham</u> 925 leaves</p>



2015
Birmingham
925
Madonna and child



2015
Birmingham
925
mouse



2015
Birmingham
925
owl with moon
owl pattering all round



2015
Birmingham
925
rose



2015
Birmingham
925
spread eagle



2015
Birmingham
925
tailor's



2015
Birmingham
925
tailor's



2015
Birmingham
925
Trinity Celtic knot



2015
Birmingham
925
turtle



2015
Birmingham
925
turtles



2015
Birmingham
925
WISH
rebus: wish upon a star



2016
Birmingham
925
AMORA



2016
Birmingham
925
dove



2016
Birmingham
925
cats



2016 2020
Birmingham
925
donkey with saddle



2016
Birmingham
925
dormouse



2016
Birmingham
925
frogs



2016
Birmingham
925
elephant



2016 (2) 2020
Birmingham
925
flowers and leaves



2016
Birmingham
925
large leaves and flowers



2016
Birmingham
925
hedgehog



2016
Birmingham
925
hedgehog atop



2016
Birmingham
925
leaves



2016
Birmingham
925
mice



2016
Birmingham
925
morning glory



2016
Birmingham
925
pigs might fly



2016 2020
Birmingham
925
'Safari' with zebras and giraffe
R: matching thimble holder



2016
Birmingham
925
rose



2016
Birmingham
925
Scottie dog



2016
Birmingham
925
sheep



2016
Birmingham
925
SILVA



2016
Birmingham
925
snake



2016
Birmingham
925
turtle



2016 2020
Birmingham
925
Victorian pattering
JOY



2016
Birmingham
925
Westminister Abbey



2020
Birmingham
925
MMXX



2020
Birmingham
925
'Swan Lake'

with articulated swan opening to reveal ballerina



2020
Birmingham
925

commissioned engraving all round - Master Engraver
Keith A Raes (KAR)
'Hey Diddle Diddle'



2020
Birmingham
925

commissioned engraving all round Master Engraver
Keith A Raes (KAR)
'Humpty Dumpty sat on a Wall'



2020
Birmingham
925

commissioned engraving all round - Master Engraver
Keith A Raes (KAR)
'Little Miss Muffet'



2020
Birmingham
925

commissioned engraving all round - Master Engraver
Keith A Raes (KAR)
'Simple Simon met a pieman'



2020
Birmingham
925

commissioned engraving all round Master Engraver
Keith A Raes (KAR)
'The Royal Coat of Arms' 'Dieu et Mondroit'



2020
Birmingham
925

commissioned engraving all round Master Engraver
Keith A Raes (KAR)
'Three Blind Mice'



2020
Birmingham
Symphon



2020
African animals



'COATS SHEEN Fast colors'



DREENA 9



DUROID



flowers



FU EU



HIC
drunks



KURIT



SILVA



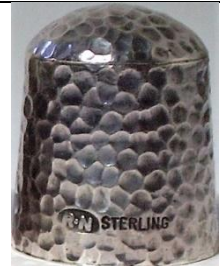
stars



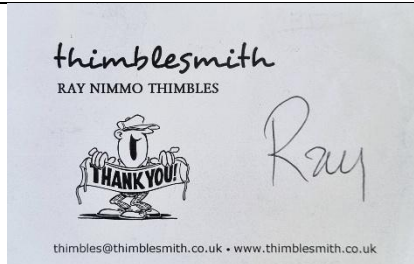
FOREVER



tortoises with other animals



beaten surface



2007

Ari Daniel Norman (AN)

London

Ari Norman was the first and only silversmith to win the Queen's Award for Export Excellence in 1989 and was awarded Freedom of the City of London in 1992 for services rendered to the British silver industry where there are no hallmark dates, the thimbles are stock items – if yours has a hallmark date, please share. From revisiting his range, it seems that Norman imports thimbles and places his maker's mark on them.

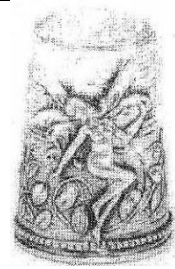
www.aridnorman.com



1982 1987 1989 1991 1992 2000
2008 2017
London
galleried rim
1991 and 2000 have vertical hallmarks



1983
London
turquoise stones and wire work
import mark
Mexico



1983
London
fairies
import mark
Topazio Portugal



1985
London
HARRODS lettered vertically
with etched flower
galleried rim

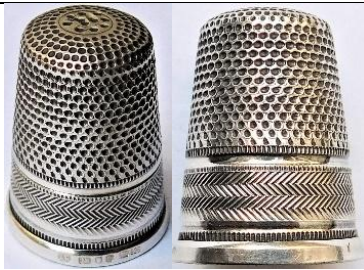


1989 1990
London
925
swans
there is an extra mark for the Queen's Award for Export Achievement
an identical design made by **MH**



1988
London
925
filigree
London import mark
Yemen





1988
London



1989 1994
London
marcasite flower attached
galleried band with vertical hallmarks



1990
London
925
London's Houses of Parliament
London import mark
Topazio Portugal



1991
London
925
porcelain Rose Primrose and Pansy applied
vertical hallmarks
galleried rim



1991
London
filigree



1993
London
925
turquoise



1994 2001 2009
London
925
copy of **SF** Medusa Head



1994 1999 2004
London
925
marcasite swallow attached
red ruby eye
galleried rim





1995
London
925
cupids angels cherubs



1999 and unassayed
London
onyx and crystals around apex
with crystals at rim - size 3



London
acanthus swirl
London import mark
Topazio Portugal



London
butterfly
London import mark
Topazio Portugal



London
cat
London import mark
Topazio Portugal



London
shamrock
London import mark
Topazio Portugal



filigree
London import mark
Yemen



marcasite fleur de lis attached
galleried rim



HARRODS lettered horizontally



Ari D Norman thimble box London with 2018 set of hallmarks on inner lid

Vita Nutayakul (VN)

Thai Designs Dist. Ltd
Wembley Middlesex



1978
London
Thai design



1979
London
floral etching



Ken Palmer (KP)



1986
Birmingham
nature scene
domed stone
fluted rim



1987
Birmingham
Bees' scene all round
opal inset in apex
fluted rim



1987
Birmingham
rural scene
paua shell in apex
fluted rim

Pattison & Son (P&S)

Thirsk North Yorkshire
still in operation as jewellers in 2023



1983
Sheffield



Geoffrey Payne (GP)



1992
Birmingham

Sheffield Assay Office (SAO)



1996
Sheffield
Whitby Abbey
with Whitby jet apex
see also: Ralph Weston

Douglas Pell Silverware (DP)

Sawbridgeworth

they are wholesalers and most of their thimbles have been made outside of the UK



1988
Birmingham



1989
Birmingham
similar design to **B&Co - MK - nt E&Co**



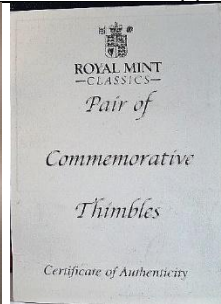
1990 1997
made by **AN**



2004
Birmingham
925
'Harrods KNIGHTSBRIDGE'



2006
Birmingham
925
applied thurpence

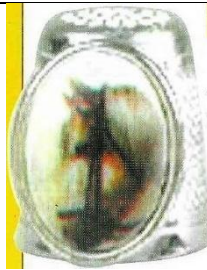


2006
Birmingham
commemorating Queen Elizabeth's 80th Birthday
commissioned by Royal Archives Royal Mint
500 pairs
design based on 80th Birthday Royal Mint medal



2007
Birmingham
925

bunch of grapes 14 rubies around rim
see similar design **AJP**



2007
Birmingham
925

horse inset



2007
Birmingham
925

leaves - pink flower on apex



2007
Birmingham
925

Wedgwood inset with angel

Andrew (Andy) J Poole (AJP)

Birmingham

The Silverware Shop

where there are no hallmark dates, the thimbles are stock items - if yours has a hallmark date, please share



1982
Birmingham



1985
Birmingham
'Harrods'



2002
Birmingham
925



2003
Birmingham
925



2006
Birmingham
amethyst stones at rim



2006
Birmingham
925
applied fish and flowers



2006
Birmingham
925
alternating ruby & sapphires stones
around raised rim



2006
Birmingham
925
ceramic rose inset



2006
Birmingham
thistle



2006
Birmingham
925
hand engraved



2006
Birmingham
925
applied grapes
rubies around raised rim
see similar design **DP**



2006
Birmingham
925
pink enameled flower on apex



2007 Birmingham
anchor



2007
Birmingham
flower with dropped rim on two sides



2007
Birmingham
'Welsh Thimblers 2007'
Prince of Wales feathers
limited to **29**



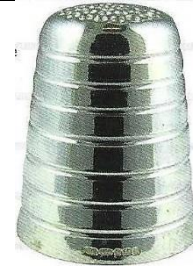
2007
Birmingham
St Christopher



2007
Birmingham
dolphin



2007
Birmingham
commemorating The 10th Conference Dorset Thimble Society
applied dolphin



2008
Birmingham
seven engraved rings



2009
Birmingham
ceramic rose inset



2009
Birmingham
commemorating 11th Conference Dorset Thimble Society
applied thimble



2011
Birmingham
commemorating 12th Conference Dorset Thimble Society



2012
Birmingham
dragonfly



2012
Birmingham
925
applied grapes



2012
Birmingham
commemorating Diamond Jubilee of Queen Elizabeth II
Jubilee hallmark used as part of design



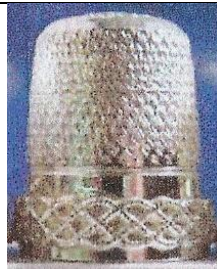
2013
Birmingham
925
precious stones around centre



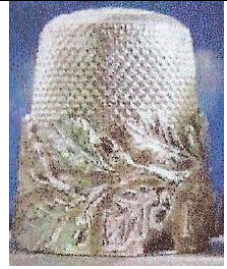
2013
Birmingham
925
precious stones around rim



2017
Birmingham
applied treble clef



garnets form the grapes



very wide band of oak leaves



large flowers



additional mark for **TCG** – commissioned by them



Wedgwood inset with harpist

RE Porter (REP)

Bournemouth
probably made by **JS&S**



1981
Birmingham
similar design to **A(M)&Co - SMCo**

Diane Jacqueline Radley (DJR)



1981
London
 stippled surface

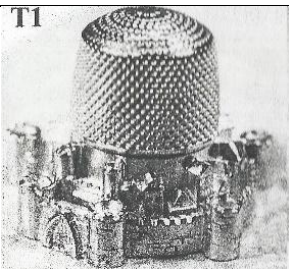
Rayment & Hull (R&H)

Isle of Thanet Kent

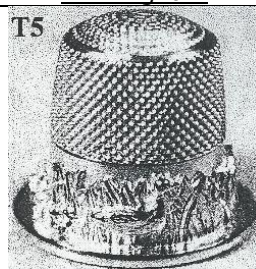
Neil Rayment and Robert Hull trained at Medway College of Art and Design. They founded Rayment & Hull in 1990 as goldsmiths and silversmiths. They won Designer of the Year in the UK Jewellery Awards in 1994 where there are no hallmark dates, the thimbles are stock items – if yours has a hallmark date, please share they undertook commissions ceased making thimbles in 2002



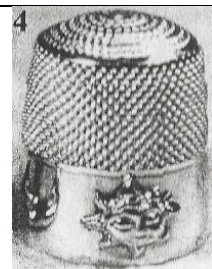
1997
Birmingham



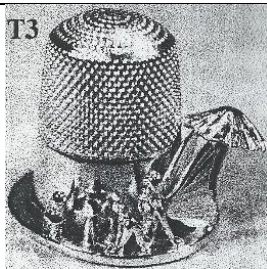
T1
 medieval
 applied Gothic castle and turrets
 around rim



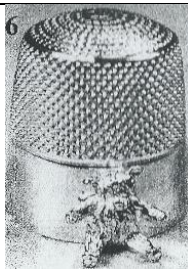
T5
 country
 Mother Goose and four goslings in
 rushes around rim



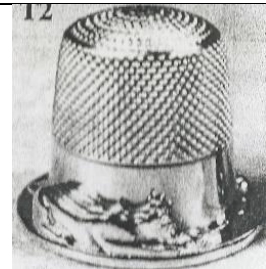
4
 day and night
 happy faces of sun and moon



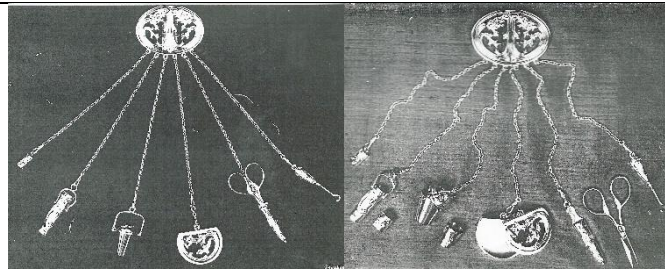
T3
 fairy tale
 fairy resting against a mushroom
 around rim



6
 memories
 teddy bear applied to rim



12
 mousing around
 a game of cat and mouse around rim



chateleine contains 6 chains of needlework tools
including thimble in thimble bucket
two views

Ludwig Redl (LR)

Vienna

Most known for designing the 1984 American Revolution commemorative set. See **GJD** (in part 1 A-H)

The Shakespearian and Wagner Ring sets bear LR maker's marks

Britannia silver, finished in 24ct gold and gilded inside. Plain polished apex and rim

The Ring of Nibelungen set of four with 250 sets planned tho probably only 20 sets produced by 1988.

The Shakespearian is a set depicting three of Shakespeare's plays. They were made in pewter for sale at The Globe - only 50 sets were made in sterling



1983

London

The Last Supper

R: silver-plated bronze



1984

London

Hamlet

To be or not to be that is the question



1984

London

Macbeth

Is this a dagger which I see before me?



1984

London

Romeo and Juliet

Romeo Romeo wherefore art thou Romeo



1984
London
 Macbeth
 Is this a dagger which I see before me?
 sterling silver edition



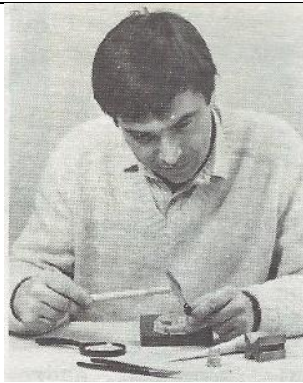
1984
London
 Der Ring des Nibelungen
 boxed set of four finished in 24ct gold, showing the four most important scenes in the Wagnerian opera
 (set no) 225 lettered on apex
 REDL lettered in addition to hallmarks



differently boxed set



1984 1985
London
925
 Claddagh ring, gilded with 24 carat gold
 L: b&w photo



Ludwig Redl at work 1984

Russell C Rimes (RR)

Sheffield

thimbles by this maker exist in copper with stone apexes



1985
Sheffield

mother-of-pearl set flat into apex



1986
Sheffield

unusual indentations on apex



1986
Sheffield

blue stone indented flat apex
© in apex



1989
Sheffield

unusual indentations on apex



Rimes worked as silversmith and spinner in David Mellor's Park Lane workshop in Sheffield for sixty years - 1974

John Ritchie



1986

Edinburgh
Robbie Burns atop
vertical hallmark
b&w photo

Stephen J Rose (SJR)

London

John and Arthur Rose first registered their mark at the Birmingham assay office in 1932. John Rose was incorporated into SJ Rose and Sons of London in 1972

this maker has distinctively-shaped thimbles – most have a recognisable engine-turned stippled or brushed finish with bright-cut patterning. I have included all examples as each has a slightly different finish - many examples have the hallmarks upside-down, which would be facing the sewer when used on the finger. Sizing 4-6 (15.5mm-17mm)

Some of these size marks are lettered up in the apex

There is a Provisional Patent No **53211** on some of SJR's early thimbles. What was being patented?



1965

Birmingham
Pro.Pat 53211
also available in 9ct gold



1966

Birmingham
Pro.Pat 53211
size 8 in apex
R: marks upside down



1965
Birmingham
Pro.Pat 53211 – size 3
mirror image maker's mark



1966
Birmingham
size 4
marks upside down



1966
Birmingham
Pro.Pat 53211
size 7
marks upside down



1967
Birmingham
marks upside down



1967 1970 1971 1976
Birmingham
+ England (L)
marks upside down
two narrow faceted bands



1967
Birmingham
+ England
marks upside down



1967 1968
Birmingham
marks upside down



1967 1971
Birmingham
marks upside down



1967
Birmingham
+ England
marks upside down



1967
Birmingham
+ England
two narrow faceted bands
marks upside down



1968
Birmingham
handpainted roses on textured band
two narrow faceted bands
marks upside down



1968
Birmingham
marks upside down
this is a popular design from SJR but
there are always some differences



1969
Birmingham
 handpainted roses
 two narrow faceted bands
 marks upside down



1969 1970 1974
Birmingham
 two narrow faceted bands
 marks upside down
 R: + 'England'
 L: showing marks to face sewer size 5



1970
Birmingham
 marks upside down
 R: did SJR forget to add the patterning after assaying?
 both sized in the apex for size 1



1971
Birmingham
 marks upside down



1972 1992
Birmingham
 JUST A THIMBLEFUL (R lettering upside down)



1972
Birmingham
 handpainted roses
 (different from 1969)
 two narrow faceted bands



1973
Birmingham
 apexes are decorated with a snowflake-type surface
 two narrow faceted bands
 L: marks upside down - R: marked 'England' - size 5 in apex



1973
Birmingham



1975
Birmingham
 patterned apex
 two narrow faceted bands



1975 1982
Birmingham



1976 1982
Birmingham
stone apex
size 9



1977
Birmingham
handpainted stylised flower band
two narrow faceted bands



1977
Birmingham
handpainted roses
two narrow faceted bands
(different from 1969 and 1972)



1978
Birmingham
marks upside down + size 2



1981
Birmingham



1983
Birmingham
mirror image maker's mark

Margarette Elizabeth Round (MER)



1973
London
well defined glittery surface

David Scott-Walker (DSW)

Sheffield

David's thimbles were also available thru The Thimble Guild in Scotland during 2001-2004. Some of the thimble names are from their catalogues

the set of 32 dated between 1993-2000 has semi-precious stones in the apex and plain polished sides the set depicts the last eight years of British hallmarking as EEC pre-1999 regulations where compliance saw many of the British hallmarks disappear. Shows the assay marks of the four major assay offices. 100 sets each thimble has the hallmark year, the assay office mark, the standard mark (lion passant) and the maker's mark, as part of the design



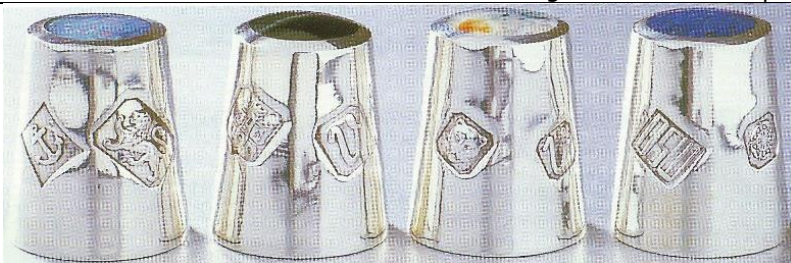
1993

Sheffield: Mexican crazy lace
 London: Brazilian red banded agate
 Edinburgh: Brazilian red banded agate
 Birmingham: Philippines black mother-of-pearl



1994

Sheffield: Moss agate
 London: Blood stone
 Edinburgh: Carnelian
 Birmingham: Mother-of-pearl



1995

Birmingham: Opal
 Edinburgh: Blue tiger eye
 London: Red moss agate
 Sheffield: Lapis lazuli



1996

Sheffield: Bottle green malachite
 Edinburgh: Black onyx
 Birmingham: Blue John
 London: Brown brachated jasper



1997

Sheffield: Turquoise
 Birmingham: Italian brown onyx
 London: Green banded agate
 Edinburgh: Tiger eye



1998
 London: Namibian blue lace
 Sheffield: Stripy brown agate
 Edinburgh: Turitella
 Birmingham: black and white agate



1999
 Birmingham: Yellow agate
 Edinburgh: Purple agate
 London: Pink agate
 Sheffield: Blue moss agate



2000
925
 London: Sodalite
 Sheffield: jet
 Birmingham: Yellow crazy lace
 Edinburgh: Fancy jasper



1982
Sheffield
 ring with applied flower
 stone apex



1982
Sheffield
 ring with applied flower
 speckled stone apex



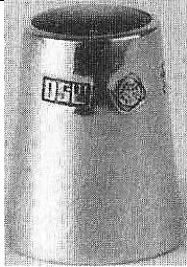
1983
Sheffield



1983
Sheffield
 black onyx apex



1983
Sheffield
 amethyst



1983
Sheffield
mother of pearl apex



1984
Sheffield
blue John stone apex



1985
Sheffield
mauve stone



1992
Sheffield
stone apex



1992
Sheffield
stone apexes R: jet
part of set of 12



1995
Birmingham
Blue John stone



1995
Birmingham
Blue John stone



2000
925
Millennium



2001
zigzag diamond



2001
fern



2001
zigzag



2002
925

commemorating Queen Elizabeth's Golden Jubilee set of 4
using hallmarks with Diamond Jubilee mark as part of design
Edinburgh: Blue agate
Birmingham: Red agate
London: Purple agate
Sheffield: Mother-of-pearl



2003
double scrolls



2003
Sheffield
double scrolls
black stone apex



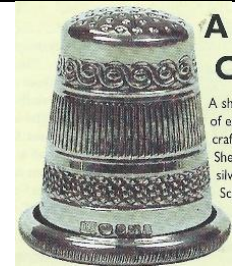
2004
scrolls



2004
Herringbone



2004
Sheffield
925
black onyx apex



2005
925



black stone
leaves and flower band
black stone



double scrolls



moonstone in apex



red carnelian
stippled surface

Gerald Sheehan (GS)

Llantrisant Wales

created for the Royal Mint

between 2002-2006 Sheehan was the Chief Executive and Deputy Master of the Royal Mint

Set 1: The designs were inspired by the national emblems used on coins

the presentation boxes' ribboning for this set of six Classics is lettered Douglas Pell

Is Pell the maker for these Royal Mint thimbles, using the GS mark as the maker's mark?

limited to **500** sets

thimbles are quite wide having a 20mm diameter

There are other similar Royal Mint thimble sets but they bear no hallmarks, just '925' – included here for completeness



2002 2004
London + import mark
 925
 Scotland Scottish thistle
 taken from Scottish £1 coin



2004
London + import mark
 925
 England Tudor rose
 taken from 1983 £1 coin



2004
London + import mark
 925
 Northern Ireland Irish shamrocks
 taken from Northern Ireland £1 coin



2004
London + import mark
 925
 Wales Welsh leeks
 taken from £1 coin



2004
London + import mark
 925
 laurel
 wreath taken from the English sovereign coin



2004 2005
London + import mark
 925
 Floral
 wreath taken from the English Coronation crown coin



Classics 2004 presentation box set showing Douglas Pell lettered on ribboning



there is an additional mark on the 2005 thimbles – for the Tower of London
 Hallmarks L>R: Tower of London mark – maker’s mark GS – Lion passant – 925 – London’s assay mark of
 Leopard’s head – ‘f’ for for 2005 (Floral)

There is a set of six thimbles featuring historic sites around London
 It’s not known whether they bear any hallmarks. Maybe 925?



Big Ben



Buckingham Palace



Tower Bridge



Tower of London

There are six Royal Mail – marketed as Royal Mint -Classics- thimbles, which are lettered – Clifton Suspension
 Bridge – SS Great Britain – Royal Albert Bridge – Brunel Isambard Kingdom – Paddington – SS Great Eastern
 The thimbles are smooth-sided with the design in relief
 Marked 925



Clifton Suspension Bridge



SS Great Britain



Royal Albert Bridge



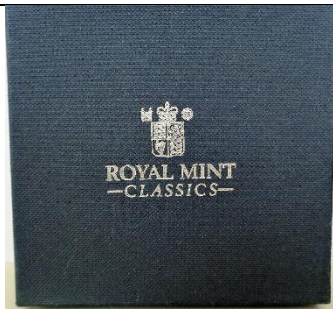
Brunel Isambard Kingdom



Paddington



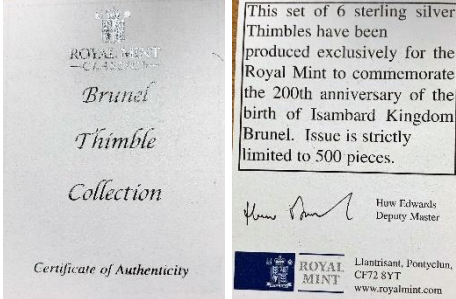
SS Great Eastern



boxed set



open boxed set



There are six Royal Mint Classics, Battle of Trafalgar commemorative thimbles (1805-2005) as a boxed set which are lettered – Nelson - Expects (enamelled semaphore flags) – Victory – October 1805 – 200th anniversary (compass) - Battle
The thimbles are ribbed with the design in relief
Marked 925



Harvey R Sillis (HRS)

Potters Bar Hertfordshire

Sillis' thimbles were also available thru The Thimble Guild in Scotland 2001-2005. Some of the thimble names are from their catalogues

there is a large range in the thimble weights = 9.1-23.2 grammes

additional mark of IPG indicating Sillis is a Fellow of the Institute of Professional Goldsmiths



2001

London

925

Four Panels

14.5 grammes

additional mark of IPG indicating Sillis is a Fellow of the Institute of Professional Goldsmiths



2001

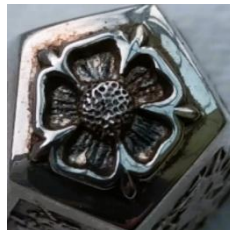
London

925

Pierced Diamond Trellis

9.1 grammes

additional mark of IPG indicating Sillis is a Fellow of the Institute of Professional Goldsmiths



2002

London

925

commemorating Queen Elizabeth's Golden Jubilee - heraldic statues of The Queen's Beasts

five of the mythical beasts are: Unicorn of Scotland - red Dragon of Wales - Griffin of Edward III - Lion of England -
on five sided thimble

rose on apex and the Golden Jubilee special extra mark

18 grammes



2002
London
375
 9ct gold
 20.5 grammes
 limited to 2



9ct and 925



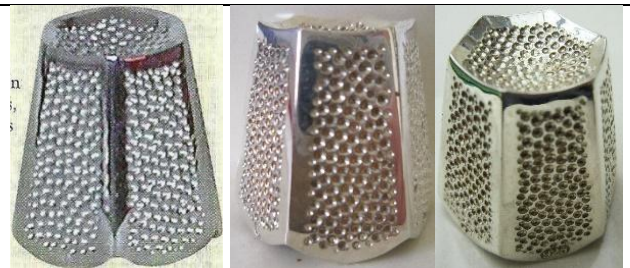
2002
London
925

commemorating Queen Elizabeth's Golden Jubilee with national emblems
 Scottish Thistle - Irish Shamrock - Welsh Leek on sides - English Rose on apex
 the Golden Jubilee special extra mark
 also available in silver-gilt and 9ct gold
 16.4 grammes



2002 2003
London
925

Cupcake
 hallmarks on each of the 'slices'
 17.4 grammes
 additional mark of IPG indicating Sillis is a Fellow of the
 Institute of Professional Goldsmiths



2002
London
925

Petals
 six-panels like petals with speckles spots with dished
 apex
 18.5 grammes



2002
London
925

Silver petals
 18.3 grammes

accompanying certificate has a couple of errors



2003
London
925
 Grid

pierced diagonal grid in shape of a square
 13.9 grammes



2003
London
925
 Thread

23.2 grammes



2003
London
925

All Square
 also available in 9ct gold
 18.3 grammes



2003
London
925

21st birthday of The Thimble Guild
 cutaway design
 16.4 grammes
 also available in 9ct gold

additional mark of IPG indicating Sillis is a Fellow of the Institute of Professional Goldsmiths



2004 2005

London

925

Geometric
pierced zizags
zigzag on apex

additional mark of IPG indicating Sillis is a Fellow of the Institute of Professional Goldsmiths
11.6 grammes



2004

London

925

Surf's Up!
pierced
13.3 grammes



2004

London

925

Ripples



2005

London

925

Battle of Trafalgar
200th Anniversary showing HMS Victory
with anchor in relief on apex



2005

London

925

10th anniversary of the death of Diana Princess of Wales 31.8.2007
L side: roses - R side: hearts - apex: her coat-of-arms



2005
London
 925

60th wedding anniversary of Queen Elizabeth and Prince Philip
 diamond set into apex above '60'



2012
London
 925

The Diamond Jubilee of Queen Elizabeth 1952-2012
 showing in panels: Royal regalia – HM coat-of-arms – the Coronation Chair with diamond in apex
 additional mark on apex of IPG indicating Sillis is a Fellow of the Institute of Professional Goldsmiths
 and the Diamond Jubilee special mark



Presented by Harvey R Sillis FIPG
To Her Majesty Queen Elizabeth II
To commemorate both Her
Golden and Diamond Jubilee



N St J Paint & Sons (NSHP)

St Peter's Port Guernsey Channel Isles

they undertook commissions



1999

London

applied gilded Nautilus shells
four different rims – plain – wavy rope-like – beaded - galiered
includes Millennium mark

Howard Malcolm Stearn (HMS)



1982

London



1982

London

Sterling Merchandising Company (SMCo)

Kent

probably made by **JS&S**



1981

Birmingham

similar design to **A(M)&Co – REP**



1981

Birmingham



1981

Birmingham



1982

Birmingham

Swatkins Group (P&S)

Walsall West Midlands
probably made by **JS&S**



1979 1992
Birmingham
stippled surface
similar design to **M&A**



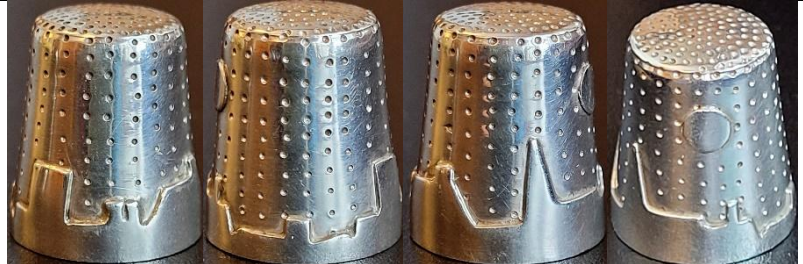
1979
Birmingham

Caroline Marie Taylor (CMT)

London



1979
London
Heavenly Skies



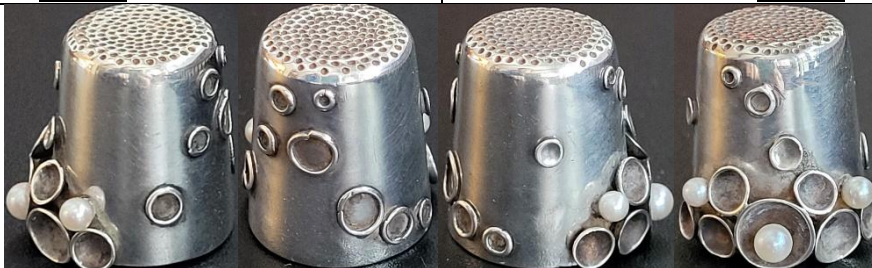
1979
London
stylised skyline



1980
London



1980
London



1980
London
incorporating pearls

The Thimble Collectors Guild (TCG)

Biggar Scotland

made by various thimblemakers but when the TCG maker's mark is used, they are only featured here. TCG maker's mark was registered in 1989 for thimbles sold thru their thimble catalogues. This promoted British silversmiths to collectors around the world – Frank Jones of Swann Thimbles was the principal thimble maker during this period in the UK



1989
Edinburgh
made by **PDAC**



1989
Birmingham
Lord's Prayer written on thread thru
needle
daisies apex
made by **S(T)**



1989
Birmingham
applied Coach
daisies apex
made by **S(T)**



1989
Birmingham
A Gift of Love
part of a series recreating Victorian slogan thimbles
made by **S(T)**



1989 1990
Edinburgh
four assay marks as design
made by **PDAC**
limited to **950**
The Guild commissioned one in 9ct gold



1989 1995
Birmingham
made by **S(T)**



1991
Birmingham
made by **S(T)**



1992 1994
Birmingham
made by **S(T)**
his replica of a Dorcas Flora
pattern



1992
Birmingham
made by **S(T)**
his replica of a Dorcas
Diamond pattern



1992
Birmingham
with bands of rubies and diamonds
commemorating 40 Years of QEII's Ascension to
the Throne
made by **S(T)**



1993
Birmingham
 with rubies
 commemorating 40 Years of QEII's Coronation
 made by **S(T)**



1994
Birmingham
 made by **S(T)**



1995
Birmingham
 commemorating 50 Years of VE Day
 made by **S(T)**



1995 1996 1998 1999
Birmingham
 made by **S(T)**



1995
Birmingham
 1996
 with thistles on band



1996 1997 1998
Birmingham
 Windsor Castle
 made by **S(T)**



1997
Birmingham
 made by **S(T)**



1998
Birmingham
 made by **S(T)**
 inscribed 1900-1998
 commemorating Queen Elizabeth the
 Queen Mother's 98th birthday
 with stone apex



1999
Birmingham
 made by **S(T)**



2000
Birmingham
925
made by **S(T)**



Birmingham
925
made by **S(T)**



Birmingham
stone apex
made by **S(T)**

Thimble Society of London (TSL)

made by various thimblemakers for sale to members of the TSL. These commissions provided an outlet for British thimblemakers over the period of 1981-2009. TSL should be congratulated on the huge number of thimbles they commissioned over a nearly 30-year period

the makers' names were rarely revealed to members especially in the early days, tho James Swann & Son (JS&S) were commissioned for many of the TSL commemoratives. I will move (or remove) them from here once the maker's marks have been identified (other than JS&S who was too prolific a thimble maker to feature in this topic)



1982
Birmingham
commemorating first Anniversary of London Thimble Society 1982
malachite or moss agate stone in silver-gilt apex
commissioned by Thimble Society of London
maker: **D&F**



1982
Birmingham
commemorating Raising of the Mary Rose + 9ct gold
commissioned by Thimble Society of London
TSL is engraved under the exact replica of the ship
maker: **JS&S**
limited to **50**



1983
applied enamel City of London coat-of-arms
The Thimble Society of London lettering on blue enamelling around apex with 1983 in the centre
1983 on verso



1983
Birmingham
Bernard Weatherill elected Speaker 15th June 1983
'T.S.L.' included as Weatherill was also a member of the Thimble Society of London
Parliamentary mace in relief on verso
tailor's thimble (as Weatherell was from a famous family of tailors – Weatherell Bespoke Tailors)
beaded rim
maker: **JS&S**



1983
Birmingham
 applied blue enamelled rosette
 commemorating Mrs Thatcher returned General Election
 maker: **JS&S**



1984
Birmingham
 applied London coat-of-arms
 commemorating Dame Mary Donaldson Elected Lord Mayor of London 1983 to 1984
 2nd R: 9-ct gold
 R: silver-gilt version
 maker: **JS&S**



1984
Birmingham
 blue, brown or green apex



1985
Birmingham
 A Stitch in Time
 blue enamelled lettering around band and blue
 enamelling on apex
 also available in silver-gilt
 limited to **60**
 maker: **JS&S**



1985
Birmingham
 Queen Elizabeth the Queen Mother 85th birthday
 4th August 1985
 limited to **60**
 maker: **D&F**



1985
Birmingham
 Ted Hughes the Poet Laureate 9th December 1984
 blue enamelled lettering around band and blue
 enamelling on apex
 also available in silver-gilt
 limited to **60**
 maker: **JS&S**



1986
Birmingham
 Her Majesty the Queen 60th Birthday
 maker: **JS&S**



1987
 Quilter's thimble



1989
Edinburgh
 made to commemorate TSL's Annual General Meeting
 TSL applied on the front
 AGM Sep 1989 Cambridge



1990
Birmingham
 hammer and sickle on smooth sides
 Mikhail Gorbachov Nobel Peace Prize Winner 1990



1990s
 Phoenix and Dragon pair
 engraved design



1991
 'TSL 1981-1991'
 10th anniversary with two 'jewels'
 maker: **Greif, Germany**



1992
 commemorating Anniversary of Sinking of the Titanic
 hand-engraved, with sketches
 limited to **500**
 maker: **Refia**



1994
 replica of a mid-17th century Cromwellian
 Commonwealth thimble with T S L in large capitals
 around the body of the thimble
 Roman numerals MCMXCIV for 1994 lettered around rim
 gold edition was offered at the time

Mike and Sylvia Thorpe (T)

Sark Channel Islands

formerly of Clos de Vaul Creux

these handmade thimbles are not assayed but have the T maker's mark on a map outline of Sark.



The makers left Sark in 2000



child's size - measuring 12mm in height, 9mm in diameter
1.1 grammes

Trevor Towner (TT)

12 High Street Petersfield Hampshire

Freeman of the Goldsmiths Company

Towner was apprenticed at 15 for five years as an ecclesiastical silversmith

He then moved to London and worked for Stuart Devlin, the famous Australian-born gold and silversmith

In 1982 Towner opened his own business in Hampshire

trevortowner.co.uk



1977

London

roses and leaves

applied gilt flowers and leaves on stippled ground

was the created to commemorate the Silver Jubilee of HM Queen Elizabeth II

similar design to **HOL - M^N&W^B**



1991

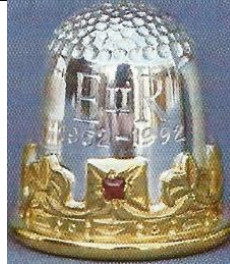
London

'Petersfield'

showing 18th century statue of William III which is situated in Petersfield's market square

this is one of a limited edition - no. 4 lettered on verso (no. 2 is in thimble box)

Petersfield is where Towner has his studio



1992

London

commemorating 40 Years Queen Elizabeth's Coronation

inset ruby

commissioned by Thimble Society of London



2006

London

commemorating Queen Elizabeth's 80th Birthday

silver gilt and rhodium 80 on apex

limited to **100**



2007

London

commemorating Queen Elizabeth's Diamond Wedding
 rhodium plated silver bells on sterling silver or silver-gilt have EIIR on one – PP on the other
 thimbles' limited number above hallmark
 in TT jeweller's box



2011

London

commemorating the Marriage of Prince William
 rhodium plated ribbon William & Catherine 29.4.2011
 seed pearl and cabochon garnet on flowing ribbon are birthstones of the couple – TT lettered on verso
 limited to 100
 thimbles' limited number above hallmark
 in TT jeweller's box



2012

London

commemorating 60th Diamond Jubilee of Queen Elizabeth
 showing the Thames Jubilee Armada
 diamond set in apex
 thimbles' limited number above hallmark
 in TT jeweller's box



Trevor Towner and display of his thimbles
Dorset Thimble Society 2008



Jill and Trevor (centre)

Gold stars (l to r): Charlotte Hill, Rachel Smith,
Susan Williams, Jill and Trevor Towner, Steven
Edwards, Susan Warren, Emma Blum
Photo by Chris Warren

Troika Designs Ltd (TD^{LTD})

Birmingham



1982

Birmingham

L: DL - R: DDG in cursive lettering

Malcolm Keith Turner (MKT)

St Giles Street Norwich
some were imported



1996

London

925

import mark
applied elephant
made in Thailand

Lee Tyers (LT)

Nottingham

Lee is the Director of Repousse Ltd. From 2014 their thimbles are not hallmarked. They use the lost wax casting method, which gives clumsy definition



2004
Birmingham



(2025)
925
arts and crafts



(2025)
925
butterflies



(2025)
925
dhow
copy of Topazio thimble



(2025)
925
dhow
extra mark at right



(2025)
925
face
copy of Shirley Frost thimble



(2025)
925
dhow

P H Vogel & Co (PHV&C)

Birmingham



1964
Birmingham
Just a Thimbleful



1972
Birmingham
JUST A THIMBLEFUL 1 1/2 OZ

Laurence R Watson & Co Ltd (LRW)

Sheriff Hutton York

manufacturers of hallmarked silverware since 1966



1981
Birmingham



1983
Birmingham



1984
Birmingham



2001
Birmingham
925
gilt Bee atop beehive shape

Wensum Lodge Silversmiths (WLS)

Norwich



1984 Sheffield

Ralph Weston (RW)

Kells Gold & Silversmiths (Whitby) Ltd

Whitby

Kells Gold and Silversmiths was formed in 1989 on the Island of Mull. Ralph Weston designed a range of Celtic jewellery inspired by the beautiful islands of the Inner Hebrides and the illuminated manuscripts from the Book of Kells. He set the wonderful gems of these islands in his own exquisite pieces of jewellery. He trained and worked in Sheffield and Derbyshire, where he set the unique stone of the area, Blue John and having connections in Yorkshire, hand-cut and set, Whitby jet, supplying many shops in Whitby. Ralph Weston Designs are now based in Eyam Derbyshire

Many of his thimbles are not assayed – simply marked SILVER
see also: Sheffield Assay Office



1997 1999 2000

Edinburgh

Whitby Abbey

with Whitby jet apex

(1997 version at top L is missing maker's mark RW)

bottom: 2000 has 2000 mark + 925



'Silver'
with onyx apex



'Silver'
with backed stone apex
rope rim



'Silver'
rope rim



'Silver'
blue stone
rope rim

John Wightman & Sarah McKechnie Bell (J&SB)

outside **Edinburgh**

they described themselves as amateur lapidaries and silversmiths



1987

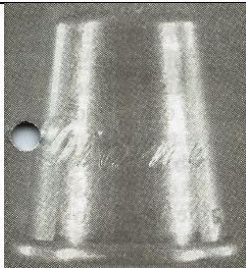
Edinburgh

hallmarks are lettered inside the thimble

Wilkinson Silversmiths (WS)

Birmingham

in 1987 The Thimble Guild in Scotland offered the opportunity to have a first name engraved



1987

Birmingham

DIANA



1987

Birmingham

IVY



1987

Birmingham

MARY

Barry M Witmond (BMW)

Stamford Lincolnshire

goldsmith and silversmith

formed his company in 1976



2003

London

applied Wheat Sheaf

References

- Vanessa Frisbee *The wonderful world of Norman Grant*. www.modernsilver.com/normangrant.htm
Jane Chantler Ltd. Silversmith & thimble maker. [Welsh Thimblers](#) issue 52, autumn 2003
Diane Pelham Burn *Welcome to the newcomer*. [At Your Fingertips](#). January 2009
Sue Pickles *Thimbles by Andrew J Poole*. [Welsh Thimblers](#) issue 51, July 2003
Rayment & Hull silversmiths & goldsmiths. [Welsh Thimblers](#) issue 30, April 1998
The Thimble Guild *Catalogues*
Thimble maker: Jane Chantler, England. [TCI Bulletin](#) summer 2008
20th century thimble makers: Wood Yard Gallery. [Welsh Thimblers](#), issue 45, January 2002
www.silvermakersmarks.co.uk

Contributors

Wendi Aguiar | Linda Bennett | Joanna Blackie-Sew Many Bits | Bleasdales | Yolanta Bogdziewicz | Pawel Brzyski
Beryl Crago | Dorset Thimble Society | Joan Gale | Charlotte Goldberg | Karen Green (LAO) | Lydia Hamilton
Linda Heggs | William Isbister | Denise Jenkins-Welsh Thimblers | Barbara Kelly | Caroline Meacham-Elegant Arts
Terry Meinke | Ray Nimmo | Maurice O'Reilly | Sue Pickles | Diane Poesk | Wendy Ritchie | Wolf-Dieter Scholz
Clara Sennheim | Marina Shcherbatyuk | Norma Shattock | Jean Shoup-Thimbles Only | Jean Taylor | Rose Todd
Sue Wilson | Julie Winston | Sandi Wood

This listing of Modern British sterling silver thimble makers does not purport to be complete or accurate in all aspects.
Rather it invites comments and contributions to add to our knowledge. My thanks to the contributors.

EMAIL thimbleselect@bigpond.com TO SHARE YOUR KNOWLEDGE

© **Sue Gowan**
March 2016