

# Interesting lettering and symbols on thimbles

## including thimbles of thimble clubs, collectors and societies etc

### as well as thimbles with cryptic pictorial messages

Are you fascinated by various lettering – not the hallmarks nor the maker's marks – but something more specific - on your thimbles? Sometimes it is lettering of a commemorative or an historic event, others just inscribed with some unusual words or symbols. None of the following thimbles fall into any previous *Learn More About...Thimbles* topics: not advertisements, slogans, scenic, placenames, patents, brands etc.

Some of the lettering is on an applied badge – probably done at the time of the commission?

It is as broad as thimble collecting but the occasion for the lettering or words or symbols is largely unknown: all eras (but largely ignoring contemporary thimbles), all countries and different materials are included, concentrating on the unusual. Who made some of the thimbles – for which occasion, tho some are self-explanatory – were they one-offs or made for commercial purposes? If they are of sterling, we usually know the maker.

I will remove the thimble if it becomes part of a new topic.

Quite a few have military connections, many from World War I. I have found a few examples of war **propaganda** thimbles, and I have included them here, having no other place for them.

You will notice a preponderance of thimbles for various [thimble clubs](#) or [thimble collecting](#), [sewing](#) etc – they just need to be recorded.

I don't believe these are jeweller's inscriptions or monograms added after manufacture, in a cartouche.

I first encountered many of these thimbles in the *Thimble Society of London* catalogues. Most are rare and very few examples have been encountered: so well worth recording for posterity? I have combed Gay Ann Rogers, Edwin Holmes and John von Hoelle's thimble books for any clues. Those books date from the 1980s and our knowledge has moved on.

I would love for this topic to become a repository of oddities, mystery thimbles – the more cryptic the lettering, the better.

Some are included here just to record them as they are rare. They are made of sterling silver, gold, brass, steel, copper and aluminium, even a few china and plastic.

In 2022 I added a section at the end: thimbles from 18<sup>th</sup> and 19<sup>th</sup> century that have pictorial or 'cryptic' messages around the band in the form of everyday objects. One day the meaning of these messages may become apparent, so recorded here for that time.

see also: *Who made these named thimbles* topic

The listing is in alphabetical order of the lettering.



Birchcroft

**3<sup>rd</sup> ЕВРЕЙЧЕТА СОФИЯ**



brass

red rubbed off band

Bulgarian: Na Sofiiskite Evrei - English: To the Hebrews of Sofia  
with Star of David

Germany

1890s-1910s

**4 - H CLOTHING 1949** and **"4 - H CLOTHING 1983"** and **"4 - H CLOTHING, 1984"**



Simons Philadelphia

award winners' thimbles

top L: sterling silver with gilt band

bottom R: unknown year

**5 MEI 1945-1985**



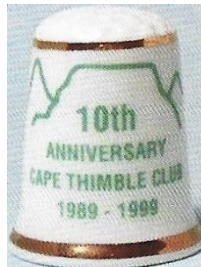
Pako Netherlands  
applied symbol of dove of peace on flag colours of Netherlands

**10 1984-1994 S.A.T.C.**



handpainted by Gili Davis  
porcelain

**10th ANNIVERSARY CAPE THIMBLE CLUB 1989 - 1999**



Frika Collection  
china  
background outline Table Mountain

**10th Anniversary Thimble Guild 1970 - 1980**



Georgia USA  
plastic



Woodsetton Dudley UK  
lacquered copper  
knitting implements etched on verso

18.7.1975 IRJA MARTII 2009



Germany  
gold  
Finnish thimble collectors

20 JAHRE FINGERHUT MUSEUM 1982-2002



Thorvald Greif Germany  
925  
lower: enamelled 925

21



Simons Philadelphia  
sterling silver  
Seattle World Fair 1962

40



commemorating 40 years of South African Thimble Club 2024  
3D printed

**50<sup>th</sup> ANNIVERSARY MALTA GEORGE CROSS**



James Swann & Son Birmingham

90



Settmacher Vienna Austria  
copper with '90' applied (2002)  
'My 90 life thimble' Franz Groiss, Settmacher (1912-2005)

## 250 YEARS HANDEL'S MESSIAH 1743-1993



James Swann & Son Birmingham 1993  
maker's marks are lettered in the apex so had been missed

## 1788-1988



sterling silver  
Australia's bicentenary commemorative for Embroiderers Guild of NSW  
Guild's logo on verso

## 1889 PARIS



Alfred Féau France  
800 silver

## 1889 PARIS-EXPOSITION/1889 EXPOSITION



Alfred Féau France  
800 silver



Roger Lenain France  
800 silver

marked FRANCE with size #9 1970s reissue

Beryl Frank: In the 1970s Roz Belford, an astute retailer of thimbles ... discovered that Lenain had stored the original dies for their thimbles ... Some of these thimbles were reissued for export to the United States. ... The size is marked on the thimble ... If FRANCE is stamped on the thimble, it was made in the 1970s."

this reissue uses hyphens to separate the words – using the longer phrase



## 1900 PARIS



Alfred Féau France  
800 silver

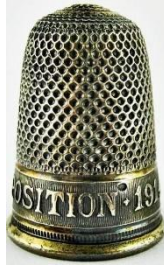


Roger Lenain France  
800 silver

marked FRANCE with size #9 1970s reissue

Beryl Frank: In the 1970s Roz Belford, an astute retailer of thimbles ... discovered that Lenain had stored the original dies for their thimbles ... Some of these thimbles were reissued for export to the United States. ... The size is marked on the thimble ... If FRANCE is stamped on the thimble, it was made in the 1970s."

## 1900 PARIS EXPOSITION



Alfred Féau France  
800 silver

## 1914



Charles Horner Chester 1913/1914

World War I thimble with a disc with an applied enamelled disc with a Red Cross symbol

## 1914 + Iron Cross



R: Gabler Germany  
800 silver

World War I thimble with a 1914 Iron Cross on the wide band  
crown and 'W' lettered above 1914

L: stone in apex – R: applied Iron Cross within indentations

## 1914 LYON EXPOSITION



Roger Lenain France  
800 silver



Roger Lenain France  
marked FRANCE with size #9 1970s reissue

Beryl Frank "In the 1970s Roz Belford, an astute retailer of thimbles ... discovered that Lenain had carefully stored the original dies for their thimbles ... Some of these thimbles were reissued for export to the United States. ... The size is marked on the thimble ... If FRANCE is stamped on the thimble, it was made in the 1970s." The original apex is flatter than the original 1914 issue.

## 1914-1915 ARANYAT VASÉRT



Settmacher Vienna Austria  
aluminium

Hungarian lettering for 'Jewellery for iron'

which was the WW1 appeal for money for munitions from the populace  
painted "stones" are original on blue band version –green one was made with no coloured stones  
(see Groiss on Settmacher - p59)

## 1914 + 1915 + 1916



probably Gabler Germany  
iron or steel

World War I thimble but what significance are the three dates  
do the crosses have significance?

## 1914 16



Roger Lenain (?) France  
gilt sterling silver

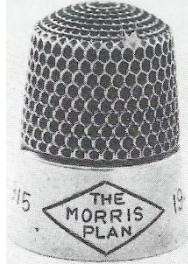
Isbister names this thimble as "Les filles filant" (Girls spinning)  
unusual as there are two dates lettered within the pictorial

**1914/16**



Gabler Germany  
800 enamelled silver  
stone apex  
includes Iron Cross

**1915 THE MORRIS PLAN 1940**



Simons Philadelphia  
sterling silver  
lettering within diamond-shape with dates alongside  
1940s

**1915 - 1919**



tho I can't see the maker's marks this appears to be made by Henry Griffith & Sons  
sterling silver  
I feel these dates were placed at time of manufacture

**1978**



Monika Fald Germany  
gilt sterling silver  
replica of Kutch India Raj sterling silver thimble

**1990 + horseshoe**



Iles & Gomms Birmingham  
brass

TCI Convention Louisville Kentucky

**1995 WIEDERAUFBAU FRAUENKIRCHE DRESDEN**



Thorvald Greif Germany  
925

commemorating the reconstruction of the Dresden Frauenkirche with applied rebuilt church, 1995 copper attachment on the side represents the ruins of the church 1945, which is placed next to images of bombed ruins - '13.-14.2.45' is lettered vertically on thimble along one side of copper

**2000**



Simons Philadelphia  
sterling

**2000 NEW YEAR NEUJAHR**



Settmacher Austria  
aluminium  
Settmacher closed in Vienna in 2005

**2000 YEAR**



James Swann & Sons Birmingham  
sterling silver  
Space Hubble computer – International Space Station

**2004-2014 Schiller's 200 Jahre Wilh. Tell**



Julius Wengert Pzorzheim Germany  
sterling silver  
limited to **100**

**100,000 COPIES SHIRE PUBLICATIONS 8<sup>TH</sup> APRIL 1997**



Crummles Enamels Poole

**(A Gentleman in Khaki)**



Henry Griffith & Sons Ltd Birmingham 1899  
created during the Boer War being waged between Britain and South Africa

**A MEMORIAL OF QUEEN CAROLINE OB<sup>T</sup> AUG<sup>T</sup> 7 1821 AG<sup>D</sup> 53**



sterling silver  
wide band with royal symbols (thistle and clover) on the verso  
it is interesting that this thimble mentions 'obituary' (OB<sup>T</sup>)  
she was Queen Caroline of Brunswick, wife of George IV

**A present from Gay Ann Rogers "AMERICAN SILVER THIMBLES"**



Simons Philadelphia  
sterling silver  
A gift from GAR to those who lent thimbles  
1989

**A STITCH FOR THE RED WHITE & BLUE**



G W Hatton & Co Chester 1914  
enamelled bands in the order of the lettering - red at the top of the band  
band lettering is not coloured



G W Hatton Chester 1914  
also with a Chester 1918 assay mark  
blue lettering with an added full stop  
enamelled bands



G W Hatton & Co Chester 1914  
enamelled bands



sterling silver with enamelled bands  
similar to above but lettering is not coloured  
and not hallmarked



similar thimbles with no lettering were produced to commemorate coronation of  
Edward VIII, which never took place Chester 1936

L: the enamelling is worn

C: Charles Horner Chester 1936

b&w photo

order of the colour of the bands is reversed with the blue at the top of the band

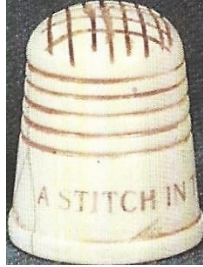
R: Charles Horner Chester 1936



applied worn coat-of-arms

## A stitch in time

Other thimbles with this lettering can be found in several other topics



synthetic material  
'A stitch in time'  
TTG August 1987



James Swann & Sons Birmingham 1990

## A stitch in time saves nine

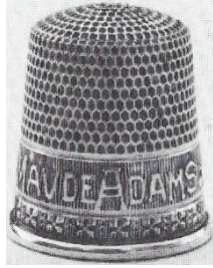


James (Hagop) Demirjian California  
sterling silver



Simons Philadelphia  
sterling silver  
1900s

## A THIMBLE FROM MAUDE ADAMS



Simons Philadelphia  
sterling silver  
c.1906

commissioned by Adams (1872-1953) to commemorate her starring role in 'Peter Pan' in New York, where Wendy gives Peter Pan a thimble as a kiss

## A.C. ILLUM KYINDERNES BYGNING



Settmacher Vienna Austria  
tombac

Illum (1863-1938 ) was a Danish businessman and store owner. His wife raised money for the Women's Society by selling thimbles thru the family business shows Women's Building, Copenhagen 1930s

## A.O.A SILVER



the extra mark seems to be a size mark

## A MERRY X-MAS



sterling silver with shadow gothic lettering on textured ground  
unknown USA maker whose mark is a small crown  
1900s

H Muhr's Sons produced a similar thimble

## ADAM RIESE 1x1 RECHNEN



Thorvald Greif Germany

925

commemorating the 450<sup>th</sup> anniversary of 1500 master calculator and accountant, 2000 blue glass apex and open work with Roman numerals of dates, as part of the design

## Africa Convention Feb 1990



Moroak

china

limited to **200**

## AJOS



James Swann Birmingham 1917 1918 1922

lettering is always contained in this scrolled lozenge mark has appeared on several James Swann thimbles with different patterns

## AMERICAN Quilter's Society



## AMERICAN RED CROSS HUMANITY NEUTRALITY



aluminium with a red-painted band – including the Red Cross symbol

I understand these thimbles were made during WWII

volunteers and members of the Red Cross prepared sewing kits, which were sent to the military in the USA and overseas

surplus supplies were used in one instance post-war by a schoolteacher to teach her first- grade students to add and subtract (eBay March 2019)

## ANG



ANG lettered on the wide bands  
for American Needlepoint Guild

two L: sterling silver – C: gold-plated (b&w photo) - plastic (R) Christmas in July 1984  
see also: Needle Artists by the Sea

## AOPA



Ketcham & McDougall New York  
sterling silver  
enamelled badge has 'wings'

AOPA lettered across the centre – for Aircraft Owners & Pilots Association

ARB ... and others



monograms: AMY - CAF - DAS - JAW - JJB - JSH - KDK - LRL - MEK - MGG - MOM with hearts in centres of Ms



Leonore Doskow New York  
sterling silver

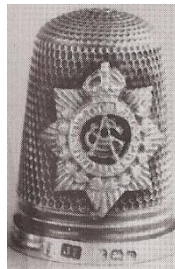
chunky distinctive applied block lettering on the bands  
marked 'Sterling Doskow Made in England' with a maker's mark on the verso  
the mark is an L with a D superimposed on it, in a triangle  
made in England by James Swann & Son, they bear the mark of Leonore Doskow  
who worked out of Montrose NY USA - she designed and finished the thimbles





this Dorskow creation with initials of **BCH**, lettered is cursive – is probably just a monogram thimble forms part of sewing kit, and all have a smooth surface – tape measure, kit and thimble all bear the same monogram + .925

**ASC**



James Fenton Birmingham 1914  
for Army Service Corp.  
used for supplying the army with all supplies  
applied badge has the ASC monogram in the centre

**Association of the Inner Wheel Club of Great Britain and Ireland**



James Swann & Son Birmingham  
for Rotary, with their logo – R applied logo  
1983

**Asylum 1808**



interesting, dated Georgian thimble has cursive lettering  
steel-topped sterling silver

## ATLANTA '95



Simons Philadelphia  
sterling silver

## BATS 1978-1998



Steve Johnson  
corozo nut  
commemorating 20 years of Bay Area Thimble Society  
bat and lettering in gold  
Society disbanded in 2016  
limited to **30**

## BATTLE OF PLATTSBURGH SEPT 1814 LAKE CHAMPLAIN



Ketcham & McDougall New York  
sterling silver  
PAT'D  
commemorating the centenary of the battle

## Bay Area Thimble Society 25 Years 1978-2003



Thorvald Greif Germany  
925  
applied bat and thimble on stippled or frosted ground  
limited to **35**  
Society disbanded in 2016



Simons Philadelphia  
925  
Society disbanded in 2016

**Bertus van Dikkenberg 1998**



Bertus is a Dutch collector and had this thimble created  
engraver from Schoonhoven  
thimble at R is a cover for thimble at L which then forms one thimble

**BETSY ROSS**



Joe Turner Jewelry Works Studio Coeur d'Alene  
sterling silver

**BORN 1564 DIED 1616**



Shakespeare's bust in relief  
steel-topped silver  
c. 1776

## C.A.T.



Nina Harby USA  
Capital Area Thimbles club thimble 2009  
10<sup>th</sup> anniversary  
shell on apex  
b&w photo

## BENZ 1844-1929



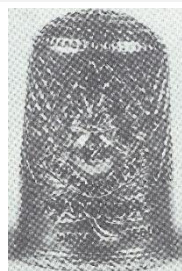
Thorvald Greif Germany  
925  
commemorating 80 years of Carl Benz 2009

## CC 1492-1992



Thorvald Greif Germany  
925  
commemorating 500 years of Christopher Columbus

## CANADA



Birks  
sterling silver  
applied unknown military insignia  
for World War I

## CAPE THIMBLE COLLECTORS CLUB



Charmaine Hoy Cape Town  
handpainted resin  
1992

## Capital Area Thimble Society



handpainted china by Irmgard Greife  
with CAT logo  
club thimble 2018

## Capital Area Thimblers



handpainted china by Teri Koenig  
with CAT logo  
first club thimble 1999  
b&w photo

**CAROLINE QUEEN OF** (rose thistle shamrock pictorials)



sterling silver  
c.1820

**Cats 1984-2009**



Tom Edwards Washington  
sterling silver  
to commemorate 25 years of Capitol Thimble Society  
gilt star on apex

**CENTURY OF PROGRESS CHICAGO 1934**



brass  
World's Fair commemorative

## CHARLES ILES BEZOEK 1987



Iles & Gomms Birmingham  
quilting thimble with concave apex  
thimble made for Vingerhoed's – a Dutch Thimble Group – outing to the Charles Iles factory

## CHICAGO 1978



Simons Philadelphia  
pewter  
created for attendees of Thimble Collectors International (TCI) convention

## CHRISTINA BERTRAND THIMBLE COLLECTOR



Iles & Gomms Birmingham  
brass  
etched thimble alongside lettering  
personalised  
member of TCI

(clasped hands)



sterling silver – pre 1880s  
clasped hands – with pansy, carnation and oak leaves

## CLEAN HANDS FOR NEEDLEWORK



aluminium

so well used even the 'glass' top has popped out  
neither a slogan nor an advertising thimble

## CLEVELAND 1940 K.I.O.



Simons Philadelphia  
sterling silver

K.I.O stands for Kentucky Indiana Ohio  
commemorating the annual bowling tournament for Union Printers  
the tournament was held in Ohio in 1940  
(my thanks to Thimblestuff for this research)

## CORKY 1-29-63



Leonore Duskow New York  
sterling silver

made in England by James Swann & Son, they bear the mark of Leonore Duskow  
enamel portrait in set-in circular disc of dog

## "CORONET"



brass

L: "Coronet" England

R: "Coronet" with 'Trade Mark' with a crown or coronet in between on verso

(crown) **M. 1939**



Charles Iles Birmingham  
tailor's brass-lined steel

marked for the Air Ministry as official property of the Royal Air Force,  
commonly found in their Maintenance Units where they were used in the repair of parachutes, barrage  
balloons etc and also issued with airman's hussifs (Eileen Saunders 1991)  
WD would be for the army ie War Department  
RN would be for the Royal Navy

**CYBER**



Tom Edwards Washington  
sterling silver

commissioned by Cyber Thimble Group for collectors around the world, 2017

(for) **CYBERTHIMBLE**



china  
first group thimble 2000

**DAIRYLAND THIMBLERS**



Simons Philadelphia  
sterling silver  
made for TCI Convention in Milwaukee WI 2024

## De Vingerhoed



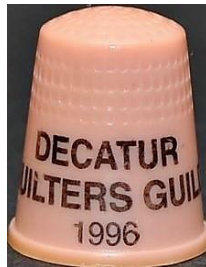
china  
address of Dutch thimble club

## De Vingerhoed 5 jaar 1982-1987



Hooijkaas (HH) Schoonhoven  
Kay Sullivan's Dutch thimble catalogue

## DECATUR QUILTERS GUILD 1996



Georgia USA  
plastic

## DEDALERAS 2012 ARGENTINAS



resin  
Argentina's flag colours  
Argentinian Thimblers

**KA (Delta Kappa)**



Simons Philadelphia  
sterling silver  
fraternity thimble  
see also: ΠβΦ (Pi beta Phi)

**DORCAS THIMBLERS ACTS 9**



Simons Philadelphia  
sterling silver  
club thimble for Florida's Dorcas Thimblers  
the coral set into the map shows Sarasota, for foundation members

**DORSET THIMBLE SOCIETY 1985-1995**



James Swann & Sons Birmingham

**DORSET THIMBLE SOCIETY 3rd INTERNATIONAL CONFERENCE 21-23 MAY 1993 SOUTHAMPTON**



handpainted Dorothy Newsome

**DORSET THIMBLE SOCIETY 6<sup>th</sup> INTERNATIONAL CONFERENCE 1999**



Crummles Enamels Poole

**DORSET THIMBLE SOCIETY 1997**



Crummles Enamels Poole

**DTS 2<sup>ND</sup> INTERNATIONAL CONFERENCE 6.7.8 JUNE 1991**



handpainted Dorothy Newsome

**DTS 7<sup>th</sup> INTERNATIONAL CONFERENCE 2001**



Crummles Enamels Poole

**DTS 8<sup>th</sup> INTERNATIONAL CONFERENCE 2005**



James Swann & Sons Birmingham

**DTS 10<sup>th</sup> INTERNATIONAL CONFERENCE 2007**



Andy Poole Birmingham

**DTS 11<sup>th</sup> INTERNATIONAL CONFERENCE 2009**



Andy Poole Birmingham

**DTS 12<sup>th</sup> International Conference 2011**



Andy Poole Birmingham 2011  
Dorset Thimble Society

**DTS 20 1985-2005**



handpainted Dorothy Newsome  
Dorset Thimble Society

## E.S.A - LONDON



brass

Educational Supplies Association, London  
probably made by Charles Iles of Birmingham  
were they issued to schools?

## ELECTION



Arthur Witting Birmingham 1927/1928/1929/1930/1931/1932

probably made by Henry Griffith & Sons as the sunburst patterning is peculiar to HG&S  
Edwin Holmes in his *Thimble Notes and Queries* of winter 1989 ... "In Britain the term is unthinkable (in the political sense). In the sense of 'choice' it is evidently a brand name ... the dates are not all for election years which at the time were in 1931."

## ELIXABETH HILSON HELP HOPEFUL SOROFUL HARTES



silver

16th century personalised thimble  
apex missing  
housed in the British Museum  
unusual spelling of her first name

## Elsa Williams School of Needle Arts



Simons Philadelphia  
sterling silver

these thimbles were given to students who completed her course – emeralds around the band  
Elsa Williams' school was in West Townsend MASS – it closed in early 1980s

## EMBROIDERERS' GUILD 1901-1981



A.F. Pinxt

handpainted commemorative china 75 years  
limited to **100**

## Embroiderers' Guild of America



Simons Philadelphia  
sterling silver

- 1: the US Guild was established as a branch of the London Guild between 1958-1970
- 2: larger applied logo which is the Embroiderers Guild of America's first logo as an independent group - applied logo of the Guild which has EGA with a thimble, sewing needle and threads
- 3: most recent EGA logo on band
- 4: unknown maker with EGA logo on apex

## EMBROIDERERS' GUILD OF SOUTH AUSTRALIA



Pat Hagan South Australia  
sterling silver

to commemorate the 200th anniversary of founding of South Australia 1986  
Hagan's design is of a raised Sturt Desert Pea, which is South Australia's floral emblem  
limited to **100**

## EMBROIDERERS' GUILD QLD



Louis Hermann Brisbane  
sterling silver  
to commemorate 25<sup>th</sup> anniversary of founding of the Guild in 1968  
Hermann's design is of an all over Cooktown Orchid, which is Queensland's floral emblem  
1993

## ESSEX GIRL GUIDES



I am fascinated by the supposed hallmark for this thimble – 1949  
was this produced as a fundraiser?

## ESTC 1984



Simons Philadelphia  
sterling silver  
club thimble for Empire State Thimble Club

## ESTC 1984-2014



copper  
club thimble for Empire State Thimble Club 30 years  
applied New York state flower of a rose and Statue of Liberty  
b&w photo

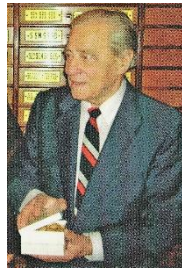
**EXCELSIOR**



Iles & Gomms Birmingham  
Brass

see also: Gregorita, Jesusito, Josefina, Regina

**'Exposition Paris 1937'**



Settmacher Vienna Austria  
brass - silverplate

L: 'Austria' stamped in indentation  
R: blue apex

**FECMU**



sterling silver

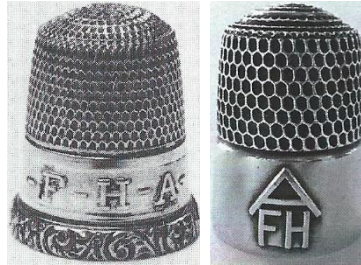
applied badge is for the qualities of  
**F**aith **E**ndurance **C**ourage **M**odesty **U**nselfishness  
of the Royal Neighbors of America

## FEDERATION CENTENARY 1901 to 2001



Curtis Hine North Balwyn Melbourne  
sterling silver  
handmade  
limited to **10**

## F-H-A



Simons Philadelphia  
sterling silver  
for Future Homemakers of America  
L: 1940s  
R: applied logo Ray Nimmo 21<sup>st</sup> C

## FIGHT FOR OLD GLORY



aluminium

## FINGERHUTMUSEUM



Helmut Greif Germany  
sterling silver  
Thimble Museum in Creglingen

**FINGERHUTMUSEUM 10 JAHRE 1992**



Thorvald Greif Germany  
925 – R: 14ct gold  
Thimble Museum in Creglingen

**FINGERHUTMUSEUM CREGLINGEN 25 2007**



Thorvald Greif Germany  
925  
depicting Tilman Riemenschneider, carver of Creglingen church alter 16<sup>th</sup> century

(fleur de lis)



Lotthammer-Eber (six petalled mark) Pforzheim Germany  
made for the Italian market  
900 silver

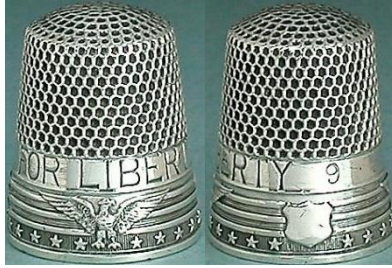
R: Lotthammer-Eber mark has been over stamped with Florence’s Piliti & Schreyer mark

**FLOOD**



Goldsmith Stern  
sterling silver

## FOR LIBERTY



Ketcham & McDougall New York  
sterling silver  
1917

## FOR VALOUR



copper with applied Military Cross  
1930s

## FREUNDE DES FINGERHUTS 1993



Thorvald Greif Germany  
925

design has ten thimble shapes in relief both upright and upside down each with a date – ranging from 1983 and 1992 commemorating ten years of Thimble Friends limited to **150**



there are also several single letters between the thimbles = ZEHN JAHRE meaning ten years



**FRIEDEN IN DEN NIEDERLANDE 50 JAHRE FREI!**



Thorvald Greif Germany  
925

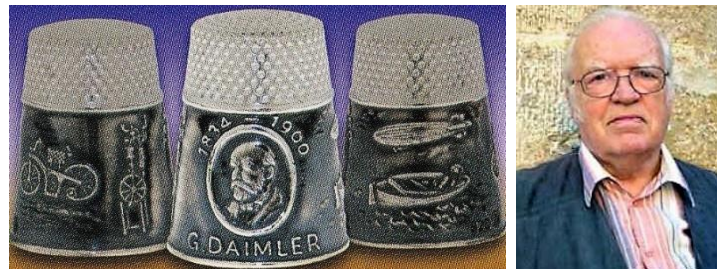
**FRIENDS WAR RELIEF SERVICE**



Ketcham & McDougall New York  
also made by Simons Philadelphia  
sterling silver

'Friends' would have applied to Quakers who were active in war zones as conscientious objectors  
first set up at the start of Franco-Prussian war and revived at start of WW1  
applied enamelled disc  
1900s

**G. DAIMLER 1834-1900**



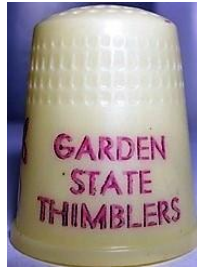
Thorvald Greif Germany  
925  
175<sup>th</sup> anniversary of Gottlieb Daimler 2009

**G. King – G. K ... – K ...**



sterling silver  
Georgian trio  
three similar thimbles with intriguing lettering  
two of the thimbles have their lettering upside down to face the sewer when sewing

## GARDEN STATE THIMBLERS



Georgia USA  
plastic

## GARDEN STATE THIMBLERS



Simons Philadelphia  
sterling silver

## GFS



Charles Horner Chester 1920  
applied badge  
Girls' Friendly Society

## GOLDSCHMIEDHAUS HANAU 1979



Monika Fald Germany

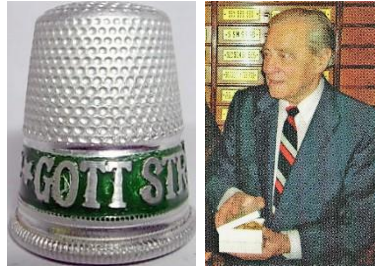
## GOTT MIT UNS 1914



Germany

L: brass – C: silver with stone in place of damaged silver apex  
propaganda thimble: God with us

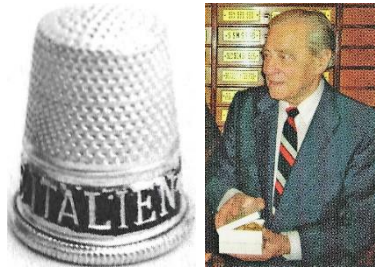
## GOTT STRAFE ENGLAND



Settmacher Vienna Austria  
aluminium

propaganda thimble: God punish England  
green, red and black bands were available

## GOTT STRAFE ITALIEN



Settmacher Vienna Austria  
aluminium  
b&w photo

## GRAND NATIONAL JUBILEE

no photo

metal  
for King George III  
heads of the King and Queen

**GREAT BRITAIN 50 KM FRANCE MAI 1994 2600DM**



Thorvald Greif Germany  
enamelled 925  
commemorating opening of the Chunnel

**GREENWICH 2000**



James Swann & Sons Birmingham

**GREGORITA**



Charles Iles Birmingham  
brass tailor's - with sprigs before and after lettering  
see also: Excelsior, Jesusito, Josefina, Regina

**GS**



Ketcham & McDougall New York  
sterling silver  
for Girl Scouts  
applied green enamelled badge  
1880s

## GUERNSEY



James Swann & Son Birmingham  
Guernsey lettered diagonally on applied map of Guernsey

## HANS SACHS 5. NOV. 1494-1994 500



Thorvald Greif Germany  
brass  
commemorating 500 year anniversary of this German poet and playwright

## HAPPY CHILD UNHAPPY CHILD



pre-1884 sterling silver  
lettering around rim with accompanying applied scenes around the band

## HAWKEYE THIMBLERS



Iles & Gomms Birmingham  
brass  
Iowa club thimble 1986

## HAWKEYE THIMBLERS 1982



handpainted Wanda Kauffman  
sycamore

## HAWKEYE THIMBLERS IOWA



Amish Kraft Co  
brass  
club thimble 1997

## HEIL UND SIEG



Settmacher Vienna Austria  
aluminium  
propaganda thimble: Health and victory

## "HER MAJESTY" THIMBLE



Charles Iles Birmingham

This thimble had long been associated with Queen Victoria. This is not so  
There were many commemorative thimbles made for the 1897 Jubilee  
It may be an advertising thimble but what is it advertising?  
Additional lettering has "ENGLAND" below the larger lettering

## HERMÉS



France

sterling silver, with boar's head mark

is this (upside-down) lettering an advertising thimble – or the maker – or a prize for a designer working for the fashion label?

## HEROES OF THE CRIMEA



Charles Iles Birmingham  
brass

## HIGHGROVE



James Swann & Son Birmingham

Highgrove House in Gloucestershire, home of King Charles III  
presumably made as a souvenir for the when he was Prince of Wales  
smooth apex

## HONOUR THE BRAVE



Charles Iles Birmingham  
brass

**Houston Thimble Group "Chartered March 8 1977"**



Georgia USA  
plastic

**H.W.SILVO / SILVO**



sterling silver  
all over blackberry patterning  
is this lettering an advertising thimble – or the maker's mark?  
with appearance of the thimble at L, maybe H.W is the maker

**ICH KENNE KEINE PARTEIEN MEHR NUR DEUTSCHE 4-8-1914**



Germany  
brass

translated: I just don't know any parties any more  
quote by Kaiser Bill an tne outbreak of World War I

**IHN**



**SOMETHING · NEW.**  
ALUMINUM THIMBLES.  
Light, Durable and will not tarnish.  
In appearance similar to Silver, and at half the cost

*If you want something NEW, HANDSOME and CHEAP, send, enclosing business card, for samples and prices.*

**KETCHAM & McDOUGALL,**  
198 Broadway, New York.

Ketcham & McDougall New York  
aluminium  
applied swastika symbols

## IHS



Swann Thimbles Birmingham 1992  
made for The Thimble Guild  
communion chalice with IHS in roundel above  
IHS = first three letters in Greek for 'Jesus'  
grapes to L represent wine – corn represents bread  
limited to **250**

## ILES ALURINE



Charles Iles Birmingham

## ILES COMFORT THIMBLE



Charles Iles Birmingham  
nickel silver

## ILES PATENT



Charles Iles Birmingham  
brass  
unusual, beaded rim – vitreous lining

## ILES TAILOR



silverplated

as this isn't open-ended like other tailor's thimbles, this name is a mystery

## ILMO 1994



Tommie Jane Lane Nebraska

sterling silver

club thimble for ILMO Thimblers (Illinois-Missouri)

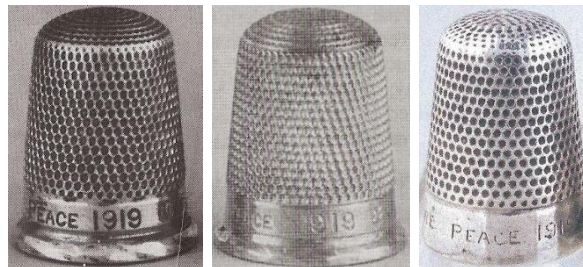
(Ionian Islands)



sterling silver

made for the British Exhibition 1851  
with seven symbols around the band

## INFANT WELFARE PEACE 1918



James Fenton Birmingham 1918

lettering on raised narrow band  
three slightly differently shaped thimbles

## IRMGARD V TRAITTEUR



Karlheinz Prantl Germany  
brass  
personalised  
German thimble collector

## JESUESITO

no photo

brass  
double row of scrolls before and after lettering  
see also: Excelsior, Gregorita, Josefina, Regina

## "Join the THIMBLE EXCHANGE CIRCLE" "Thimbles Galore from THE THIMBLE LADY 1984"



plastic  
Georgia, USA

## JOSEFINA

no photo

brass  
double row of scrolls before and after lettering  
see also: Excelsior, Gregorita, Jesuesito, Regina

## JUSTICE



James Swann & Son Birmingham 1948

## KANNO PATCHWORK SCHOOL 1999



china  
commemorating 20 years

## KING AND CONSTITUTION

no photo

metal  
for King George III  
royal cypher (GIIR) with crown above  
celebrating the King's 50<sup>th</sup> anniversary 1809

## КАУЪ КОЛЛЕКУЦИОНЕРОЪ НАПЕРСМКОВ 2009 (Thimble Collectors Club)



Moscow Thimble Club  
porcelain

## KRUPP'S FLEISSIGE BERTA 42



nickname of German 42cm mortars used during WWI

## Lady Slipper Thimblers of Minnesota *founded 1982*



Georgia USA  
plastic

## LEAVITT



Simons Philadelphia  
sterling silver  
band lettering of this name is vertical to the rim

## LEMBRANCA



brass  
memento or souvenir - Portuguese

(Lincoln Imp) and **The Lincoln Imp**



sterling silver – unknown maker 1892  
pewter

James Ward Usher, a Lincoln jeweller and silversmith, registered the Lincoln Imp, when he obtained the sole rights to use the Lincoln Imp in 1892

it was modelled on a stone imp high on the walls of Lincoln Cathedral  
this is a RARE thimble

top R: Ray Nimmo Birmingham 2015

lower: pewter where the imp can be moved up and down, showing inner mechanism

**L.C.C.**



Charles Iles Birmingham  
brass

for London County Council  
and probably issued to schools?

interesting star mark on apex – blue vitreous lining

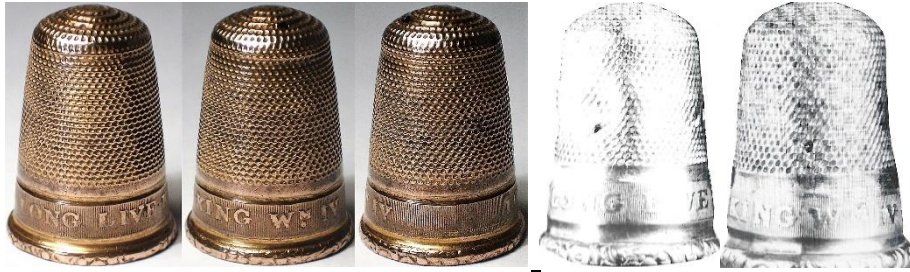
**LSTMN**



3D plastic club thimble

Lady Slipper Thimblers of Minnesota with Lady Slipper orchid

## LONG LIVE KING W<sup>M</sup>. IV



L: brass – R: sterling Z  
William IV reigned 1830-1837  
Is this the earliest royal commemorative?

## LONG LIVE Q<sup>N</sup>. ADELAIDE



brass

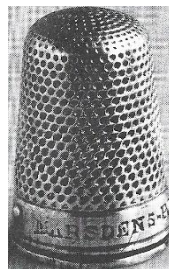
Adelaide married William IV in 1818. They ascended to the throne in 1830

## LOT.No A



brass with Birmingham anchor mark  
sturdy tailor's thimble with strong indentations

## MARSDENS PATENT



silver

first thimble patent granted on 12 May 1850 - to Charles Marsden (#13341)  
ventilated thimble

## MARTHA



Thorvald Greif Germany  
925  
commissioned by Martha Arufat USA 1999

## MARTIN & SON



Charles Iles Birmingham  
brass-lined steel  
is this an advertising thimble?  
World War I

## MARTIN LUTHER 15.10.n.1487-15.2.1543



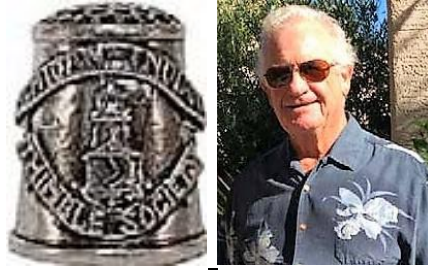
Thorvald Greif Germany  
925  
five dated panels, 1517 1521 1546 1555, commemorating life of Luther 1996  
(see inner view)  
first recorded by Di Pelham Burn (1993)

## Medical Corps for RAF Doctors



James Fenton Birmingham 1938  
applied badge has medical symbol with a crown at the top as part of the design

## MICHIGAN INDIANA THIMBLE SOCIETY



Joe Turner Jewelry Works Studio Coeur d'Alene  
sterling silver  
club thimble

## MITS



sterling silver  
Mexico  
club thimble for Michigan Indiana Thimble Society

## MITS 35 YEARS 1982-2017



club thimble for Michigan Indiana Thimble Society

## MITS MICHIGAN INDIAN THIMBLE SOCIETY



first club thimble

## MOZART



Thorvald Greif Germany  
925

commemorating 250<sup>th</sup> anniversary of his birth 2006

## Myrtle Lundqvist Academic Award Sue Gowan 2012



Tom Edwards Washington  
sterling silver

these thimble awards were given at TCI Conventions from 2008 - 2012

## NAS NEEDLE ARTISTS by the SEA



James (Haqop) Demirjian California  
.925 sterling silver

group is a chapter of American Needlepoint Guild Inc (ANG)

## NATALAN



USA

**NATIONAL SILVEROID**



Charles Iles Birmingham

**NDR**



Simons Philadelphia  
sterling silver  
for Nancy Reagan with White House in relief

**NEEDLEWORK TOOL COLLECTORS SOCIETY OF AUSTRALIA**



Georgia USA  
plastic

**NEQG**



Simons Philadelphia  
sterling silver

**NFTC 1986-2016**



Tom Edwards Washington  
sterling silver  
commemorating 30 years of Nimble Fingers Thimble Club Seattle  
the thimble figure on the dropped rim is known by members as Nimby  
limited to **50**

**NFTC 2015 OHIO**



Tom Edwards Washington  
sterling silver  
commemorating the Mini Convention by Nimble Fingers Thimble Club Coeur d'Alene  
moose and eagle

**NICKEL**



Charles Iles Birmingham  
W indicates it was made for Woolworths

**NICKEL SILVER**



Charles Iles Birmingham

**NICKEL SILVER. STERLING SILVER PLATED**



a bit of a mixed message?  
Woolworths & Co

**NIMBLE FINGERS SPOKANE 1988**



Joe Turner Jewelry Works Studio Coeur d'Alene  
sterling silver  
club thimble for Nimble Fingers Thimble Club

**N'OUBLIONS JAMAIS 1914**



Lenain France  
800 silver  
some examples have an ornate rim



Lenain France  
800 silver

marked FRANCE with size #9 1975 reissue

Beryl Frank "In the 1970s Roz Belford, an astute retailer of thimbles ... discovered that Lenain had carefully stored the original dies for their thimbles ... Some of these thimbles were reissued for export to the United States. ... The size is marked on the thimble ... If FRANCE is stamped on the thimble, it was made in the 1970s."

The reissue wording ends with an exclamation mark.

## NTC



Simons Philadelphia  
sterling silver  
for National Thimbles Collectors  
in 1955 Sara Anne Weisbrot formed this group in the USA  
it was the first organised thimble group anywhere in the world

## NTCSA CONFERENCE 1994 MELBOURNE



Gems of Tasmania  
china

## NUR DEUTSCHE KEINE PARTEIEN 4.AUG.1914



Germany  
brass  
translated: I just don't know any parties any more  
quote by Kaiser Bill an the outbreak of World War I

## OHIO 1985



Iles & Gomms Birmingham  
brass  
made for their club's Mini convention

## OHIO THIMBLE SEEKERS 10th ANNIVERSARY 1982



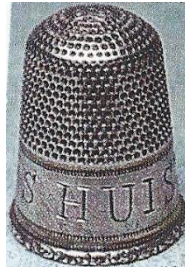
Georgia USA  
plastic

## OHIO VALLEY THIMBLERS



Georgia USA  
plastic

## ONS HUIS



Gabler Germany  
lettered in Dutch meaning Our House  
1900s

## OTS 1982-2007



Simons Philadelphia  
sterling silver  
Ohio Thimble Seekers

## PATENT



Charles Iles Birmingham  
zinc lining with 'jewel' in apex  
Patent no 22397 1895

## PATENT ENAMEL



Charles Iles Birmingham  
brass-lined steel  
is this an advertising thimble?  
maybe any enamelling has worn off?  
World War I  
other examples exist in brass

## PATTY NEWMAN USA



Simons Philadelphia  
sterling silver  
personalised  
with heart and four-leaf clover  
limited to **100**  
member of TCI

(Peace)



Henry Griffith & Sons Birmingham 1919  
gilt-lined

applied peace emblem with a crown  
according to Dorothy Friend (*TCI Bulletin* January 1988) this is the brass insignia for the  
Royal Artillery

## PEPPER



Horace Woodward & Co Birmingham 1888  
made in the shape to use as a pepper shaker, with specific holes in apex  
it has a diamond-shaped registration mark

## PETER PAN REG<sup>D</sup>



L: Henry Fidkin Birmingham 1918 – R: CU Birmingham 1918  
Fidkin would have made the thimbles for the sponsor Charles Usher of Leicester  
it is still a mystery what this lettering is for – it could be promotional but it isn't advertising a specific  
product

## PHILADELPHIA THIMBLE SOCIETY 1979-1989



Simons Philadelphia  
sterling silver with gilt band  
snowflake pattern

## ΠΒΦ (Pi beta Phi)



Goldsmith-Stern & Co New York  
panelled sterling silver  
sorority thimble  
see also: ΚΔ (Delta Kappa)

## PIONEER WOMAN



Ketcham & McDougall New York  
sterling silver  
applied memorial

## PRINS CLAUS 6.9.1926+6.10.2002



Thorvald Greif Germany  
enamelled 925 in colours of Dutch and German flags

## PRINSES CATHARINA-AMALIA HK 017.12.2003



Thorvald Greif Germany  
enamelled 925  
scalloped rim

## PRISCILLA NUTMEGGERS



Joe Turner Jewelry Works Studio Coeur d'Alene  
sterling silver  
club thimble of Connecticut thimble collectors

## RAF



Felix Morel Bath  
blue enameled brass with sterling silver RAF wings attached

## REAL GERMAN SILVER



Charles Iles Birmingham  
none of Iles thimbles are made of silver – they are nickel silver

## (Red Cross)



Simons Philadelphia  
sterling silver  
applied enamelled cross

**REGINA**



Charles Iles Birmingham  
brass tailor's - with sprigs before and after lettering  
see also: Excelsior, Gregorita, Jesusito, Josefina, Regina

**RH**



Charles Horner Chester 1919

what a puzzle this lettering is! RH with numerals -  
(ignore the RH graphic above of 1919 - a typo - should read 1918)  
lower: a date '1918' + '60' - on a wider band

there is then the intertwined WS or SW capped by more numerals on the verso  
that isn't meant as a monogram?

I recently encountered a query from a German member in a 1986 *TCI Bulletin*, asking about this thimble -  
"It seems that these marks were pressed during the production of the thimble, not later ... Perhaps it is  
for a firm's name or an anniversary date?"

no-one ever attempted an answer

and now - late in 2020 - a thimble discovery with almost identical markings -

by James Fenton

there has been a suggestion that this is an anniversary date

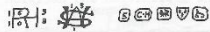
the date could be 19 January (numerals from the monogram) and the date is 60 years in 1918 (so 1858)  
they could have been privately engraved using plain thimbles ...



James Fenton Birmingham 1918



Q3: This year we bought in England a quite normal silver thimble with a plain band. The hallmark is Chester, 1919; the maker, Charles Horner. But this thimble bears two more unusual marks. It seems that these marks were pressed too during the production of the thimble, not later.



Perhaps it stands for a firm name or an anniversary date? Can anyone help?  
--C. Sommerkorn, West Germany

## REMEMBER PHILADELPHIA



Iles & Gomms Birmingham  
brass  
TCI Convention 2008

## REMEMBER THIMBLES ONLY JEAN SHOUP 1986-1987



Iles & Gomms Birmingham  
brass  
mail order thimble business California

## ROBERT F KENNEDY WE MOURN OUR LOSS 1925-1968



USA  
plastic

## ROYAL ENGINEERS



James Fenton Birmingham 1939  
George V cypher (the monarch is their Commander-in-Chief)  
RE's motto: Honi soit qui mal y pense

## ROYAL SCHOOL OF NEEDLEWORK



Stephen Frost Warwick Models  
pewter  
with a pair of applied strawberries

## RSN



Clive & Clarissa Cooke Ludlow  
sterling silver  
for Royal School of Needlework  
logo has a sewing needle thru the lettering  
1980s

## S.A.T.C. CONVENTION 1993



handpainted by Gili Davis  
porcelain

## S.C.T.C. 1980



Audre New York (retailer)  
porcelain

## SAND IN YOUR SHOES OCEAN CITY MD TOW MEETING APRIL 6 2013



Woodsetton Dudley  
enamelled copper  
TOW = Thimbles on Wheels

## SATC 24<sup>th</sup> February 1996



Frika Collection  
fine bone china  
South African Thimble Club  
limited to **100**

## SATC 1993



Simons Philadelphia  
sterling silver  
for South African Thimble Club  
applied club logo in shape of a thimble  
'1993' engraved on verso  
limited to **50**

## SATC CONVENTION 1993



Gili Davis South Africa  
Handpainted porcelain  
R: lettered SATC 1993

L: limited to **30** – R: limited to **30** (given to international delegates)  
thimbles are numbered

## SATC Turn of the Century Convention 6 March 1999



Frika Collection  
bone china  
South African Thimble Club  
limited to **100**

## SATCC 40 YEARS 2024



bone china  
South African Thimble Club

## SCHMUCKMUSEUM PFORZHEIM 1978



Monika Fald Germany  
museum is dedicated to history of jewellery

## SCHOOLHOUSE QUILTERS KENMORE



Louis Hermann Brisbane  
sterling silver

all round design has a quilt and a schoolhouse on an indented ground – patterning continues over the apex

## SCHWARZ-GELBES KREUZ 1914



aluminium

promoting an Austrian aid organisation for war invalids and their families, which started on 31 August 1914

notice the depiction of the medal pressed into the thimble available with black or yellow band

## SCTC



Tom Edwards Washington  
sterling silver

club thimble for Southern California Thimble Club 40 years

## SIEG HEIL 1914



900 silver  
stamped D.R.G.M.

## SILVER. STERLING



Charles Iles Birmingham

## South African Thimble Collectors Club Indaba II. 6-9 March 2019



china

## SOUTH AFRICAN THIMBLE DAY 27 JUNE 1987



china

## SOUVENIR



Charles Iles Birmingham  
brass  
with sprigs before and after lettering

**SOUVENIR ST LOUIS EXPOSITION 1904**



Iles & Gomms Birmingham  
nickel silver

**SOUVENIR ST. LOUIS EXPOSITION 1904**



metal

(St Hubert)



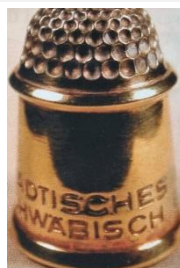
French sterling silver  
stag with three shamrocks affixed on band

**St Peter's Band of Hope. July 1918**



MAA Birmingham 1917

**STÄDTISCHES MUSEUM SCHWÄBISCH GMÜND 1979**



Monika Falk Germany

## STER<sup>6</sup> SILVER



## STIRLING SILVER



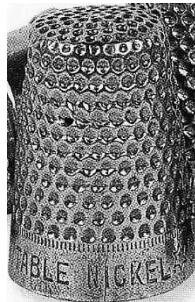
mid-Victorian sterling silver with steel apex  
interesting spelling

(swastika)



Waite Thresher USA  
sterling silver with applied swastika L: child's size  
1890s

## TABLE NICKEL



## TAYLOR'S NEW YORK 1939 WORLD'S FAIR



Taylor's Pork Roll was first available at the 1939 World's Fair  
aluminium advertising with blue band

## TAYLOR'S NON-SLIP PATENT



Charles Iles Birmingham  
brass

## TC 1967 1776-1976



Simons Philadelphia  
sterling silver

1967 is the date celebrating the start of Ruth Mann's thimble group which became a round-robin thimble group

1776-1976 dates on verso commemorate the American bicentenary

## TC1 20 YEARS 1998



Simons Philadelphia  
sterling silver

TCI 2000



Thorvald Greif Germany  
925

commemorating the millennium with darkened band including an applied thimble with  
'New Year 2000' lettered within – applied bunch of flowers  
apex has 'TCI' with thimble

TEG



James Swann & Son Birmingham  
lettering on dark blue enamelled band  
for The Embroiderers Guild (UK)

THE EMBROIDERERS GUILD 1960 1990



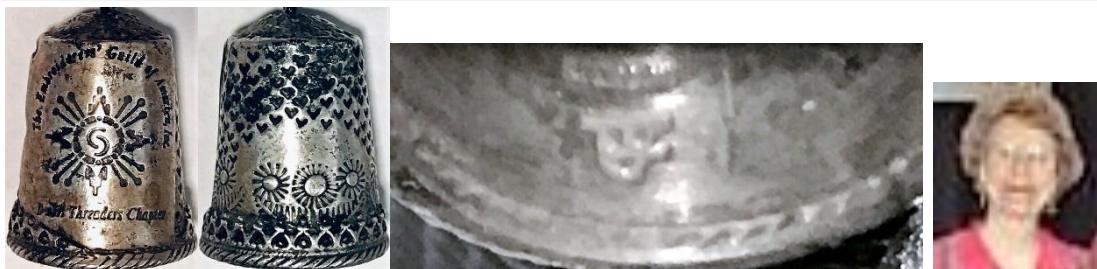
Peter Gertler Melbourne

sterling silver/gold dipped sterling silver

The Embroiderers Guild of **Victoria** commissioned Gertler to create a design for 30<sup>th</sup> anniversary  
applied pair of scissors

limited to **100** of which **30** were the gold edition

The Embroiderers' Guild of America Inc  
Desert Threaders Chapter



Tommie Jane Lane Nebraska

sterling silver

hearts design on verso

## "THE GIRLS' CLUB"



Webster USA  
sterling silver  
lettering includes a swastika  
thimble would have been made before World War II  
two different forms of lettering

## THE INNER WHEEL



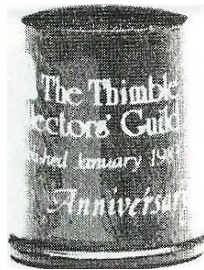
James Swann & Son Birmingham  
enamelled sterling silver  
The Inner Wheel is for women in Rotary Services Clubs

## THE SEATTLE THIMBLE SOCIETY



Tom Edwards Washington  
sterling silver

## The Thimble Collectors' Guild started January 1983 Anniversary



John Urwin Kelso Scotland  
wood  
1984  
limited to **1000**

## THE THIMBLE SOCIETY OF LONDON



Anne Young UK  
handpainted boxwood  
1983

## THE THIMBLE SOCIETY OF LONDON 1982



James Swann & Son Birmingham

## THIMBLE COLLECTOR



Simons Philadelphia  
sterling silver

Fern Hill's personalised thimble to give to friends – designed by her brother-in-law  
applied gold thimble with red enameled rose

## THIMBLE COLLECTORS CLUB 85 R.S.A.



Easy Promotions Johannesburg  
china  
club thimble

## THIMBLE COLLECTORS CLUB SOUTH AFRICA We Love Thimbles



Georgia USA  
plastic

## THIMBLE COLLECTORS GUILD



synthetic material

TCG is name of the Scottish thimble sales catalogue (1983-2018)

## THIMBLE COLLECTORS THE THIMBLE GUILD EST. 1970



Georgia USA  
plastic

## Thimble Collectors@ONElist.com EST. 1998



James Swann & Son Birmingham 2000  
commissioned by CyberThimble Group for collectors around the world

## THIMBLE GUILD 1970 1980



Simons Philadelphia  
sterling silver

commemorating tenth anniversary of thimble group started by Evelyn Eubanks in 1970  
1970 date is lettered on rim of an inscribed thimble image

## THIMBLE SOCIETY OF LONDON 1984



pewter

## THIMBLEFULL OF SAND AND SURFING TOO! TOW Carlsbad, CA October 21, 2023



enamelled disc on silver metal  
TOW is Thimbles on Wheels

## THIMBLES ON WHEELS (2023)



Marienela  
resin

## THIMBLES ONLY CA 1985



Iles & Gomms Birmingham  
brass  
Jean Shoup's mail order thimble business

## THIMBLES ONLY-REGARDS JEAN SHOUP 1985



Iles & Gomms Birmingham  
brass  
mail order thimble business California

## THIMBLES ONLY 1990



Iles & Gomms Birmingham  
brass  
Jean Shoup's mail order thimble business

## THIMBLESELECT



handpainted by Gili Davis South Africa  
porcelain  
mail order thimble business  
limited to **36**

## THIMBLESELECT 1987-2002



Gems of Tasmania  
china  
mail order thimble business  
limited to **130**

## THIMBLETTER 20th 1973-1993



Daniel Riccio USA  
bronze

## THREE RIVERS THIMBLERS Pittsburgh, PA



Georgia USA  
plastic

## TO JEAN FROM THE LANTERN THEATRE



James Swann & Son Birmingham 1983  
who is Jean?  
Lantern Theatre is in Sheffield in England

**TO MRS T.R.GILLIES DEVOTED SERVICES 1914-1918**



9ct gold  
Gordon Highlanders emblem on the verso  
b&w photo

**TOW 10/2021**



china  
Thimbles on Wheels  
handpainted bat for Halloween-Christmas gathering

**TOW 2017 CAROUSEL OF THIMBLE FUN OCEAN CITY, MARYLAND**



Hog-Eye Inc  
brass  
Thimbles on Wheels

**TOW SAND IN YOUR TOES OCEAN CITY, MARYLAND 2015**



Hog-Eye Inc  
brass  
Thimbles on Wheels

**U · S · 1**



Simons Philadelphia  
14ct gold  
doesn't look like a cartouche

**U S N**



Simons Philadelphia  
10-panelled sterling silver  
applied anchor with USN  
1940s

**VERMONT 1981 STITCH IN TIMERS**



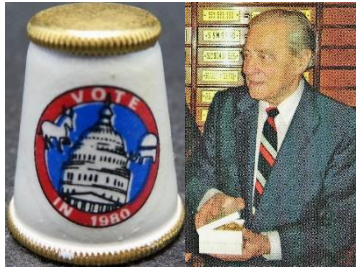
James (Hagop) Demirjian California  
925 sterling silver

**VICTORIA G.G, 1230**



Gabler Germany  
aluminium  
reeded rim  
what intriguing wording  
lettering almost looks like a London phone number from 1920s

## VOTE IN 1989



lacquered brass  
Settmacher Vienna Austria  
decorated in USA

## VROUWENKIESRECHT



brass  
reeded rim  
Dutch: Women's suffrage

## WANDA Y KAUFFMAN IOWA



Charles Iles Birmingham  
brass  
thimble collector

## WAR CHEST FUND



Charles Iles Birmingham  
ivorine

During the 1914-1918 war 13,000 white ivory thimbles were donated by Mrs Ninian Thomson to the War Chest Thimble Fund in New South Wales to raise funds for comforts for the Australian men fighting in Europe during World War I

## WELSH THIMBLERS



Vale Wales  
1996

## WELSH THIMBLERS 2007



Andy Poole Birmingham

## WEMBLEY 1924



Henry Griffith & Sons Birmingham 1924

the lion was the symbol of the 1924 British Empire Exhibition  
as shown on the commemorative postage stamps  
thimble box lettered 'Present from Wembley' with identical lion as on thimble



different thimbles from Charles Iles

nickel-plated and brass versions lettered BRITISH EMPIRE EXHIBITION



Arcadian China

**Where did I get this ?**



base metal with brass band  
needle threader attached to one side

**WILLIAM SHAKESPEAR**



Charles Iles Birmingham  
brass  
size 2  
lettered upside down  
includes a bust portrayal of Shakespeare

**WIR MÜSSEN SIEGEN**



Settmacher Vienna Vienna  
tombac  
propaganda thimble for We must have victory

**WITH THANKS FROM NORFOLK QUILTERS**



Swann Thimbles Birmingham 1992

**With Warm Regards JvH**



John von Hoelle USA  
tall brass with Celtic symbol between lettering  
*JvH* lettered in a roundel  
made at Iles & Gomms factory  
John J von Hoelle's book is *Thimble Collector's Encyclopedia* 1986  
lettering very faint

**Y.W.C.A**



Charles Iles Birmingham  
silver-plated brass  
for Young Women's Christian Association

## Pictorial or cryptic messages on mid-18<sup>th</sup> to mid-19<sup>th</sup> century thimbles

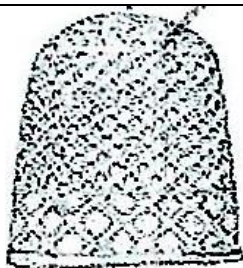
In 2022 I added this section: thimbles from 18<sup>th</sup> century that have cryptic or secret coded messages punched or engraved around the band in the form pictures of everyday domestic objects  
One day the meaning of these messages will become apparent: they are recorded here so that they aren't lost

I don't know a term for this group of thimbles; so for now, they are known as Pictorial thimbles

These thimbles first came to our attention as thimble collectors. in Brian Read's book which has hundreds of drawings of thimbles found in archaeological digs

Two of these interesting thimbles are illustrated (drawings 289-290)

They are all made of base metals, including bronze or a copper-alloy – a few additional examples have emerged



trellis – scissors – thimble – key – bottle

Read #289 sketch



Read #290 sketches



bird - key - scissors - flower - trellis - cartouche - wishbone or stirrup





scissors - thimble - trellis - pincushion - woman - beaded cross  
found buried in Staffordshire



initial 'A' - trellis - two cups - two rackets or clubs (may even be spoons) - jug-like 'gin' bottle



tho this thimble with an almost identical set of pictorials is very badly corroded, the message symbols aren't damaged



two cups - two rackets or clubs (may even be spoons) - initial 'A' - jug-like 'gin' bottle - trellis - leaves - flowers - ASH



this thimble almost doesn't fit as a pictorial - only the linking word ASH gives it a place



several linked elongated rondels - flower in eash - ASH



initial A - club - rose - cartouche - beehive - dog - fish

---

## References

- Christina Bertrand *Notions of war*. 1991  
Jenny Scharff Bockel *Thimbles of Southern Africa*. 2004  
Beryl Frank *Thimbles of France with waffled knurling*. 2003  
Dorothy Friend *British commemorative and souvenir thimbles*. 1987  
Franz Groiss *Thimble factory in Vienna founded 1863*. 1990  
Magdalena and William Isbister *Exposition thimbles*. 2010  
Magdalena and William Isbister *The "merchant's warehouse" fable*. *TCI Bulletin* spring 2007  
William Isbister *Late 19<sup>th</sup> and early 20<sup>th</sup> century French silver thimbles: a visual guide*  
Brian Read *Metal sewing-thimbles found in Britain*. 2017  
Molly Pearce *Queen Adelaide At Your Fingertips* spring 2018  
Diane Pelham Burn *Identifying steel-cored thimbles*. 1993  
Gay Ann Rogers *American silver thimbles*. 1989  
*Simons pewter thimbles*. *Thimble Guild* spring 2003

## Contributors

Jeanne Millsap Beas | Lola Bennett | Christina Bertrand | Clarice Birch | Joanna Blackie-Sew Many Bits | Bleasdales  
Jenny Bockel | Pawel Brzyski | Susan Dempster | Margaret Frecker | Kit Froebel | Micky Garvey | Connie Halket  
Lydia Hamilton | Margaret Hickling | Julie Hollick | Edwin Holmes | William Isbister | Denise Jenkins-Welsh Thimbles  
Eleanor Johnson | Friedy & Gerrit Kamp | Andrea Lange | Carolyn Meacham-Elegant Arts | Dagmar Nemeth  
Ray Nimmo | Molly Pearce | Alan Powell | Gay Ann Rogers | Mabel Rogers | Wolf-Dieter Scholz | Irene Schwall  
Simon | Norma Spicer | Kay Sullivan-De Vingerhoed | Thimble Society of London | Sandi Wood | Sandra Woodyard

This listing of thimbles with Interesting lettering does not purport to be complete or accurate in all aspects.  
Rather it invites comments and contributions to add to our knowledge. My thanks to the contributors.

EMAIL [thimbleselect@bigpond.com](mailto:thimbleselect@bigpond.com) TO SHARE YOUR KNOWLEDGE

© Sue Gowan  
April 2015